

SUMMER 2014

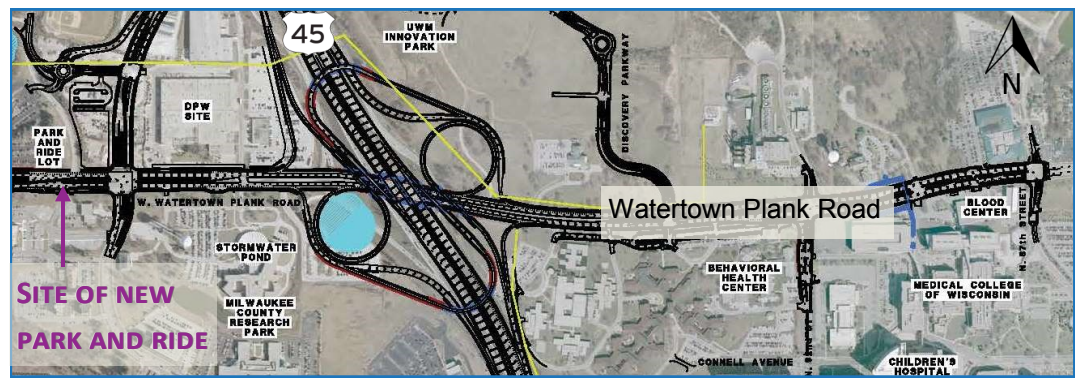


Watertown Plank Road Interchange

As part of the Zoo Interchange project, the Wisconsin Department of Transportation (WisDOT) is reconstructing the Watertown Plank Road interchange; scheduled to be complete by the end of 2014.

BACKGROUND

To accommodate the large volume of traffic in the area, the new high-capacity interchange will provide free-flow movements in all directions between the freeway and Watertown Plank Road. One lane in each direction is being added to Watertown Plank Road from WIS100 to 87th Street.



Redesign of the Watertown Plank Road Interchange

As part of the project, a pedestrian bridge is being constructed to more safely connect bike and pedestrian traffic across Watertown Plank Road near the Ronald McDonald House and Children's Hospital.

The project also includes a tremendous amount of utility work also impacting the local roads.

WHAT'S NEXT?

As part of the interchange and roadway work the park and ride lot at Watertown Plank Road was closed.

A temporary park and ride lot was built at the US 45 and Burleigh Road interchange near Mayfair Collection. The Burleigh Road park and ride lot will close when the new Watertown Plank Road lot is opened in late 2015. *See the reverse side for directions on how to drive the new interchange.*

TIMING

2014

CONTACT

WisDOT

141 NW Barstow

Waukesha, WI

53187

262.548.6421

WWW.ZOINTERCHANGE.WI.GOV

Driving the free-flow Watertown Plank Road interchange

