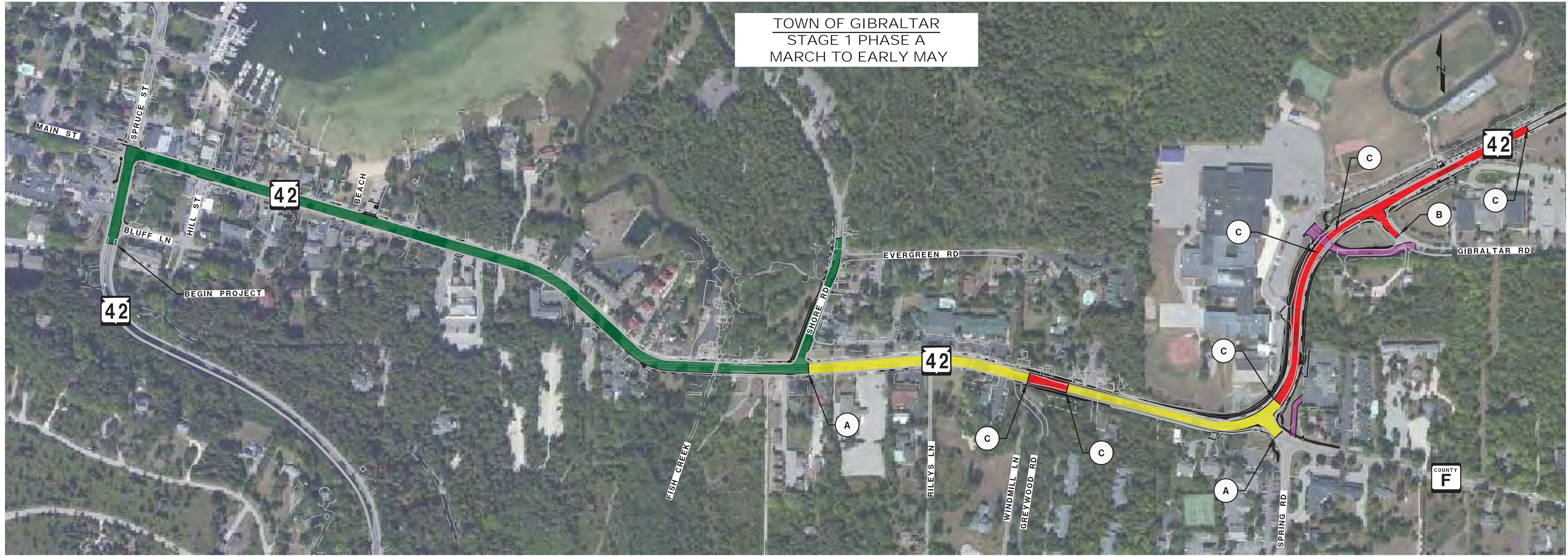


TOWN OF GIBRALTAR
 STAGE 1 PHASE A
 MARCH TO EARLY MAY



BLUFF LANE TO SHORE ROAD & SHORE ROAD

- OPEN TO TWO WAY TRAFFIC
- PARKING LANE CLOSURES
- SIDEWALK CLOSURES
- FLAGGING OPERATIONS

SHORE ROAD TO WINDMILL LANE & HOUSE #3976 TO COUNTY F

- CLOSED TO THRU TRAFFIC
- LOCAL ACCESS ONLY
- SIDEWALK CLOSED

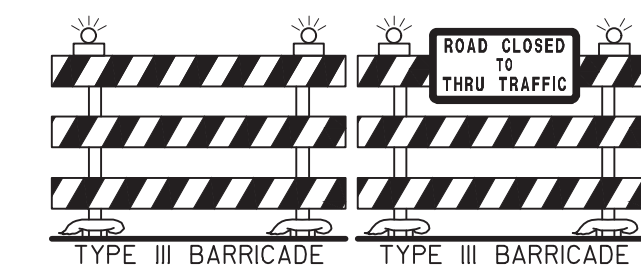
WINDMILL LANE TO HOUSE #3976 & COUNTY F TO YMCA CROSSWALK

- CLOSED TO ALL TRAFFIC
- SEE DETOUR ROUTE STAGE 1, COUNTY E TO COUNTY A

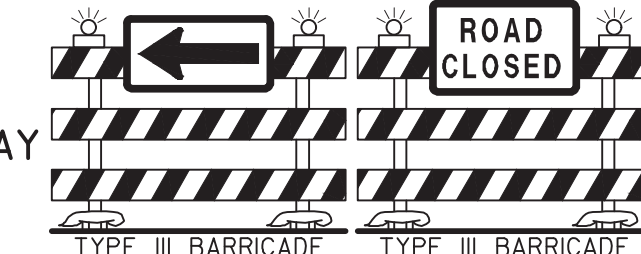
TEMPORARY DRIVEWAYS

- GIBRALTAR SCHOOL - TEMPORARY ASPHALT DRIVEWAY
- FISH CREEK GRILL - TEMPORARY GRAVEL DRIVEWAY

(A) ROAD CLOSED TO THRU TRAFFIC
 LOCAL TRAFFIC ONLY



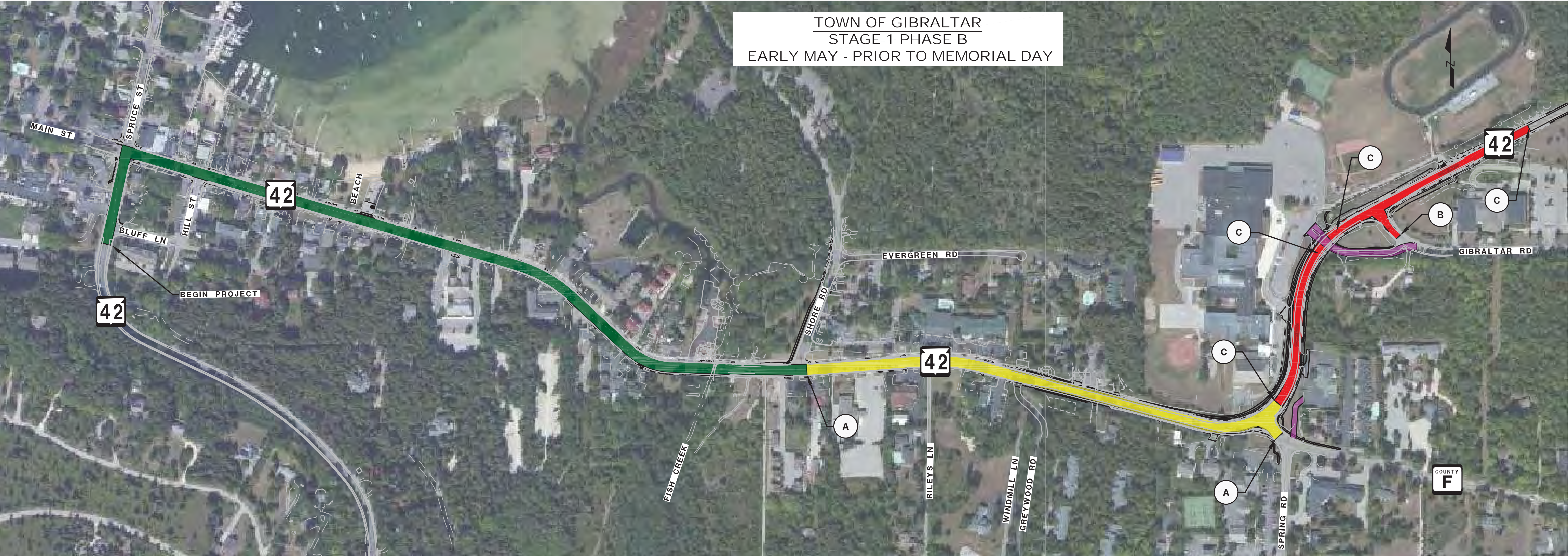
(B) HARD CLOSURE
 NO ACCESS
 DIVERT TRAFFIC TO TEMP ROADWAY



(C) HARD CLOSURE
 NO ACCESS



TOWN OF GIBRALTAR
 STAGE 1 PHASE B
 EARLY MAY - PRIOR TO MEMORIAL DAY



BLUFF LANE TO SHORE ROAD

- OPEN TO TWO WAY TRAFFIC
- PARKING LANE CLOSURES
- SIDEWALK CLOSURES
- FLAGGING OPERATIONS

SHORE ROAD TO COUNTY F

- CLOSED TO THRU TRAFFIC
- LOCAL ACCESS ONLY
- SIDEWALK CLOSED
- TWO 12-FOOT LOCAL TRAVEL LANES

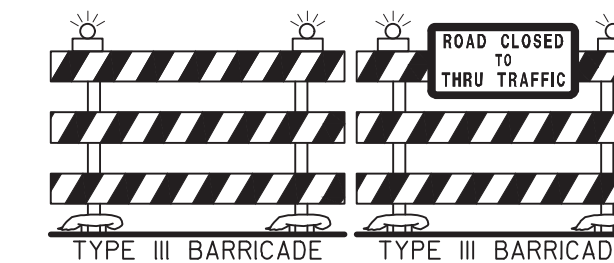
COUNTY F TO YMCA CROSSWALK

- CLOSED TO ALL TRAFFIC
- SEE DETOUR ROUTE STAGE 1, COUNTY E TO COUNTY A

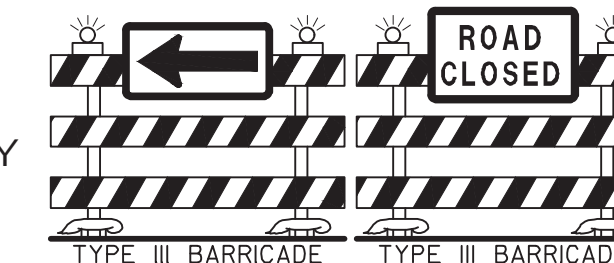
TEMPORARY DRIVEWAYS

- GIBRALTAR SCHOOL - TEMPORARY ASPHALT DRIVEWAY
- FISH CREEK GRILL - TEMPORARY GRAVEL DRIVEWAY

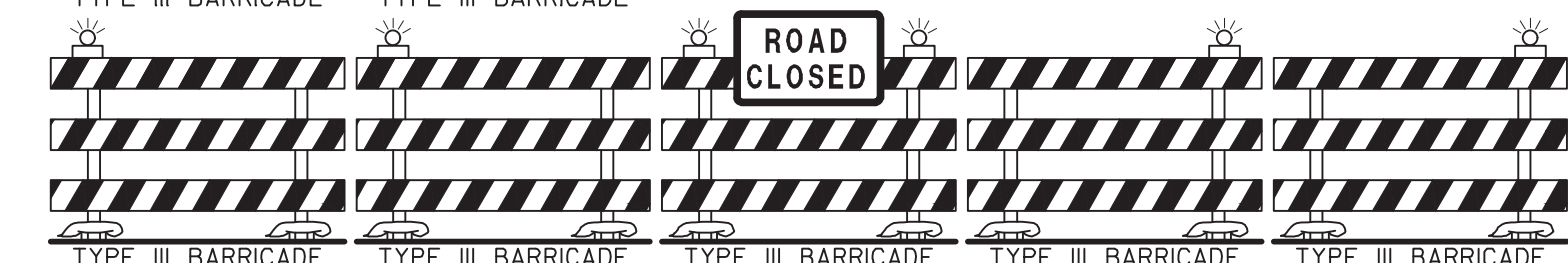
(A) ROAD CLOSED TO THRU TRAFFIC
 LOCAL TRAFFIC ONLY



(B) HARD CLOSURE
 NO ACCESS
 DIVERT TRAFFIC TO TEMP ROADWAY



(C) HARD CLOSURE
 NO ACCESS



TOWN OF GIBRALTAR
 STAGE 2
 PRIOR TO MEMORIAL DAY - END OF JUNE



BLUFF LANE TO WINDMILL LANE (GIBRALTAR)

CONSTRUCTION COMPLETE



WINDMILL LANE TO COUNTY F

- OPEN TO TWO WAY TRAFFIC
- SHOULDER CLOSURES
- FLAGGING OPERATIONS



COUNTY F TO YMCA CROSSWALK

- CLOSED TO ALL TRAFFIC
- SEE DETOUR ROUTE STAGE 2, COUNTY F TO COUNTY A



TEMPORARY DRIVEWAYS

- GIBRALTAR SCHOOL - TEMPORARY ASPHALT DRIVEWAY
- FISH CREEK GRILL - TEMPORARY GRAVEL DRIVEWAY

- (A) ROAD CLOSED TO THRU TRAFFIC
LOCAL TRAFFIC ONLY
- (B) HARD CLOSURE
NO ACCESS
DIVERT TRAFFIC TO TEMP ROADWAY
- (C) HARD CLOSURE
NO ACCESS

