

# WIS 42 Resurfacing Project Gibraltar - Sister Bay

**Jeremy Ashauer, P.E.**

WisDOT Project Manager

**Doug Kirst, P.E.**

WisDOT Design Project Leader

Construction Update Meeting  
Town of Gibraltar

**May 6, 2019**

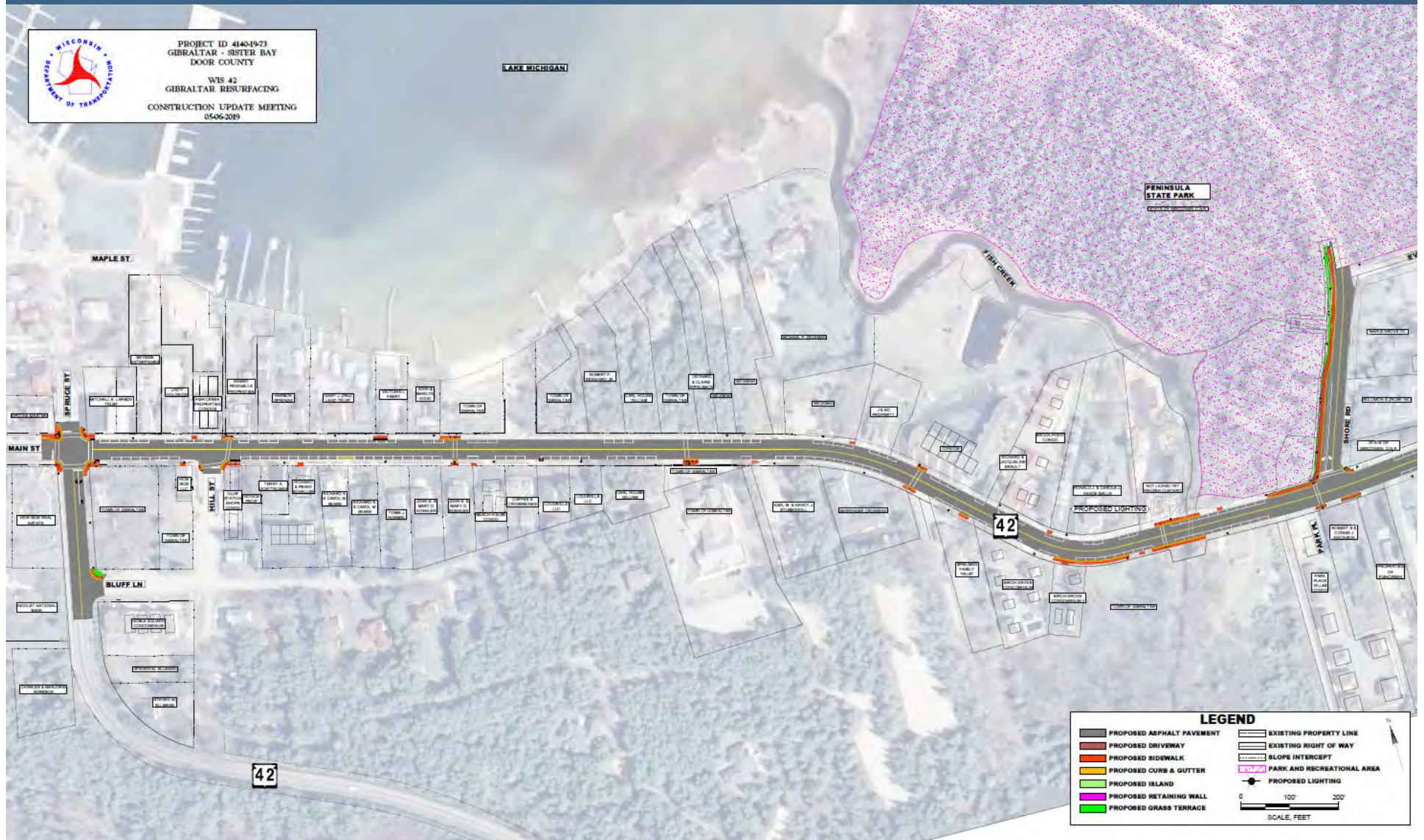


# Overview of presentation

- Project Overview
- Staging and Traffic Impacts
- Project Website
- In This Together Program
- Business Signing
- Future Meetings
- Question / Answer



# Project Overview







# Staging Overview

- Construction Timeframe
  - Project Start: October 15, 2019
  - Project End: End of June, 2020
- Three Construction Stages



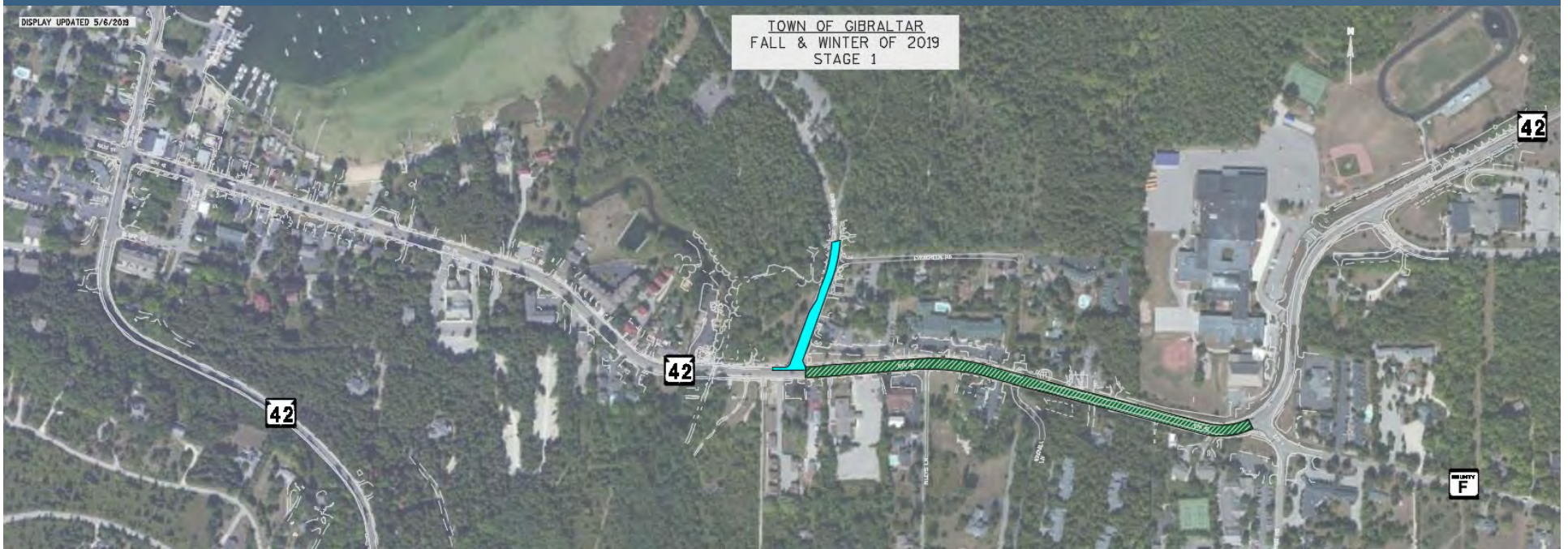
# Stage 1 Phase A

October 15 - October 20, 2019



# Stage 1 Phase B

October 21- Noon October 25, 2019

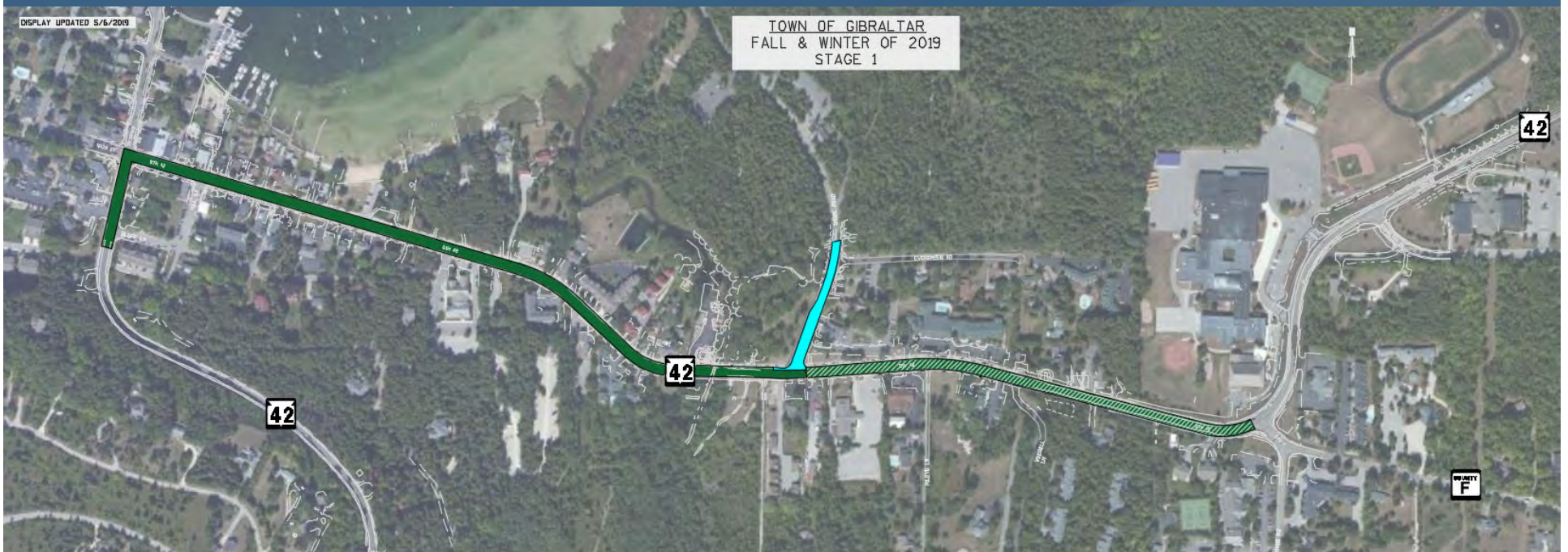


Noon October 25 - October 27, 2019 WIS 42 Open to Bi-Directional Traffic  
For Fish Creek Jack O'Lantern Days



# Stage 1 Phase C

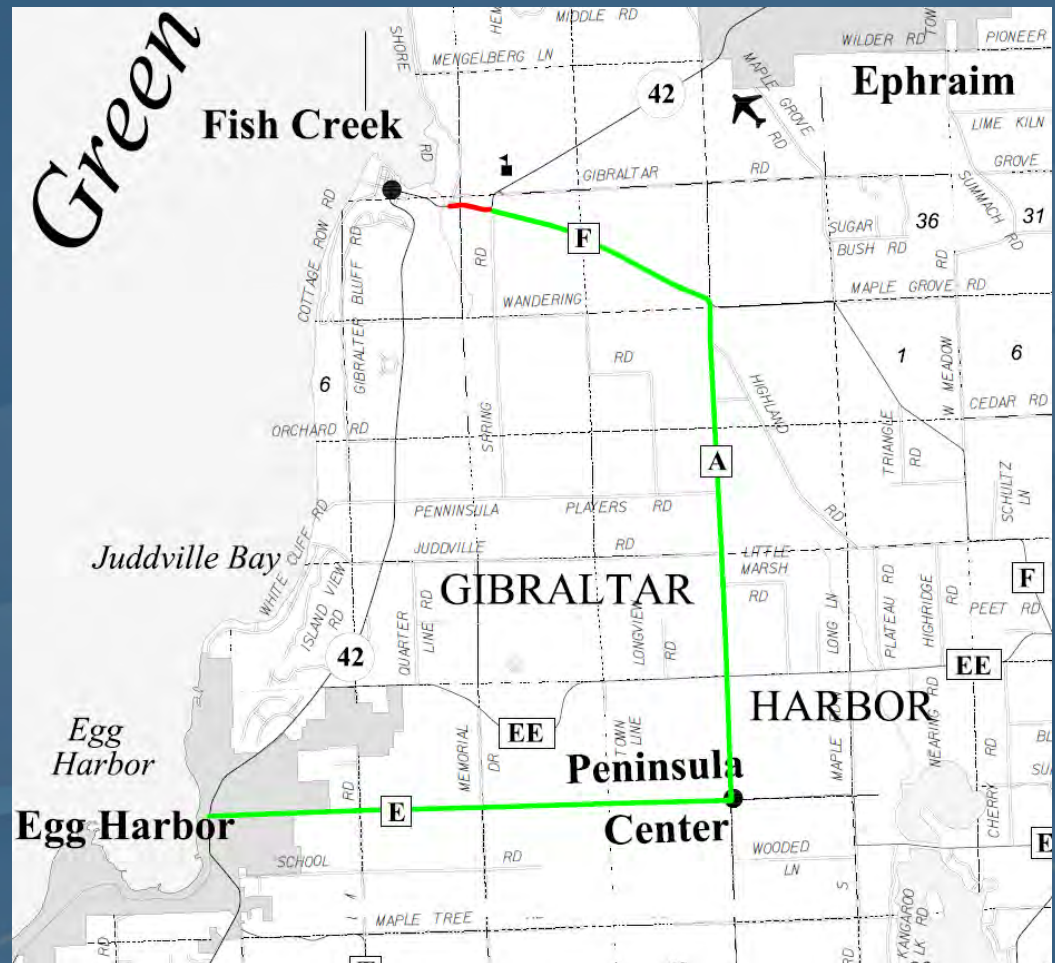
# October 28 - Winter Shutdown, 2019





# Stage 1

- End of October 2019 to Winter Shutdown
- Detour (SB ONLY)  
County F to  
County A to  
County E



# Winter Shutdown





# Stage 2

## Early March to Prior to Memorial Day - 2020



# Stage 2

- Early March to prior to Memorial Day - 2020
- Detour  
County E to County A

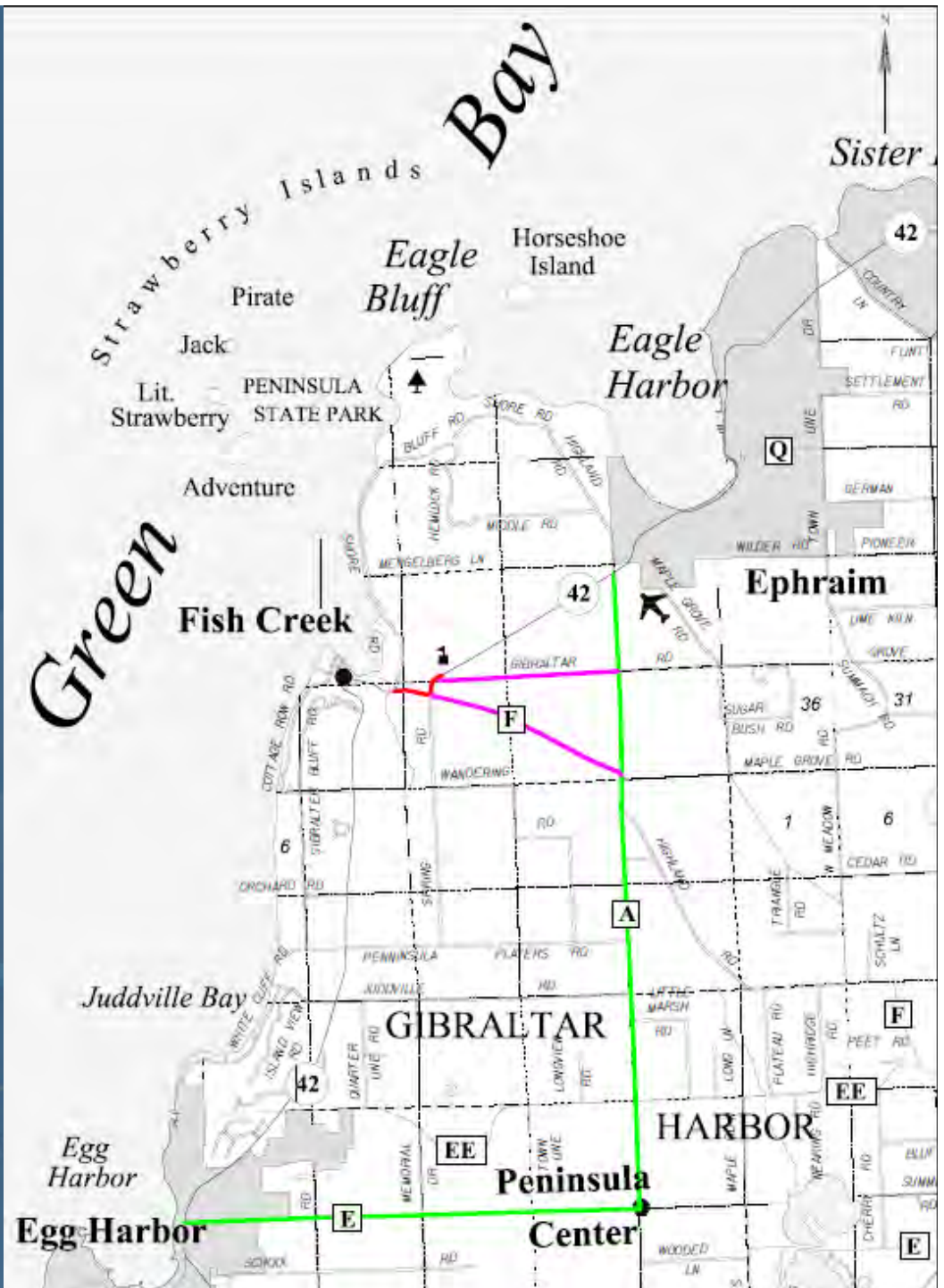
Northbound

ROAD OPEN TO  
PENINSULA  
STATE PARK

HWY 42  
OPEN TO  
FISH CREEK

Southbound

HWY 42  
NO ACCESS TO  
FISH CREEK





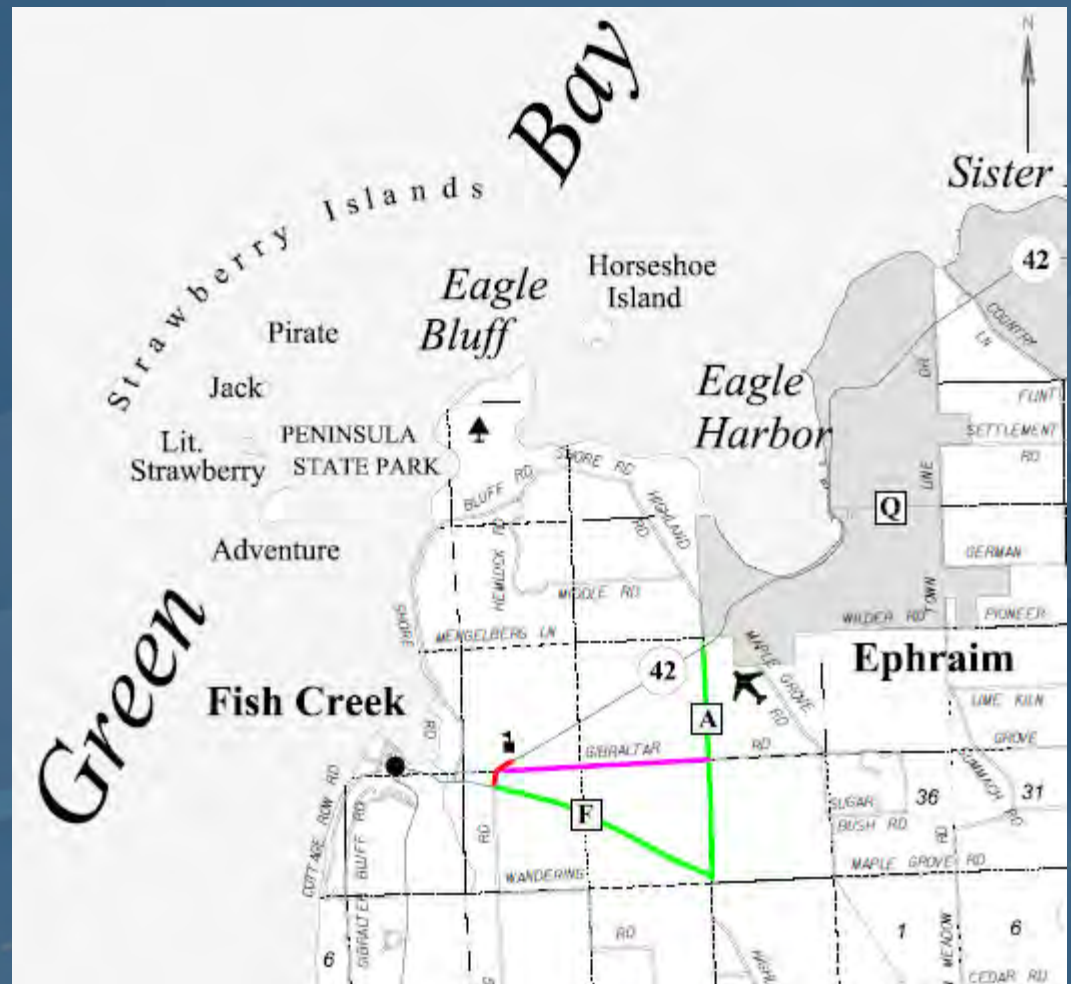
# Stage 3

Memorial Day to End of June - 2020



# Stage 3

- Memorial Day to End of June - 2020
- Detour  
County F to County A





# Project Website

- Website now available on 511wi.gov
- See handout for link



DEPARTMENT OF TRANSPORTATION  
511 Wisconsin Construction Projects

[511 Projects Home](#) [Contact 511 Projects](#) [Help](#) [Site Index](#) [511 Wisconsin](#) [My 511wi](#) [Wisconsin DOT](#)

## WIS 42 Door County

Gibraltar to Sister Bay



[OVERVIEW](#) [TRAFFIC IMPACTS/DETOURS](#) [MAP](#) [CONTACT US](#)

### Overview

WIS 42 from the town of Gibraltar to the village of Sister Bay in Door County is a resurfacing project scheduled to begin in March of 2019 and finish in fall of 2019. WIS 42 will be closed and detoured in and around Gibraltar during certain stages of construction. WIS 42 in Gibraltar will open prior to the end of June 2019 to accommodate summer tourist traffic. The remainder of the highway will remain open during construction by using flagging operations.

[FULL OVERVIEW](#)



# In This Together Program

## In This Together

In This Together

Workbook

Case studies

Promotional samples

WisDOT recognizes businesses located in work zones have special needs. It's critical that customers have access to businesses and that they continue to visit them, regardless of any road work inconvenience.

The In This Together program includes:

- Workbook and
- Case studies that demonstrate techniques that have been successfully used in communities throughout Wisconsin.
- Promotional samples showing a variety of examples of how businesses have promoted their businesses during construction.



This program is offered to business and community leaders as an idea source as they plan for road construction in their area.

Through communication and cooperation, businesses can not only survive, but thrive, when road construction comes to town.

View businesses located in construction areas

Go to a region for information on businesses located in WisDOT construction zones.

### North Central

Adams, Florence, Forest, Green Lake, Iron, Langlade, Lincoln, Marathon, Marquette, Menominee, Oneida, Portage, Price, Shawano, Vilas, Waupaca, Waushara and Wood counties.

### Northeast

Brown, Calumet, Door, Fond du Lac, Kewaunee, Manitowoc, Marinette, Oconto, Outagamie, Sheboygan and Winnebago counties.

### Northwest

Ashland, Barron, Bayfield, Buffalo, Burnett, Chippewa, Clark, Douglas, Dunn, Eau Claire, Jackson, Pepin, Pierce, Polk, Rusk, Sawyer, St. Croix, Taylor, Trempealeau and Washburn counties.

### Southeast

Kenosha, Milwaukee, Ozaukee, Racine, Walworth, Washington and Waukesha counties.

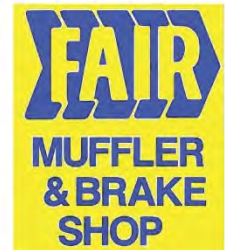
### Southwest

Columbia, Crawford, Dane, Dodge, Grant, Green, Iowa, Jefferson, Juneau, La Crosse, Lafayette, Monroe, Richland, Rock, Sauk and Vernon counties.





# Business Signing



**festival**  
foods



*Stadium Bike*

**Access to Mason St. Businesses**

# Future Update Meetings

- Fall 2019
  - Prior to construction start
  - Throughout construction, as needed
- Spring 2020
  - Prior to resuming construction
  - Throughout construction, as needed



# Project Contacts

Cory Thomson

Project Leader – Ayres Associates

(920) 412-8755

[ThomsonC@AyresAssociates.com](mailto:ThomsonC@AyresAssociates.com)

Jeremy Ashauer

Project Manager – WisDOT

(920) 412-6381

[Jeremy.ashauer@dot.wi.gov](mailto:Jeremy.ashauer@dot.wi.gov)