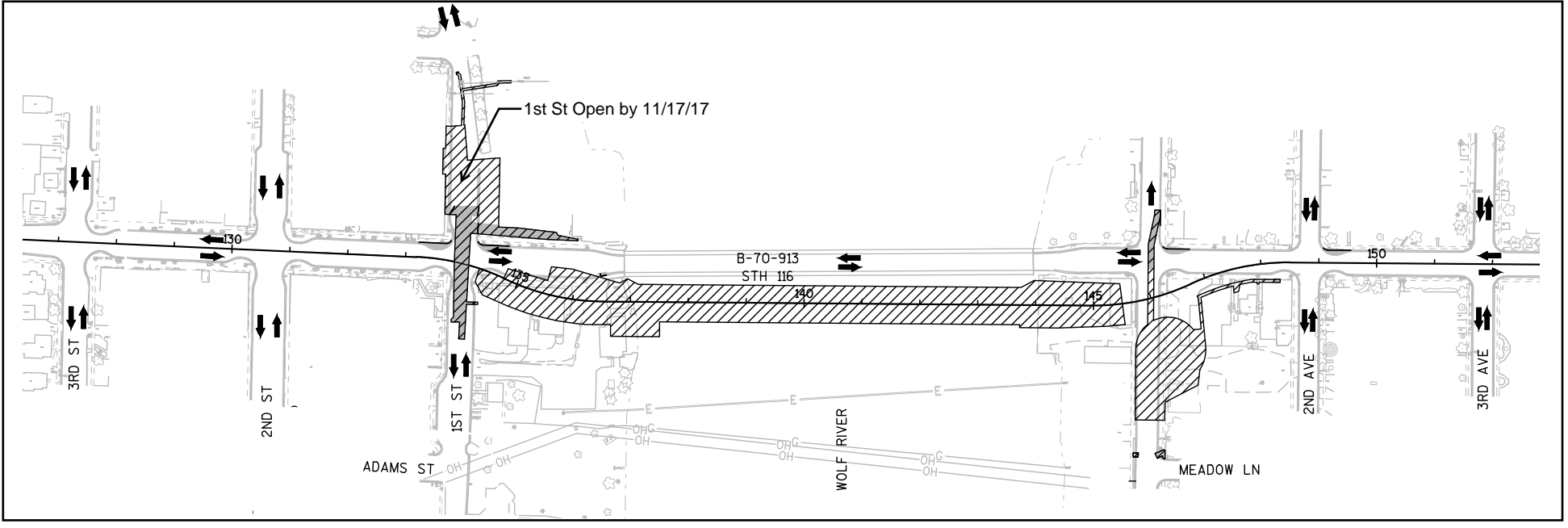
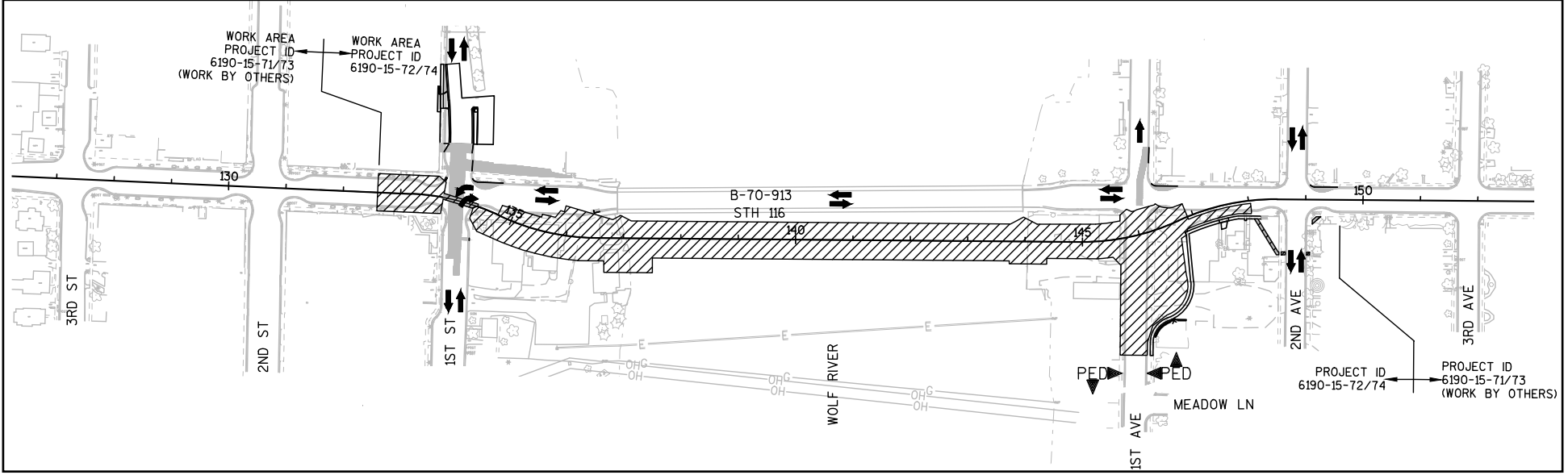


Village of Winneconne  
STH 116, Wolf River Bridge & Approaches  
WisDOT SP 6190-15-72/74

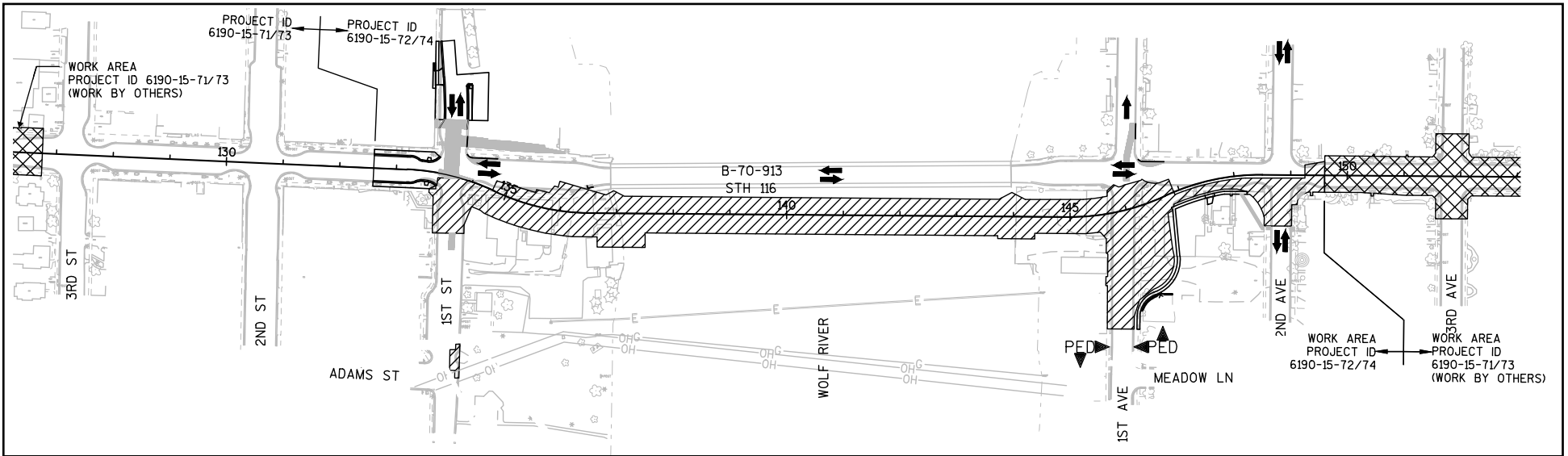
Stage 1 (Sept 2017 - April 2018)



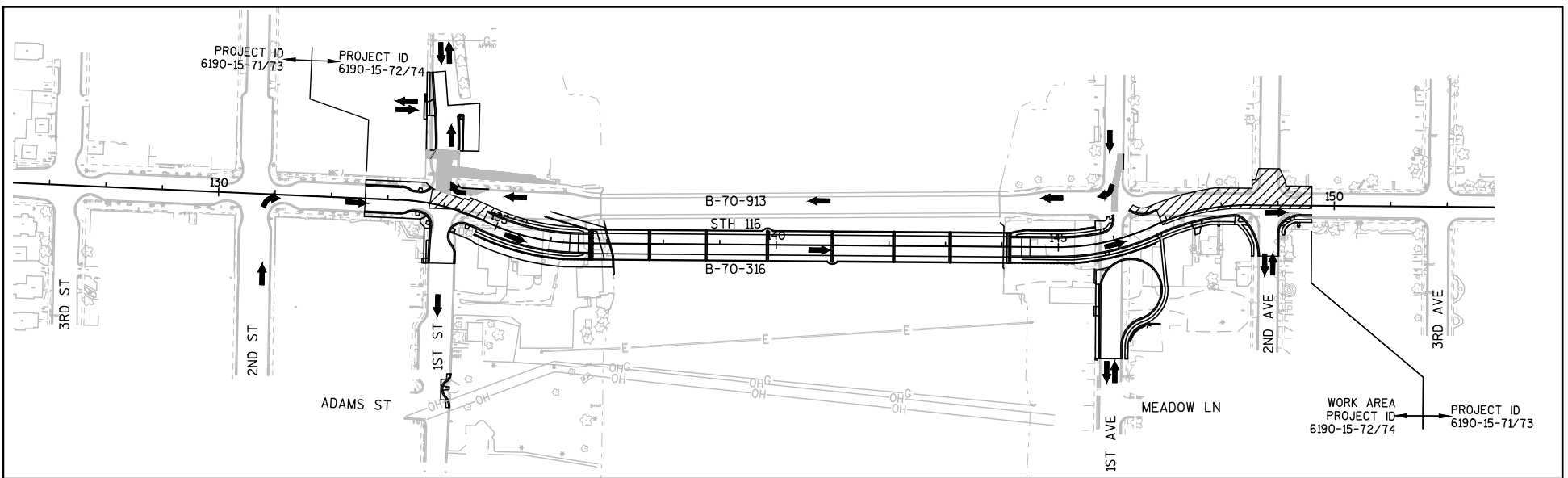
Stage 2 (April 2018-June 2018)



Stage 3 (June 2018 - Sept 2018)



Stage 4 (Sept 2018 - Oct 2018)



Stage 5 (Oct 2018 - Sept 2019)

