



US 18/151 (Town Hall Road to Fitchrona Road)

Weekly Construction Update: 12/1 – 12/8

Town Hall Road to CTH G

WORK PROGRESS:

- Cable guard adjustments and median grading will occur in Spring 2024.

TRAFFIC & ACCESS IMPACTS:

- Lane closures will occur in areas with median cable guard in Spring 2024.
-

CTH G to Fitchrona Road

WORK PROGRESS:

- US 18/151:
 - Asphalt paving has been completed for the project.
 - Beam guard, rumble strips and pavement marking work will be completed next week.
- CTH PB:
 - New traffic signals for the WB ramp intersection were turned on this week.
 - Concrete pavement patching through the US 18/151 interchange area will be completed next week.

TRAFFIC & ACCESS IMPACTS:

- US 18/151:
 - Lane closures will be removed on Friday, December 8. See page 2 for the 10-day outlook of anticipated lane closures.
- US 18/151 Ramp Closures:
 - On-ramp from Williamsburg Way to WB US 18/151 will reopen on Friday, 12/8.
- CTH PB:
 - Single lane closures will be removed on Friday, December 8.
- WIS 69:
 - Single lane closures will be removed on Friday, December 8.

For more information, contact:

Dustin Hunt
US 18/151 Project Engineer
(608) 286-9226 | dhunt@HNTB.com

Cody Kammerzelt
US 18/151 WisDOT Project Manager
(608) 219-1331 | Cody.Kammerzelt@dot.wi.gov



CTH G to Fitchrona Road

Anticipated Lane Closures - 10-Day Outlook

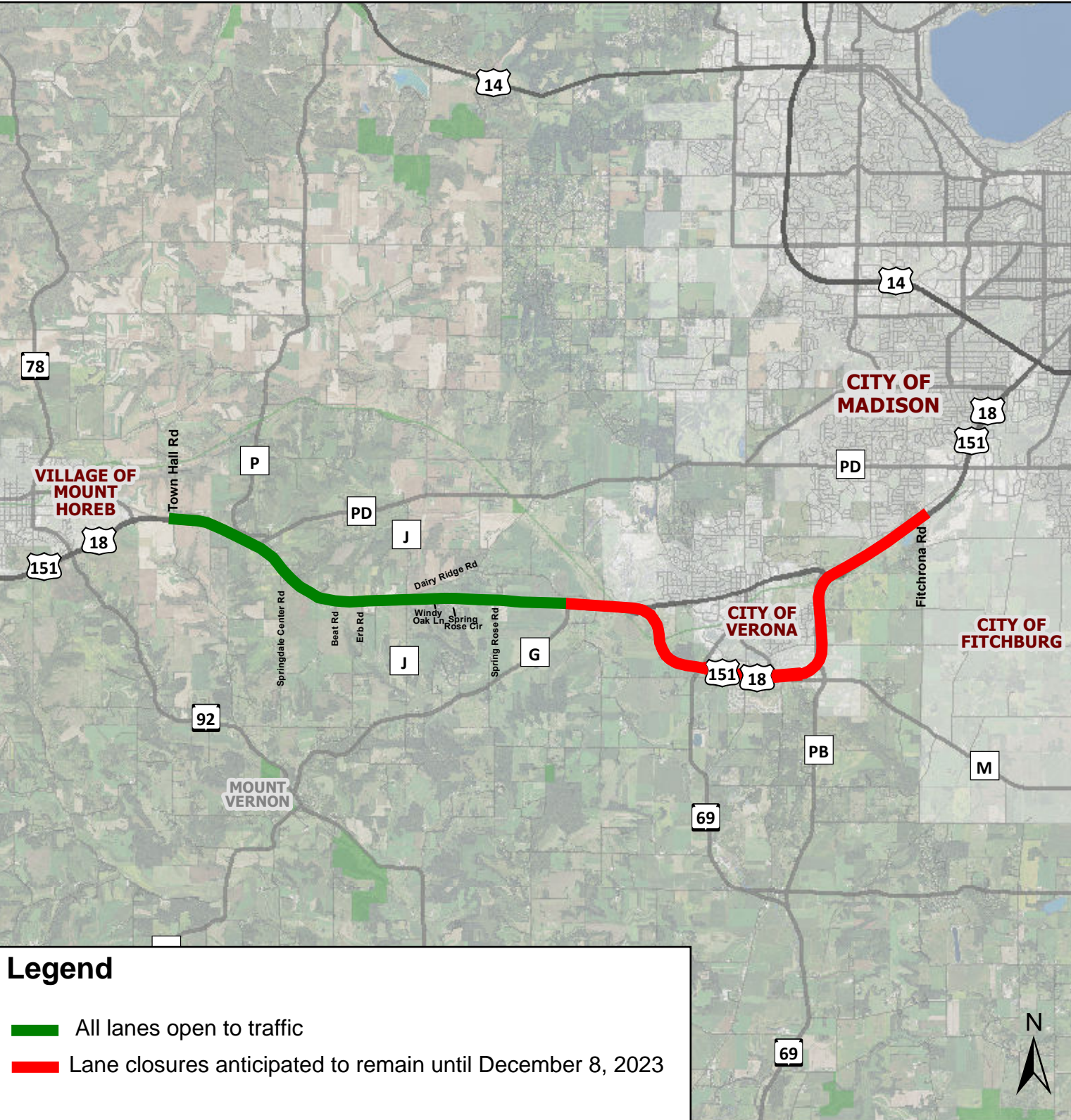
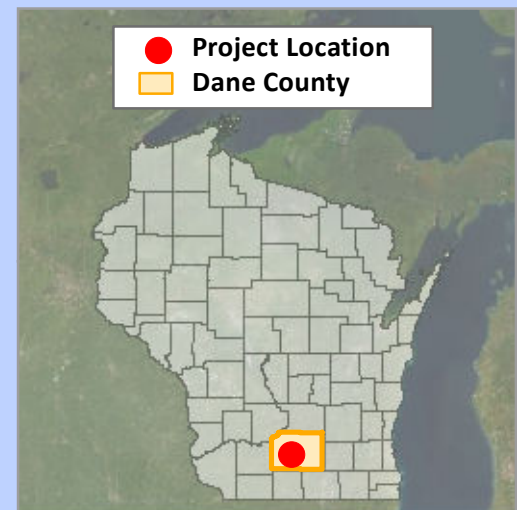
	WB/SB US 18/151		EB/NB US 18/151	
FRI, 12/1	↓	↓	↑	↑
SAT, 12/2	↓	↓	↑	↑
SUN, 12/3	↓	↓	↑	↑
MON, 12/4	↓	↓	↑	↑
TUE, 12/5	↓	↓	↑	↑
WED, 12/6	↓	↓	↑	↑
THU, 12/7	↓	↓	↑	↑
FRI, 12/8	↓	↓	↑	↑
SAT, 12/9	↓	↓	↑	↑
SUN, 12/10	↓	↓	↑	↑

Note: these lane closures are weather dependent and subject to change.

 = Lane Closed

Project Location

Project I.D. 1204-08-35/65
Mount Horeb - Madison
(Town Hall Road to CTH PD)
USH 18
Dane County



Legend

- All lanes open to traffic
- Lane closures anticipated to remain until December 8, 2023