



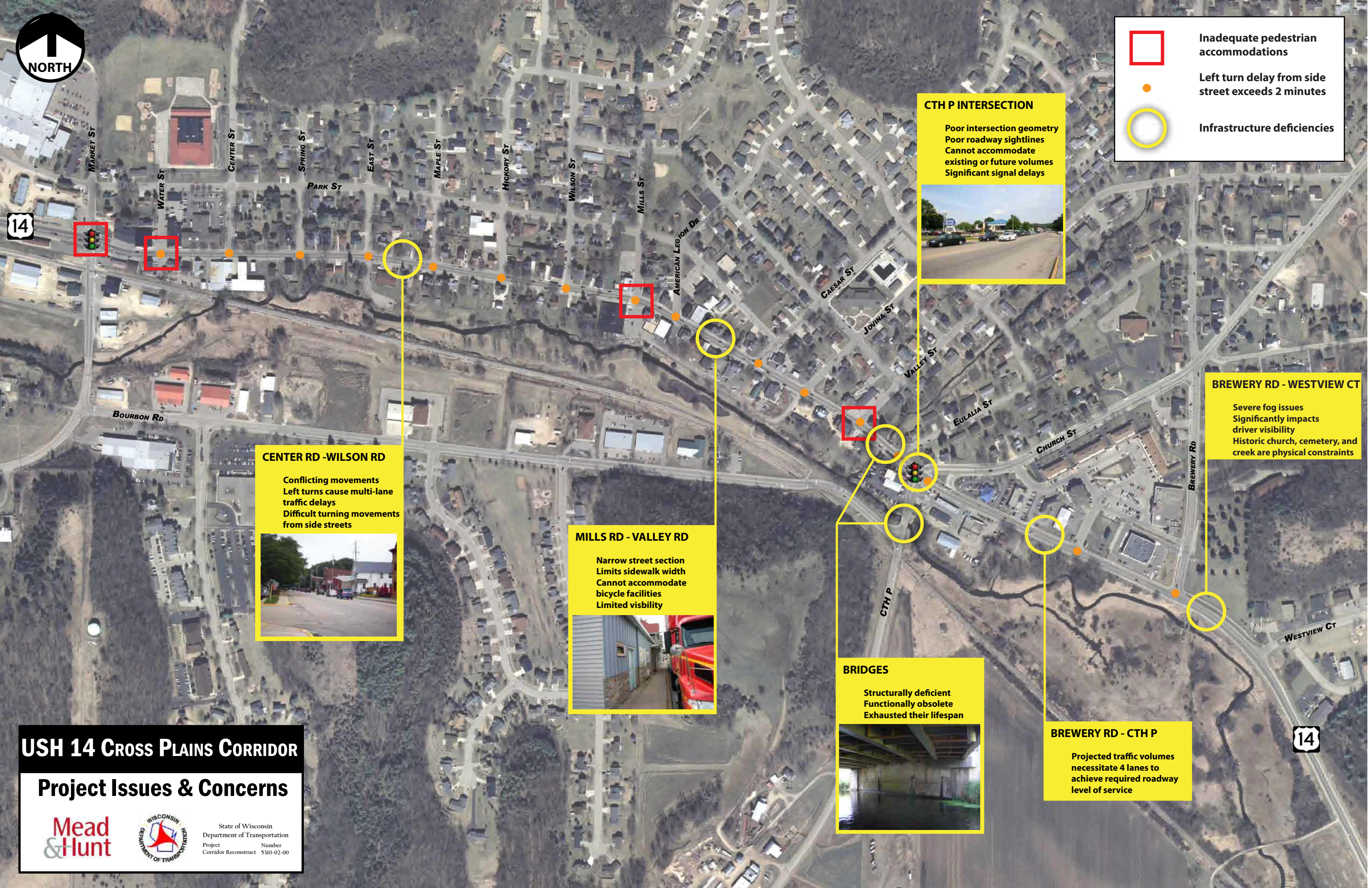
Inadequate pedestrian accommodations



Left turn delay from side street exceeds 2 minutes




Infrastructure deficiencies



CTH P INTERSECTION

Poor intersection geometry
Poor roadway sightlines
Cannot accommodate existing or future volumes
Significant signal delays




CENTER RD - WILSON RD

Conflicting movements
Left turns cause multi-lane traffic delays
Difficult turning movements from side streets




MILLS RD - VALLEY RD

Narrow street section
Limits sidewalk width
Cannot accommodate bicycle facilities
Limited visibility



BRIDGES

Structurally deficient
Functionally obsolete
Exhausted their lifespan



BREWERY RD - WESTVIEW CT



Severe fog issues
Significantly impacts driver visibility
Historic church, cemetery, and creek are physical constraints

BREWERY RD - CTH P

Projected traffic volumes necessitate 4 lanes to achieve required roadway level of service

USH 14 Cross Plains Corridor

Project Issues & Concerns



State of Wisconsin
Department of Transportation
Project Number
Corridor Reconstruct 5310-02-00