

US 12 Bypass South Section Public Information Meeting

February 6, 2013



USH 12 Sauk County



US 12 South Section Preliminary Design Overview

Interchanges

- US 12 Over WIS 136
- US 12 Over CTH W
- All Interchanges utilize Roundabouts

Cross Roads

- Gasser Road Over US 12

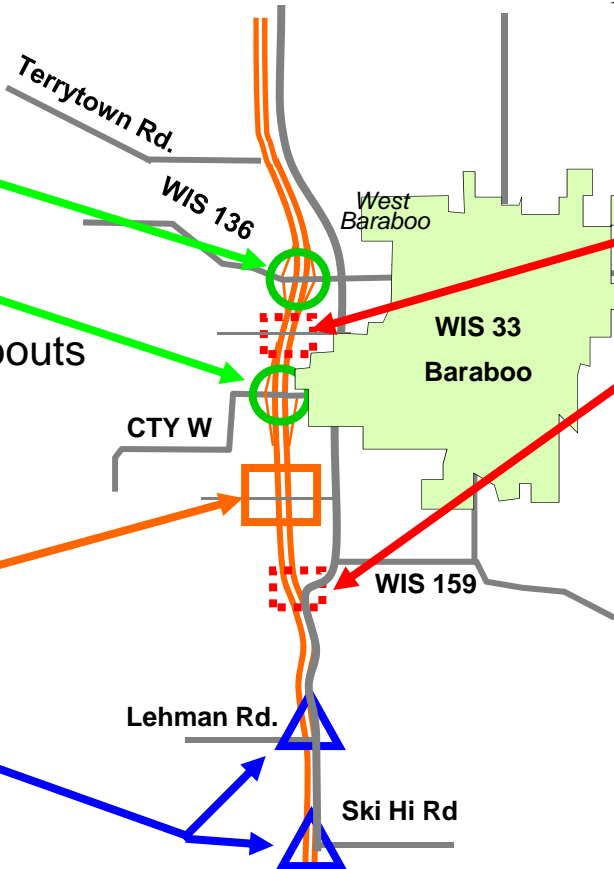
At-Grade Intersections

- Lehman Rd.
- Ski Hi Rd

NORTH

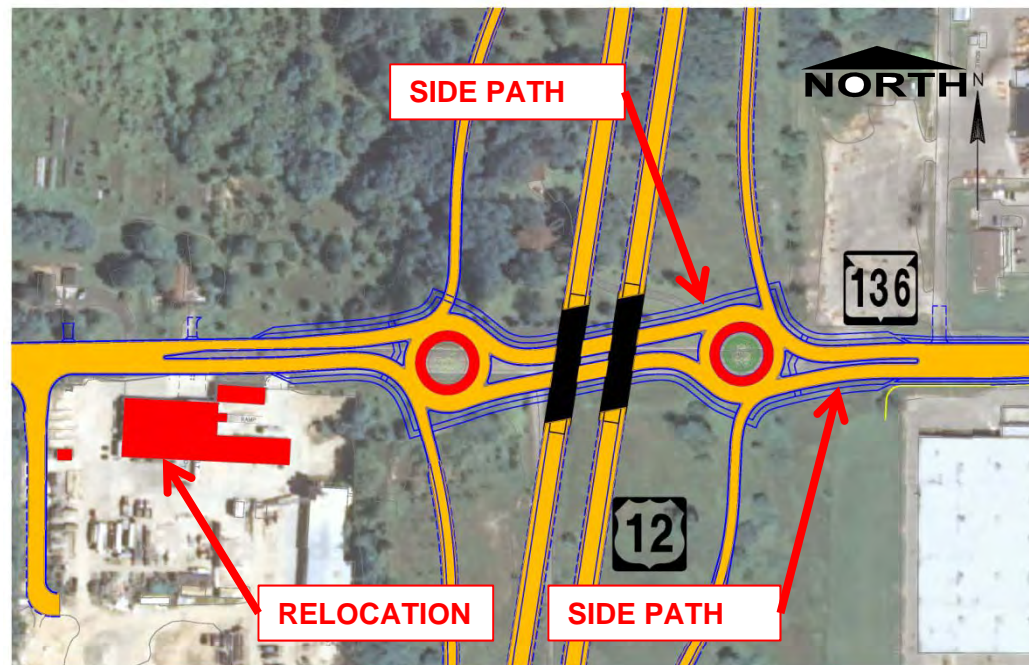
Cul de Sac

- Hatchery Road
- Existing US 12



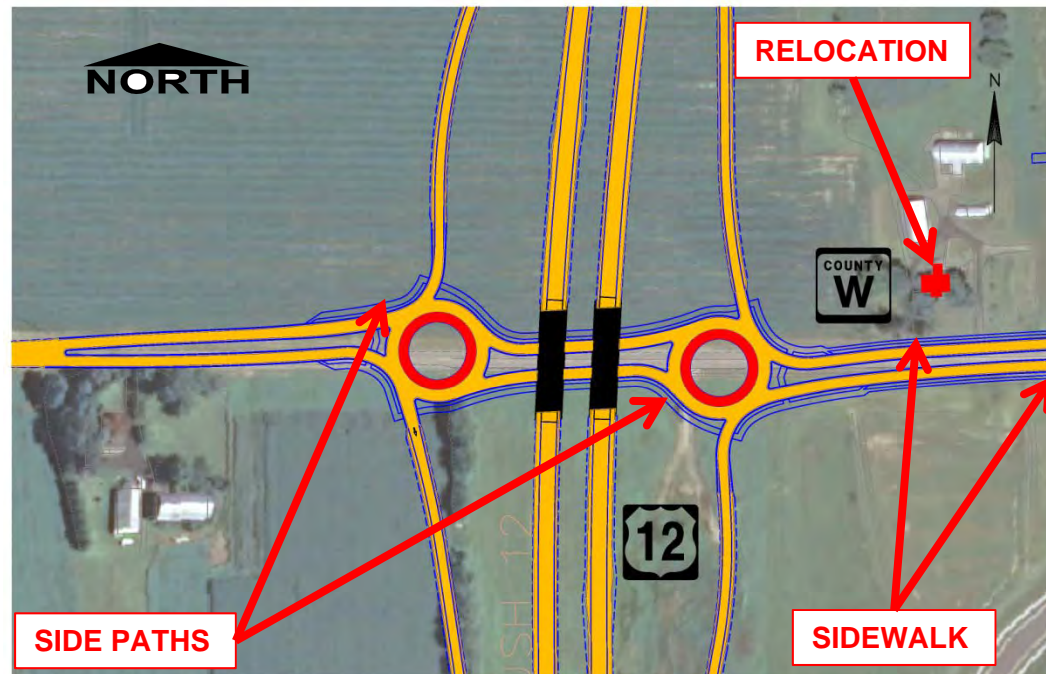
WIS 136 Interchange

- WIS 136 passes under US 12.
- Interchange includes roundabouts at ends of ramps.
- Roundabouts will be dual lane to match existing 4-lane section to the east.
- Provides 10' side paths through roundabouts.



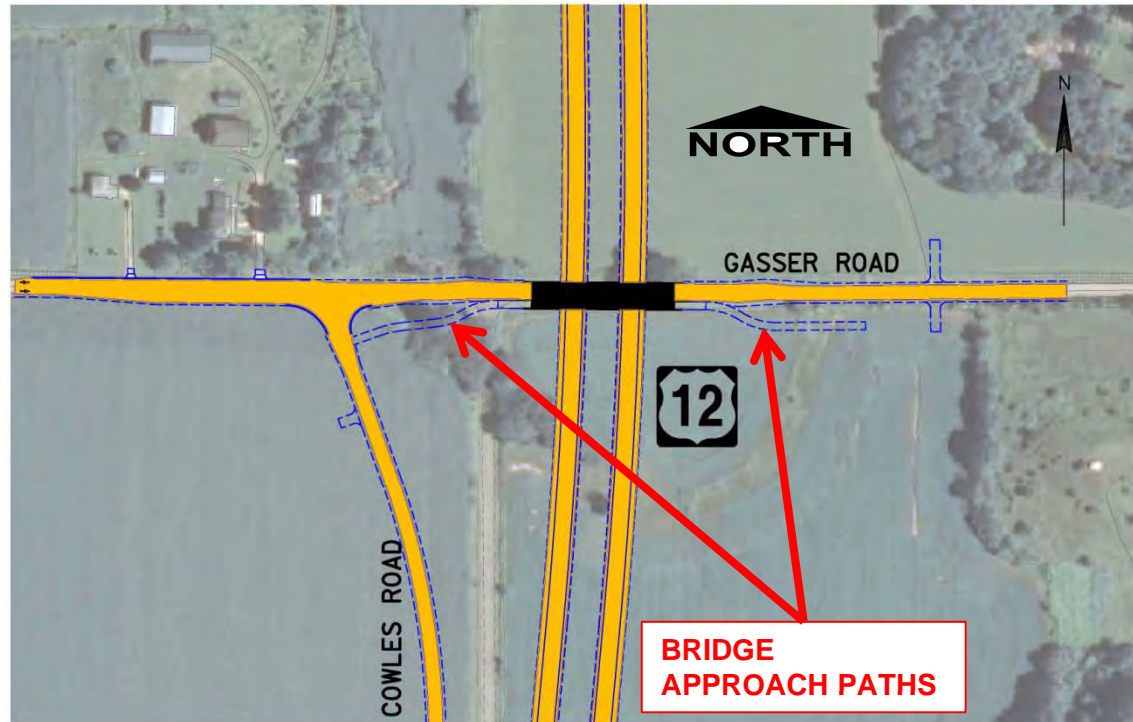
CTH W Interchange

- CTH W passes under US 12.
- Interchange includes single lane roundabouts at ends of ramps.
- Roundabouts are expandable to dual lane.
- Provides 10' side paths through roundabouts.
- Provides sidewalk on north and south side (at request of the City of Baraboo).
- 2-lane section matches proposed CTH W/South Blvd. project east of existing US 12.



Gasser Road

- Gasser Road passes over US 12.
- 22' roadway with 4' paved shoulders
- 26' wide driving surface on bridge.
- 12' path separated by barrier on south side of bridge
- 12' paths leading up to bridge to accommodate snowmobiles.

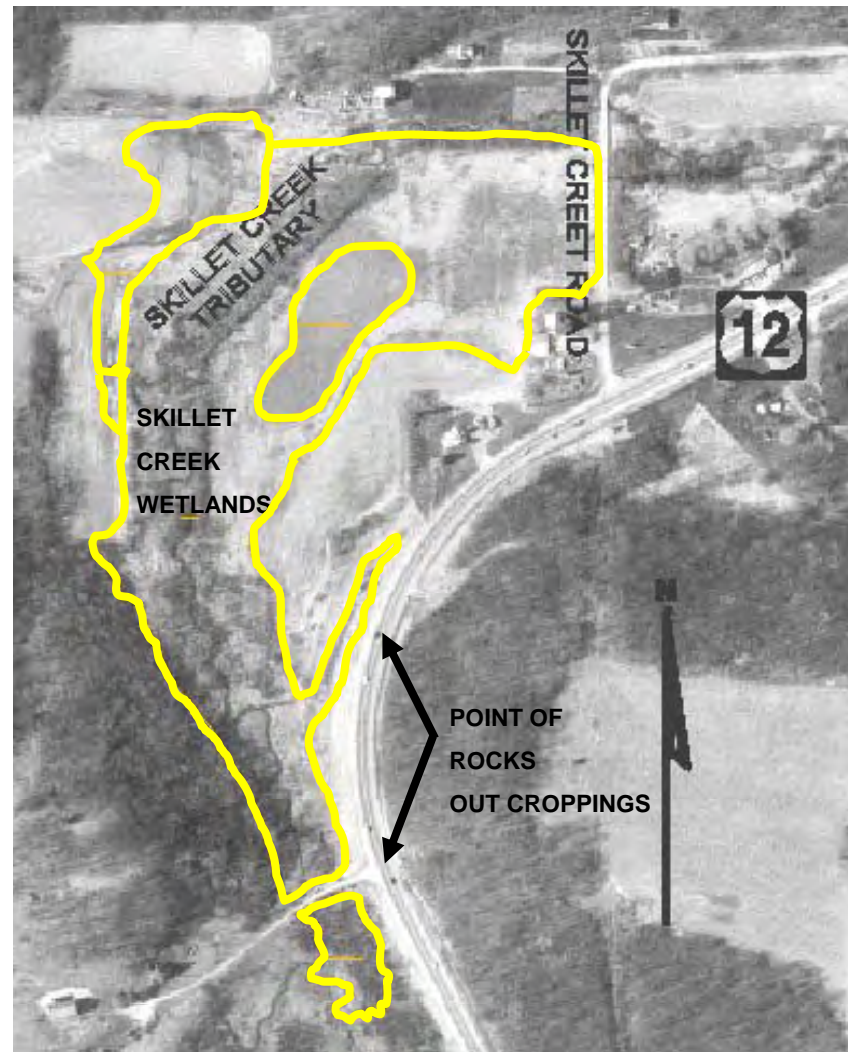


Point of Rocks/Skillet Creek Tributary Area

- FEIS Preferred Alignment cut through Point of Rocks Outcroppings.
- Meetings were held with the Geological Community and Agencies to discuss significance of Point of Rocks

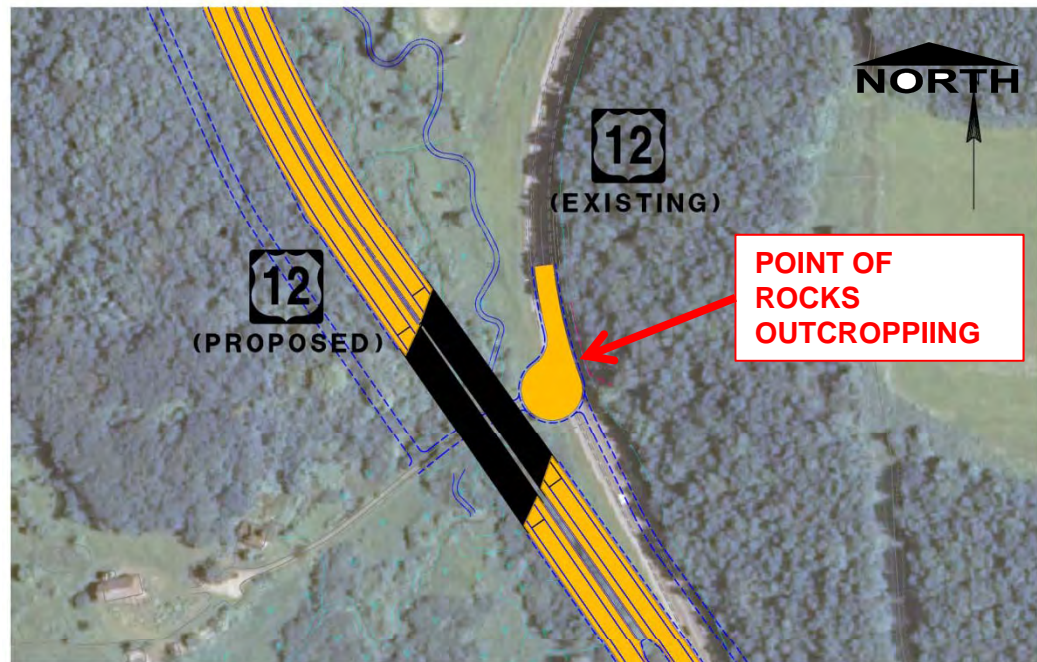
Environmental Constraints

- Point of Rocks outcroppings
 - Nationally recognized as a teaching tool for geologists
 - On National Register of Historic Places
- Skillet Creek Tributary & wetlands
 - High quality wetlands
 - Floodplain
- Within boundary of Baraboo Range National Natural Landmark



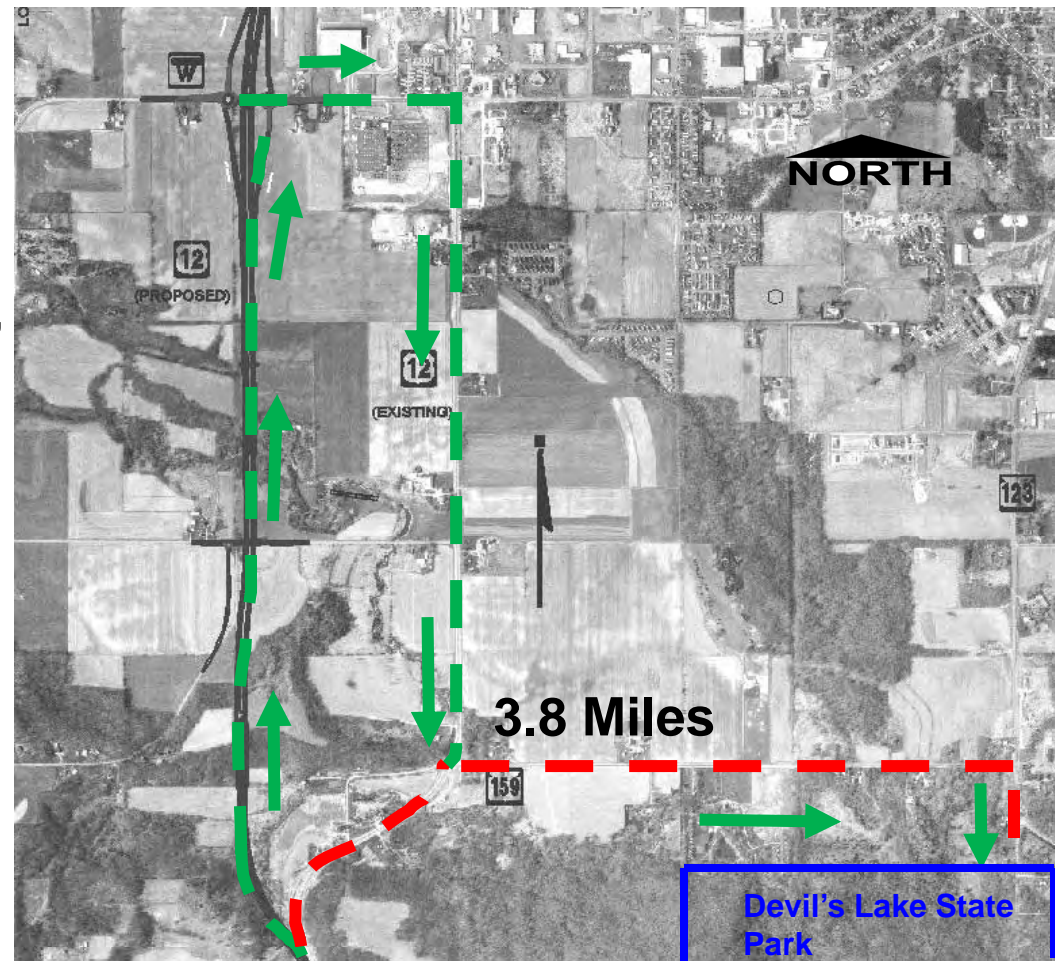
US 12 at Point of Rocks

- Cul de Sac at Point of Rocks Outcropping.
- Narrow median with barrier on US 12 through Skillet Creek Tributary area.
- Safe option with minimized environmental impacts.
- CTH W interchange & existing US 12/CTH W intersection will handle future traffic resulting from cul de sac.
- Main entrance into Devil's Lake Park will be CTH W.



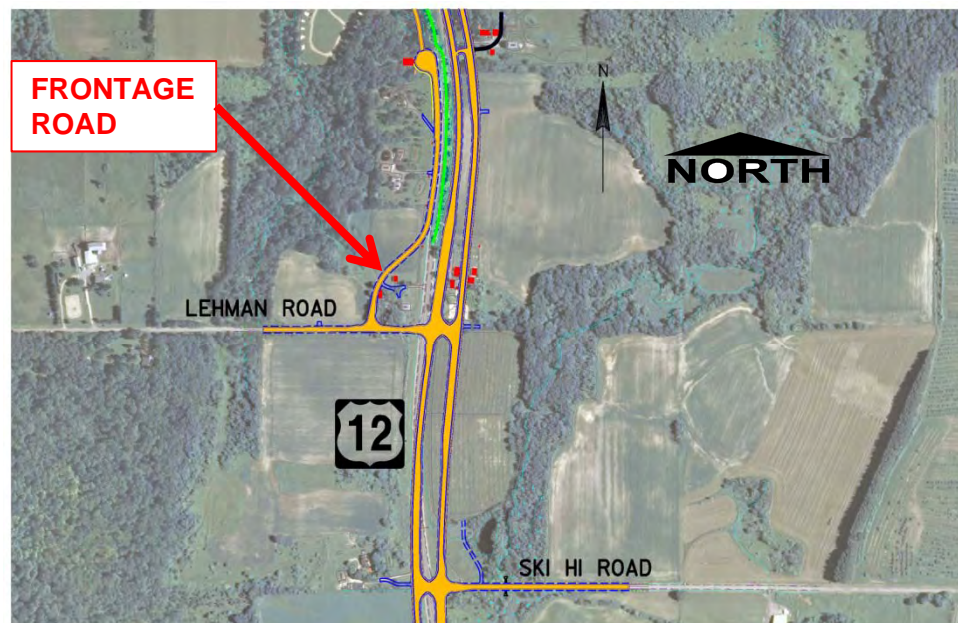
Access to Devil's Lake

- CTH W will be main entrance to Devil's Lake State Park.
- Project will include wayfinding signs on US 12, CTH W, existing US 12 & WIS 159.
- Will add 3.8 additional miles to visitors coming from the south.
- WisDOT recognizes that Ski Hi Road will see additional traffic.



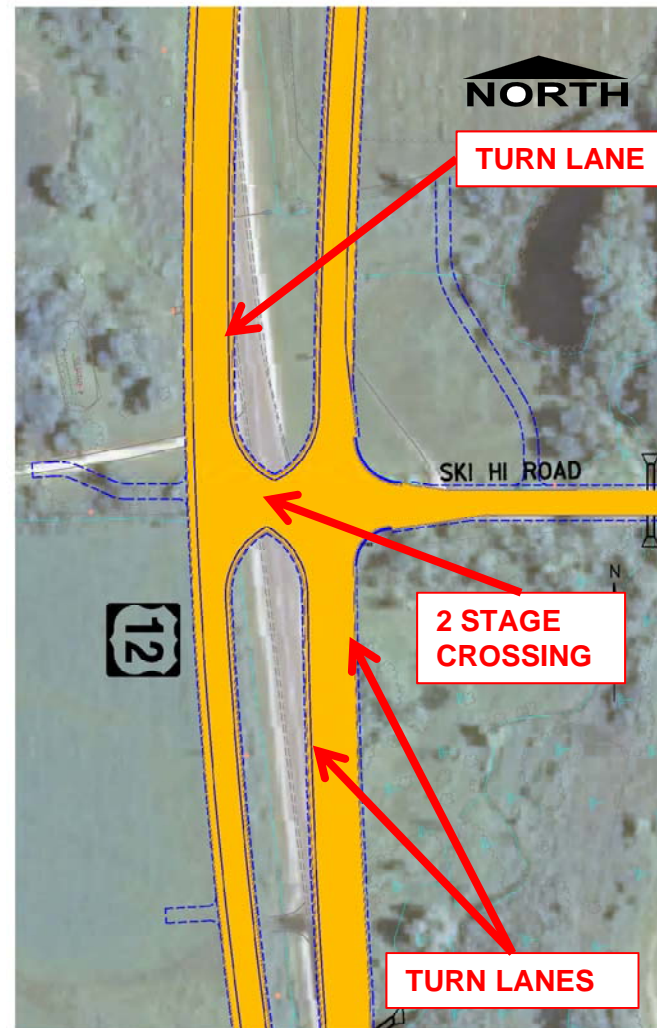
Lehman Road-Ski Hi Road Area

- Full access intersections.
- 100' wide median to provide a 2-stage crossing.
- Left and right turns lanes designed to meet current standards.
- Frontage road west of US 12 north from Lehman Road.



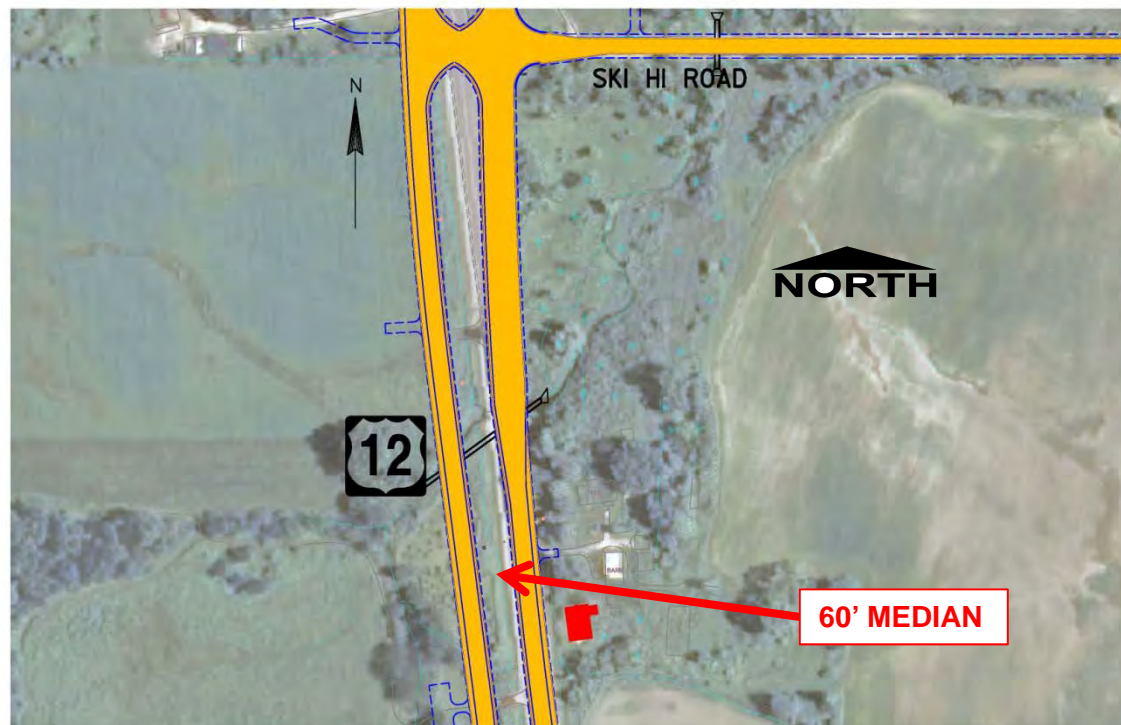
Ski Hi Road Intersection

- Full access intersection.
- 100' wide median to provide a 2-stage crossing.
- Left and right turns lanes designed to meet current standards.
- Safe intersection.



Ski Hi Road – End of Project

- Median narrows from 100' to 60' (standard) south of Ski Hi Road
- Matches into existing 4-lane section 0.75 miles south of Ski Hi Road.



4f/6f Mitigation

- 4f/6f Mitigation is required by federal law when there is a taking from a publicly funded facility such as a park or recreational area.
- The US 12 project involves purchasing right-of-way from Mirror Lake State Park and Devil's Lake State Park.
- The 4f/6f mitigation entails replacement of the land with land and facilities that are of comparable value and function.



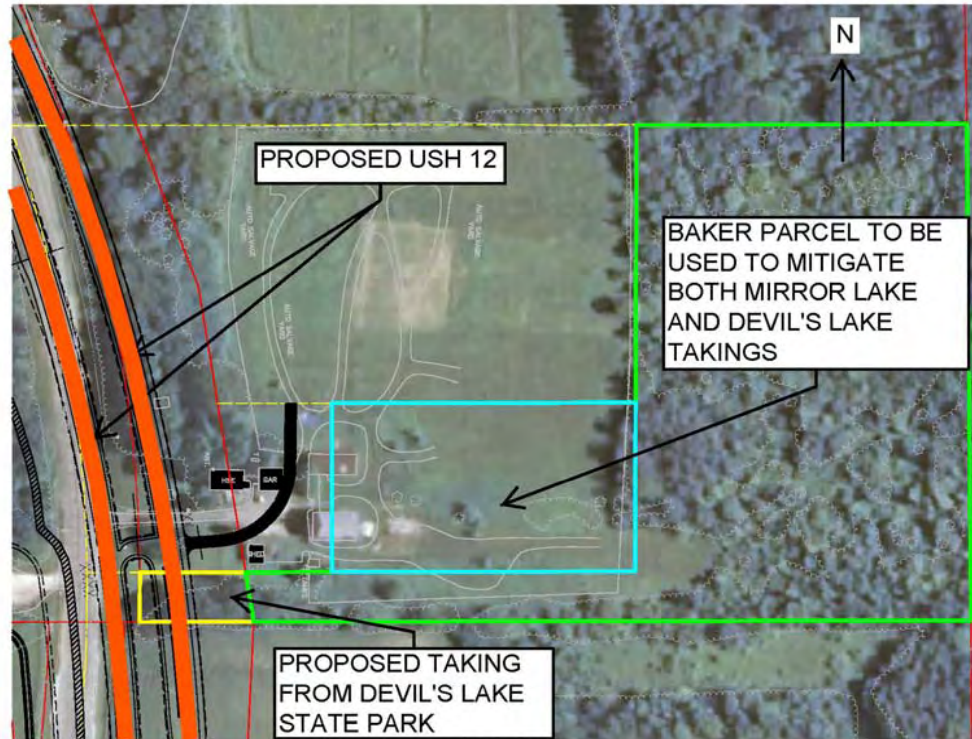
4f/6f Mitigation

- The taking from Mirror Lake State Park is required to build bicycle and pedestrian accommodation across I-94 that satisfies the requirement in the FEIS.



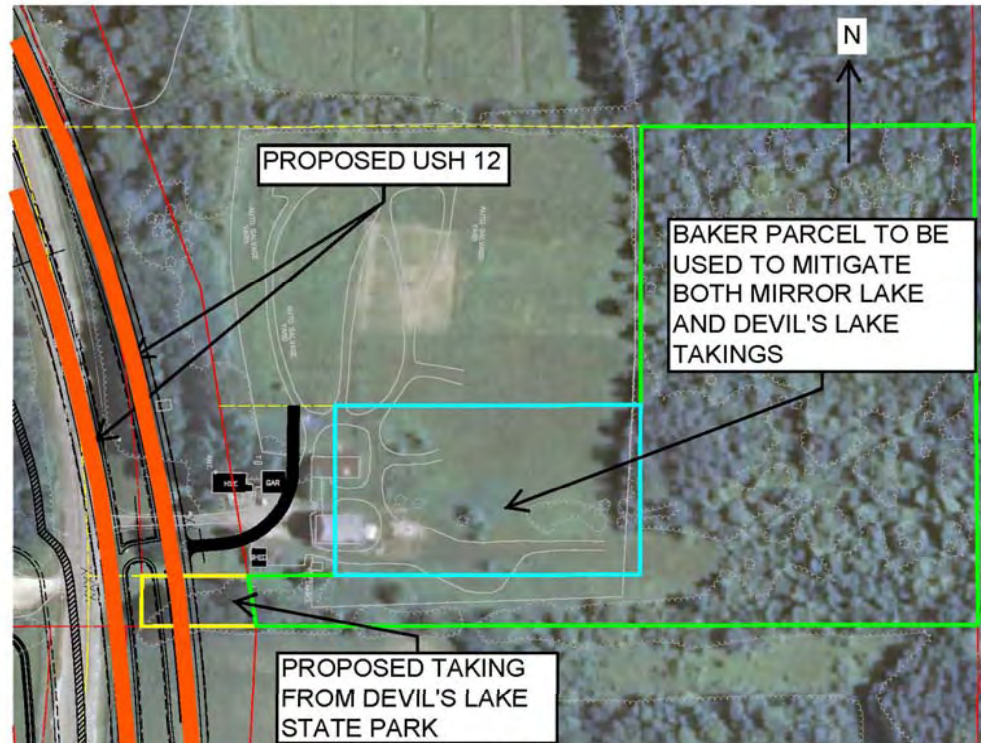
4f/6f Mitigation

- The taking from Devil's Lake State Park is required to build a drainage ditch along the South Section of the US 12 Bypass just north of Lehman Road.



4f/6f Mitigation

- The proposed mitigation site for the Mirror Lake and Devil's Lake takings is the Baker Parcel just north of Lehman Road.
- WisDOT is also investigating other sites.

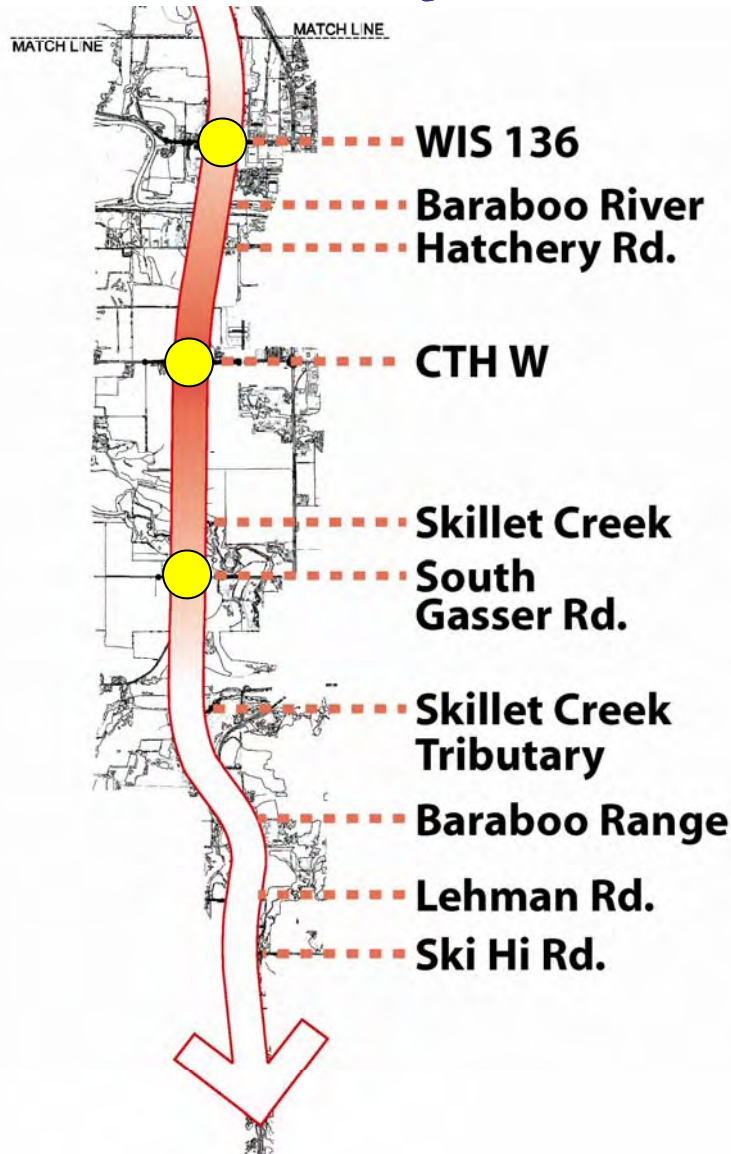


Community Sensitive Design (CSD)

- CSD funds are used by the Wisconsin Department of Transportation (WisDOT) to provide harmony between the roadway and the natural, social, economic, and cultural environments.
- Amenities can include:
 - Aesthetic treatment to structures (retaining walls, bridges)
 - Landscaping
 - Bicycle/Pedestrian Accommodations (South Gasser Road)
 - Native prairie planting/seeding
 - Decorative amenities i.e. fencing, lighting, special pavements
 - Wildlife crossings (Skillet Creek, Skillet Creek Tributary, Farr Property)



Community Sensitive Design - Structures



US 12 at WIS 136:

US 12 goes over WIS 136, therefore the bridge is highly visible from the local roadway.

US 12 at Hatchery Rd:

No roadway crossings; no structures.

US 12 at CTH W:

US 12 goes over CTH W, therefore the bridge is highly visible from the local roadway.

US 12 at South Gasser Rd:

US 12 goes under South Gasser Rd, therefore the bridge is highly visible from US 12.

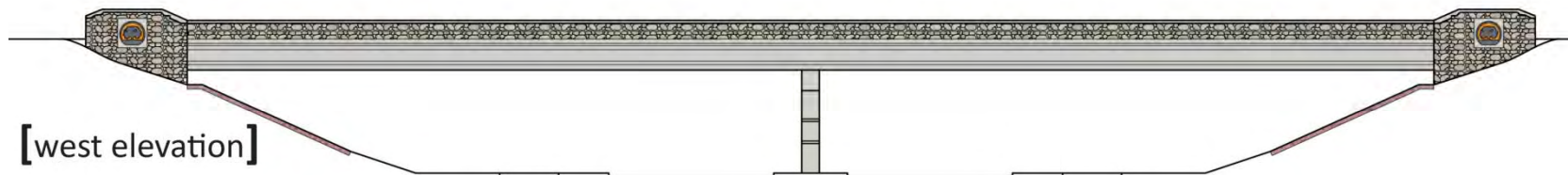
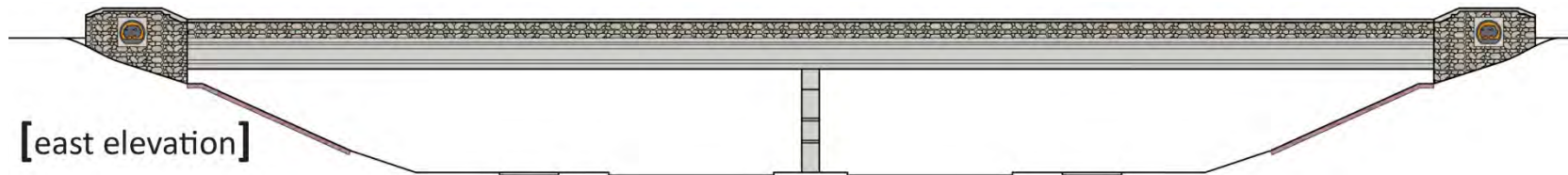
US 12 at Lehman Rd and Ski Hi Rd:

At grade crossing; no structures.

Other Structures:

Baraboo River
Skillet Creek
Skillet Creek Tributary

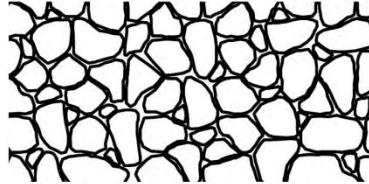
Community Sensitive Design – Structures



WIS 136



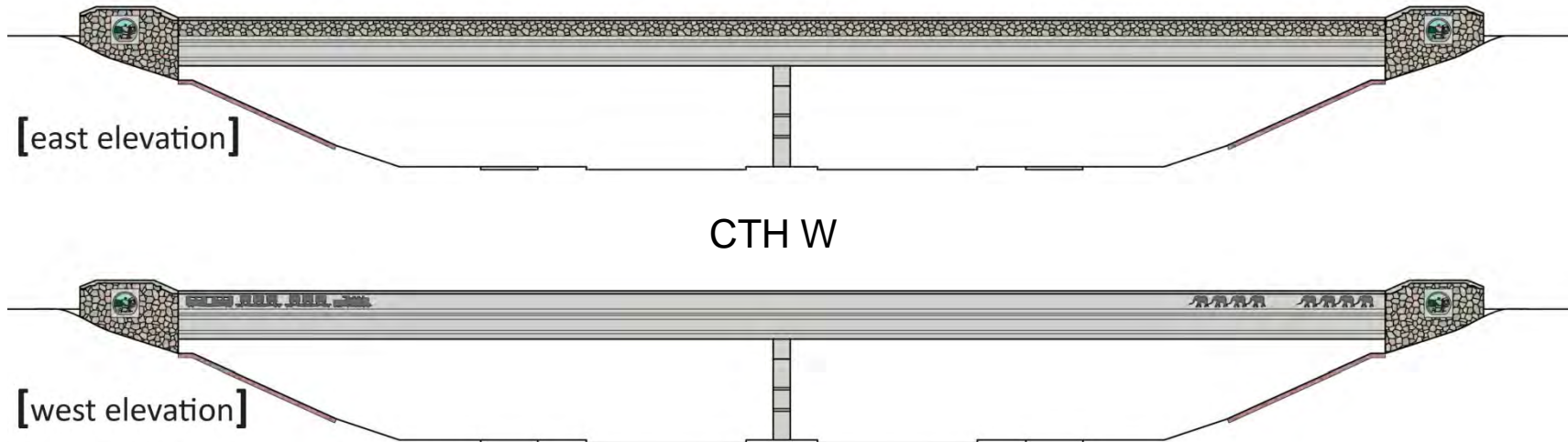
Random Fieldstone Pattern



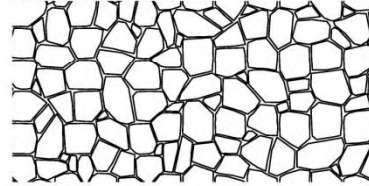
Broadway Bridge Color Palette



Community Sensitive Design - Structures



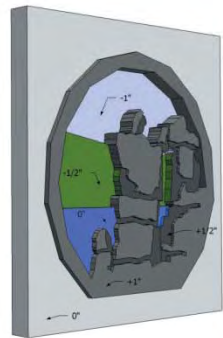
Baraboo Quartzite Pattern



Broadway Bridge Color Palette



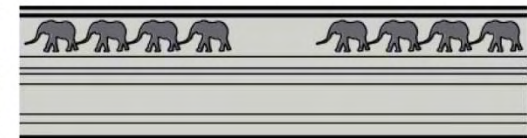
[formliner detail and color palette]



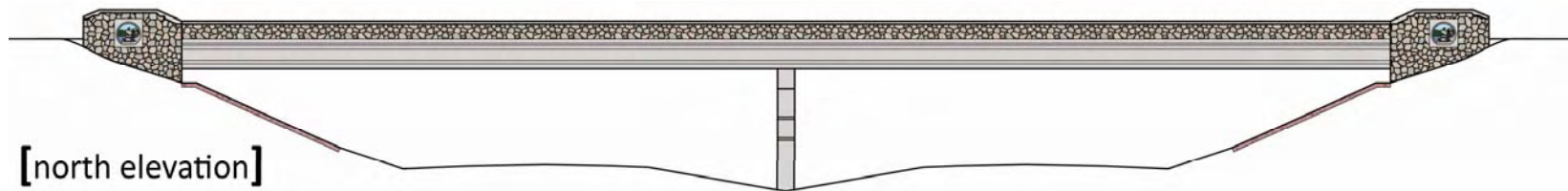
[wing wall icon relief + coloring]



[parapet detail - west elevation]

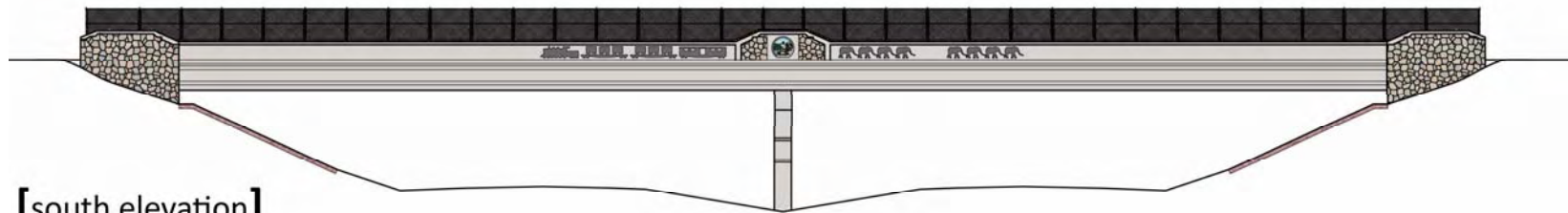


Community Sensitive Design - Structures



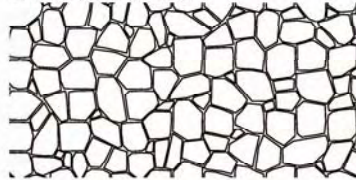
[north elevation]

SOUTH GASSER ROAD



[south elevation]

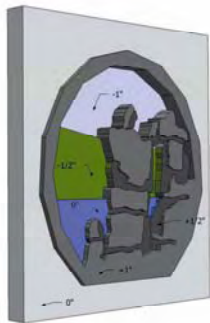
Baraboo Quartzite Pattern



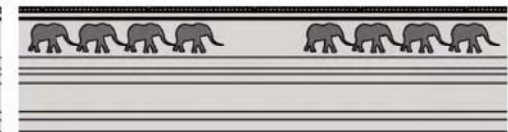
Broadway Bridge Color Palette



[formliner detail and color palette]

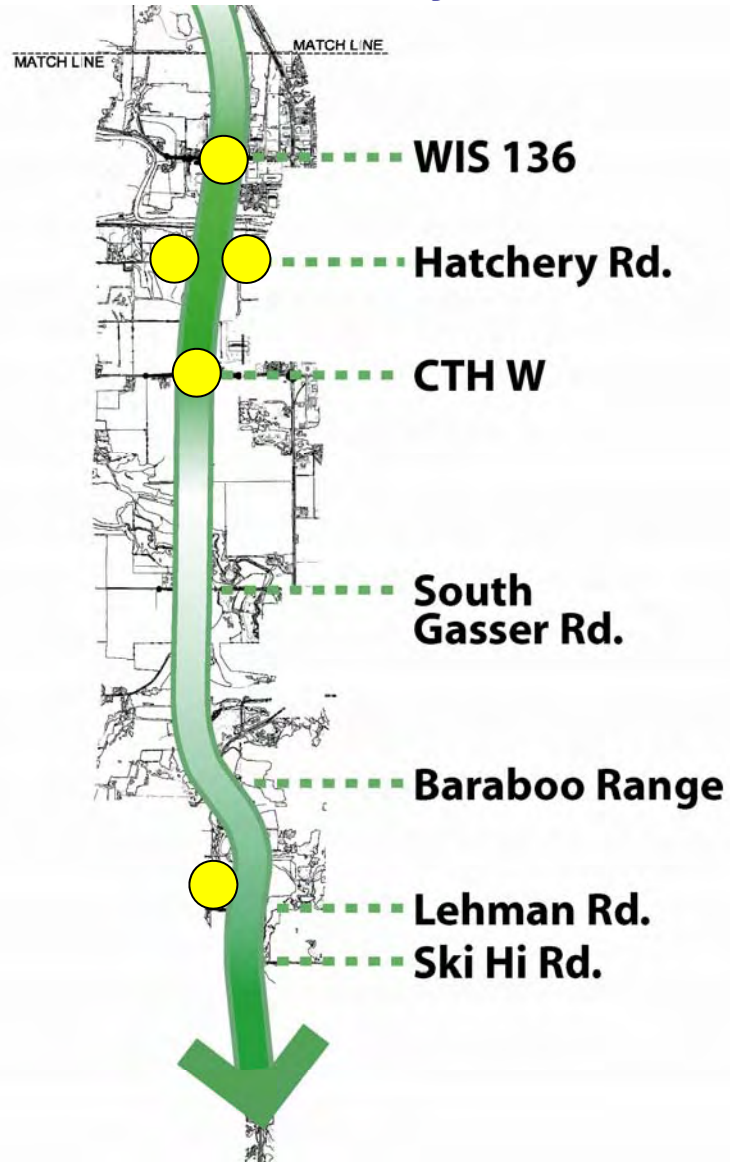


[wing wall icon relief + coloring]



[parapet detail - south elevation]

Community Sensitive Design - Landscape



WIS 136 Interchange:

Two (2) roundabouts on WIS 136 at the US 12 ramp terminals.

Hatchery Rd:

Two (2) cul-de-sacs, one on either side of US 12..

CTH W Interchange:

Two (2) roundabouts on CTH W at the US 12 ramp terminals.

Lehman Frontage Road Berm:

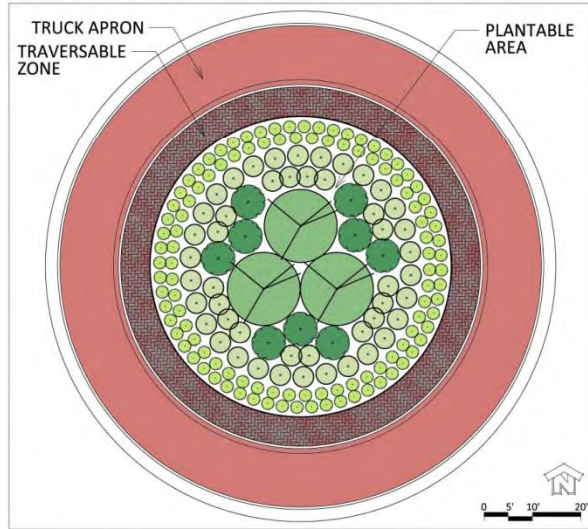
Approximately 1,500 linear feet of berm and plantings on the west side of US 12.

Other Opportunities:

Project-specific prairie seed mix for flat-bottomed swales at various locations throughout the corridor.

Community Sensitive Design - Landscape

WIS 136 - Concept A Plan



- LEGEND**
- Multi-stem Tree
 - Large Shrub
 - Medium Shrub
 - Small Shrub

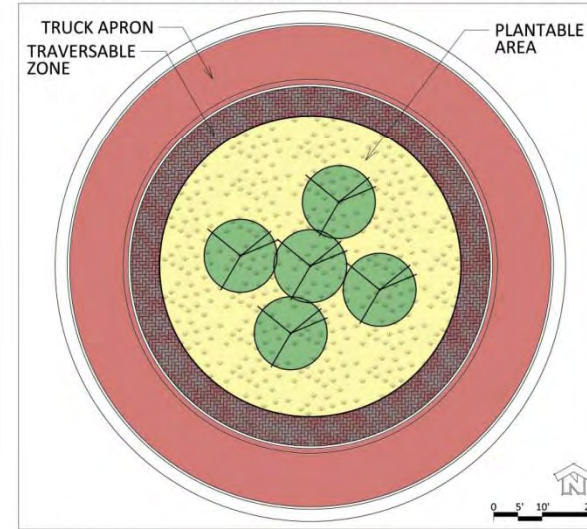
PLANT PALETTE

| Common Name | Scientific Name | Mature Size | Description |
|---------------------------------------|---|-----------------------|--|
| Multi-stemmed Ornamental Trees | | | |
| (Spiraea) Prince of Wales (Aubletii) | <i>Amelanchier alnifolia</i> Purshiana Claret | 20-30 ft x 18-20 ft | Upright, somewhat bushy, white flowers, purple fruit, brilliant red fall color |
| Heathorn, Winter King (Aubletii) | <i>Crataegus viridis</i> Winter King | 25-30 ft x 20-30 ft | Round-topped, vase-shaped habit, white flowers, reddish-purple, fall color, red fruit |
| Crabapple, Double (Wynona) (Aubletii) | <i>Malus coronata</i> Wynona | 18-20 ft x 18-20 ft | White flower, bright red fruit |
| Amur Chokeberry (Aubletii) | <i>Malus alba</i> | 20-30 ft x 18-20 ft | Compact, open habit, brassy copper bark, fragrant white flowers, yellow fall color |
| Evergreen Shrubs | | | |
| Juniper, Blue | <i>Juniperus chinensis</i> Blue | 8-10 ft x 4-6 ft | Upright, informal dense branching habit with dense blue-green foliage |
| Juniper, 3-way Compact | <i>Juniperus x pfitzeriana</i> Kallay's Compact | 2-3 ft x 3-6 ft | Compact, upright with horizontally spreading branches and a somewhat flat top |
| Ball Ornamental Shrubs | | | |
| Burning Bush, Chicago Fire | <i>Eurotia alata</i> Timber Creek | 8-10 ft x 8-10 ft | Excellent dense branching and upright form, bright red fall color |
| Viburnum Amurshrub (Salem) | <i>Viburnum dentatum</i> Triple Summer | 8-12 ft x 8-12 ft | Round-topped, open form, white flower, blue fruit, mid-range vigor, no odor |
| Intermediate Ornamental Shrubs | | | |
| Chokeberry, Double Pink, Salem Magic | <i>Amelanchier canadensis</i> Salem Magic | 3-5 ft x 3-6 ft | Upright, compact form, white flowers, bright red fruit, bright red fall color |
| Mockorange, Boulder Blue | <i>Philadelphus x sylvaticus</i> Boulder Blue | 5-6 ft x 5-6 ft | Upright, arching branches with large white flowers in spring |
| Small Ornamental Shrubs | | | |
| Spiraea, Double | <i>Spiraea betulifolia</i> Tor | 2 ft x 2 ft | Compact form, white flower, bright red fruit, red to copper fall color |
| St. Louis Pink (Salem) | <i>Hydrangea kalmianae</i> Salem | 2-3 ft x 2-3 ft | Compact form, white flower, bright red fruit |
| Ornamental Grasses | | | |
| Feather Reed Grass, Karl Foerster | <i>Calamagrostis acutiflora</i> Karl Foerster | 36-40" ft x 18-24" ft | Upright ornamental grass with buff colored vertical sheaths in summer/fall |
| Swampgrass, Heavy Blue | <i>Panicum virgatum</i> Heavy Blue | 44-60" ft x 12-14" ft | Upright grass with metallic blue foliage and strong, upright habit, foliage turns yellow to burnt yellow, excellent as a backdrop to birds |
| Swampgrass, Shimmering | <i>Panicum virgatum</i> Shimmering | 24-30" ft x 24-30" ft | Columnar ornamental grass with bright color, foliage turns beige in winter |
| Ultra Shimmer - The Blues | <i>Eleocharis acicularis</i> The Blues | 18-20" ft x 18-24" ft | Upright columnar habit with rich blue color, very succulent leaves and spikes |



WIS 136 - Concept A Elevation

WIS 136 - Concept B Plan



- LEGEND**
- Multi-stem Tree
 - Grass Groundcover

PLANT PALETTE

| Common Name | Scientific Name | Mature Size | Description |
|---------------------------------------|--------------------------------------|-----------------------|---|
| Multi-stemmed Ornamental Trees | | | |
| Heathorn, Winter King (Aubletii) | <i>Crataegus viridis</i> Winter King | 25-30 ft x 20-30 ft | Round-topped, vase-shaped habit, white flowers, reddish-purple, fall color, red fruit |
| Crabapple, Double (Wynona) (Aubletii) | <i>Malus coronata</i> Wynona | 18-20 ft x 18-20 ft | White flower, bright red fruit |
| Native Grass Groundcover | | | |
| Ultra Shimmer | <i>Eleocharis acicularis</i> | 24-30" ft x 18-24" ft | Upright native bluestem with foliage color ranging accented orange and reds in fall |



WIS 136 - Concept B Elevation



Community Sensitive Design - Landscape

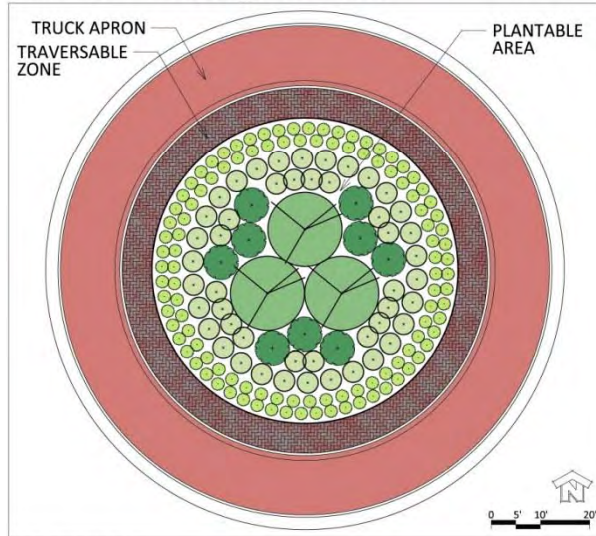


HATCHERY ROAD CUL-DE-SACS



Community Sensitive Design - Landscape

CTH W - Concept A Plan



- LEGEND**
- Multi-stem Tree
 - Large Shrub
 - Medium Shrub
 - Small Shrub

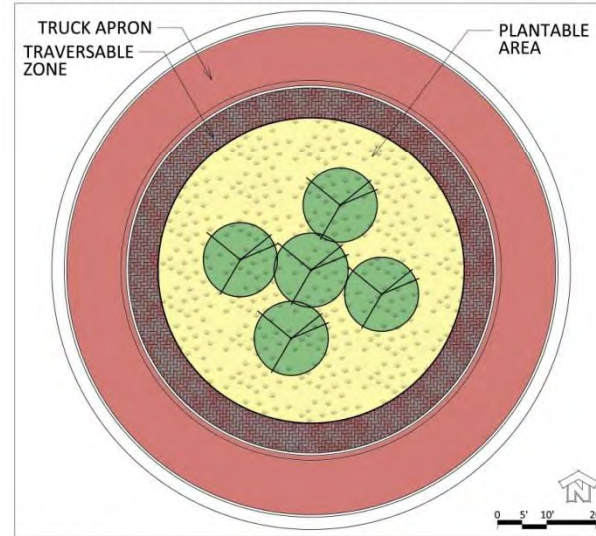
PLANT PALETTE

| Common Name | Scientific Name | Mature Size | Description |
|---------------------------------------|--|-----------------------|--|
| Multi-Stemmed Ornamental Trees | | | |
| Hawthorn, Cockspur (Multi-stem) | <i>Crataegus crugata</i> var. <i>serotina</i> | 20-30' H x 20-30' sp. | White flower, bright red fruit |
| Crabapple, Prairie (Multi-stem) | <i>Malus Prairie</i> | 20' H x 20' sp. | Conical flowers, red-purple fruit |
| Blackthorn, Prairie (Multi-stem) | <i>Prunella pennsylvanica</i> | 15-18' H x 8-12' sp. | Broad form, white clusters of flowers, bluish-black fruit, purple-red fall color |
| European Shrubs | | | |
| Juniper, Blue | <i>Juniperus chinensis 'Suecica'</i> | 8-10' H x 4-6' sp. | Upright, informal (open branching) habit with sparse blue-green foliage |
| Juniper, Yellow | <i>Juniperus x cylindrica 'Kobold's Compact'</i> | 2-3' H x 2' sp. | Dwarf Juniper with horizontally spreading branches and a somewhat flat top |
| Tall Ornamental Shrubs | | | |
| Amur Maple, Compact | <i>Acer ginnala 'Compacta'</i> | 6-10' H x 6-10' sp. | Dense and compact with orange to red fall color |
| Redbark, Flower | <i>Physocarpus opulifolius 'Korean'</i> | 12' H x 6' sp. | Change-brand selection, post-hills and white flowers |
| Intermediate Ornamental Shrubs | | | |
| Redbark, Common | <i>Physocarpus opulifolius</i> | 6-8' H x 6-8' sp. | Upright, spreading shrub, single white flowers, reddish green fall color |
| Chokeberry, Black Autumn Magic | <i>Aronia melanocarpa 'Autumn Magic'</i> | 3-5' H x 3-4' sp. | Upright, compact form, white flowers, bright red fruit, bright red fall color |
| Small Ornamental Shrubs | | | |
| Spine, Globe Fringed | <i>Rhus aromatica 'Globe'</i> | 2-3' H x 5-6' sp. | Compact form, white flower, bright red fruit, red fall color |
| Chokeberry, Black Autumn Magic | <i>Aronia melanocarpa 'Autumn Magic'</i> | 2-3' H x 2-3' sp. | Compact form, white flower, bright red fruit, red fall color |
| Grass-like Grasses | | | |
| Bottlebrush, Shermans | <i>Panicum virgatum 'Shermans'</i> | 24-36" H x 24-30" sp. | Columnar ornamental grass with burgandy color; bludge forms large in winter |
| Little Bluestem, The Blues | <i>Schizopygium sanguineum 'The Blues'</i> | 24-36" H x 18-24" sp. | Upright native grass with foliage color range according to blue and purple |



CTH W - Concept A Elevation

CTH W - Concept B Plan



- LEGEND**
- Multi-stem Tree
 - Grass Groundcover

PLANT PALETTE

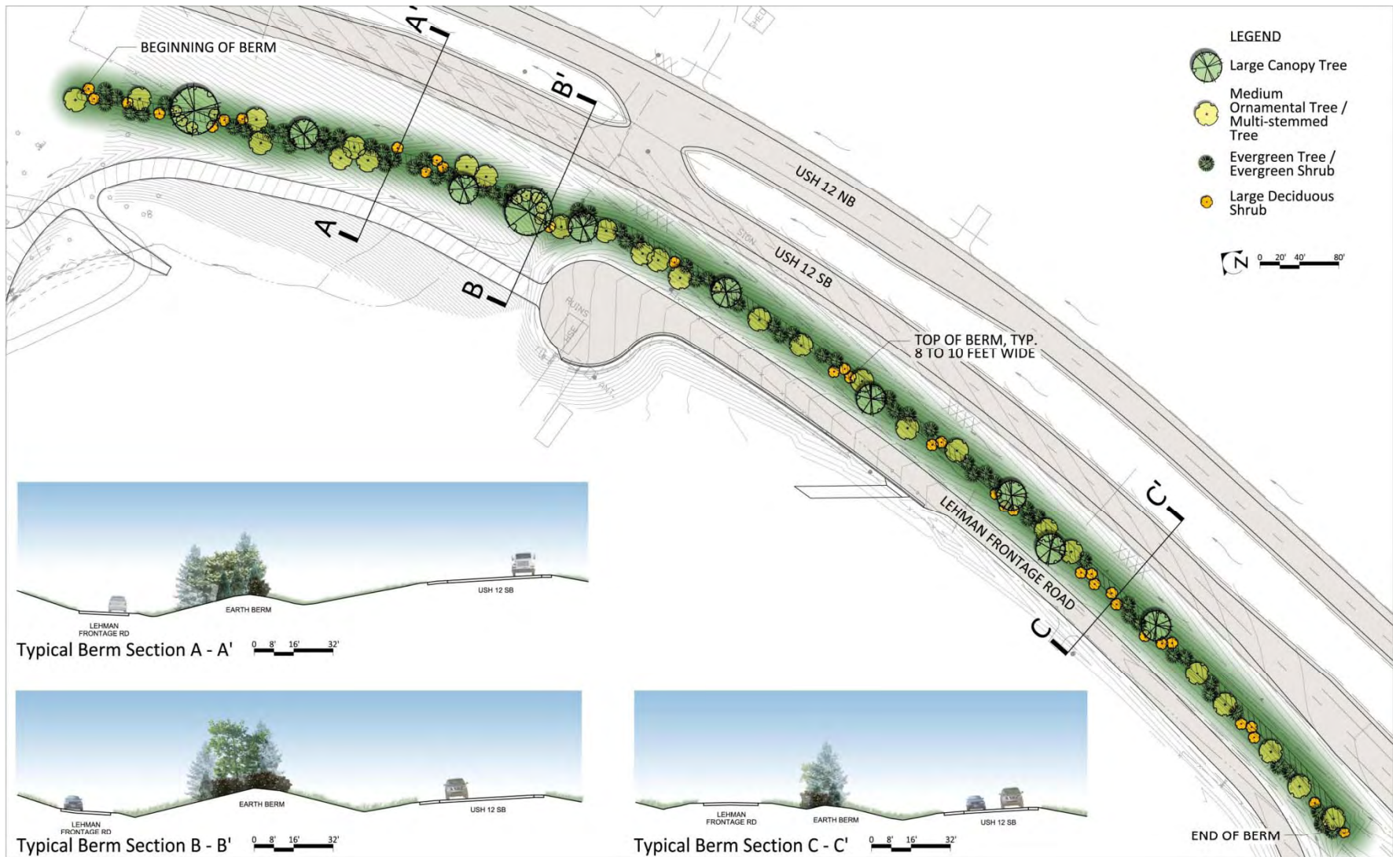
| Common Name | Scientific Name | Mature Size | Description |
|---------------------------------------|---|------------------------|--|
| Multi-Stemmed Ornamental Trees | | | |
| Hawthorn, Cockspur (Multi-stem) | <i>Crataegus crugata</i> var. <i>serotina</i> | 20-30' H x 20-30' sp. | White flower, bright red fruit |
| Crabapple, Prairie (Multi-stem) | <i>Malus Prairie</i> | 20' H x 20' sp. | Conical flowers, red-purple fruit |
| Blackthorn, Prairie (Multi-stem) | <i>Prunella pennsylvanica</i> | 15-18' H x 8-12' sp. | Broad form, white clusters of flowers, bluish-black fruit, purple-red fall color |
| Native Grass Groundcover | | | |
| Stucco Grass | <i>Bouteloua curtipendula</i> | 24-36" H x 12"-18" sp. | Native grass with cat-like seed spikes, golden brown to reddish in fall |



CTH W - Concept B Elevation



Community Sensitive Design - Landscape



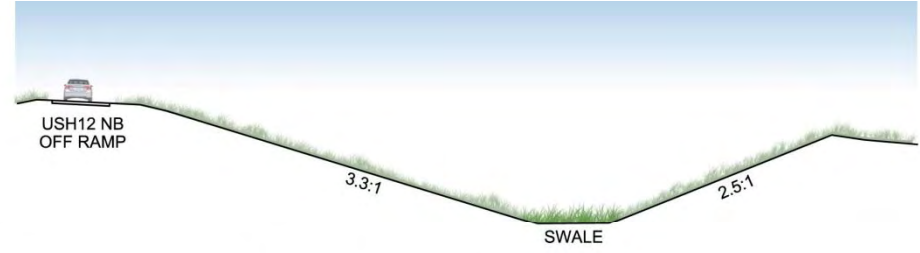
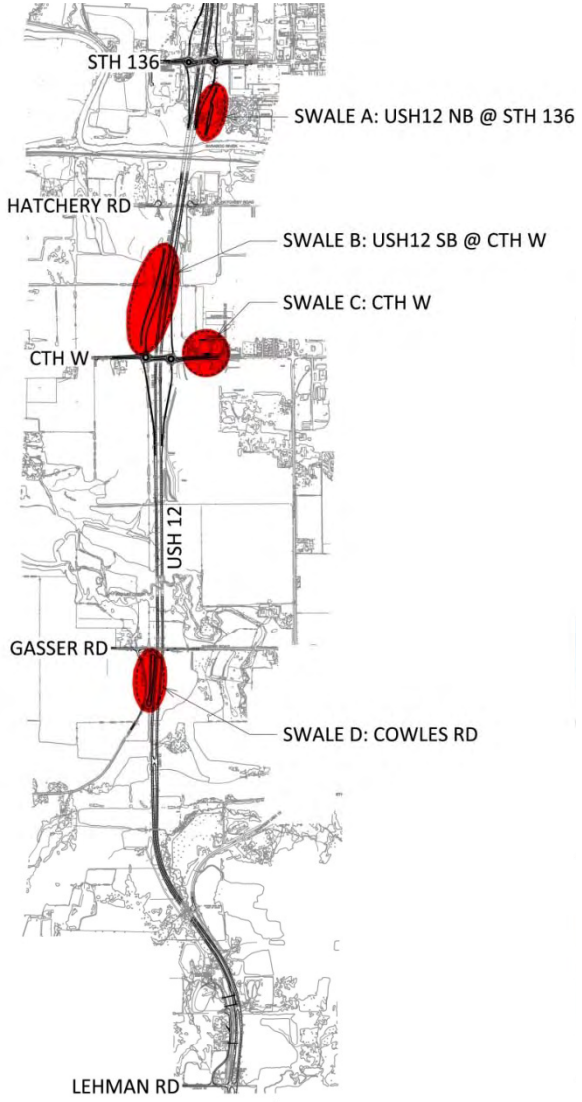
LEHMAN FRONTAGE ROAD BERM

February 6, 2013

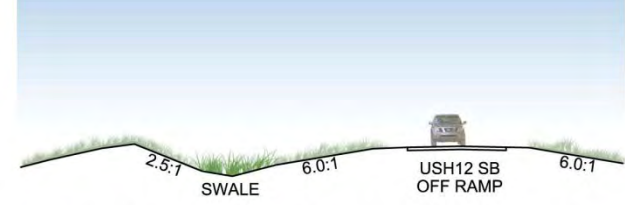
USH 12 Sauk County



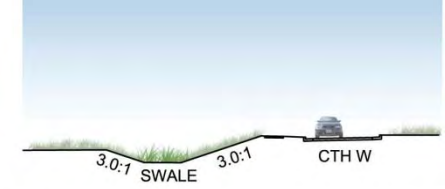
Community Sensitive Design - Landscape



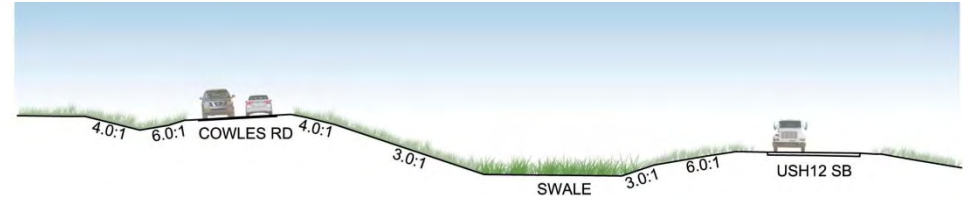
Typical Swale Section A 0 10' 20' 40'



Typical Swale Section B 0 10' 20' 40'



Typical Swale Section C 0 10' 20' 40'



Typical Swale Section D 0 10' 20' 40'



Specific Information Signs (SIS)



**Program to Direct Motorists to Services
up to 5 Miles from Highways**

Business Categories

- Food
- Gasoline
- Lodging
- Camping
- Attractions

DERSE

Wisconsin Highway Business Signs

Contact Information

800-345-5772

<http://www.wisconsinhighwaybusinesssigns.com>



What's next for the South Section?

- Real Estate Acquisition completed by end of 2013.
- Plans for off alignment grading and structures, WIS 136, CTH W and Gasser Road grading and paving will be bid in November 2014.
- Plans for on-alignment grading and structures and paving will be bid in November 2015.
- Construction to begin in 2015 and end in 2016.

| US 12 SOUTH SECTION SCHEDULE | | | | | | | | | | | | |
|---|----------------------|---|--|----------------------|---|--|----------------------|---|--|----------------------|--|--|
| | 2012-2013 | | | 2014 | | | 2015 | | | 2016 | | |
| PUBLIC INFORMATION | | ★ | | | ★ | | | ★ | | | | |
| REAL ESTATE NEGOTIATION AND ACQUISITION | ████████████████████ | | | | | | | | | | | |
| FINAL DESIGN | ████████████████████ | | | ████████████████████ | | | ████████████████████ | | | | | |
| CONSTRUCTION | | | | | | | ████████████████████ | | | ████████████████████ | | |



Project Contacts

Jeremy Krachey

WisDOT Project Manager
WisDOT SW Region La Crosse
(608) 789-5702

jeremy.krachey@dot.wi.gov

Mike Bakalars

Consultant Project Manager
KL Engineering, Inc.
(608) 663-1218

mbakalars@klengineering.com

Ian Winger

WisDOT Supervisor
WisDOT SW Region La Crosse
(608) 789-5541

oscar.winger@dot.wi.gov

