

# Wisconsin River Bridge USH 12

**Greg Brecka, P.E. - Project Manager**  
**Ruth Coisman, P.E. - Project Leader**

Public Involvement Meeting  
Sauk City Public Library, Sauk City, Wisconsin

**February 27, 2019**



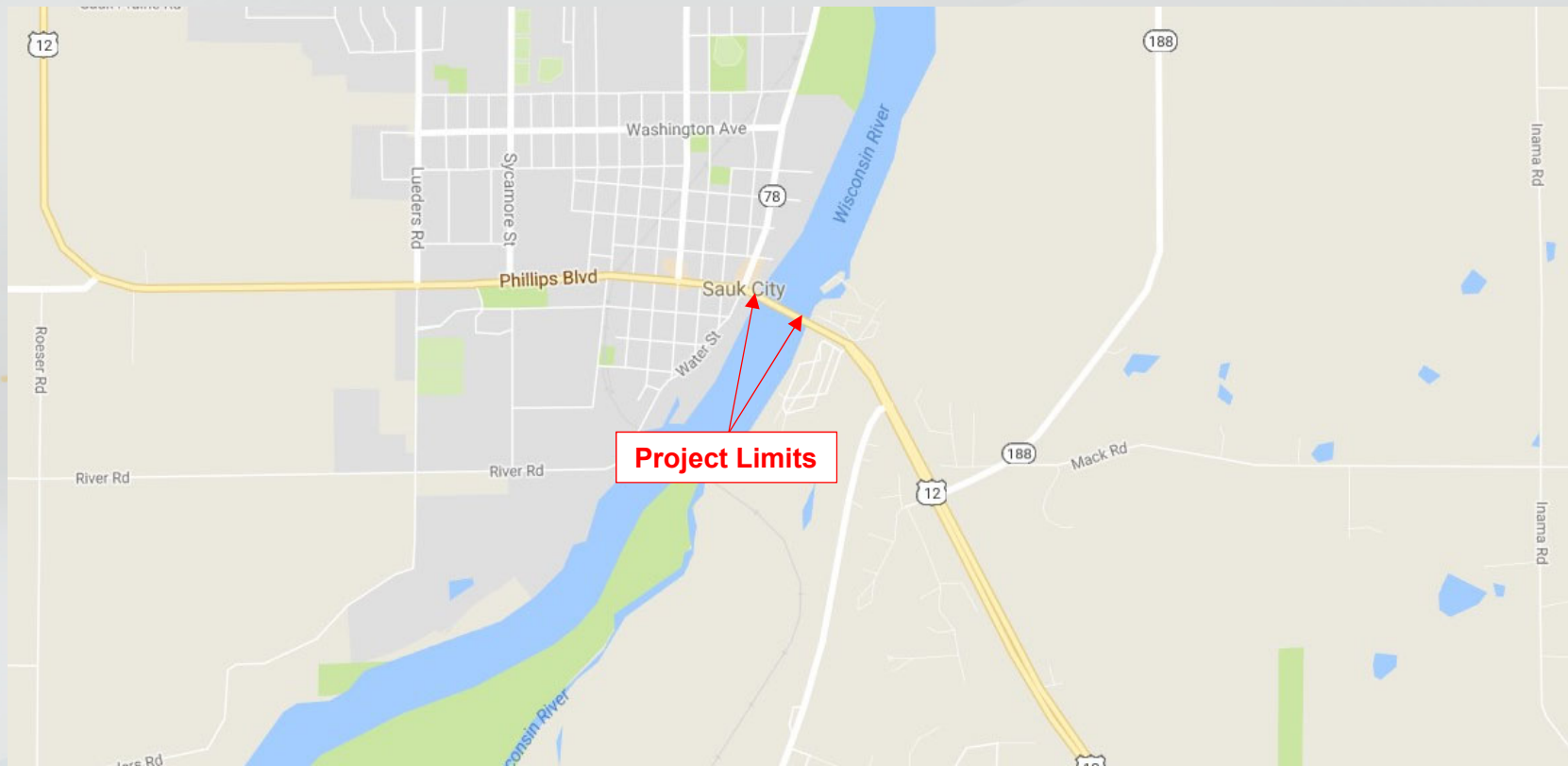
# Wisconsin River Bridge (USH 12) Project Location

## Bridge Rehabilitation



# Wisconsin River Bridge (USH 12) Project Location

## Bridge Rehabilitation



# Wisconsin River Bridge USH 12 Rehabilitation

- Proactive treatments to prolong the lifespan of the existing bridge
  - Bearing Replacement
  - Joint Replacement
  - Repair damaged bridge railing
  - Replace broken roadway approach slab
  - Replace sidewalk at bridge
  - Thin polymer (epoxy) overlay

# Wisconsin River Bridge USH 12

## Project Scope

- Replace Bearings
  - Steel plates at east and west bridge supports
  - Bearings support bridge super structures. Corrosion of bearings can cause harm to the driving surface.





# Wisconsin River Bridge USH 12

## Project Scope

- Replace Bearings -  
Example



# Wisconsin River Bridge USH 12

## Project Scope

- Replace Joints
  - Steel joints at east and west bridge ends
  - Leaking joints cause significant deterioration and damage to bridge components





# Wisconsin River Bridge USH 12

## Project Scope

- Replace Joints -  
Example





# Wisconsin River Bridge USH 12

## Project Scope

- Repair bridge railing
  - NW corner only



# Wisconsin River Bridge USH 12

## Project Scope

- Replace roadway approach slab
  - SE corner only



# Wisconsin River Bridge USH 12

## Project Scope

- Replace roadway approach slab - Example





# Wisconsin River Bridge USH 12

## Project Scope

- Replace sidewalk at bridge
  - East and west sides





# Wisconsin River Bridge USH 12

## Project Scope

- Thin polymer (epoxy) overlay
  - Decks designed for a 75 years life expectancy last for 40-50 years without preservation actions. Appropriate corrective actions taken as part of deck preservation extend the life significantly.

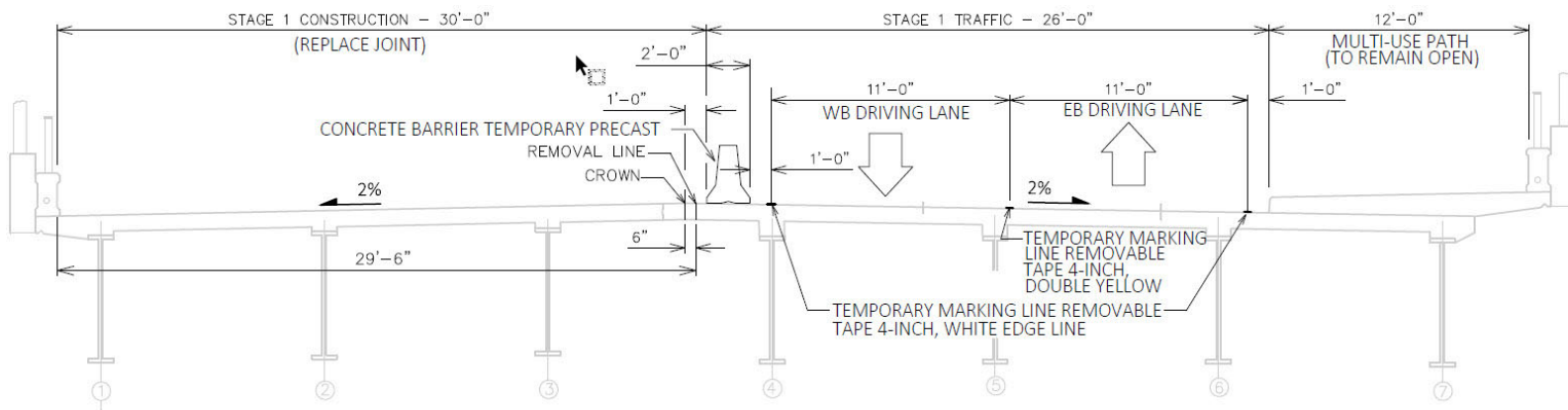
# Construction Schedule and Staging

## Stage 1 (September 2019)

- Work Activities: Joint & bearing replacement WB lanes
  - Single lane closures from Water Street – Adams Drive

# Construction Schedule and Staging

## Stage 1 (September 2019)



TYPICAL STAGING SECTION AT BRIDGE  
(STAGE 1 LOOKING EAST)

# Construction Schedule and Staging

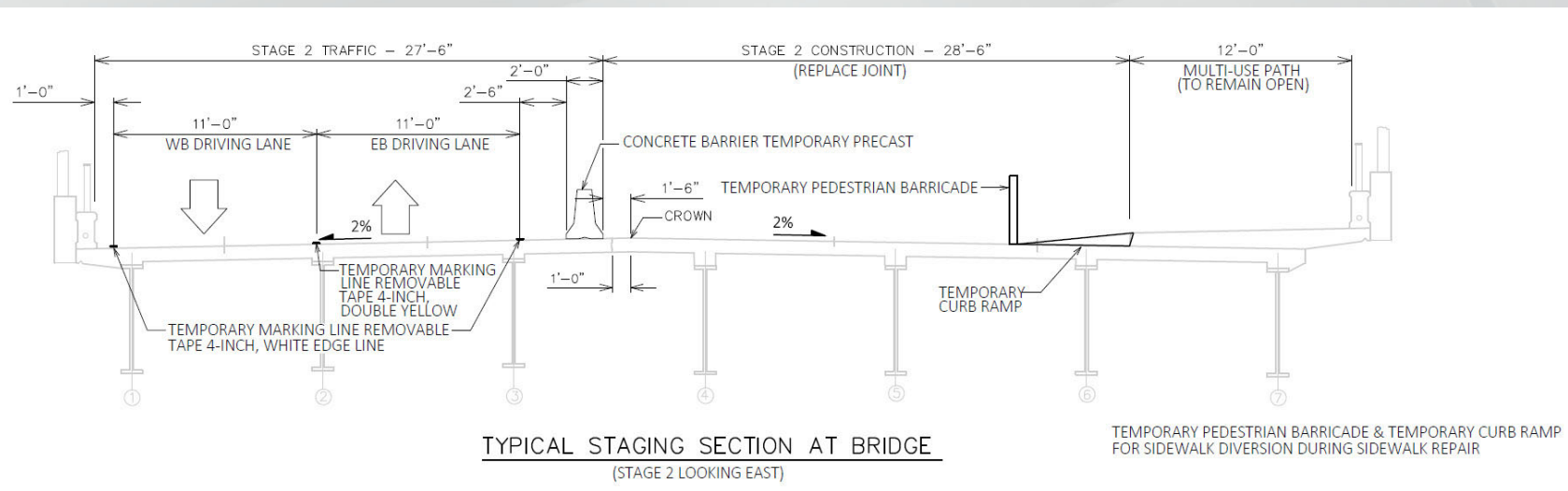
## Stage 2 (October 2019)

- Work Activities: Joint & bearing replacement EB lanes, replace sidewalk and roadway approach slab
  - Single lane closures from Water Street – Adams Drive



# Construction Schedule and Staging

## Stage 2 (October 2019)



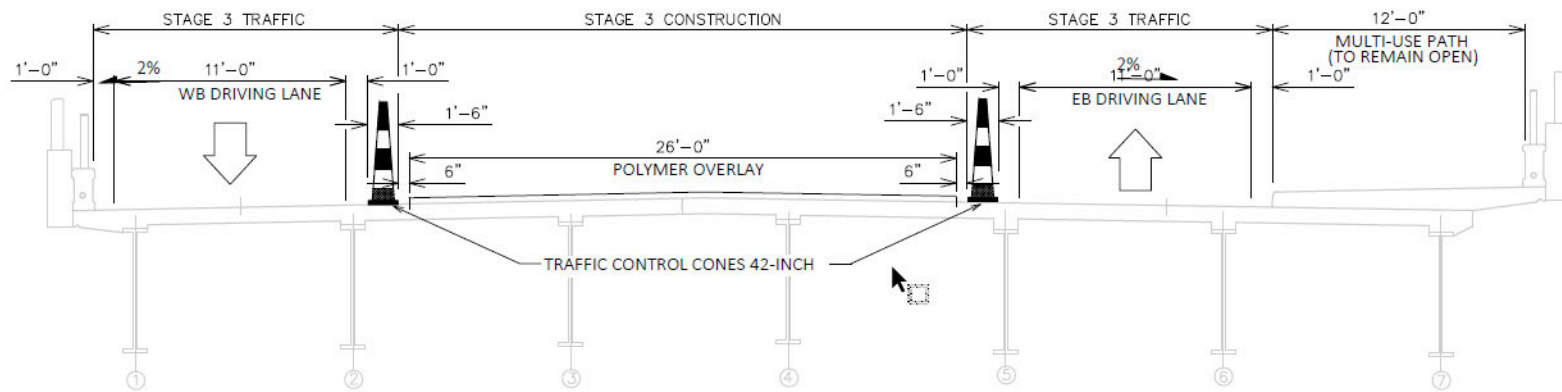
# Construction Schedule and Staging

## Stage 3 (Spring 2020)

- Work Activities: Thin polymer (epoxy) overlay inside lanes
  - Single lane closures from Water Street – Adams Drive

# Construction Schedule and Staging

## Stage 3 (Spring 2020)



TYPICAL STAGING SECTION AT BRIDGE  
(STAGE 3 LOOKING EAST)

# Construction Schedule and Staging

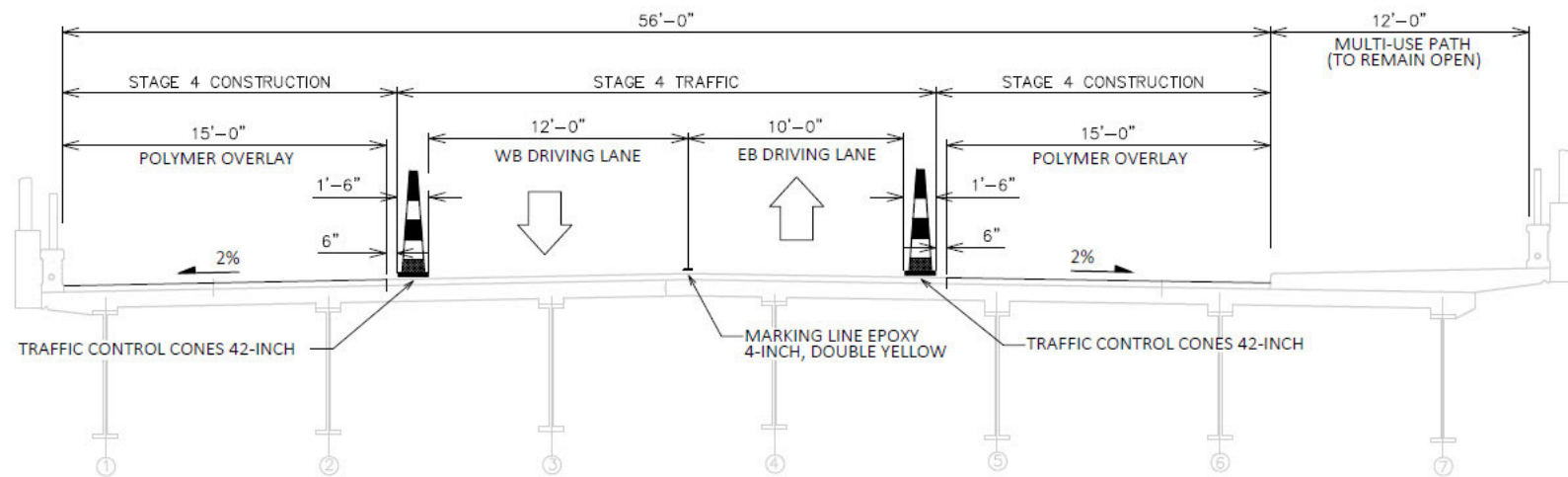
## Stage 4 (Spring 2020)

- Work Activities: Thin polymer (epoxy) overlay outside lanes and shoulders
  - Single lane closures from Water Street – Adams Drive



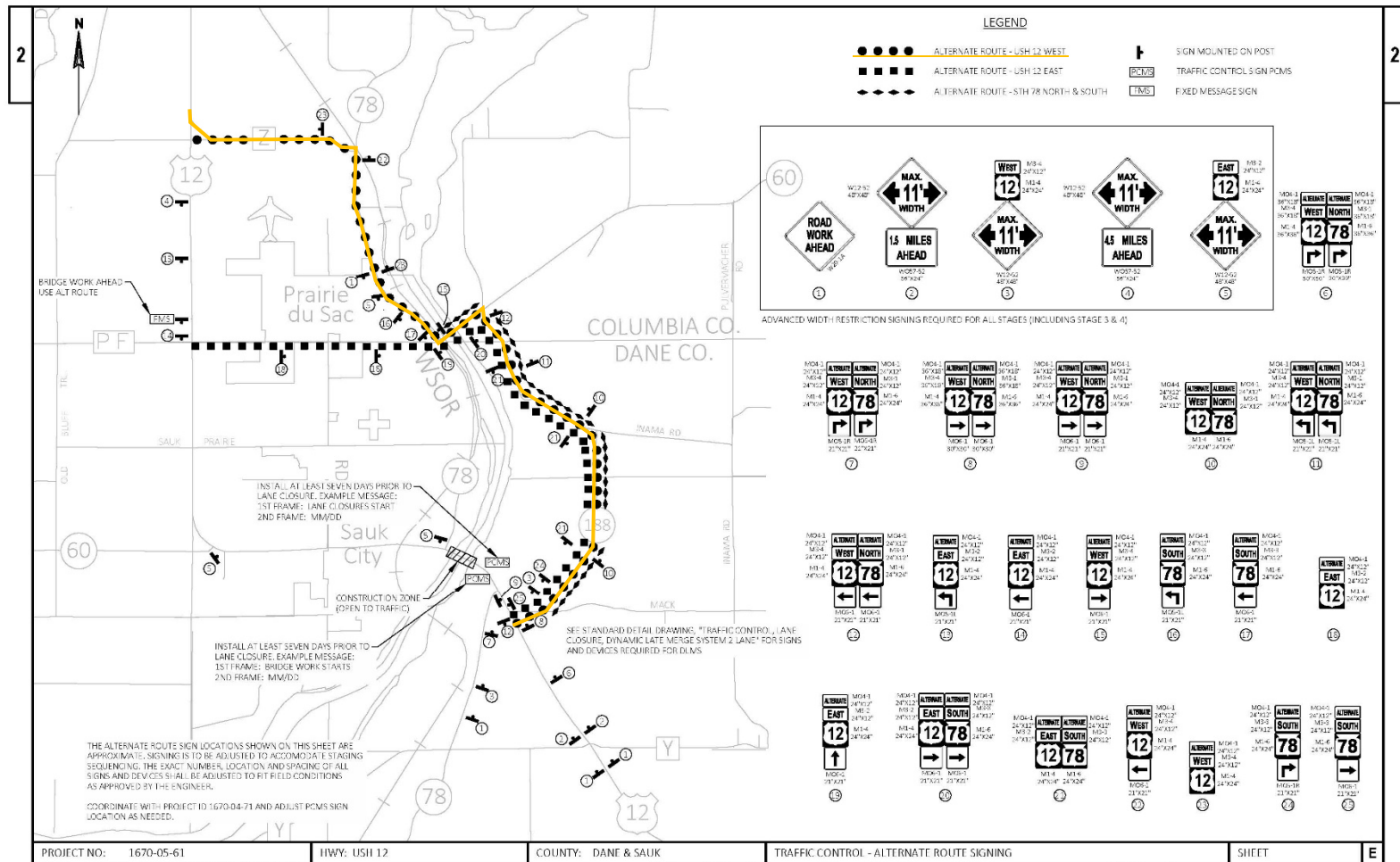
# Construction Schedule and Staging

## Stage 4 (Spring 2020)

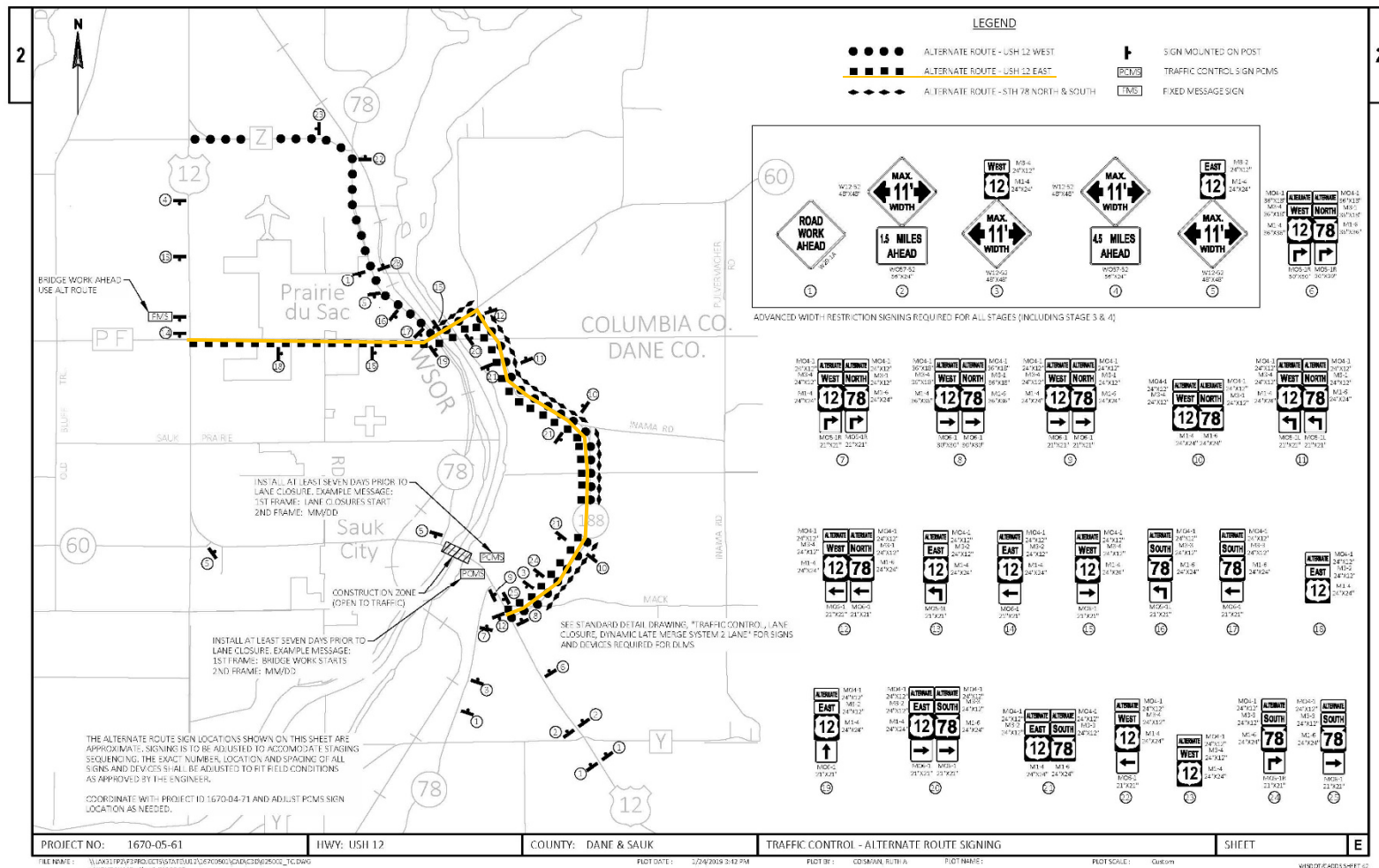


TYPICAL STAGING SECTION AT BRIDGE  
(STAGE 4 LOOKING EAST)

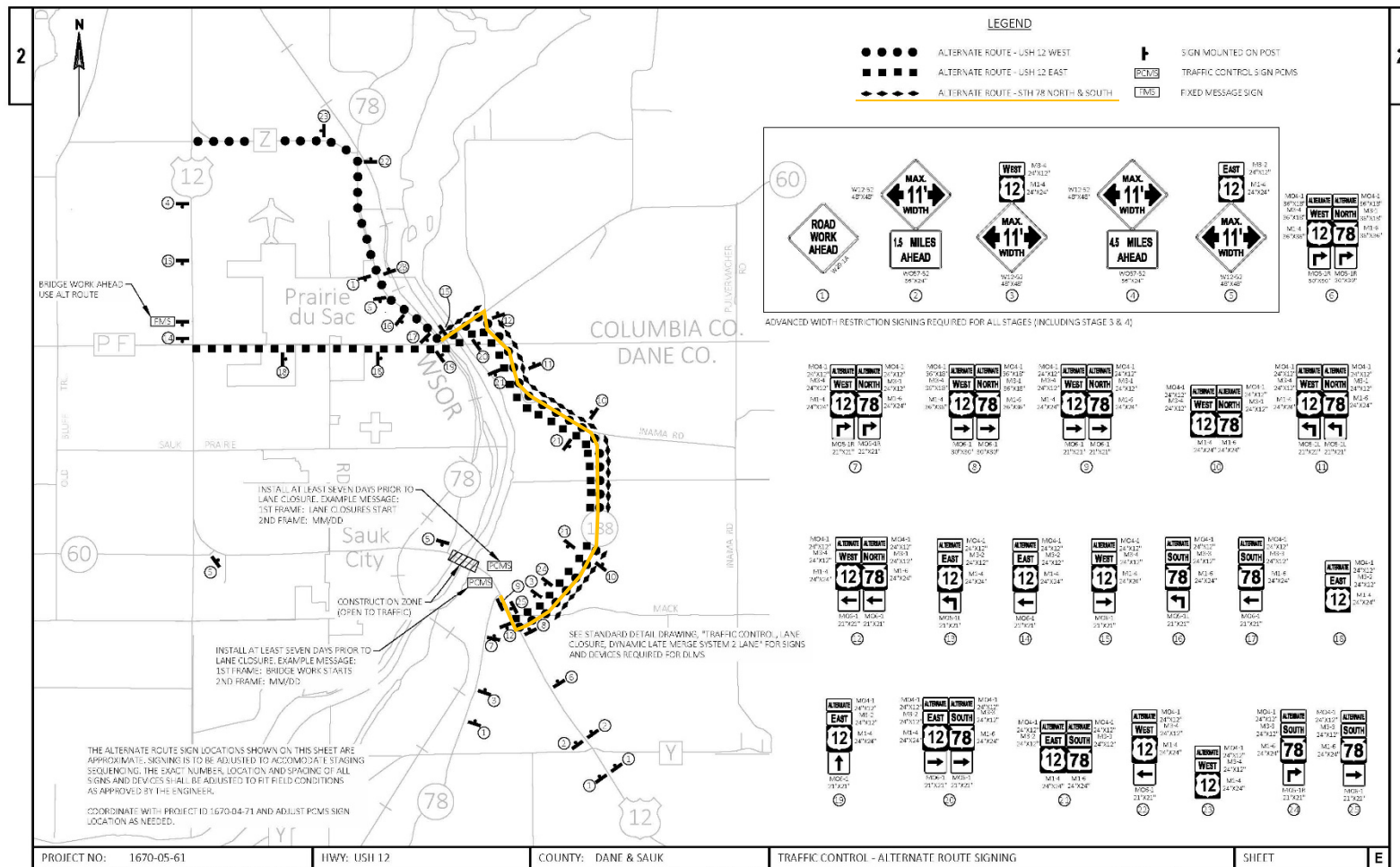
# Alternate Route – USH 12 WB



## Alternate Route – USH 12 EB



# Alternate Route – STH 78



FILE NAME : \\LAX31FP2\F3\PROJECTS\STATE\UI2\267C0502\CAD\3D\025002\_TC.DWG  
LAYOUT NAME : Lwg 1 38110031

G

FLOT 0

PLOT OF : COISMAN, RUTH A PLOT NAME :

--	--

5 SHEET 42

FILE NAME : \\LAX31FP2\F3\PROJECTS\STATE\UI2\26705002\CAD\3D\025002\_TC.DWG  
LAYOUT NAME : Lwg 1 3810003

FILED DATE: 2/24/2019 3:42 PM

FLOT 06 : COISMAN, RUTH

PLOT SCALE: Custom

VHS007/CADD5 SHEET 62



# Project Contacts

## **Ruth Coisman**

WisDOT Project Leader

SW Region Madison

(608) 246-3865

[ruth.coisman@dot.wi.gov](mailto:ruth.coisman@dot.wi.gov)

## **Greg Brecka**

WisDOT Project Manager

SW Region Madison

(608) 245-2671

[gregory.brecka@dot.wi.gov](mailto:gregory.brecka@dot.wi.gov)

## **Brenda Schoenfeld**

WisDOT Supervisor

SW Region Madison

(608) 246-5406

[brenda.schoenfeld@dot.wi.gov](mailto:brenda.schoenfeld@dot.wi.gov)

