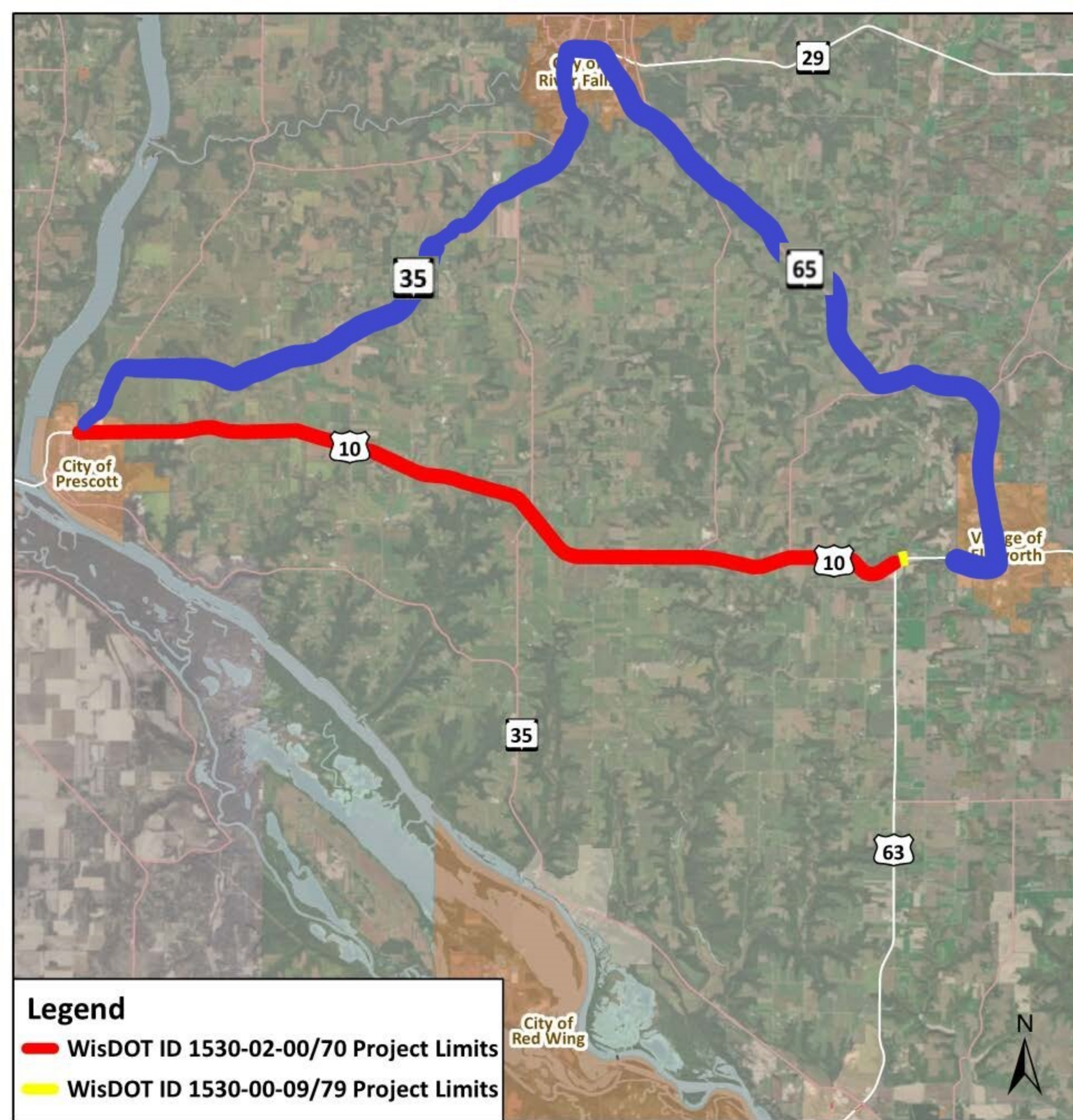


Project Location

WisDOT ID: 1530-02-00/70
Prescott- Ellsworth
(STH 29 to USH 63)
USH 10
Pierce County

WisDOT ID: 1530-00-09/79
Prescott to Ellsworth
Spring Creek Culverts C-47-32 & C-47-33
USH 10
Pierce County



Legend
● WisDOT ID 1530-02-00/70 Project Limits
● WisDOT ID 1530-00-09/79 Project Limits