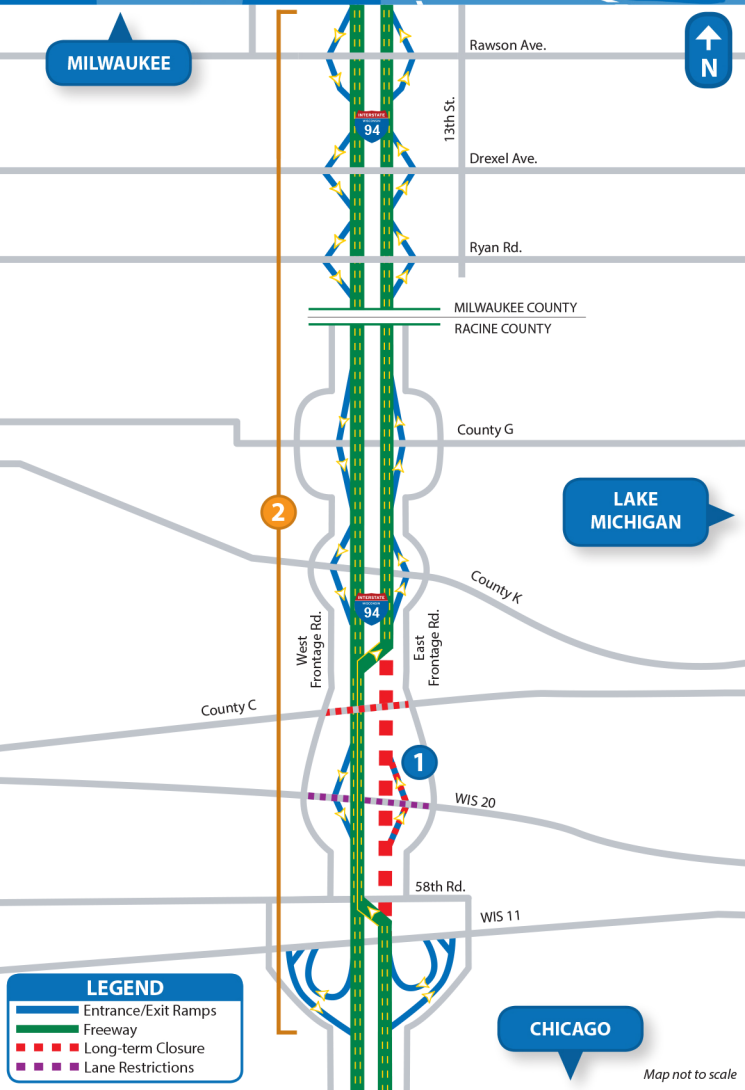


2014 Construction Events for MILWAUKEE & RACINE COUNTIES




1 WIS 20 Interchange

The northbound lanes of I-94, the I-94 West (NB) exit and entrance ramps at WIS 20 and the County C bridge over I-94 will all be reconstructed between spring and fall 2014. During this time, all traffic will be on the I-94 East (SB) lanes, with two lanes in each direction. The I-94 West (NB) ramps at WIS 20 will be closed from spring to summer 2014. Utilize WIS 11, County K, and the frontage roads to get around the closures. Lane restrictions will be in place throughout the year on WIS 20, but no long-term, full closures are planned.

2 Adjacent Project - I-94 Resurfacing

In 2014, I-94 East (SB) and West (NB) will be resurfaced from the Racine/Kenosha County Line to just north of Rawson Avenue in Milwaukee County. The work will be split into two parts. The Milwaukee portion, from County G to just north of Rawson Avenue, will include overnight single and double lane closures. The Racine portion, from the County Line to County G, will include daytime single lane closures and overnight double lane closures. Overnight ramp closures can be expected throughout the project. For more information on this project please contact Brian DeNeve at (262) 548-8759.

 511 provides free real-time travel conditions. Create personalized travel profiles to receive travel time and alert information. 511: Traveler information at your fingertips! 511wi.gov

 Find us on **Facebook** - Wisconsin Plan 94
Find us on **Twitter** - @WisconsinPlan94