

WIS 20 Resurfacing Project Update

As part of Wisconsin Department of Transportation's (WisDOT) WIS 20 Resurfacing Project, the following upcoming work and closures have been scheduled:

Crews are working to complete concrete paving operations and will require scheduled ramp closures.

All closures are weather dependent and subject to change.

Friday and Saturday, March 23-24, 2018:

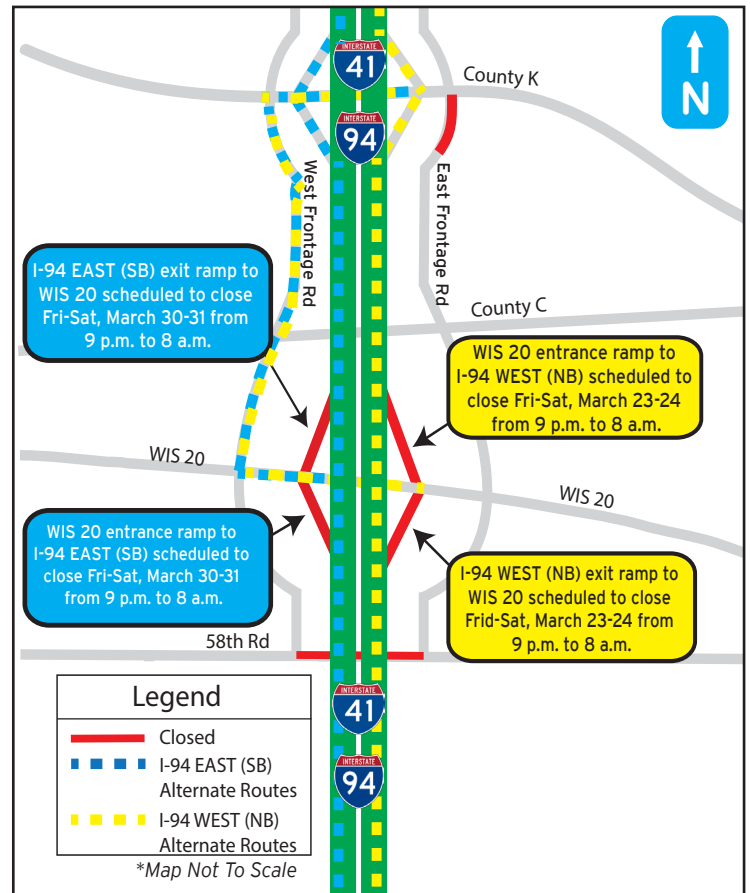
- I-94 WEST (NB) exit ramp to WIS 20 is scheduled to close to traffic Friday, March 23 from 9 p.m. through Saturday, March 24 at 8 a.m.
- WIS 20 entrance ramp to I-94 WEST (NB) is scheduled to close to traffic Friday, March 23 from 9 p.m. through Saturday, March 24 at 8 a.m.

Friday and Saturday, March 30-31, 2018:

- I-94 EAST (SB) exit ramp to WIS 20 is scheduled to close to traffic Friday, March 30 from 9 p.m. through Saturday, March 31 at 8 a.m.
- WIS 20 entrance ramp to I-94 EAST (SB) is scheduled to close to traffic Friday, March 30 from 9 p.m. through Saturday, March 31 at 8 a.m.

Detour:

- Travelers can utilize WIS 20, West Frontage Road, and County K to get around the overnight full ramp closures.



The project team thanks you for your patience and cooperation throughout this project!

Visit the project website at <https://projects.511wi.gov/i94northsouth/> to view the latest project information. You may also contact Cynthia De Vor, Public Involvement Lead to sign-up for email updates at Cynthia@Devorpr.com or by phone at (262) 510-8901.



Find us online at:
projects.511wi.gov



Find us on Facebook at:
Wisconsin Plan 94



Find us on Twitter at:
@WisconsinPlan94