



## I-39/90/94 WISCONSIN RIVER BRIDGE PROJECT

# PROJECT OVERVIEW

The Wisconsin Department of Transportation (WisDOT) is replacing the I-39/90/94 bridges across the Wisconsin River in Columbia County, with project completion scheduled in 2028.

### PROJECT LIMITS:

This project begins approximately one mile north of County U and continues approximately one mile south of County V. The length of this project is approximately 3 miles.

### PURPOSE:

The project is to address the needs of the aging I-39/90/94 structures and maintain vehicular traffic across the Wisconsin River Bridges.

### PROJECT CONCEPT:

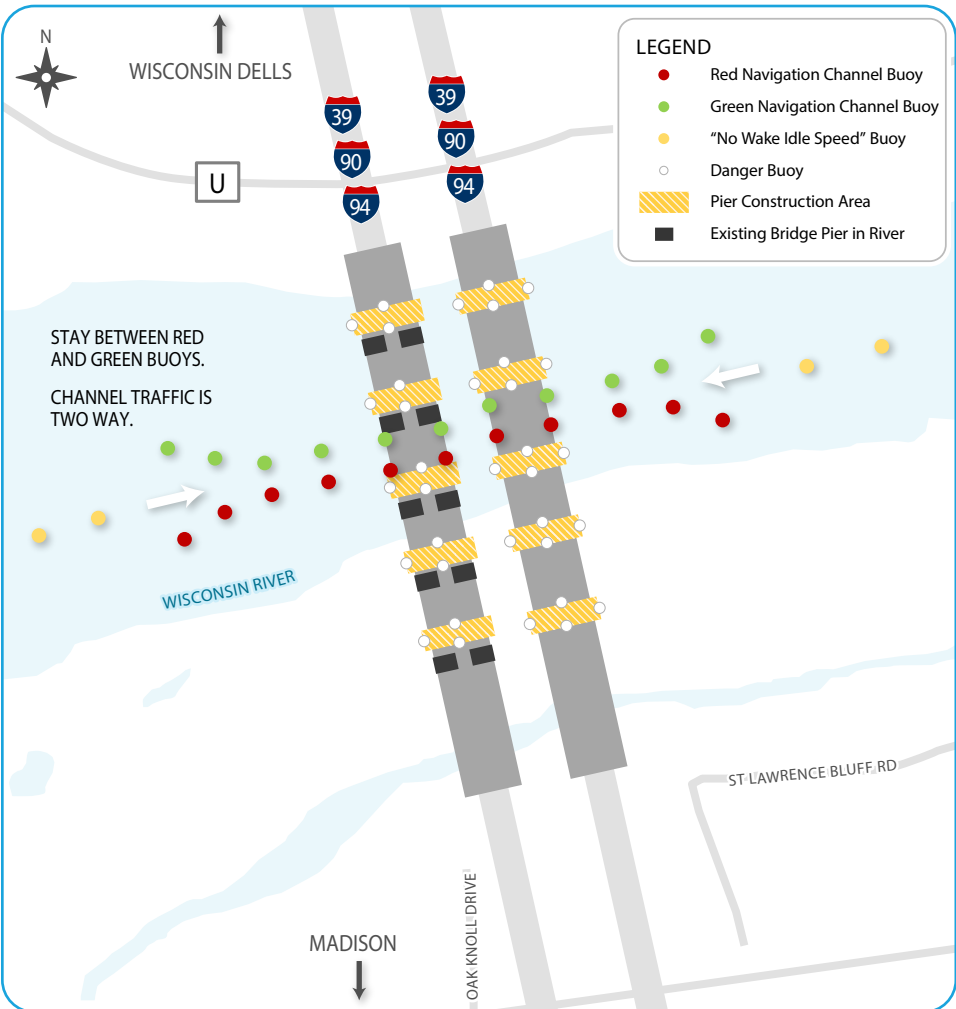
Replacement of the existing I-39/90/94 bridges over the Wisconsin River. Reconstruction of approximately two miles of I-39/90/94 to accommodate the new bridge locations. Replacement of County U and County V bridges over I-39/90/94. Reconstruction and realignment of approximately 0.5 miles of County U and County V.

### TRAFFIC IMPACTS:

During construction, I-39/90/94 will remain open to three lanes in each direction during peak travel times. Occasional traffic impacts along County V, St. Lawrence Bluff Road, and Oak Knoll Drive.



Above: Project Limits



Above: Boater Navigation Guide

## BOATER AWARENESS

During construction, new piers will be constructed in the river bed to support the new bridge deck.

- Navigational buoys have been placed in the river to guide boaters through the construction zone.
- This area is no wake and boaters are asked to take extra caution when navigating this area.
- Periodically, the buoys will be relocated in the river as construction progresses.
- The diagram to the left shows how to properly navigate this area.

For complete boater safety regulations and tips, visit the WDNR website at: <https://dnr.wisconsin.gov/topic/boat/safety>



TO SIGN UP FOR PROJECT UPDATES  
SCAN THE QR CODE OR VISIT  
[projects.511wi.gov/i399094-bridge](https://projects.511wi.gov/i399094-bridge)

### CONTACT:

Rachel Andreoli  
randreoli@hntb.com  
(414) 758-9386