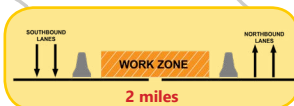
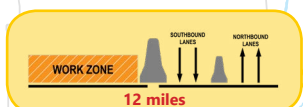
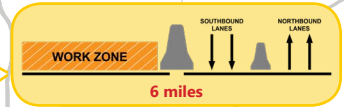


*MAP NOT TO SCALE



How to Use this Map

This interactive map shows the type of lane configurations motorists will encounter on most of I-39/90, between the Illinois state line and Madison, during the 2019 construction season.

CLICK on the interactive lane staging diagrams to view photos of the configuration along that section of the Interstate.

WisDOT has designated alternate routes to facilitate major congestion and incident management on the Interstate. View the [alternate route map](#).

For current project updates and photos, search *Wisconsin I-39/90 Project* on

LEGEND

- Interchange Exit Numbers
- Lane Crossovers
- Rest Area

DANE COUNTY

JEFFERSON COUNTY

ROCK COUNTY

WALWORTH COUNTY

Wisconsin/Illinois State Line