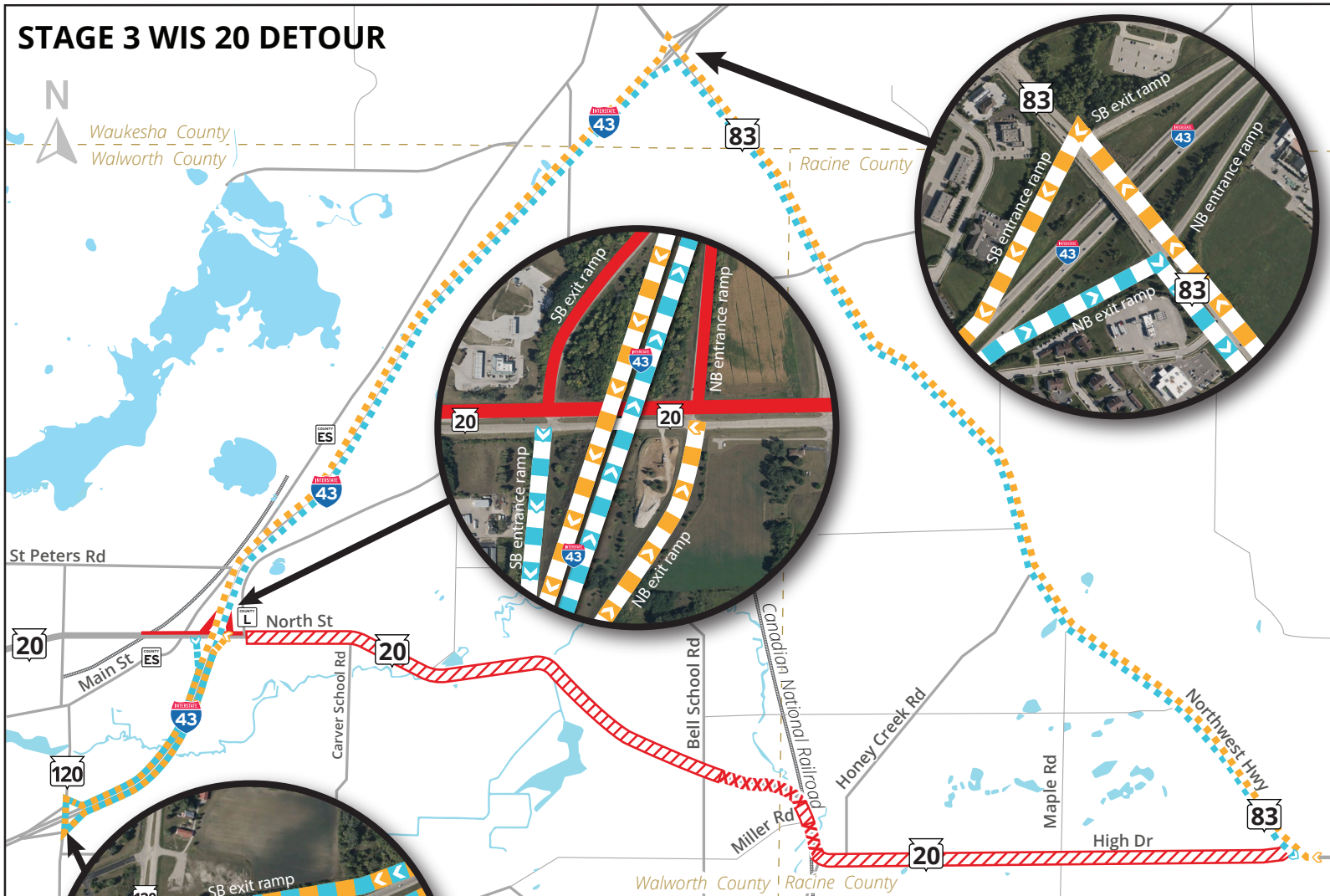


STAGE 3 WIS 20 DETOUR



WIS 20 Eastbound (from East Troy)

Go south on I-43 to the I-43/WIS 120 interchange. Use WIS 120 to go north on I-43 to WIS 83 in Mukwonago. Follow WIS 83 south back to WIS 20.

WIS 20 Westbound (from Waterford)

Follow WIS 83 to I-43. Take I-43 south to the I-43/WIS 120 interchange. Use WIS 120 to go north on I-43 back to WIS 20.

I-43 Southbound Exit Ramp

Continue south on I-43 to WIS 120. Use the I-43/WIS 120 interchange to go north on I-43 back to WIS 20.

I-43 Northbound Entrance Ramp

Take I-43 South to the I-43/WIS 120 interchange. Use WIS 120 to go north on I-43.

LEGEND

- XXXXX Full Closure
- Local Traffic Only
- WIS 20 Eastbound Detour
- WIS 20 Westbound Detour
- Closed

Contact Information: If You have questions or would like more information about this project please contact:

Amy Taetsch—Project Manager
Wisconsin Department of Transportation | Southeast Region
(414) 750-4708 | amy.taetsch@dot.wi.gov

Brad Bowe – Project Engineer
JT-Engineering
(414) 659-1544 | bradb@jt-engineering.com