



TRI-COUNTY EXPANSION



U.S. Department of Transportation
**Federal Highway
Administration**

WIS 441 Tri-County Project

Local Officials Meeting

October 9, 2015

Presentation Outline

- Introductions
- Overview of state budget impacts
- Updated construction schedule and project improvements
- Noise barrier process and results
- Community sensitive solutions
- 2016 construction preview
- Community outreach and business resources

Introductions

- WIS 441 Tri-County Project team
 - Will Dorsey, Northeast Region Director
 - Colleen Harris, Northeast Region Deputy Director
 - Tom Buchholz, Project Development Manager
 - Chad DeGrave, Design Supervisor
 - Scott Ebel, Design Project Manager
 - Kathleen Slattery, Design Project Manager
 - Tammy Rabe, Construction Supervisor
 - Kurt Peters, Construction Project Manager
 - Mark Kantola, Communication Manager

2015/2017 Biennial Budget Act 55

- Act 55 required modification to the Major Highway Development (Majors) and State Highway Rehabilitation (SHR) Programs
 - Majors Program reduced by \$242 million (33%)
 - Funds high-cost rehabilitation and large capacity projects
 - SHR Program reduced by \$83 million (5%)
 - Funds reconstruction, preservation, rehabilitation and safety enhancements

WisDOT Criteria

- WisDOT gave preference to maintaining the original schedule of projects:
 - Address critical safety issues
 - Are in late stages of construction, where delays would cause significant disruption
 - Preserved more heavily used backbone state highway system
 - Priority to restore missing ramp movements at I-41/WIS 441/US10 Interchange

WIS 441 Project

Revised Budget

- Completion of major construction delayed to 2021

Fiscal Year	2016	2017	2018	2019	2020	2021
Feb 2015 - TPC programming by fiscal year (\$ millions)	76	90	85	95	0	0
Sept 2015 - Revised funding without contingent bonding (\$ millions)	61	61	75	62	64	31

Project Schedule

Function	2012	2013	2014	2015	2016	2017	2018	2019	2020	2021
Design										
Real Estate										
Utilities										
Construction										

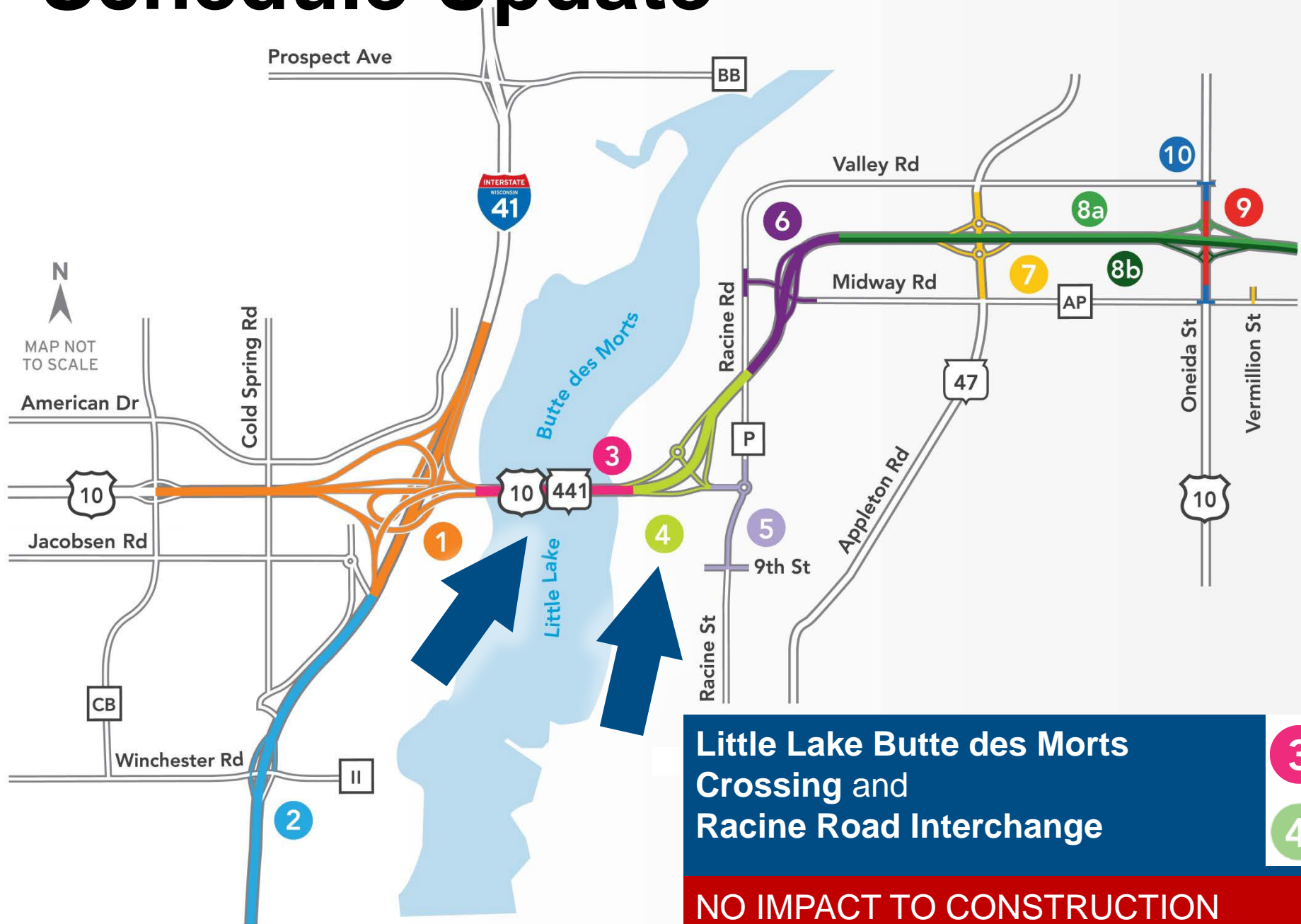
Schedule Update



Schedule Update



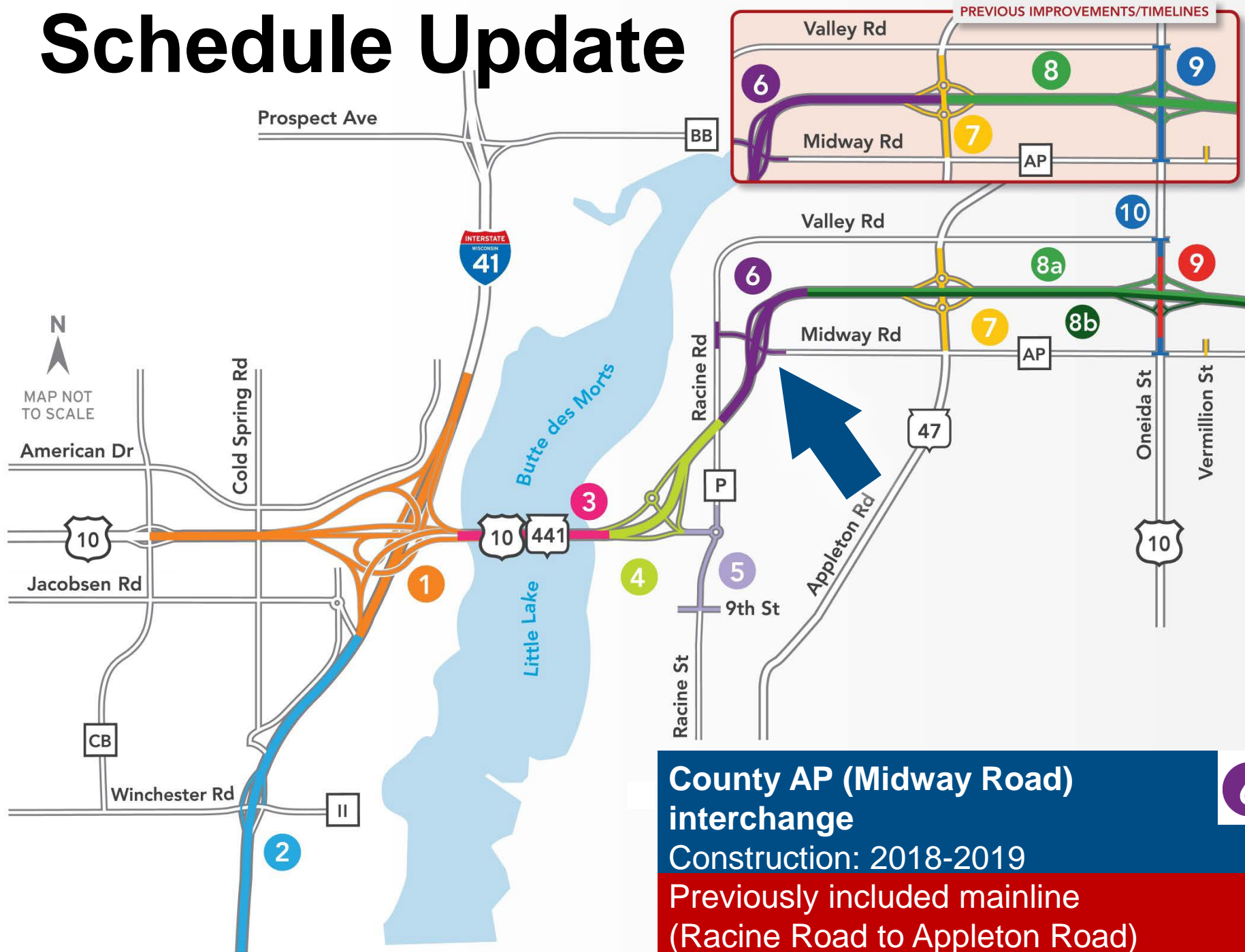
Schedule Update



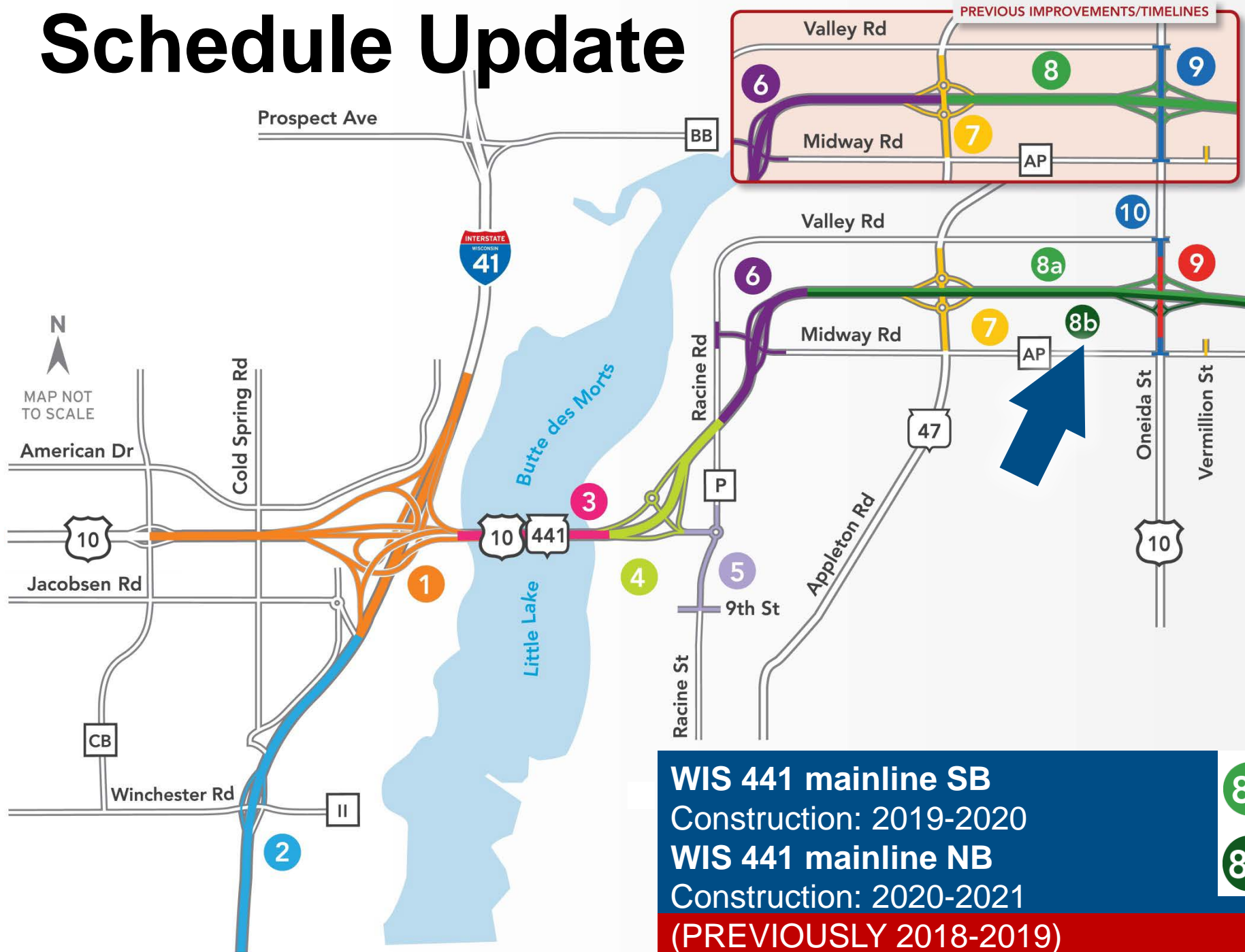
Schedule Update



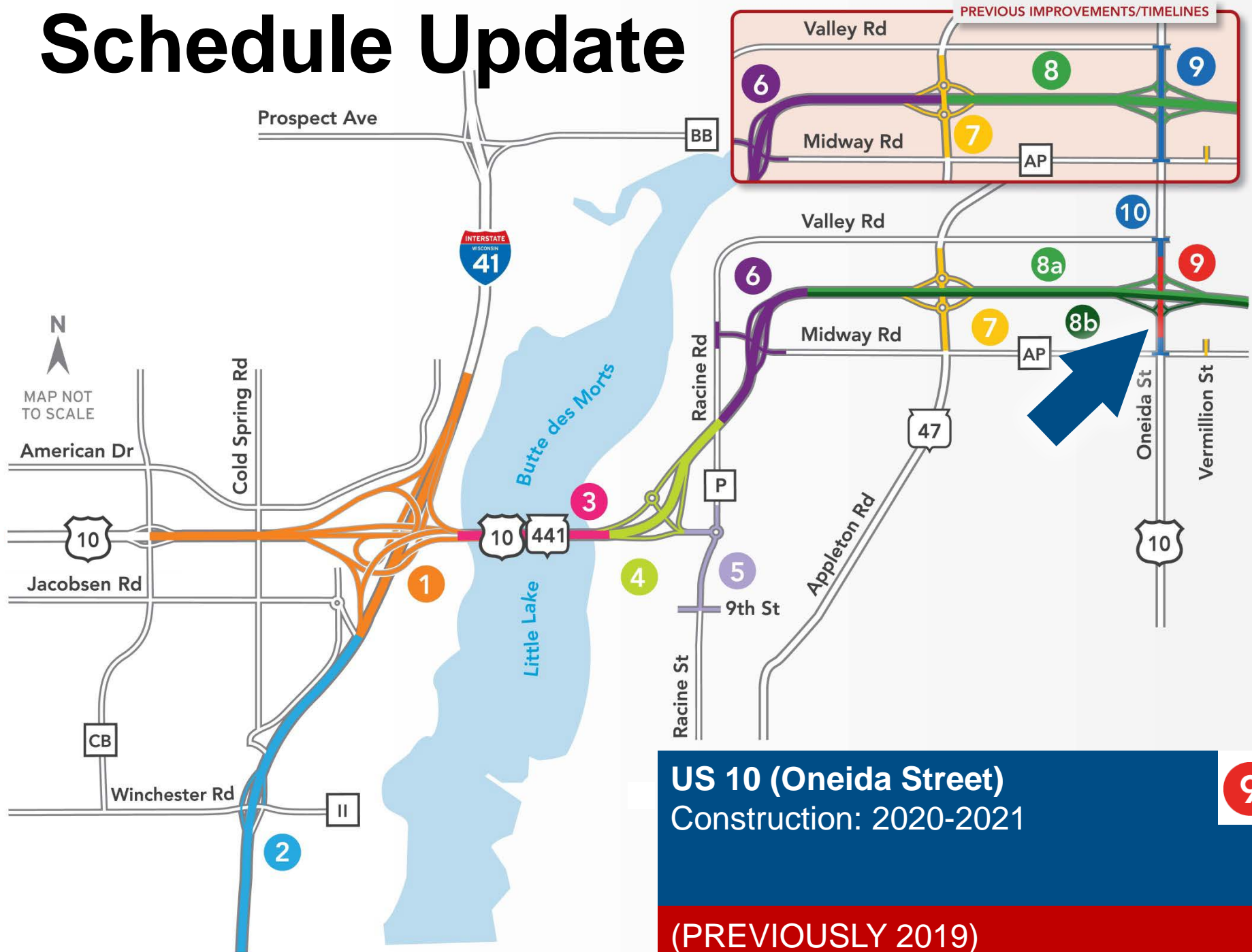
Schedule Update



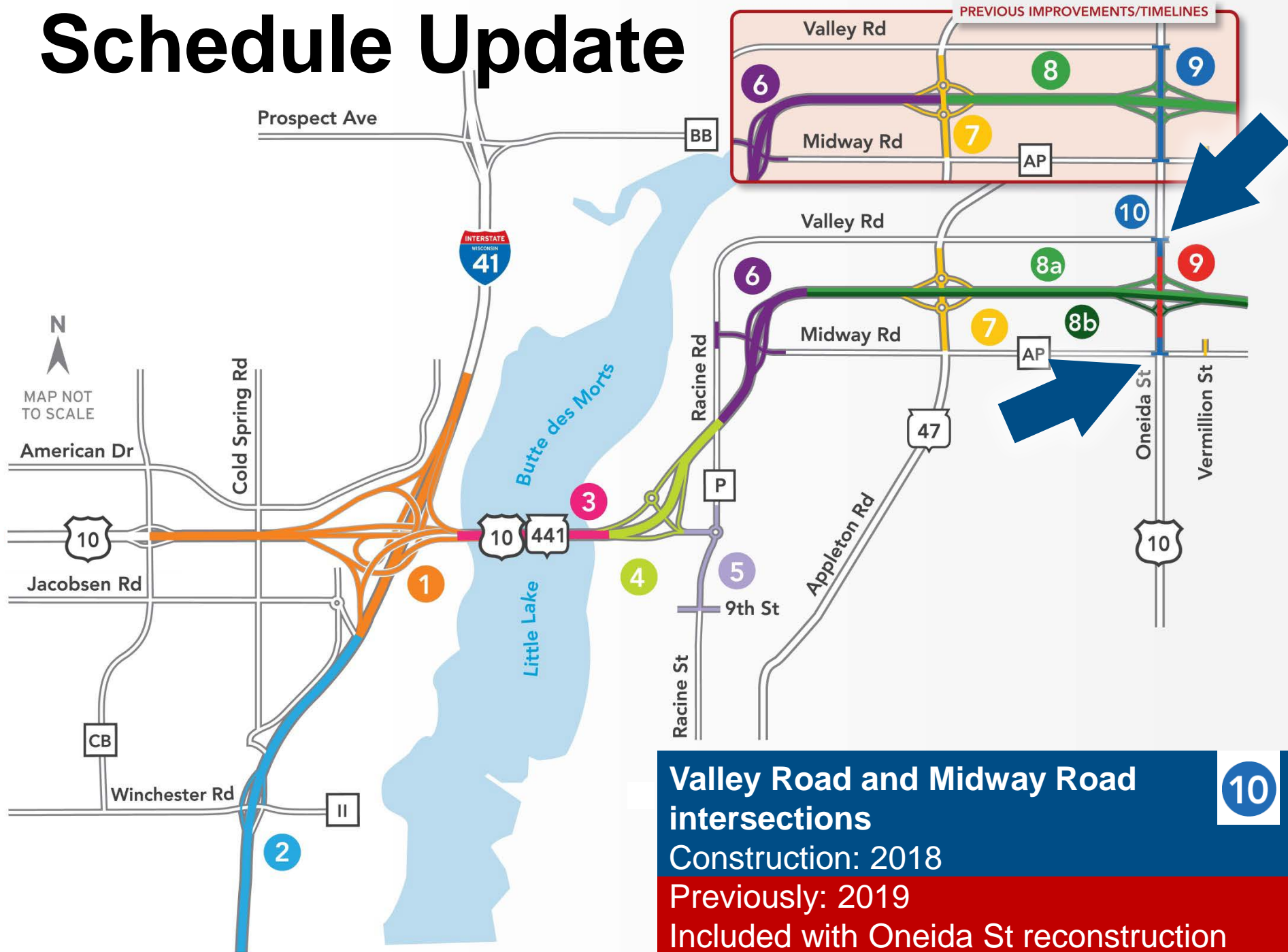
Schedule Update



Schedule Update



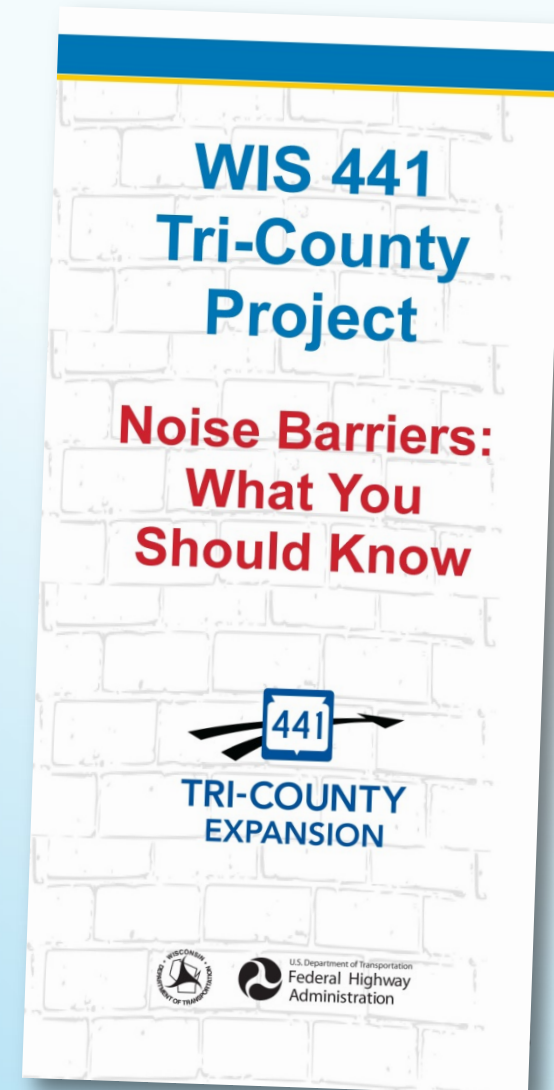
Schedule Update



WIS 441 Noise Barriers

Process and Analysis

- Measured existing noise levels in June 2013
- Modeled and identified properties that approach or exceed threshold
- Designed noise barriers that economically maximize attenuation
- Conducted vote among all benefited receptors (required)
- Barriers will be funded as part of construction



WIS 441 Noise Barriers

Votes tallied:

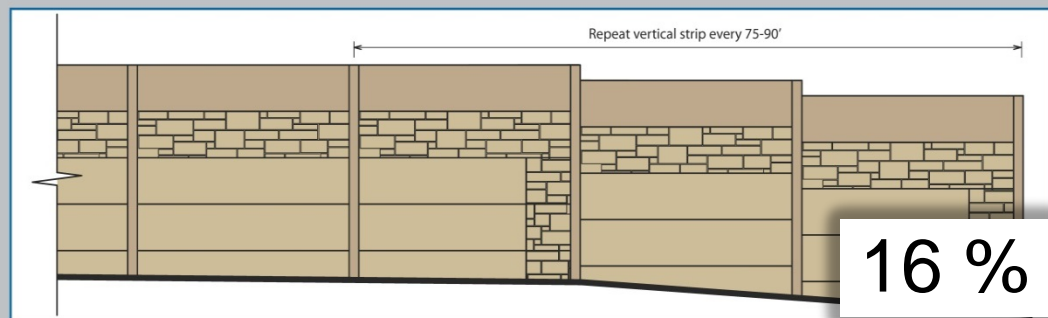
Overwhelming
support for noise
barriers



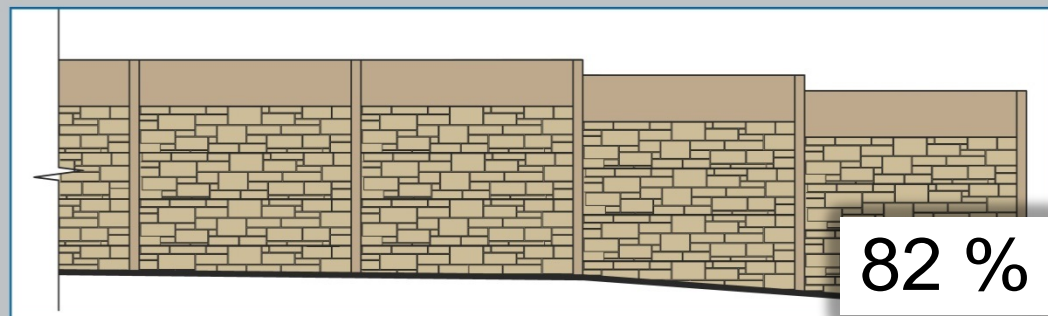
- Public meeting held in May 2015
 - Property owners and renters
 - Within 500 feet in any direction from the proposed noise barrier
- Votes were tallied and residents support all proposed noise barriers
 - The noise barriers will be built as part of the freeway reconstruction

Noise Barrier Treatments

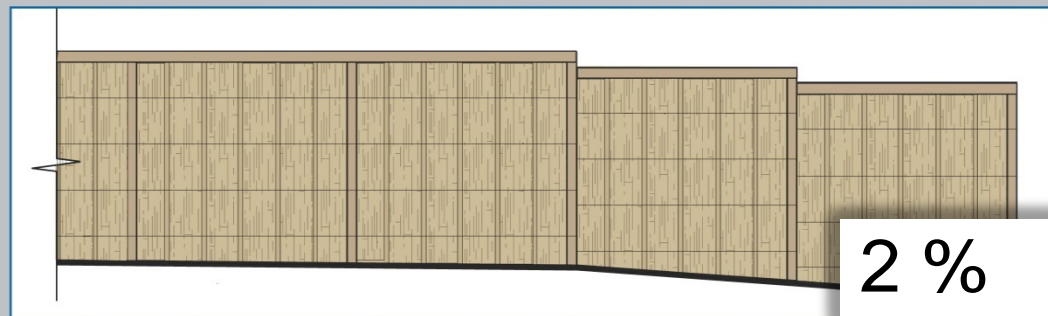
- Residents commented on noise barrier treatment options
 - Residents overwhelmingly prefer Concept B



Ashlar Stone Concept A



Ashlar Stone Concept B



Wood Concept

CSS Process and Recommendations

- Assess project area, develop concepts **(completed)**
- Stone concepts – Communities identify preference **(completed)**
- Color concepts - Communities identify preference **(completed)**
- Focused workshops with community stakeholders
 - Appleton Road (completed)
 - Oneida Street
 - Racine Road (underway)
 - Midway Road

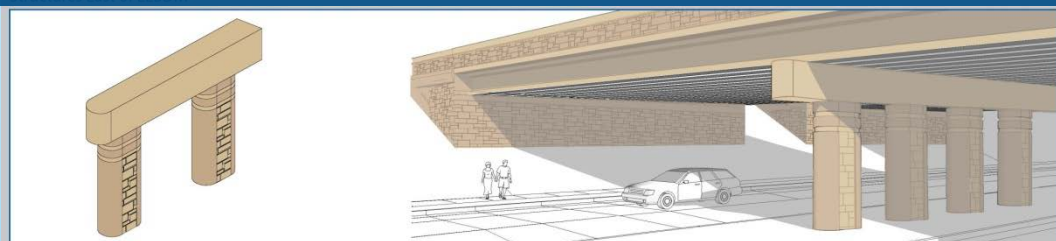
State Budget Update

- Budget eliminated CSS unless municipalities pay
- WisDOT and WIS 441 communities have State/Municipal Agreement
 - CSS along WIS 441 is not impacted and can progress

Junction 10/441 & 41 structures



Structures east of LLBDM



Landscape Plan

CSS Process

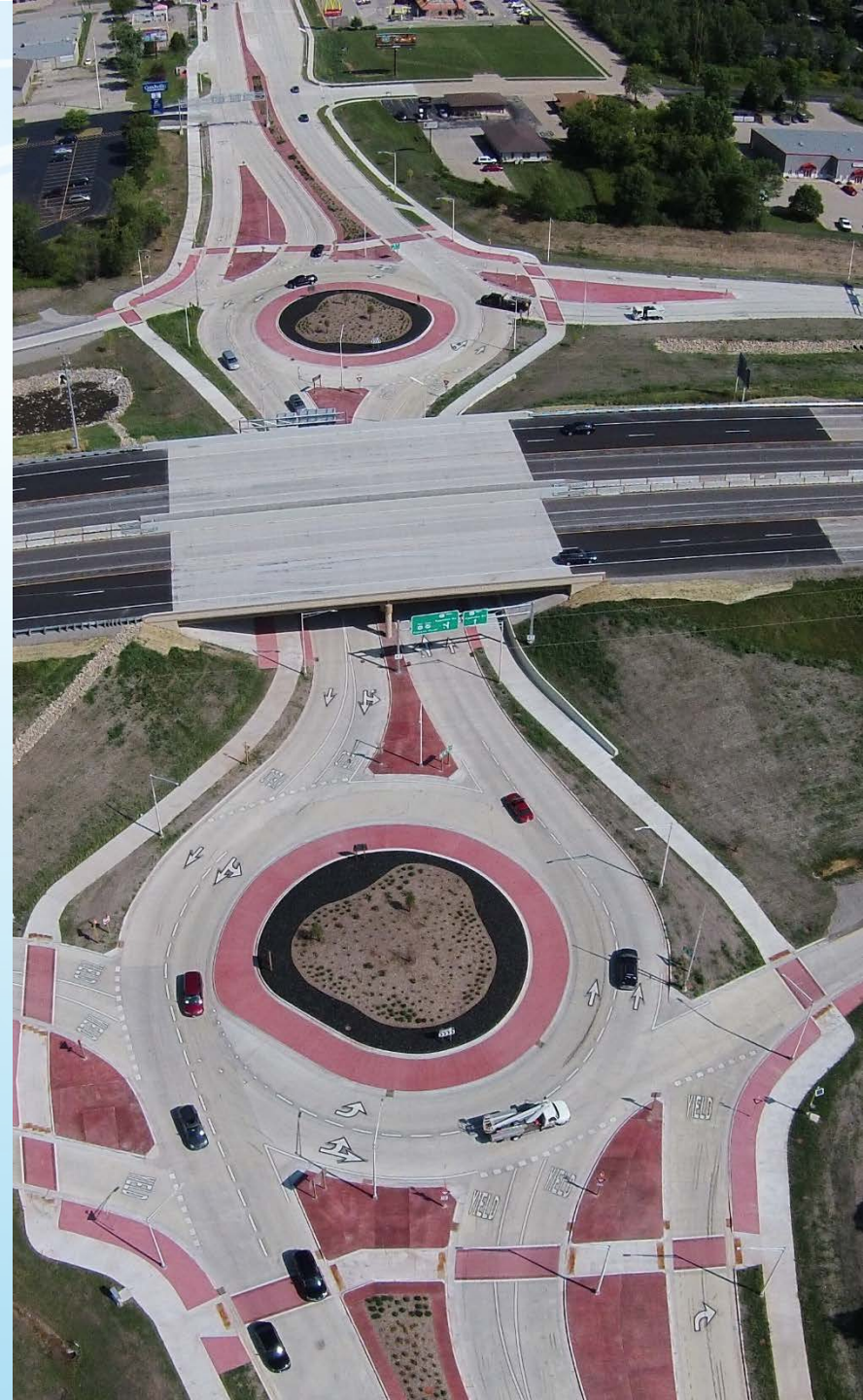
- CSS process is underway
 - Racine Road CSS design
 - Town of Menasha
 - City of Menasha
 - Oneida Street CSS design
 - City of Appleton



WIS 441

Project to date

- 6 projects substantially complete
- 4 projects currently underway
- \$102.8 million: Program \$ paid through Aug '15
 - Design: 80% complete
 - Real estate: 24% complete
 - Construction: 16%



LLBDM Crossing

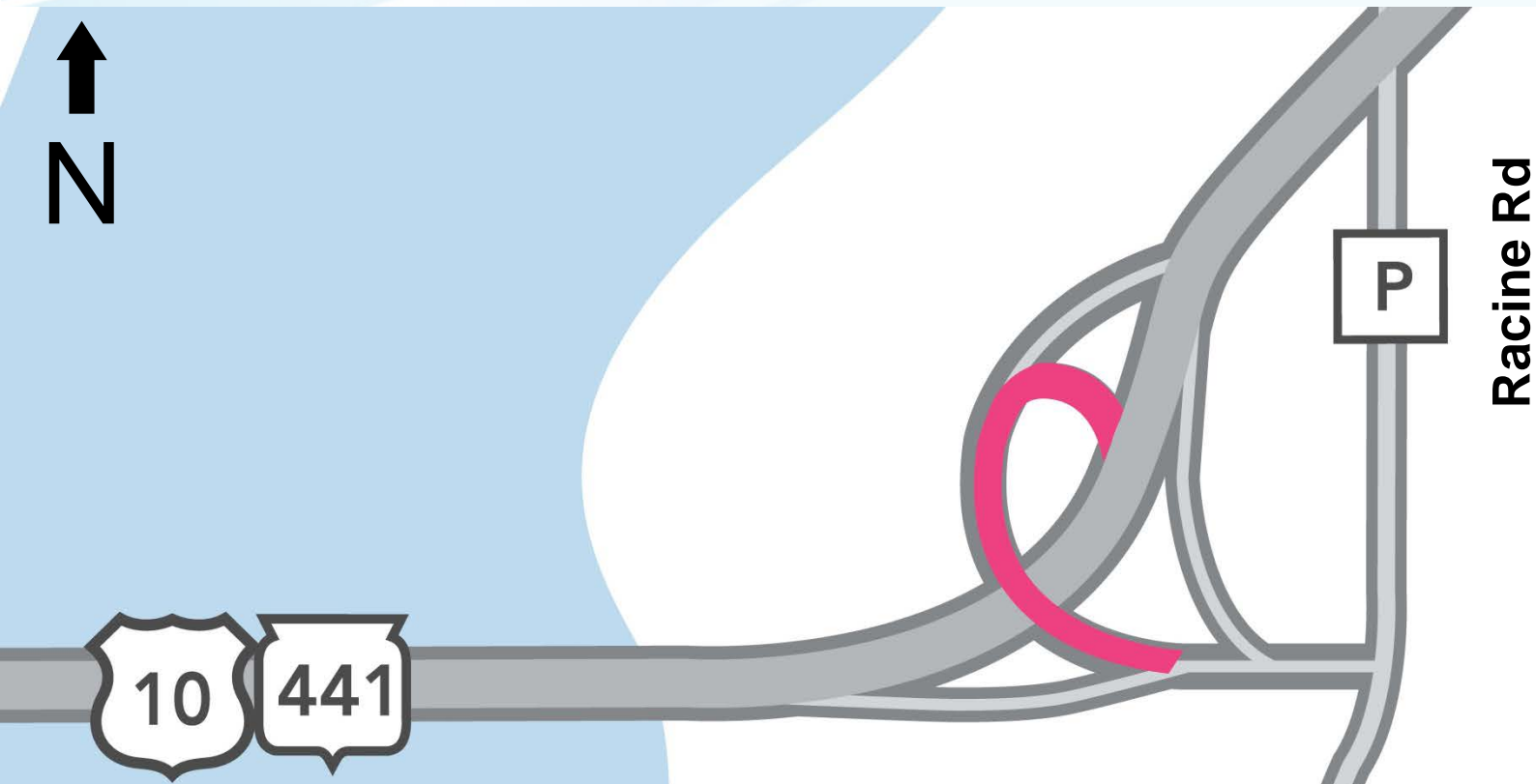
2016 Construction Preview

- Complete new bridge over LLBDM (eastbound)
- Oct 2016:
Shift traffic to new EB bridge
- 2016-2018:
Recondition existing WB bridge



Racine Road

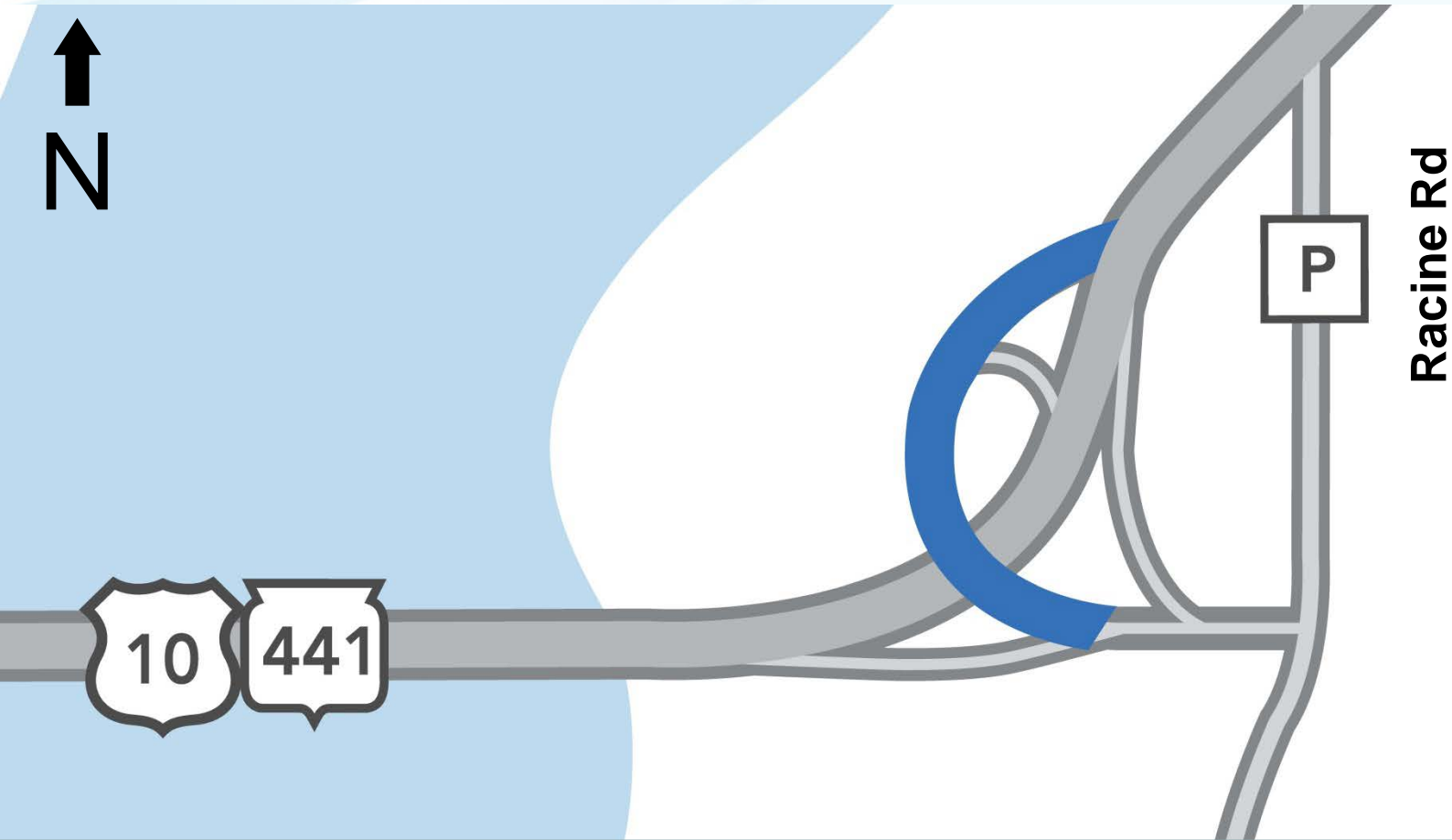
2016 Construction and Closure Preview



- CLOSED June 2015
- New ramp configuration OPENS summer 2018 for traffic traveling to NB I-41 only
- OPENS summer 2019 for all traffic

Racine Road

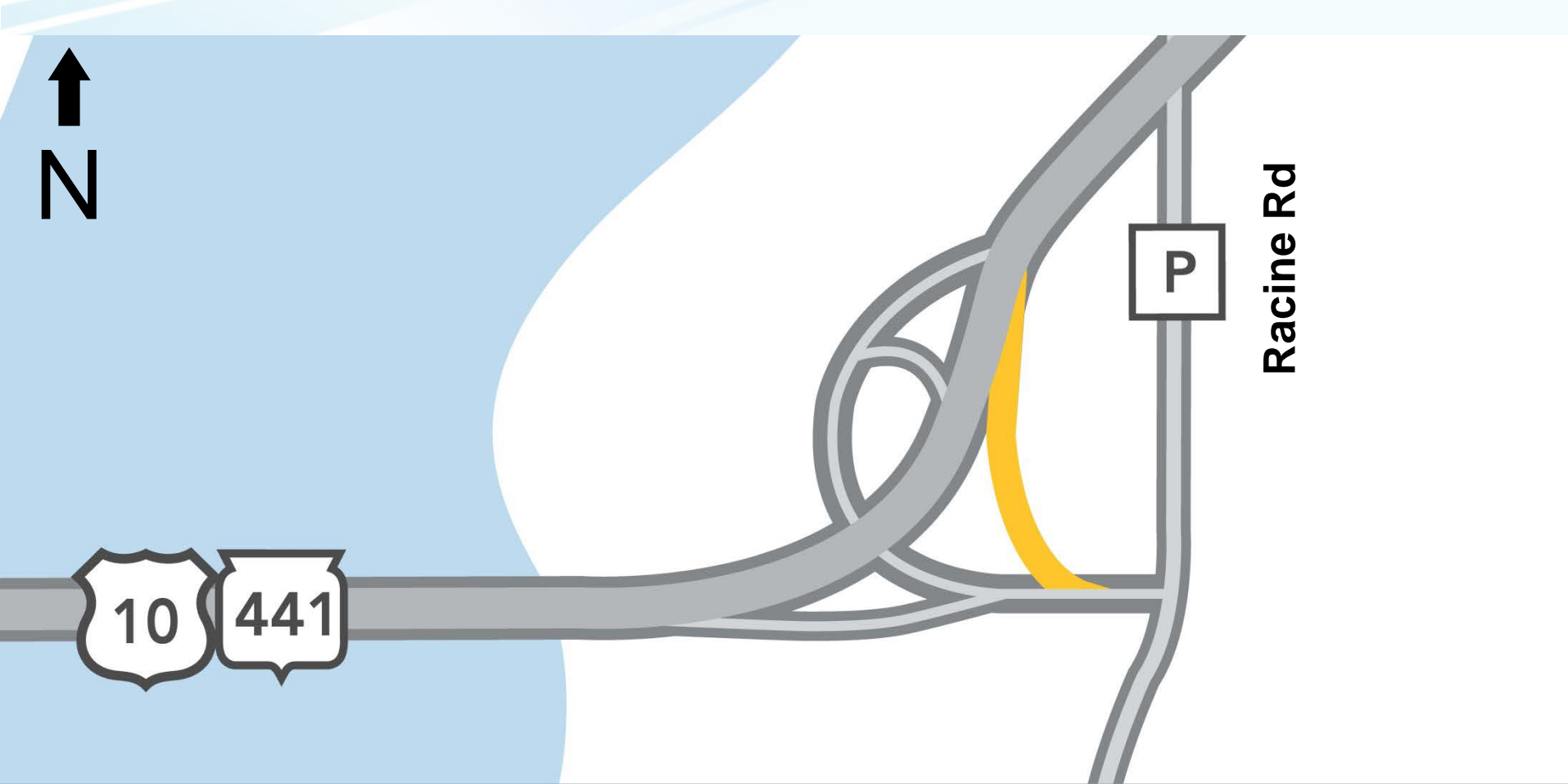
2016 Construction and Closure Preview



- WB US 10/SB WIS 441 exit ramp to Racine Road
CLOSED between June 2015 and fall 2016

Racine Road

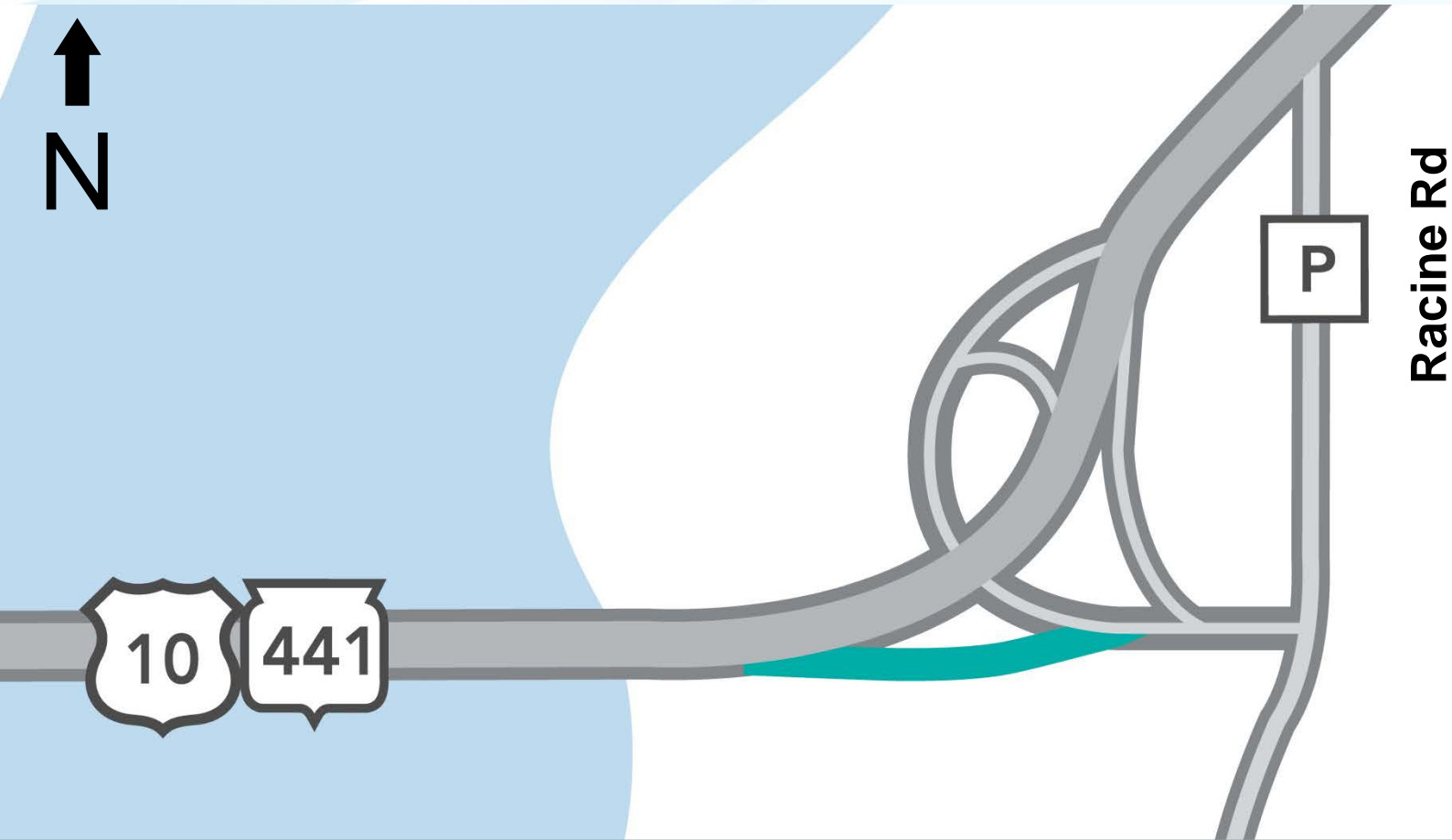
2016 Construction and Closure Preview



- EB US 10/NB WIS 441 entrance ramp from Racine Road CLOSED between August 2015 and fall 2016

Racine Road

2016 Construction and Closure Preview



- 2016: EB US 10/NB WIS 441 exit ramp to Racine Road will CLOSE between spring 2016 and fall 2016

Additional Information



DEPARTMENT OF TRANSPORTATION

Wisconsin 511 Construction Projects

www.projects.511wi.gov/wis441/

[511 Projects Home](#)

[Contact 511 Projects](#)

[Help](#)

[Site Index](#)

[Wisconsin 511](#)

[My 511wi](#)

[Wisconsin DOT](#)

WIS 441 Tri-County Project

Tri-County Expansion



[OVERVIEW](#)

[SCHEDULE](#)

[MAP](#)

[CLOSURES](#)

[NEWS RELEASES](#)

[RESOURCES ▶](#)

[CONTACT](#)

Overview

The Wisconsin Department of Transportation (WisDOT) is developing plans to reconstruct the US 10/WIS 441 freeway. The WIS 441 Tri-County Project will reconstruct and expand US 10/WIS 441 from four to six lanes from Cold Spring Road to about 1/2 mile east of Oneida Street (approximately 6 miles).

FOLLOW US ON SOCIAL MEDIA

[facebook](#)



[FULL OVERVIEW](#)



- Keeping public informed
 - Project web presence
 - Media outreach
 - Newsletters
 - Public meetings
 - Social media
- Feedback

Business Resources

'In this together' kit

- Partnership with businesses and provides tools to assist businesses:
 - Planning ahead and staying informed
 - Handling and reducing traffic
 - Keeping customers informed



[In This Together](#)
[Workbook](#)
[Case studies](#)
[Promotional samples](#)
[Contacts](#)

In This Together - Workbook

This workbook shows how WisDOT and businesses can work together to succeed during a highway construction project.

Sections

- [Planning ahead](#)
- [Staying informed](#)
- [Handling traffic](#)
- [Reducing traffic](#)
- [Keeping customers informed](#)
- [Assistance for motor vehicle dealers](#)
- [Tips](#)

Worksheet

Checklist for business owners/operators showing items businesses could do, prior to and after construction successful.

- [Business checklist/timeline](#) 

<http://www.us41.wisconsin.gov/wis441/business-resources>



I-41 Maintenance Project

- Aug – Nov 15, 2015
- Scope
 - Concrete repair and replacement
 - High friction surface treatment
 - Polymer overlay
- I-41 single and double lane closures, 6 p.m. to 6 a.m., Monday - Friday



Communicating With You

- Comment forms
 - Submit today or via mail
 - Send email to project staff
 - Submit comments by October 23, 2015

[illegible]



Questions?