



# TRI-COUNTY EXPANSION



U.S. Department of Transportation  
Federal Highway  
Administration

# WIS 441 Tri-County Project

## Local Officials Meeting

Dec 19, 2017

# Presentation Outline

- Introductions
- Design and schedule updates
- Construction update
- Other area projects
- Work zone safety
- Community outreach and business resources

# Introductions

- WIS 441 Tri-County Project team
  - Will Dorsey, Northeast Region Director
  - Tom Buchholz, Project Development Manager
  - Chad DeGrave, Design Supervisor
  - Scott Ebel, Design Project Manager
  - Tammy Rabe, Construction Supervisor
  - Kurt Peters, Construction Project Manager
  - Melissa Kok, Northeast Region Assistant Communication Manager

# Project Schedule

Function	2012	2013	2014	2015	2016	2017	2018	2019
Design								
Real Estate								
Utilities								
Construction								

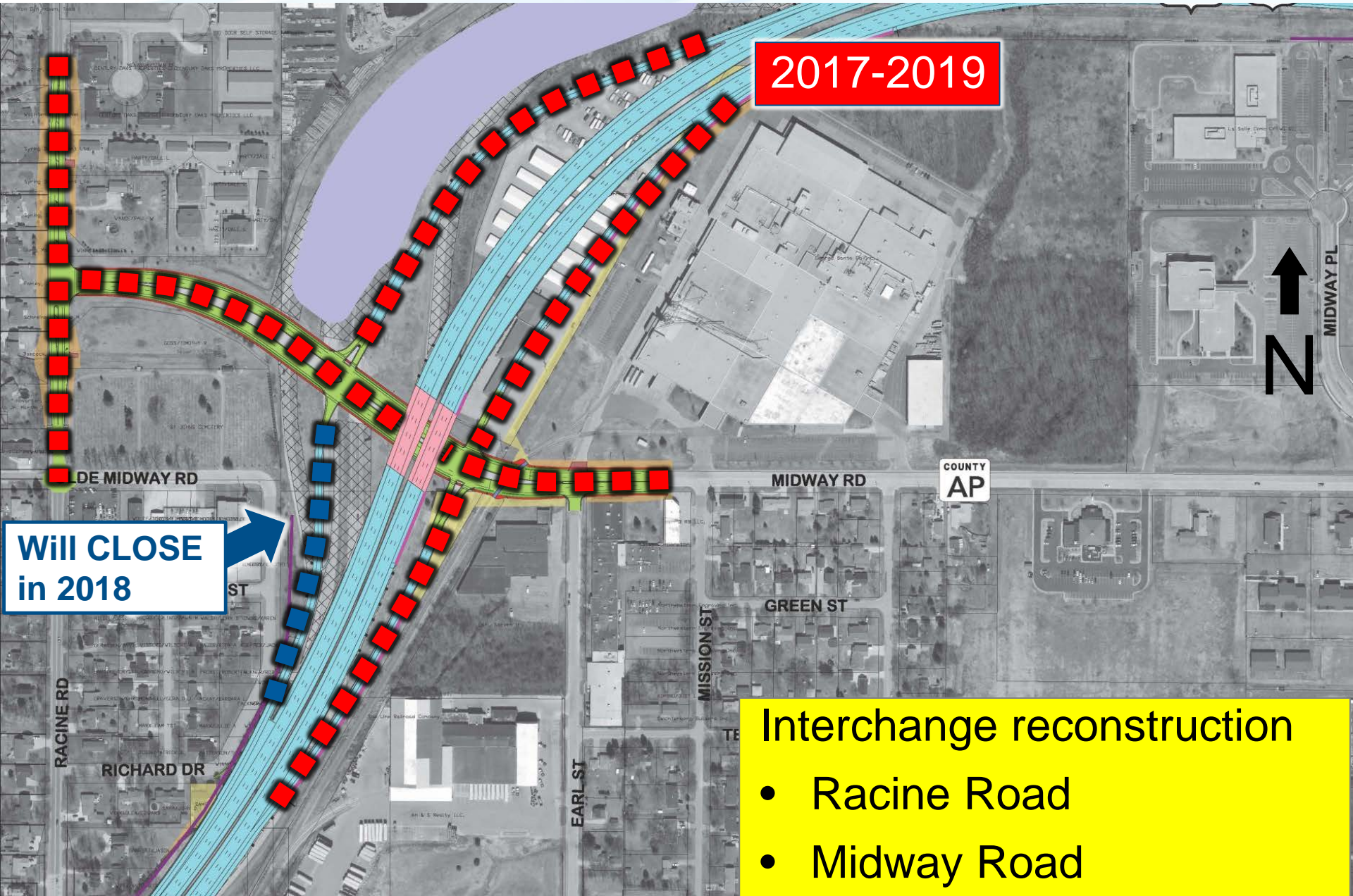
# Design Updates



- 5 interchanges
- 6 miles of mainline
- Second LLBDM bridge
- Intersection reconstruction



# County AP/Midway Rd Interchange



2017-2019

N

COUNTY  
AP

MIDWAY RD

GREEN ST

MISSION ST

EARL ST

RICHARD DR

RACINE RD

ST

Will CLOSE  
in 2018

Interchange reconstruction

- Racine Road
- Midway Road



# US 10/Oneida St Interchange Ramps and WIS 441 Mainline

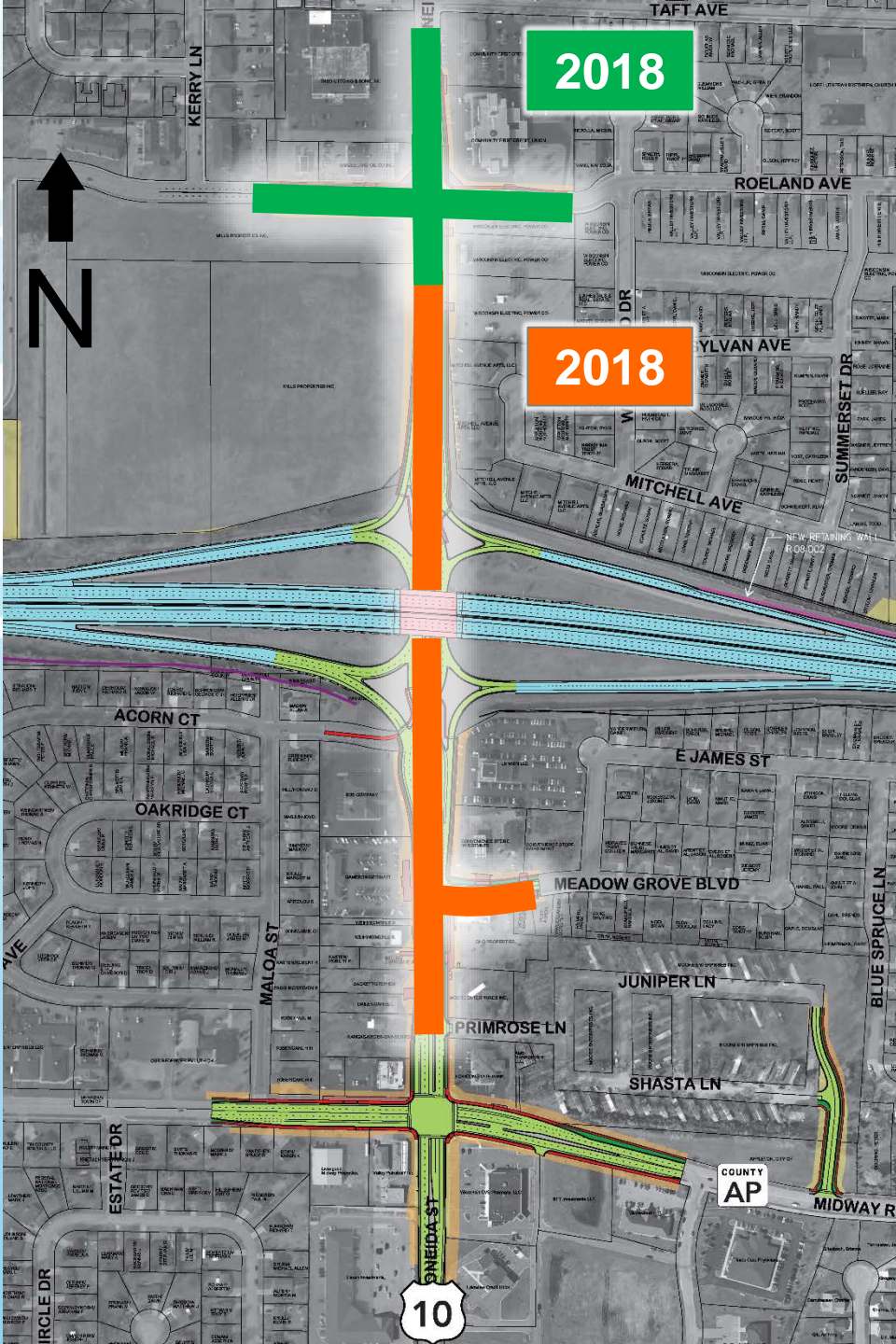
- Reconstruct US 10/Oneida St interchange ramps

- Expand mainline on existing alignment

2018

2019





# US 10/Oneida St Interchange

- Oneida Street
  - Diverging Diamond interchange
  - Reconstruct Oneida St from Valley Rd to Midway Rd
- Oneida St/Valley Rd intersection
  - Improve to handle additional traffic
  - Minimize construction impacts during interchange closure



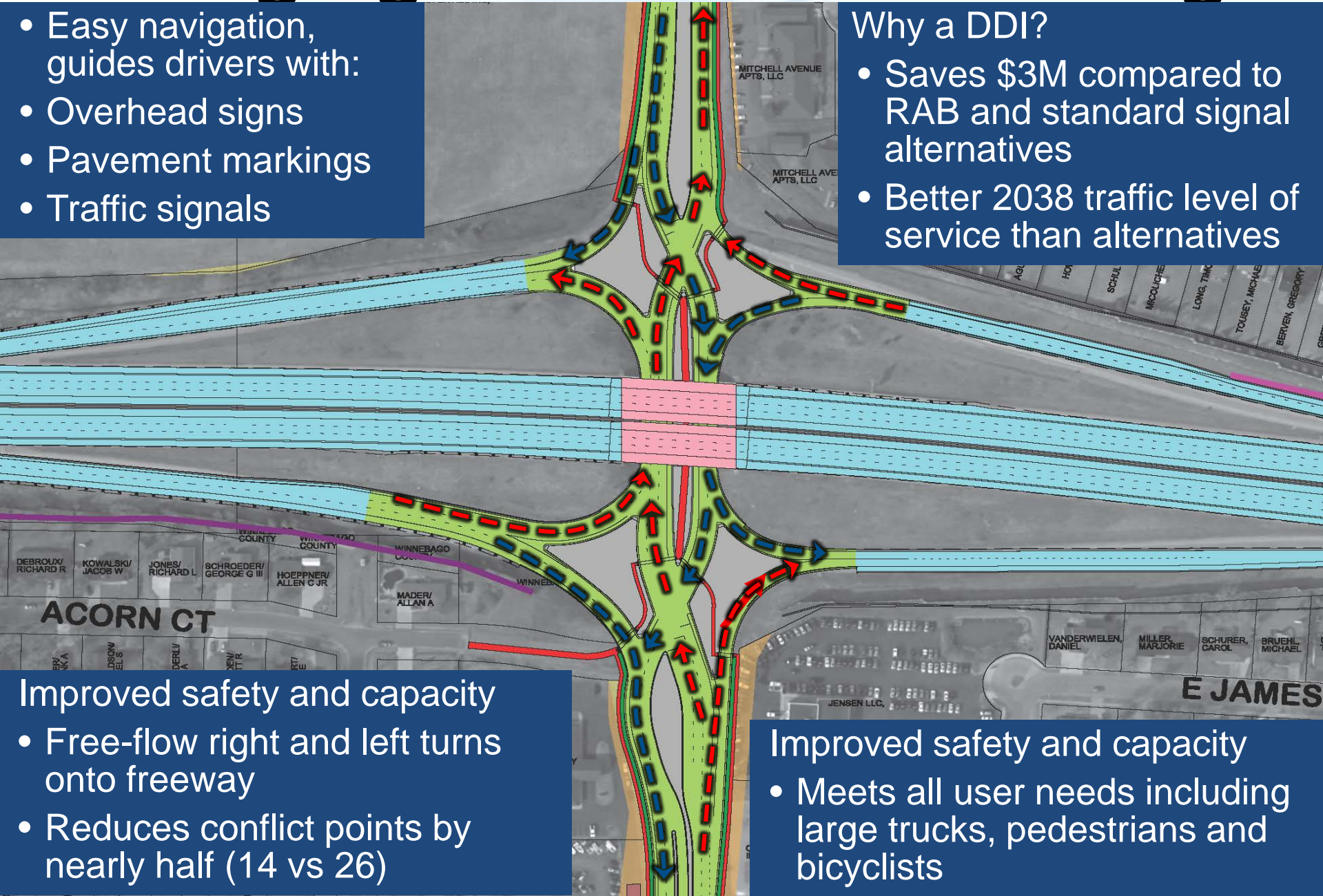


# Diverging Diamond Interchange

- Easy navigation, guides drivers with:
- Overhead signs
- Pavement markings
- Traffic signals

## Why a DDI?

- Saves \$3M compared to RAB and standard signal alternatives
- Better 2038 traffic level of service than alternatives



## Improved safety and capacity

- Free-flow right and left turns onto freeway
- Reduces conflict points by nearly half (14 vs 26)

## Improved safety and capacity

- Meets all user needs including large trucks, pedestrians and bicyclists

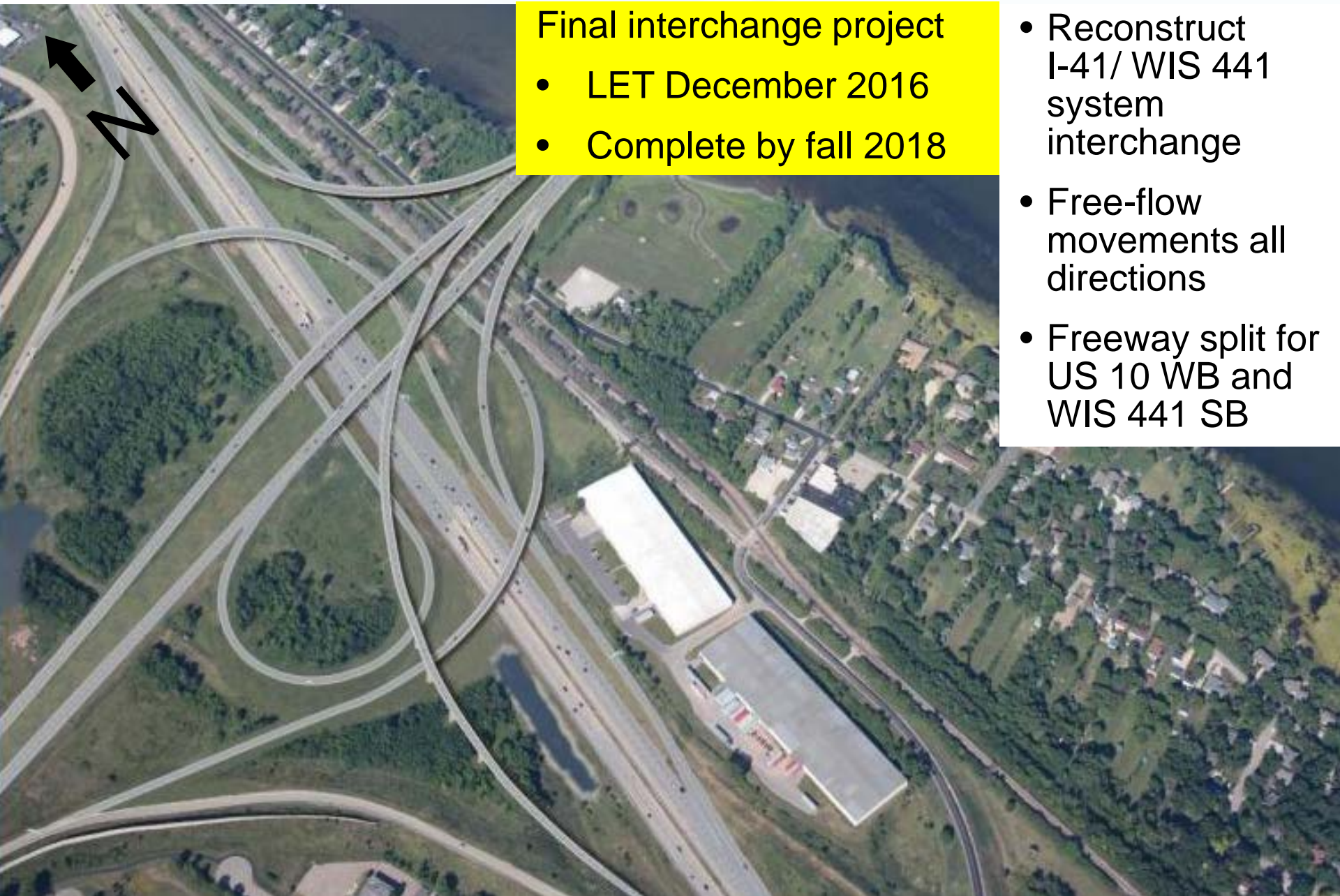
# 2018 Construction Updates



- I-41 System interchange
- LLBDM crossing
- Midway Road interchange
- Oneida Street Interchange



# I-41/US10 Interchange



## Final interchange project

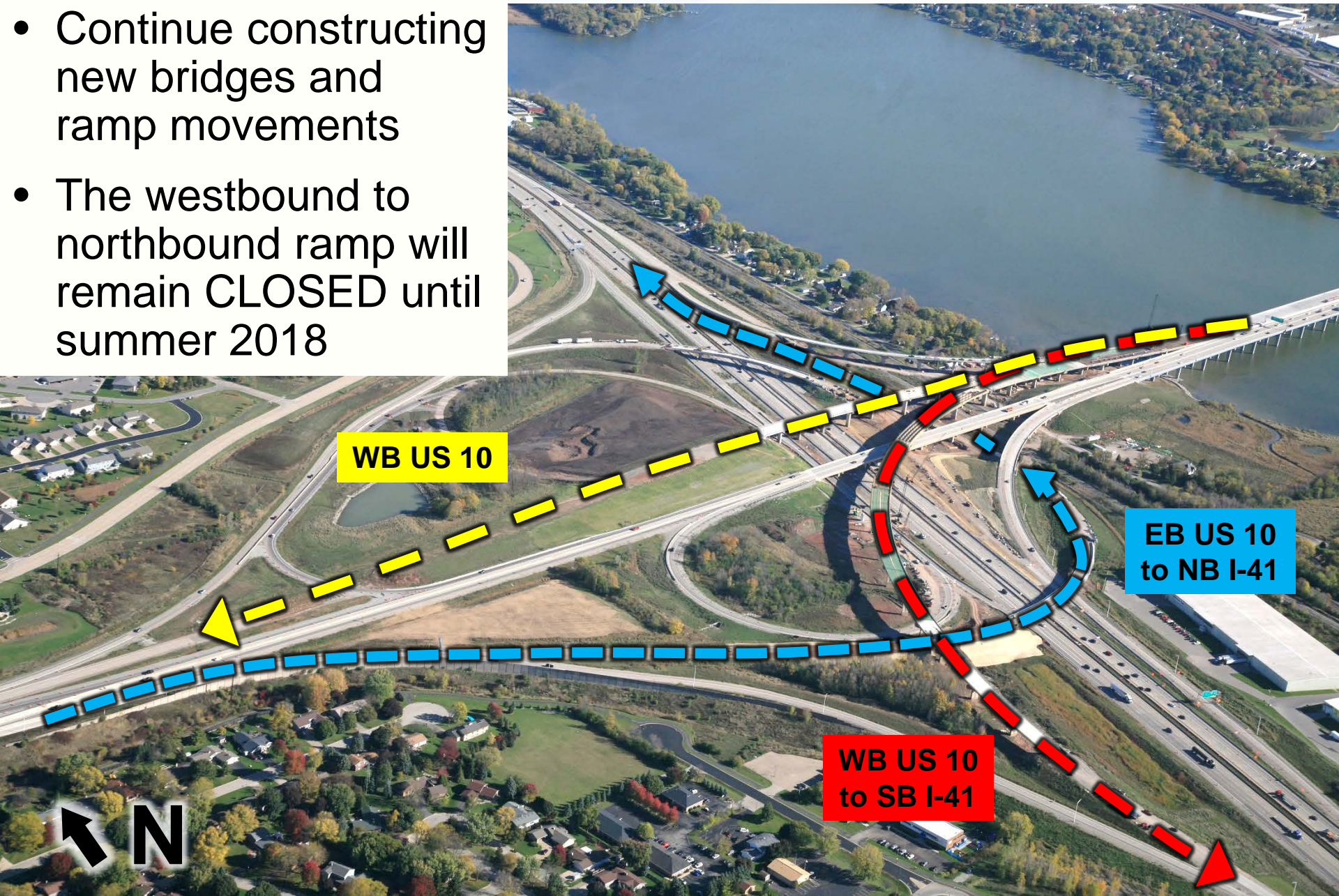
- LET December 2016
- Complete by fall 2018

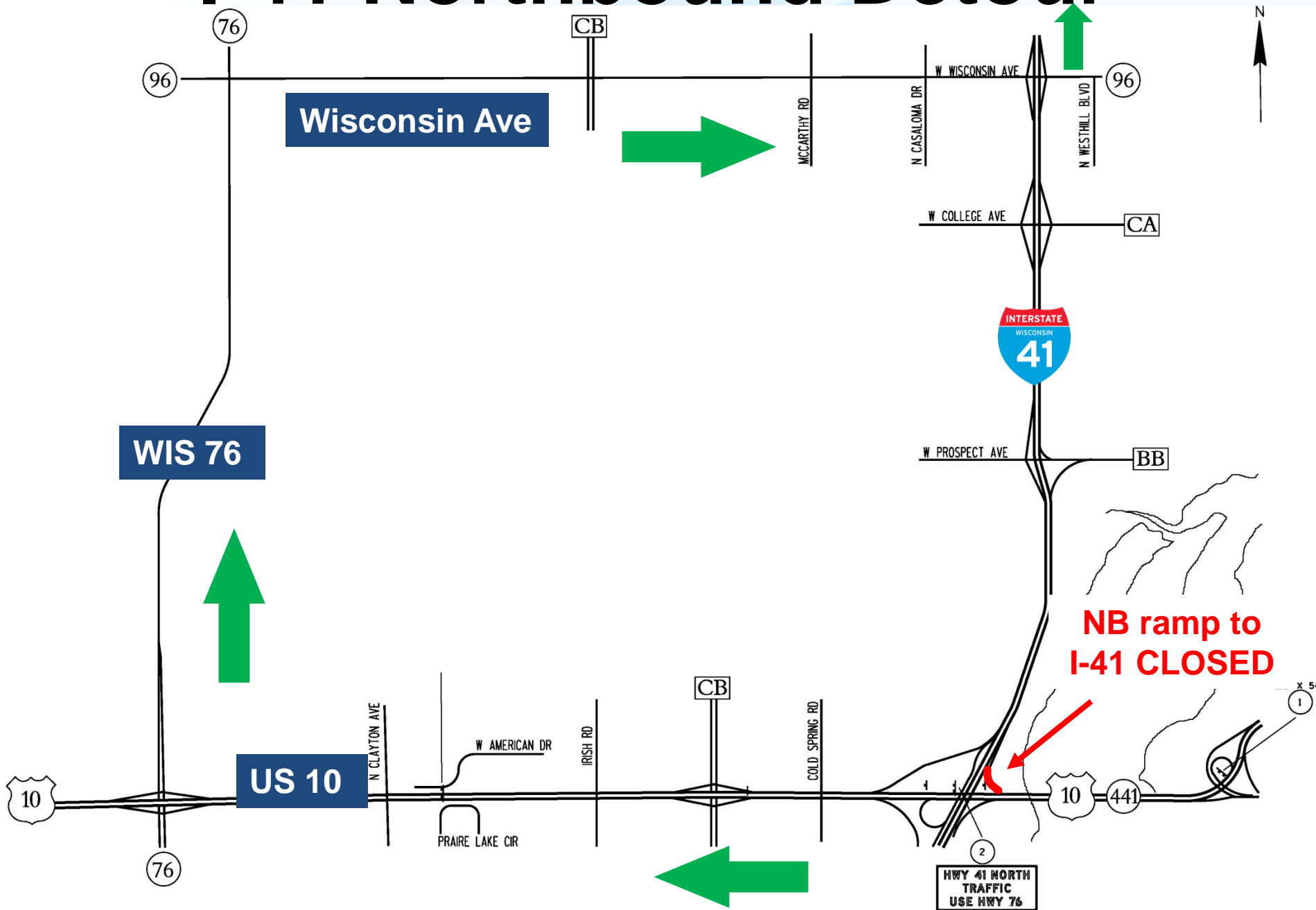
- Reconstruct I-41/ WIS 441 system interchange
- Free-flow movements all directions
- Freeway split for US 10 WB and WIS 441 SB



# 2018 Construction

- Continue constructing new bridges and ramp movements
- The westbound to northbound ramp will remain CLOSED until summer 2018







# I-41/US 10 Flyover Bridge

N ↑



Westbound to southbound flyover structure



# Restore Ramp Movements



EB US 10  
to NB I-41

NB I-41 to  
WB US 10

N



# LLBDM Crossing

- Traffic remains on new eastbound bridge over LLBDM
- Continue to recondition existing westbound bridge

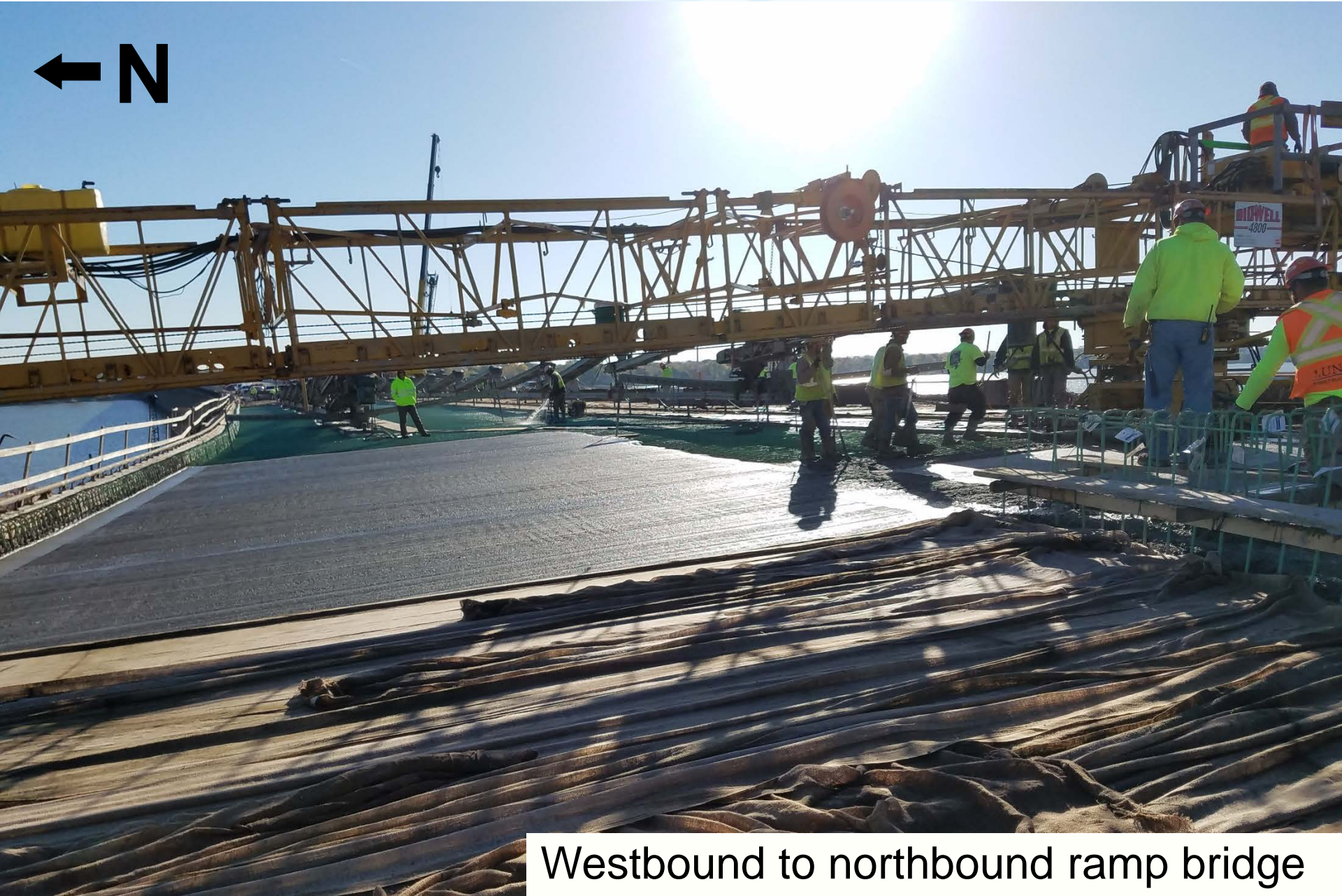


LLBDM bridge construction



# LLBDM Crossing

← N



Westbound to northbound ramp bridge



# Racine Road Interchange

WB exit-ramp will be  
closed 1 month  
spring / summer 2019

WB on-ramp will  
remain closed until  
summer 2018

Tayco Rd closed  
for reconstruction

Tayco Rd







Noise panel installation along Racine westbound exit ramp



# County AP/Midway Rd Interchange

Midway Road  
and Racine  
Road  
**CLOSURES** in  
summer 2019

**CLOSED**  
July 2017 to  
summer 2019

Racine Rd

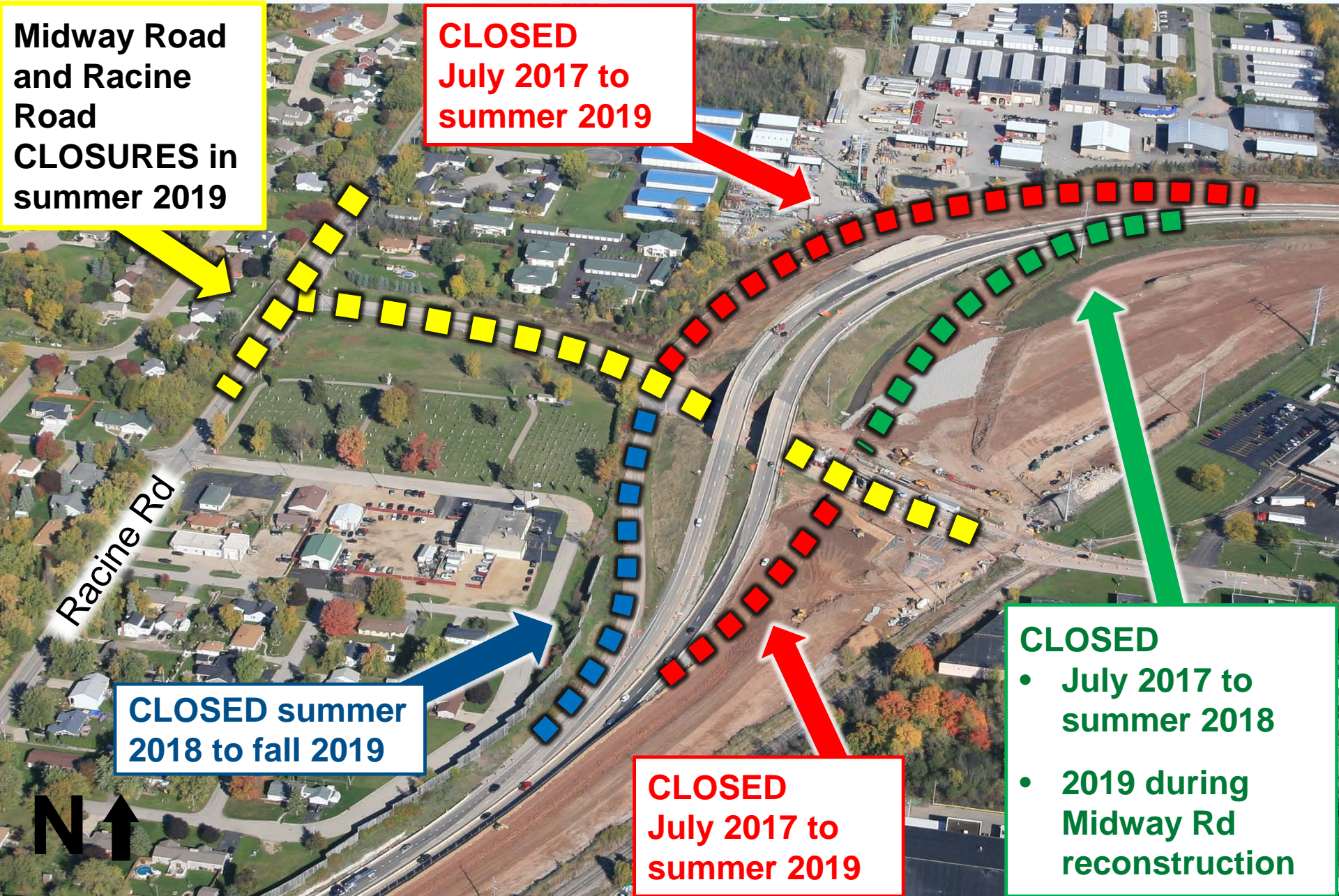
**CLOSED** summer  
2018 to fall 2019

**CLOSED**  
July 2017 to  
summer 2019

**CLOSED**

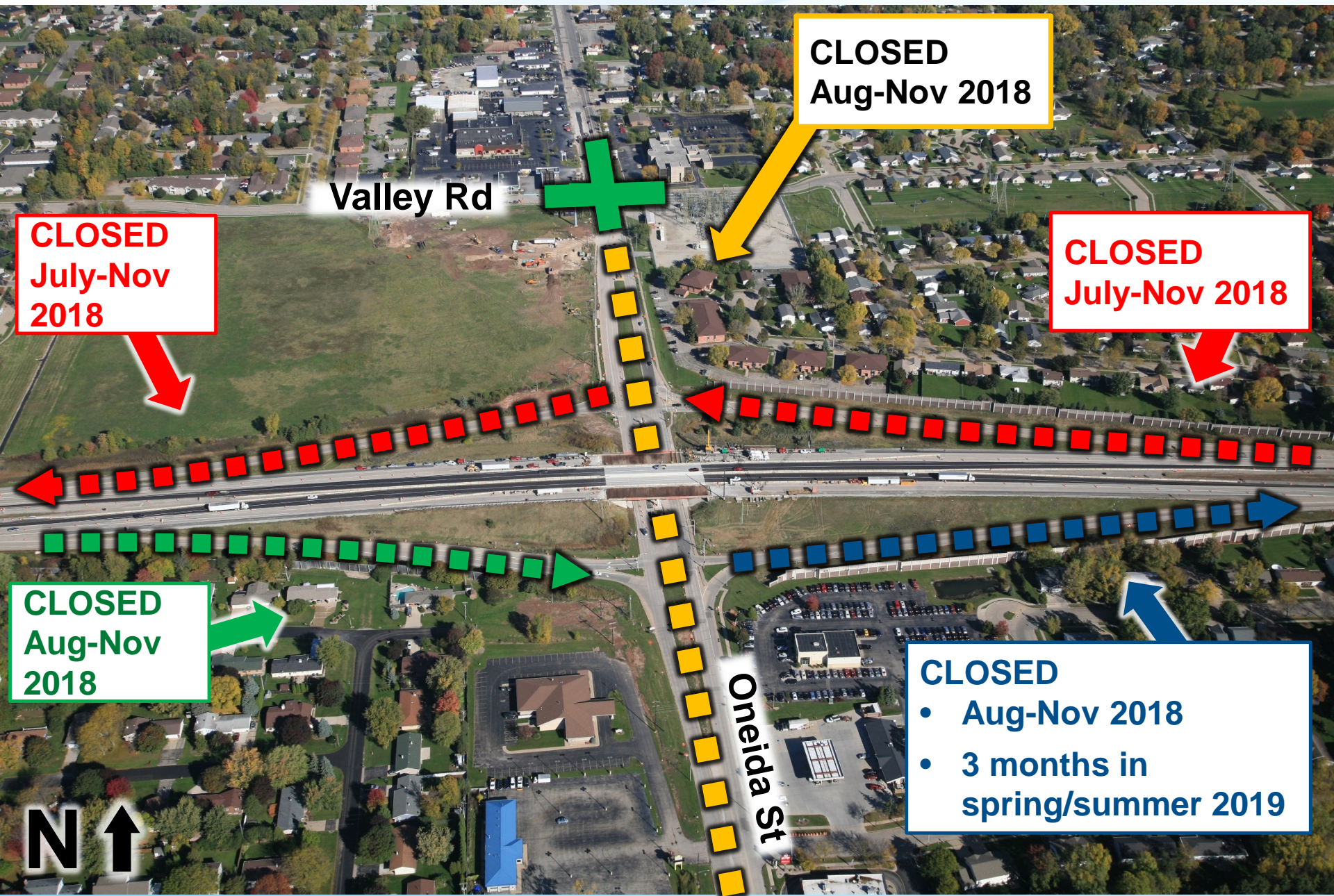
- July 2017 to summer 2018
- 2019 during Midway Rd reconstruction

N ↑





# Oneida Street Interchange



**CLOSED**  
Aug-Nov 2018

**CLOSED**  
July-Nov  
2018

**CLOSED**  
July-Nov 2018

**CLOSED**  
Aug-Nov  
2018

**CLOSED**

- Aug-Nov 2018
- 3 months in  
spring/summer 2019

Valley Rd

Oneida St

**N** ↑

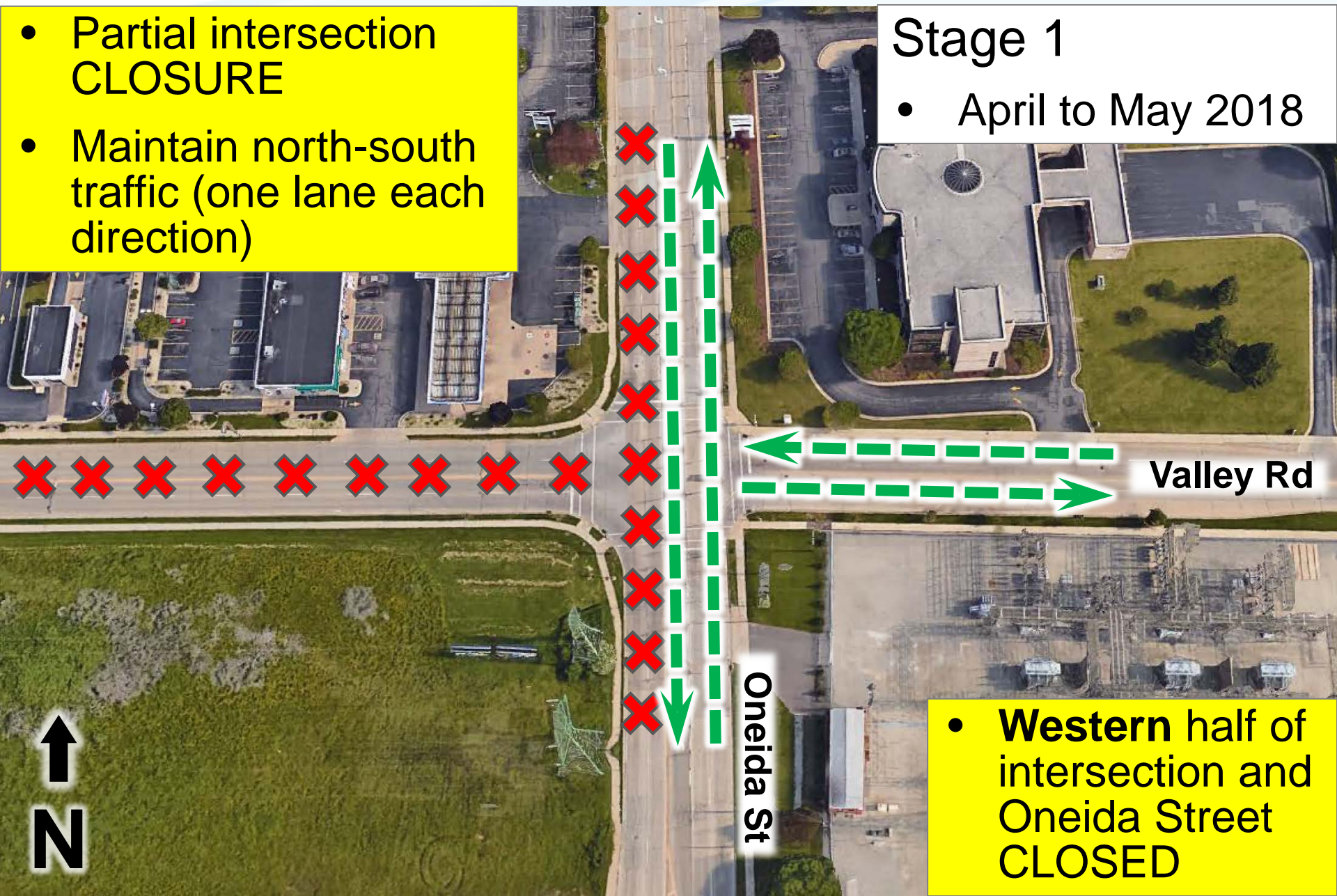


# Oneida St & Valley Rd Intersection

- Partial intersection CLOSURE
- Maintain north-south traffic (one lane each direction)

Stage 1

- April to May 2018



Valley Rd

Oneida St

- **Western half of intersection and Oneida Street CLOSED**

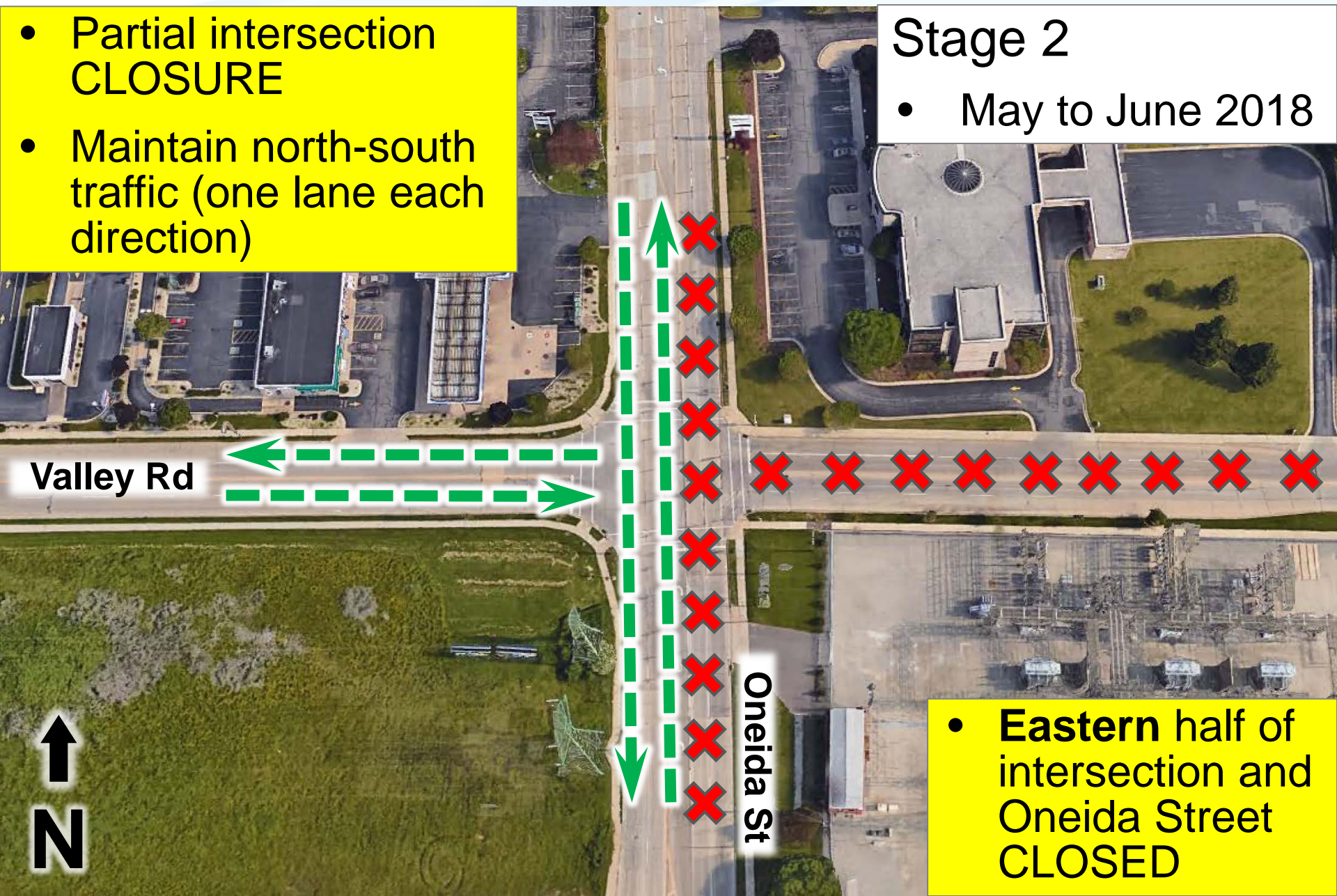


# Oneida St & Valley Rd Intersection

- Partial intersection CLOSURE
- Maintain north-south traffic (one lane each direction)

Stage 2

- May to June 2018



Valley Rd

Oneida St

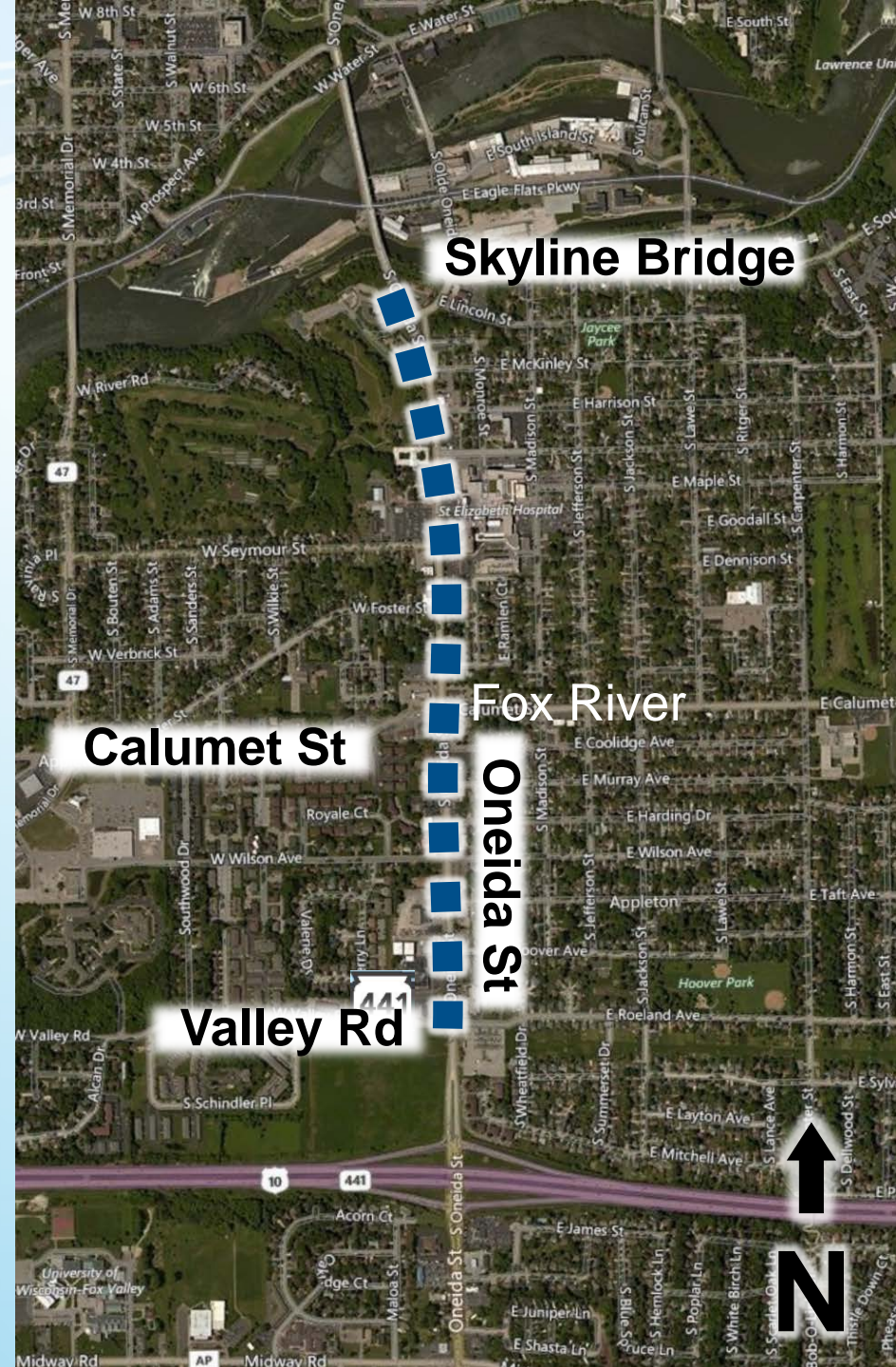
↑  
N

- **Eastern half of intersection and Oneida Street CLOSED**



# Other work in area

- City of Appleton
  - Roeland/Valley Road to Skyline bridge
  - Reconstruction of concrete pavement
  - April to Nov 2018
- Coordinated with WIS 441 project





# Business Resources

## 'In this together' kit

- Partnership with businesses
- Tools to maintain connection with customers
- Print ad templates
- Web banner ads
- Web site button

 WISCONSIN.GOV



State of Wisconsin  
Department of Transportation

ONLINE SERVICES

DMV

DOING BUSINESS

TRAVEL

SAFETY

PROJECTS AND STUDIES

ABOUT WISDOT

Search Wisconsin DOT



## In This Together

In This Together

Workbook

Case studies

Promotional samples

WisDOT recognizes businesses located in work zones have special needs. It's critical that customers have access to businesses and that they continue to visit them, regardless of any road work inconvenience.

The In This Together program includes:

- Workbook and
- Case studies that demonstrate techniques that have been successfully used in communities throughout Wisconsin.
- Promotional samples showing a variety of examples of how businesses have promoted their businesses during construction.



# Work Zone Safety

- Recognizing work zones
  - Flashing lights
  - Orange signs
  - Barrels and flags
- Driving
  - Slow down
  - Follow the law
  - Plan ahead
  - **Handheld devices are now illegal in work zones**
  - Expect the unexpected
- Consequences

- Freeway Service Team
- Intelligent Transportation Systems (ITS)
- Emergency responder meetings





# Construction Communication

- Traffic impacts
  - Nighttime lane closures
  - Ramp closures
- Changeable message boards
- News / media alerts
- Website



# Project Website

## WIS 441 Tri-County Project

Tri-County Expansion



[www.projects.511wi.gov/wis441/](http://www.projects.511wi.gov/wis441/)

OVERVIEW

SCHEDULE

MAP

CLOSURES

NEWS RELEASES

PHOTOS

RESOURCES ▸

CONTACT

### Overview

Welcome to the WIS 441 Tri-County Project construction website! The WIS 441 Project will reconstruct and expand approximately 6 miles of US 10 / WIS 441 from 4 lanes to 6 lanes between Cold Spring Road (County B) and Oneida Street (US 10) in Winnebago County and reconstruct five interchanges and the Roland Kamp Bridge.

Need daily road closures for the WIS 441 Project?

Follow us on social media!

facebook



FULL OVERVIEW



- Keeping public informed
  - Project web presence
  - Media outreach
  - Newsletters
  - Public meetings
  - Social media
- Feedback





# Questions?