



# TRI-COUNTY EXPANSION



U.S. Department of Transportation  
**Federal Highway  
Administration**

# **WIS 441 Tri-County Project**

## **Construction Update County II Interchange and American Drive Business Meeting**

**May 26, 2016**

# Introductions

- WIS 441 Tri-County Project team
  - Will Dorsey, Northeast Region Director
  - Tom Buchholz, Project Development Manager
  - Tammy Rabe, Construction Supervisor
  - Kurt Peters, Construction Project Manager
  - Adam Janz, Resident Construction Engineer
  - Chad DeGrave, Design Supervisor
  - Scott Ebel, Design Project Manager
  - Melissa Kok, Assistant Communications Manager

# Project Schedule

Function	2012	2013	2014	2015	2016	2017	2018	2019	2020	2021
Design										
Real Estate										
Utilities										
Construction										

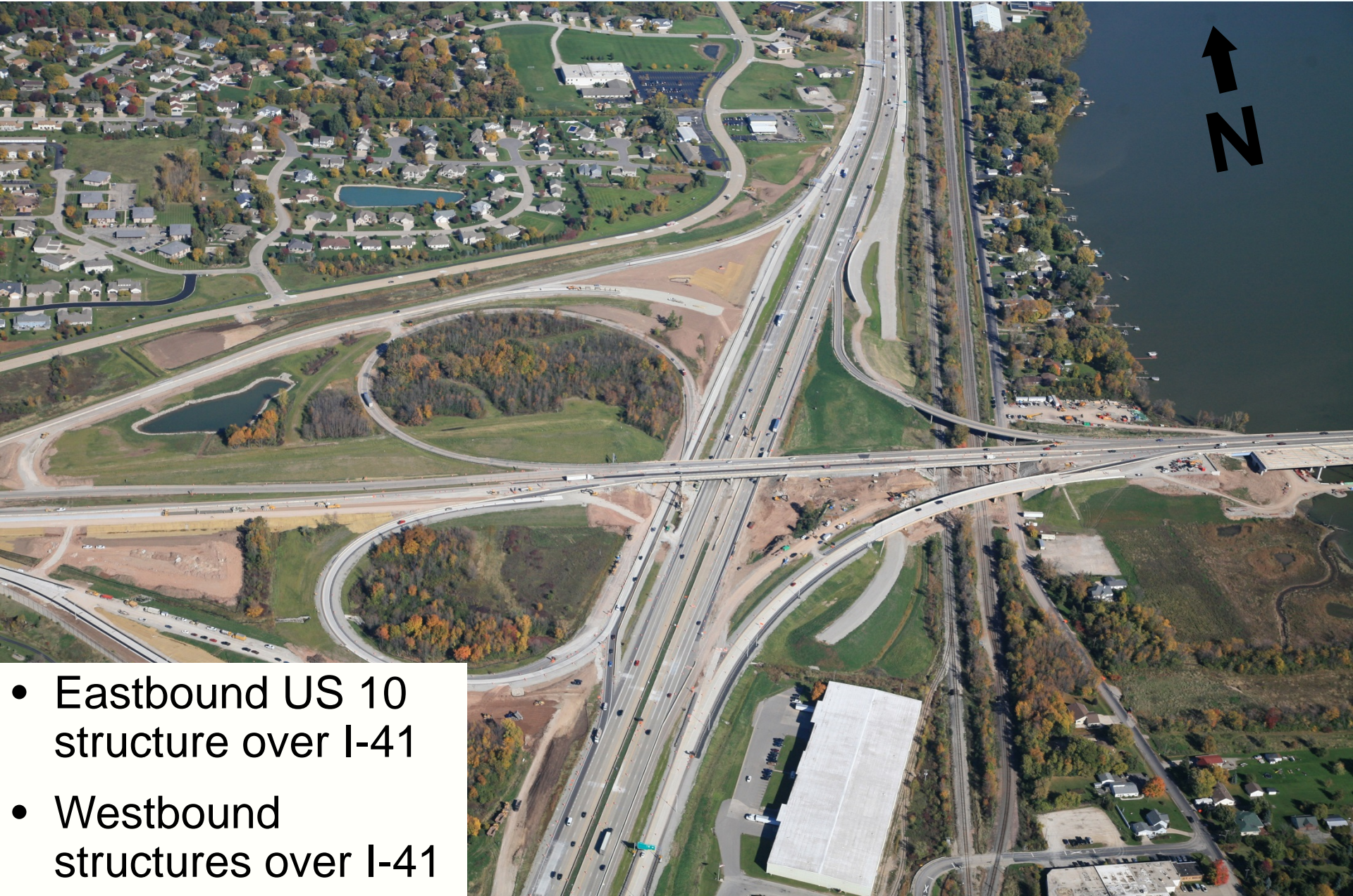
# 2016 Construction Preview



- I-41 System interchange
- LLBDM crossing
- Racine Road and interchange
- I-41 mainline, County II



# I-41 System Interchange



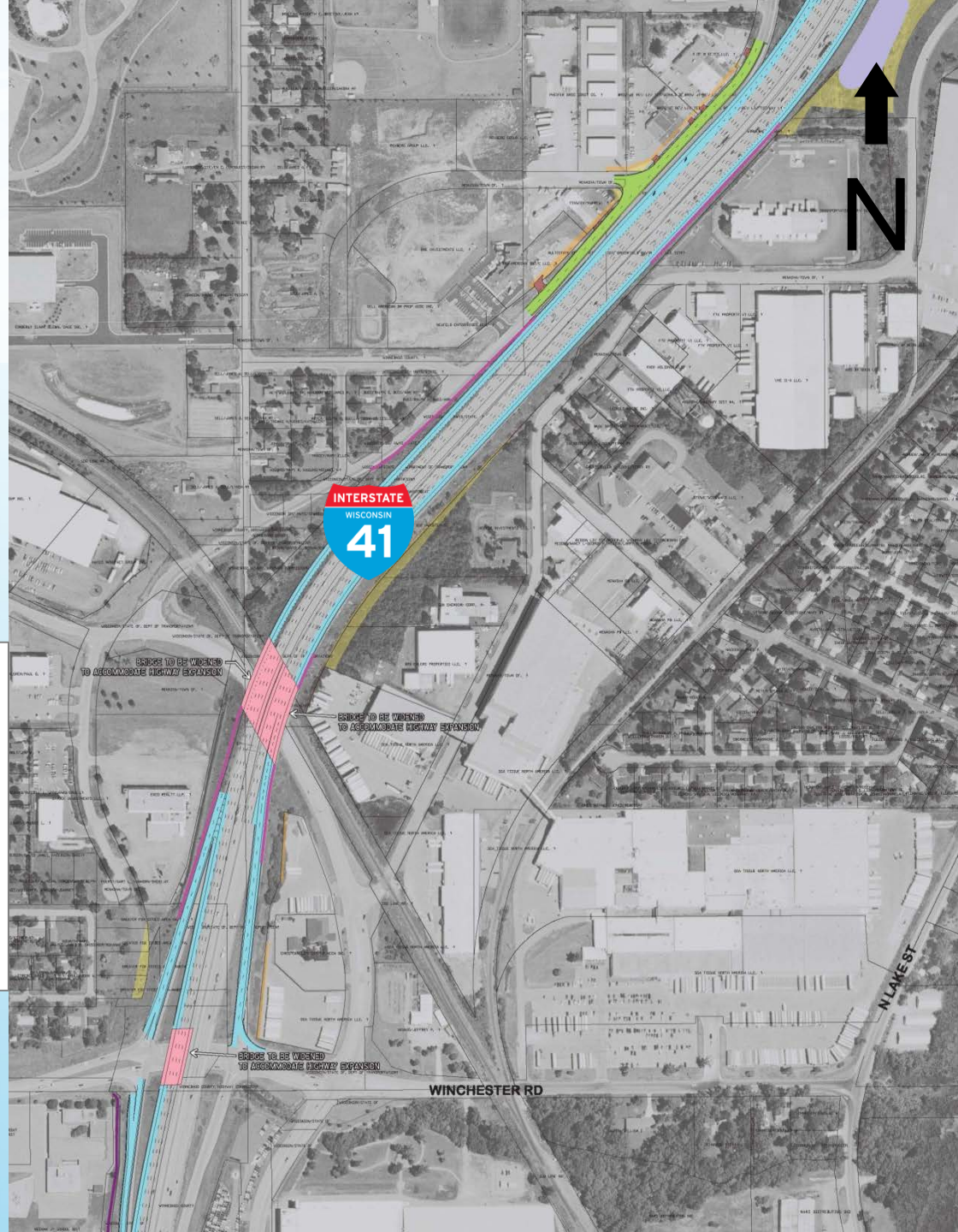
- Eastbound US 10 structure over I-41
- Westbound structures over I-41



# I-41/WIS 441 Interchange and mainline (south)

2016

- Add auxiliary lanes on I-41
- Reconstruct County II interchange ramps
- American Drive





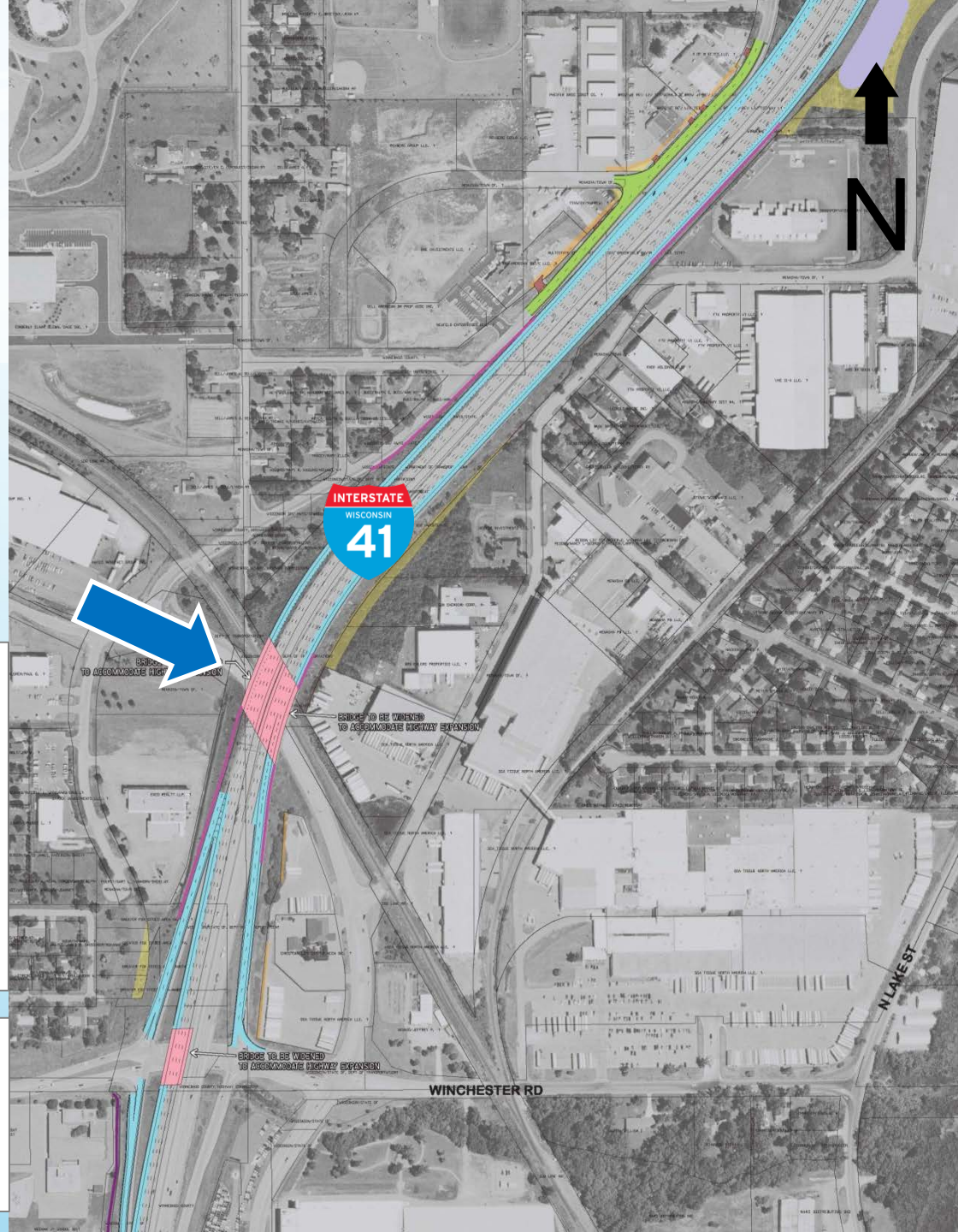
# I-41/WIS 441 Interchange and mainline (south)

2016

- Add auxiliary lanes on I-41
- Reconstruct County II interchange ramps
- American Drive

2017

- 2017 Green Bay Road structure widening





# I-41 and County II interchange

American Drive will be reconstructed to accommodate widening of I-41

- Requires a 30-day closure in July 2016
- Local business traffic access will be maintained



Construct auxiliary lanes on I-41 mainline

- June through mid-October
- Periodic lane/shoulder closures
- Most lane closures at night

**SB Exit**  
closed August to September

**SB Entrance**  
closed August to September

**NB Entrance** closed  
August to September

County II

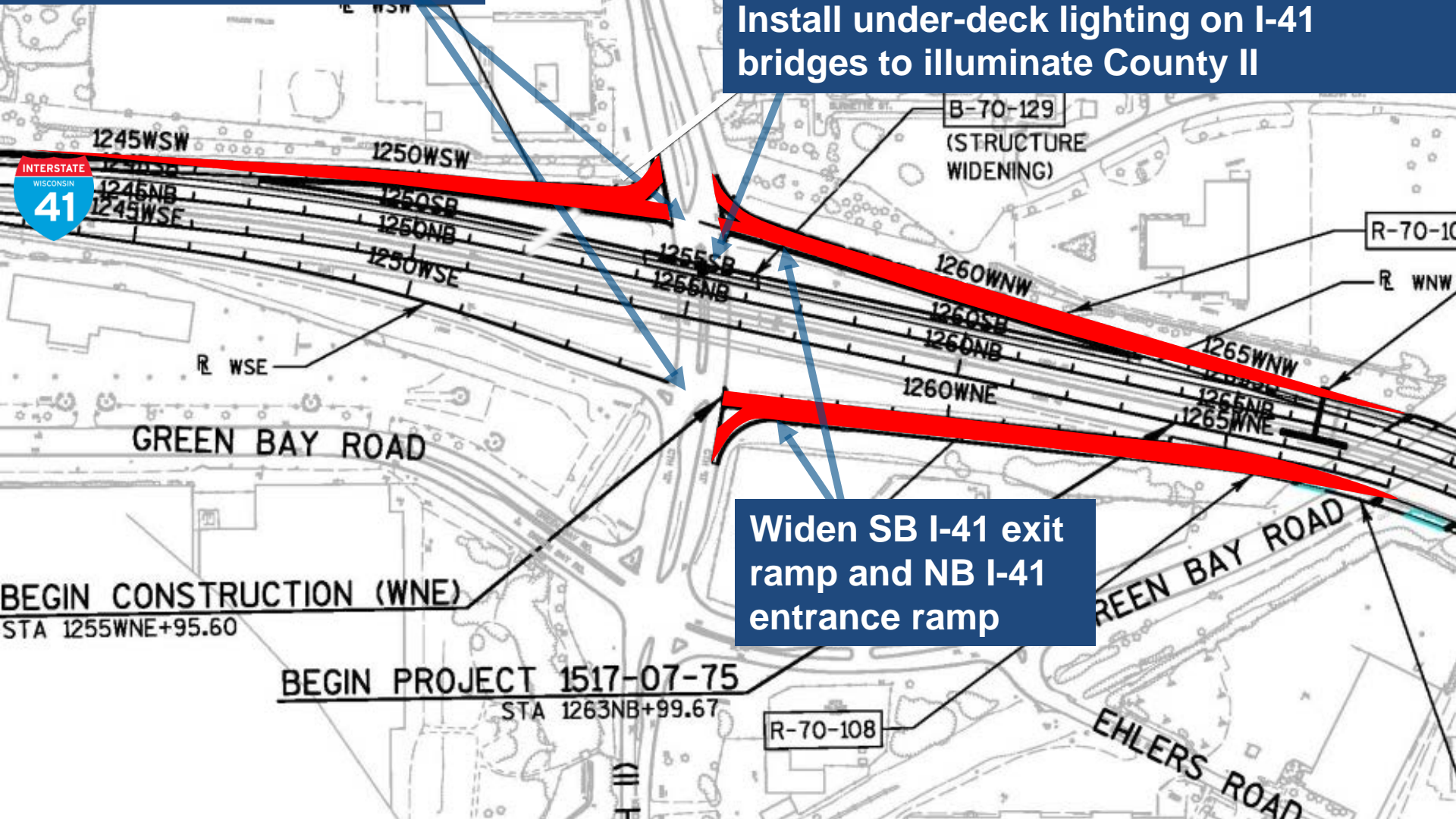


# I-41 and County II interchange

New signals at ramp intersections with County II (Winchester Rd)

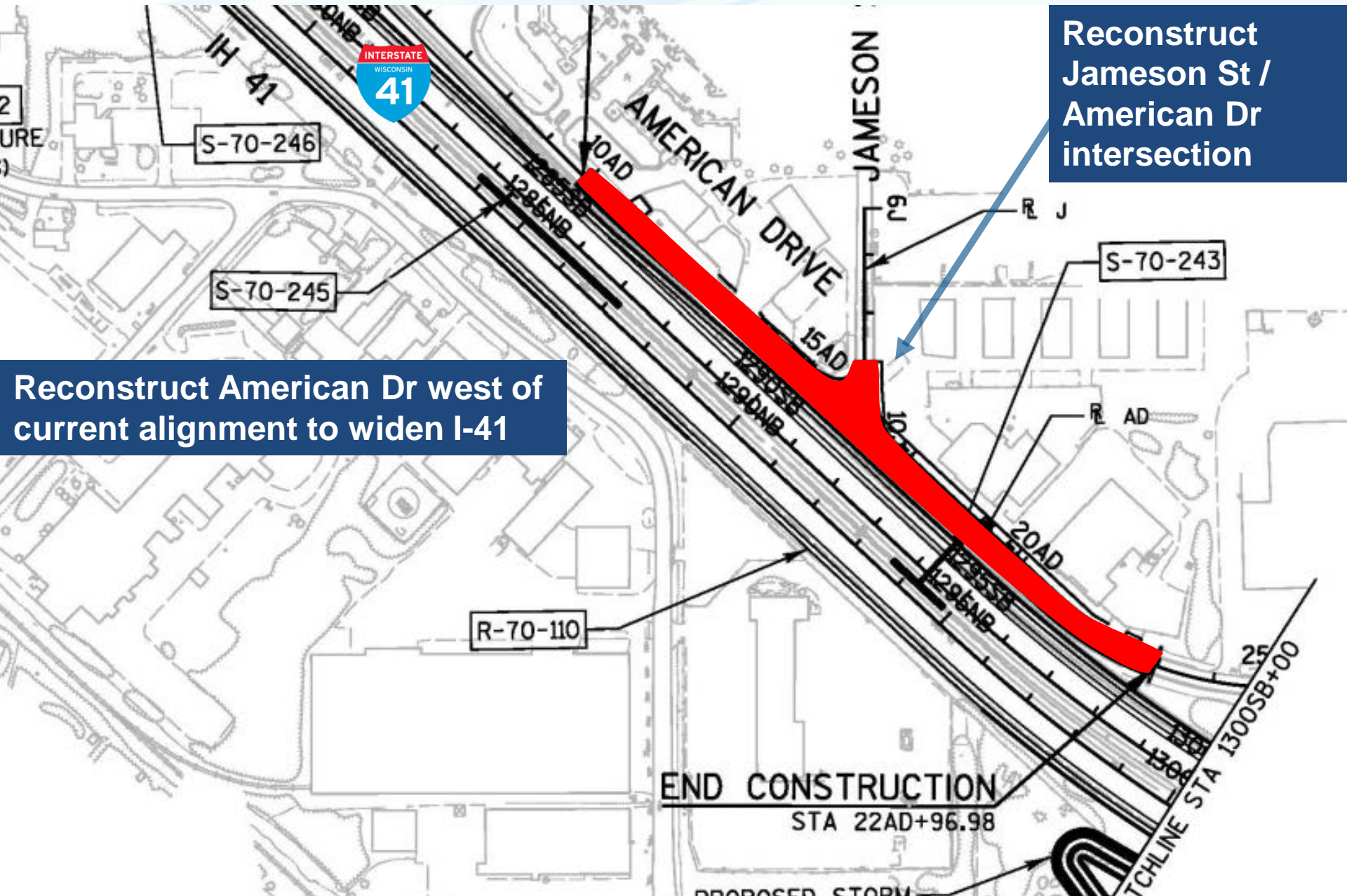
Widen southbound I-41 bridge over County II

Install under-deck lighting on I-41 bridges to illuminate County II





# I-41 and County II interchange



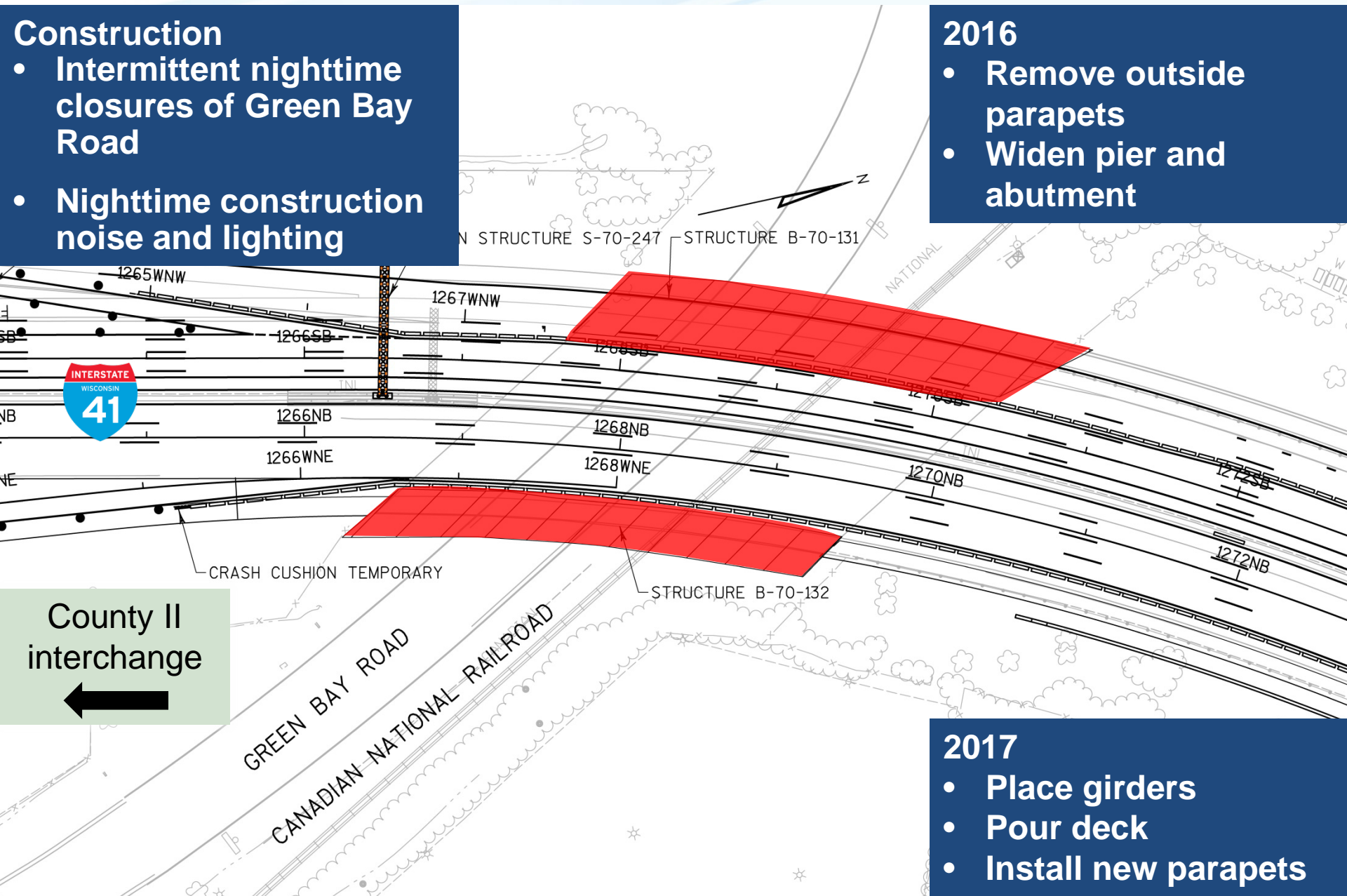
# I-41 over Green Bay Road

## Construction

- Intermittent nighttime closures of Green Bay Road
- Nighttime construction noise and lighting

## 2016

- Remove outside parapets
- Widen pier and abutment



County II  
interchange



## 2017

- Place girders
- Pour deck
- Install new parapets



# Work Zone Safety

- Recognizing work zones
  - Flashing lights
  - Orange signs
  - Barrels and flags
- Driving
  - Slow down
  - Follow the law
  - Plan ahead
  - Put your cell phone away
  - Expect the unexpected
- Consequences

- Freeway Service Team
- Intelligent Transportation Systems (ITS)
- Emergency responder meetings



# Business Resources

## WIS 441 Tri-County Project

Tri-County Expansion



OVERVIEW

SCHEDULE

MAP

CLOSURES

NEWS RELEASES

### Business Resources

Construction projects bring about a whole new set of challenges for businesses — that's why we're offering help. This online kit will supply you with communications tools that will help you advertise your business and keep in touch with your customers and suppliers.

#### In This Together – Workbook

The WisDOT can work together with businesses to succeed during this highway construction project. Visit the [WisDOT website](#) for more resources.

#### WIS 441 Tri-County Expansion mini communications guide

A guide designed to help businesses both formulate and implement a plan to help them survive and thrive during construction on WIS 441.

#### WIS 441 Tri-County Expansion mini communications guide

[Temporary Business Sign Application](#)

[Application](#)

<http://projects.511wi.gov/wis441/business-resources/>

- Partnership with businesses and provides tools to assist businesses:
  - Planning ahead and staying informed
  - Handling and reducing traffic
  - Keeping customers informed



# Business Resources - Signing

- Recommend that business signs be coordinated
- WisDOT construction staff will facilitate coordination with municipalities
  - Confirm acceptability of proposed sign location
- Businesses submit permits to either:
  - WisDOT - use the temporary business sign permit for state highways
  - Municipalities, Counties – other roadways, note individual sign support requirements vary by community



# Construction Communication

- Traffic impacts
  - Nighttime lane closures
  - Ramp closures
- Changeable message boards
- News / media alerts
- Website





# Project Website

## WIS 441 Tri-County Project

Tri-County Expansion



[www.projects.511wi.gov/wis441/](http://www.projects.511wi.gov/wis441/)

OVERVIEW

SCHEDULE

MAP

CLOSURES

NEWS RELEASES

PHOTOS

RESOURCES ▸

CONTACT

### Overview

Welcome to the WIS 441 Tri-County Project construction website! The WIS 441 Project will reconstruct and expand approximately 6 miles of US 10 / WIS 441 from 4 lanes to 6 lanes between Cold Spring Road (County B) and Oneida Street (US 10) in Winnebago County and reconstruct five interchanges and the Roland Kamp Bridge.

Need daily road closures for the WIS 441 Project?

Follow us on social media!

facebook



FULL OVERVIEW



- Keeping public informed
  - Project web presence
  - Media outreach
  - Newsletters
  - Public meetings
  - Social media
- Feedback

# Communicating With You

- Comment forms
  - Submit today or via mail
  - Submit comments by June 16, 2016
- Join project email list
  - Provide email address on sign-in sheets
  - Send email to project staff

[illegible]



# Project Office



- Field office
  - Permanent presence
  - Public / business involvement





**Questions?**