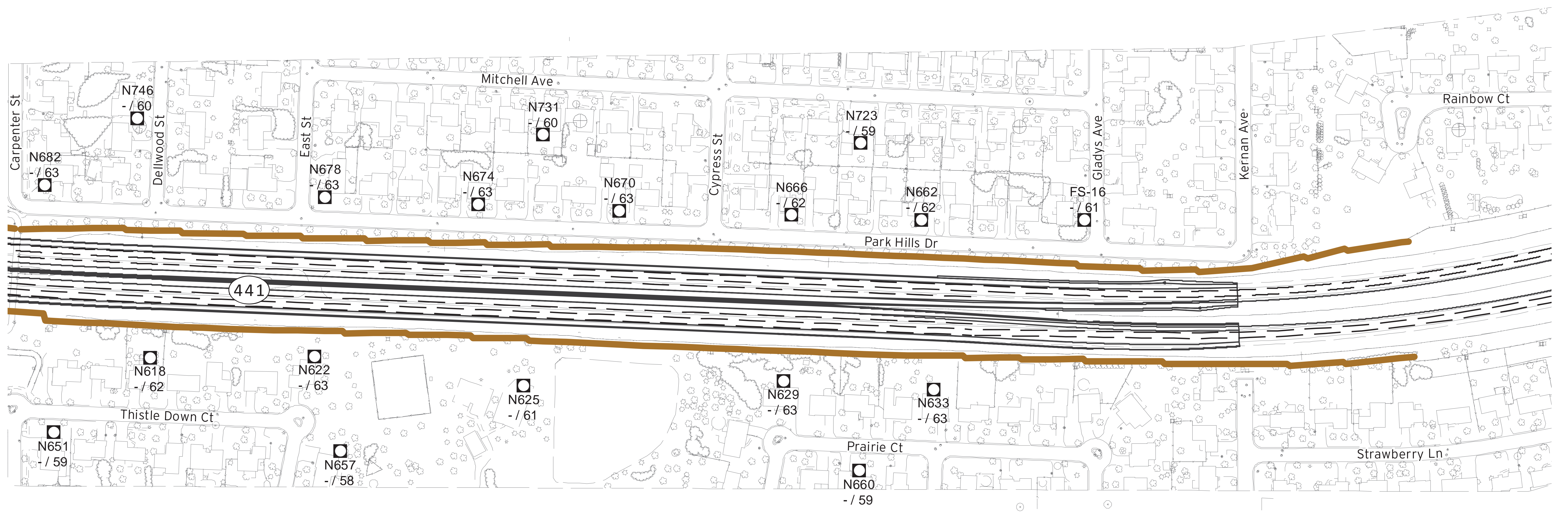


LEGEND

- MODELED RECEPTOR
- IMPACTED MODELED RECEPTOR
- IMPACTED AND BENEFITED MODELED RECEPTOR
- ACQUIRED OR TO BE ACQUIRED PROPERTIES
- EXISTING NOISE BARRIER

N1- Receiver Number  
72/65 - Noise Level without barrier/Noise Level with barrier - dBA, Leq

- PROPOSED NOISE BARRIER HEIGHTS
- 9-12
  - 13-16
  - 17-20
  - 21-24
  - 25-28





LEGEND

- MODELED RECEPTOR
- IMPACTED MODELED RECEPTOR
- IMPACTED AND BENEFITED MODELED RECEPTOR
- ACQUIRED OR TO BE ACQUIRED PROPERTIES
- EXISTING NOISE BARRIER

N1- Receiver Number  
72/65 - Noise Level without barrier/Noise Level with barrier - dBA, Leq

PROPOSED NOISE BARRIER HEIGHTS

- 9-12
- 13-16
- 17-20
- 21-24
- 25-28



Noise Barrier Heights

US 10/441 | Winnebago, Outagamie and Calumet County





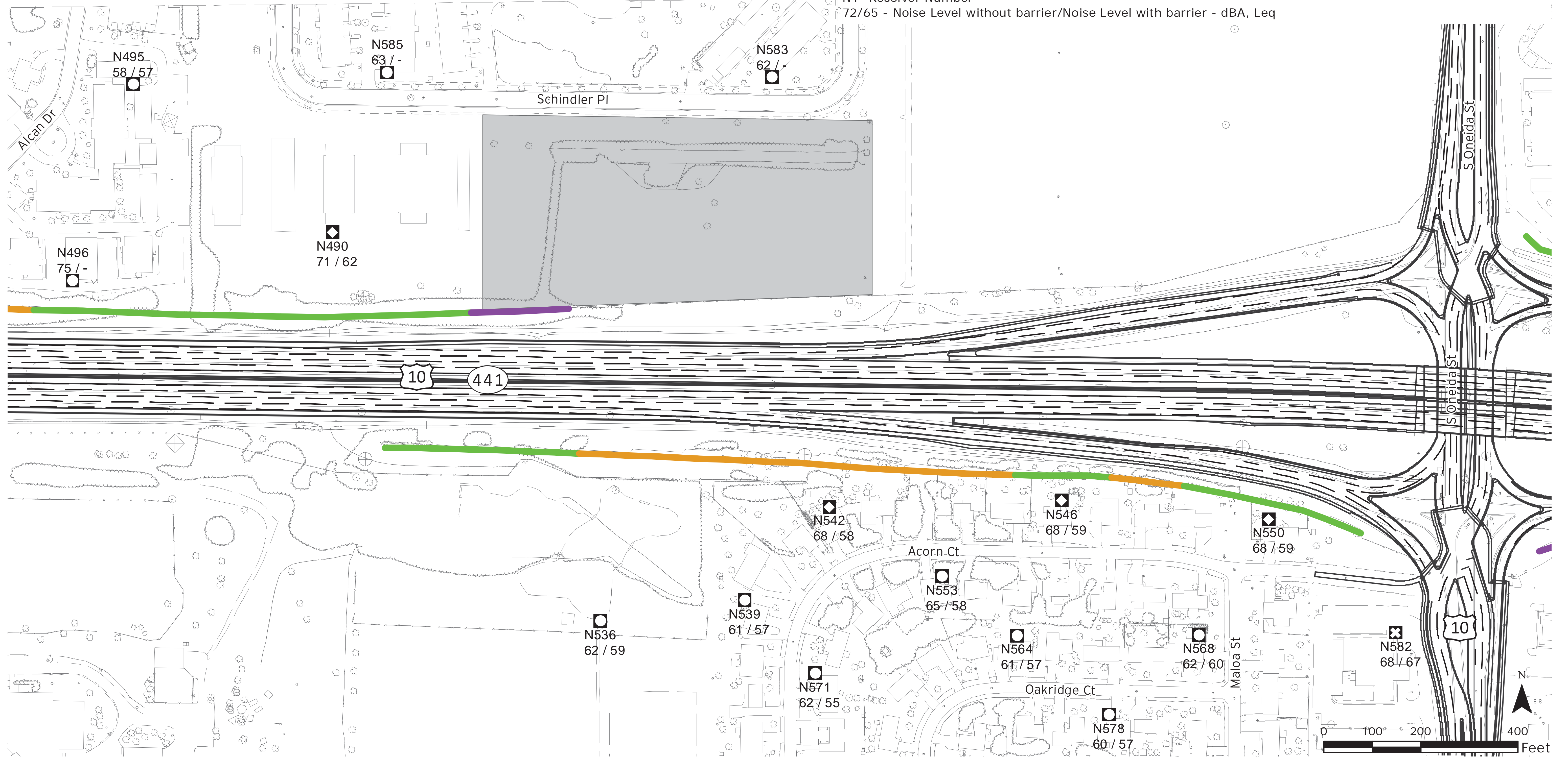
LEGEND

- MODELED RECEPTOR
- IMPACTED MODELED RECEPTOR
- IMPACTED AND BENEFITED MODELED RECEPTOR
- ACQUIRED OR TO BE ACQUIRED PROPERTIES
- EXISTING NOISE BARRIER

PROPOSED NOISE BARRIER HEIGHTS

- 9-12
- 13-16
- 17-20
- 21-24
- 25-28

N1- Receiver Number  
72/65 - Noise Level without barrier/Noise Level with barrier - dBA, Leq



Noise Barrier Heights

US 10/441 | Winnebago, Outagamie and Calumet County





LEGEND

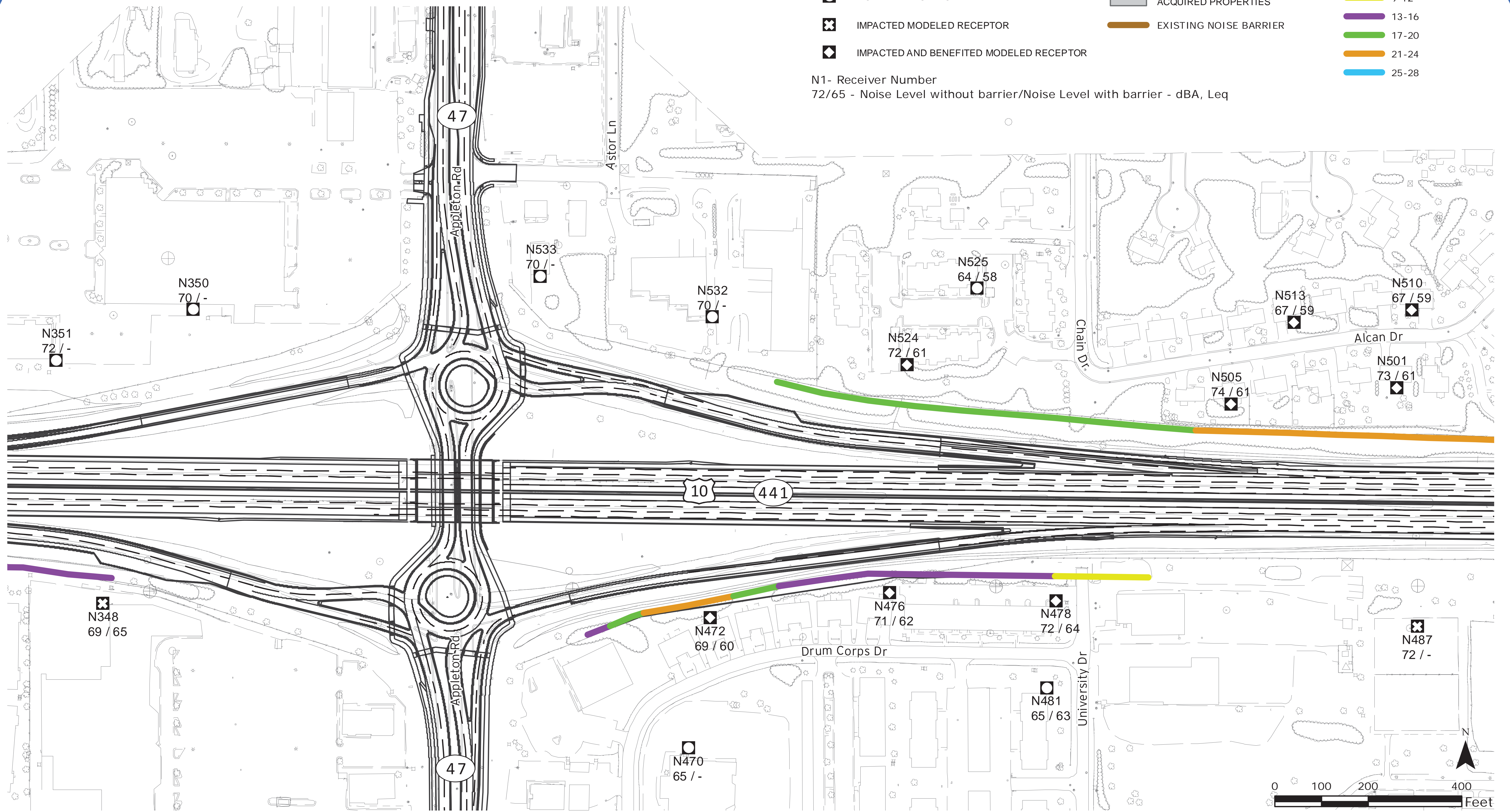
- MODELED RECEPTOR
- IMPACTED MODELED RECEPTOR
- IMPACTED AND BENEFITED MODELED RECEPTOR

- ACQUIRED OR TO BE ACQUIRED PROPERTIES
- EXISTING NOISE BARRIER

PROPOSED NOISE BARRIER HEIGHTS

- 9-12
- 13-16
- 17-20
- 21-24
- 25-28

N1- Receiver Number  
72/65 - Noise Level without barrier/Noise Level with barrier - dBA, Leq



Noise Barrier Heights

US 10/441 | Winnebago, Outagamie and Calumet County





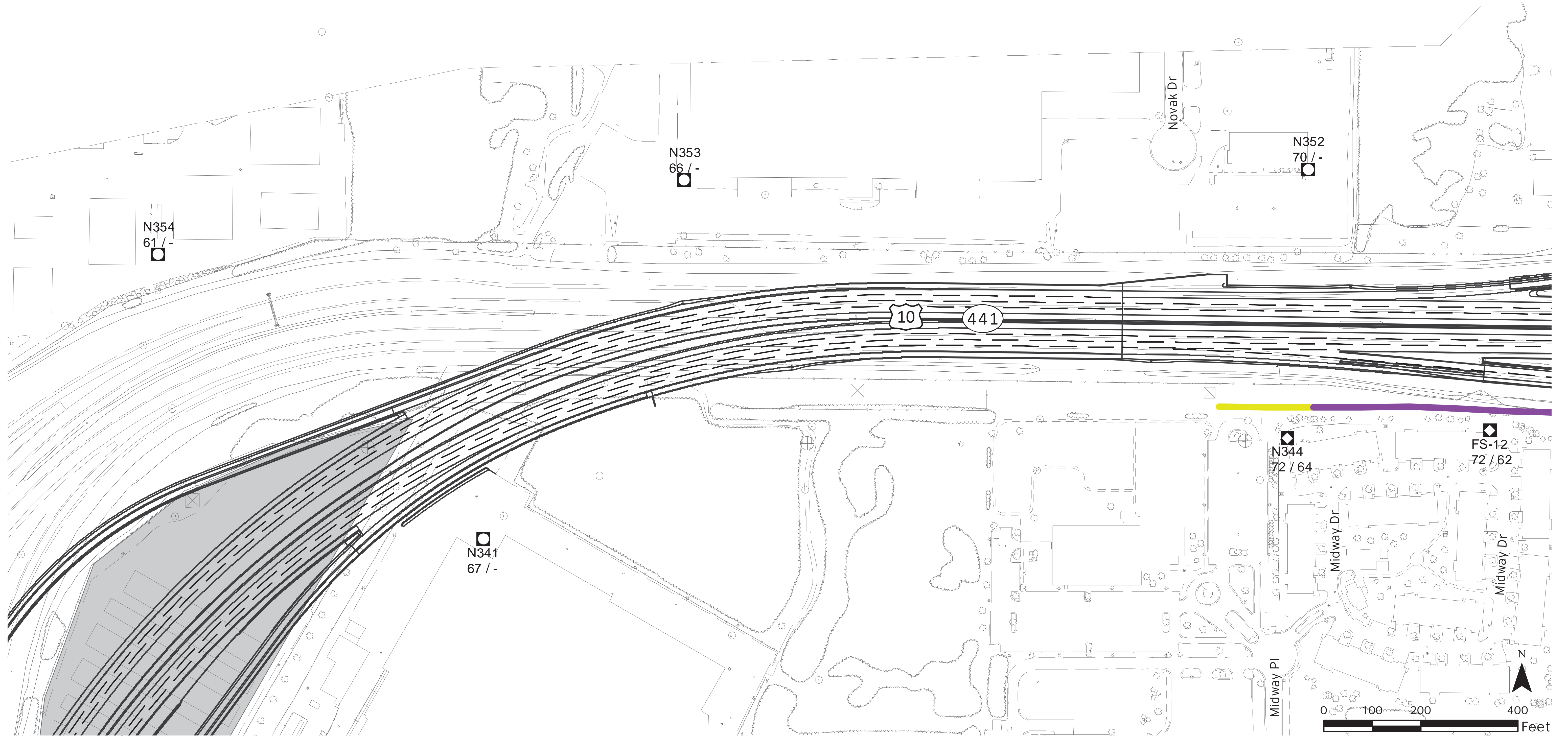
LEGEND

- MODELED RECEPTOR
- IMPACTED MODELED RECEPTOR
- IMPACTED AND BENEFITED MODELED RECEPTOR
- ACQUIRED OR TO BE ACQUIRED PROPERTIES
- EXISTING NOISE BARRIER

PROPOSED NOISE BARRIER HEIGHTS

- 9-12
- 13-16
- 17-20
- 21-24
- 25-28

N1- Receiver Number  
72/65 - Noise Level without barrier/Noise Level with barrier - dBA, Leq



Noise Barrier Heights

US 10/441 | Winnebago, Outagamie and Calumet County





LEGEND

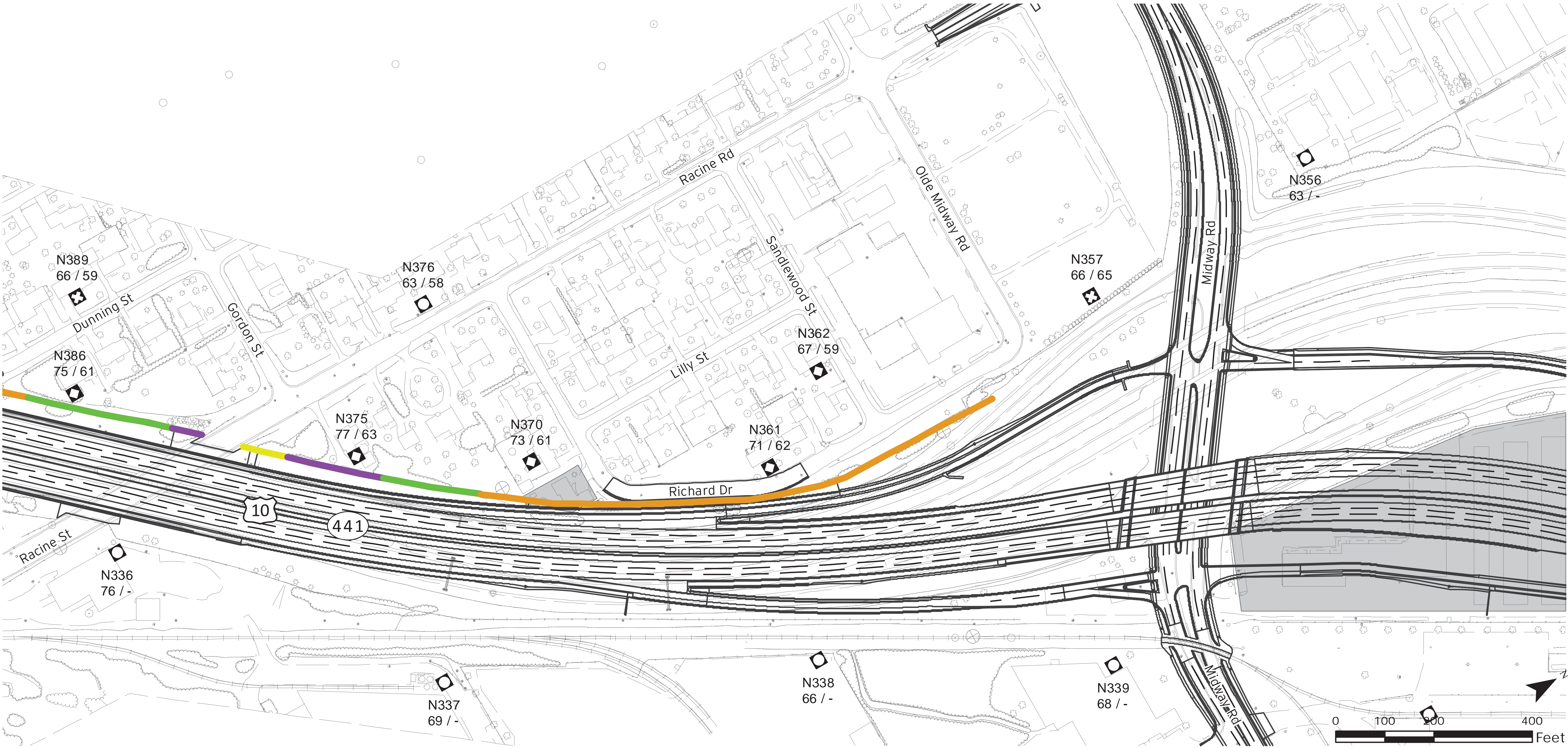
- MODELED RECEPTOR
- IMPACTED MODELED RECEPTOR
- IMPACTED AND BENEFITED MODELED RECEPTOR

- ACQUIRED OR TO BE ACQUIRED PROPERTIES
- EXISTING NOISE BARRIER

PROPOSED NOISE BARRIER HEIGHTS

- 9-12
- 13-16
- 17-20
- 21-24
- 25-28

N1- Receiver Number  
72/65 - Noise Level without barrier/Noise Level with barrier - dBA, Leq



Noise Barrier Heights

US 10/441 | Winnebago, Outagamie and Calumet County





**LEGEND**

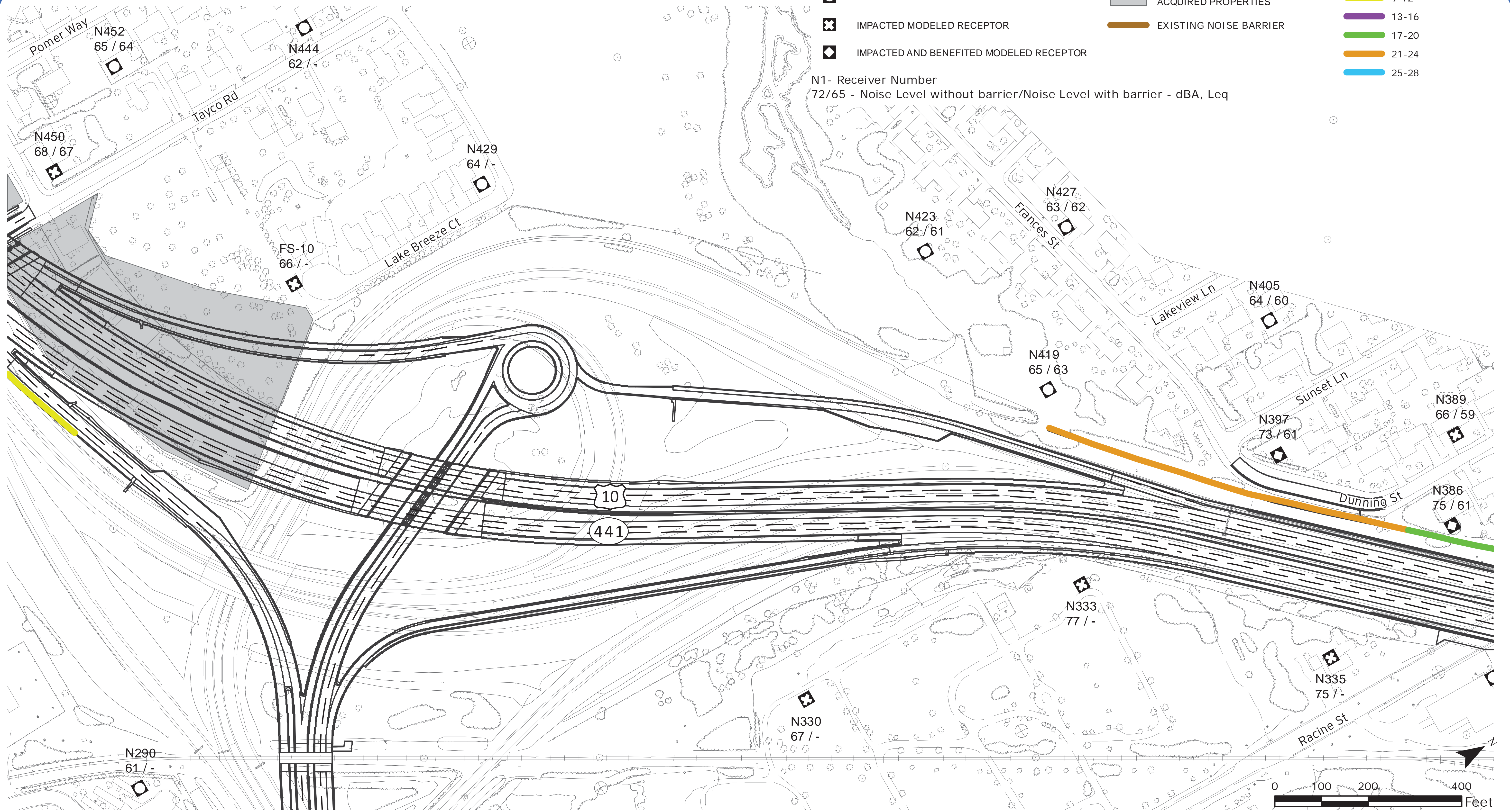
- MODELED RECEPTOR
- IMPACTED MODELED RECEPTOR
- IMPACTED AND BENEFITED MODELED RECEPTOR

- ACQUIRED OR TO BE ACQUIRED PROPERTIES
- EXISTING NOISE BARRIER

**PROPOSED NOISE BARRIER HEIGHTS**

- 9-12
- 13-16
- 17-20
- 21-24
- 25-28

N1- Receiver Number  
72/65 - Noise Level without barrier/Noise Level with barrier - dBA, Leq



**Noise Barrier Heights**

US 10/441 | Winnebago, Outagamie and Calumet County





**LEGEND**

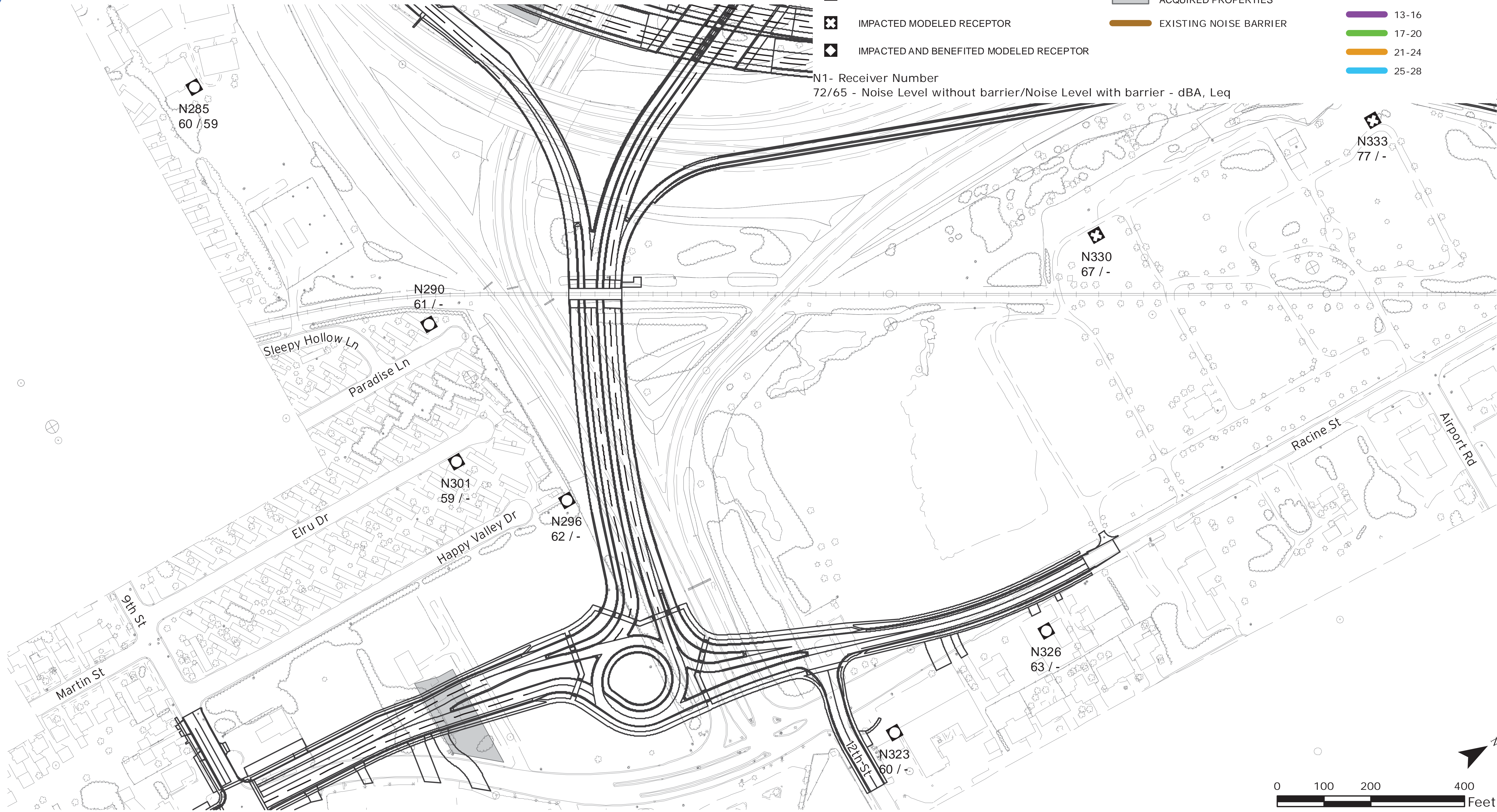
- MODELED RECEPTOR
- IMPACTED MODELED RECEPTOR
- IMPACTED AND BENEFITED MODELED RECEPTOR

- ACQUIRED OR TO BE ACQUIRED PROPERTIES
- EXISTING NOISE BARRIER

**PROPOSED NOISE BARRIER HEIGHTS**

- 9-12
- 13-16
- 17-20
- 21-24
- 25-28

N1- Receiver Number  
72/65 - Noise Level without barrier/Noise Level with barrier - dBA, Leq



**Noise Barrier Heights**

US 10/441 | Winnebago, Outagamie and Calumet County





LEGEND

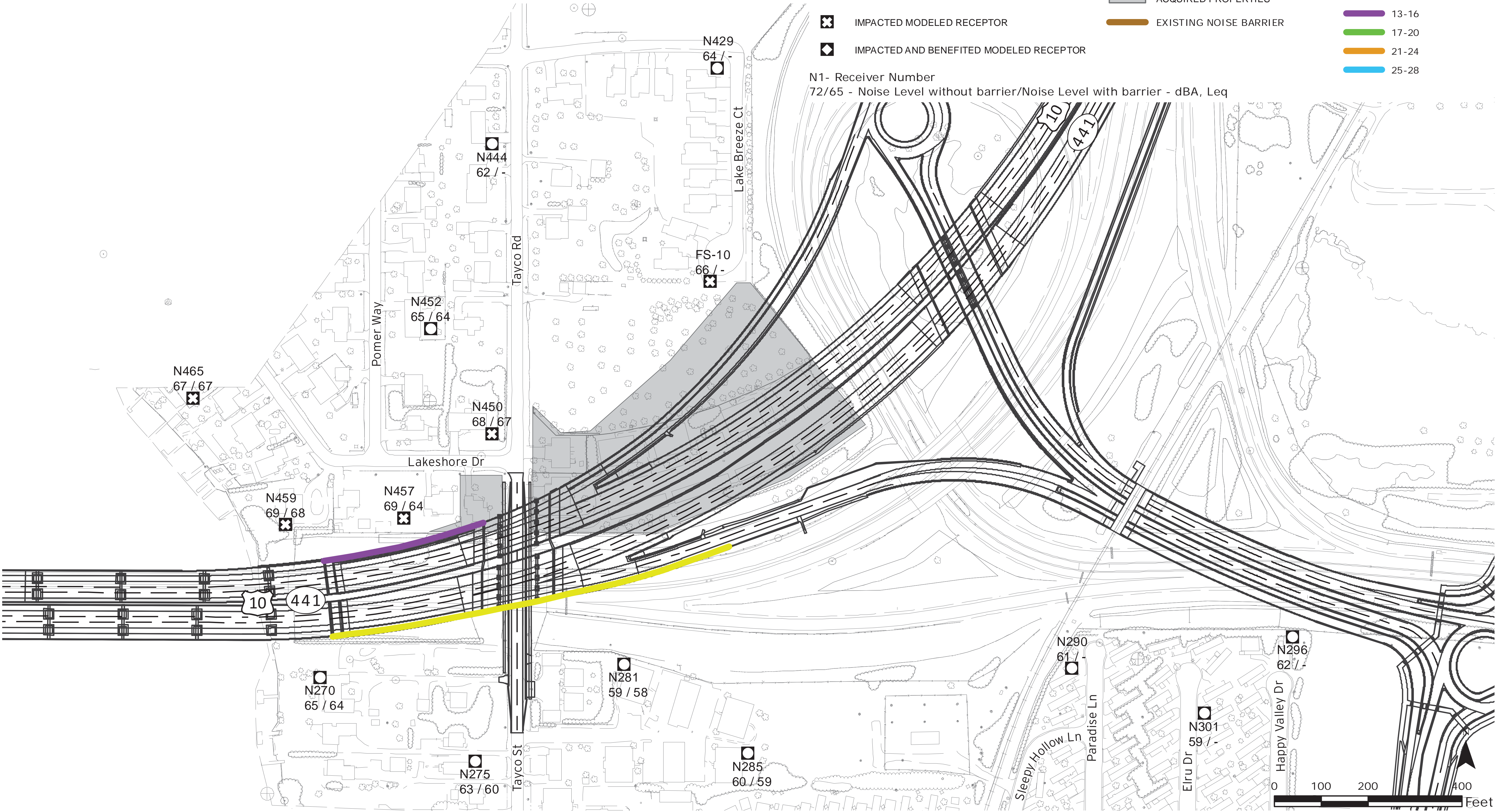
- MODELED RECEPTOR
- IMPACTED MODELED RECEPTOR
- IMPACTED AND BENEFITED MODELED RECEPTOR

- ACQUIRED OR TO BE ACQUIRED PROPERTIES
- EXISTING NOISE BARRIER

PROPOSED NOISE BARRIER HEIGHTS

- 9-12
- 13-16
- 17-20
- 21-24
- 25-28

N1- Receiver Number  
72/65 - Noise Level without barrier/Noise Level with barrier - dBA, Leq



Noise Barrier Heights

US 10/441 | Winnebago, Outagamie and Calumet County