



WELCOME to the WIS 441 TRI-COUNTY PROJECT

Noise Barrier Meetings

Friday, May 15, 2015

Local officials meeting: 7:30–9 a.m.

Brief presentation at 7:45 a.m.

Tuesday, May 19, 2015

Public information meeting: 5–8 p.m.

*Brief presentations at 5:15, 6:15 and 7:15 p.m.
(All presentations are identical.)*

Meeting purpose

The Wisconsin Department of Transportation (WisDOT) is hosting a public involvement meeting to provide adjacent landowners and residents an opportunity to learn about the noise barrier selection process, ask questions and submit their voting ballot and/or comments. WisDOT will continue to hold public involvement meetings throughout the duration of the project to keep you informed about design plans and the construction schedule at key project milestones.

Meeting format

During the public meeting, brief presentations are scheduled at 5:15, 6:15 and 7:15 p.m. Please note all presentations are identical. The presentation will give a basic overview of the noise barrier process, provide voting and commenting instructions, and identify members of the project team that can assist you with your questions. After the presentation, please follow signs to the appropriate table to ask questions and to learn more about the noise barrier near your residence or property.

- Submit your vote and comments
- Replace lost/missing ballots
- Address real estate questions

For specific noise barrier and property questions, please follow signs to project staff who will assist you.

Invited public

WisDOT invited residents and property owners from within 500 feet of eligible noise barriers (see map on next page). The main goal of tonight's meeting is to provide benefited receptors and interested citizens with information about the noise barrier process, ask questions, submit comments and vote. Those eligible to vote will typically live adjacent to or very close to the WIS 441 mainline and are referred to as benefited receptors. See definition of benefited receptor at the right. Please refer to your public meeting invitation letter or see project staff to determine if you're eligible to vote.

HOW TO SUBMIT YOUR VOTE

- Use ballot mailed to you and available at the meeting
- Via email to Scott.Ebel@dot.wi.gov
- Submit ballot at tonight's meeting

WHO QUALIFIES AS A BENEFITED RECEPTOR?

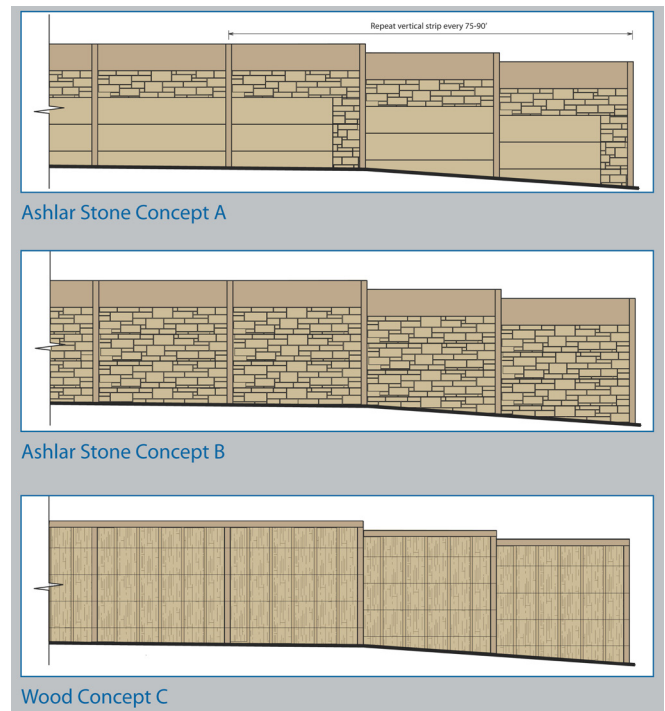
To be eligible to vote on potential noise barrier construction, your residence must be a benefited receptor. A benefited receptor is defined as a residence or common use area receiving a minimum of eight (8) decibels reduction in sound level as a result of the proposed abatement measure.

Submitting comments

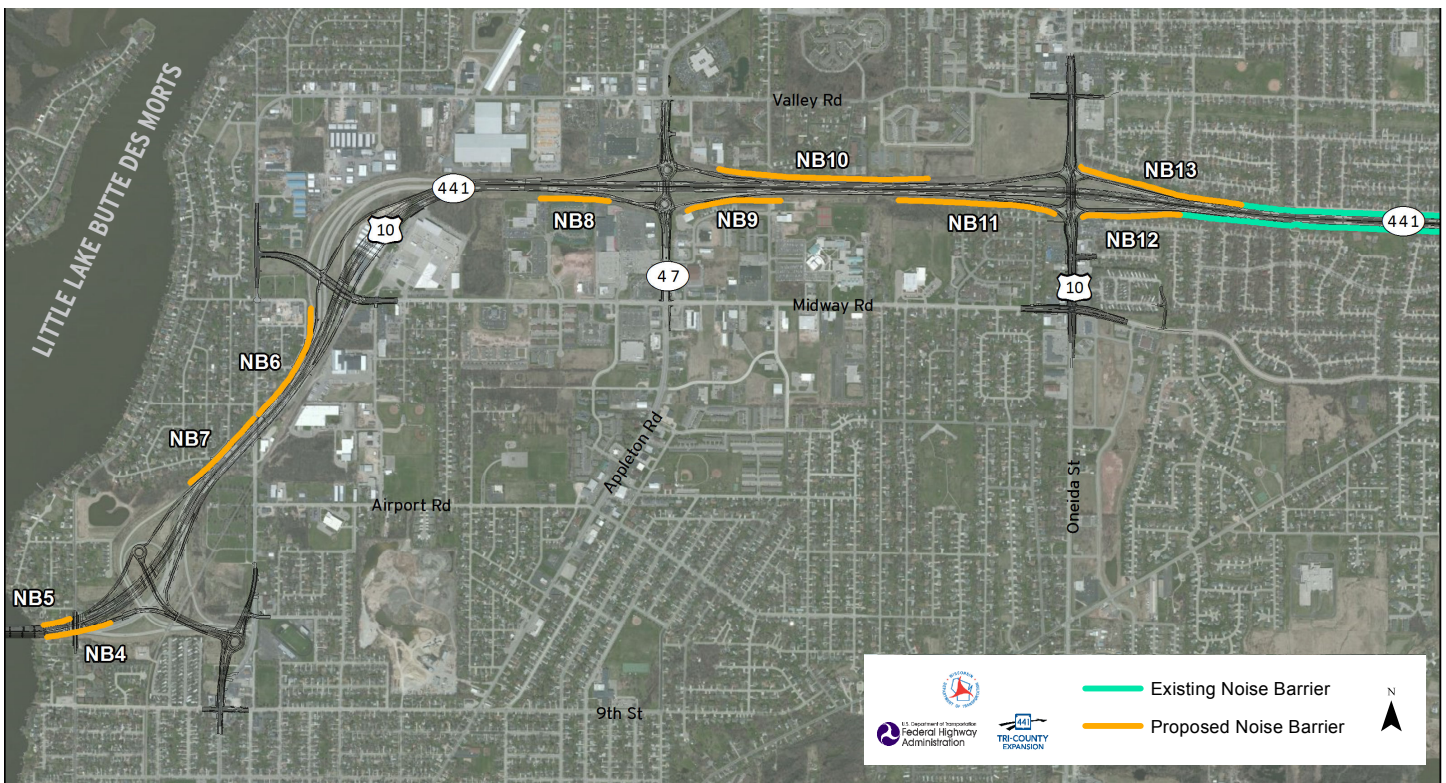
For those who live within 500' of the eligible barriers and are not eligible to vote, please know that your input is important to WisDOT. Please share your thoughts or preferences on the noise barrier treatments shown to the right and note that residential side treatments can vary along the corridor. See project staff at tonight's meeting for comment forms. Please submit your comments by June 22, 2015.

WIS 441 Noise Barriers

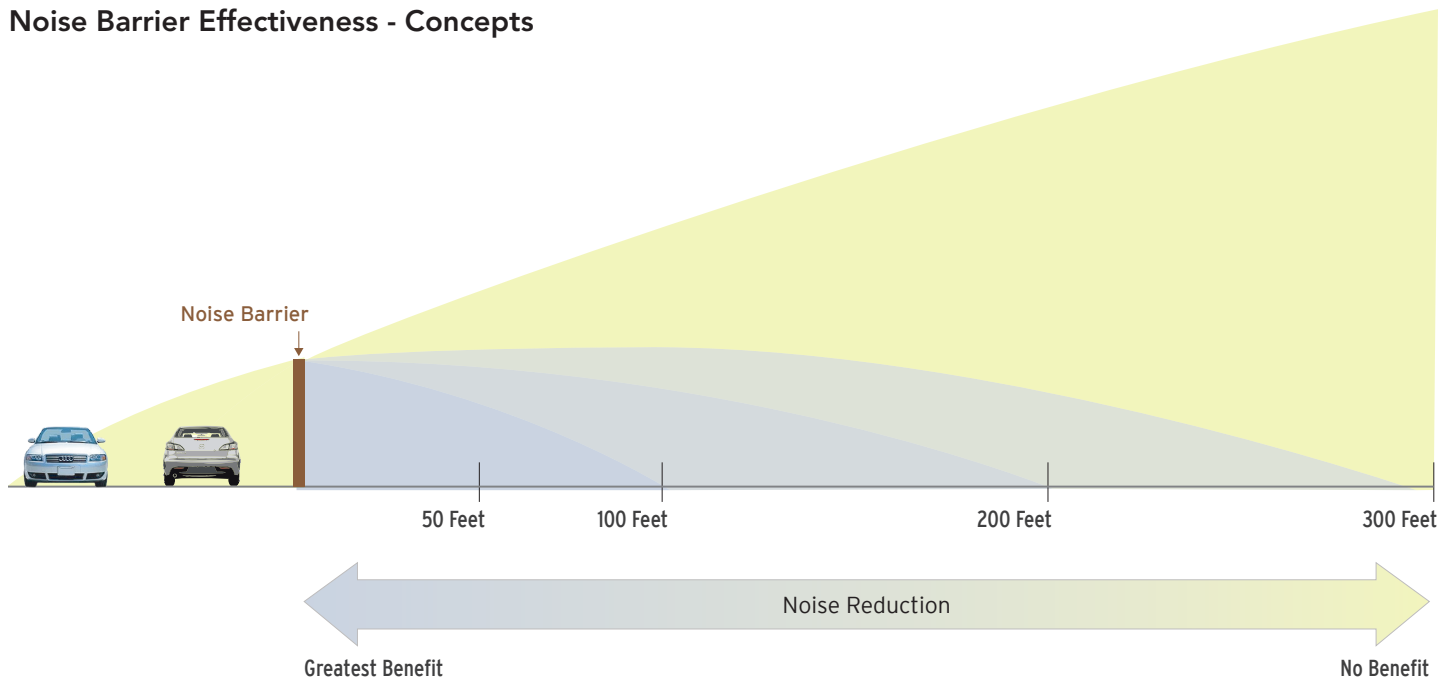
WisDOT analyzed the entire WIS 441 Tri-County sProject area, including modeling 17 potential noise barriers. The map above depicts the ten eligible noise barriers that may be included in the WIS 441 Tri-County reconstruction project (depicted in orange), pending votes by the public. The decision to build a noise barrier at a particular location is determined by votes from the property owners and the residents benefited by the barrier.



WIS 441 Eligible Noise Barriers and Existing Barrier (east of the Little Lake Butte des Morts)



Noise Barrier Effectiveness - Concepts



Overview of noise barrier process

The Noise Level Criteria (NLC) and noise barrier design process are set by WisDOT's *Facilities Development Manual, Chapter 23, Noise*. At the start of a state highway project, WisDOT determines noise impacts and evaluates possible mitigation measures, such as noise barriers.

After careful evaluation and a voting process, WisDOT installs noise barriers along portions of state highways to minimize noise impacts.

Decision

The decision to build a noise barrier at a particular location is determined by a vote of support from a simple majority of all ballots cast by the property owners and the residents benefited by the barrier (benefited receptors).

Noise barrier effectiveness

Effectiveness depends on the distance between the impacted receptor and the barrier. For areas located directly behind a barrier providing an eight (8) dB reduction, the noise level will be perceived as being cut in half. This benefit decreases as a listener moves farther away from the barrier and is negligible at distances greater than 500 feet.

SPECIFIC NOISE BARRIER INFORMATION

- LEFT side of the room (as you enter): Tayco Road, Racine Road and Midway Road (Noise barriers 4, 5, 6 and 7)
- RIGHT side of the room (as you enter): Appleton Road and Oneida Street (Noise barriers 8, 9, 10, 11, 12 and 13)

Public involvement meetings

WisDOT will continue to hold public involvement and business meetings at project milestones throughout the design and construction phases of the WIS 441 Tri-County Project.

Project website

Projects.511wi.gov/wis441 is the official WIS 441 Project website. The site has project details and closure information and is an available resource for the public and businesses to learn more about the project including interchange improvements and special project features. Meeting exhibits, handouts, presentations and other resources will also be available on the project website following public involvement meetings.

Join the e-mail contact list

If you would like to receive project updates and notices of future meetings via e-mail, please provide your e-mail address on the sign-in sheet for today's meeting or submit your e-mail address to Melissa Kok at Melissa.Kok@dot.wi.gov.

WIS 441 project construction office

The WIS 441 project construction office is used for workspace and public meetings, and as a central point-of-contact for public information regarding construction on the project. The office is located at W6214 Aerotech Drive in Appleton, and can be reached by telephone at (920) 832-1777.

Contact information

For additional information, please contact one of the following staff members:

Scott Ebel, PE

WIS 441 Project Manager
(920) 492-2240
Scott.Ebel@dot.wi.gov

Brown County Project Office
1940 W. Mason Street
Green Bay, WI 54303

Mark Kantola

US 41/WIS 441 Project
Communication Manager
(920) 492-4153
Mark.Kantola@dot.wi.gov

WisDOT Northeast Region
944 Vanderperren Way
Green Bay, WI 54304

Kurt Peters

WIS 441 Project
Construction Manager
(920) 492-2213
Kurt.Peters@dot.wi.gov

WIS 441 Project Office
W6214 Aerotech Drive
Appleton, WI 54914

STAY CONNECTED

Get breaking traffic news and tomorrow's construction delays.

Find us on Facebook: facebook.com/WIS441I41News

Follow us on Twitter: [@WIS441I41News](https://twitter.com/WIS441I41News)



511 Wisconsin provides you with free real-time traffic conditions. Set your own personalized travel profiles to receive travel time and alter information. Dial **511** or visit www.511wi.gov.

