



Division of Transportation  
System Development  
WIS 441 Tri-County Project  
Brown County Office  
1940 West Mason Street  
Green Bay, WI 54303



Scott Walker, Governor  
Mark Gottlieb, P.E., Secretary  
Internet web site: [www.dot.wisconsin.gov](http://www.dot.wisconsin.gov)

Telephone: (920)492-2222  
Facsimile (FAX): (920)492-5807  
E-mail: [ner.dtsd@dot.wi.gov](mailto:ner.dtsd@dot.wi.gov)

# WELCOME to the WIS 441 TRI-COUNTY PROJECT Racine Rd (County P) and 12<sup>th</sup> Street intersection PUBLIC INVOLVEMENT MEETING

Town of Menasha, 2000 Municipal Drive, Menasha  
January 27, 2015 from 5 to 6:30 p.m.



## MEETING PURPOSE

The Wisconsin Department of Transportation (WisDOT) is hosting a public involvement meeting for the WIS 441 Tri-County Project. This meeting is a follow up to the April 25 and June 3, 2014 meetings. The purpose of the meeting is to present the refined design alternative for the County P ramp intersection and provide information on a number of topics including:

- Feedback and concerns that led to design refinements during design phase
- Impacts to County P, 12th Street, and residential/business driveway access
- Design highlights and improvements

WisDOT will continue to hold public involvement meetings throughout the duration of the project to keep you informed about design plans and the construction schedule at key project milestones. See back page for more information on this spring's corridor-wide public involvement meeting scheduled for March 2, 2015.

## MEETING FORMAT

Today's meeting will run from 5 to 6:30 p.m. A presentation will begin at 5:15 p.m. Please view the current design plans and feel free to speak to project staff.

## PROJECT SCHEDULE

### Racine Rd (County P) and 12th Street intersection

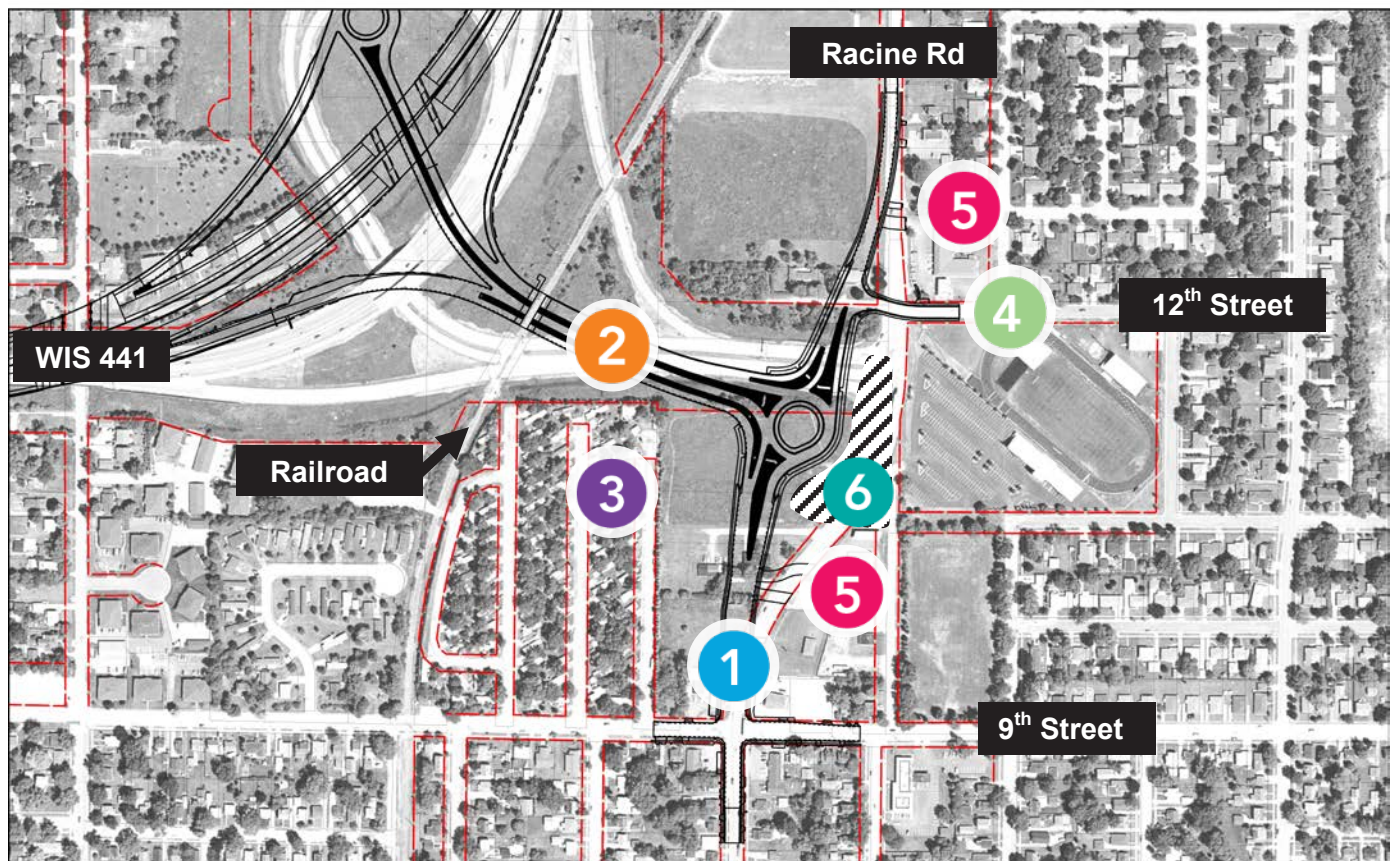
Construction is scheduled to begin at the Racine Rd (County P) and 12<sup>th</sup> Street intersection in the spring of 2016. The construction will require some CLOSURES at the intersection. WisDOT will follow up with residents, businesses and officials to communicate traffic impacts prior to construction.

### Corridor-wide project schedule

Function	2012	2013	2014	2015	2016	2017	2018	2019
Design								
Real Estate								
Utilities								
Construction								

## INTERSECTION IMPROVEMENTS

### Racine Rd (County P) and 12th Street intersection



WisDOT refined the design at the Racine Rd (County P) and 12th Street intersection following the two PIMs in 2014 and individual meetings with businesses, residents and officials. Highlights of the refined design include:

- 1** Improved alignment that minimizes curves and enhances vehicle sight distance along County P
- 2** Increased weave distance for eastbound and westbound traffic between the roundabout and the WIS 441 ramps
- 3** Revised alignment will have no mobile home park property impacts and minimal noise impacts
- 4** Allows full access to 12<sup>th</sup> Street and a clear line of sight for approaching traffic
- 5** Maintains full access to businesses on east side of Racine Road
- 6** Creates space for aesthetic enhancement



## 2015 COUNTY P (Racine Road) INTERCHANGE CONSTRUCTION



WisDOT will begin the reconstruction of the County P (Racine Road) interchange in April 2015. While construction at the Racine Rd (County P) and 12th Street intersection won't begin until 2016, there will be traffic impacts at the County P interchange in 2015. A summary of 2015 work and impacts follows:

### **Project timeframe: April 2015 - summer 2018**

The following closures at the Racine Road interchange will begin in 2015 while the interchange is reconstructed:

- Westbound US 10/southbound WIS 441 entrance ramp from Racine Road will CLOSE long-term between summer 2015 - spring 2018
- Westbound US 10/southbound WIS 441 exit ramp to Racine Road will CLOSE between summer 2015 - fall 2016
- Eastbound US 10/northbound WIS 441 entrance ramp from Racine Road will CLOSE between fall 2015 - fall 2016

Drivers can access US 10/WIS 441 using Midway Road. WisDOT will install temporary traffic signals (spring 2015 - summer 2018) at the Racine Road/Midway Road intersection and at the Midway Road/US 10/WIS 441 ramps to manage traffic during the Racine Road and WIS 47 ramp closures.

Please also expect intermittent lane restrictions along the US 10/WIS 441 mainline beginning summer 2015. There will be additional CLOSURES in 2016 at the interchange as well as the Racine Rd (County P) and 12th Street intersection. WisDOT will follow up with residents, businesses and officials to communicate traffic impacts prior to construction.

## PUBLIC INVOLVEMENT MEETINGS

WisDOT will continue to hold public involvement and business meetings at project milestones throughout the design and construction phases of the WIS 441 Tri-County Project. WisDOT will host a WIS 441 corridor-wide public involvement meeting at 5 p.m. on March 2, 2015 at the Butte des Morts Elementary School located at 501 Tayco Street, Menasha, WI. You should receive an invitation in February.

## PROJECT WEBSITE

The WIS 441 Tri-County Project website, [www.US41wisconsin.gov/wis441](http://www.US41wisconsin.gov/wis441), is an available resource for the public and businesses to learn more about the project including interchange improvements and special project features. Meeting exhibits, handouts, presentations and other resources will also be available on the project website following public involvement meetings.

## JOIN THE E-MAIL CONTACT LIST

WisDOT will continue to hold public involvement meetings throughout the project's duration to keep the public and businesses informed. If you would like to receive project updates and notices of future meetings via e-mail, please provide your e-mail address on the sign-in sheet for today's meeting or submit your e-mail address to Melissa Kok at [Melissa.Kok@dot.wi.gov](mailto:Melissa.Kok@dot.wi.gov).

## CONTACT US

### Scott Ebel, P.E.

WIS 441 Project Manager

Phone: (920) 492-2240

[Scott.Ebel@dot.wi.gov](mailto:Scott.Ebel@dot.wi.gov)

Mr. Ebel can be reached by mail at:

Brown County Project Office

1940 W. Mason Street Green Bay, WI 54303

### Mark Kantola

US 41/WIS 441 Communications Manager

Phone: (920) 492-4153

[Mark.Kantola@dot.wi.gov](mailto:Mark.Kantola@dot.wi.gov)

Mr. Kantola can be reached by mail at:

944 Vanderperren Way

Green Bay, WI 54304

**FOR GENERAL  
PROJECT INFORMATION**



Find us online at:  
[www.US41wisconsin.gov/wis441](http://www.US41wisconsin.gov/wis441)