



TRI-COUNTY EXPANSION



U.S. Department of Transportation
**Federal Highway
Administration**

WIS 441 Tri-County Project

Business Meeting

Feb 28, 2018

Presentation Outline

- Introductions
- Design and schedule updates
- Construction update
- Other area projects
- Work zone safety
- Community outreach and business resources

Introductions

- WIS 441 Tri-County Project team
 - Will Dorsey, Northeast Region Director
 - Tom Buchholz, Project Development Manager
 - Chad DeGrave, Design Supervisor
 - Scott Ebel, Design Project Manager
 - Tammy Rabe, Construction Supervisor
 - Kurt Peters, Construction Project Manager
 - Melissa Kok, Northeast Region Assistant Communication Manager

Project Schedule

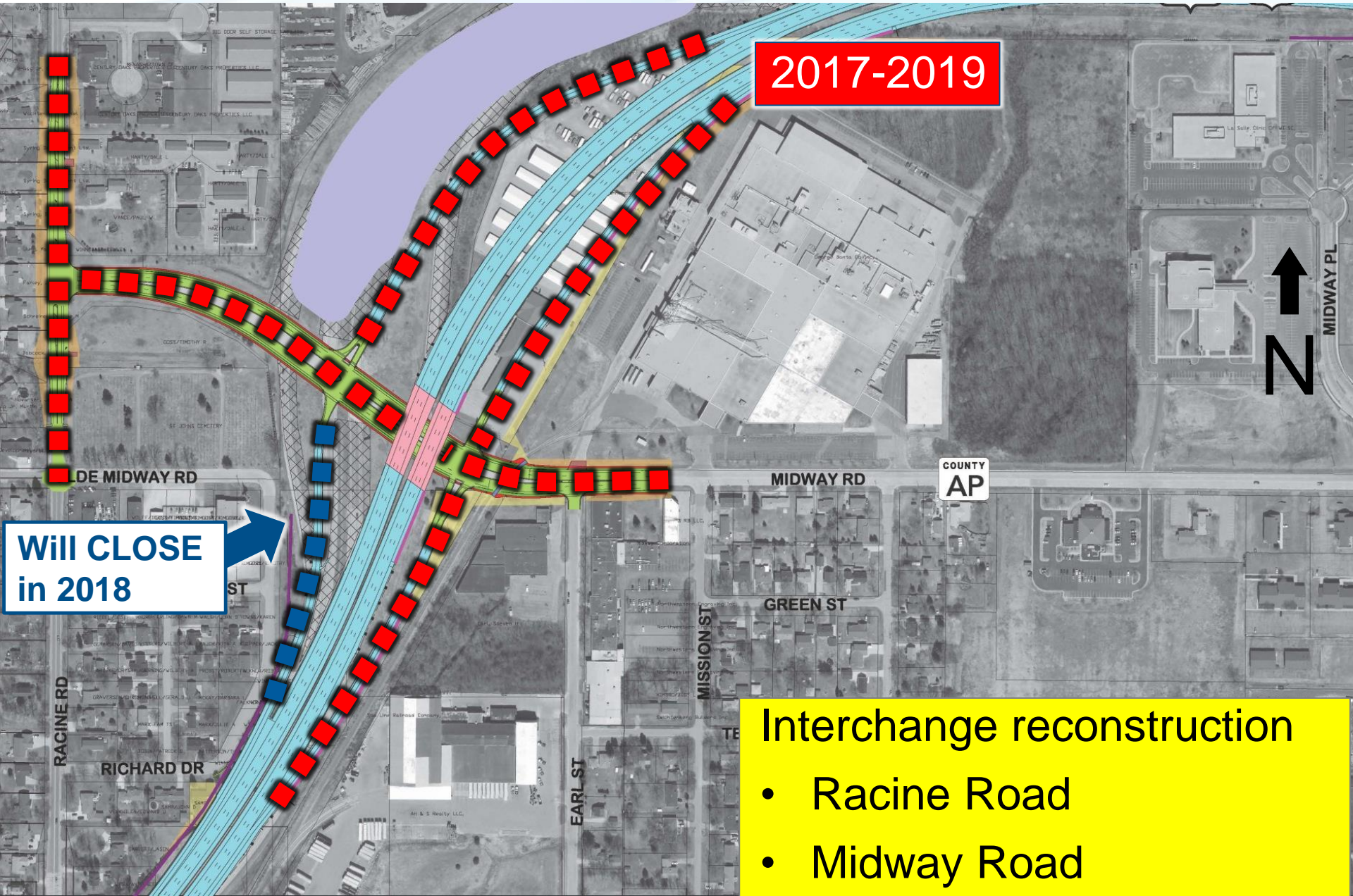
Function	2012	2013	2014	2015	2016	2017	2018	2019
Design								
Real Estate								
Utilities								
Construction								

Design Updates



- 5 interchanges
- 6 miles of mainline
- Second LLBDM bridge
- Intersection reconstruction

County AP/Midway Rd Interchange



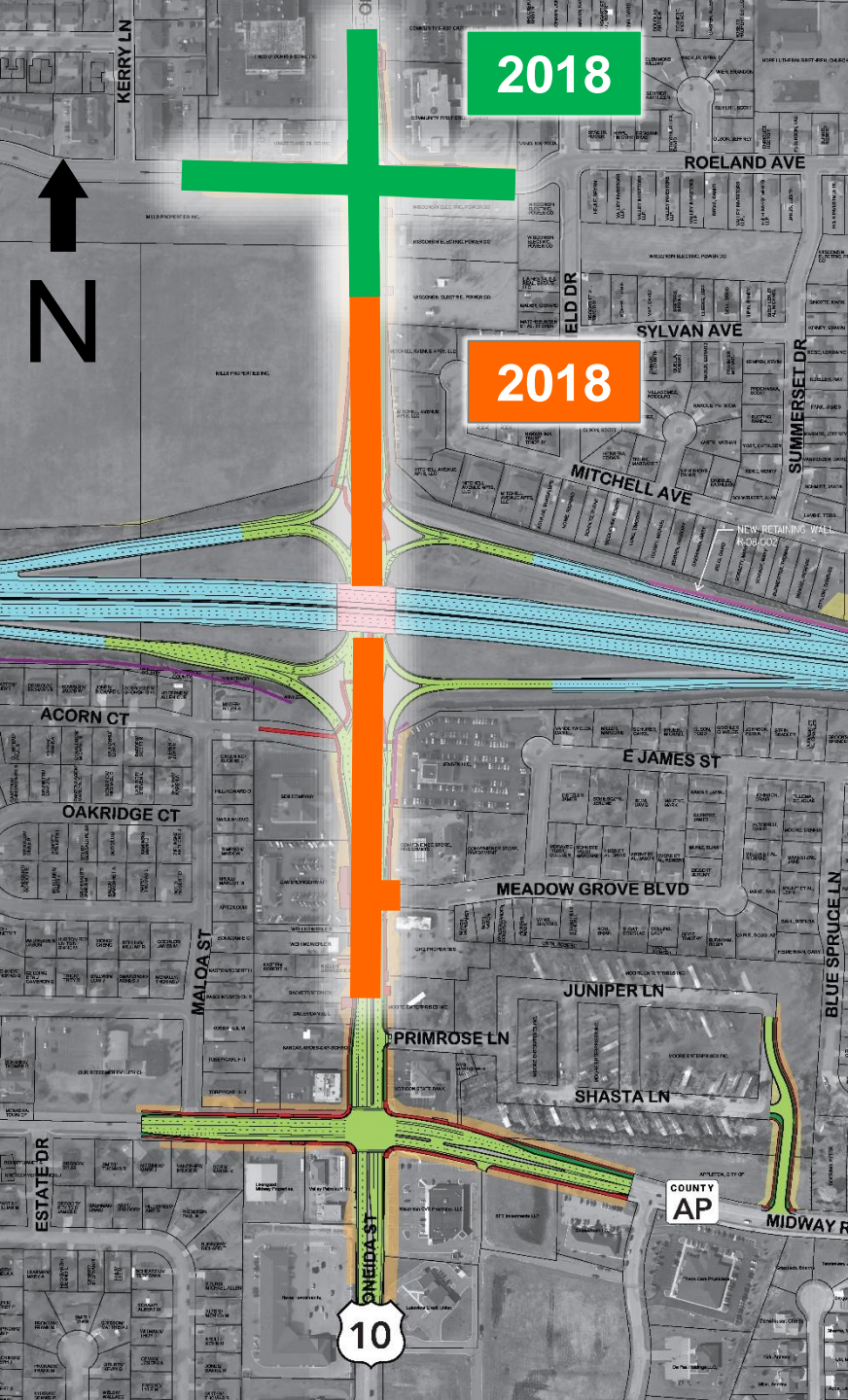
US 10/Oneida St Interchange Ramps and WIS 441 Mainline

- Reconstruct US 10/Oneida St interchange ramps

- Expand mainline on existing alignment

2018

2019



US 10/Oneida St Interchange

- Oneida Street
 - Diverging Diamond interchange
 - Reconstruct Oneida St from Valley Rd to Midway Rd
- Oneida St/Valley Rd intersection
 - Improve to handle additional traffic
 - Minimize construction impacts during interchange closure

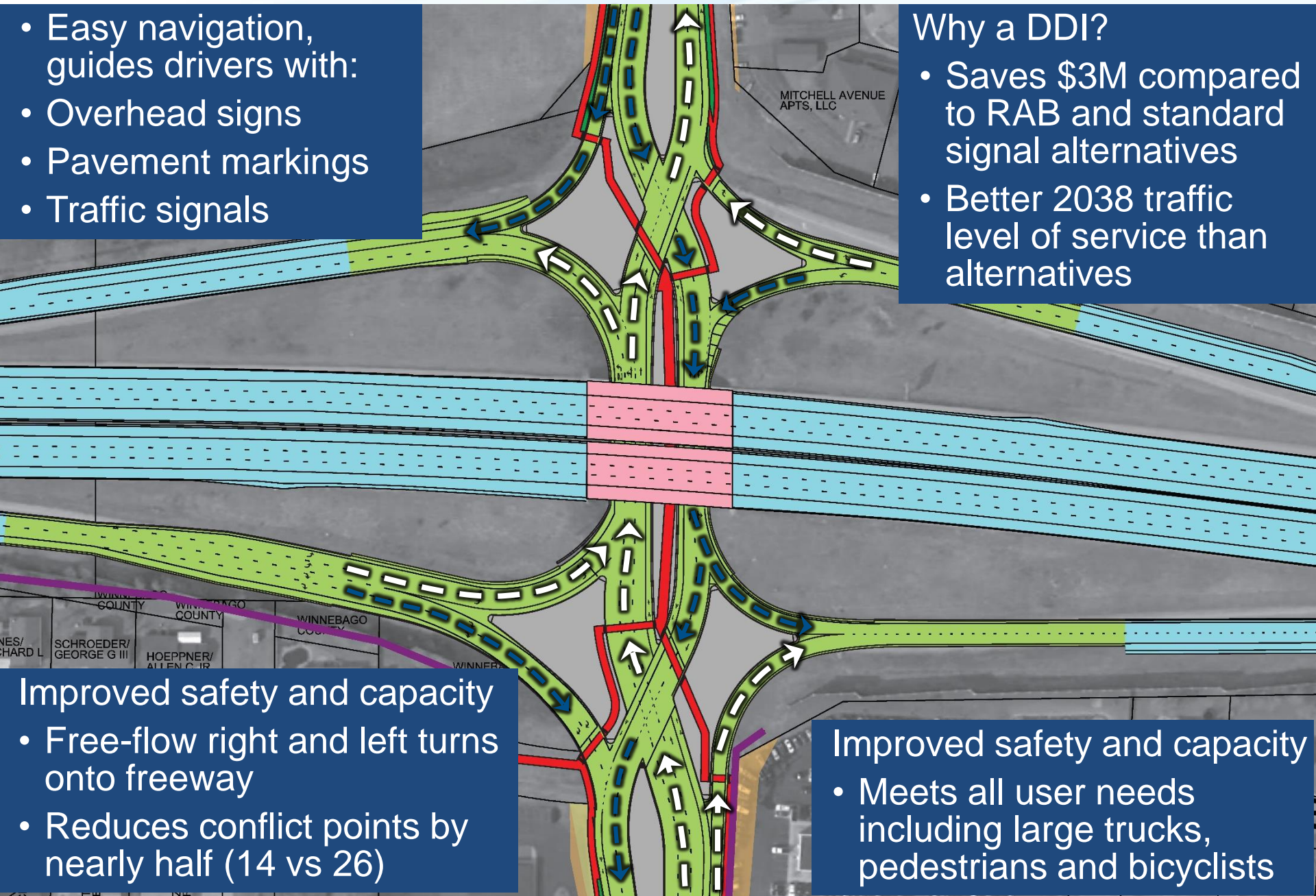


Diverging Diamond Interchange

- Easy navigation, guides drivers with:
- Overhead signs
- Pavement markings
- Traffic signals

Why a DDI?

- Saves \$3M compared to RAB and standard signal alternatives
- Better 2038 traffic level of service than alternatives



Improved safety and capacity

- Free-flow right and left turns onto freeway
- Reduces conflict points by nearly half (14 vs 26)

Improved safety and capacity

- Meets all user needs including large trucks, pedestrians and bicyclists

2018 Construction Updates



- I-41 System interchange
- LLBDM crossing
- Midway Road interchange
- Oneida Street Interchange

I-41/US10 Interchange



Final interchange project

- LET December 2016
- Complete by fall 2018

- Reconstruct I-41/ WIS 441 system interchange
- Free-flow movements all directions
- Freeway split for US 10 WB and WIS 441 SB

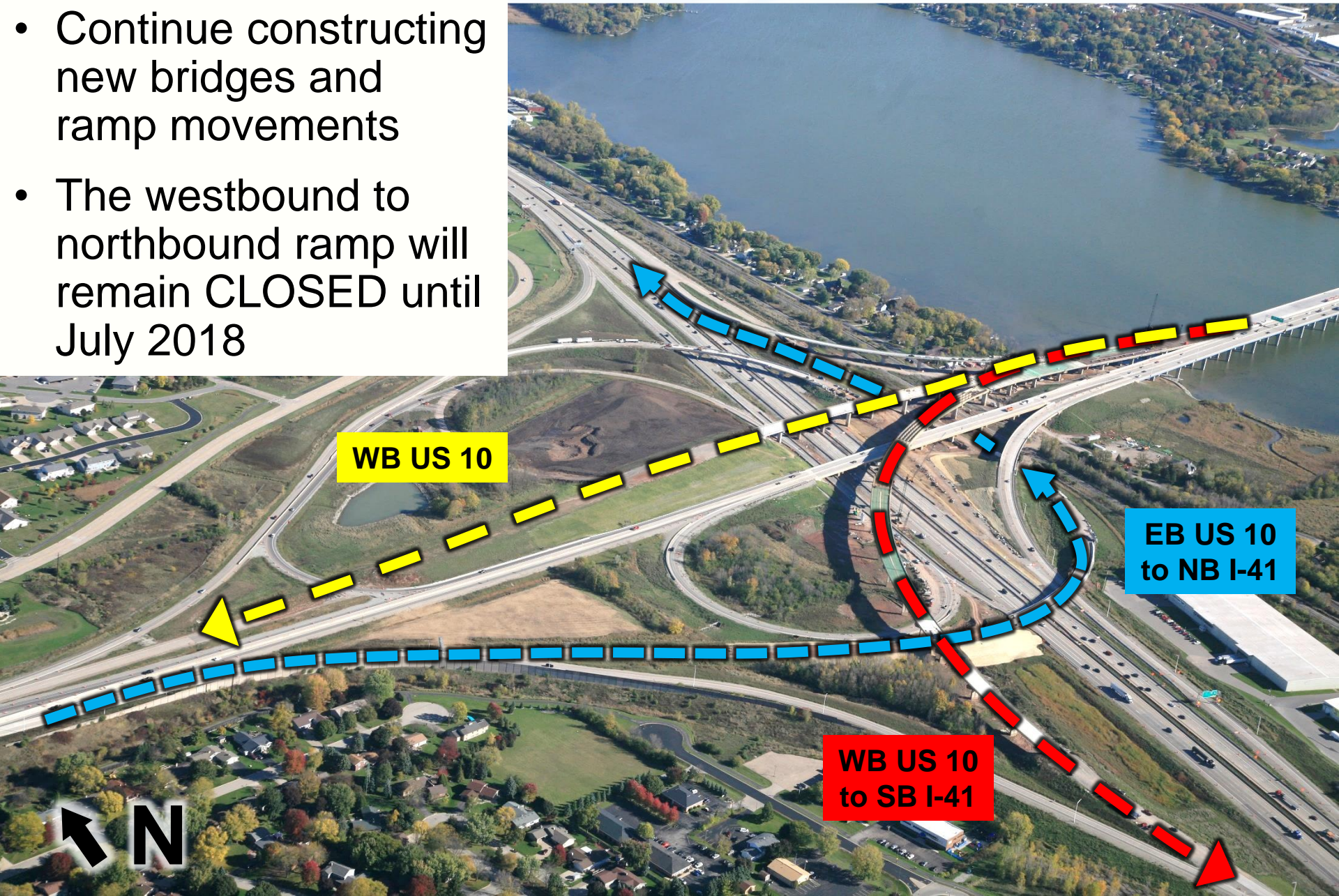
Gawk Screens

- Will be installed along mainline I-41 in March
- Improve safety, protect workers and keep traffic moving through construction zone
- Used on the Beltline in Dane County

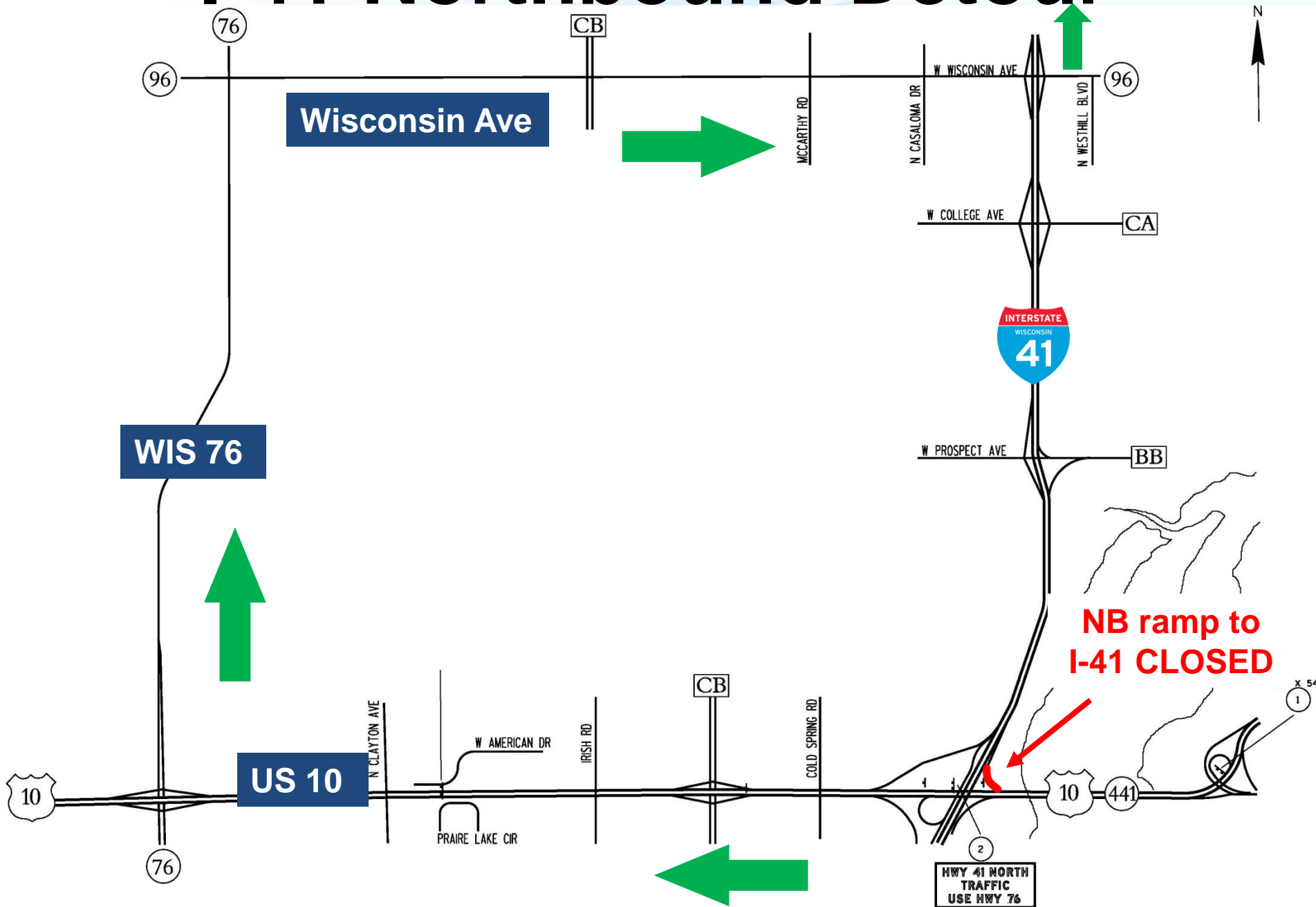


2018 Construction

- Continue constructing new bridges and ramp movements
- The westbound to northbound ramp will remain CLOSED until July 2018



I-41 Northbound Detour



I-41/US 10 Flyover Bridge



↑ N

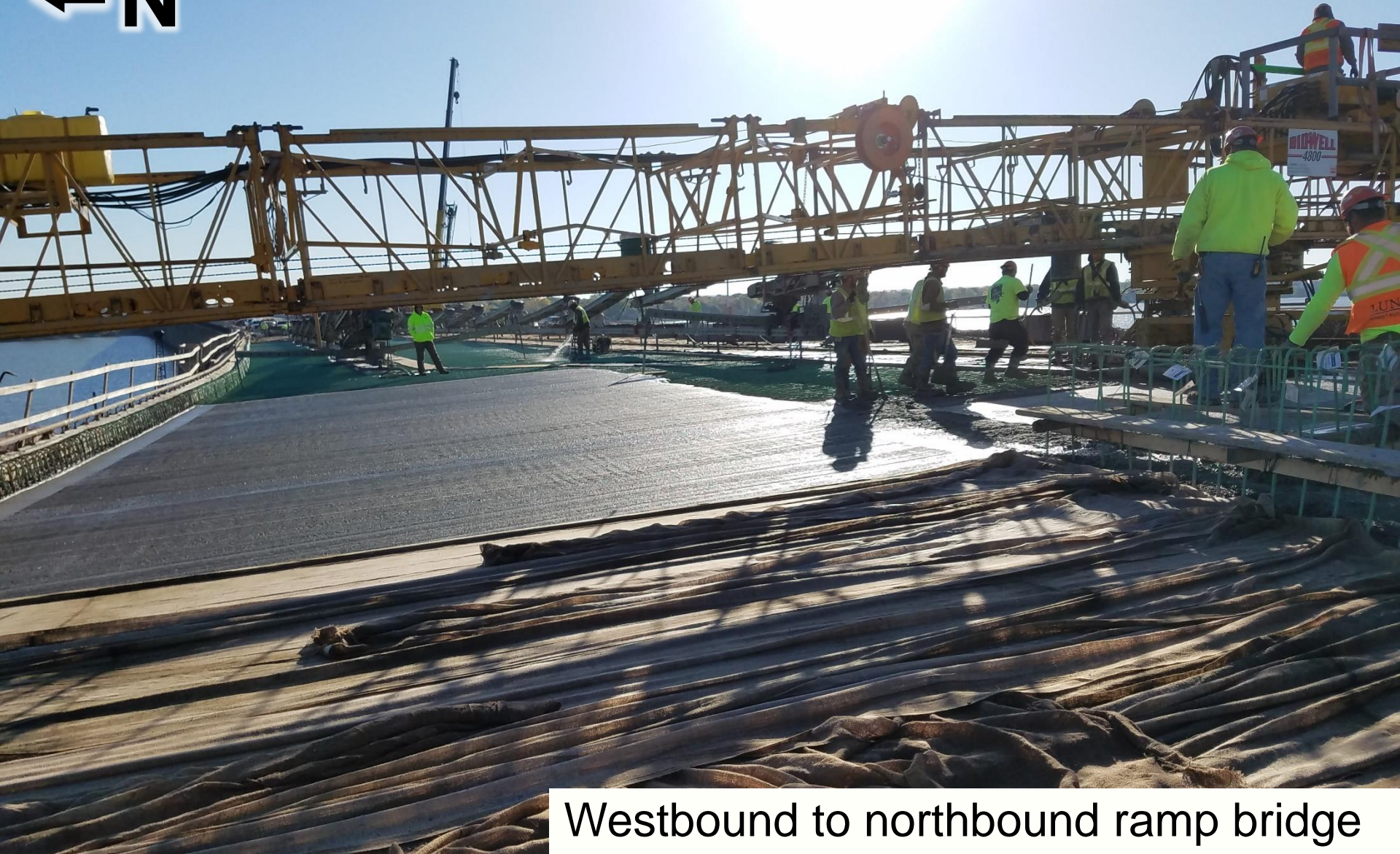
Westbound to southbound flyover structure

Restore Ramp Movements



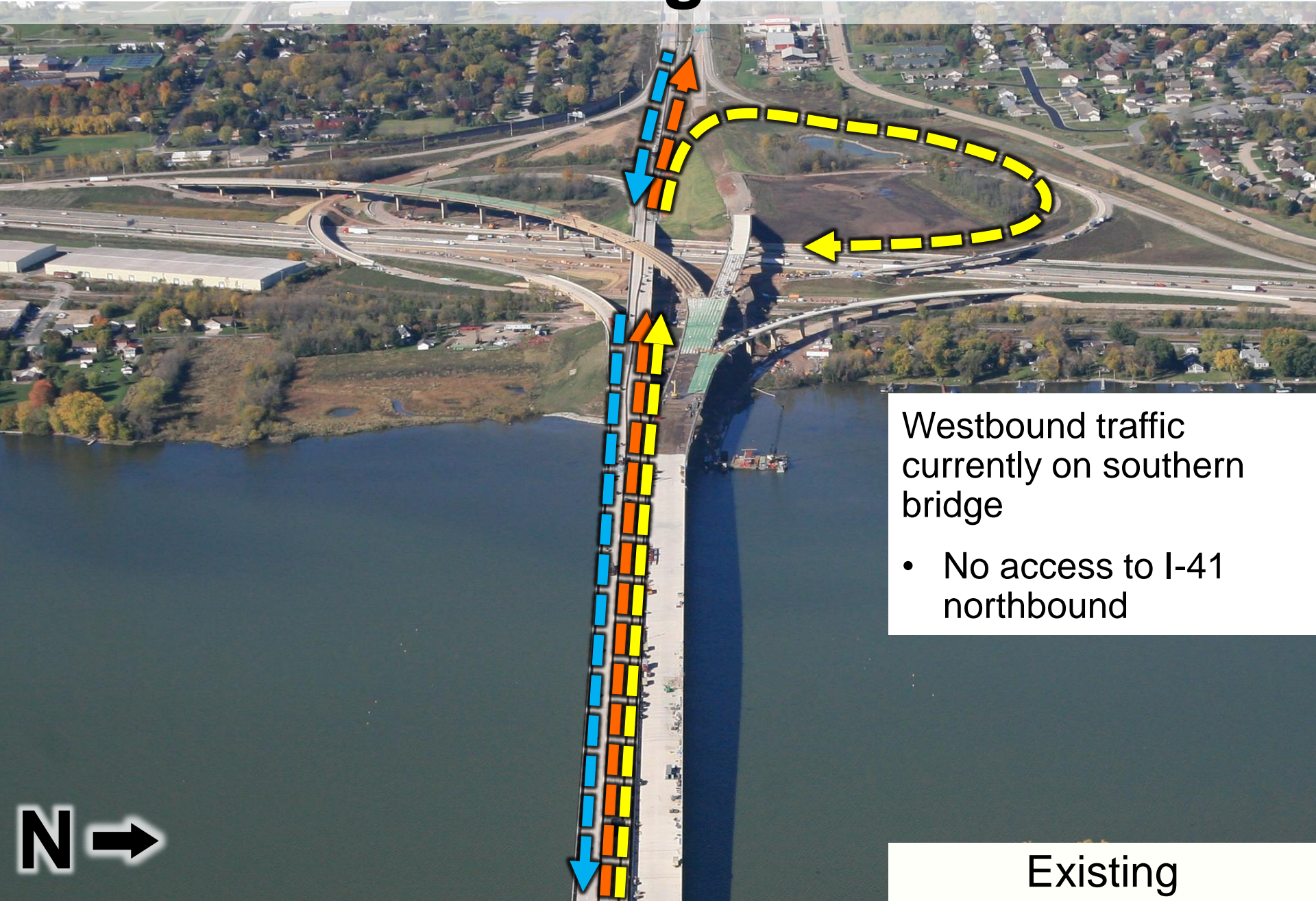
LLBDM Crossing

← N



Westbound to northbound ramp bridge

LLBDM Crossing Traffic Switch



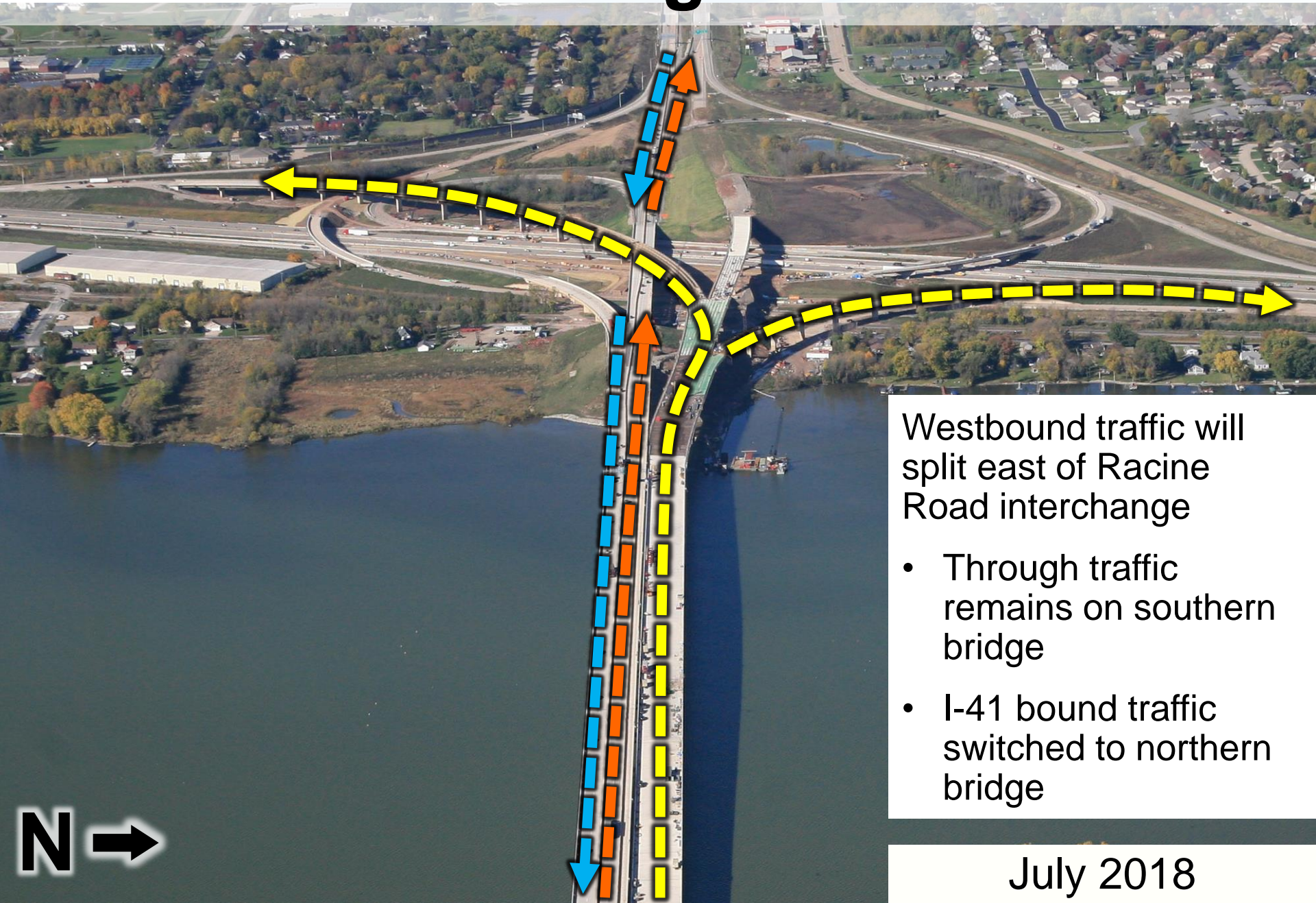
Westbound traffic
currently on southern
bridge

- No access to I-41
northbound



Existing

LLBDM Crossing Traffic Switch

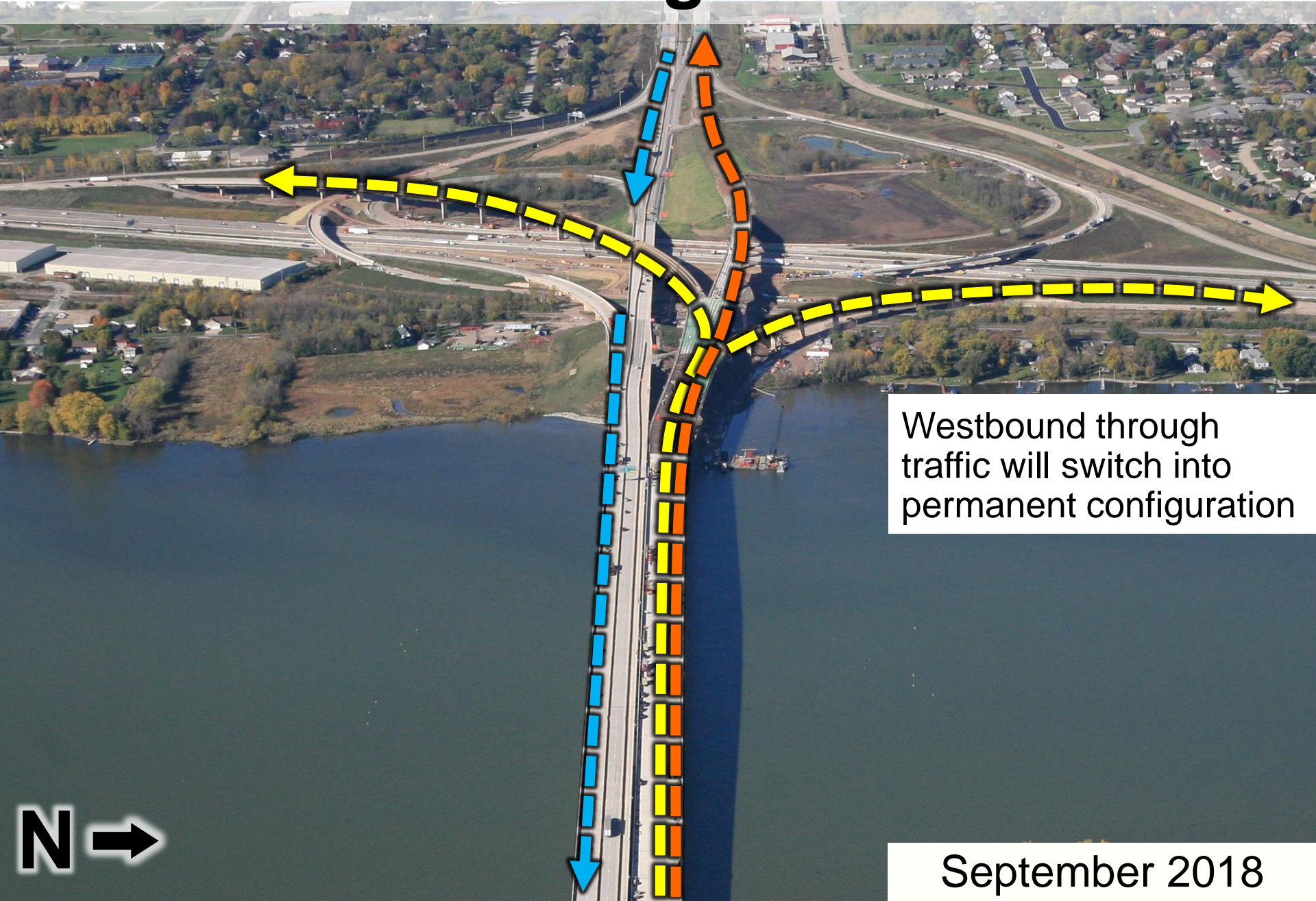


Westbound traffic will split east of Racine Road interchange

- Through traffic remains on southern bridge
- I-41 bound traffic switched to northern bridge

July 2018

LLBDM Crossing Traffic Switch



Westbound through traffic will switch into permanent configuration



September 2018

Racine Road Interchange

WB exit-ramp will be
closed 1 month
spring / summer 2019

WB on-ramp will
remain closed until
summer 2018

Tayco Rd closed
for reconstruction

Tayco Rd





Noise panel installation along Racine westbound exit ramp

County AP/Midway Rd Interchange

Midway Road and Racine Road
Road
CLOSURES in
summer 2019

CLOSED
July 2017 to
summer 2019

Racine Rd

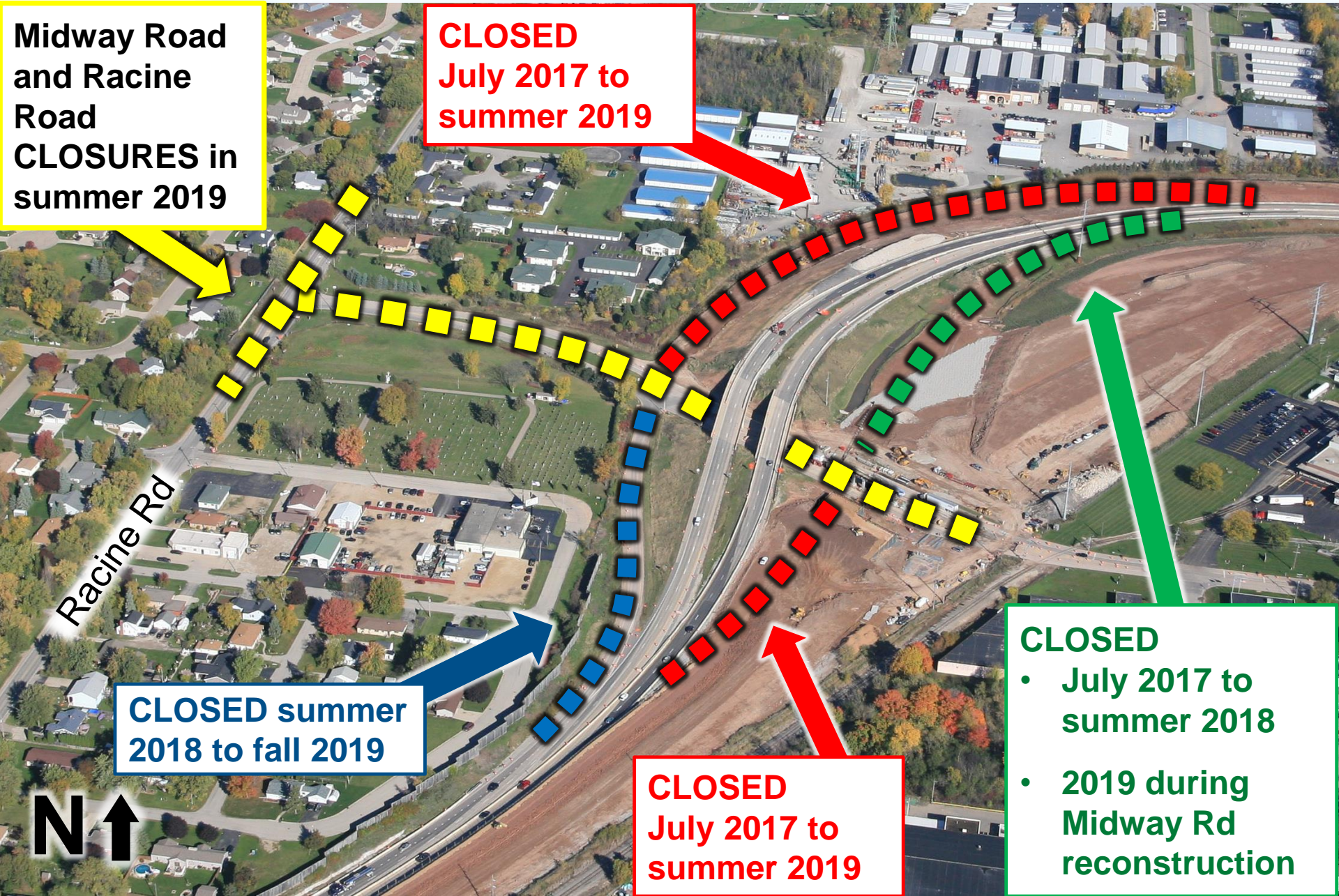
CLOSED summer
2018 to fall 2019

N ↑

CLOSED
July 2017 to
summer 2019

CLOSED

- July 2017 to summer 2018
- 2019 during Midway Rd reconstruction

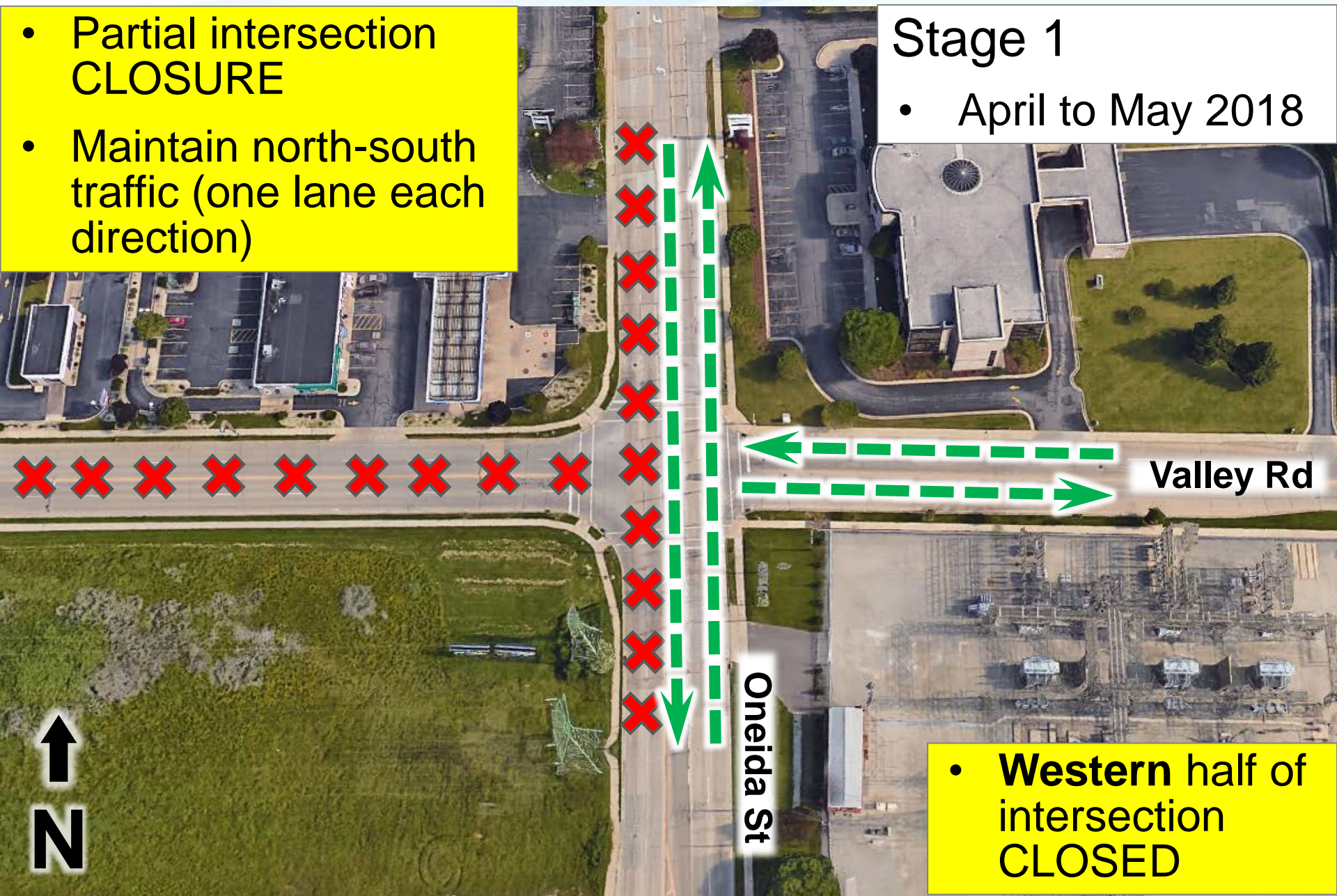


Oneida St & Valley Rd Intersection

- Partial intersection CLOSURE
- Maintain north-south traffic (one lane each direction)

Stage 1

- April to May 2018



Valley Rd

Oneida St

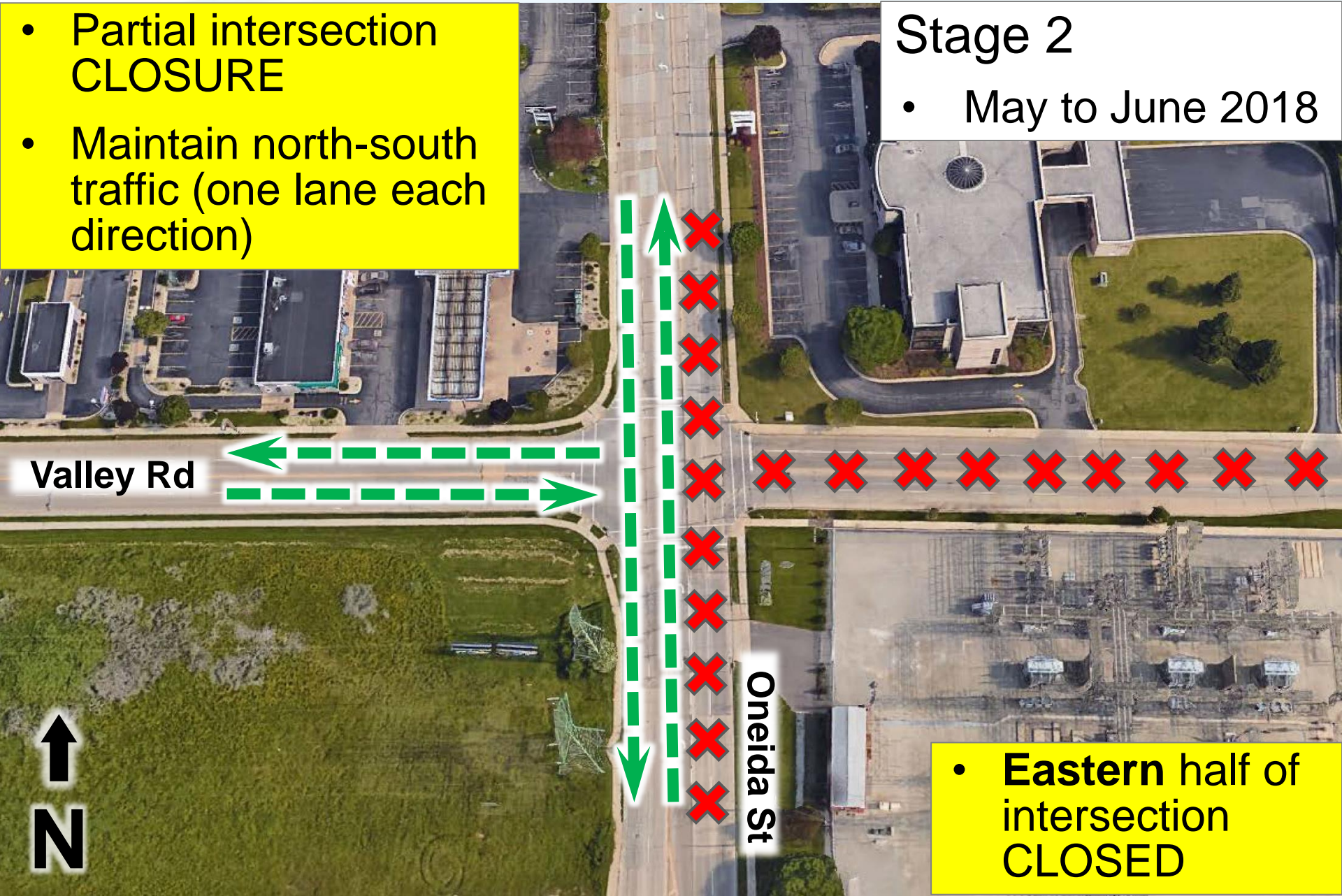
- **Western** half of intersection CLOSED

Oneida St & Valley Rd Intersection

- Partial intersection CLOSURE
- Maintain north-south traffic (one lane each direction)

Stage 2

- May to June 2018

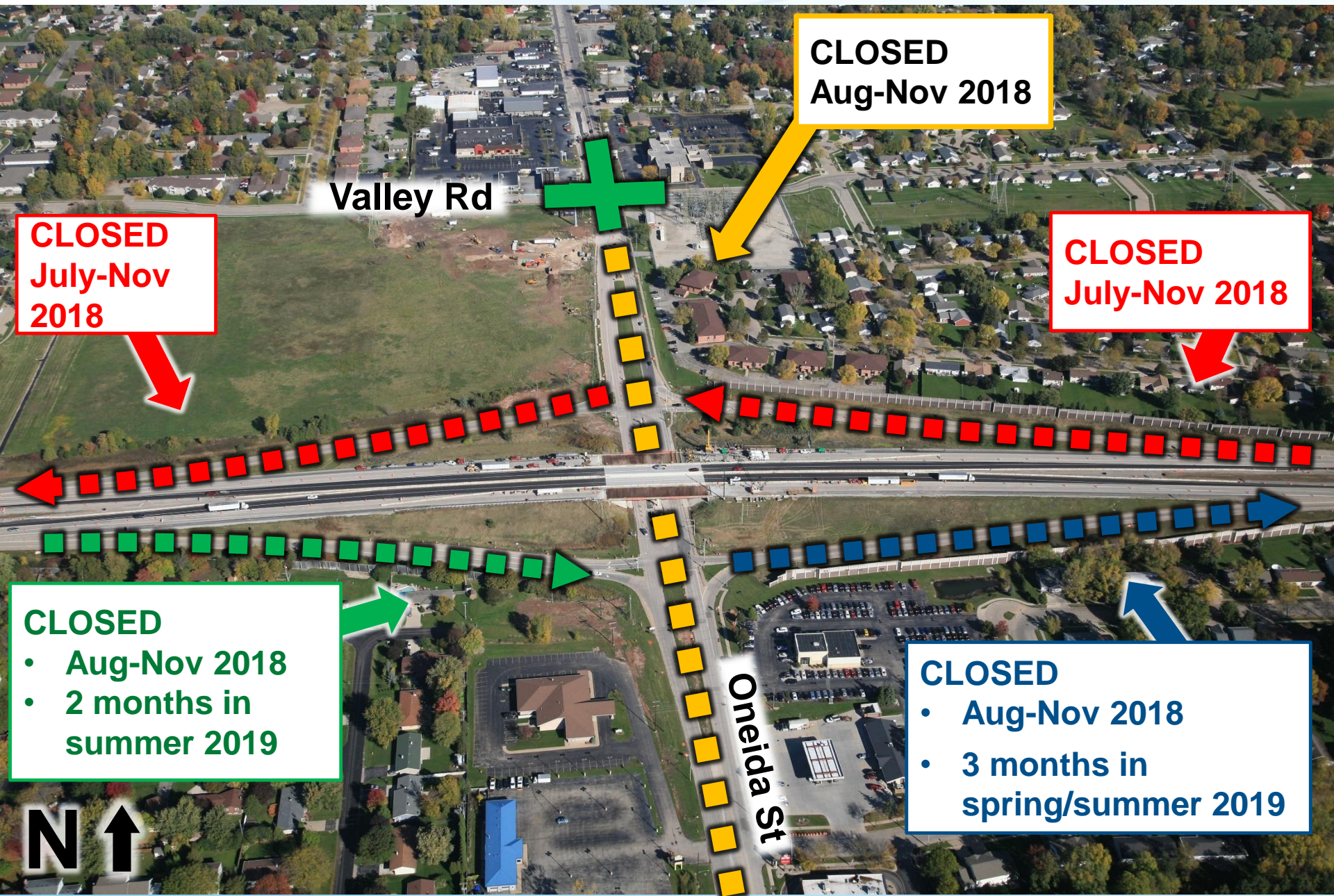


Valley Rd

Oneida St

- Eastern half of intersection CLOSED

Oneida Street Interchange



CLOSED
July-Nov
2018

CLOSED
Aug-Nov 2018

CLOSED
July-Nov 2018

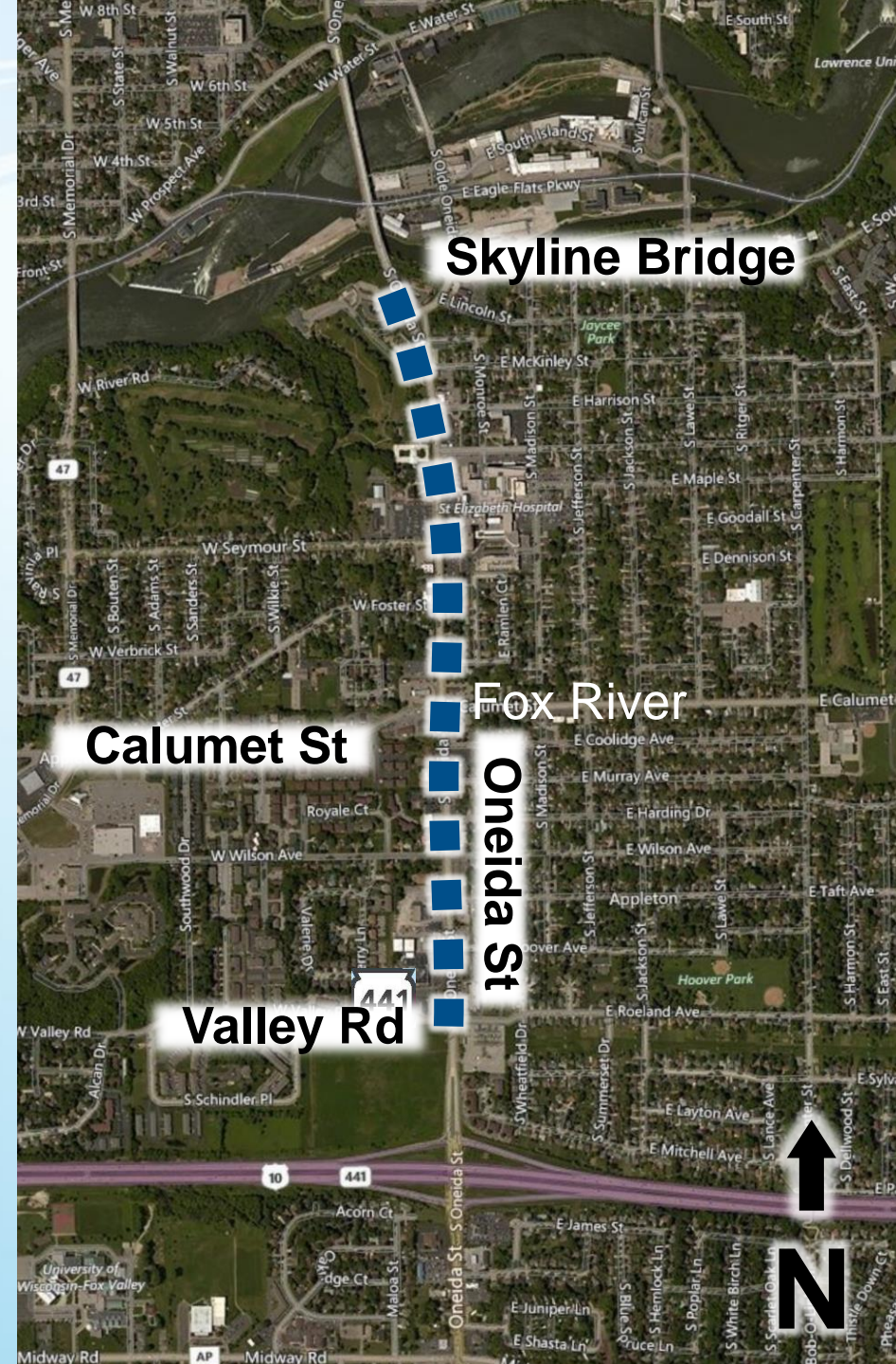
CLOSED
• Aug-Nov 2018
• 2 months in
summer 2019

CLOSED
• Aug-Nov 2018
• 3 months in
spring/summer 2019

N ↑

Other work in area

- City of Appleton
 - Roeland/Valley Road to Skyline bridge
 - Reconstruction of concrete pavement
 - April to Nov 2018
- Coordinated with WIS 441 project



Business Resources

'In this together' kit

- Partnership with businesses
- Tools to maintain connection with customers
- Print ad templates
- Web banner ads
- Web site button



State of Wisconsin
Department of Transportation

ONLINE SERVICES

DMV

DOING BUSINESS

TRAVEL

SAFETY

PROJECTS AND STUDIES

ABOUT WISDOT

Search Wisconsin DOT



In This Together

In This Together

Workbook

Case studies

Promotional samples

WisDOT recognizes businesses located in work zones have special needs. It's critical that customers have access to businesses and that they continue to visit them, regardless of any road work inconvenience.

The In This Together program includes:

- Workbook and
- Case studies that demonstrate techniques that have been successfully used in communities throughout Wisconsin.
- Promotional samples showing a variety of examples of how businesses have promoted their businesses during construction.



Work Zone Safety

- Recognizing work zones
 - Flashing lights
 - Orange signs
 - Barrels and flags
- Driving
 - Slow down
 - Follow the law
 - Plan ahead
 - **Handheld devices are now illegal in work zones**
 - Expect the unexpected
- Consequences

- Freeway Service Team
- Intelligent Transportation Systems (ITS)
- Emergency responder meetings



Construction Communication

- Traffic impacts
 - Nighttime lane closures
 - Ramp closures
- Changeable message boards
- News / media alerts
- Website



Project Website

WIS 441 Tri-County Project

Tri-County Expansion



www.projects.511wi.gov/wis441/

OVERVIEW

SCHEDULE

MAP

CLOSURES

NEWS RELEASES

PHOTOS

RESOURCES ▶

CONTA

Overview

Welcome to the WIS 441 Tri-County Project construction website! The WIS 441 Project will reconstruct and expand approximately 6 miles of US 10 / WIS 441 from 4 lanes to 6 lanes between Cold Spring Road (County B) and Oneida Street (US 10) in Winnebago County and reconstruct five interchanges and the Roland Kampo Bridge.

Need daily road closures for the WIS 441 Project?

Follow us on social media!

facebook



FULL OVERVIEW



- Keeping public informed
 - Project web presence
 - Media outreach
 - Newsletters
 - Public meetings
 - Social media
- Feedback



Questions?