



TRI-COUNTY EXPANSION



U.S. Department of Transportation
**Federal Highway
Administration**

WIS 441 Tri-County Project

Public Meeting

March 15, 2017

Presentation Outline

- Introductions
- Design and schedule updates
- Construction update
- Other area projects
- Work zone safety
- Community outreach and business resources

Introductions

- WIS 441 Tri-County Project team
 - Will Dorsey, Northeast Region Director
 - Tom Buchholz, Project Development Manager
 - Chad DeGrave, Design Supervisor
 - Scott Ebel, Design Project Manager
 - Tammy Rabe, Construction Supervisor
 - Kurt Peters, Construction Project Manager
 - Melissa Kok, Northeast Region Assistant Communication Manager

Project Schedule

Function	2012	2013	2014	2015	2016	2017	2018	2019	2020
Design									
Real Estate									
Utilities									
Construction									

Design Updates



- 5 interchanges
- 6 miles of mainline
- Second LLBDM bridge
- Intersection reconstruction

US 10/Oneida St Interchange Ramps and WIS 441 Mainline

- Reconstruct US 10/Oneida St interchange ramps

2018 - 2019

- Expand mainline on existing alignment

2019 - 2020

US 10/Oneida St Interchange

WIS 441 bridge widening

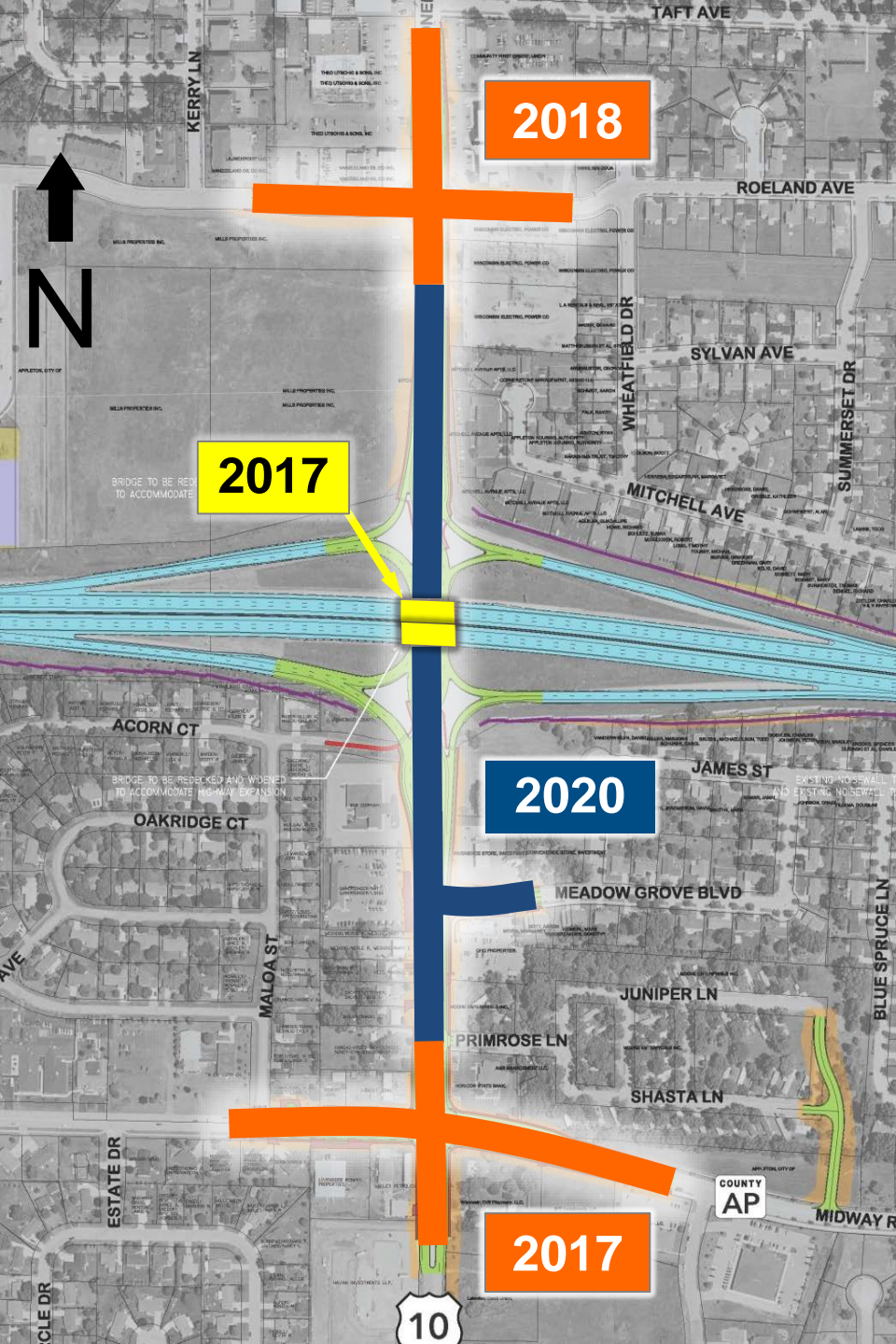
- LET December 2016
- Complete fall 2017

Midway and Valley Rd Intersections

- Midway Rd (2017)
- Valley Rd (2018)

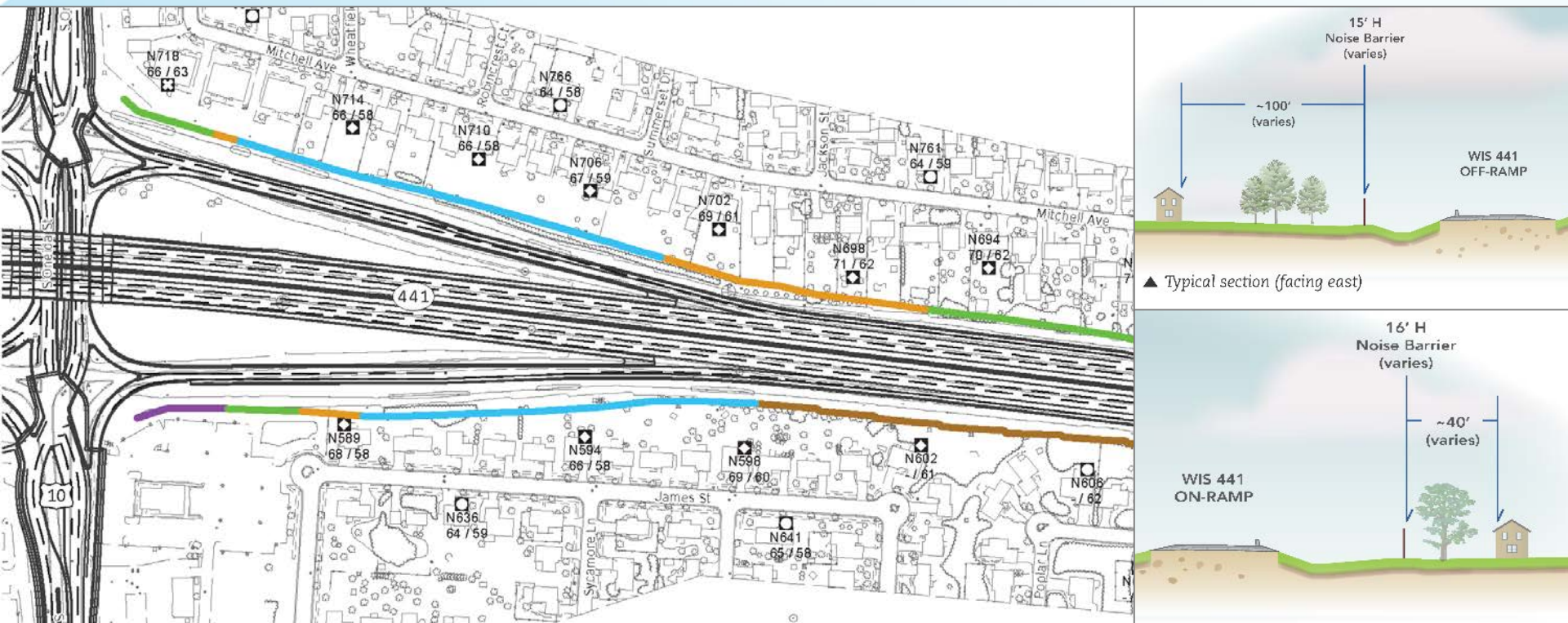
Utility relocations

- Spring / summer 2017



Noise Barrier Limit Update

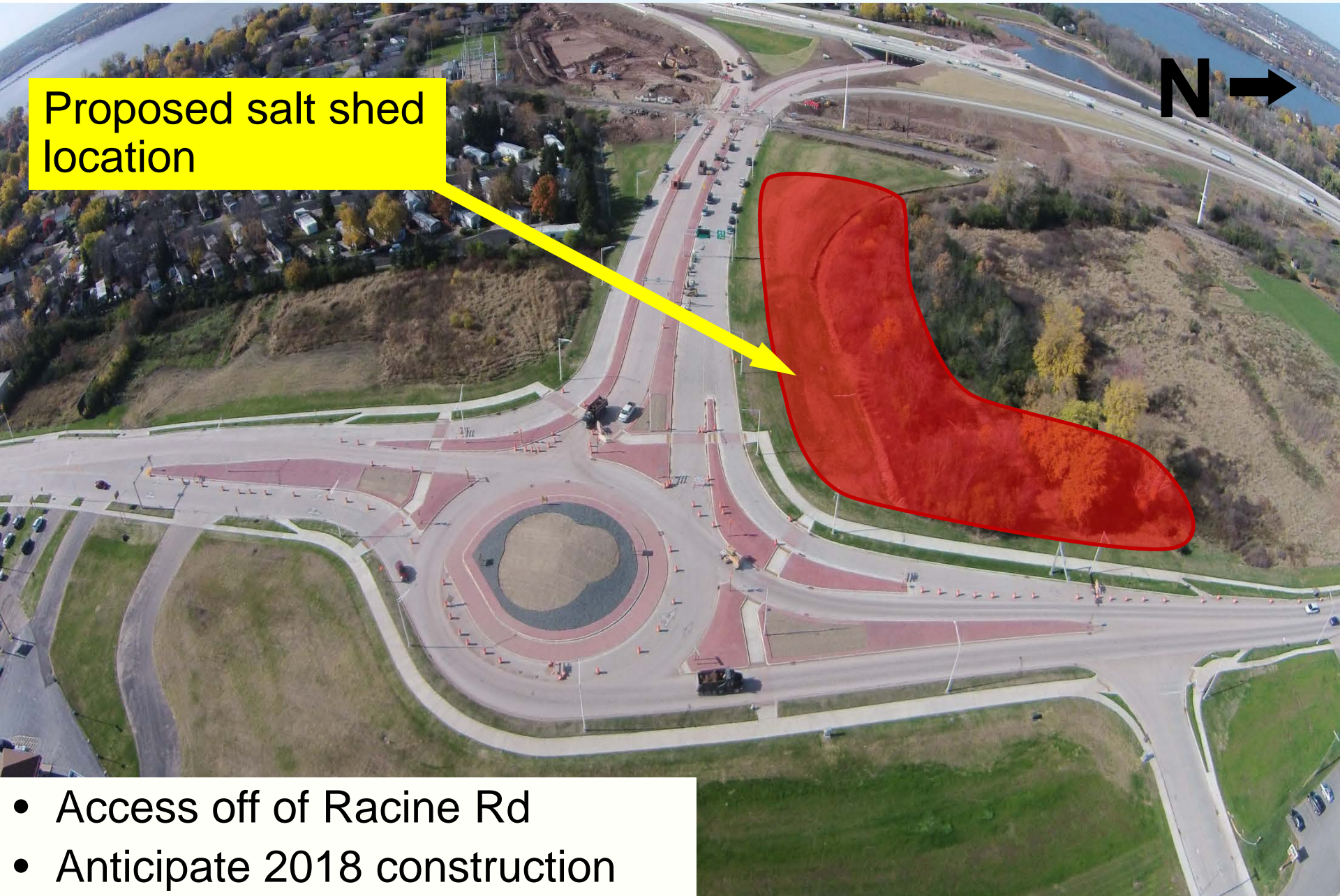
- Residents east of Oneida St expressed concerns about yard impacts due to barrier
- Design has been refined to keep existing noise barriers in place so yard impacts will be minimal



Salt Shed

Proposed salt shed location

N →



- Access off of Racine Rd
- Anticipate 2018 construction



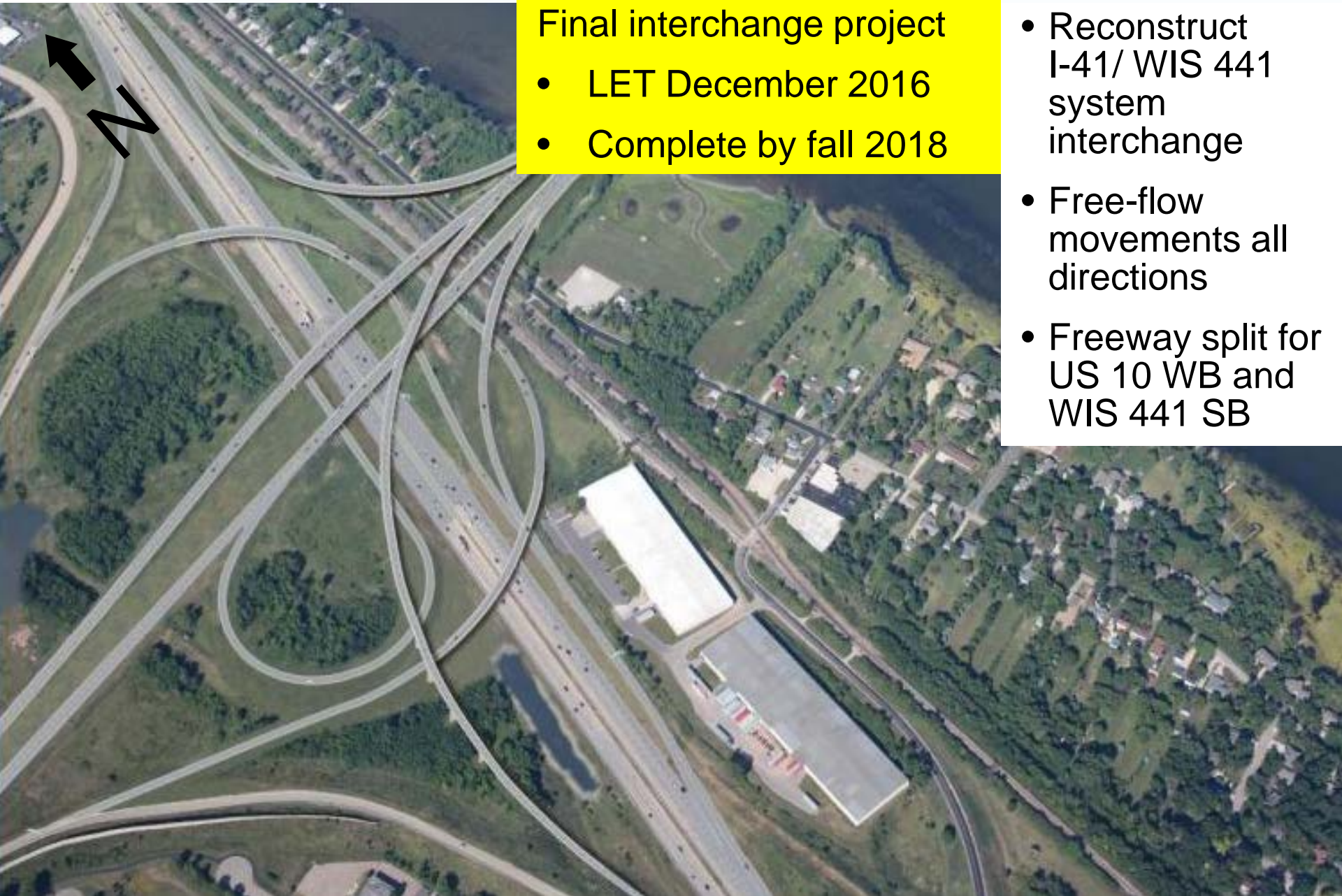
Salt shed example (Brown County)

2017 Construction Updates



- I-41 System interchange
- LLBDM crossing
- Midway Road interchange
- Oneida bridges & intersections

I-41/US10 Interchange

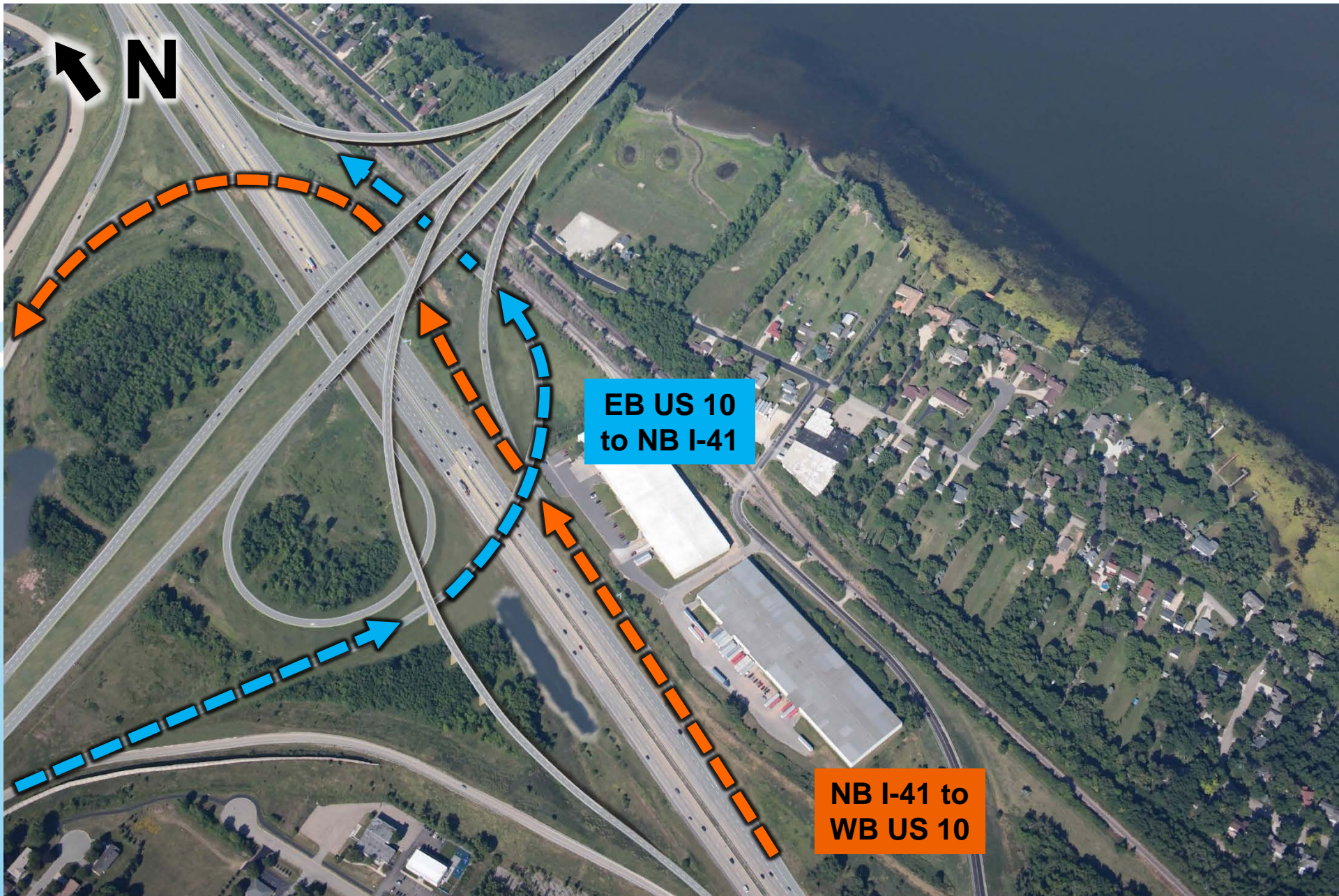


Final interchange project

- LET December 2016
- Complete by fall 2018

- Reconstruct I-41/ WIS 441 system interchange
- Free-flow movements all directions
- Freeway split for US 10 WB and WIS 441 SB

Restore Ramp Movements



EB US 10
to NB I-41

NB I-41 to
WB US 10

I-41 / US10 Interchange Construction

WB US 10 to
NB I-41
CLOSED



CLOSED

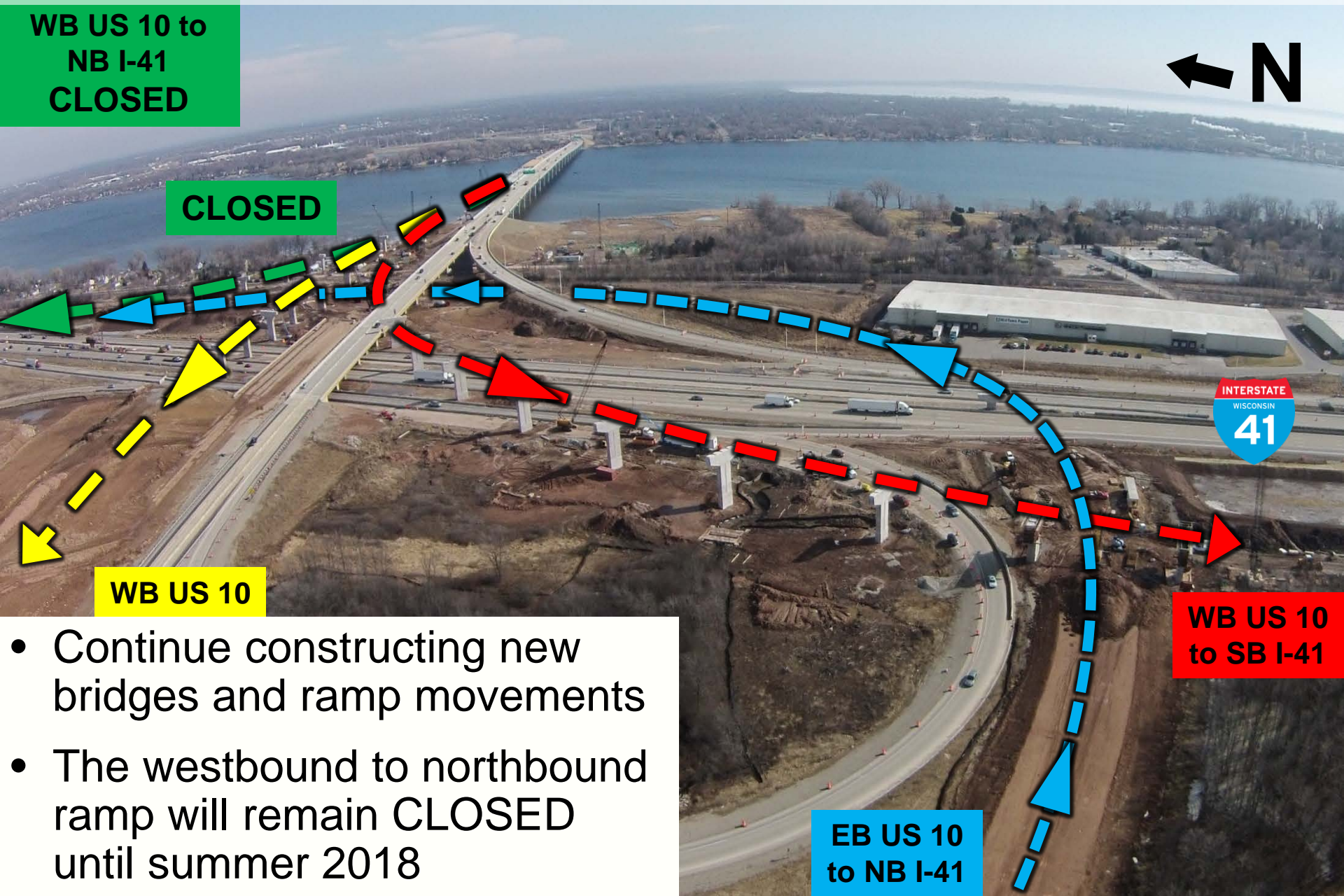
WB US 10



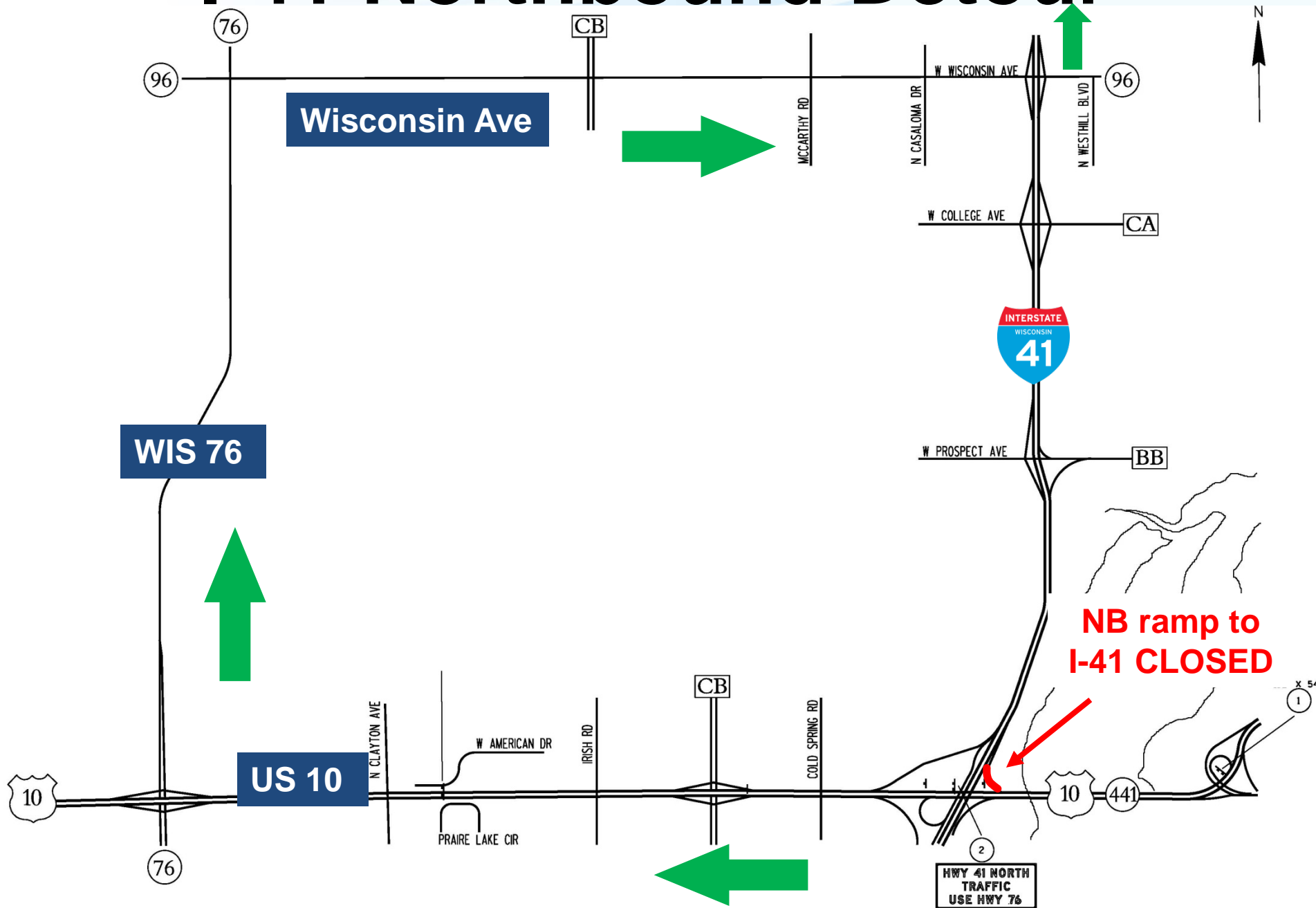
WB US 10
to SB I-41

EB US 10
to NB I-41

- Continue constructing new bridges and ramp movements
- The westbound to northbound ramp will remain CLOSED until summer 2018

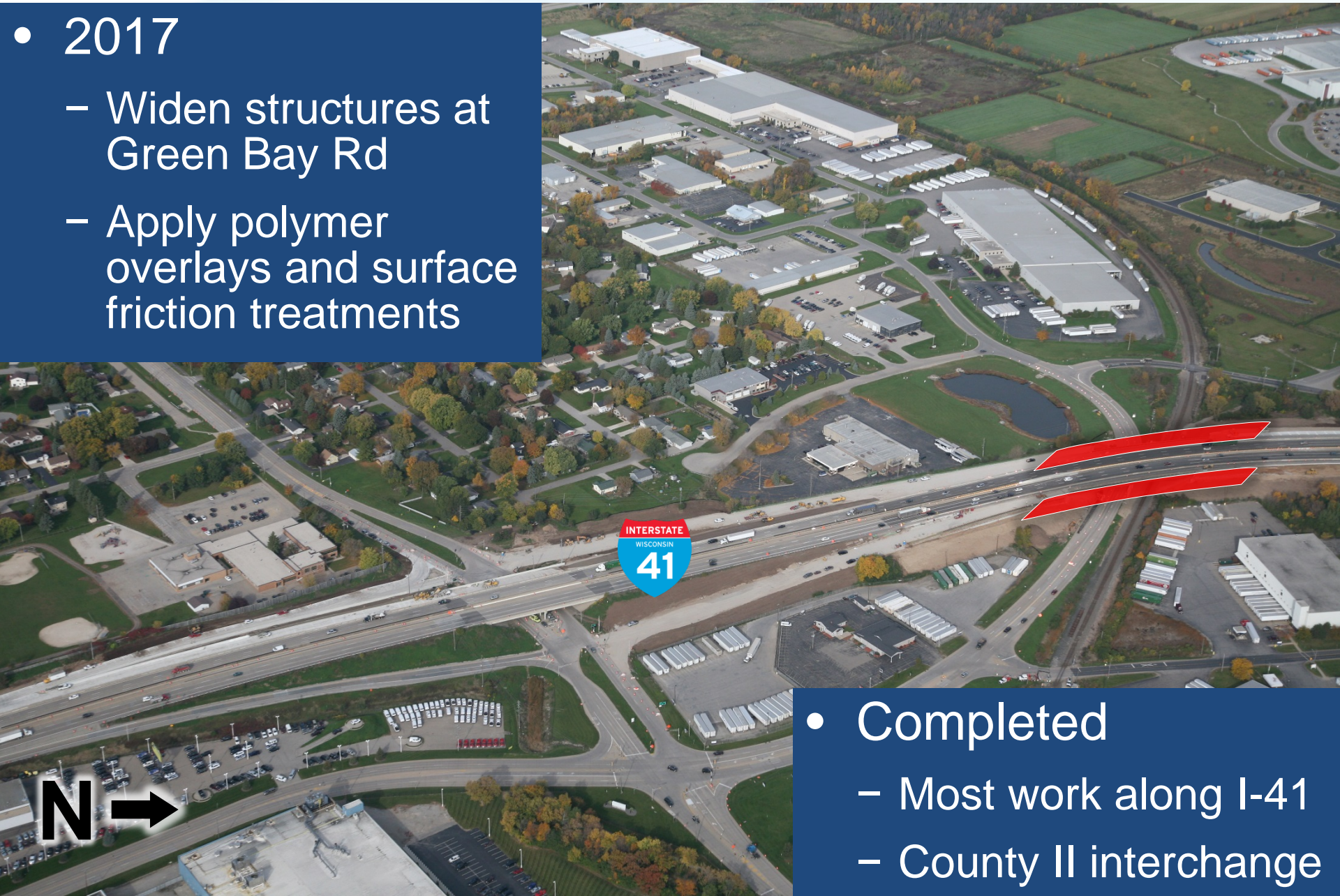


I-41 Northbound Detour



I-41 and Green Bay Rd

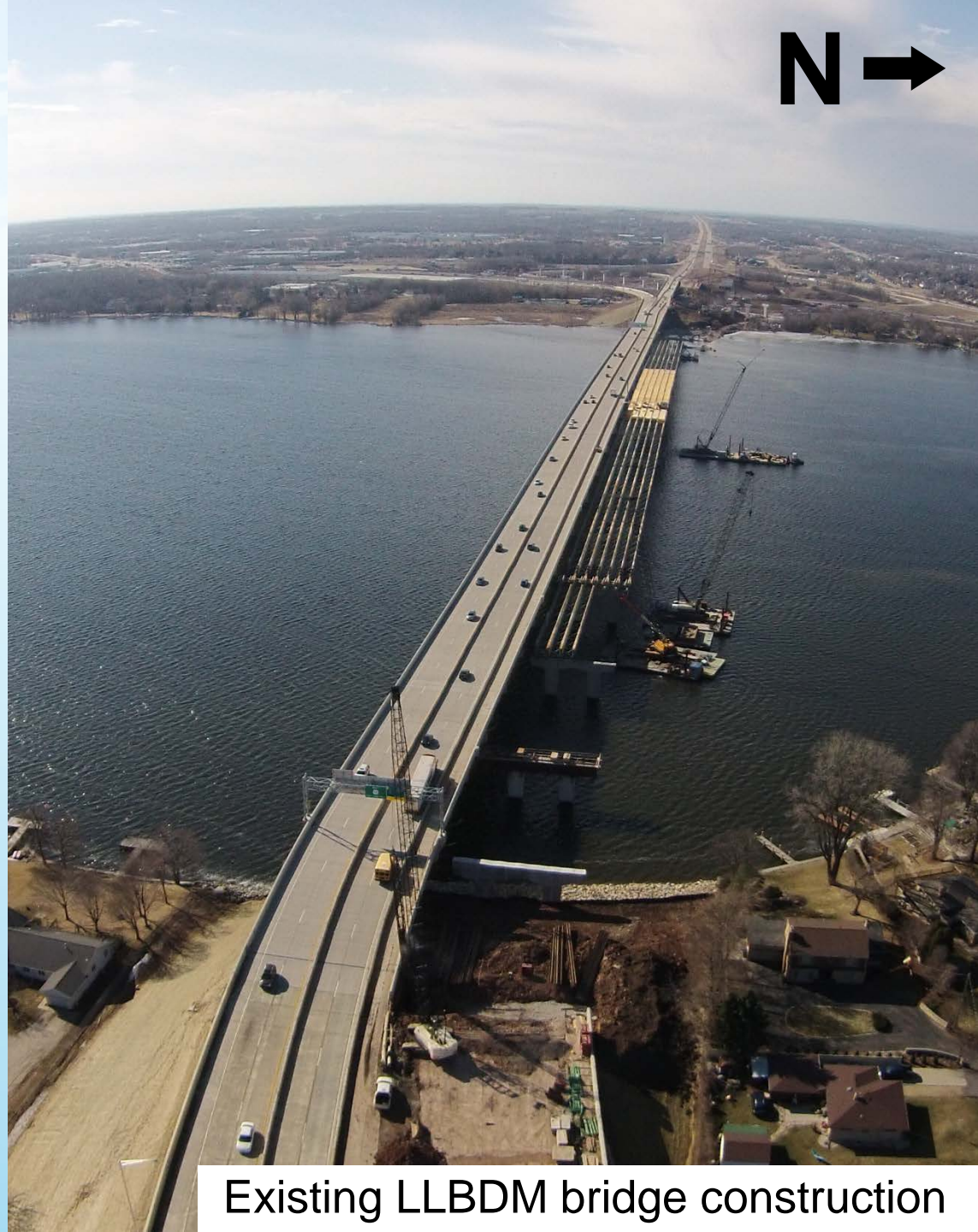
- 2017
 - Widen structures at Green Bay Rd
 - Apply polymer overlays and surface friction treatments



- Completed
 - Most work along I-41
 - County II interchange

LLBDM Crossing

- Traffic remains on new eastbound bridge over LLBDM
- Continue to recondition existing westbound bridge



Existing LLBDM bridge construction

LLBDM Crossing

N →



- New piers and girders on each end of existing bridge

LLBDM Crossing

- Utilizing existing piers and girders



Racine Road Interchange



- Major interchange work complete

Racine Road Interchange



WB on-ramp will remain closed until summer 2018

- Tayco St summer 2018
- Noisewalls complete by fall 2018

Racine Road Landscaping

Roadway work is complete



- Landscape plantings and trees to be installed this spring
- City of Menasha to place statue

County AP/Midway Rd Interchange

2017 - 2019

CLOSED
Summer 2018 to
Fall 2019

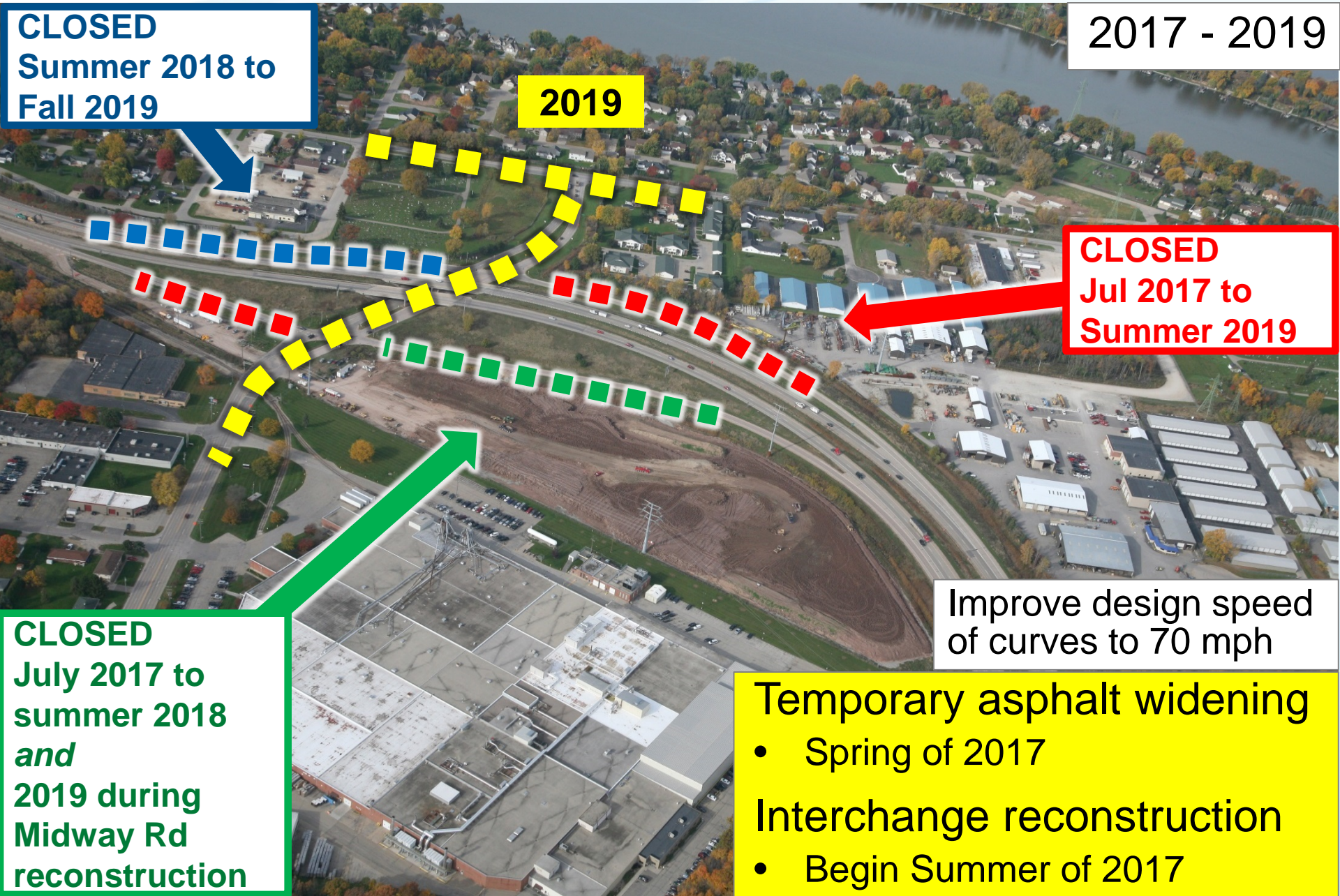
2019

CLOSED
Jul 2017 to
Summer 2019

Improve design speed
of curves to 70 mph

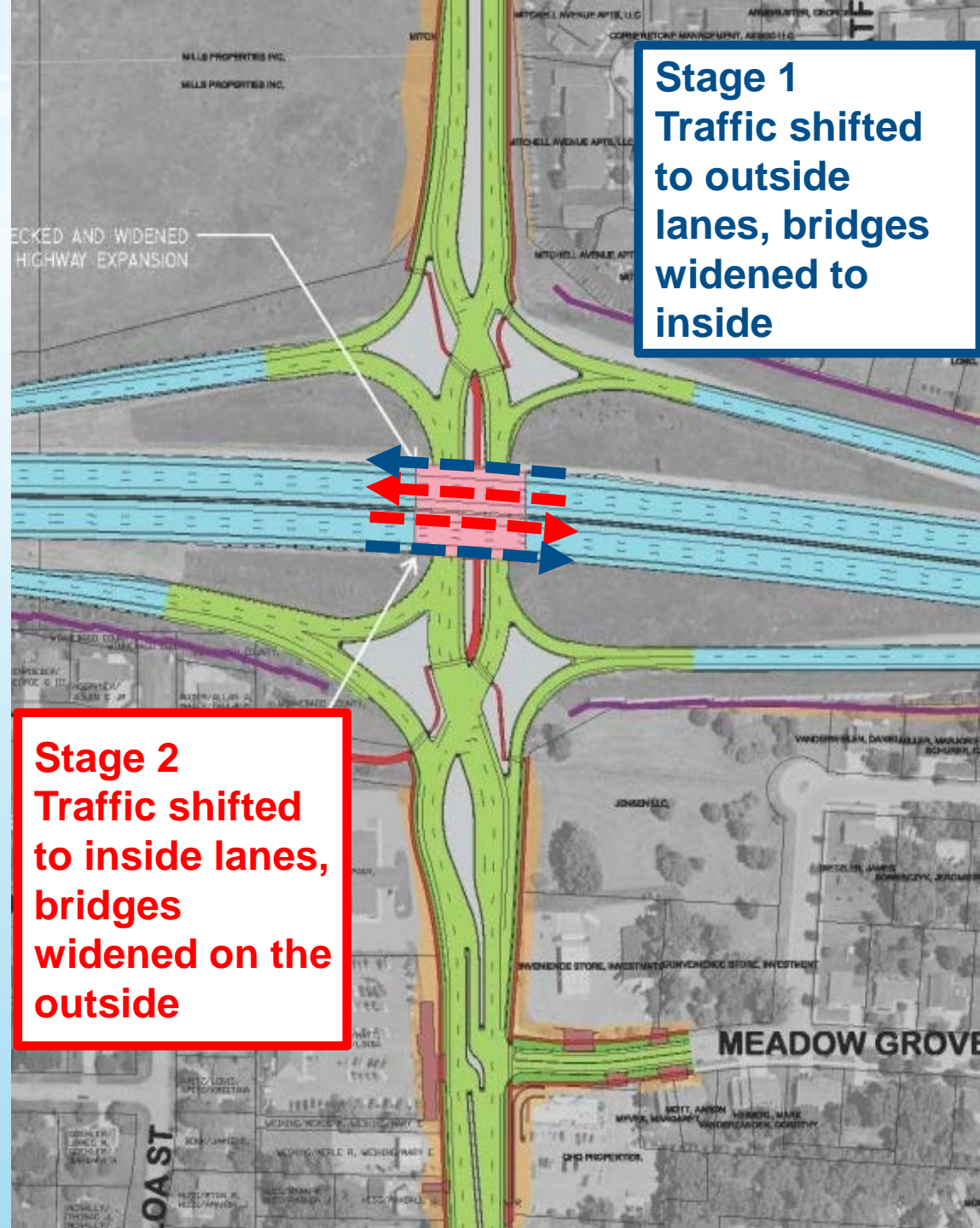
CLOSED
July 2017 to
summer 2018
and
2019 during
Midway Rd
reconstruction

- Temporary asphalt widening
- Spring of 2017
- Interchange reconstruction
- Begin Summer of 2017



Oneida St Bridges

- Oneida St bridges
 - Widen in two stages
 - July to Nov 2017
 - Requires occasional Oneida St closures
 - Ped access maintained on Oneida
(*when open to traffic*)

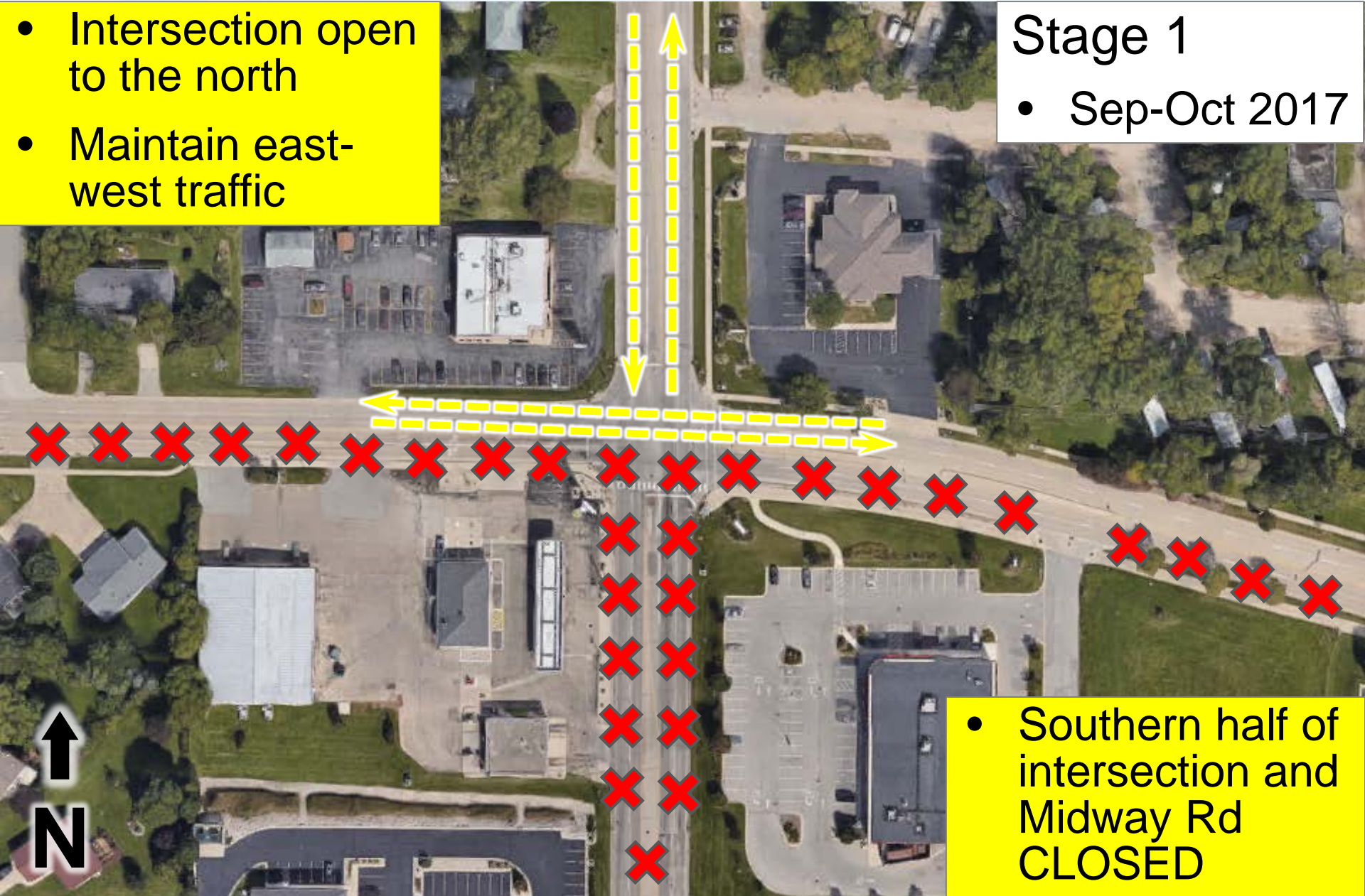


Oneida St & Midway Rd Intersection

- Intersection open to the north
- Maintain east-west traffic

Stage 1

- Sep-Oct 2017



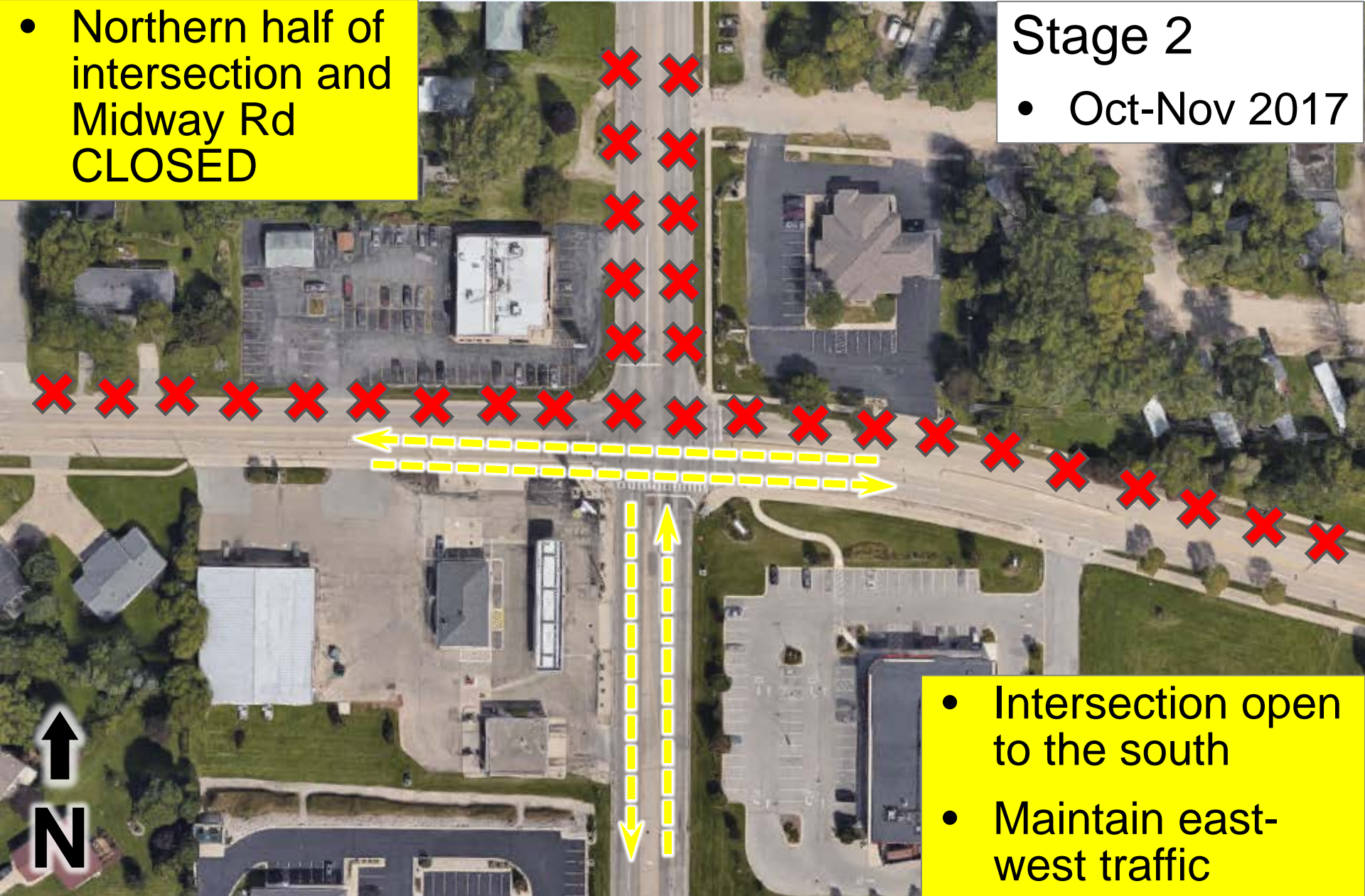
- Southern half of intersection and Midway Rd CLOSED

Oneida St & Midway Rd Intersection

- Northern half of intersection and Midway Rd CLOSED

Stage 2

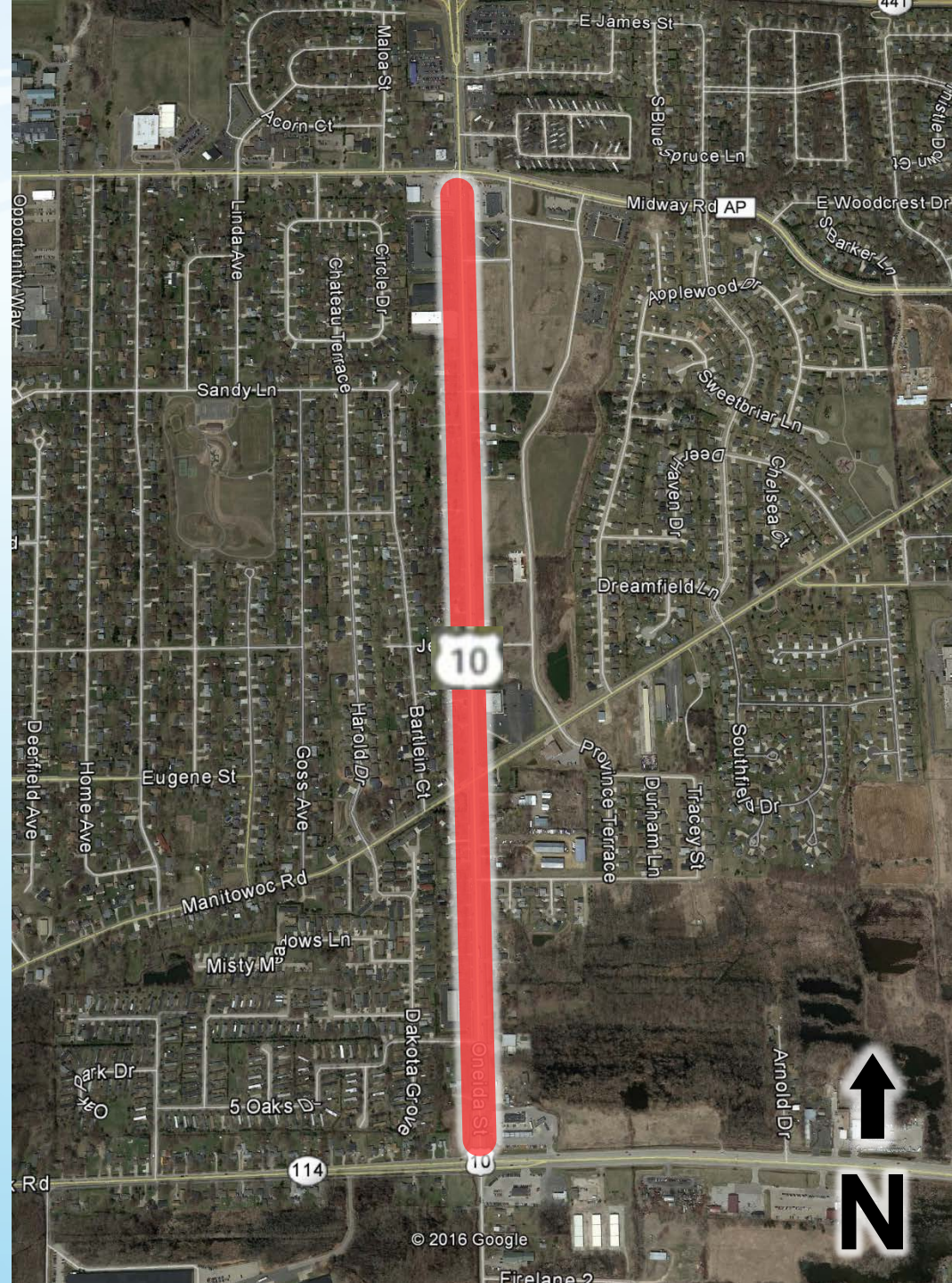
- Oct-Nov 2017



- Intersection open to the south
- Maintain east-west traffic

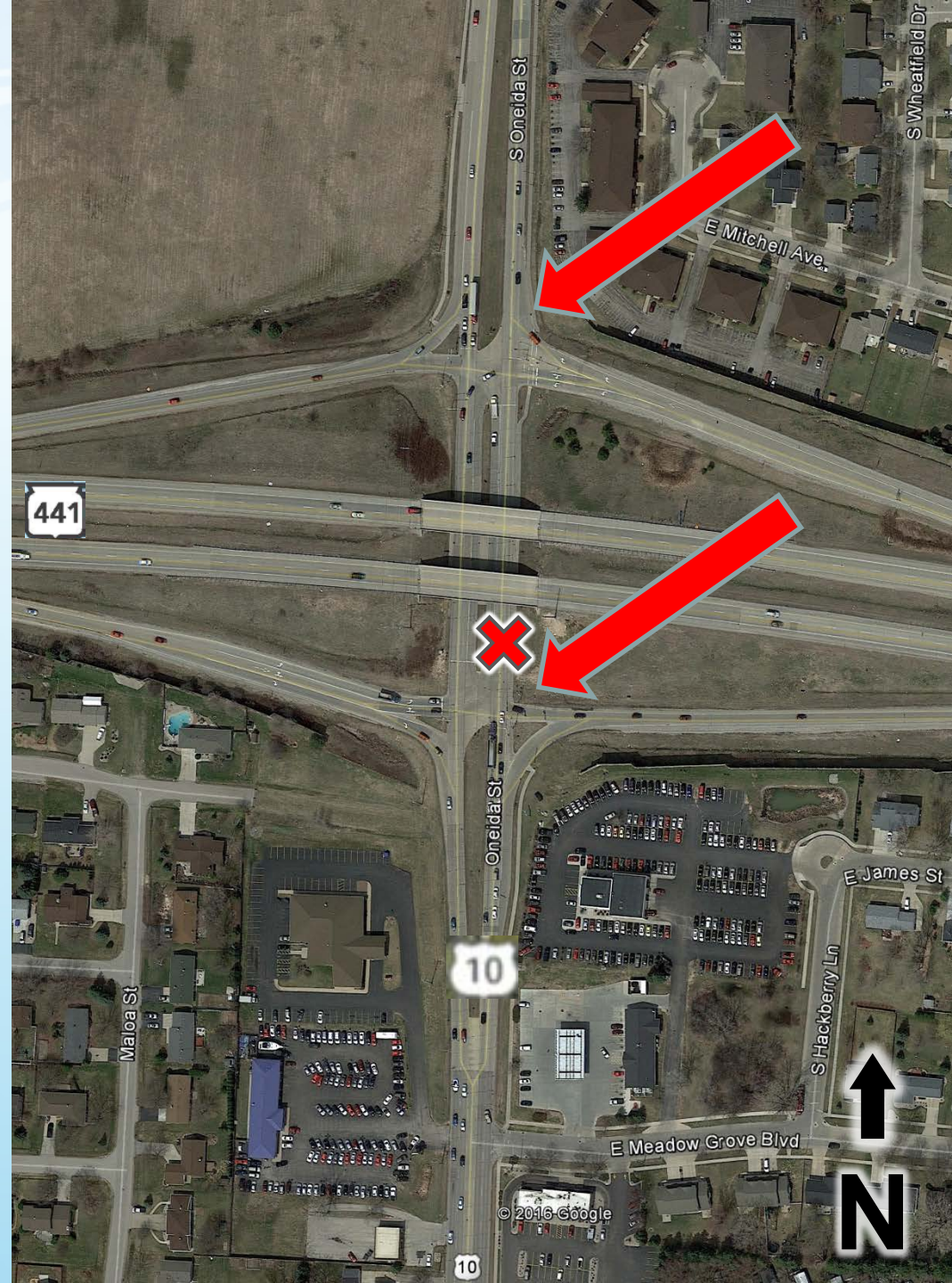
Other work in area

- US 10 rehabilitation
 - Aug to Oct 2017
 - Access maintained to businesses and residences
 - Detour: US 10 detour route will follow WIS 441, County KK, and County N



Other work in area

- City of Appleton utility work
 - Water main relocation
 - WB US 10 / NB Oneida St CLOSED at WIS 441
 - Detour: WB US 10 County AP to WIS 47 to US 10



Other work in area

- WIS 441 bridge painting
 - June 2017 to Aug 2019
 - WIS 441 and WIS 96 will remain open with lane closures



Business Resources

'In this together' kit

- Partnership with businesses
- Tools to maintain connection with customers
- Print ad templates
- Web banner ads
- Web site button



[In This Together](#)
[Workbook](#)
[Case studies](#)
[Promotional samples](#)
[Contacts](#)

In This Together - Workbook

This workbook shows how WisDOT and businesses can work together to succeed during a highway construction project.

Sections

- [Planning ahead](#)
- [Staying informed](#)
- [Handling traffic](#)
- [Reducing traffic](#)
- [Keeping customers informed](#)
- [Assistance for motor vehicle dealers](#)
- [Tips](#)

Worksheet

Checklist for business owners/operators showing items businesses could do, prior to and after construction successful.

- [Business checklist/timeline](#) 



Work Zone Safety

- Recognizing work zones
 - Flashing lights
 - Orange signs
 - Barrels and flags
- Driving
 - Slow down
 - Follow the law
 - Plan ahead
 - **Handheld devices are now illegal in work zones**
 - Expect the unexpected
- Consequences

- Freeway Service Team
- Intelligent Transportation Systems (ITS)
- Emergency responder meetings



Construction Communication

- Traffic impacts
 - Nighttime lane closures
 - Ramp closures
- Changeable message boards
- News / media alerts
- Website



Project Website

WIS 441 Tri-County Project

Tri-County Expansion



www.projects.511wi.gov/wis441/

OVERVIEW

SCHEDULE

MAP

CLOSURES

NEWS RELEASES

PHOTOS

RESOURCES ▸

CONTACT

Overview

Welcome to the WIS 441 Tri-County Project construction website! The WIS 441 Project will reconstruct and expand approximately 6 miles of US 10 / WIS 441 from 4 lanes to 6 lanes between Cold Spring Road (County B) and Oneida Street (US 10) in Winnebago County and reconstruct five interchanges and the Roland Kamp Bridge.

Need daily road closures for the WIS 441 Project?

Follow us on social media!

facebook



FULL OVERVIEW



- Keeping public informed
 - Project web presence
 - Media outreach
 - Newsletters
 - Public meetings
 - Social media
- Feedback

A large-scale construction project is underway at dusk. Several tall lattice-boom cranes are positioned on a snow-covered ground, their silhouettes stark against the colorful sky. In the background, a multi-lane highway bridge spans a body of water, with traffic visible on its surface. The foreground is filled with snow-covered earth and construction materials. The overall atmosphere is one of industrial activity during the 'blue hour' of sunset.

Questions?