



# TRI-COUNTY EXPANSION



U.S. Department of Transportation  
Federal Highway  
Administration

# **WIS 441 Tri-County Project**

## **Appleton Road Interchange Pre-Closure Business Meeting**

**March 17, 2015**

# Presentation Outline

- Introductions
- Project improvements
- Schedule
- Appleton Road Interchange construction
- Work zone safety
- Business resources
- Communicating with you

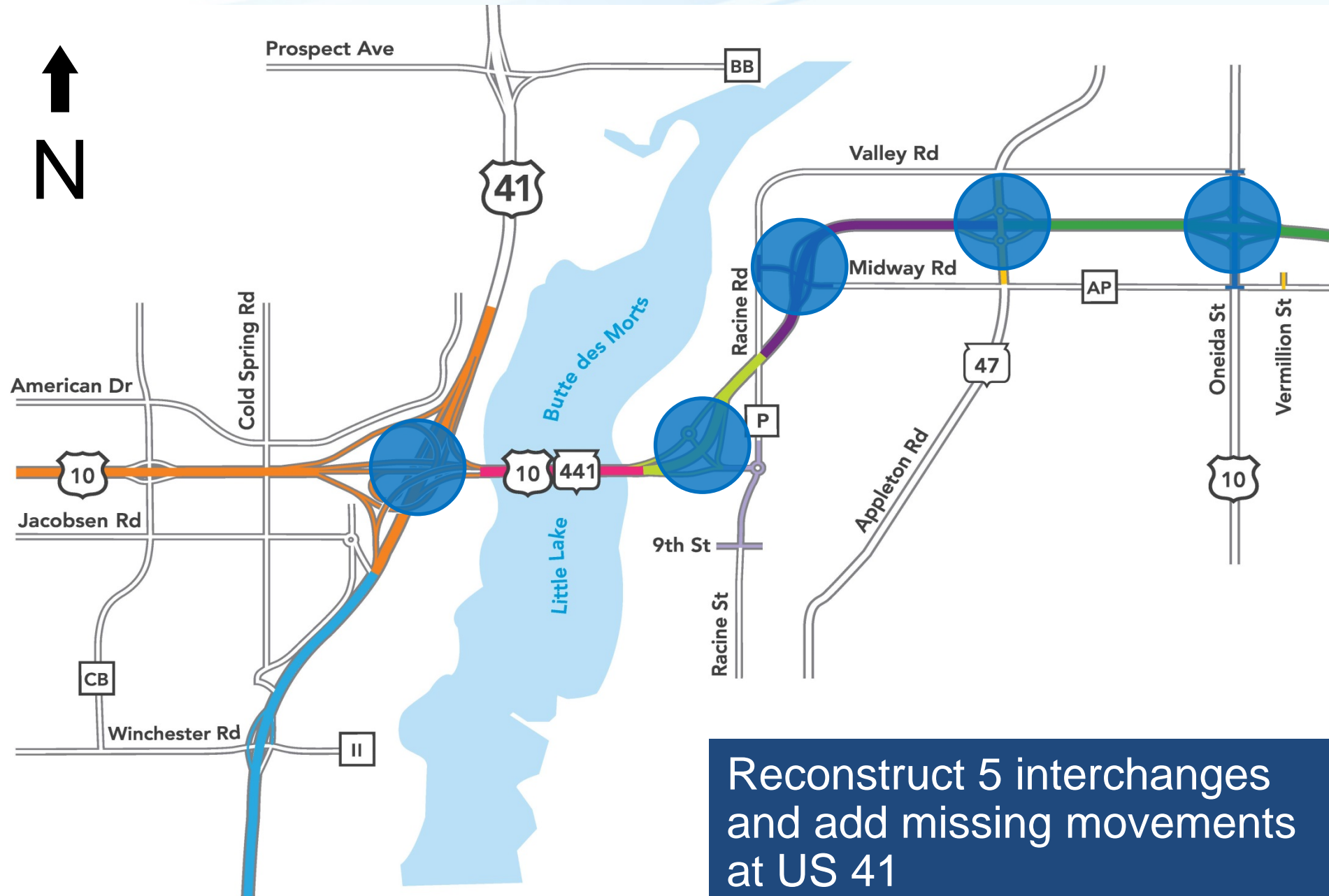
# Introductions

- WIS 441 Tri-County Project team
  - Will Dorsey, Northeast Region Director
  - Tom Buchholz, Project Development Manager
  - Tammy Rabe, Construction Supervisor
  - Kurt Peters, Construction Project Manager
  - Adam Janz, Construction Resident Engineer
  - Matt Berg, Project Construction Leader

# Introductions

- WIS 441 Tri-County Project team
  - Chad DeGrave, Design Supervisor
  - Scott Ebel, Design Project Manager
  - Kimberly Slezak, Design Lead
  - Kim Rudat, Regional Communication Manager
  - Mark Kantola, Project Communication Manager

# Project Improvements - Overview



# Project Improvements - Overview





# Project Improvements - Overview





# Project Improvements - Overview



# Project Improvements - Overview



# Project Improvements - Overview

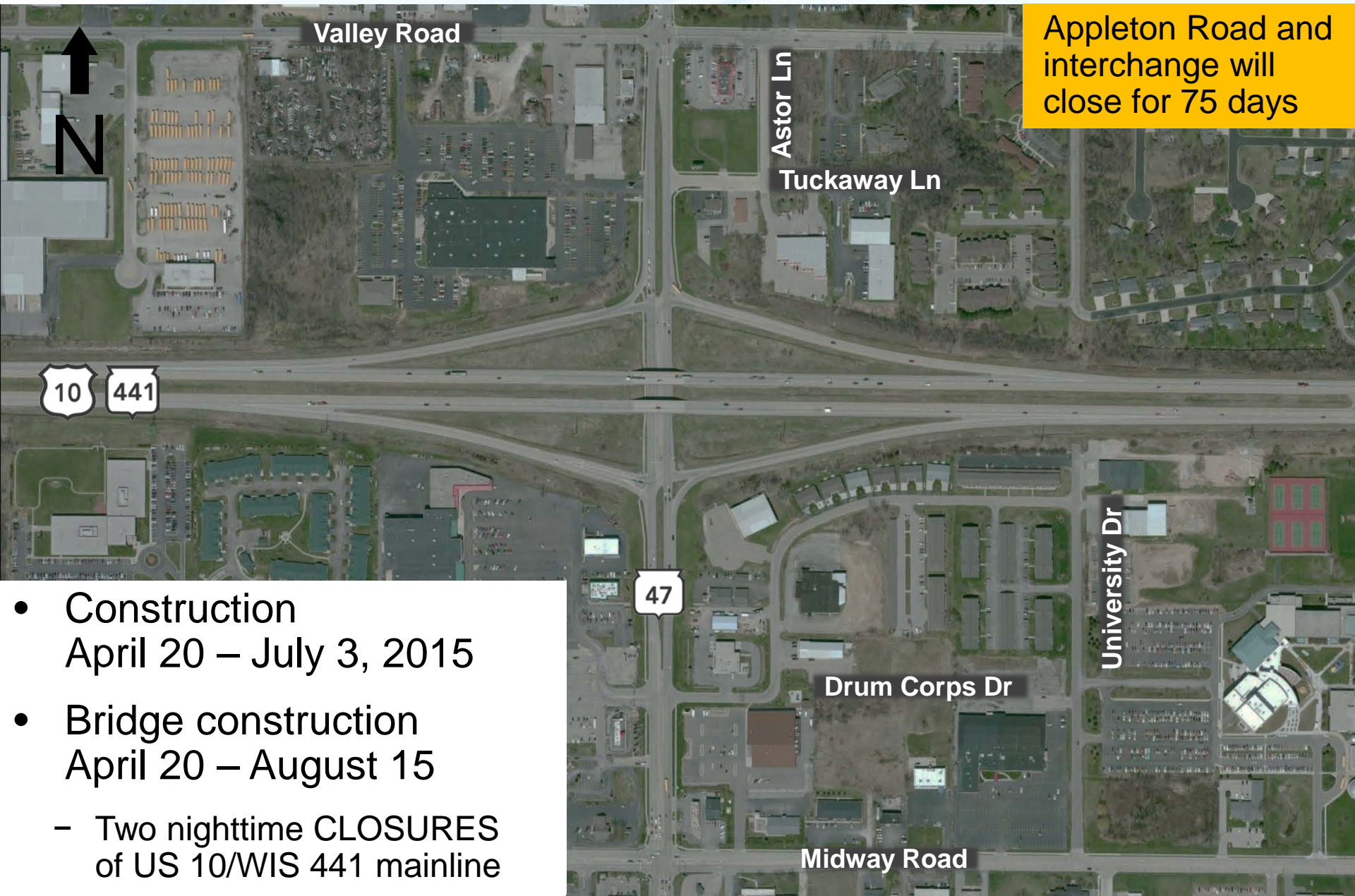


# Project Schedule

Function	2012	2013	2014	2015	2016	2017	2018	2019
Design								
Real Estate								
Utilities								
Construction								



# WIS 47/Appleton Rd Interchange



Appleton Road and interchange will close for 75 days

Valley Road

Astor Ln

Tuckaway Ln

University Dr

Drum Corps Dr

Midway Road

10 441

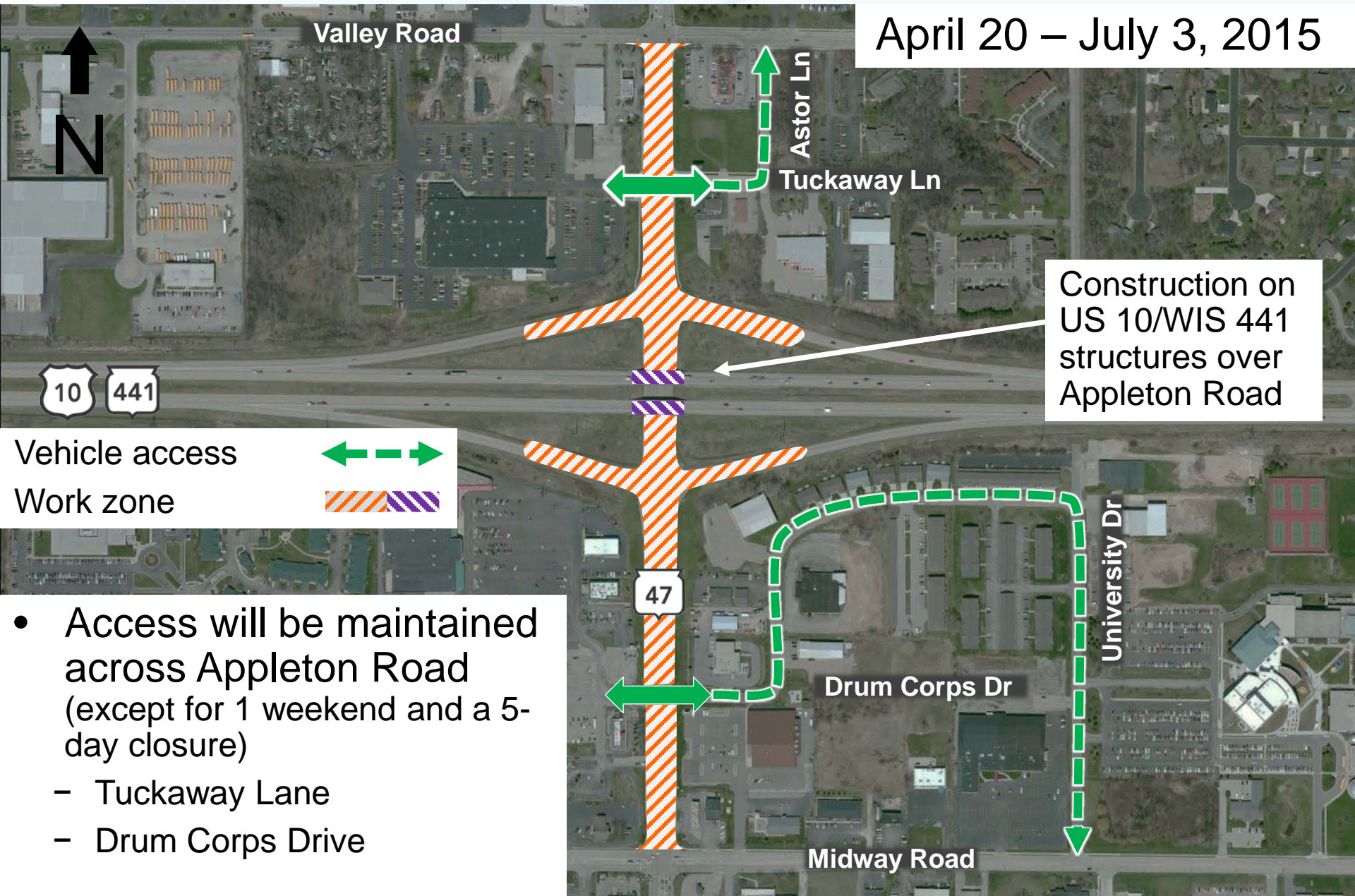
47

- Construction  
April 20 – July 3, 2015
- Bridge construction  
April 20 – August 15
  - Two nighttime CLOSURES  
of US 10/WIS 441 mainline



# WIS 47/Appleton Rd Interchange

April 20 – July 3, 2015



Construction on  
US 10/WIS 441  
structures over  
Appleton Road

Vehicle access



Work zone

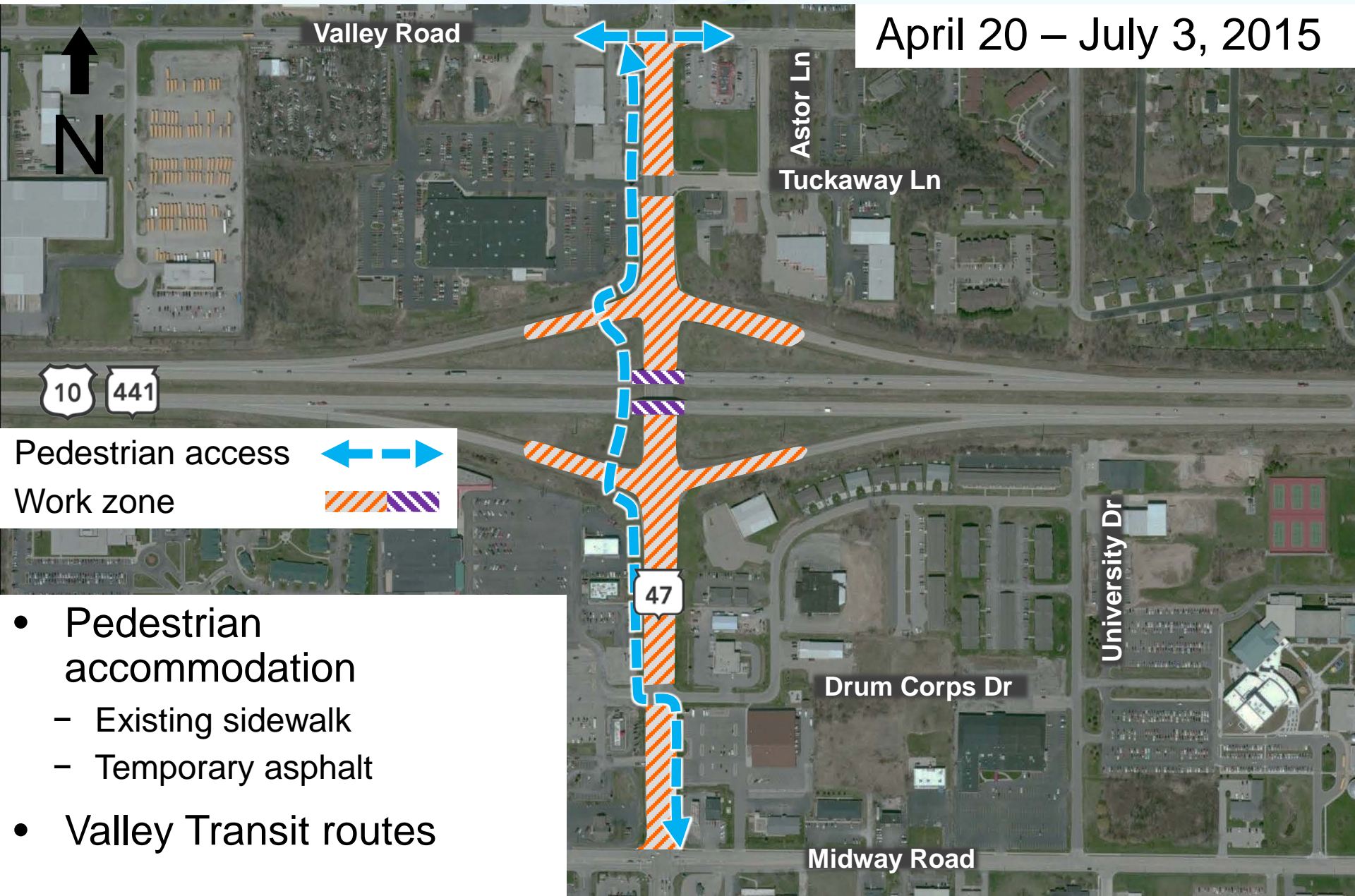


- Access will be maintained across Appleton Road (except for 1 weekend and a 5-day closure)
  - Tuckaway Lane
  - Drum Corps Drive



# WIS 47/Appleton Rd Interchange

April 20 – July 3, 2015



Valley Road

Astor Ln

Tuckaway Ln

University Dr

Drum Corps Dr

Midway Road



Pedestrian access



Work zone



- Pedestrian accommodation
  - Existing sidewalk
  - Temporary asphalt
- Valley Transit routes



# WIS 47/Appleton Rd Interchange



Valley Road

Astor Ln

Tuckaway Ln

University Dr

Drum Corps Dr

Midway Road



CLOSURE



Work zone

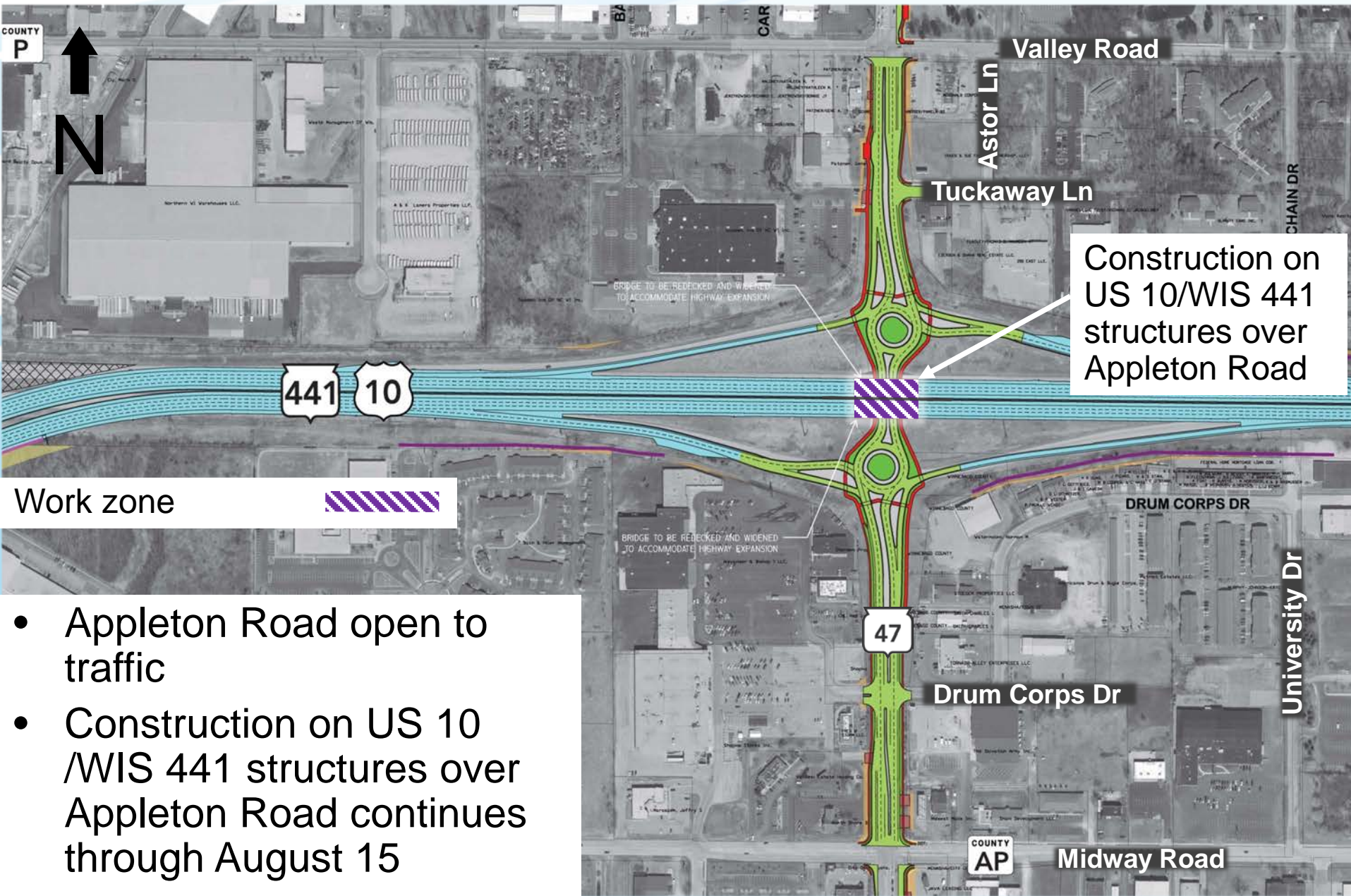


- Tuckaway Lane and Drum Corps Drive access across Appleton Road CLOSED

- One weekend
- 5 consecutive day period



# WIS 47/Appleton Rd Interchange



Construction on  
US 10/WIS 441  
structures over  
Appleton Road

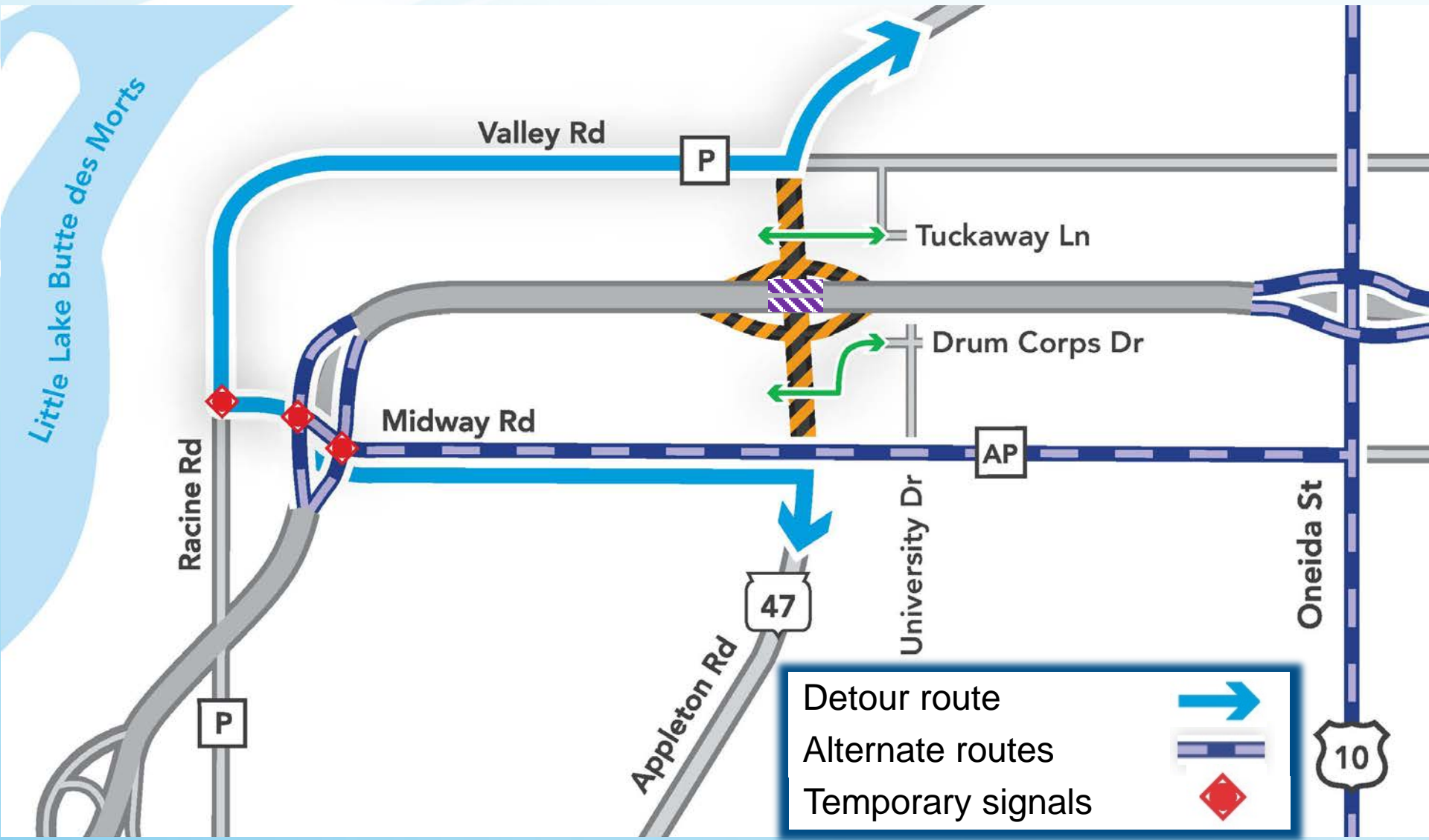
Work zone



- Appleton Road open to traffic
- Construction on US 10 /WIS 441 structures over Appleton Road continues through August 15

# Appleton Road

## Detour and Alternate Routes



# Work Zone Safety

- Recognizing work zones
  - Flashing lights
  - Orange signs
  - Barrels and flags
- Driving
  - Slow down
  - Follow the law
  - Put your cell phone away
  - Expect the unexpected
  - Plan ahead
- Consequences
  - Fines, prison, injuries/fatalities

**SAFER** IN THE  
**ZONE**





# Work Zone Safety



- Freeway Service Team
- Intelligent Transportation Systems (ITS)
- Emergency responder meetings

# Business Resources

## 'In this together' kit

- Tools to assist businesses along WIS 441 corridor:
  - “In This Together” workbook
  - WIS 441 Tri-County Expansion mini-communications guide
  - Temporary Business Sign Application
  - Supplier letter



### WIS 441 Tri-County Project

OVERVIEW

SPECIAL PROJECT FEATURES

IMPROVED INTERCHANGES

**BUSINESS RESOURCES**

MEETINGS

#### A helping hand for businesses

Construction projects bring about a whole new set of challenges for businesses — that's why we're offering help. This online kit will supply you with communications tools that will help you advertise your business and keep in touch with your customers and suppliers.

#### In This Together - Workbook

The WisDOT can work together with businesses to succeed during this highway construction project. Visit the WisDOT website for more resources.

#### WIS 441 Tri-County Expansion mini communications guide

A guide designed to help businesses both formulate and implement a plan to help them survive and thrive during construction on WIS 441

[WIS 441 Tri-County Expansion mini communications guide](#)

**Temporary Business Sign Application**  
[Application](#)

<http://www.us41wisconsin.gov/wis441/business-resources>

# Business Resources - Signing

- Recommend that business signs be coordinated
- WisDOT construction staff will facilitate coordination with municipalities
  - Confirm acceptability of proposed sign location
- Businesses submit permits to WisDOT
  - Use the temporary business sign permit for state highways





# Business Resources - Signing



# Construction Communication

- Traffic impacts
  - Nighttime lane closures
  - Ramp closures
- Changeable message boards
  - News / media alerts
  - Website



# Communicating With You



Home | Project updates | Contact us  
Site index | Help | En Español | Hmong | WisDOT home



Get info on the upcoming  
WIS 441 Tri-County Project »

US 41 Project



OVERVIEW

TRAFFIC

CLOSURES

MAP

GALLERY

NEWS & MEETINGS

RESOURCES



## WIS 441 Tri-County Project

Construction begins 2014

### OVERVIEW

WEEKLY WIS 441 CLOSURES

WIS 441 UPDATES

PREVIOUS STUDIES

SCHEDULE

CONTACTS

IMPROVED INTERCHANGES

SPECIAL PROJECT FEATURES

MEETINGS

### WIS 441 Tri-County Project

*WIS 441 Tri-County Project lane closures for February 2 – February 6*

*Public meeting scheduled for WIS 441*

*15 new cameras now monitoring traffic*

*Utility work begins on WIS 47/Appleton*

The Wisconsin Department of Transportation is expanding the WIS 441 freeway. The WIS 441 Tri-County Project will add four lanes from Cold Spring Road to about



- WisDOT will continue to keep public informed
  - Project web presence
  - Media outreach
  - Newsletters
  - Public meetings
- Feedback

[www.us41wisconsin.gov/wis441](http://www.us41wisconsin.gov/wis441)



# Project Office



- Field office
  - Permanent presence
  - Public / business involvement

# Communicating With You

- Comment forms
  - Submit today or via mail
  - Submit comments by March 31, 2015
- Join project email list
  - Provide email address on sign-in sheets
  - Send email to project staff

[illegible]





**Questions?**