



TRI-COUNTY EXPANSION



U.S. Department of Transportation
Federal Highway
Administration

WIS 441 Tri-County Project

**Racine Rd (County P) and 12th Street
Access Meeting #3**

Jan 27, 2015

Introductions

- WIS 441 Tri-County Project team
 - Tom Buchholz, Project Development Manager
 - Chad DeGrave, Design Supervisor
 - Scott Ebel, Design Project Manager
 - Tammy Rabe, Construction Supervisor
 - Kurt Peters, Construction Project Manager
 - Mark Kantola, Communication Manager

Presentation Outline

- Overview of Project improvements and schedule
- Summary of alternatives and feedback from previous meetings
- Refined intersection design alternative
- Design highlights and impacts
- Next steps
- Communication

Project Improvements - Overview

- Reconstruct 5 interchanges and add missing movements at US 41



Project Improvements - Overview

- Replace 6 miles of mainline pavement, expand to 6 lanes



Project Improvements - Overview

- Improve design speed of roadway curves



Project Improvements - Overview

- Construct a second parallel bridge over Little Lake Butte des Morts



Project Improvements - Overview

- Revise interchange control



Project Improvements - Overview

- Add auxiliary lanes along US 41 for system interchange operation



Project Schedule

Function	2012	2013	2014	2015	2016	2017	2018	2019
Design								
Real Estate								
Utilities								
Construction								

Note: Timelines are subject to change

County P/Racine Rd Interchange

Mainline design speed = 70 mph

Forecasted Mainline Volumes = 88,000 / 70,400 AADT

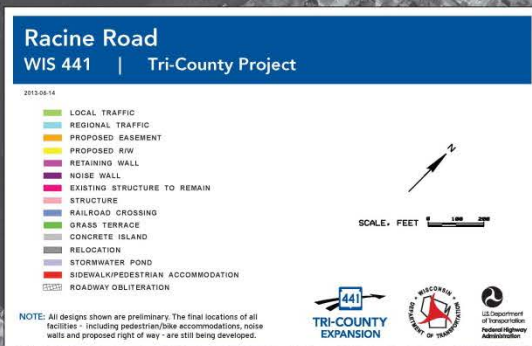
(Existing Mainline Volumes = 60,500 / 48,100 AADT)

Highest crash rate within
WIS 441 Project Corridor.
(1.23 per million users)

Railroad Crossing

Updated design
presented on
following slides

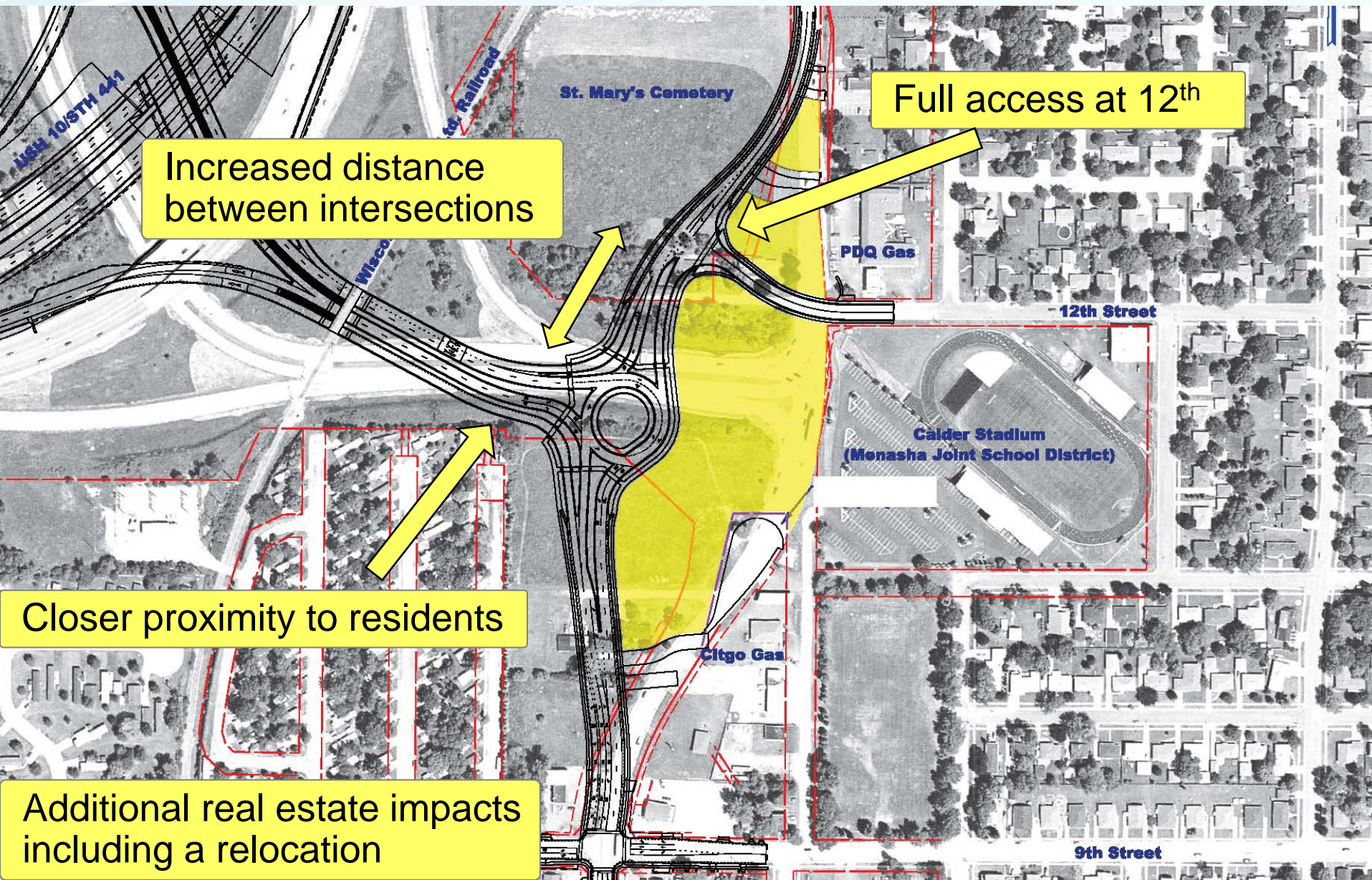
Forecasted Ramp Volume = 23,100 AADT
(Existing Ramp Volume = 19,600 AADT)



Feedback

- Desire for left turn onto Racine St (County P) from 12th Street
- Concern about increased traffic to school and neighborhood with 15th Street alternatives
- Request for design refinement to accommodate full access at 12th Street

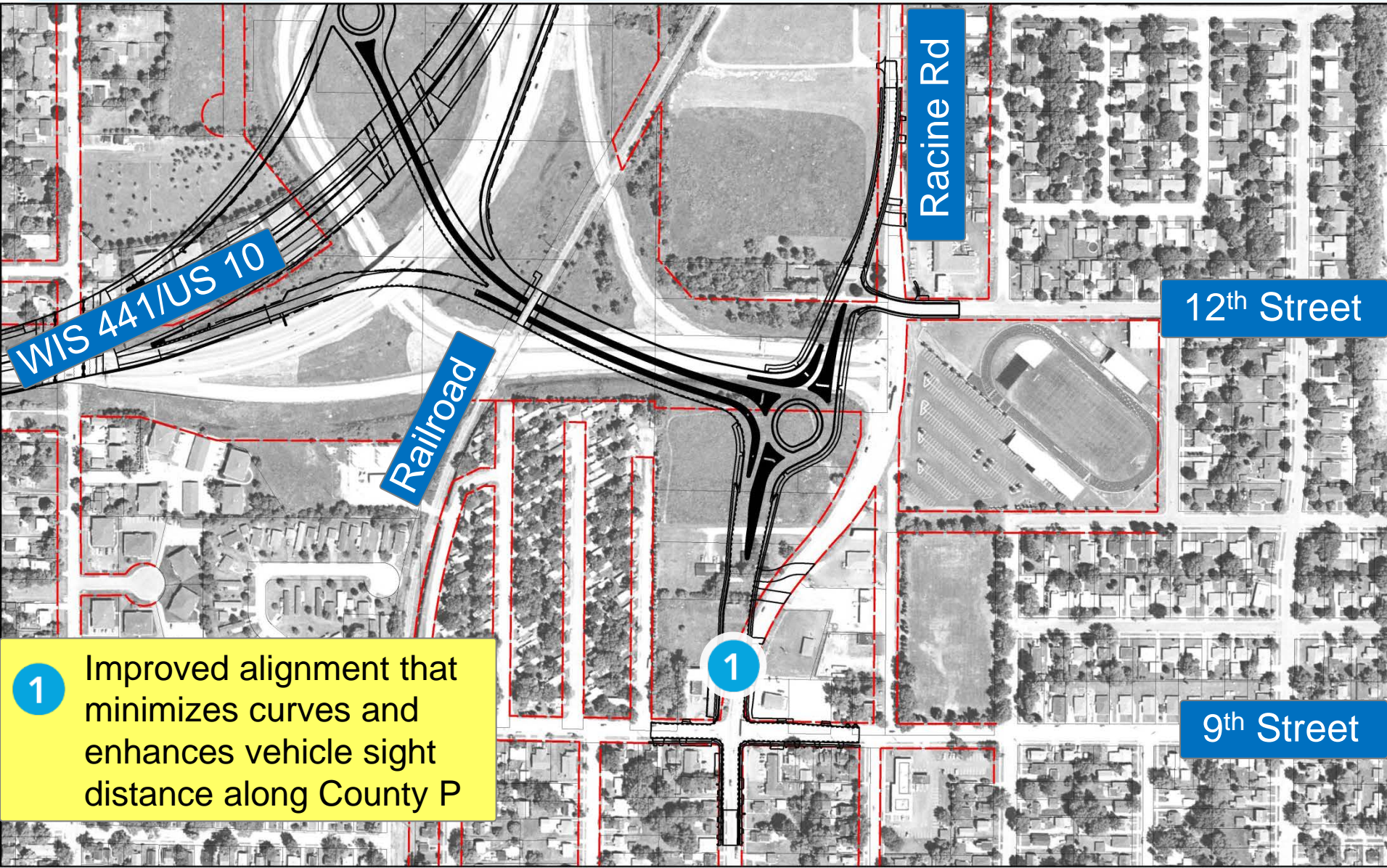
Revised Proposal – June 2014



Feedback

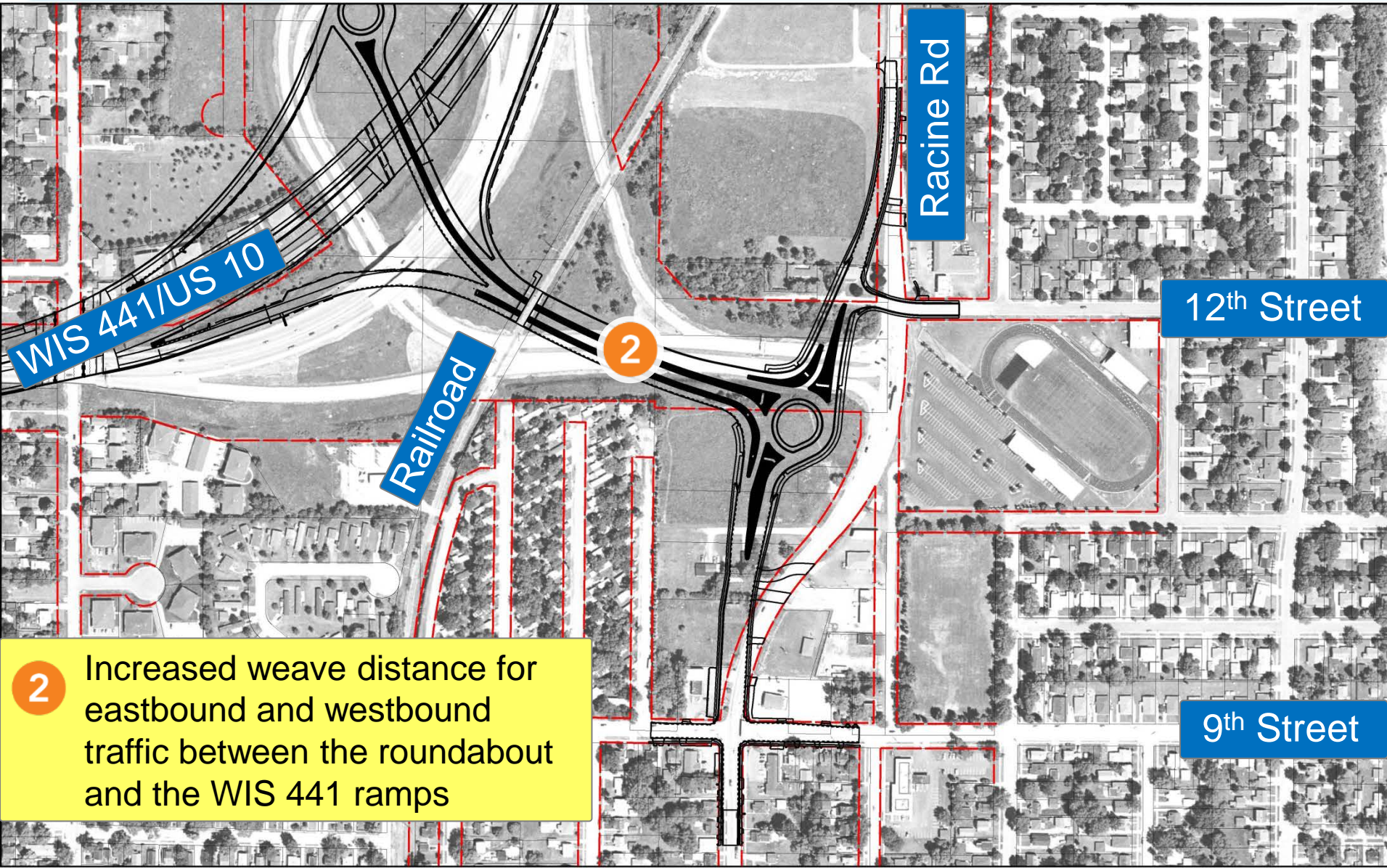
- Desire to shift roundabout back to the east
- Minimize impacts to mobile home park
- Improve vision for vehicles turning at 12th street

Refined Design Alternative



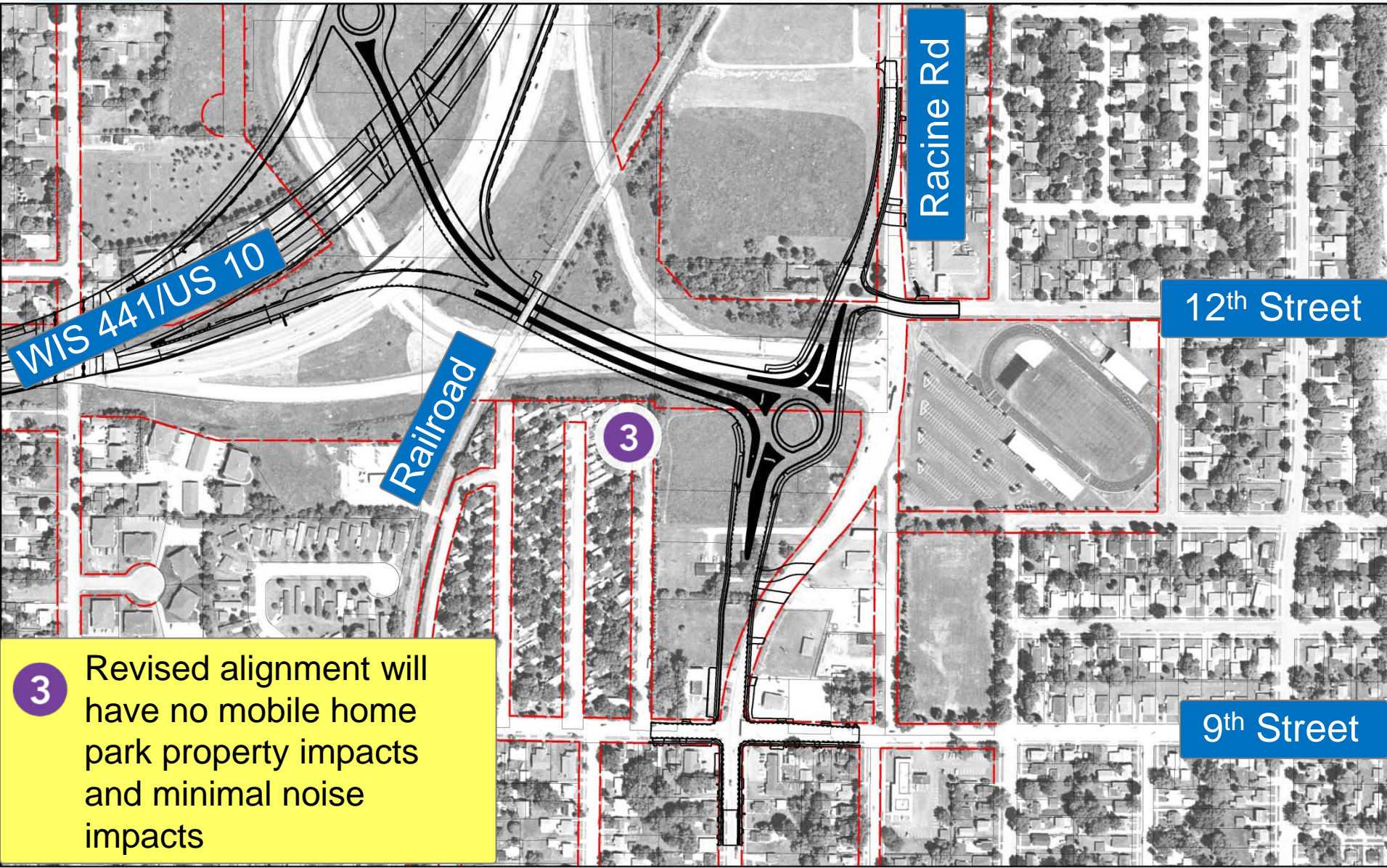
1 Improved alignment that minimizes curves and enhances vehicle sight distance along County P

Refined Design Alternative



2 Increased weave distance for eastbound and westbound traffic between the roundabout and the WIS 441 ramps

Refined Design Alternative



WIS 441/US 10

Railroad

Racine Rd

12th Street

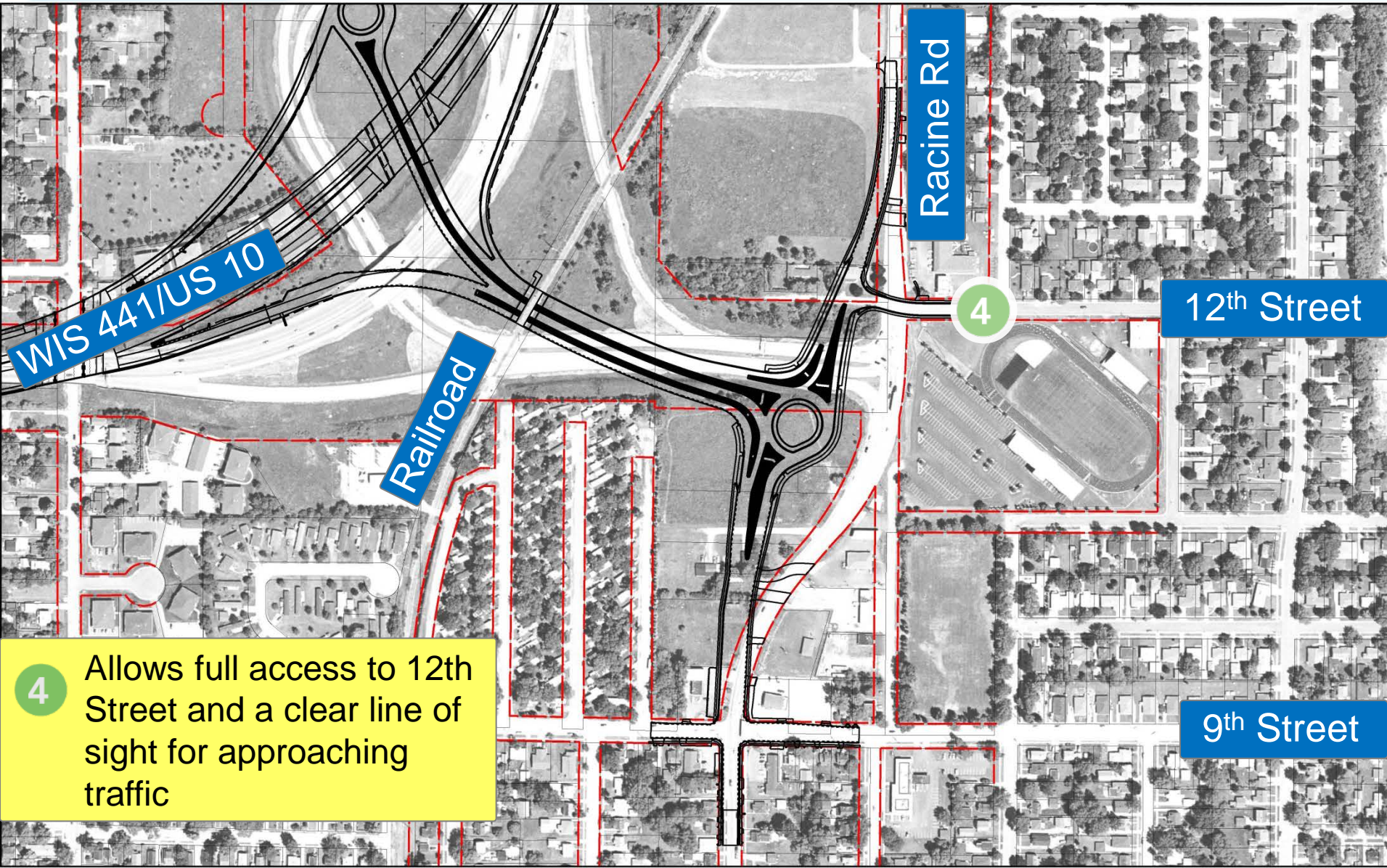
9th Street

3

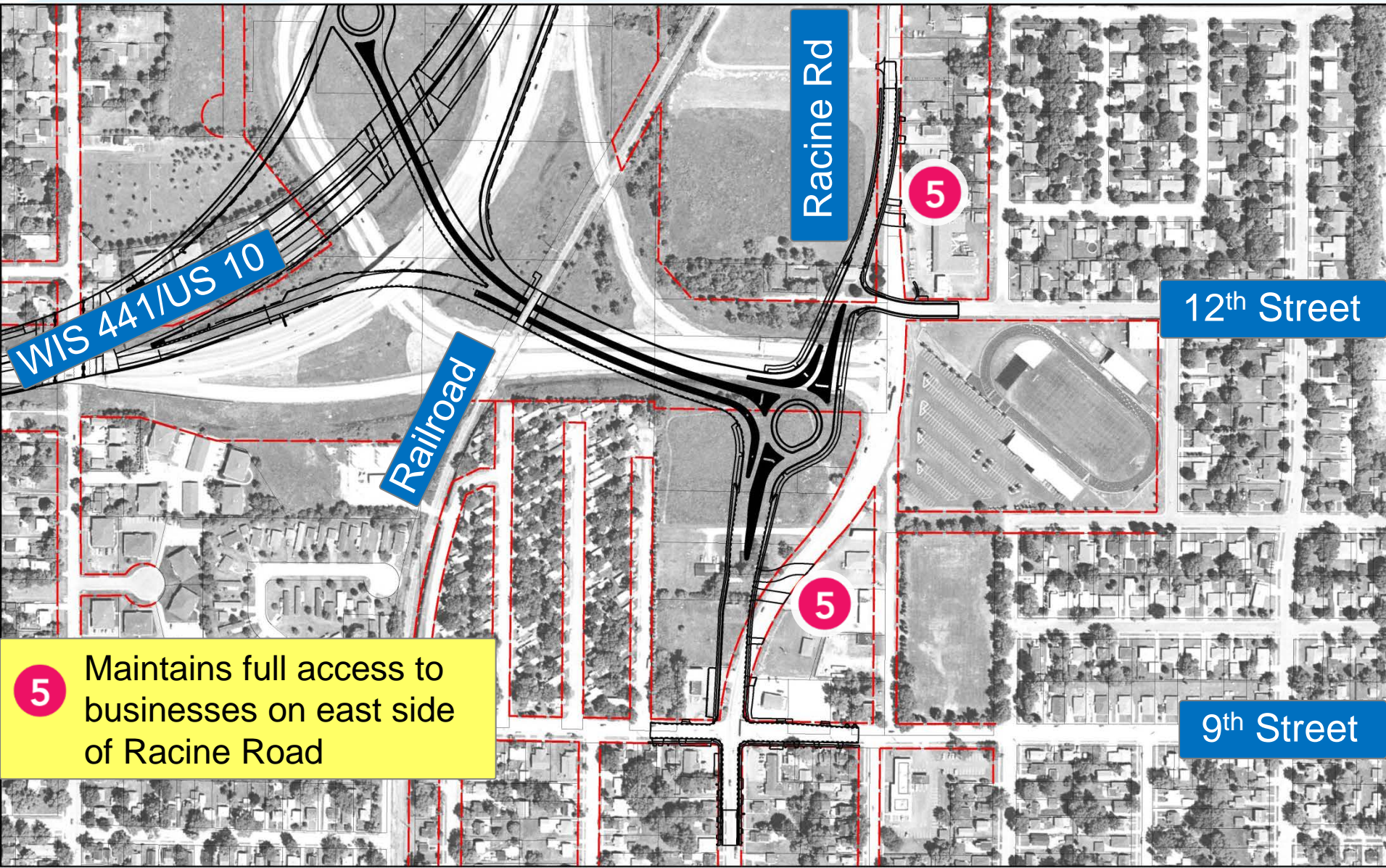
3

Revised alignment will have no mobile home park property impacts and minimal noise impacts

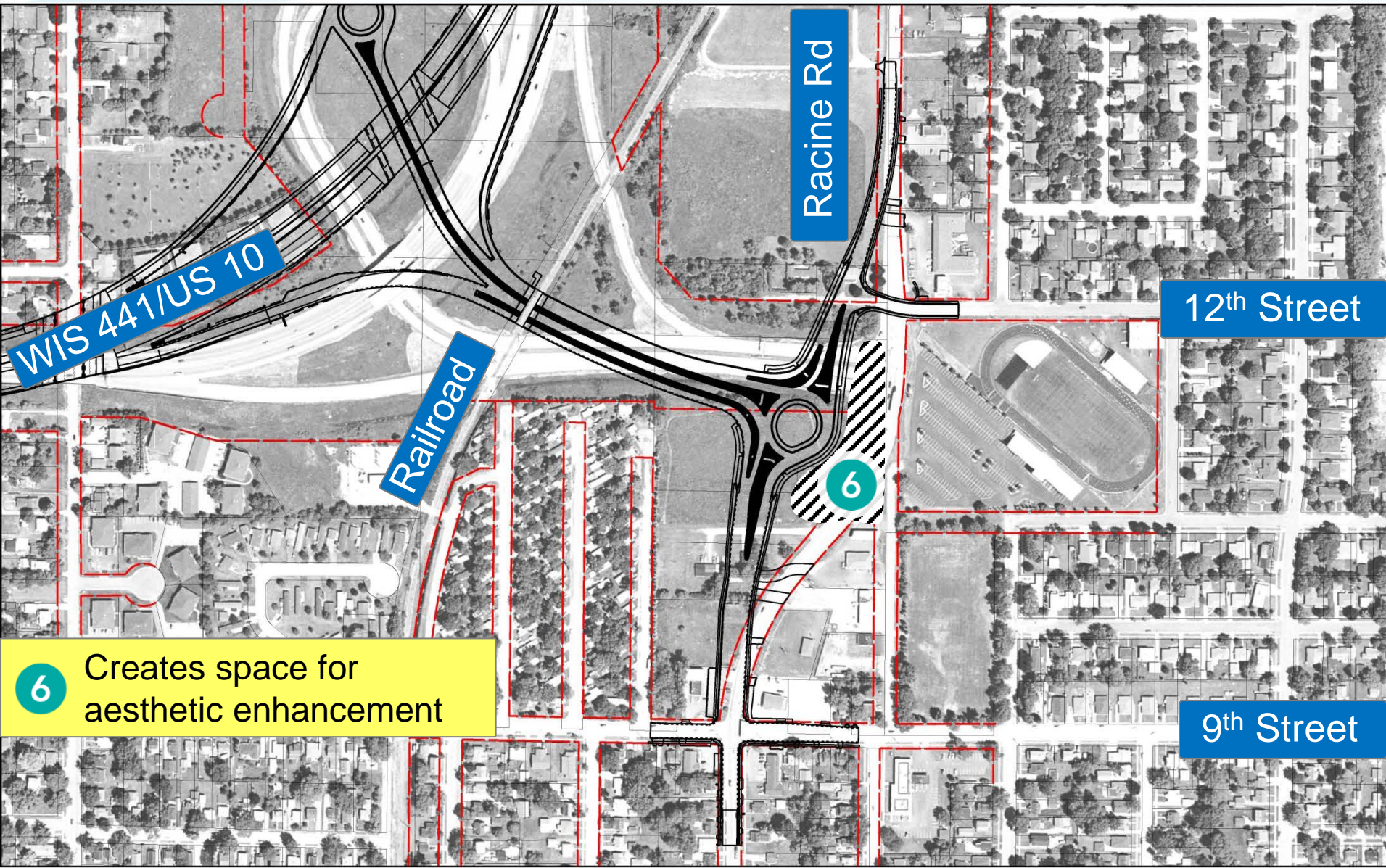
Refined Design Alternative



Refined Design Alternative



Refined Design Alternative



Refined Design Alternative

Impacts

- Real Estate
 - 1.84 acres of additional fee acquisition
 - 0.07 acres additional temporary limited easement
- Wetlands
 - 0.14 acres of additional impact

Next Steps

- Community and municipality feedback
- Move forward with final design
- Real estate acquisition process

Upcoming PIM

- Corridor-wide public involvement meeting on March 2, 2015 (Monday)
 - Butte des Morts Elementary School, 501 Tayco Street, Menasha; 5 – 7 p.m.
 - Provide updates on many topics, including:
 - Design
 - Construction schedule and impacts
 - Roundabouts

Communicating With You



Home | Construction updates | Contact us
Site index | Help | En Español | Hmong | WisDOT home



Get info on the upcoming
WIS 441 Tri-County Project »

US 41 Project



OVERVIEW

TRAFFIC

CLOSURES

MAP

GALLERY

NEWS & MEETINGS

RESOURCES



WIS 441 Tri-County Project

Construction begins 2016

OVERVIEW

PREVIOUS STUDIES

SCHEDULE

CONTACTS

IMPROVED INTERCHANGES

SPECIAL PROJECT FEATURES

MEETINGS

WIS 441 Tri-County Project

The Wisconsin Department of Transportation (WisDOT) is developing plans to reconstruct the US 10/WIS 441 freeway. The WIS 441 Tri-County Project will reconstruct and expand US 10/WIS 441 from four to six lanes from Cold Spring Road



[Download Map](#)

- WisDOT will continue to keep public informed
 - Project web presence
 - Media outreach
 - Newsletters
 - Public meetings
- Feedback

www.us41wisconsin.gov/wis441

Communicating With You

- Comment forms
 - Submit today or via mail
 - Submit comments by February 10, 2015
- Join project email list
 - Provide email address on sign-in sheets
 - Send email to project staff

[illegible]

WIS 441 Tri-County Project