

APPROXIMATE TIMEFRAME: EARLY MARCH 2020 TO PRIOR TO MEMORIAL DAY 2020



BLUFF LANE TO WINDMILL LANE

- OPEN TO TWO WAY TRAFFIC
  - SHOULDER CLOSURES
  - LANE SHIFTS
  - PARKING LANE CLOSURES
  - SIDEWALK CLOSURES
  - DAYTIME LANE CLOSURES WITH FLAGGING OPERATIONS



WINDMILL LANE TO CTH F

- CLOSED TO THRU TRAFFIC
- LOCAL ACCESS ONLY
- SEE STAGE 2 DETOUR



COUNTY F TO YMCA CROSSWALK

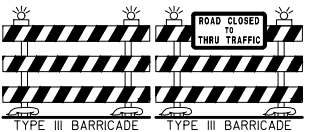
- CLOSED TO ALL TRAFFIC
- SEE STAGE 2 DETOUR



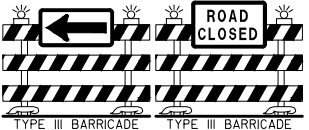
TEMPORARY DRIVEWAYS

- GIBRALTAR SCHOOL USE TEMPORARY ASPHALT DRIVEWAY FROM OLD GIBRALTAR ROAD
- FISH CREEK GRILL USE TEMPORARY GRAVEL DRIVEWAY FROM COUNTY F

(A) ROAD CLOSED TO THRU TRAFFIC  
LOCAL TRAFFIC ONLY



(B) HARD CLOSURE  
NO ACCESS  
DIVERT TRAFFIC TO TEMP ROADWAY



(C) HARD CLOSURE  
NO ACCESS

