

# West Waukesha Bypass

## PROJECT UPDATE



JANUARY 2019

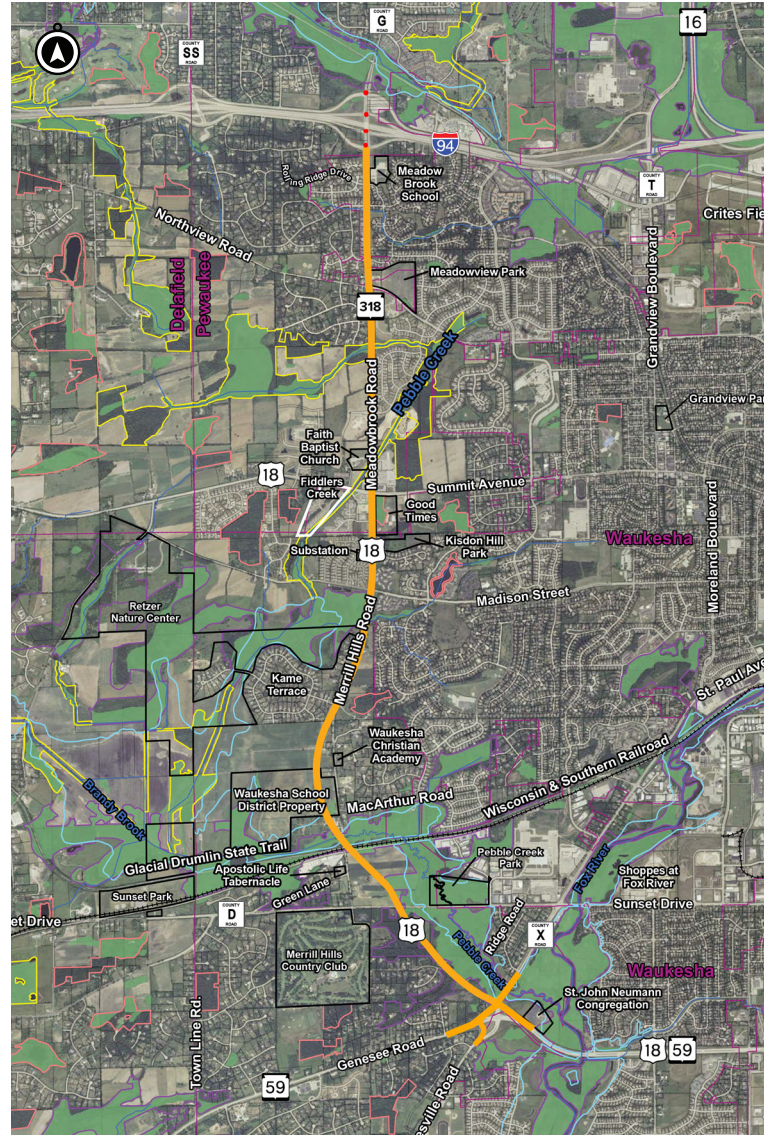
Work on Phase 2 of the West Waukesha Bypass continues into 2019. All tree clearing has been completed along the new corridor. During the fall, earthwork operations were performed throughout the project limits and the following operations are underway:

- Grading for the new southbound lanes of Saint Paul (County X), between Ridge Road and WIS 59.
- Grading on the new Bypass alignment, from WIS 59 North to Sunset Drive. Sections of the southern portion are complete.
- Roadway grading and ditch grading are partially complete along WIS 59, east and west of the new Bypass intersection.
- Grading on the new Bypass alignment, from Sunset Drive to the Wisconsin Southern Railroad and from Pebble Creek, north of MacArthur Road.
- Grading is mostly complete for the extension of MacArthur Road, west of Merrill Hills Road to the new Bypass.
- Excavation and backfill activities continue through the winter along Sunset Drive, east of the Bypass.

Through the winter, construction will be focused on bridge, box culvert and storm sewer at multiple locations along the project including the following operations:

- Bridge construction on County X, with girders set on the new southbound bridge over Pebble Creek.
- Bridge construction on land bridges in wetland areas of the new Bypass alignment, between WIS 59 and Sunset Drive.
- Box culvert construction west of Merrill Hills Road, south of Madison Street.

Project completion is scheduled for late fall of 2019.



*West Waukesha Bypass Project Limits*

### CONTACTS:

**John Kanzenbach, Construction PM**  
John.Kanzenbach@dot.wi.gov  
(262) 548-6467

**Brad Bacilek, Project Leader**  
BBacilek@benesch.com  
(414) 305-5275

**Heather Weber, Construction Communications**  
heatherweber@gmoxie.com  
(414) 704-6422