

US 51 Improvement Project

6918-01-72

City of Portage

Ontario St. to E Pleasant St.

Virtual Preconstruction Presentation

March 2nd, 2021 5:00 p.m. – 6:00 p.m.

Construction Team

WisDOT Project Manager – Gregory Payne

Project Leader – Alex Bromley

Project Inspectors

- Kevin Speth
- James Rinzel
- Jeremy Rach
- Don Carpenter

Prime Contractor



Questions during the presentation?

Questions will be answered at the end of the presentation.

Hopefully, this presentation will help answer most.

Questions can be emailed during or after presentation to Alex Bromley at abromley@westbrookeng.com

We will have a weekly email update – please let us know if you would like to be added to the distribution list



Questions? Email abromley@westbrookeng.com

General Project Improvements

- Construction will begin Mid-March and be completed in November 2021
 - Ontario St. to E Pleasant St.
- Improvements
 - Replacing pavement and base material
 - Intersection improvement at DeWitt St and Wisconsin St.
 - Pedestrian crossing improvements
 - Replacement of Portage Canal Culvert
 - Streetscaping and lighting
 - Additional Levee Trail connections



Questions? Email abromley@westbrookeng.com

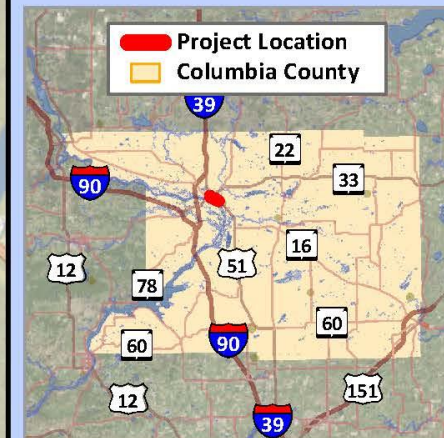
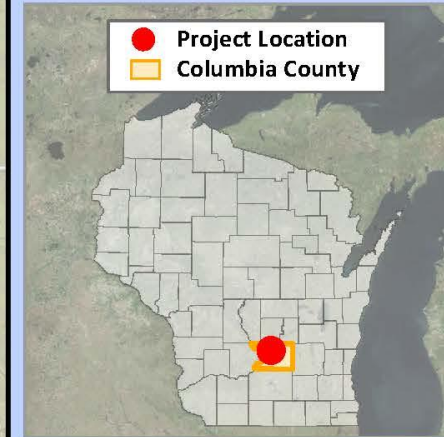


Legend

— Project Limits

Project Location

Project I.D. 6918-01-02
 City of Portage
 Wisconsin & Dewitt Streets
 (Ontario Street – East Pleasant Street)
 USH 51
 Columbia County



Project Impacts

- Full construction season
 - Mid-March 2021 to November 2021
- Traffic
 - Detoured
 - Open to Local Traffic and EMS
- Construction
 - Two main construction stages

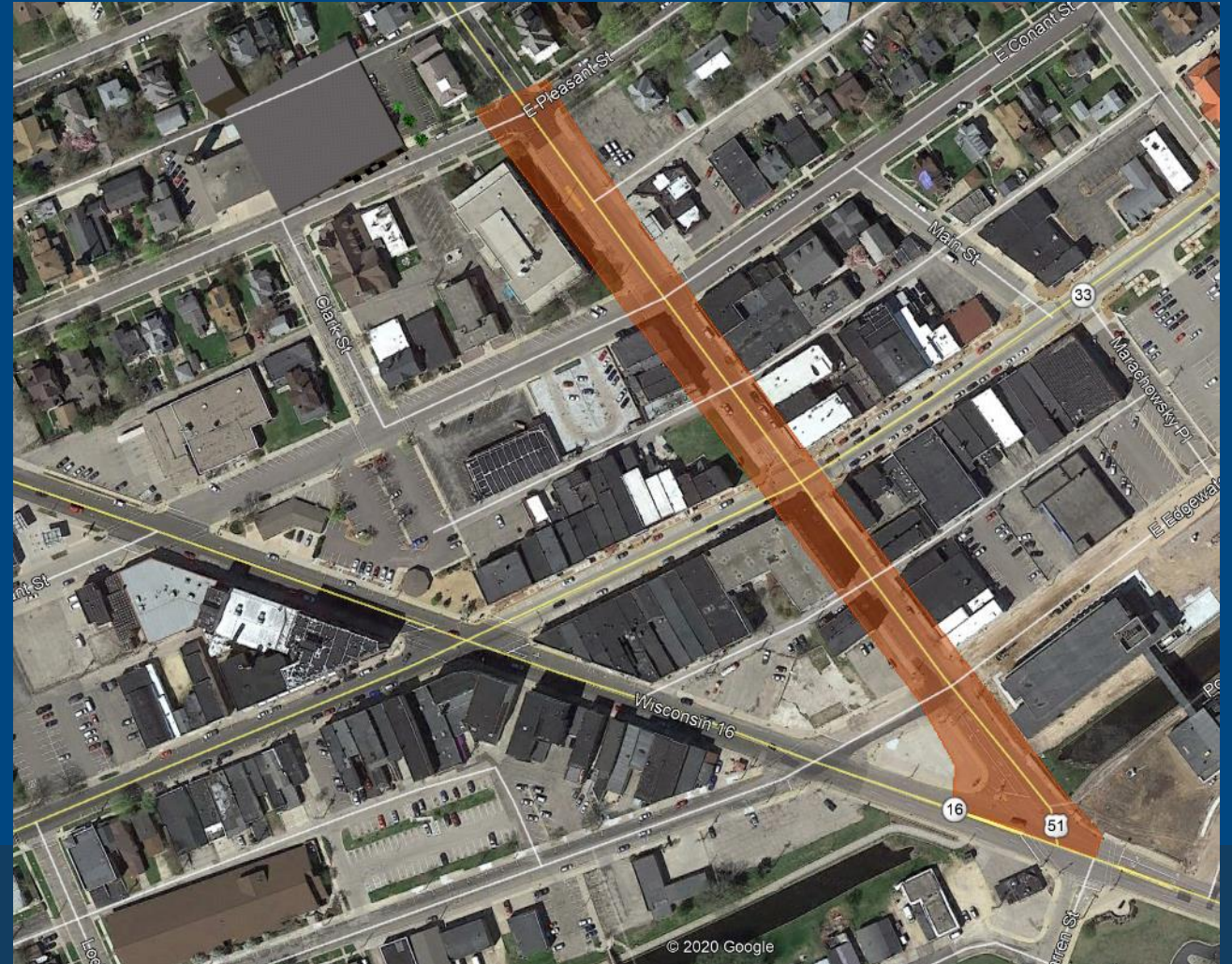


Questions? Email abromley@westbrookeng.com

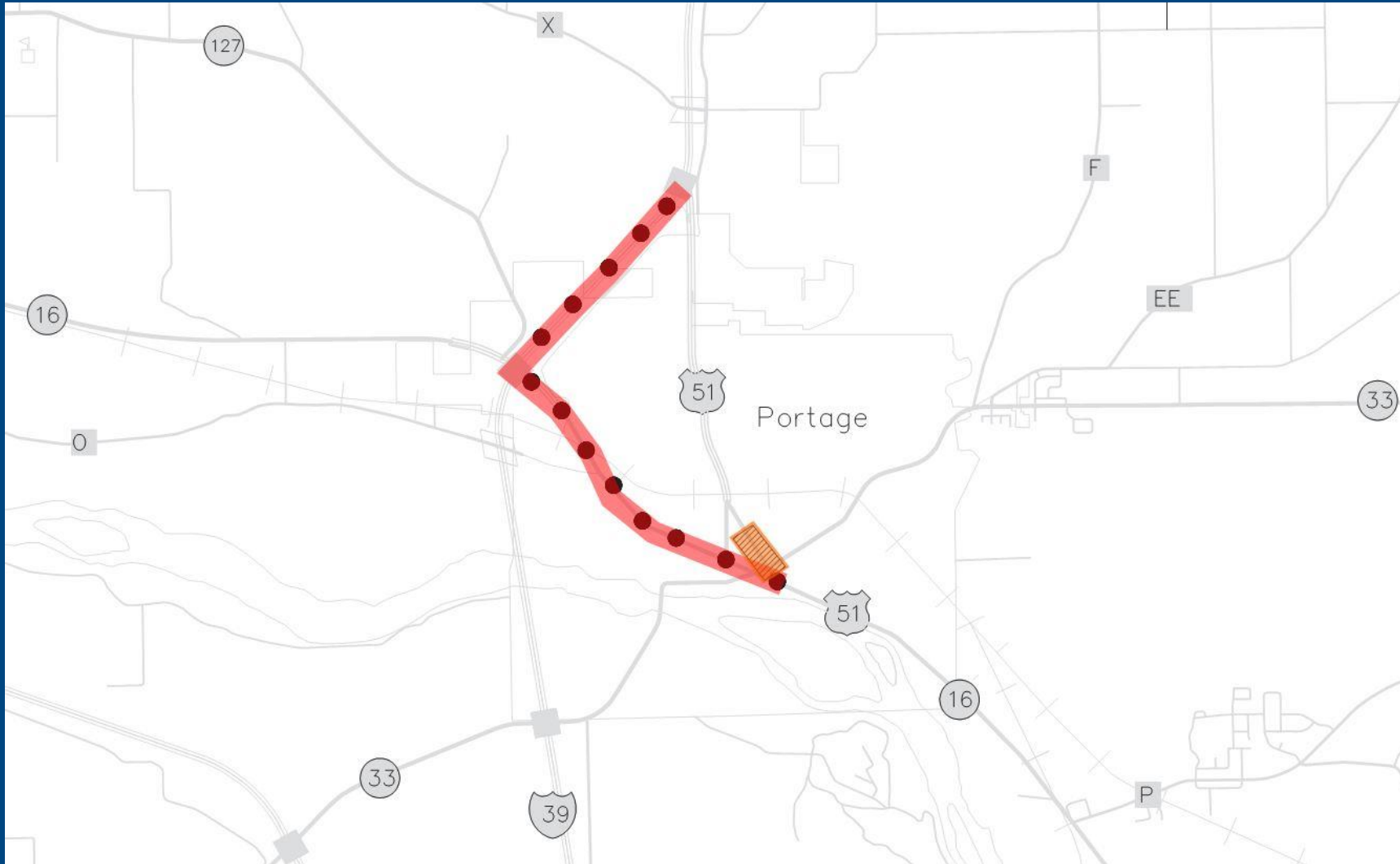
Stage 1 Construction

E Pleasant St to Wisconsin St. (USH 51 NB)

- Expected work timeframe
Mid-March – Mid-May
- DeWitt St traffic is detoured
using state routes
- Open to local traffic (garbage
pick-up, business access)
- Reconstructing intersection
of DeWitt St and Wisconsin St



Stage 1 Detour (WIS 16 to I-39)



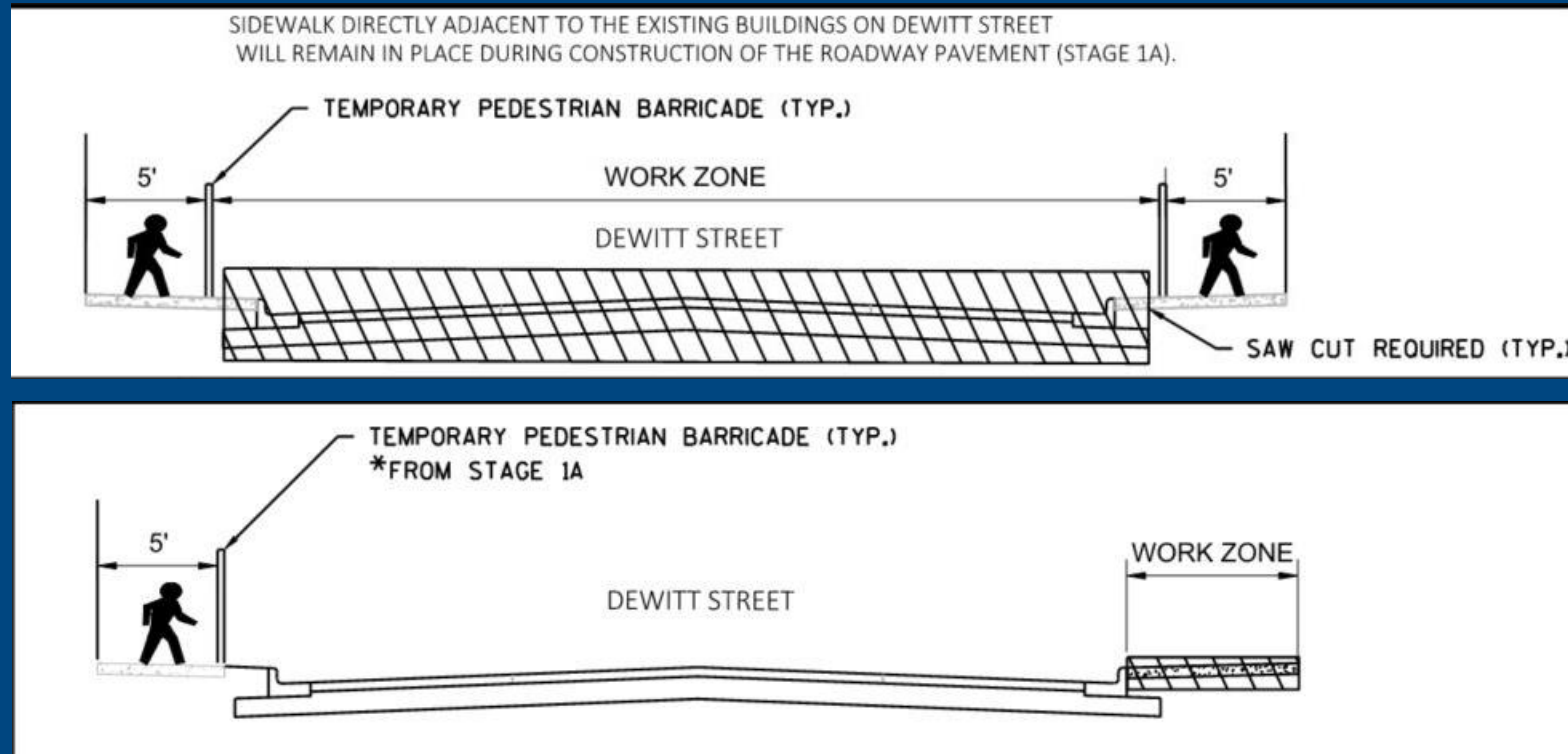
Questions? Email abromley@westbrookeng.com

Business and Residential Impacts

- Pedestrian Access
 - Access maintained
 - Temporary crosswalks
 - Sidewalk replaced on one side at a time
- Property Access
 - Access maintained
 - 5-day notice for temporary driveway closure



Business and Residential Impacts



- It is very important that business do not leave their doors open or place displays on the sidewalk.
 - Leaving a door open or placing a display on the sidewalk could create a barrier for someone in a wheelchair or with other disabilities.

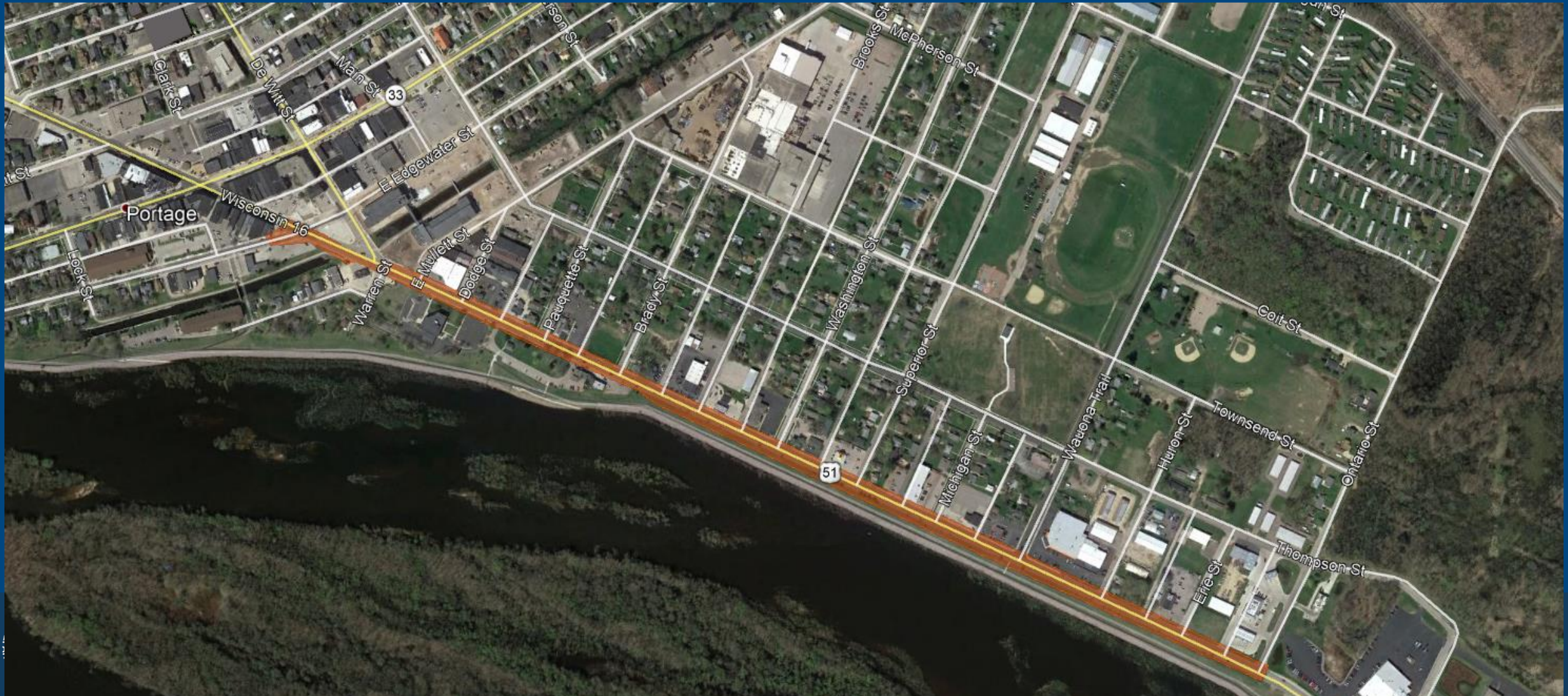
Wisconsin Street and DeWitt St. Improvement

- Pocket Park
- Trash receptacles, bike racks, trees & plantings
- Decorative light poles



Stage 2 Construction

Wisconsin Street (Edgewater St to Ontario St)



Stage 2 Construction

Wisconsin Street (Edgewater St to Ontario St)

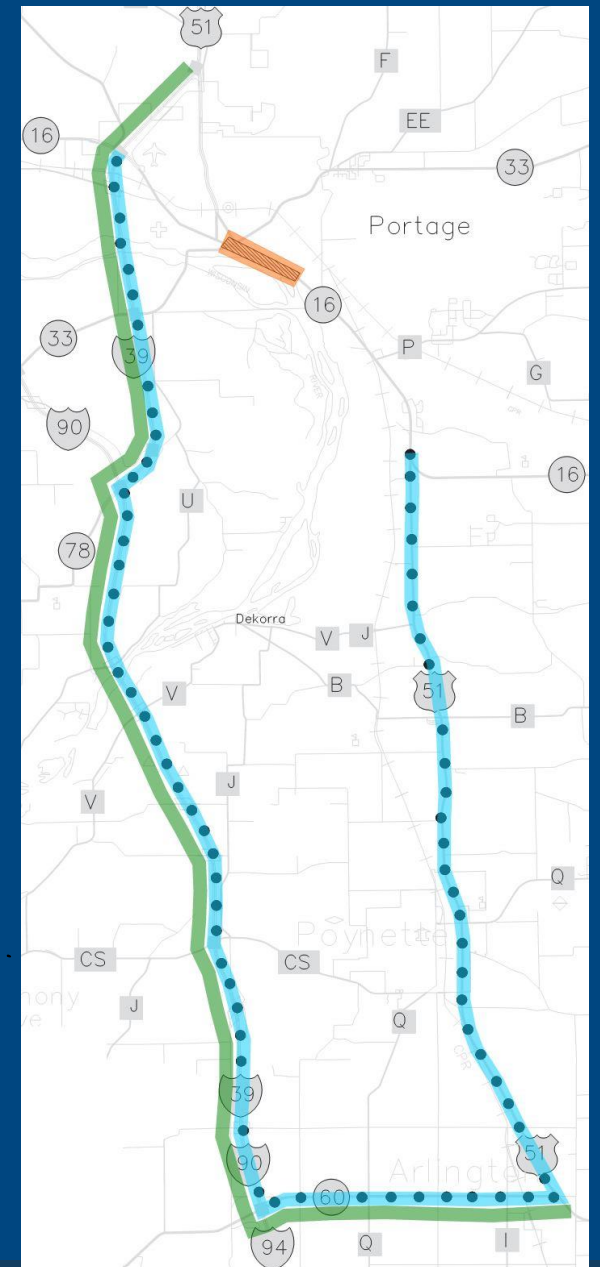
- Expected work timeframe
Mid-May 2021 – November 2021
- DeWitt Street open to traffic but closed at intersection of Wisconsin St
- US 51 & WIS 16 traffic detoured using state routes
- Wisconsin St open to local traffic (garbage pick-up, business access)
- Two-week hard closure of Wisconsin St to install Portage Canal culvert
- Ice Age National Scenic Trail/ Tow Path on Temporary Route



Questions? Email abromley@westbrookeng.com

Stage 2 Detour

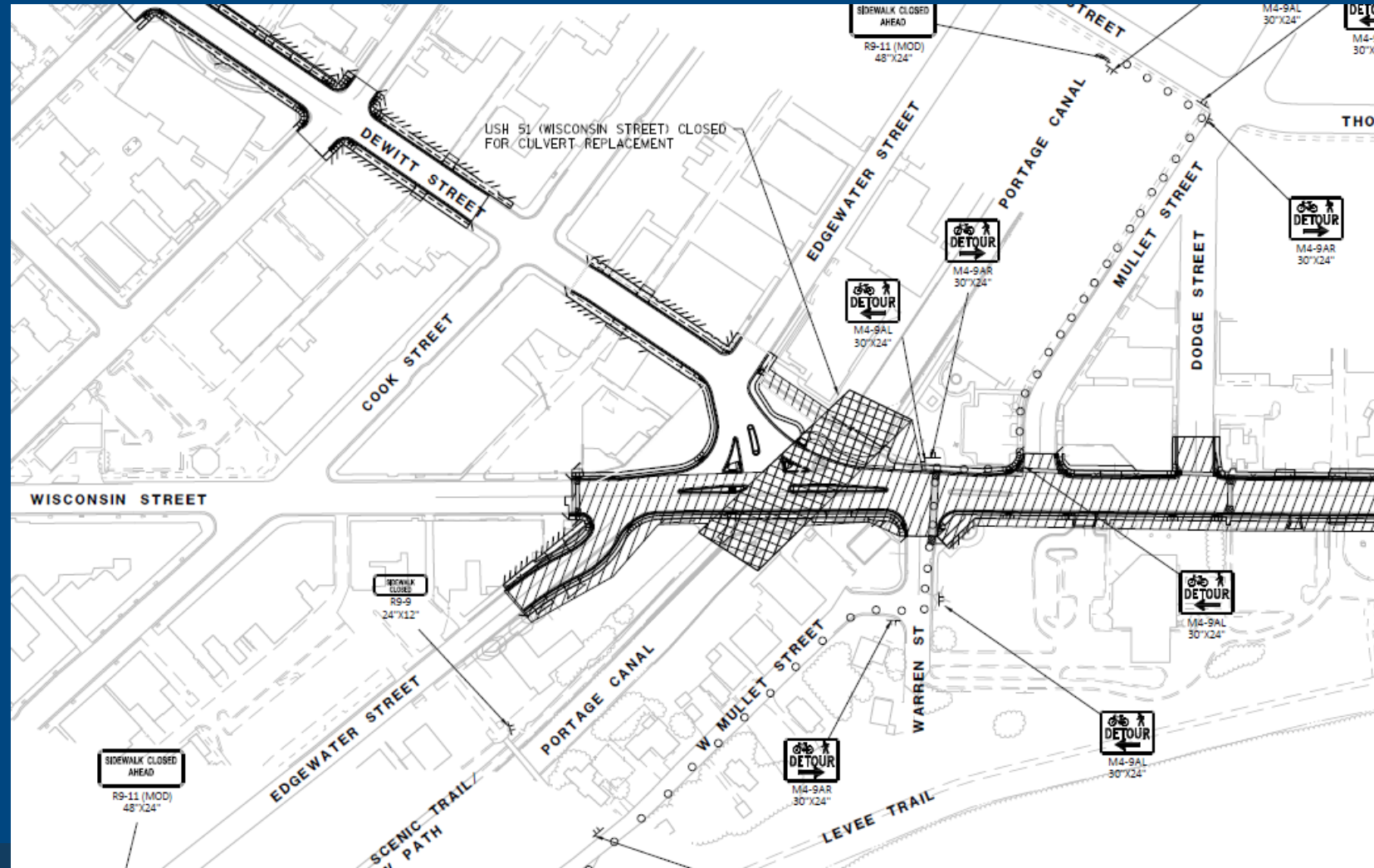
- US 51 detoured using WIS 60 and I-39
- WIS 16 detoured using US 51 to WIS 60 to I-39



Questions? Email abromley@westbrookeng.com

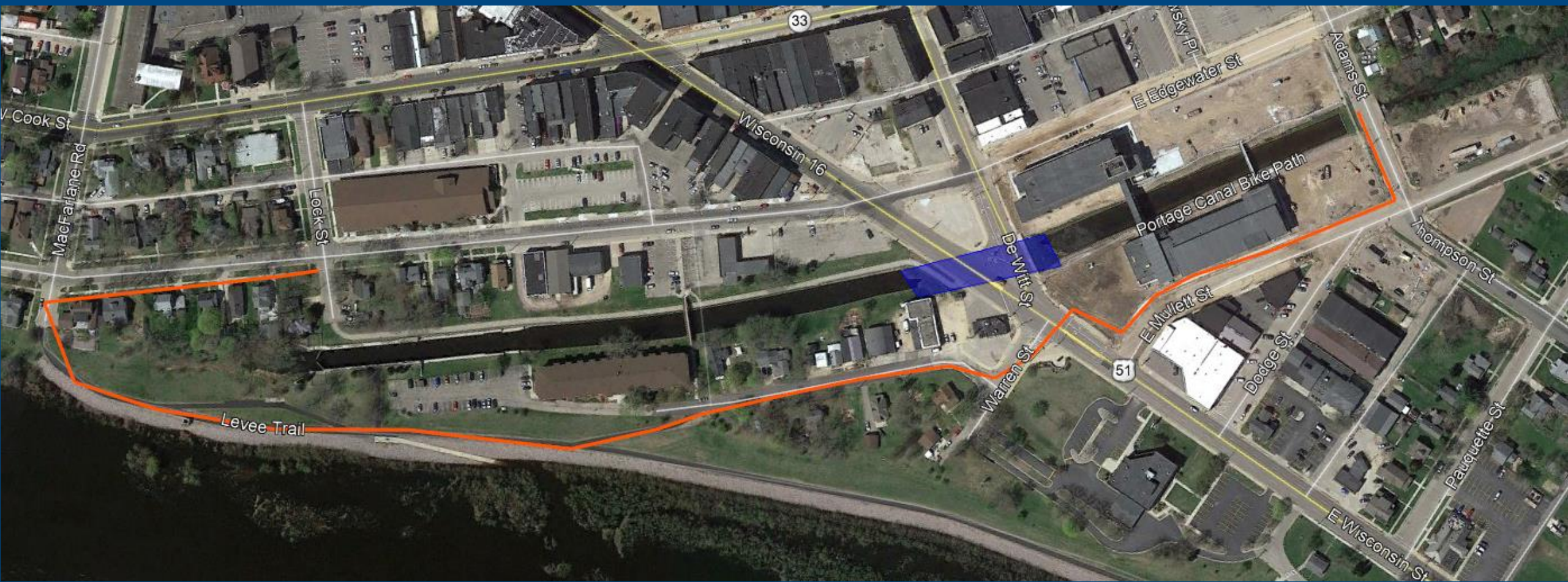
Two-Week Closure of Wisconsin St

- Hard closure of Wisconsin St at Canal
- Anticipated to begin third week of May
- Ice age trail will be detoured



Questions? Email abromley@westbrookeng.com

Ice Age Trail Detour



Questions? Email abromley@westbrookeng.com

Business and Residential Impacts

- Pedestrian Access
 - Access maintained
 - Temporary crosswalks
 - Sidewalk replaced on one side at a time
- Residence/Property Access
 - Access maintained
 - 5-day notice for temporary driveway closure



During Construction

- Field staff will be on-site during construction to address questions or concerns affecting local businesses and residents.
- Send weekly updates via email describing the project progress and upcoming activities
- WisDOT project website with progress updates
- Permitting temporary signs if desired by the City/Businesses



Questions? Email abromley@westbrookeng.com

Business Signage Examples



A billboard tied to the "Marshfield Digs Progress!" advertisements alerts potential customers to open businesses.



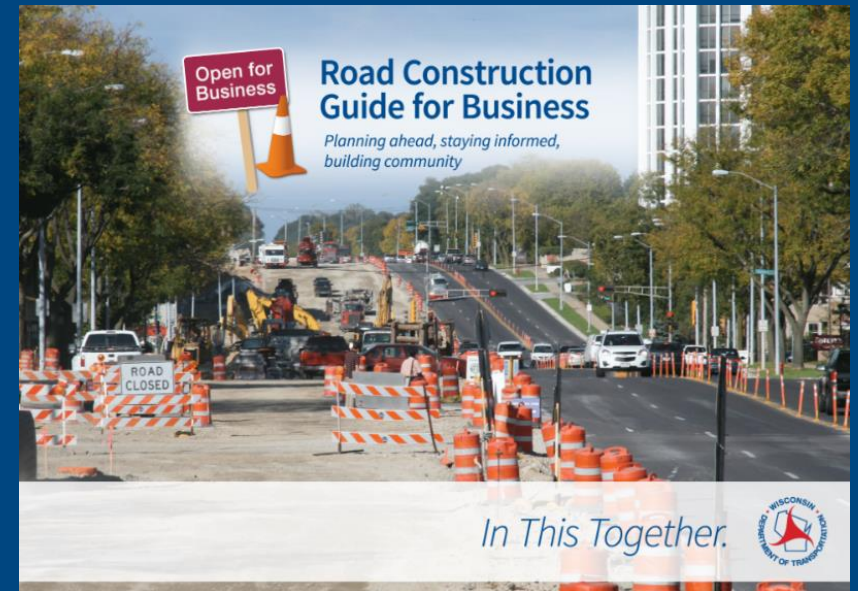
Strategically placed signs direct drivers to open businesses downtown.



Business Coordination

We're In This Together!

- Visit wisconsindot.gov/together
 - Tips, tools and resources
 - New (2021) business coordination guide
- Project team is here to help
 - What information would help you...
 - Inform customers about the project?
 - Coordinate with suppliers?
 - Communicate with employees?



Questions? Email abromley@westbrookeng.com

Q & A

- Email questions to Alex Bromley abromley@westbrookeng.com and note if you want to receive weekly updates
- WisDOT Project Manager Gregory Payne at gregory.payne@dot.wi.gov or call at 608-242-8058



Questions? Email abromley@westbrookeng.com