

Annual Project Summary Report

(March 1, 2018 through February 28, 2019)

This Annual Project Summary Report for the St. Croix Crossing Project is developed in accordance with the Amended Section 106 Memorandum of Agreement (MOA) and the Riverway Memorandum of Understanding (MOU) which are included in the 2006 Supplemental Final Environmental Impact Statement (SFEIS), the 2012 Re-evaluation of the SFEIS and the Federal Highway Administration's (FHWA) Record of Decision (ROD).

This report describes the actions taken by FHWA, MnDOT, WisDOT and other agencies between March 1, 2018, and February 28, 2019, to implement the St. Croix Crossing Project and the terms of the Amended MOA and Riverway MOU. This report has been distributed to the signatories of the MOA and MOU, interests and members of the Stakeholder Group. This report is also available on the project website www.mndot.gov/stcroixcrossing.

Major actions either ongoing or completed March 1, 2018 thru Feb. 28, 2019, include:

- River bridge substructure/superstructure - portions complete/ongoing
- Minnesota Approach Bridges - portions complete/ongoing
- Minnesota Roadway—portions complete/ongoing
- Wisconsin Roadway—portions complete/ongoing
- Mitigation Items—items complete/ongoing

Construction work began on the St. Croix Crossing Project in the spring 2013 and the new bridge portion was opened to traffic on August 2, 2017. The Lift Bridge is being converted is expected to be substantially complete as a bicycle/pedestrian/boat facility by June 2019, along with the full loop trail accommodating users.

Design Accomplishments:

- A) Wisconsin Loop Trail – WisDOT continued to develop final design plans for the loop trail from the Lift Bridge, up the hill, to STH 35. Trailheads and parking areas are also included. A March 13, 2018 letting was held by WisDOT and contract was awarded to Mattison Contractors.

- B) Landscaping – Minnesota’s 3rd of 4 landscaping projects --- designers developed the final plans and specifications to plant trees/shrubs/perennials/grasses to the east of TH95, from Bayport up to the Lift Bridge area. A March 23, 2018 letting was held by MnDOT with a contract written with Hoffman and McNamara Company.
- C) Landscaping – Minnesota’s 4th of 4 landscaping projects --- designers developed the final plans and specifications to plant trees/shrubs/perennials/grasses near the Stillwater Lift Station and to fill in any areas left out of the previous 3 landscaping projects. An October 26, 2018 letting was held by MnDOT with a construction contract written with Hoffman and McNamara Company.
- D) Financial Management Plan – Annual update: completed by FHWA, MnDOT and WisDOT.
- E) Permitting/agency approvals:
 - i. MnDOT/WisDOT requested and obtained permits, modifications of permits, agency approvals and other documents to meet the project schedule.

Right of Way Accomplishments:

- A) Minnesota and Wisconsin property acquisition activities occurred to allow the construction schedule to be met. All Right of Way for the roadways and new bridge has been acquired. Final real estate acquisitions for the loop trails and lift bridge conversion project are on-going. Turn backs of excess MnDOT property is on-going.

Mitigation Package Accomplishments – Status of “During/After Construction” items:

Remaining Riverway MOU related:

- A) “*Bluffland restoration*” – removal of unnecessary pavement from east end of Lift Bridge to STH35 and old CTH E occurred in Wisconsin.
- B) “*Kolliner Park: removal of non-historic element to allow reversion to “natural state”*” -- WisDOT removed non-historic elements from Kolliner Park such as asphalt pavements and the residential house and warehouse. Also did ongoing coordination with the signatory agencies that resulted in activities which eliminated additional impact to the natural environment.
- C) “*Public boat access (locational study, environmental study and wetland mitigation by MnDNR)*” -- design has been completed for a MnDNR boat launch/parking area adjacent to the new river bridge in Minnesota. Wetland impacts have been mitigated for with the regulating agencies. MnDNR has requested approval from Union Pacific and others to construct.
- D) “*Completion of loop trail system...*” – Majority of loop trail has now been constructed in both Minnesota and Wisconsin. The upper loop trail in Minnesota was constructed in 2018, with connections made to the lower loop trail. A parking lot in Minnesota was also constructed in 2018 along TH95. Parking for loop trail users in Minnesota is also being accommodated along the Treatment Plant Access road, just north of the new bridge. The Wisconsin loop trail was constructed in 2018 between the Lift Bridge and the new County Road E interchange. Trail heads with parking lots in Wisconsin were also constructed in 2018. Interpretive panels along the loop trail provide information on the adjacent area. See attached loop trail progress map, dated 2-1-19.

- a. Minor loop trail work will be completed in the spring of 2019 in both Minnesota and Wisconsin. In Minnesota, the contractor will be establishing the turf along the upper trail. In Wisconsin, the contractor will be installing all pedestrian railing as well as signing and striping from the lift bridge to the hilltop parking lot.
- b. Work on converting the Lift Bridge to bike/ped/boat use will continue until June 2019, when the Loop Trail will finally be complete and fully open to the public.

Remaining MOA related:

A) "Lift Bridge Related:"

- a. [Lift Bridge Conversion Project](#) – Conversion activities continue.
 - i. Kraemer North America, LLC was awarded the Lift Bridge Conversion Project contract on June 30, 2017.
 - ii. Construction began by Kraemer on August 2nd, 2017 and is anticipated to be completed by June 15, 2019, weather dependent.
 - iii. U.S. Coast Guard modified the lift schedule in May 2018 to daily lifts every half hour from May 15th to October 15th each year. And a 24 hour notice for the rest of the year.
 - iv. Span 6 was floated out during the summer of 2018, in order to allow boats to pass while work on Span 4 (Lift Span) occurred.
 - v. In 2018, steel repairs and painting occurred on Spans 3,5,7,8 and 9. Electrical work occurred on all spans during 2018. Mechanical work such as the drive machinery occurred in 2018 also. Painted spans are the same green color as the original 1931 paint color.
 - vi. Steel repairs, mechanical, electrical, lighting, painting and replacing the concourse are all work necessary to convert the Lift Bridge to bicycle/pedestrian/boat use.
 - vii. Dockwall removal and shoreline restoration will also occur after the Lift Bridge is converted.
 - viii. Project information can be found at <http://www.dot.state.mn.us/metro/projects/liftbridge/>



Recent view of Chestnut Street, looking east to the Lift Bridge



Future animated view of the converted Lift Bridge

- B) *“Stillwater Commercial Historic District – Parking lot”* – WisDOT designed the Hilltop Trailhead parking lot at the old WI-35/loop trail junction at the top of the Houlton Hill. WisDOT constructed the parking lot during the 2018 season.

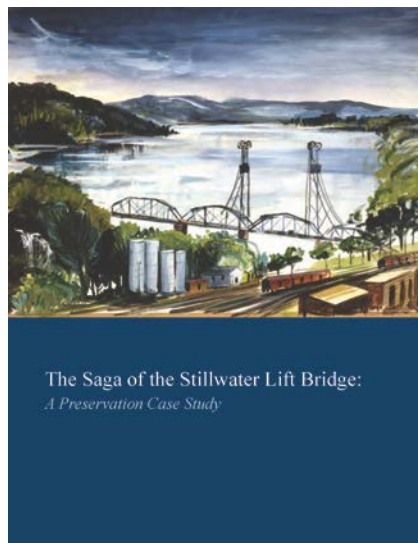


Hilltop Trailhead Parking Lot in Wisconsin being paved



Hilltop Trailhead Parking Lot in Wisconsin

- C) “*Lift Bridge Publication*” – Washington County Historical Society was hired in 2015, but the contract was terminated and a professional/technical services consultant was then hired to complete the Lift Bridge Publication. Because of this change of vendors, an amendment to the Amended Section 106 MOA was necessary in early 2016. Since then, the Lift Bridge Publication was drafted and reviewed by the regulating agencies during 2018. The Publication is anticipated to be finally distributed in March/April of 2019. In accordance with the MOA, hardcopies and e-books are to be distributed to all MOA signatories, invited signatories and concurring parties, along with the e-book provided on the St. Croix Crossing Project, Lift Bridge Conversion Project and MnDOT’s Historic Bridges websites. Additional hardcopies are also available for purchase at the Minnesota’s Bookstore, operated by the Minnesota Department of Administration.



Front cover of the Lift Bridge Publication

See attached “Status of Cultural Resource Mitigation as of 1/23/19”. Also, the complete listing and the current implementation status of the Section 106 mitigation items is found in the attached “Summary of Preferred Alternative Mitigation Items”.

Construction Accomplishments:

A. Lift Bridge:



View of Lift Bridge from Lowell Park – Span 9 work



View of Lift Bridge from Lowell Park – boat passage thru Span 6



View of Lift Bridge from Lowell Park – Span 9 and Span 8 work



View of Lift Bridge from Lowell Park – lift span tower work



View of painted lift bridge trusses



View of Lift Bridge from MN bluff – Span 6 being replaced



View of Lift Bridge from Lowell Park – Span 3 work



View of Lift Bridge from Lowell Park – winter work in 2019

B. Superstructure for the new river bridge by Lunda/Ames Joint Venture:

a. The new bridge opened to vehicular traffic on August 2, 2017.

i. For the 1 year anniversary of the new bridge:

1. Traffic formerly on Lift Bridge: 18,000 vehicles/day
2. Traffic on new bridge – Sept. 2017—from WisDOT's website—
26,000 vehicles/day
3. Traffic on new bridge – June 2018—from WisDOT's website—
29,000 vehicles/day
4. Traffic forecasted to cross the new bridge in 2030 – from SFEIS –
48,000 vehicles/day
5. Crash rates on TH 95 were reduced over that year.



View of new bridge driving lanes

- b. Final landscaping, vegetation establishment, and restoration of wetlands was completed under the new bridge and a Notice of Termination (NOT) was obtained in October 2018 for MPCA's National Pollutant Discharge Elimination System (NPDES) permit.



View of established vegetation under new bridge



View of established vegetation under new bridge

C. Minnesota Roadway:

- i. During 2018, the TH 36 and TH 95 roadway approach operated efficiently.



View of operating roadway in Minnesota

- ii. Punch list items were completed for the MN roadway contract with Ames/Lunda JV.



View of storm sewer punchlist item work

D. Minnesota: Landscaping along the east side of TH95 from Bayport to Chestnut Street and the interchange area was installed in 2018 and will be finalized in the spring of 2019. 4,291 trees/shrubs/vines/perennials/native sod were installed consistent with the Visual Quality Manual.



View of landscaping beds being prepared



View of landscaping being placed around state exit sign in Minnesota

E. Wetland restorations in Minnesota adjacent to new bridge and at Xcel Dockwall:



View of wetland restorations adjacent to the new bridge in Minnesota



View of wetland restorations at the Xcel Dockwall in Minnesota

F. Minnesota parking lot and Loop Trail:



Parking Lot adjacent to TH95, north of Sunnyside Marina



Biking on MN upper loop trail, looking south.



Walking on MN upper loop trail, looking north.



Walking the dog, upper loop trail, looking N.



Lower Loop Trail by parking lot



Upper Loop Trail by Oasis Café



Upper loop trail by parking lot, looking N.



Loop Trail between Nelson and Chestnut Streets

G. Wisconsin Roadways:

- a. During 2018 the old highway corridors, including STH 35, STH 64, and CTH E were rehabilitated to now accommodate the local traffic. The pavement surface width was reduced in several places to allow for construction of the new loop trail or to minimize future maintenance by the Town of St. Joseph. The asphalt was milled and new asphalt pavement placed prior to transfer of the facilities. The transfer of the local roadways was completed in 2018, there is no additional work on the local roadways in 2019.
- b. During 2018, Mattison contractors continued construction of the loop trail, the trail parking areas, as well as the park and ride site, including asphalt pavement, concrete walk, landscaping with trees, shrubs, and native prairie grasses, trail signing and trail marking.

WisDOT continued to work with the County to accommodate additional features to the loop trail and trailheads in order to enhance it's future use. Mattison contractors installed all of the trails, a picnic shelter, pads for benches and bike racks, and landscaping features. The County efforts included construction of a restroom facility with a septic system. The County will continue efforts in 2019 to finish the restroom and install all of the picnic tables, benches, and garbage facilities.

Final construction activities to be completed in the spring of 2019 include the pedestrian safety railing along the old STH 64 corridor, trail marking and signing, and final landscaping installations.



Mitigation Item: Removal of the residential home and warehouse in Kolliner/Tourist Park.



Looking north at the Main Trailhead the loop trail has been paved and the county restroom facility is nearly completed.



As part of the County's effort to enhance the Main Trailhead area, the County installed a sign near the trailhead parking lot.



Looking west towards the lift bridge, the interpretive panel bases are ready for the County to install the actual panel signs.



Looking East at the removal of asphalt along the old County E corridor and restoring to a naturally vegetated state.



Looking West at the Old County E corridor no longer open to traffic after the reconfiguration of local roads and restoring the old corridor to a naturally vegetated state.



Looking East along the old STH 64 corridor after asphalt removal, prior to converting to the Loop Trail.



Looking south at the Main Trailhead - grading operations for the loop trail



Looking south at the Hilltop trailhead during grading operations.



Looking west during the local road reconfiguration at the Hilltop Trailhead.



Looking west towards the lift bridge, a crew removes the asphalt of the old highway corridor to prepare the road core for the new loop trail.



Looking west towards the lift bridge, the asphalt crews are paving the pedestrian portion of the new loop trail.



Looking west towards the lift bridge at the loop trail. The concrete resting platforms are visible along the trail. Access is provided within Kolliner Park to the City of Stillwater's vehicles to the launch site of their annual July 4th fireworks display.

Communications Efforts:

In 2018, communications of project information in both states was primarily delivered to the public through project email updates, earned media, digital media, social media, and public and private group presentations. The goal of these communications was to provide access to project information efficiently and effectively.

A. Communications Team accomplished the following in 2018:

- ☐ 21 total public and private group presentations (MnDOT and WisDOT)
- ☐ Made 279 direct contacts with the public, businesses and government entities
- ☐ Distributed 23 total project email updates to the “Metro – Hwy 95 Stillwater/St. Croix Crossing: 2018-2019 Construction” email list. (12,189 people signed up for Hwy 95 Stillwater/St. Croix Crossing: 2018-2019 Construction. 12,231 people signed up for Hwy 36 Stillwater Lift Bridge: 2017-2018 construction.
- ☐ 32% average email open rate

Regularly updated the project website with construction photos, news releases, and graphics.

- ☐ Total visits to all pages under the St. Croix Crossing directory (mndot.gov/stcroixcrossing/ - includes all sub-pages, i.e. contacts, gallery, ADA, etc.): **40,507**. On average, 4,000 visits to the website per month (March 1-Dec. 31, 2018). Most visits recorded were in September 2018.

Social media remained a priority for public engagement efforts and robust audience numbers were maintained from season to season.

- ☐ Facebook: MnDOT’s St. Croix Crossing Facebook page is now unposted and unavailable to the general public since fall 2017. There were two posts last year on the main MnDOT Facebook page:
 - June 28, 2018: Stillwater Lift Bridge returns to historic color. 9,607 people reached, 1,077 engagements.
 - August 2, 2018: Throwback Thursday: St. Croix Crossing opens to traffic. 6,794 people reached, 314 engagements.
- ☐ Twitter: Twitter account was deleted in 2017 following the opening of the St. Croix Crossing bridge.

B. During 2018 there were approximately 25 St. Croix Crossing-related stories. Media covered many angles of the project in 2018 focusing on construction activities.

The media outlet types that covered St. Croix Crossing related stories included:

- ☐ Metro dailies
- ☐ Community newspapers
- ☐ Broadcast (TV and radio)
- ☐ Web
- ☐ Trade publications

Continuing the trend from 2016 and 2017 the majority of project media coverage was positive. Some of the topics that dominated coverage included:

- ☐ Construction progress

- ☐ Loop Trail construction and completion
- ☐ Lift Bridge construction
- ☐ Highway 95 storm sewer work, closure and detour
- ☐ Traffic impacts

C. Tools used in 2018 to provide and receive project information and updates were:

☐ Websites:

- a) **St. Croix Crossing:** www.mndot.gov/stcroixcrossing/
- b) **Stillwater Lift Bridge:** www.mndot.gov/metro/projects/liftbridge
- c) **Highway 95 (north of Hwy 36) — Upper Loop Trail and drainage:**
www.mndot.gov/metro/projects/hwy95stillwater
- d) **Wisconsin Hwy 64 Loop Trail:**
<https://projects.511wi.gov/stcroixcrossing/>

☐ Project email updates (select St. Croix Crossing):

<http://visitor.r20.constantcontact.com/manage/optin/ea?v=001uV3jnccU8bbkNX8ffDiBJPZEnEPui7da6a685qTGxcCfn68jqTgtXA%3D%3D>

☐ Email: stcroixcrossing.dot@state.mn.us

Construction Cost/Schedule

A. Approximate Cost Subtotal:

Minnesota Roadway Approach	\$72M
River Bridge Foundations	\$39M
River Bridge and Ramp Bridges	\$344M
Wisconsin Roadway Approach	\$25M
Mitigation Package	\$45M

B. Construction Schedule in 2019:

1. Minnesota Landscaping – complete 3rd Phase: east side of TH95 from Bayport to the Lift Bridge area, the interchange area and fill-ins: and complete 4th phase: around the Stillwater Dockwall and fill-ins. Installations in spring 2019 and spring 2020, with 2 year warranties following the installations.
2. Minnesota Roadway: punchlist items completed in 2019.
3. Wisconsin Loop Trail and landscaping: completed by June 2019.
4. Stillwater Lift Bridge Conversion to Bike/Ped/Boat Facility: Anticipate substantial completion in June 2019, weather dependent.
5. Mitigation Package Implementation – Ongoing thru 2019

Next Steps for 2019 (Timetable will be determined by FHWA, MnDOT and WisDOT)

1. Continued Stakeholder Involvement
2. Minnesota Roadway Approach- finalize project and contract closeout
3. Minnesota Landscaping – 3rd and 4th Phase installations
4. Minnesota Loop Trail – turf establishment
5. River bridge superstructure and ramp bridges – finalize project and contract closeout
6. Wisconsin Loop Trail – pipe railing, striping, signing, landscaping
7. Stillwater Lift Bridge Conversion – ongoing construction
8. Permit Conditions and any additional agency coordination
9. Environmental Compliance and Monitoring
10. Financial Plan – annual update
11. Mitigation Package:
 - complete “During Construction” items and “After Construction” items.
12. Communications:

Communication will continue throughout the construction and mitigation efforts for the St. Croix River Crossing (SCRC) including the completion and opening of the Stillwater Lift Bridge. Our communication will be coordinated with Washington County, St. Croix County and the cities of Stillwater, Bayport, Oak Park Heights, Houlton and the Town of St. Joseph. We will also work with the Greater Stillwater Area Chamber of Commerce.

Other efforts will include, but are not limited to:

- ☐ Project email updates periodically as work continues (both Minnesota and Wisconsin)
- ☐ Mailings to businesses/residents affected by construction
- ☐ News releases/media interviews as needed
- ☐ Twitter messages as needed
- ☐ Project information in city/chamber newsletters and other communication channels
- ☐ Website updates have been ongoing since the opening of the SCRC and will continue as needed.
- ☐ Participation in community events/Greater Stillwater Chamber of Commerce functions/city events
- ☐ Public information open houses, if necessary
- ☐ Business outreach to alert the business community and the public about construction impacts such as lane closures, shoulder closures and road closures, detours and possible boat navigation issues because of construction.

13. Project Management -- Manage program schedules, resources, cost estimates, deliverables, reporting, etc. developed within the framework of the Project Management Plan’s organizational chart including regular meetings of functional groups and as needed - Project Core Team, Stewardship Councils and Executive Team.

Project Team Contact information:

MnDOT:

Michael Beer, Project Director	651-366-4358	Michael.Beer@state.mn.us
Kent Barnard, Communications	651-253-2803	Kent.Barnard@state.mn.us
Todd Clarkowski, Project Coordinator	651-366-4576	Todd.Clarkowski@state.mn.us

WisDOT:

Tim Mason, Project Development	715-833-5366	Timothy.Mason@dot.wi.gov
Diana Maas, Communications	715-635-4968	Diana.Maas@dot.wi.gov

FHWA:

Tim Anderson - MN	651-291-6126	Timothy.Anderson@dot.gov
Pete Garcia - WI	608-829-7513	Pete.Garcia@dot.gov

Websites:

- The St. Croix Crossing Project website www.mndot.gov/stcroixcrossing/ has been the main project website and will continue to exist until the completion of mitigation for the project. This website will be minimally updated to reflect mitigation efforts and will provide links to other project websites.
- However, the existing Stillwater Lift Bridge conversion website www.mndot.gov/metro/projects/liftbridge/ will be the main location for information about the project along with information about the lift schedule and other activities related to the lift bridge.
- A website for the Upper Loop Trail and work on Highway 95 was developed last year and continues to exist until the end of the mitigation and can be found at (www.mndot.gov/metro/projects/Hwy95/).
- WisDOT Loop Trail website: <https://projects.511wi.gov/stcroixcrossing/> provides information on the trail heads and loop trail in Wisconsin.
- All of these websites are interconnected so that someone viewing any of the websites will find links to the other sites. All websites also will provide a link to sign up for project email updates.

Attachments to this report include:

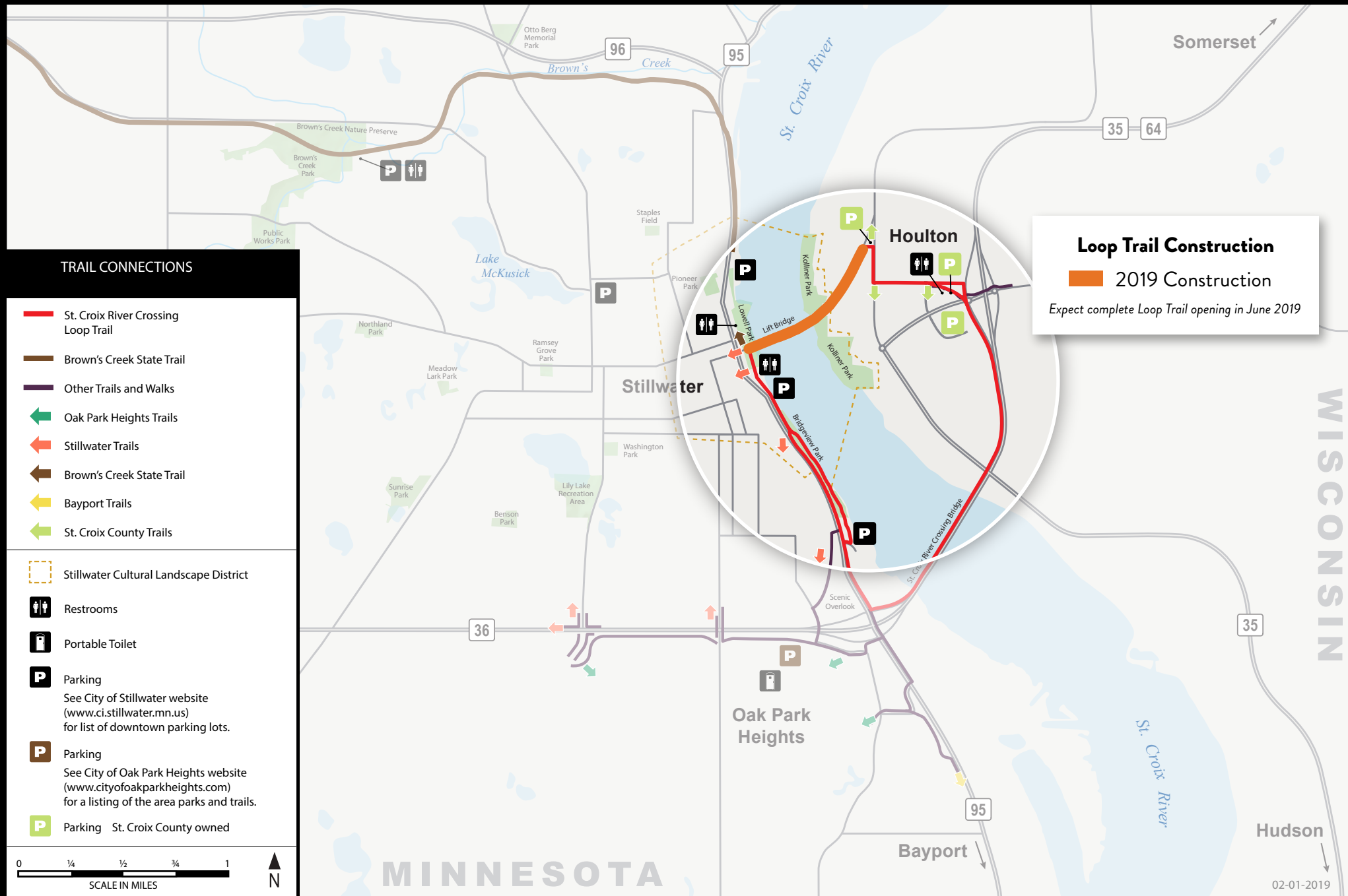
- Loop Trail Progress Map dated 2-1-19
- Status of Cultural Resources mitigation as of 1-23-19
- St. Croix Crossing Project layout and Summary of Preferred Alternative Mitigation Items—Implementation Status, dated 2-22-19



ProjectWise:/36/8214/114/predesign/projectmanagment/areamanagement/annual_project_summary_report/stcroix-annual report for march 2019-final-2-22-19.docx

ST. CROIX RIVER CROSSING LOOP TRAIL

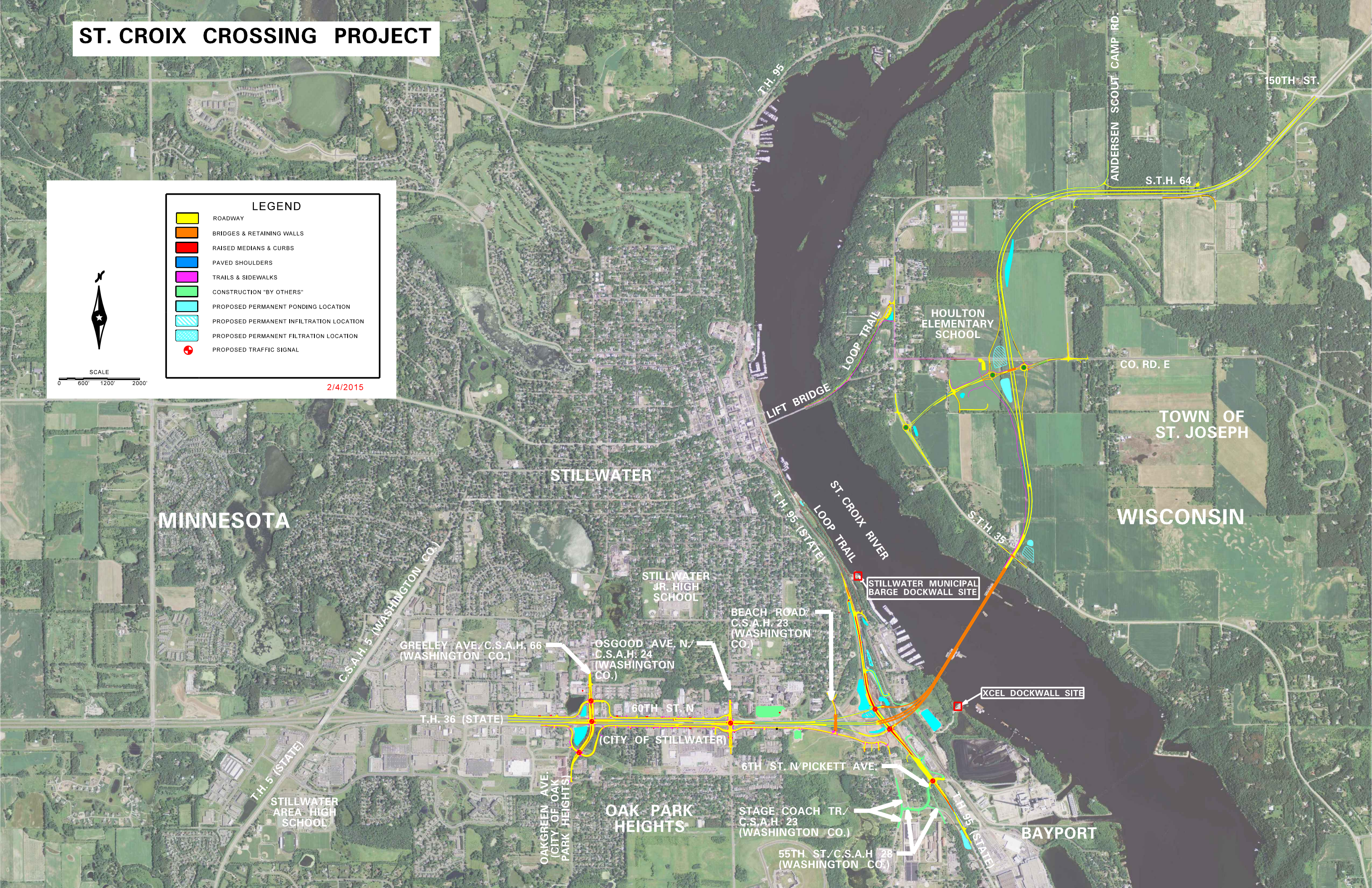
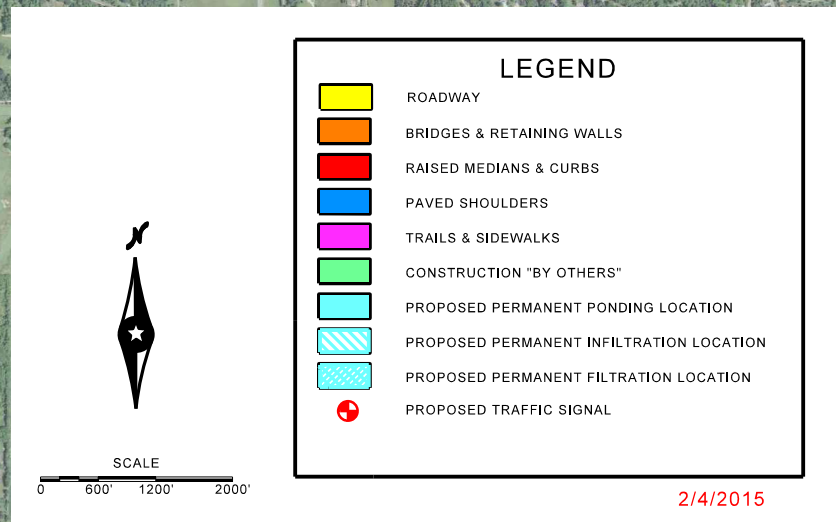
Remaining Significant Construction
Additional minor work remains along the Loop Trails in both states



ST CROIX CROSSING PROJECT
SFEIS TABLE 11-1: NRHP-LISTED AND DETERMINED ELIGIBLE PROPERTIES
STATUS OF CULTURAL RESOURCE MITIGATION AS OF 01/23/2019

Property Name	NRHP Criterion	SHPO Number	Effects from Preferred Alternative	Eligibility Status	MOA Stipulated Mitigation Item	Status	
Log Cabin Restaurant (Club Tara)	A	WA-OHC-019	Adverse Effect	Determined Eligible	Completion of NRHP nomination	Listed on NRHP as of 12/27/07	
Bergstein Shoddy Mill And Warehouse	A	WA-OHC-001	Adverse Effect	Determined Eligible	Completion of NRHP nomination	Listed on NRHP as of 3/5/08 Updated NRHP completed as of 9/2015	
Stillwater State Prison Historic District	C	WA-BPC-007	No Adverse Effect	NRHP Listed; 22 contributing properties, 8 non-contributing	No Adverse Effect	No Adverse Effect	
St. Croix Overlook-South	A & C	WA-OHC-005	Adverse Effect	Determined Eligible	Completion of NRHP nomination	Listed on NRHP as of 12/27/07	
William N. Danforth House	C	WA-SWC-1067	No Effect	Determined Eligible	No Effect	No Effect	
Fairview Cemetery	C	WA-SWC-1486	No Effect	Determined Eligible	No Effect	No Effect	
Stillwater South Main Street Archaeological District (Hersey and Bean Sawmill and Planing Mill Site, Slab Alley)	A & D	21WA91 21WA92 21WA100	Adverse Effect (Hersey and Bean Site) No Effect (Slab Alley)	Determined Eligible as contributing to Cultural Landscape District and to Archaeological district	Completion of NRHP nomination	NRHP nomination completed. Not listed on NRHP due to private owner objection	
Stillwater & St. Paul Railroad	A	WA-SWC-1503	No Effect	Determined Eligible	No Effect	No Effect	
St. Croix Boom Site	A	WA-SWT-004	No Effect	National Historic Landmark	No Effect	No Effect	
Stillwater Lift Bridge	C	WA-SWC-322	Adverse Effect	NRHP Listed; contributing to Stillwater Cultural Landscape District	a) Establish SLBAC b) Condition Assessment, O&M Manual c) Management Plan d) Endowment Fund e) Conversion Project	a) 100% Completed b) 100% Completed c) 100% Completed d) 100% Completed e) Construction from 2017 -2019	
Stillwater Commercial Historic District	A & C	Multiple Numbers	Adverse Effect	NRHP Listed; 82 properties; Lift Bridge not included	Enhanced construction signage, communication plan, optimize parking and parking lot in WI during construction.	Communication plan completed in 2013. Remaining Items to be completed during construction of St. Croix Crossing Project	
Stillwater Cultural Landscape District	A & C	Multiple Numbers	Adverse Effect	Determined Eligible; 247 contributing properties and 187 non-contributing properties; 3 contributing archaeological sites; Includes Lift Bridge	Illustrative Study	Illustrative Study of SCLD completed in 2011	
Nicholas Thelen Farmstead	C	AHI -46042	Conditional No Adverse Effect	Determined Eligible	Completion of NRHP nomination	Listed on NRHP as of 2/12/09	
St. Croix Hilltop Drive-In Theatre	C	AHI-129594	No Effect	Determined Eligible	No Effect	No Effect	
Louis Kriesel Farmstead	C	AHI-129596	Conditional No Adverse Effect	Determined Eligible	Completion of NRHP nomination	Listed on NRHP as of 2/12/09	

ST. CROIX CROSSING PROJECT



ST. CROIX RIVER CROSSING PROJECT
SUMMARY OF PREFERRED ALTERNATIVE MITIGATION ITEMS ---- IMPLEMENTATION STATUS

	Implementation Schedule (3)	Implementation Status (6)	Applicable/Estimated Cost (1)	Agency Responsible (2)	Contract/Agreement
Standard Practice Mitigation Items (see Section 15.4.1.1 of the SFEIS)					
Wetland replacement	During construction	100% complete -Corp of Eng, MnDNR, WisDNR and WCA permitting processes implemented. Wetland sites constructed and wetland banking processes used.	Applicable	Mn/DOT & WisDOT	Construction contracts
Zebra mussel decontamination protocol used during construction	During construction	100% complete - USFW Decontamination Protocol developed and applied during construction.	Applicable	Mn/DOT & WisDOT	Construction contracts
Mussel relocation/Dotted Blazing Star relocation (4)	Prior to construction	100% complete -Blazing star survey and transplanting completed in the fall of 2012. Mussel surveys under the new bridge and barge unloader were completed in 2012. Native mussel relocations completed in June of 2013 for staging area along WI shore. Mussel propagation activities at Genoa Fish Hatchery for federal species. Mitigation for federal, WI and MN mussel species addressed in agency agreements. Mussels surveys/mitigation agreements in 2011 & 2014 for Lift Bridge Conversion work.	\$338,000	Mn/DOT & WisDOT	Cooperative Agreements with MnDOT and MnDNR. Also MnDOT and USFW propagation agreement. WisDNR Incidental Take Authorization.
Erosion control/turf establishment	During construction	100% complete - Stormwater Pollution Prevention Plans from NPDES permits on Minnesota projects and Erosion Control Implementation Plans developed and implemented for Wisconsin projects.	Applicable	Mn/DOT & WisDOT	Construction contracts
Riverway Impacts - Preferred Alternative Mitigation Measures (see Section 15.4.1.2 of the SFEIS and Riverway MOU)					
Removal of Xcel barge unloading facility and mooring cells	During construction	100% complete in June 2017 -- Planned removal as part of the new river bridge superstructure contract S.P. 8221-01---from 2014 (barge unloader) to 2017(cells). Cells were removed from the water in April - June 19, 2017.	\$1,500,000	Mn/DOT	MOU between Mn/DOT and Xcel, Construction Contract
Mitigation for damages to bluffslands: - Land protection by WDNR and/or local governments through purchase, transfer or easements	Prior to construction	100% complete in June of 2013. Funding provided according to Riverway MOU.	\$4,500,000	WisDNR, St. Croix County	Cooperative agreements between Mn/DOT, WisDNR and St. Croix County
Bluffland restoration: 1)removal of Buckhorn sign, 2) partial restoration of Wisconsin approach (removal of pavement from east end of lift bridge to STH 35 and portions of CTH E)	During construction	100% complete - Buckhorn sign removed 10-17-16, via WisDOT Proj.ID 8110-02-75 in accordance with WisDOT & Johnson MOU from 2005. Removal of pavement included in adjacent loop trail grading plan of Proj.ID 8110-02-73, with pavement removals completed as of November of 2018.	\$60,000	WisDOT	WI 2016 & 2018 Construction contracts
Removal of Terra Terminal building including solid waste removal	Prior to construction	100 % complete in 2007 with building removal under S.P.8214-99A and regulated waste treatments	\$100,000	Mn/DOT	MnDOT Construction contract
Kolliner Park: removal of non-historic elements to allow reversion to “natural state”	During construction	100% complete ---design and reversion work is included in WI loop trail project ID 8110-02-73, with "natural state" reversion completed as of November of 2018.	\$6,000	WisDOT	WI 2018 Construction contract
Riverway interpretation (kiosks for interpretation of natural/cultural resources)	During construction	100% complete in June of 2013. Funding provided according to Riverway MOU.	\$300,000	NPS, MnDNR, WisDNR - consultation with SHPOs	Cooperative Agreement with Mn/DOT and NPS (lead agency)
Public boat access (locational study, environmental study and wetland mitigation by MnDNR)	During construction	100% complete in May of 2013. Funding provided according to Riverway MOU.	\$1,200,000	MnDNR	Cooperative Agreement with Mn/DOT and MnDNR
Completion of loop trail system including grading of the municipal barge facility property	During construction	95% complete overall: MN side: 1st letting was held June 2015. Portions of lower loop trail were constructed in 2015&2016 under S.P.8124-114AK. 2nd MN letting held in January 2018 under S.P.8214-172 for remaining upper loop trail and parking lot that was constructed in 2018. WI loop trail is 100% designed and 95% constructed. WI letting held on March 13, 2018 for final portion of loop trail as Proj. ID 8110-02-73. Lift Bridge Conversion Project letting was held in June 2017. Construction on Lift Bridge Conversion Project began on August 2, 2017 and is expected to be substantially completed by June of 2019. Trail segments are opened for use, as each segment is constructed in either state. Weather dependent, the fully operational 5 mile "loop trail" is expected to be open in June 2019.	\$6,600,000	Mn/DOT & WisDOT (construction of trails)	Construction contracts in Mn & WI. MN loop trail owner/maint. by City of Stillwater. WI loop trail maintenance agreement with St. Croix County where St. Croix County maintains the trail.
Recreation, education, and Riverway restoration	During construction	100% complete in June of 2013. Funding provided according to Riverway MOU.	\$250,000	NPS	Cooperative Agreement with Mn/DOT and NPS
Covenants on excess property owned by WisDOT (Buckhorn Ravine, closed rest area, west of STH 35) Estimated lost value = \$466,000 (5)	After construction	100% complete on applicable parcels in May 2017: "Conservancy District" west of STH35: 21.17 acres. "Agricultural Residential District" east of STH35: 27.24 acres	-	WisDOT	Covenants placed by WisDOT
Spill response plan	During construction	100% complete in June of 2013. Funding provided according to Riverway MOU.	\$100,000	NPS	Cooperative Agreement with Mn/DOT and NPS
Growth Management Mitigation Items (see Section 15.4.1.3 of the SFEIS and Growth Mgt MOU)					
Growth management fund: - Water resources planning/protection - Local government planning/zoning support - Greenspace protection program	Prior to construction	100% complete in May of 2013. Funding provided according to Growth Management MOU.	\$2,700,000	WisDNR, St. Croix County, UW-River Falls	Cooperative agreements between Mn/DOT, WisDNR, St. Croix County, and UW-River Falls.
Transit feasibility study	After record of decision (ROD); prior to construction.	100% complete in 2008	DOT staff support only	Mn/DOT	Interagency agreement between Mn/DOT and Metropolitan Council
Water quality memorandum of understanding (MOU) - water quality permitting	Prior to construction	100% complete - WQMAC established, numerous construction related permits requested since 2012, with conditions all being implemented in construction.	--	Mn/DOT	Mn/DOT MOU with MPCA and St. Croix Basin Team Members
Historic Resources Impacts - Preferred Alternative Mitigation Measures (refer to Amended Section 106 MOA in Appendix G of the SFEIS)					
Design and construction review: SHPO Review of all final designs affecting NRHP properties:	Prior to and during construction	on-going	Included in designs	SHPOs	Section 106 Amended MOA
Lift Bridge: - Mn/DOT continues ownership, maintenance and operations of Lift Bridge	Prior to construction	100% complete in 2008 -- MnDOT, FHWA and MnSHPO signed a historic bridge Programmatic Agreement identifying the Lift Bridge as one of MnDOT's Historic Bridges to preserve.	--	Mn/DOT	MnDOT's Historic Bridge Program administered by the MnDOT Cultural Resources Unit.
- Establish Stillwater Lift Bridge Advisory Committee	Prior to construction	100% complete in 2009	--	Mn/DOT	Section 106 Amended MOA
- Perform condition assessment. Develop operations and maintenance manual	Prior to construction	100% complete in 2009	Included in Lift Bridge Mgt Plan	Mn/DOT & WisDOT	Consultant Contracts
- Develop Lift Bridge Management Plan	Prior to construction	100% complete in 2009	\$1,400,000	Mn/DOT & WisDOT	Consultant Contracts
- Establish endowment account for operation and maintenance as a bicycle/pedestrian facility -- activities as defined in Lift Bridge Mgt Plan	During construction	100% complete - Endowment Acct. established in 2009 by MN legislation. MnDOT provided \$3M to endowment account in June 2014 and WisDOT provided \$1.5M in October 2014 to meet the Stipulation of the 2006 Amended Section 106 MOA. MnDOT provided an additional \$3M in February 2015. MN State Board of Investment invests funds as req'd by M.S.165.15.	\$7,500,000	Mn/DOT & WisDOT	"Mn/DOT and WisDOT will deposit no less than \$3 million in the endowment fund." per SFEIS and MOA.
- Capital improvements with conversion to pedestrian/bicycle facility.	After construction	100% complete - Env.Document completed 1-27-15. MnDOT letting held on June 9, 2017. Conversion project in 2017, 2018 & spring of 2019. Expect conversion to be substantially complete by June of 2019.	\$11,300,000	Mn/DOT	Lift Bridge Conversion Project - S.P. 8217-34 & 8217-4654D
Log Cabin Restaurant - parking lot design and construction	During construction	100% complete in 2013. Grading for parking lot completed in fall of 2012. Surfacing, remaining amenities and property transferred to Club Tara by July 2013.	\$630,000	Mn/DOT	Purchase Agreement between Mn/DOT, Club Tara, City of OPH and Xcel for construction, ownership and maintenance.
Bergstein Shoddy Mill and Warehouse -- additional documentation, relocation of Shoddy Mill and Warehouse	Prior to construction	100% complete - Buildings relocated in fall of 2012. Masonry and fencing work completed in summer of 2013. Building ownership and maintenance transferred to the City of Stillwater via Bill of Sale on 9-23-13.	\$1,255,000	Mn/DOT	MnDOT construction contract. And Bill of Sale with City of Stillwater to transfer ownership and maintenance of bldgs.
St. Croix Overlook-South: - Develop management plan for maintenance and rehabilitation	Prior to construction	100% complete in 2011	\$50,000	Mn/DOT	Consultant Contract
- Restore Overlook as directed in Roadside Restoration Report (2005)	During construction	100% complete - Substantial completion of restoration project in fall of 2013. Masonry and Landscaping warranties ended in fall of 2015.	\$650,000	Mn/DOT	Mn/DOT Construction contract
- Mn/DOT retains ownership of site	During construction	100% complete in 2011	--	Mn/DOT	Mn/DOT Construction contract
Stillwater Commercial Historic District: - Enhanced signage from new bridge and roadways to downtown Stillwater	During construction	100 % complete in 2013	Included in signage package	Mn/DOT	Mn Construction contracts
- Construction communication plan	During construction	100 % complete in 2013	Included in construction costs	Mn/DOT & WisDOT	Construction contracts
- Optimize parking on Chestnut and Main Streets	After construction	100% complete --Parking configurations designed into Lift Bridge Conversion Project - SP8217-34, with striping for additional parking stalls. 8 additional parking stalls on Chestnut Street were striped on 10-6-17.	Included in construction costs	Mn/DOT	Lift Bridge Conversion Project - S.P. 8217-34 & 8217-4654D
- Provide parking lot at old STH 35/64 and loop trail in Wisconsin	During construction	100% complete --- WisDOT had a March 13, 2018 letting. Now 100% designed and construction included in WI Loop Trail Project ID 8110-02-73, with parking lot constructed by November of 2018.	Included in WI loop trail costs	WisDOT	WI 2018 Construction contract
Stillwater Cultural Landscape District: - Complete and distribute illustrated study of Cultural Landscape District	Prior to construction	100% complete in 2011-12. Distributed in 2012. Also may be purchased at Minnesota's Bookstore.	\$50,000	Mn/DOT & WisDOT	Consultant Contract
South Main Archaeological District: - Develop a condition assessment and stabilization report for loop trail construction	Prior to construction	100% complete - Draft report completed in 2013. SHPO review of report completed and the final report was sent to City of Stillwater in May 2014. Wall recommendation work was part of loop trail design and construction.	\$300,000	Mn/DOT	Consultant Contract
- Protect and stabilize Hersey and Bean Archaeological Site prior to use for staging	During construction	100% MN Loop Trail Project design completed	Included in provisions and plans	Mn/DOT	MN 2015 and 2018 Construction Contracts for Loop Trails
- Avoid and minimize effects to historic resources in design of loop trail	During construction	100% MN Loop Trail Project design completed	Included in design	Mn/DOT	Section 106 Amended MOA
Kriesel Farmstead: - Construction of berm based on concepts presented in Visual Quality Manual	During construction	100% complete -- constructed in 2015	Included in construction costs	WisDOT	WI 2015 construction contract
National Register of Historic Places (NRHP) Nominations: - Log Cabin, Bergstein Shoddy Mill and Warehouse, St. Croix Overlook-South, South Main Archaeological District, Thelen Farmstead, Kriesel Farmstead	Prior to construction	100% complete in 2007 with nominations	\$20,000	Mn/DOT & WisDOT	Consultant Contracts
Lift Bridge publication (illustrated book on Lift Bridge)	During construction	95% complete on book. An Amended MOA amendment was executed on 5-23-16 to contract with Hess, Roise and Company. Draft book rec'd from Hess Roise in October 2017. Reviews by SHPO's in both states and MnDOT's Communications Office occurred throughout 2018. Final formatting of text and photos on-going. Expect to complete the Lift Bridge book and distribute it during March/April of 2019.	\$67,000	Mn/DOT	Consultant Contract to write book. Hardcopies distributed to MOA signatories and concurring parties, with E-copies on websites, in accordance with Amended MOA amendment. Additional hardcopies available for purchase at Minnesota's Bookstore.
Develop field guide to Stillwater Cultural Landscape District (includes St. Croix Overlook- South)	During construction	100% complete in 2016. Distributed Field Guides in April 2016. Provided files to City of Stillwater in July of 2016.	\$15,000	Mn/DOT	Consultant Contract
Visual Enhancements (see Section 7.4.4 of the SFEIS)					
Visual enhancements: implementation of the Visual Quality Manual - increased allowable aesthetic costs (4)	During construction	Ongoing landscaping projects thru the spring of 2020 and then a 2 year maintenance period after that: Bridge aesthetics were constructed with the superstructure contract. 4 separate landscaping projects in MN with total Trees:2,178 Shrubs:8,587 Vines:288 Perennials:5,364 Native Seed Mixes:50#, Native Sod: 227 sq.ft.. 3 landscaping projects in WI with total Trees: 641, Shrubs: 668 and Native Seed Mixes: 560#.	Landscaping: \$1,550,000 total in Minnesota and \$264,000 total in Wisconsin	Mn/DOT & WisDOT	MN: 2015, 2016, 2018 and 2019 construction contracts. WI: 2014, 2015 and 2018 Construction Contracts.

(1) Funding for mitigation to be provided by the project, through the transportation agencies (FHWA, Mn/DOT, WisDOT).
(2) Agency responsible for implementation of the mitigation item.
(3) Implementation schedule details provided in Section 15.4.1 of the SFEIS, Memorandum of Agreement and Memorandum(s) of Understanding.
(4) Costs associated with this item are included in construction costs and not in the mitigation total for the Preferred Alternative in the SFEIS.
(5) Estimate of excess right of way available for resale is 46 acres. At \$10,000/acre difference in sale value between developed and undeveloped land, amount of lost revenue for Preferred Alternative = \$466,000.
(6) See Annual Project Summary Reports for details on implementation