

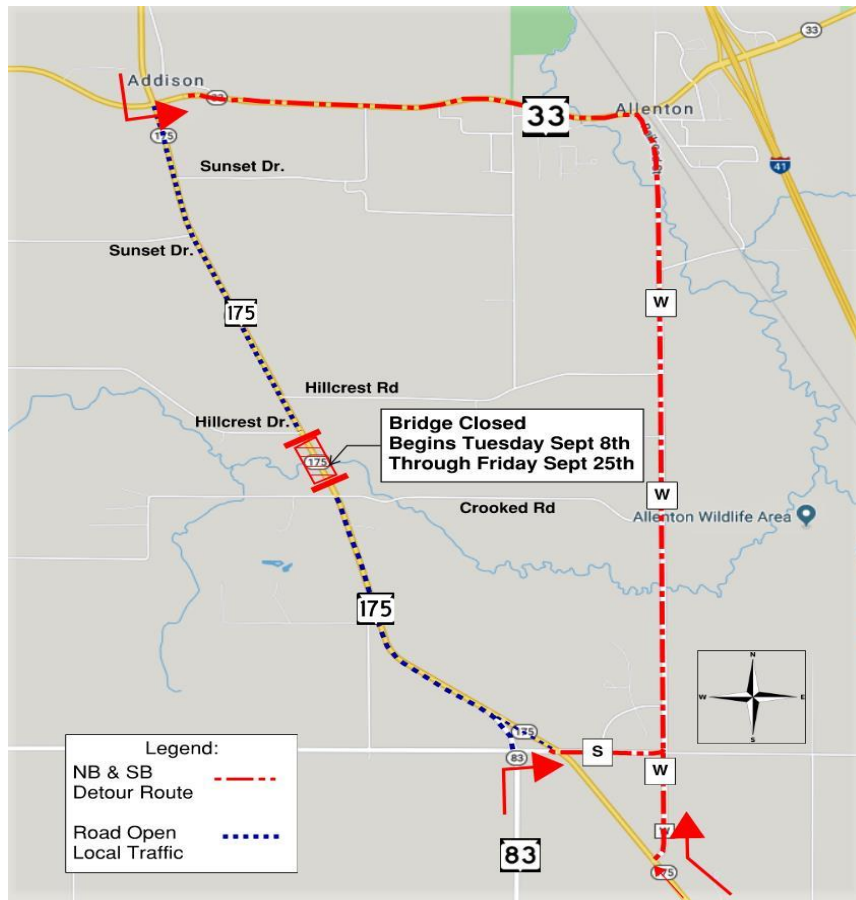


# Bridge Rehabilitation

WIS 175 over Limestone Creek

Washington County  
Sept. 1, 2020

<https://projects.511wi.gov/region-wide/waukesha-county/>



The Wisconsin Department of Transportation will be closing WIS 175 over Limestone Creek on Tuesday September 8th for approximately three weeks to complete bridge deck repairs and roadside safety improvements. The Bridge deck will be repaired and overlaid. Approach Guardrails will be replaced.

## Construction Schedule:

- September 8<sup>th</sup> - Close WIS 175 over the Limestone Creek
- September 25<sup>th</sup> - Open WIS 175

## Traffic Impacts/Detours:

- WIS 175 will be closed to all traffic at Limestone Creek.
- Through traffic will be detoured along WIS 33 and County W (Map Above)
- Local Access will be available up to the road closure located at the bridge

## Project Contacts:

Matt Buska, Project Construction Leader, (715) 252-6787, [Matt.Buska@foth.com](mailto:Matt.Buska@foth.com)

Kurt Flierl, Project Manager, (414)-750-3085, [kurt.flierl@dot.wi.gov](mailto:kurt.flierl@dot.wi.gov)