



MARK	COLOR	LOCATION	NOTES
A	BASE COLOR	SLOPED FACE PARAPETS	TOP & EXTERIOR
		VERT. FACE PARAPETS	TOP & BOTH SIDES, EXCEPT AS NOTED FOR ACCENT COLORS
		SIDEWALKS	FASCIA & EXPOSED UNDERSIDE
		DECK	FASCIA & EXPOSED UNDERSIDE TO EXTERIOR GIRDER FLANGE
		ABUTMENTS	EXTERIOR WING WALLS TO 1'-0" BELOW FINAL GRADE, FRONT FACE FROM UNDERSIDE OF DECK TO 1'-0" BELOW FINAL GRADE INCLUDING BETWEEN ALL GIRDERS
		WALLS	EXPOSED FACES TO 1'-0" BELOW FINAL GRADE
		PIERS	SIDES AND BOTTOM OF CAP BEAM, COLUMNS TO 1'-0" BELOW FINAL GRADE EXCEPT AS NOTED FOR ACCENT COLORS
B	ACCENT COLOR #1	PARAPETS	RECESSED PANELS ON BOTH SIDES & RECESSED PANELS AT ROADWAY NAME
		GIRDERS	EXTERIOR FACE AND UNDERSIDE OF EXTERIOR GIRDERS
		PIERS	REVEALS ON COLUMNS
C	ACCENT COLOR #2	DECORATIVE PANEL	RECESSED AREAS
D	ACCENT COLOR #3	PARAPETS	LETTERING AT ROADWAY NAME
		WALLS	HORIZONTAL REVEALS & M.S.E. WALL PANEL JOINTS

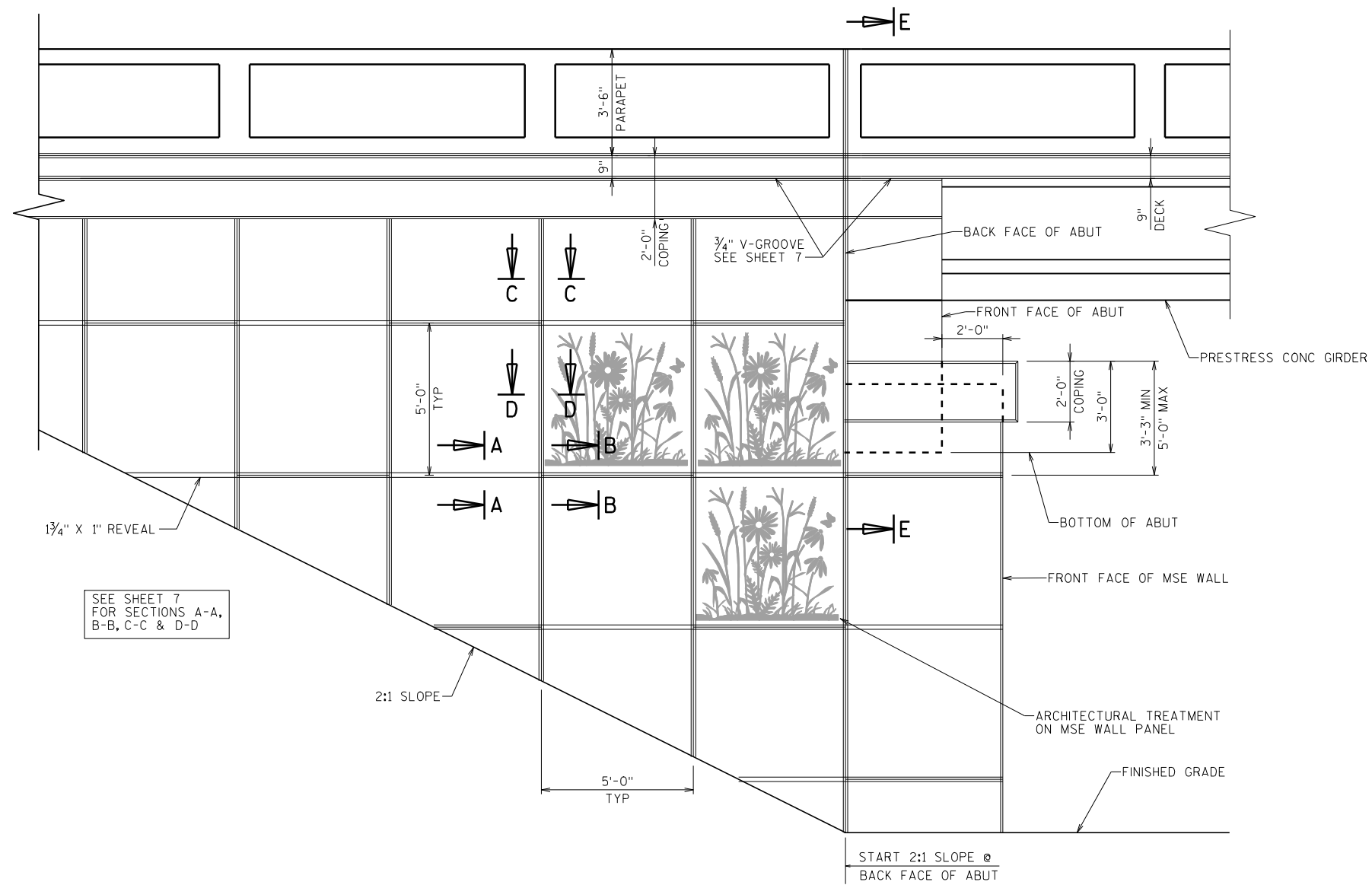
Technical drawing of a fence panel with dimensions and callouts:

- Overall height: 8"
- Overall width: 9'-0"
- Inner panel width: 5'-7"
- Panel height: 2'-4"
- Panel width: 1'-3"
- Callouts:
  - A: 1/2" RECESS
  - B: 0" RECESS
  - C: 1/2" RECESSED LETTERING
  - D: 1/2" RECESSED LETTERING

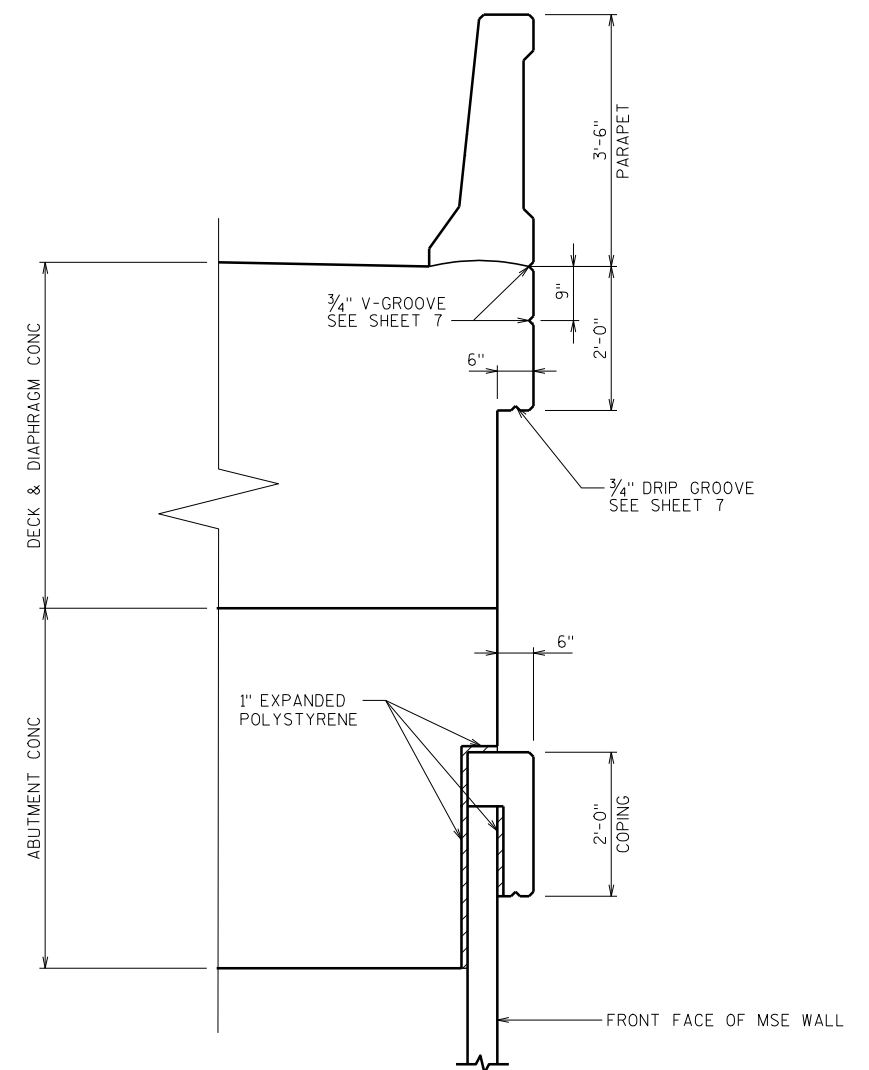
NOTES:

- LETTERING SHALL BE 6" HELVETICA
- USE DECORATIVE FENCE PANEL
- TYPE "G" ABOVE INDENTED TEXT.
- LETTERING IS ONLY ON OUTSIDE FACE OF PARAPET.

EXTERIOR FACE OF PARAPET ONLY



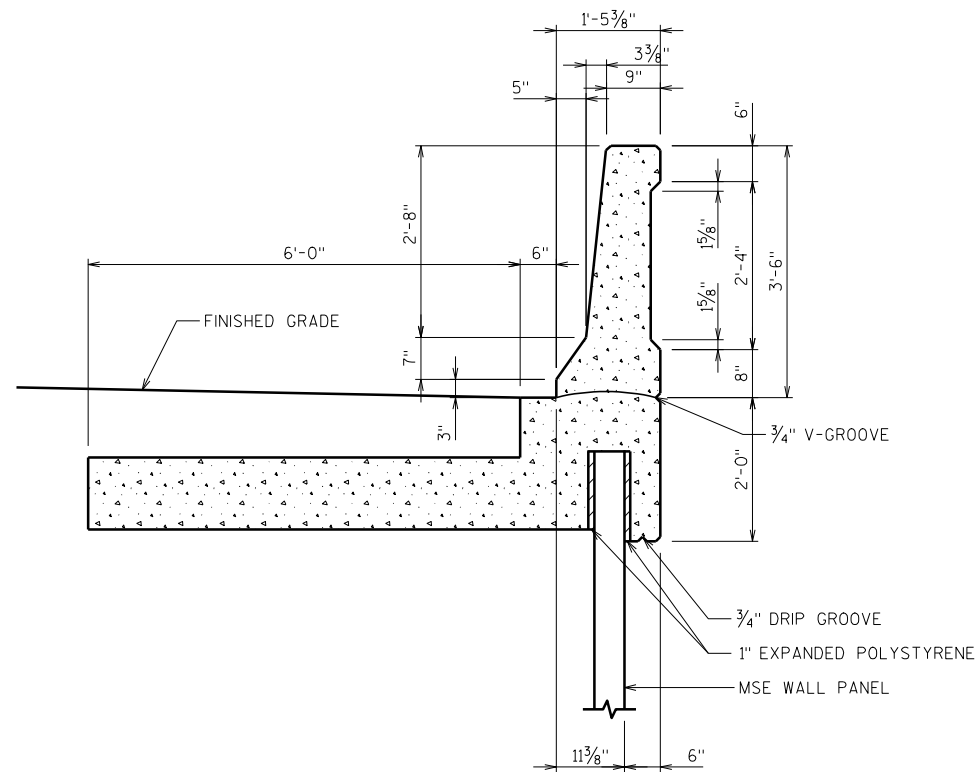
**MSE WINGWALL ELEVATION**  
SEE SHEET 1 FOR CONCRETE STAINING REQUIREMENTS



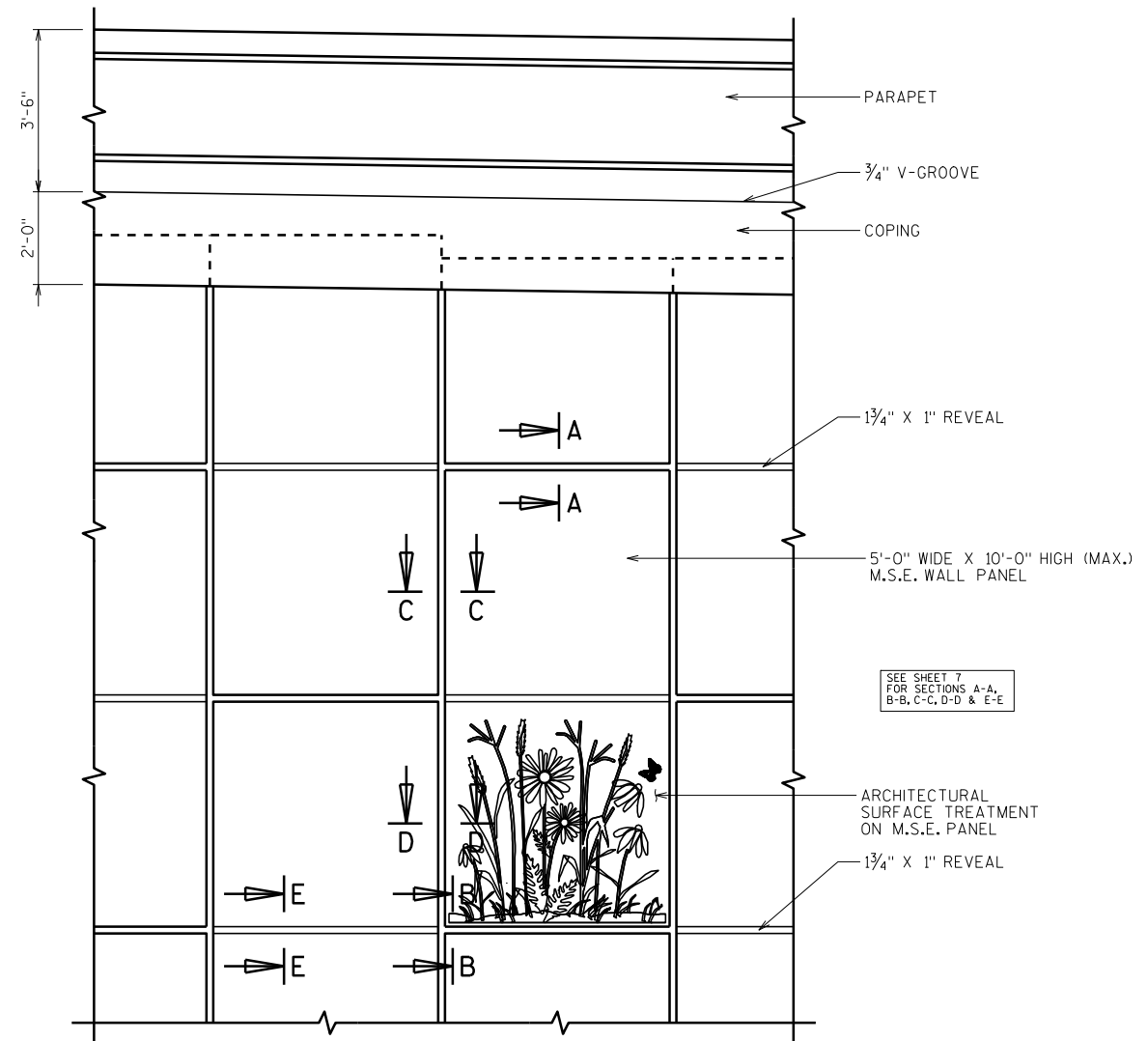
**SECTION E-E**

**DESIGNER NOTES**  
VERTICAL MSE ABUTMENTS AT HIGHWAYS 20 (RACINE, CO) AND 50 (KENOSHA, CO)  
SUBMIT MSE WALL ELEVATION FOR "PRAIRIE PATTERN" PLACEMENT AND STAINING TO SOUTHEAST FREEWAY TEAM FOR REVIEW AND APPROVAL.  
PRAIRIE PATTERN AVAILABLE IN ELECTRONIC FILE FROM WISDOT.  
OPTIONAL MSE PANEL SIZE 5' X 10' MAX

			<b>I-94 CSD STRUCTURE DETAILS</b>
			<b>M.S.E. WING WALLS</b>
			SILL ABUTMENT IN BACK OF M.S.E. RETAINING WALL
<b>DATE</b>	<b>REVISION</b>	<b>BY</b>	SHEET 4 OF 14
PLOTTED:	14-DEC-2007 11:40		



**SECTION - M.S.E. RETAINING WALL**  
SEE SHEET 1 FOR CONCRETE STAINING REQUIREMENTS



**ELEVATION - M.S.E. RETAINING WALL**

**DESIGNER NOTES**  
USE THESE DETAILS FOR "STAND-ALONE" RETAINING WALLS.  
FOR BRIDGE WING WALLS, SEE OTHER CSD DETAIL SHEETS.  
SUBMIT M.S.E. WALL ELEVATIONS FOR "PRAIRIE PATTERN" PLACEMENT AND STAINING TO SOUTHEAST FREEWAY TEAM FOR REVIEW AND APPROVAL.

			<b>I-94 CSD STRUCTURE DETAILS</b>
			<b>RETAINING WALLS</b>
			MECHANICALLY STABILIZED EARTH (M.S.E.)
			RETAINING WALLS
			SHEET 6 OF 14
DATE	REVISION	BY	
PLOTTED:	14-DEC-2007 11:40		