

# Project BRIEF

*I-94 North-South Freeway Project information*

## WIS 20 Interchange Reconstruction Project Update

As part of Wisconsin Department of Transportation's (WisDOT) WIS 20 Interchange reconstruction project, the following upcoming project work and closures are scheduled for the next phase of this project:

Crews are preparing to **OPEN** the I-94 EAST (SB) entrance ramp from WIS 20 Monday, October 12 at 5 a.m.

Additionally, crews will be performing pavement marking operations on I-94 WEST (NB) mainline and will require scheduled closures.

**All closures are weather dependent and subject to change.**

**Upcoming closures the week of October 12:**

- **I-94 WEST (NB) entrance ramp from WIS 20** is scheduled to close to traffic Tuesday, October 13 from 8 p.m. to 5:30 a.m.

**Detour:**

→ Traffic will be directed to use East Frontage Road north to County K to access I-94 WEST (NB).

- **I-94 WEST (NB) exit ramp to WIS 20** is scheduled to close to traffic Wednesday, October 14 from 8 p.m. to 5:30 a.m.

**Detour:**

→ Traffic will be directed to exit at WIS 11 and use the frontage roads to access WIS 20.

- **I-94 WEST (NB) entrance ramp from WIS 11** is scheduled to close to traffic Wednesday, October 14 from 8 p.m. to 5:30 a.m.

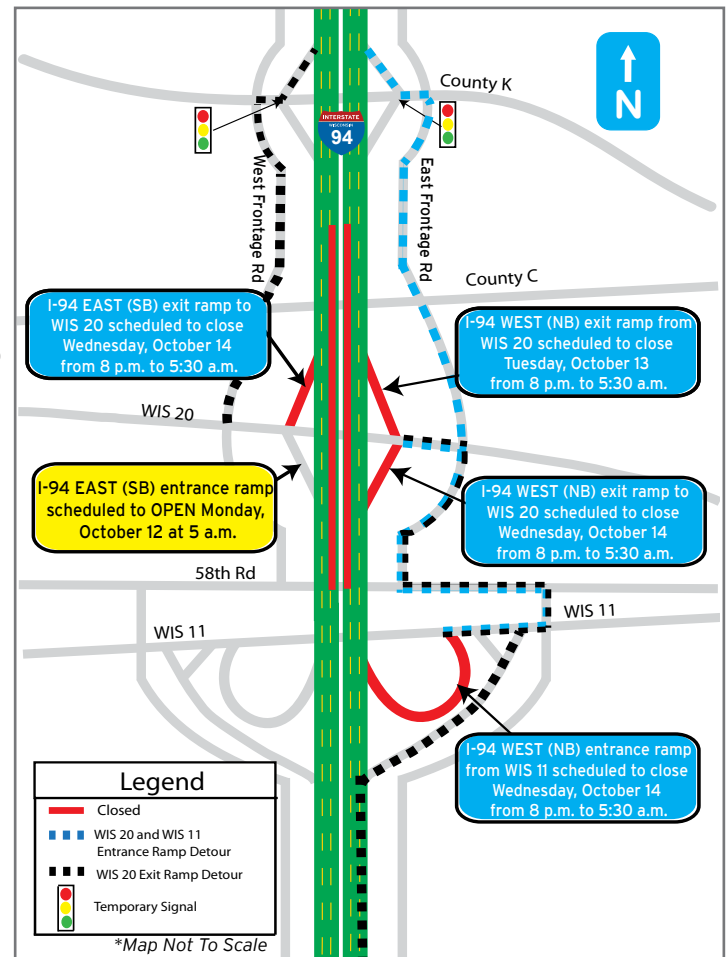
**Detour:**

→ Traffic will be directed to use East Frontage Road north to WIS 20 to access I-94 WEST (NB).

- **I-94 EAST (SB) exit ramp to WIS 20** is scheduled to close to traffic Wednesday, October 14 from 8 p.m. to 5:30 a.m.

**Detour:**

→ Traffic will be directed to exit at County K and use the frontage roads to access WIS 20.



The project team thanks you for your patience and cooperation throughout this project.

**Questions?**

- Visit the project website at [www.plan94.org](http://www.plan94.org) to view the latest project information, sign up for periodic email updates or leave a comment for the project team.