

# I-90/US 53/WIS 35

## Public Involvement Meeting (PIM) Meeting #5

March 29, 2016

**AYRES**  
ASSOCIATES

# Welcome and Introductions

- ▶ Anthony VanderWielen – WisDOT Project Manager
- ▶ Bruce Ommen– Ayres Associates
- ▶ Eric Sorensen – Ayres Associates
- ▶ Joel Jurss – CH2M



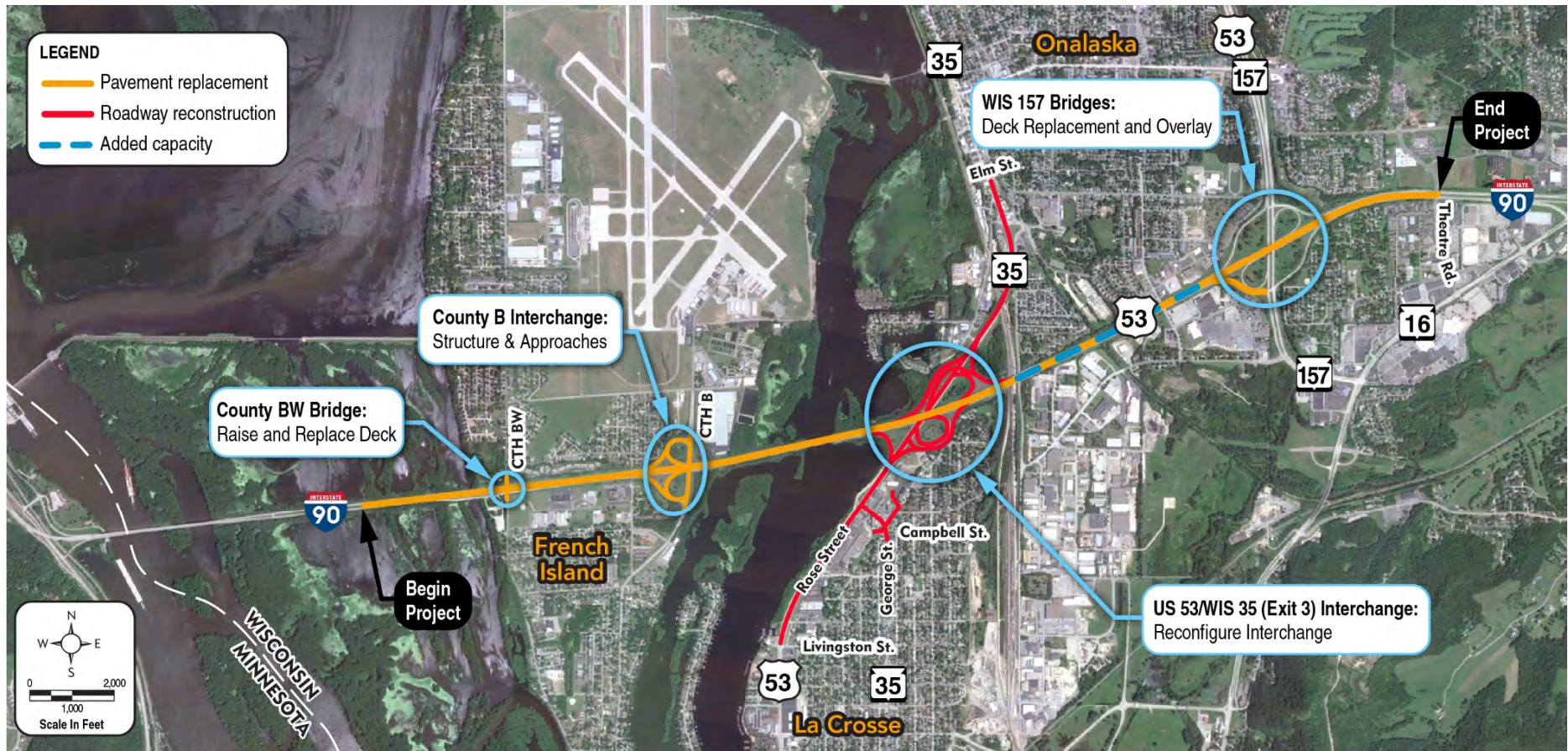
I-90 Reconstruction Project

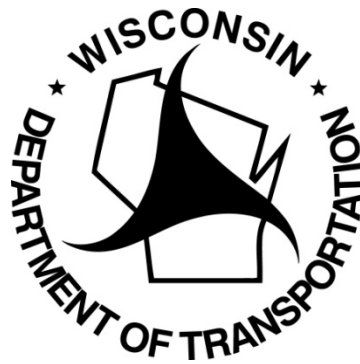
# Agenda

- ▶ Schedule Update
- ▶ Construction Update
- ▶ Real Estate Update
- ▶ Aesthetic Enhancements
- ▶ Public Outreach
- ▶ Discussion



# Project Area





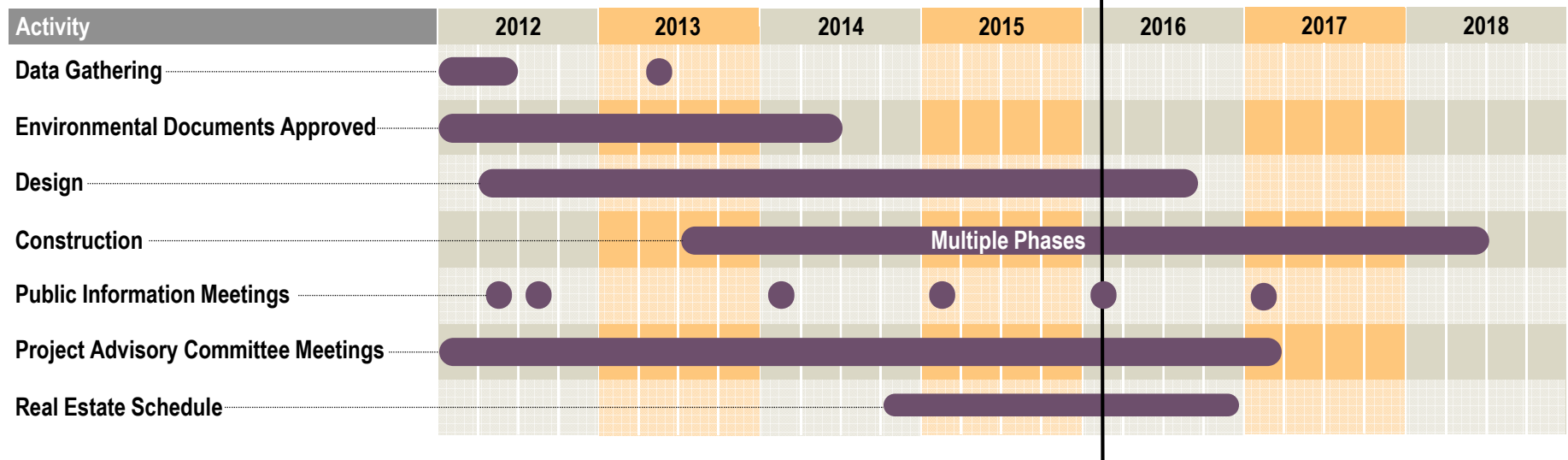
# Schedule Update

I-90/US 53/WIS 35



# Project Schedule

March 2016



I-90 Reconstruction Project

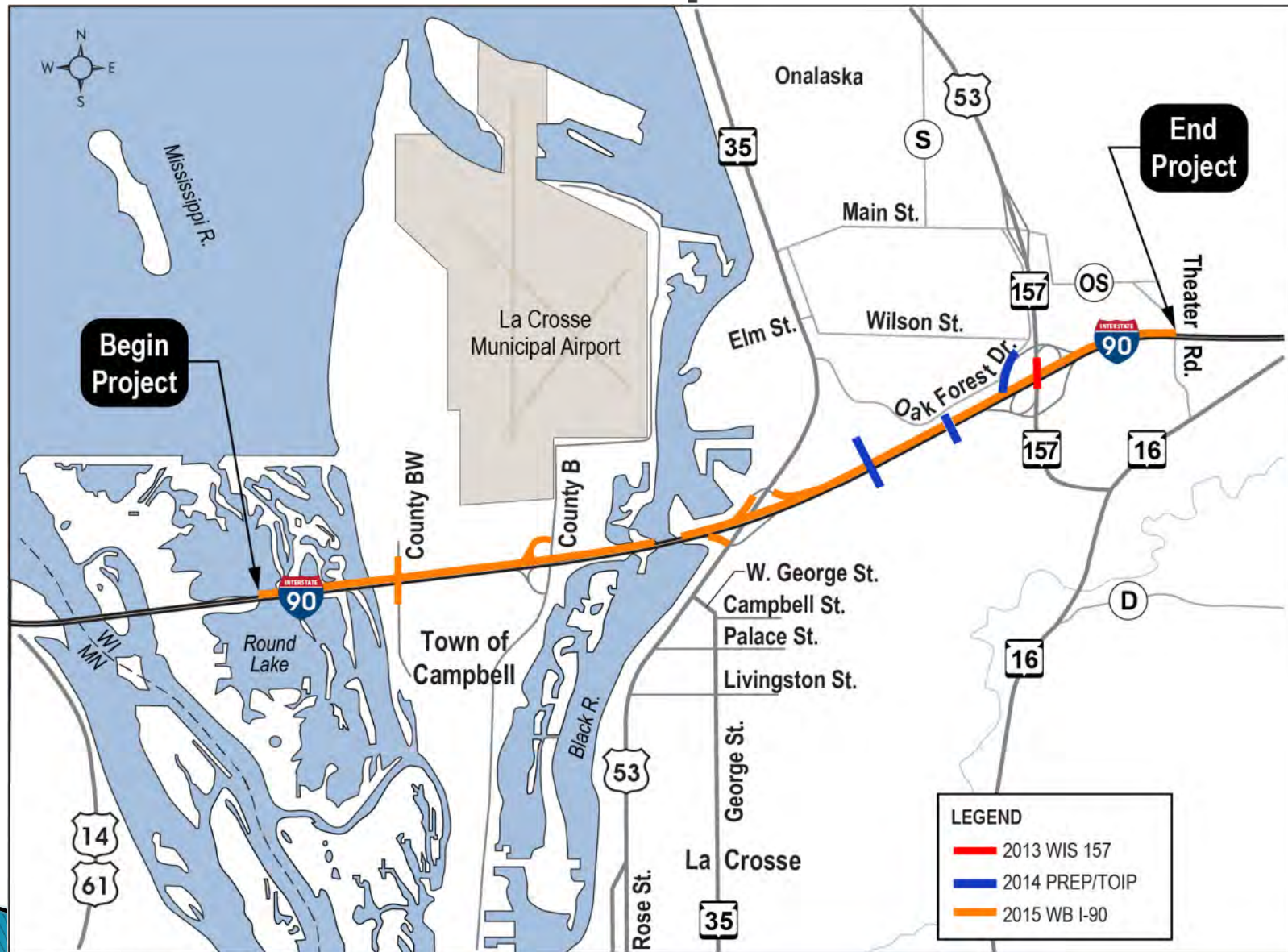


# Construction Update

I-90/US 53/WIS 35

**AYRES**  
ASSOCIATES

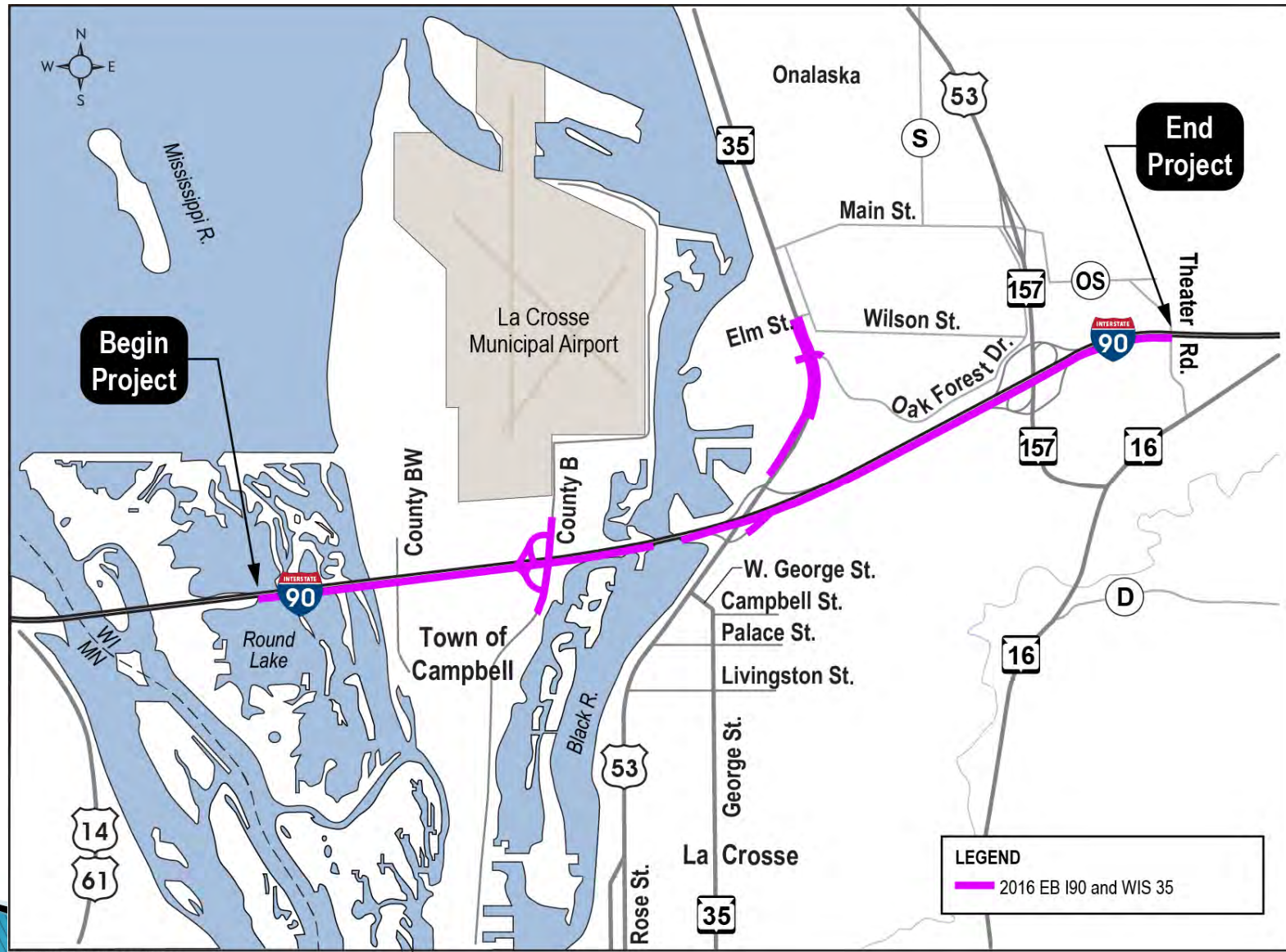
# Construction Completed to Date



I-90 Reconstruction Project

**AVRES**  
ASSOCIATES

# EB I-90/WIS 35 - 2016 Construction



I-90 Reconstruction Project

**AVRES**  
ASSOCIATES

# EB I-90/WIS 35 – 2016 Construction

- ▶ Replace EB I-90 pavement and rehab structures from State Line to Black River
  - CTH B bridge and roadway
- ▶ Reconstruct EB I-90 from Black River to Theater Rd
  - Replace EB bridge over Rose St
- ▶ Reconstruct WIS 35 north of railroad
  - Replace SB bridge over railroad
- ▶ Ramp gate installation at CTH B, WIS 157, and WIS 16
- ▶ Coordinate with separate project reconstructing the rest area



# EB I-90/WIS 35 – 2016 Construction

- ▶ Anticipated impacts to traffic (coordinated with Dresbach Project)
  - Lane reduction to one lane WB/EB I-90 from State Line to Rose St and under STH 157 bridge
  - Lane reduction to one lane NB/SB WIS 35 from the railroad to north project limits
  - Rest Area closed
  - CTH B remains open during construction
  - Sidewalk and bike route closed and detoured Oak Forest Dr to Elm St



# EB I-90/WIS 35 – 2016 Construction



# EB I-90/WIS 35 – 2016 Construction

- ▶ Anticipated impacts to traffic (continued)
  - Off-peak short term closures of I-90, Rose Street, and Ramps

## I-90 Reconstruction Project

### 2016 Construction and Traffic Impacts

2016 construction will include the eastbound lanes of I-90 from the State Line to Theater Road and WIS 35 from the railroad to Elm Street. Major structure work includes the eastbound I-90 bridges over US 53/Rose Street and the French Slough, the County B bridge over I-90, southbound WIS 35 bridge over the railroad, and overhead sign structures. The Rest Area will be closed and reconstructed under a separate project. See the below map and on the back for the location of construction operations and anticipated impacts on traffic.



LaCrosse, WI

I-90 Reconstruction Project—April 2016

## I-90 Reconstruction Project

Anticipated impacts to traffic during 2016 construction include:

- All roadways remain open except as noted below
- I-90 reduced to one-lane in each direction from State Line to US 53/Rose Street and a portion of I-90 under WIS 157
- WIS 35 reduced to one-lane in each direction from the railroad to Elm Street
- Sidewalk and bike route from Oak Forest Drive to Elm Street closed and detoured
- WIS 157 northbound to I-90 westbound and WIS 157 southbound to I-90 eastbound loop ramps will be closed and detoured for the majority of the construction season (see Figures A and B)
- Potential ramp closures Monday through Friday 12:00 a.m. – 4:00 a.m.
- I-90 eastbound to WIS 35 northbound loop ramp will be closed and detoured most of the summer (see Figure C)
- County B reduced to one-lane in each direction
- Rest Area will be closed through Fall of 2016
- Potential lane closures on Rose Street during periods of low traffic volumes for work on the I-90 bridge
- Brief stops (up to 15 minutes) on I-90 and US 53/Rose Street for bridge and/or sign structure placement or removal to occur Monday through Friday 12:00 a.m. – 4:00 a.m.



Figure A: Northbound WIS 157 to Westbound I-90



Figure B: Southbound WIS 157 to Eastbound I-90



Figure C: I-90 eastbound to WIS 35 northbound



LaCrosse, WI

I-90 Reconstruction Project—April 2016



I-90 Reconstruction Project

# EB I-90/WIS 35 – 2016 Construction

STH 157 NB to I-90 WB loop ramp will be closed and detoured



I-90 Reconstruction Project

**AVRES**  
ASSOCIATES

# EB I-90/WIS 35 – 2016 Construction

STH 157 SB to I-90 EB loop ramp will be closed and detoured



I-90 Reconstruction Project

**AVRES**  
ASSOCIATES

# EB I-90/WIS 35 – 2016 Construction

EB I-90 loop ramp to NB Rose St closed most of the summer, detoured through the WIS 157 interchange



# US 53/WIS 35/Rose Street – 2017/2018



I-90 Reconstruction Project

AVRES  
ASSOCIATES

# US 53/WIS 35/Rose Street – 2017/2018



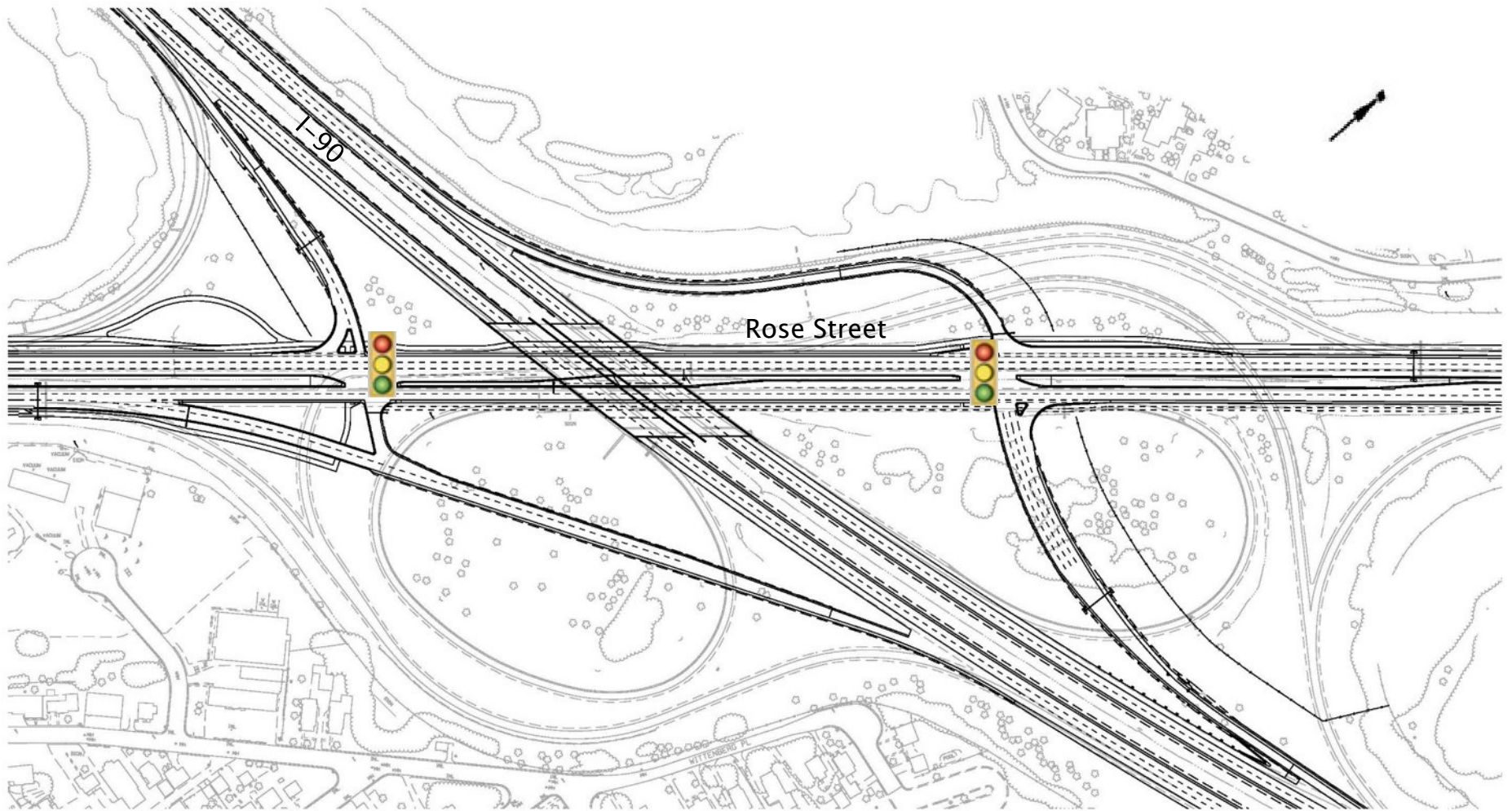
I-90 Reconstruction Project

# US 53 / WIS 35 / Rose Street – 2017/2018

- ▶ Rose St reconstruction from Livingston St to railroad bridge
- ▶ I-90 Ramps
- ▶ NB WIS 35 bridge over railroad
- ▶ W. George St
- ▶ George St
- ▶ Back access road
- ▶ Eagle Watch Area



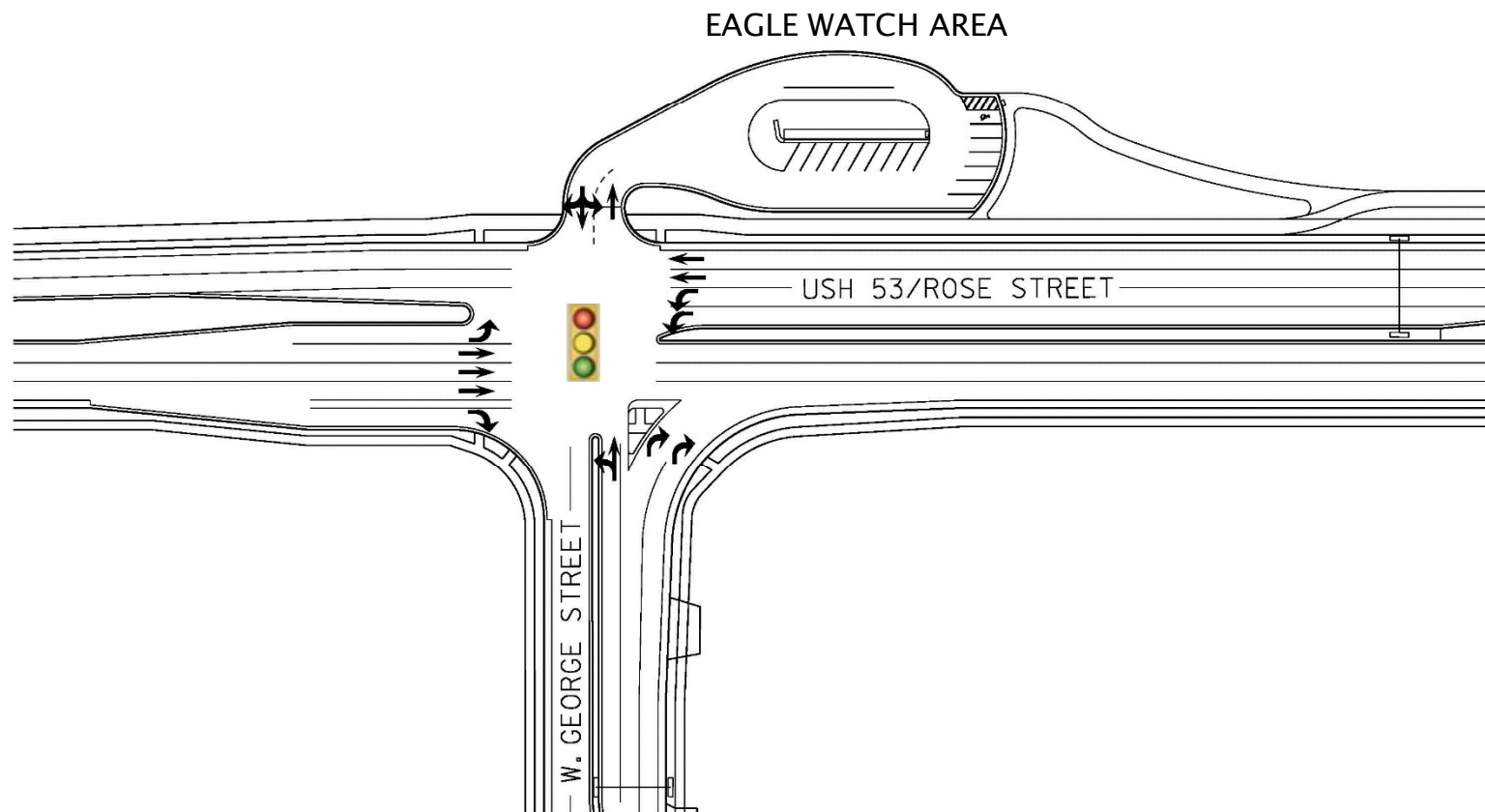
# US 53 / WIS 35 / Rose Street – 2017/2018



# US 53/WIS 35/Rose Street – 2017/2018

Black River

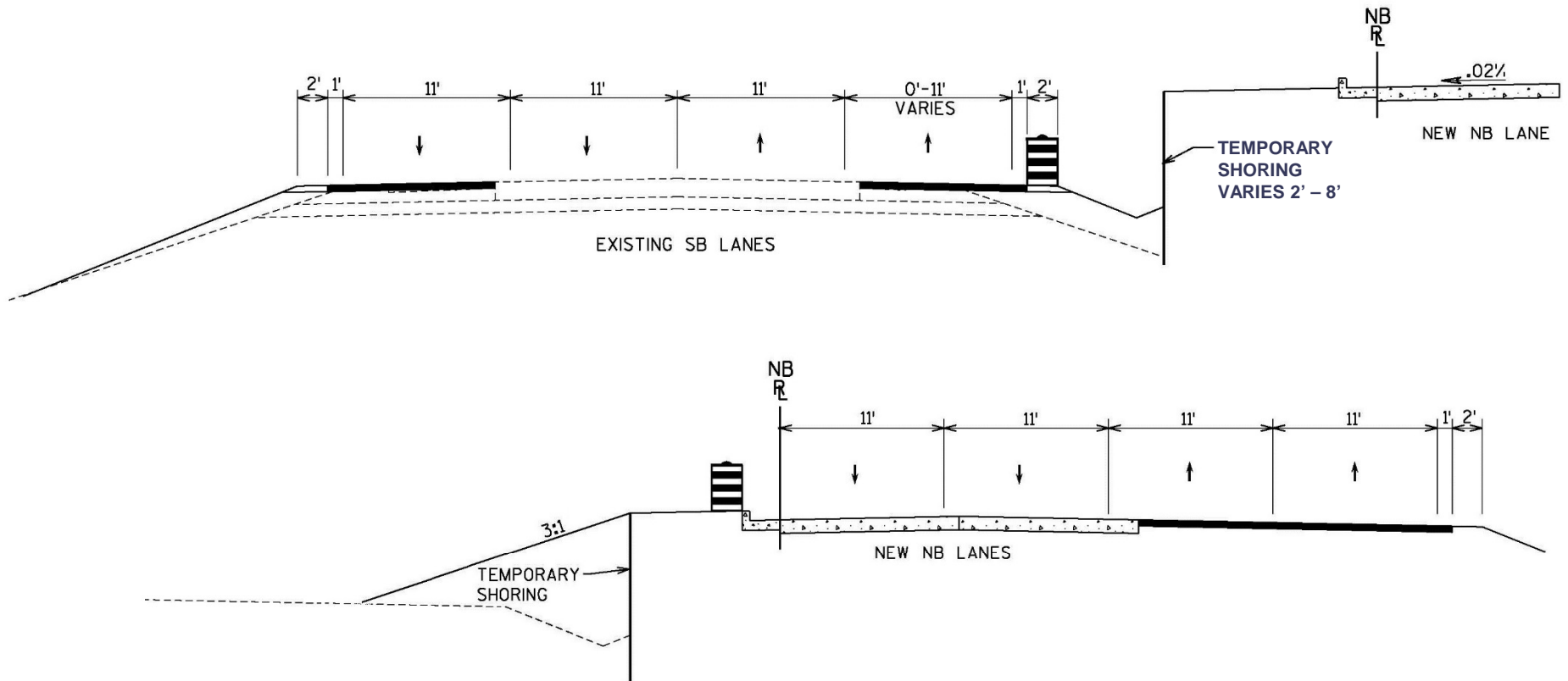
  
DRAFT - FEB 2016



I-90 Reconstruction Project

**AVRES**  
ASSOCIATES

# W. George St/George St – 2017/2018





# Real Estate Update

I-90/US 53/WIS 35

**AYRES**  
ASSOCIATES

# Real Estate Update

## ► Real Estate overview

- Initial appraisals are complete
- All property owners directly impacted by the project have been contacted
- Anticipate acquisitions complete by the end of 2016





# Aesthetic Enhancements



I-90 Reconstruction Project

# Aesthetic Enhancements

## ► Bridge Elements

- I-90 bridges over Rose St will include staining and stone pattern
- STH 35 Railroad bridges will include limited staining, stone pattern, and ornamental screening
- County BW and County B bridges include staining, stone pattern, and ornamental screening



# Aesthetic Enhancements



I-90 Reconstruction Project

# Aesthetic Enhancements



I-90 Reconstruction Project

# Aesthetic Enhancements

- ▶ Rose Street
  - Cities of La Crosse and Onalaska decorative lighting outside the interchange area
  - Landscaping – amount and extent to be determined
- ▶ Colored pavement at crosswalks
- ▶ WisDOT signal and light poles painted black



# Eagle Watch Area

I-90/US 53/WIS 35

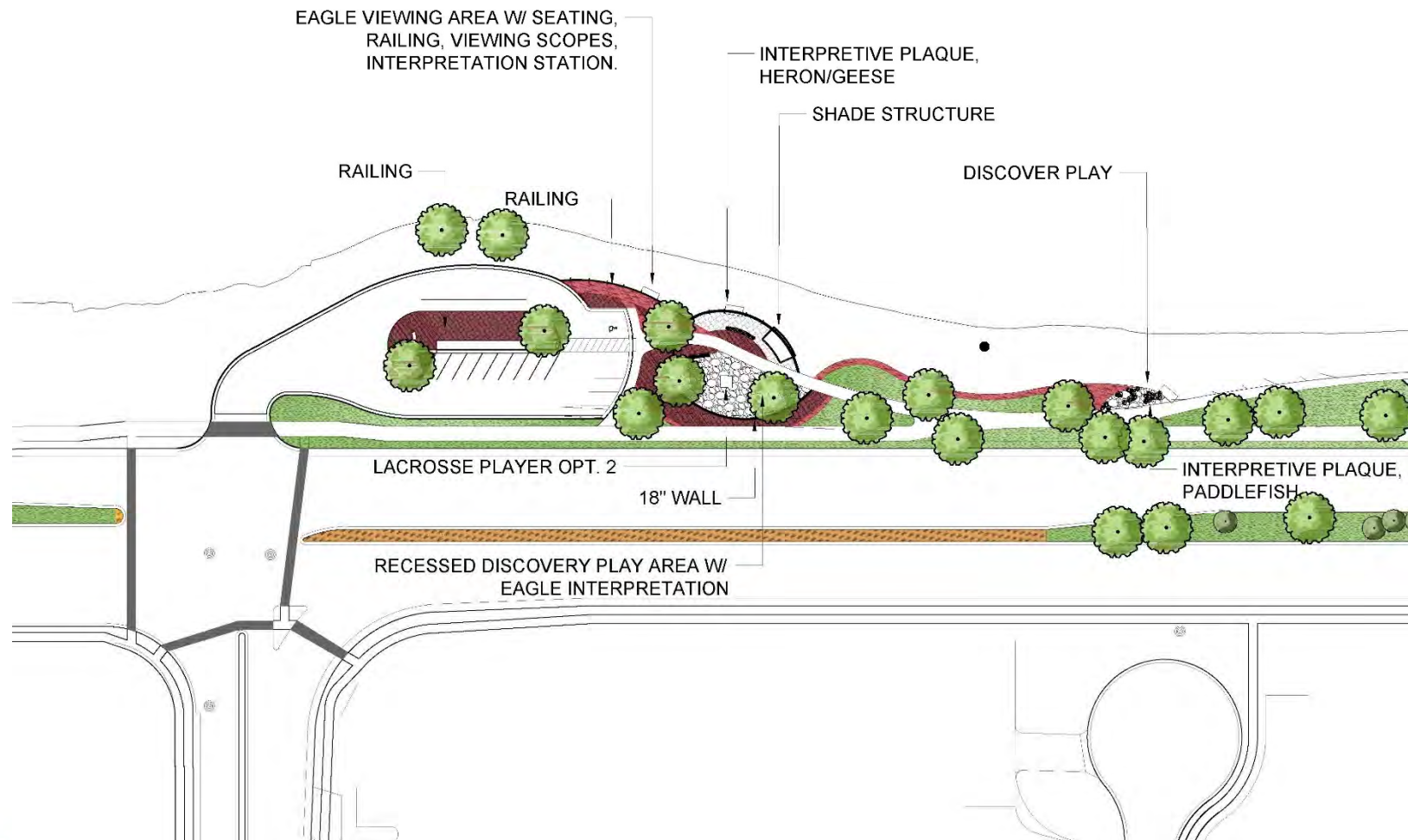


# Eagle Watch Area

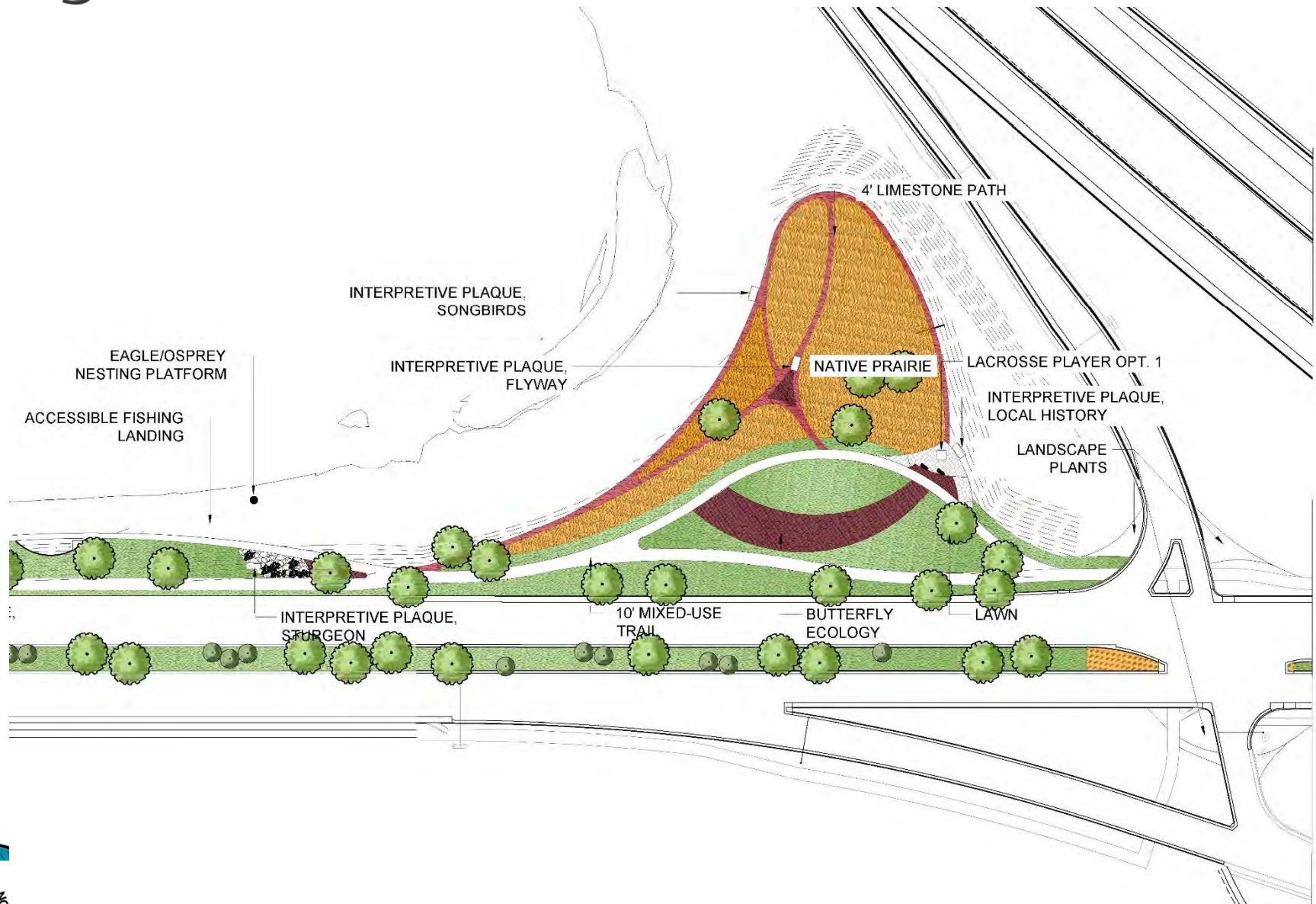
- ▶ Proposed by the City of La Crosse
- ▶ To be included in the Rose Street construction project 2017–2018



# Eagle Watch Area Features – South



# Eagle Watch Area Features – North



# Public Outreach

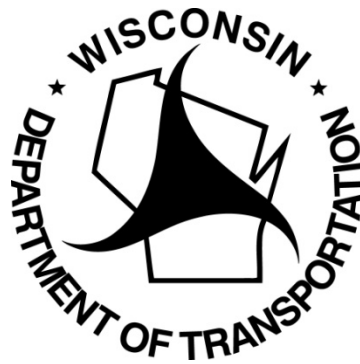
I-90/US 53/WIS 35



# Public Outreach

- ▶ Project website will be updated with details and exhibits from the Public Information Meeting
- ▶ PIM is planned for Spring 2017
- ▶ In-This-Together Meeting with Local Businesses
  - Spring 2016 for Rose St/W. George St project
  - Includes construction staging discussion with business owners





# Discussion



I-90 Reconstruction Project