



# I-90/US 53/WIS 35

## Public Information Meeting Meeting #3

February 26, 2014

# Welcome and Introductions

- ▶ Anthony VanderWielen, WisDOT Project Manager
- ▶ Bruce Ommen, Ayres Associates



# Agenda

- ▶ Project Overview
- ▶ Project Update
  - West George Street
  - Eagle Viewing Area
  - Bicycle and Pedestrian Accommodations
  - Community Sensitive Solutions (CSS) Funding
  - Environmental Report
  - Project Schedule
- ▶ Construction Schedule
- ▶ Moving Forward
- ▶ Discussion





# Project Overview



# Project Updates

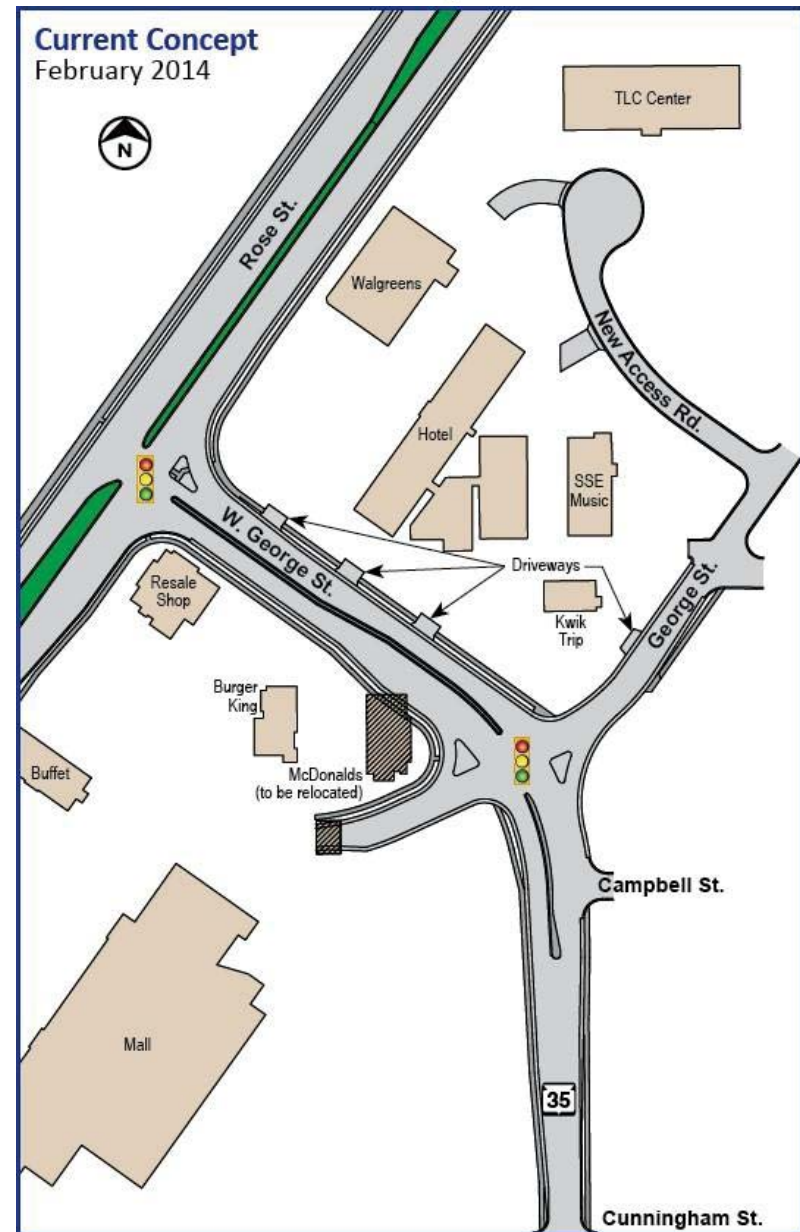


I 90 Reconstruction Project



# West George St. Current Concept

- ▶ Raised median on W. George St.
- ▶ Consolidated access south side of W. George St.
- ▶ Signals at W. George St./George St. intersection
- ▶ Access road north of W. George St.
- ▶ Turn lane improvements
- ▶ Sidewalks and bicycle accommodations



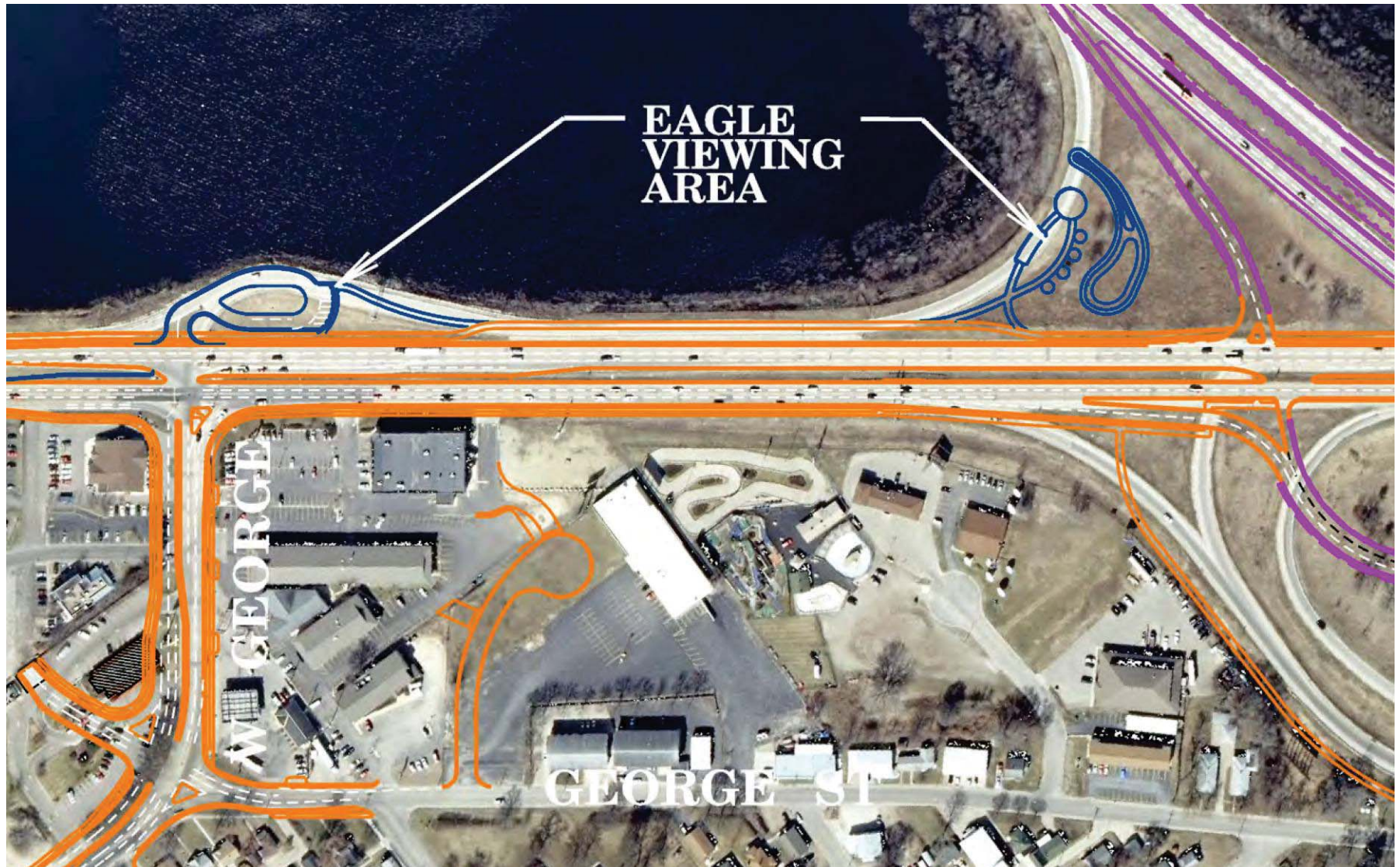
# Eagle Viewing Area

- ▶ Proposed by the City of La Crosse
- ▶ Constructed in 2017–2018 along with Rose Street construction project (depends on available funding)





# Eagle Viewing Area



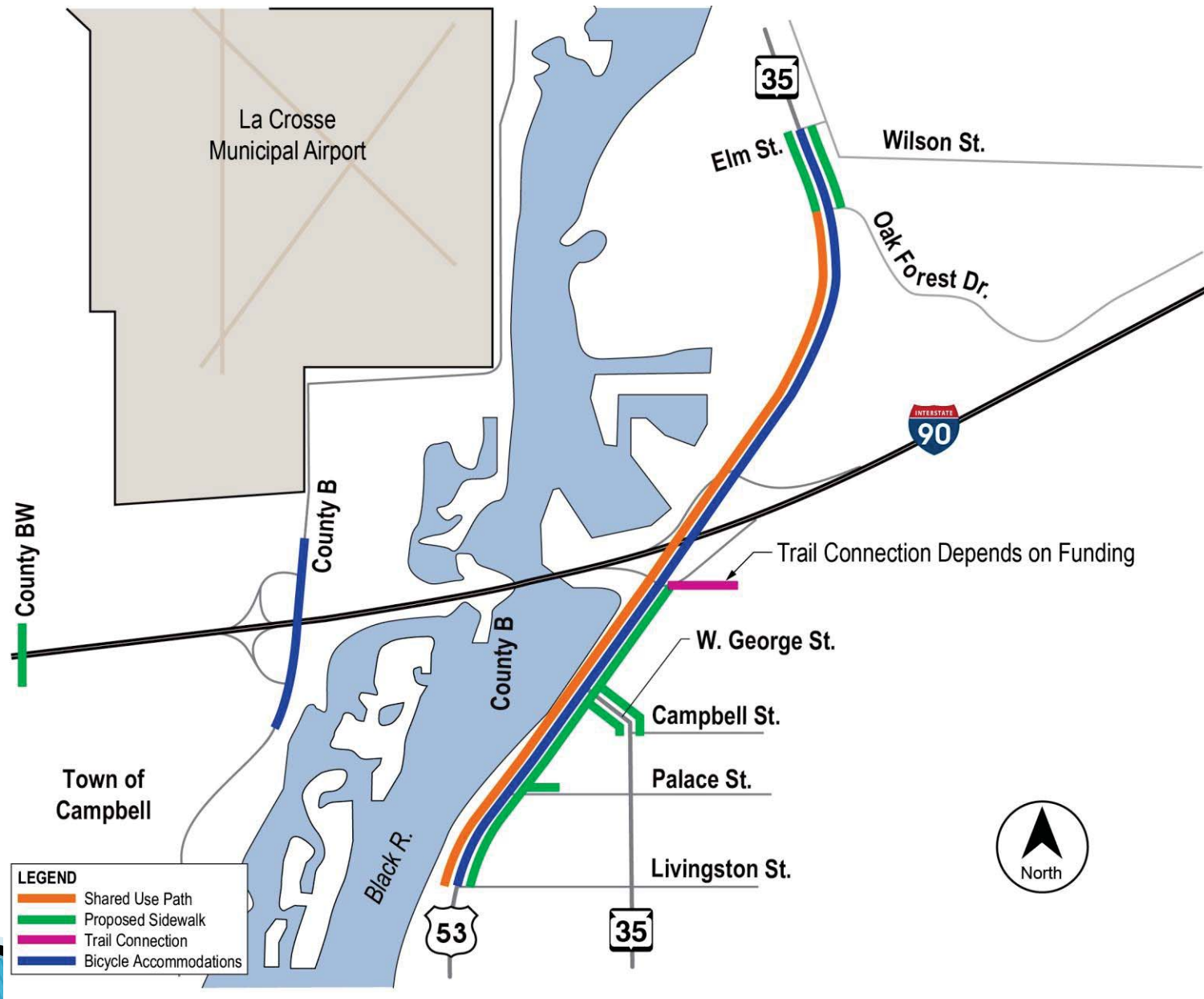


# Bicycle/Pedestrian Accommodations

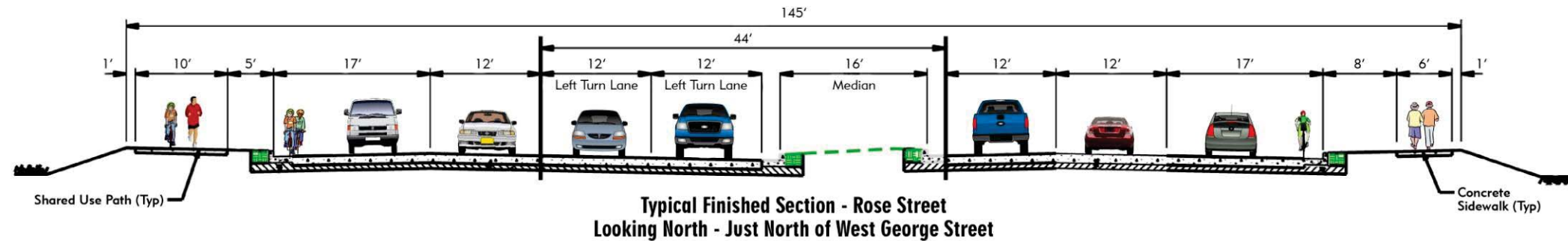
- ▶ TRANS 75 (WI Complete Streets Law) requires inclusion of bicycle and pedestrian elements in certain highway projects
- ▶ WisDOT worked with local community representatives to determine bicycle and pedestrian elements
- ▶ Specific Improvements
  - Shared use path along west side of Rose St.
  - Sidewalk along east side of Rose St.
  - Sidewalk along both sides of W. George St.
  - CTH BW bridge includes sidewalk
  - CTH B includes paved shoulders



# Bicycle/Pedestrian Accommodations



# Rose Street Bicycle/Pedestrian Accommodations





# Community Sensitive Solutions

- ▶ Funding discussed with local officials
- ▶ Considering elements to include with funding
- ▶ Coordinated effort along the project

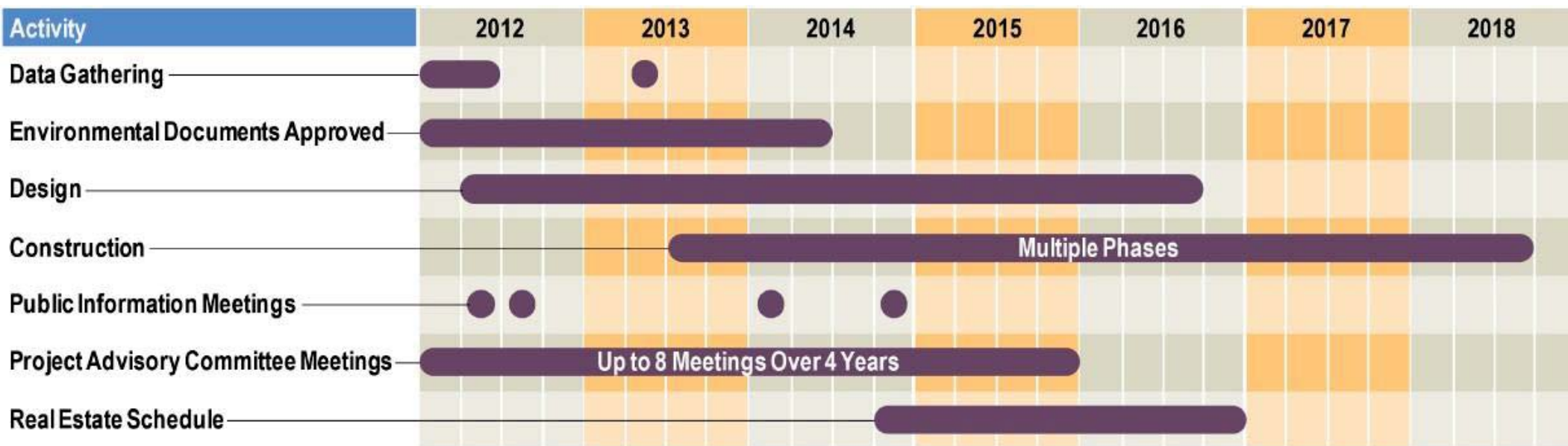


# Environmental Document

- ▶ I-90 Environmental Report approved October 2013
- ▶ Draft Environmental Report for US 53/WIS 35 – March 2014
- ▶ Floodplain Analysis



# Project Schedule

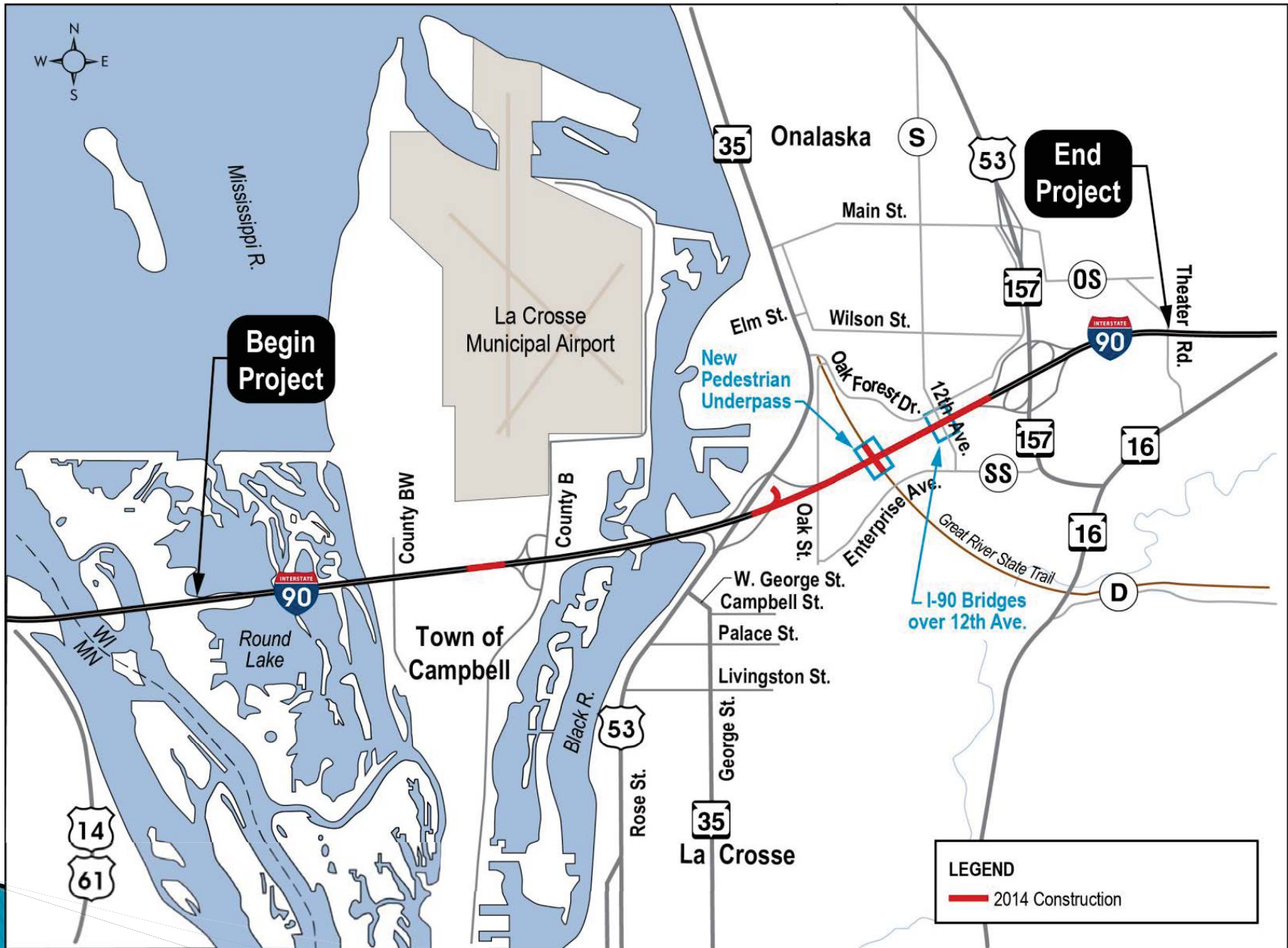




# Construction Schedule



# 2014 Construction



# Prep Project – 2014 Construction

- ▶ I-90 Mainline construction work
  - Temporary widening, crossovers, and ramp connections
  - Mill, repair, and overlay Eastbound I-90 bridge over Rose Street
  - I-90 Sign Structures
  - I-90 Bridges Over 12th Avenue
  - Great River State Trail (GRST) pedestrian underpass structure
  - Water main and sanitary sewer along the GRST
  - Freeway Traffic Management System (FTMS)





# Prep Project – 2014 Construction

- ▶ Anticipated impacts to traffic (coordinated with Dresbach Project)
  - Periodic off-peak lane closures along I-90
  - Continuous 12-day Eastbound I-90 single lane closure
  - Up to 12-day continuous closure of Eastbound I-90 to Northbound WIS 35 ramp
  - 12<sup>th</sup> Avenue closed mid-June until late August 2014
    - Remains open to bike/ped traffic
  - Great River State Trail closed start of construction until mid-September 2014
    - Posted detour follows Enterprise Ave and Oak Ave



# Prep Project – 2014 Construction

- ▶ Anticipated impacts to traffic (continued)
  - Up to 15 minute closures (rolling stops) on I-90 for sign bridge placement and removal
    - Monday through Thursday 12 AM to 4 AM
  - Potential off peak lane closures on Rose Street for I-90 bridge work overhead
  - Short term traffic shift on Enterprise Avenue for water main work



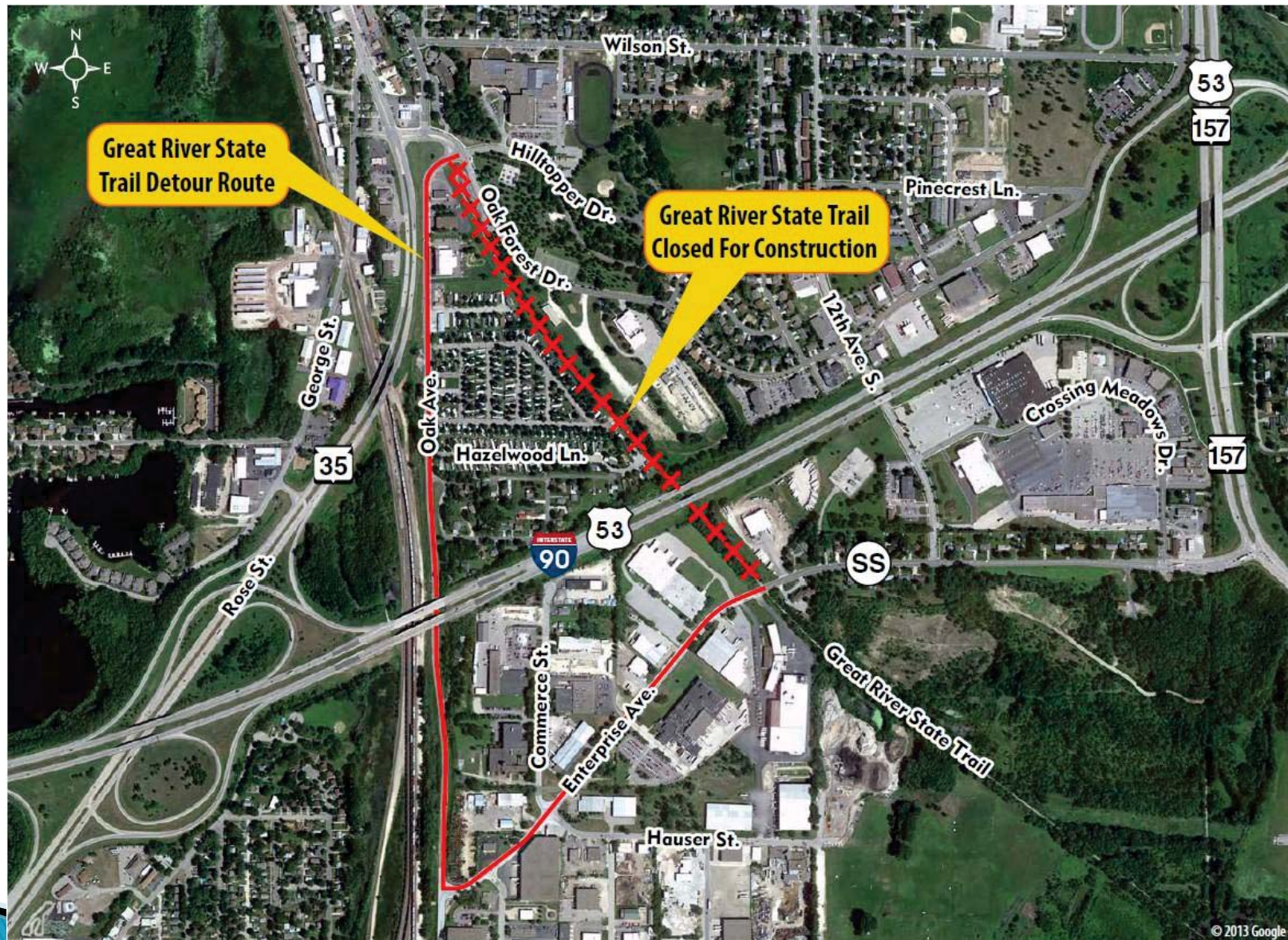
# Great River State Trail Crossing Under I-90

- ▶ Pedestrian/bicycle underpass to replace the existing I-90 structures
- ▶ Trail will be closed during construction; detour provided
- ▶ Proposed underpass similar to photo



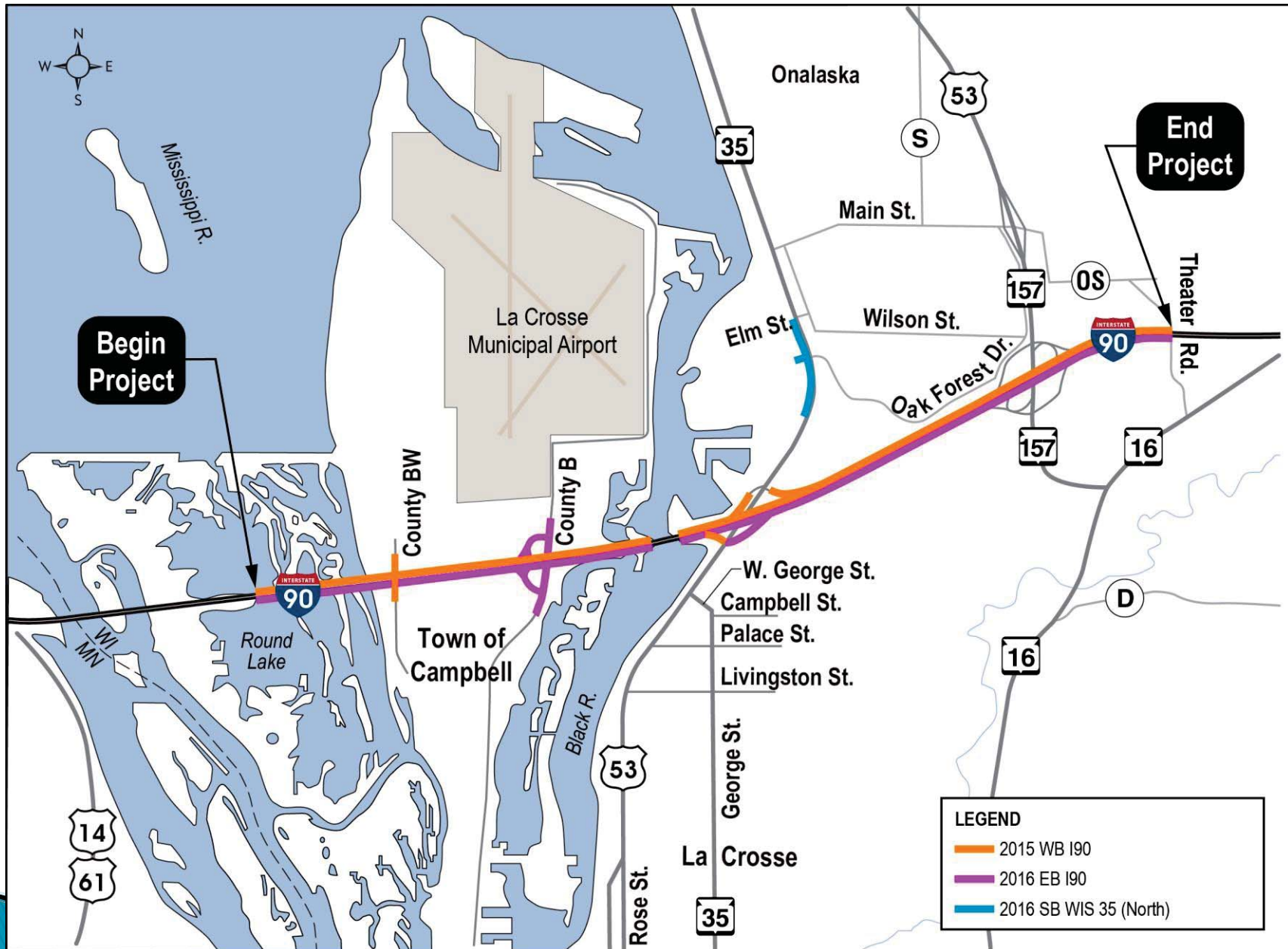


# Great River State Trail Detour





# 2015-2016 Construction

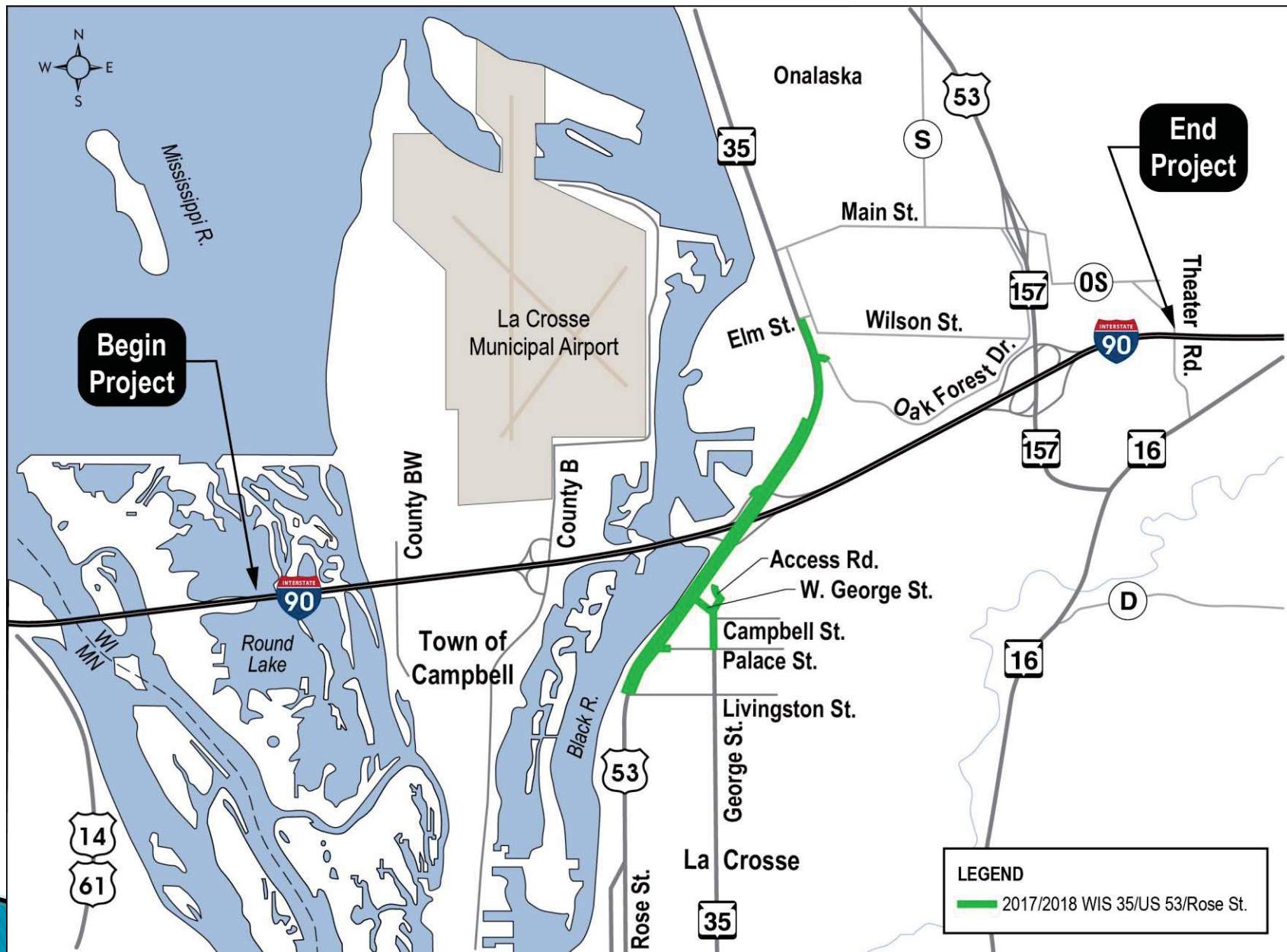


# I-90 Mainline

- ▶ I-90 remains open during construction
- ▶ CTH B ramps to remain open to traffic
- ▶ I-90/US 53/WIS 35 ramps may require periodic short term closures
- ▶ 60% Plans submitted to WisDOT mid-November 2013
- ▶ Plan includes
  - I-90 Eastbound and Westbound
  - CTH B
  - CTH BW
  - Staging is coordinated with the Dresbach Bridge project



# 2017-2018 Construction



# US 53 /WIS 35 Rose Street

- ▶ Reconstruction from Livingston St to 2<sup>nd</sup> Ave
- ▶ W. George Street reconstruction
- ▶ Traffic maintained on Rose and W. George Streets during staged construction
- ▶ Dual right turn lanes to Eastbound I-90 ramp from Northbound Rose Street





# Moving Forward



I 90 Reconstruction Project

# Public Outreach and Website

WISCONSIN DEPARTMENT OF TRANSPORTATION

## Plans & Projects

DMV | Safety | Travel | Plans & Projects | State Patrol | Doing Business | Programs for Local Gov't

Home | News | About Us | Research & Library | A-Z Index

Search

SW region Plans, studies and projects

I-90 Reconstruction

Sign up for project updates

Need/purpose

Schedule

Maps

Environmental documents

Public involvement

Related info.

Contacts

### I-90 Reconstruction Campbell, La Crosse, and Onalaska, La Crosse County

Location | Overview | Status/phase

View updated Project schedule (printable version)

**Project location**

**I-90 reconstruction**

- I-90, Round Lake Bridge (Campbell) to Theater Rd. (Onalaska), in La Crosse County.

**I-90/US 53/WIS 35 interchange reconstruction**

- US 53 (Rose St) from Livingston St. to I-90/US 53/WIS 35 interchange
- WIS 35 from Campbell St. (La Crosse) to Elm St. (Onalaska)

**WIS 157 Bridge construction**

- WIS 157 eastbound and westbound bridges over I-90.

**Project overview**

**I-90 reconstruction**

- Recondition 2.2 miles of I-90 mainline pavement, Round Lake to the Black River
- Reconstruct approximately two miles of I-90, BNSF Railroad to Theater Rd. Work includes constructing auxiliary lanes from US 53/WIS 35 to WIS 157, structure widening, re-decking or replacement.

**I-90/US 53/WIS 35 interchange reconstruction**

- Reconstruct I-90/US 53/WIS 35 interchange
- Reconstruct Rose St. ((US 53/WIS 35), Livingston St. in La Crosse to Elm St. in Onalaska, including replacement of southbound WIS 35 bridge over BNSF Railroad and rehabilitation of northbound WIS 35 bridge over the BNSF Railroad
- Reconstruct W. George St. (WIS 35) between Rose St. and Campbell St. in city of La Crosse

**WIS 157 Bridge construction**

- Re-deck and overlay of WIS 157 structures over I-90

**Map**

Map Sat Ter Earth

View SW, I-90 Reconstruction in a larger map.

**Key**

Project location Project limit

http://www.dot.state.wi.us/travel/index.htm

► <http://www.dot.state.wi.us/projects/swregion/90/index.htm>



I 90 Reconstruction Project

# Discussion

