



I-90/US 53/WIS 35

Public Information Meeting Meeting #2

September 20, 2012

AYRES
ASSOCIATES

Welcome and Introductions

- ▶ Anthony VanderWielen, WisDOT Project Manager
- ▶ Bruce Ommen, Ayres Associates



Agenda

- ▶ Mini-study wrap-up
- ▶ Project Overview
- ▶ Project Update
 - Traffic Analysis
 - West George Street Concepts
 - Construction Staging
 - Bicycle/Pedestrian Accommodations
 - Environmental Coordination
- ▶ Schedule
- ▶ Public Outreach
- ▶ Discussion



Mini-Study (Exit 3) Wrap-up

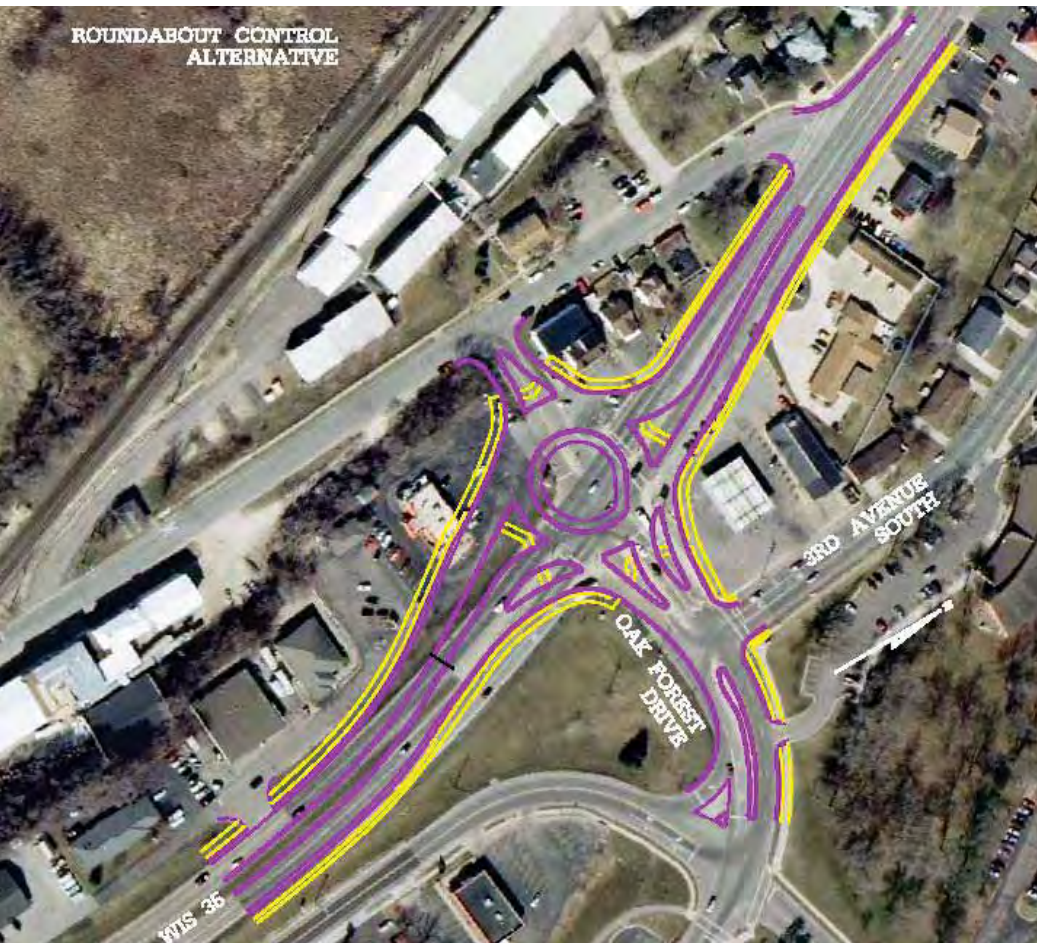
- ▶ Local partners studied moving Exit 3 including US 53/WIS 35 down to Livingston to expand river opportunities
- ▶ The Exit 3 Study was separate from I-90 Reconstruction Project
- ▶ In May 2012, La Crosse City Council elected not to pursue further study to move the interchange



Project Overview



Oak Forest Dr. and Rose St.



Roundabout Alternative



**PREFERRED: Traffic Signal
Alternative**

Project Update: West George St. Concepts

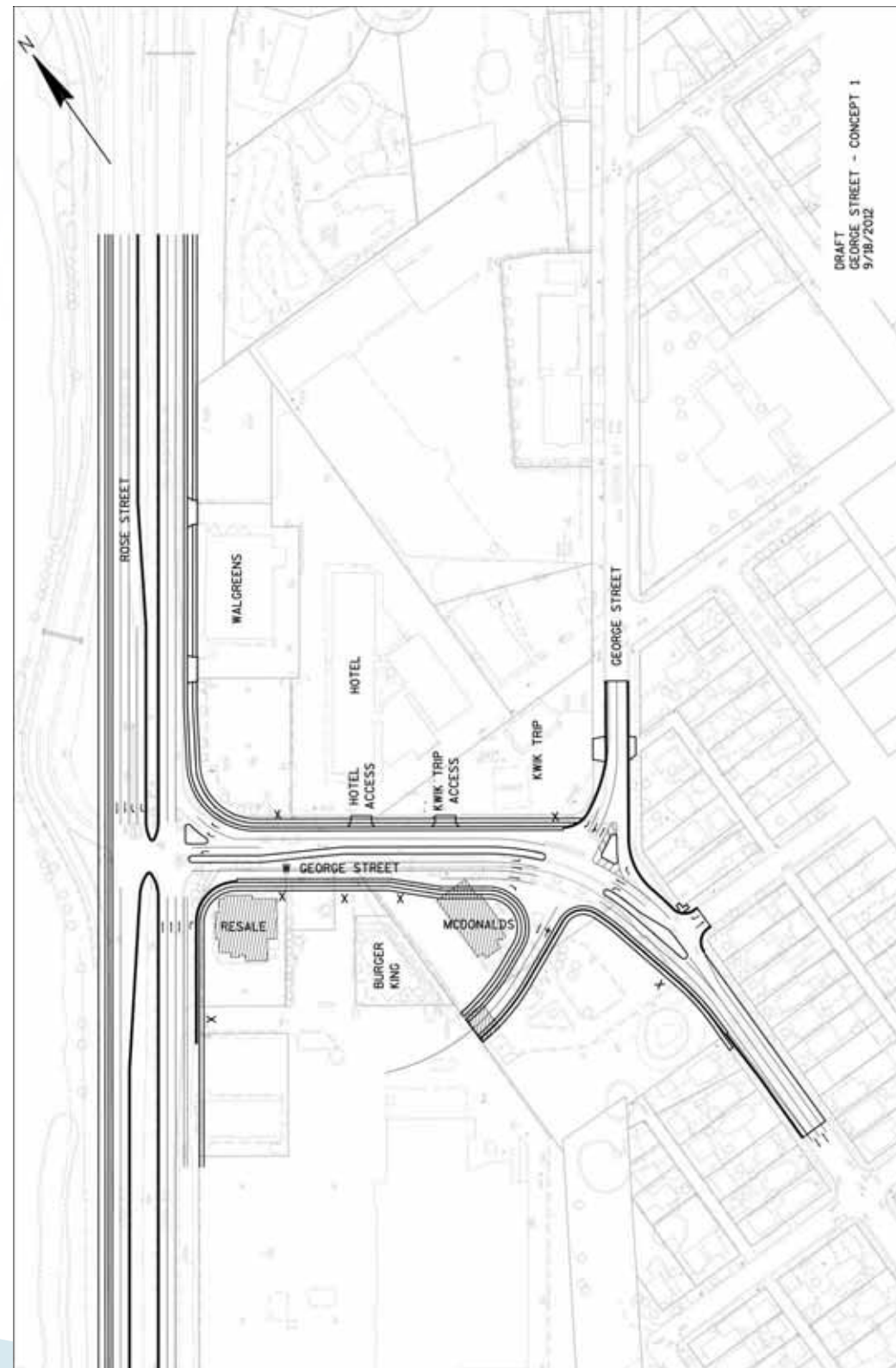


Why Reconstruct West George Street?

- ▶ Access locations
- ▶ Traffic flow
- ▶ Bike and pedestrian accommodations
- ▶ Long-term redevelopment

West George St. Concept 1

- ▶ Shared Access
South of George St.
- ▶ 4-Leg W.
George/George St.
Intersection
- ▶ Right In/Right Out
for Hotel and Kwik
Trip
- ▶ 2 Relocations



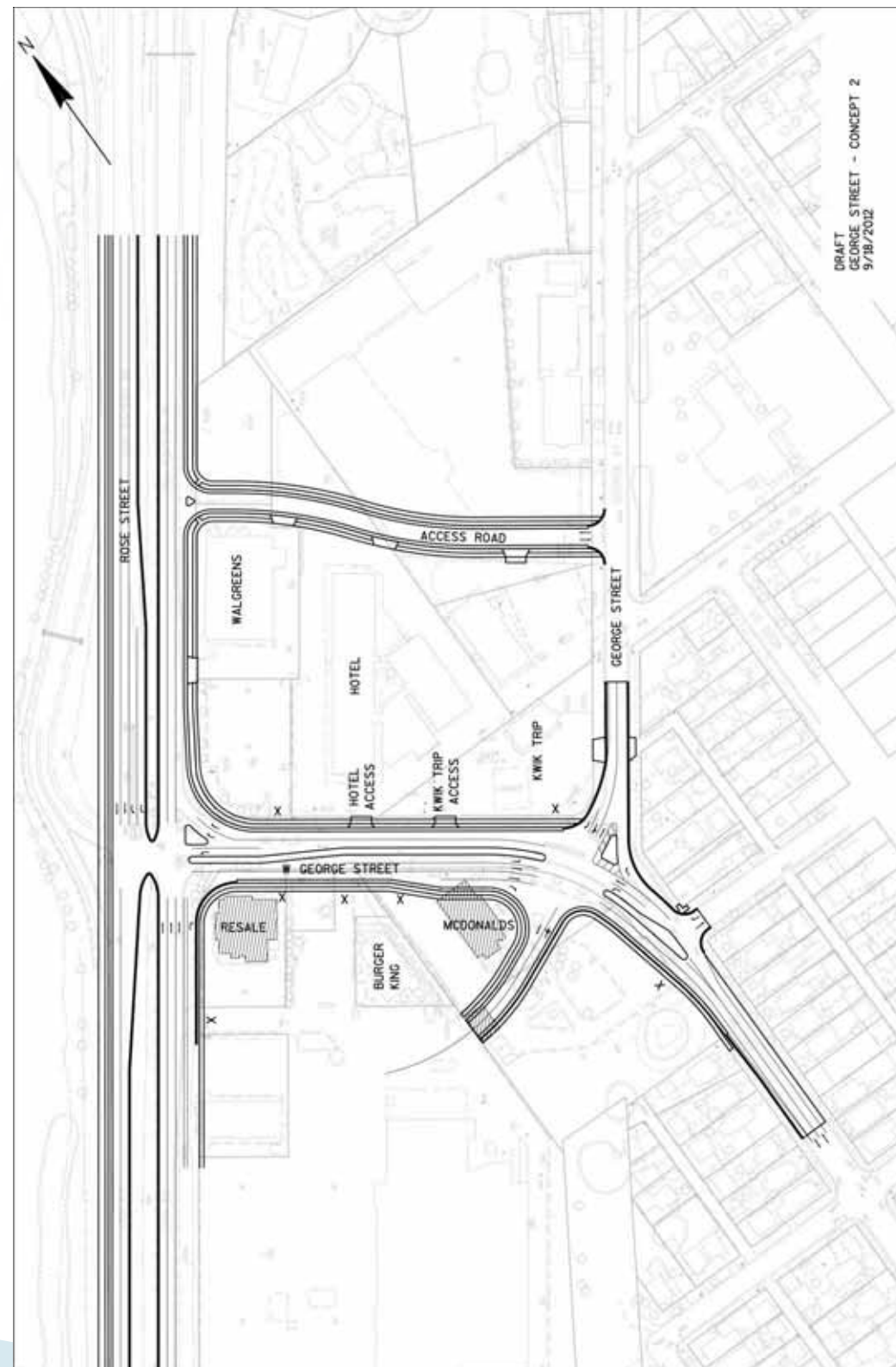
DRAFT
GEORGE STREET - CONCEPT 1
9/19/2012



Preliminary
September 2012

West George St. Concept 2

- ▶ Shared Access South of George St.
- ▶ 4-Leg W. George /George St. Intersection
- ▶ Access Road North of George St.
- ▶ 2 Relocations



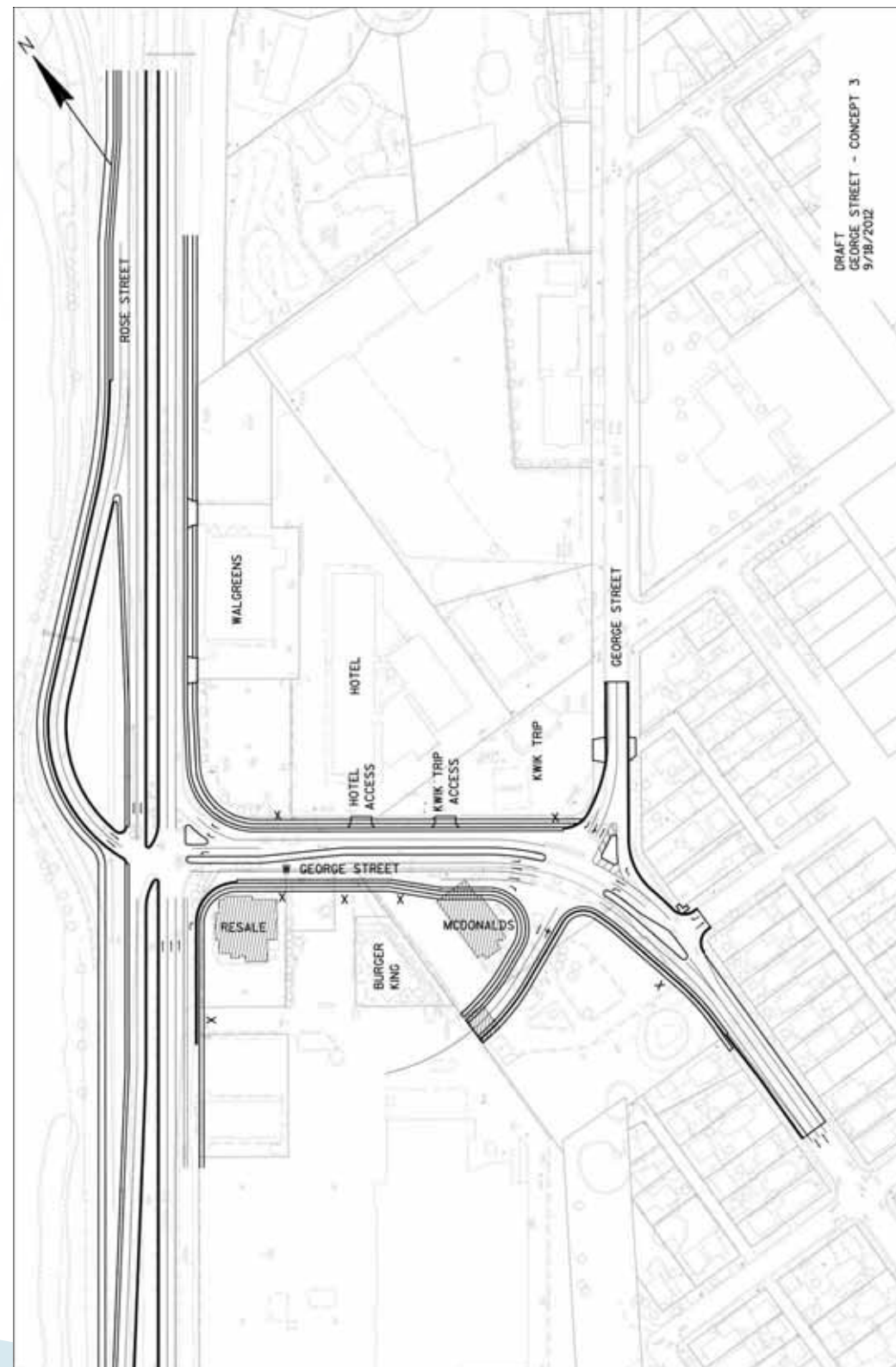
DRAFT
GEORGE STREET - CONCEPT 2
9/19/2012



Preliminary
September 2012

West George St. Concept 3

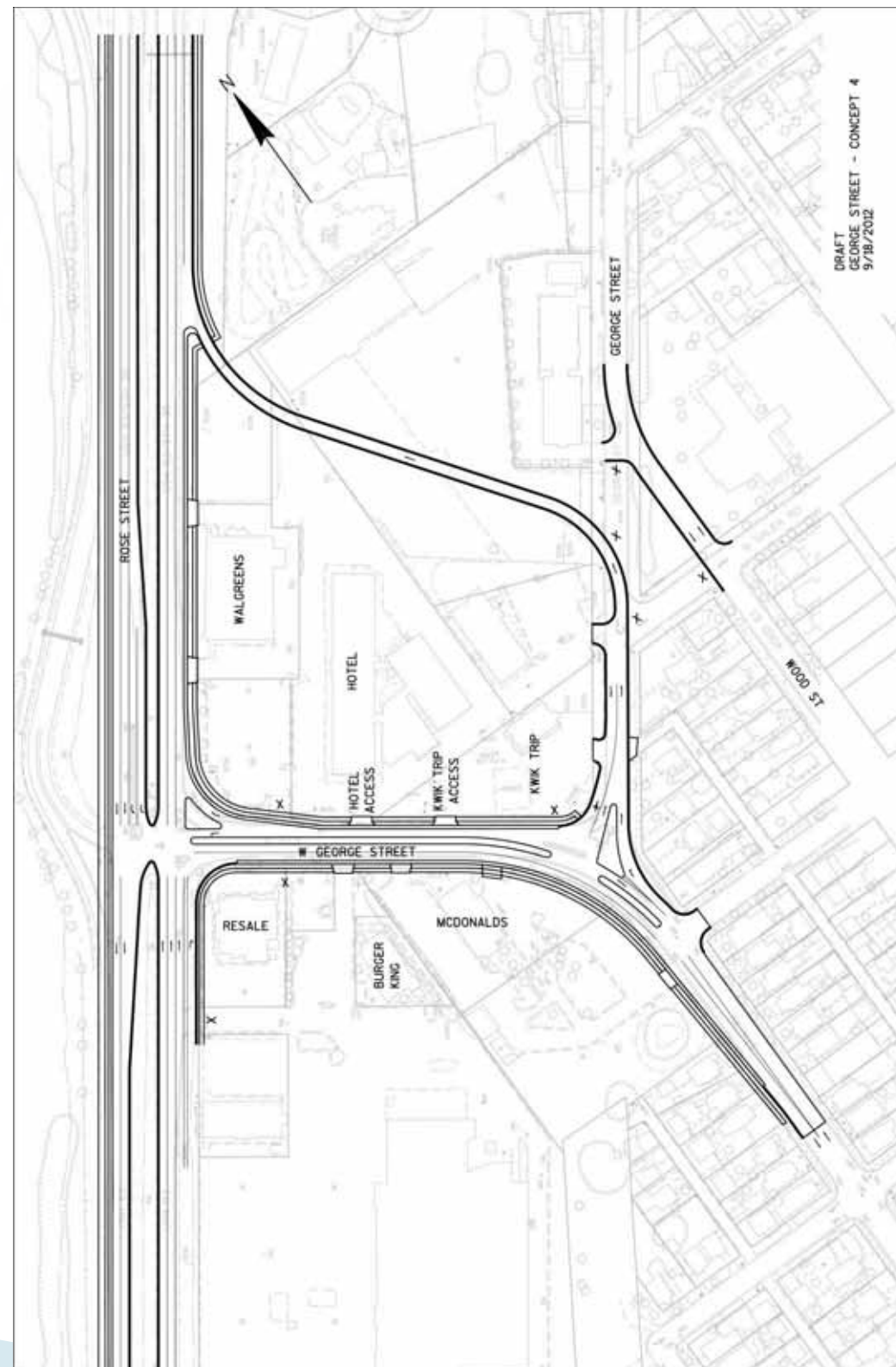
- ▶ Access Same as Alternative 1
- ▶ Modified Southbound Rose St. Left Turns
- ▶ 2 Relocations



Preliminary
September 2012

West George St. Concept 4

- ▶ W. George St.
Driveways – Right
In/Right Out
- ▶ Separated George St.
Right Turns
- ▶ Divert George St. to
Wood St.
- ▶ No Relocations
- ▶ Additional ROW
Required

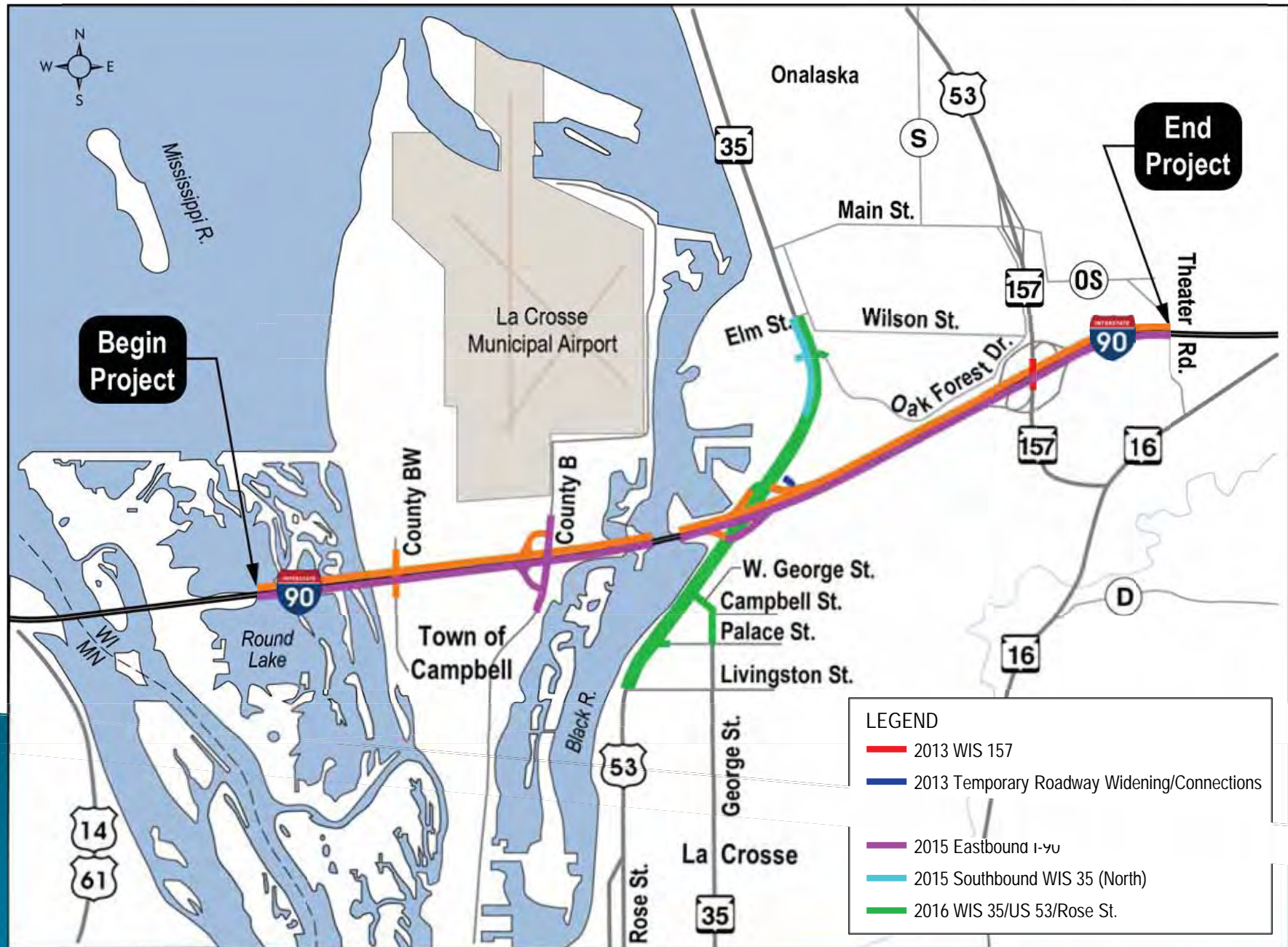


Construction Staging

- ▶ Current Traffic Maintenance Assumptions
 - Project built over 4 construction seasons; 2013–2016 (may extend into 2017)
 - Assumptions include:
 - I-90: open to traffic
 - US 53/WIS 35: open to traffic
 - County Road B: open to traffic
 - County Road BW: closed to traffic
 - WIS157: Open to traffic during construction
 - 12th Ave: closed to traffic during bridge construction



Construction Staging



Bicycle/Pedestrian Accommodations

- ▶ TRANS 75 (WI Complete Streets Law) requires inclusion of bicycle and pedestrian elements in certain highway projects
- ▶ WisDOT now working with local community representatives to determine bicycle pedestrian elements
- ▶ Specific Rose St. Questions Include:
 - Best way to provide safe on-street bike travel?
 - Where should bike/ped crossings be located



Bicycle/Pedestrian Accommodations




County B and BW



Bicycle/Pedestrian Accommodations

Rose Street

LEGEND

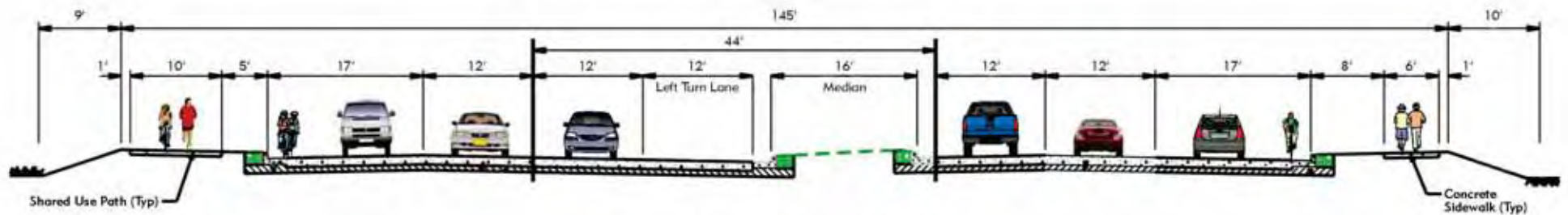
-  Sidewalk
-  Shared use path
-  Great River State Bike Trail

Note: No grade separated crossings are proposed along Rose St. and on-street bike accommodations will be provided along Rose St. from Livingston St. to Elm St.



Preliminary
September 2012

Rose Street Bicycle/Pedestrian Accommodations



Typical Finished Section - STH 35/53

Great River State Trail Crossing Under I-90

- ▶ Evaluating use of pedestrian/bicycle underpass under I-90 to replace the existing structure
- ▶ Trail will be closed during construction; detours on local streets will be provided



Environmental Coordination: Floodplain Impacts

- ▶ Majority of project within or adjacent to Black River floodplain
- ▶ Project may encroach on floodway
- ▶ Communicate with Wisconsin DNR and local floodplain managers
- ▶ Desire to construct Rose Street 2' higher than 100-year floodplain

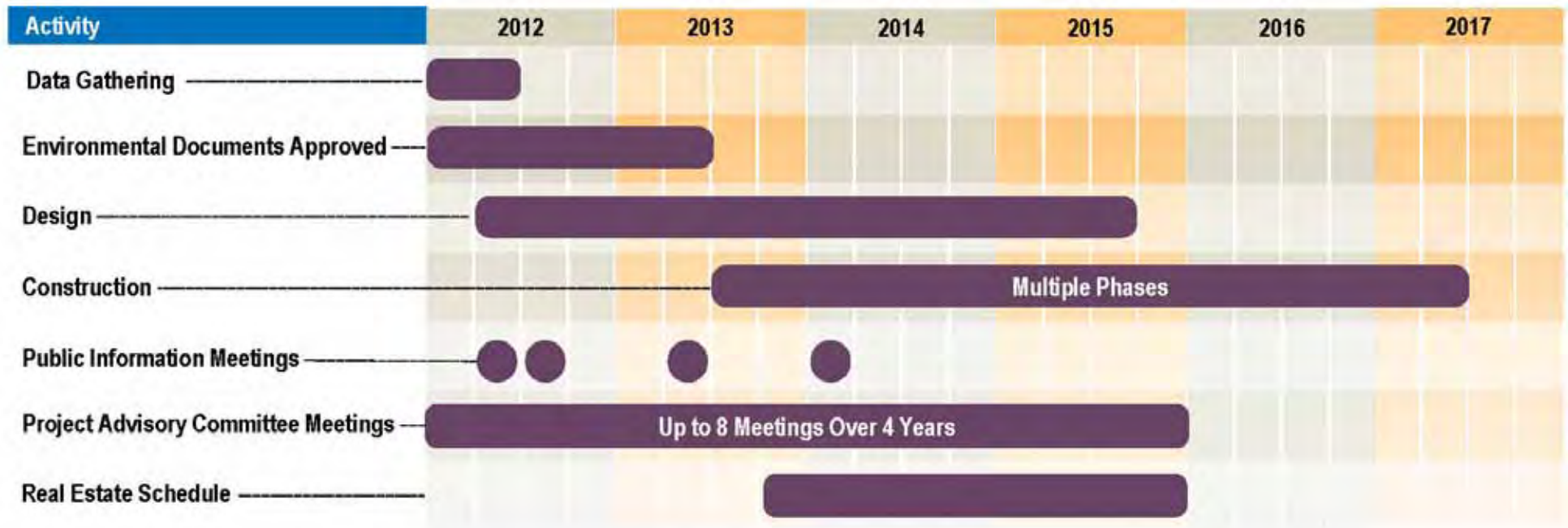


Environmental Coordination: Agency Responses

- ▶ Wisconsin Department of Natural Resources
- ▶ Bureau of Aeronautics



Project Schedule



Public Outreach



Public Outreach

- ▶ Public Information meetings—4 scheduled during project, including construction
 - 1st meeting held on April 12th
 - 2nd meeting held on Sept. 20th
- ▶ Newsletter

Project Newsletter
I-90 Reconstruction
September 2012
La Crosse County

Introduction


The Wisconsin Department of Transportation (WisDOT) is continuing to plan a range of improvements to Interstate 90 (I-90)—between Round Lake and Theater Road (just east of the WIS 157 interchange), and to US 53 and WIS 35 (see the map on the inside of this newsletter). Since the last public information meeting held in April 2012, WisDOT has continued to work on the engineering and environmental studies that are needed before construction begins in 2013.

Construction on I-90 includes major repairs and bringing the highway up to current design standards. Work on US 53 and WIS 35 also involves repairs as well as a new interchange configuration at Exit 3. WisDOT is working with local communities throughout design. This includes considering how bicycle and pedestrian accommodations might be included in the project, and how traffic will flow during construction.

Second Public Information Meeting September 20

The second public information meeting for the I-90 Reconstruction Project will be held on Thursday, September 20th, from 5-7:00 p.m. at Logan Middle School, located at 1450 Avon Street, La Crosse, WI 54603. A presentation will be given at 6:00 p.m. Interested individuals are welcome to stop by anytime during the meeting. The team will consider input received at this meeting when designing I-90 improvements.

Please use the side door near the auditorium, located on Avon Street to enter the middle school.



Logan Middle School
1450 Avon Street
La Crosse


Contact information:

For more information about the I-90 Reconstruction Project contact:

Anthony VanderWielen, PE
Project Manager
WisDOT – Southwest Region
La Crosse Office
3550 Mormon Coulee Road
La Crosse, WI 54601
(608) 789-7878
Anthony.VanderWielen@dot.wi.gov

Bruce Ommen, PE
Ayras Associates
3433 Oakwood Hills Parkway
Eau Claire, WI 54701
(715) 834-3161
OmmenB@AyrasAssociates.com

Charlie Webb
CH2M HILL
135 South 84th Street,
Suite 400
Milwaukee, WI 53214
(414) 847-0248
Charlie.Webb@ch2m.com



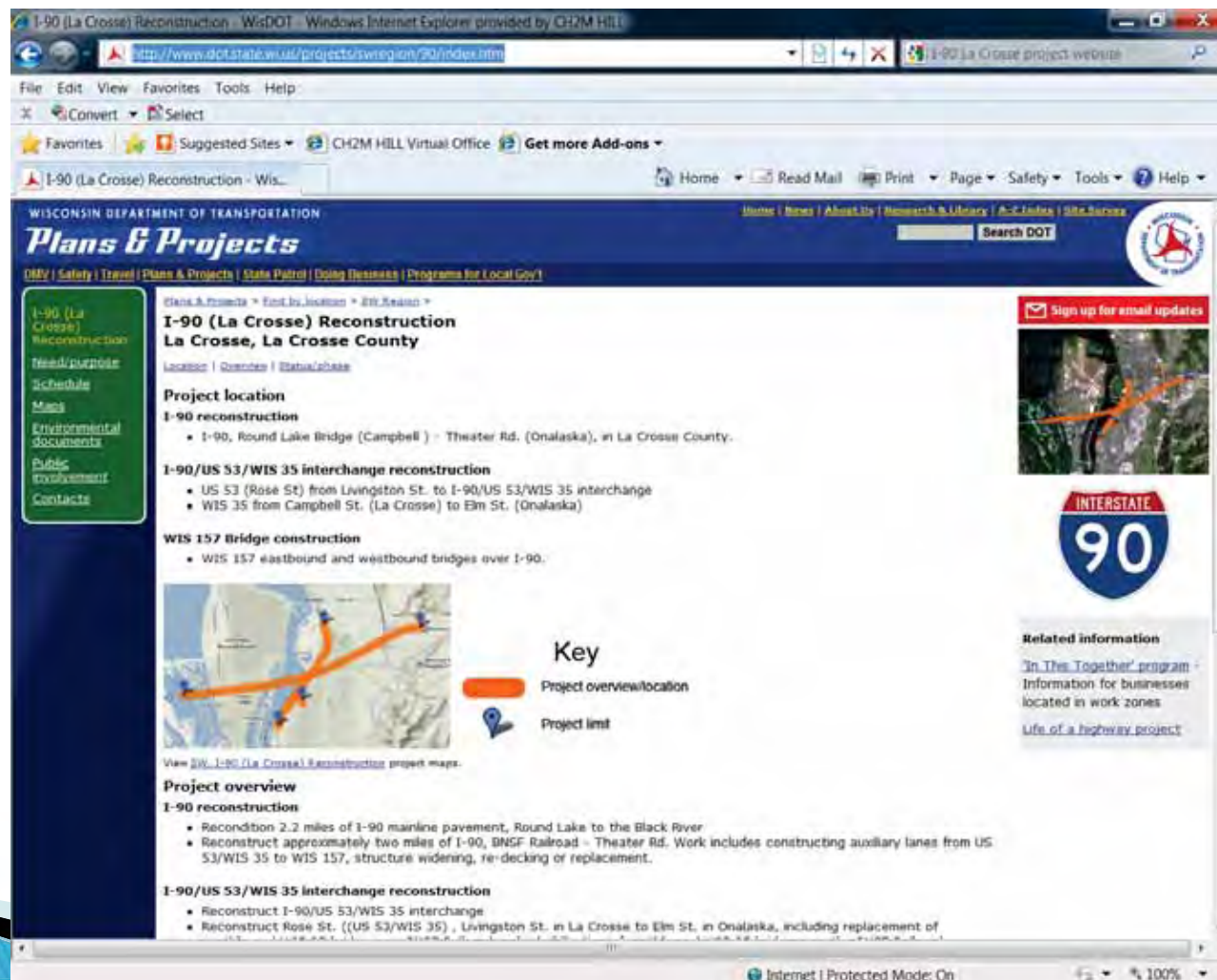
Wisconsin Department of Transportation - Dedicated people creating transportation solutions through innovation and exceptional service.



Public Outreach

► Project Website now live:

<http://www.dot.wi.gov/projects/swregion/90/index.htm>



Discussion

