

Public Information Meeting

Project Overview

WisDOT is planning a range of improvements for I-90, between Round Lake and Theater Road (just east of the WIS 157 interchange) (see the map on other side of the page). These improvements include replacing pavement on I-90; reconfiguring/reconstructing the I-90/WIS 35/US 53 (Exit 3) interchange; and reconstructing WIS 35/US 53 between Livingston and Elm Streets.

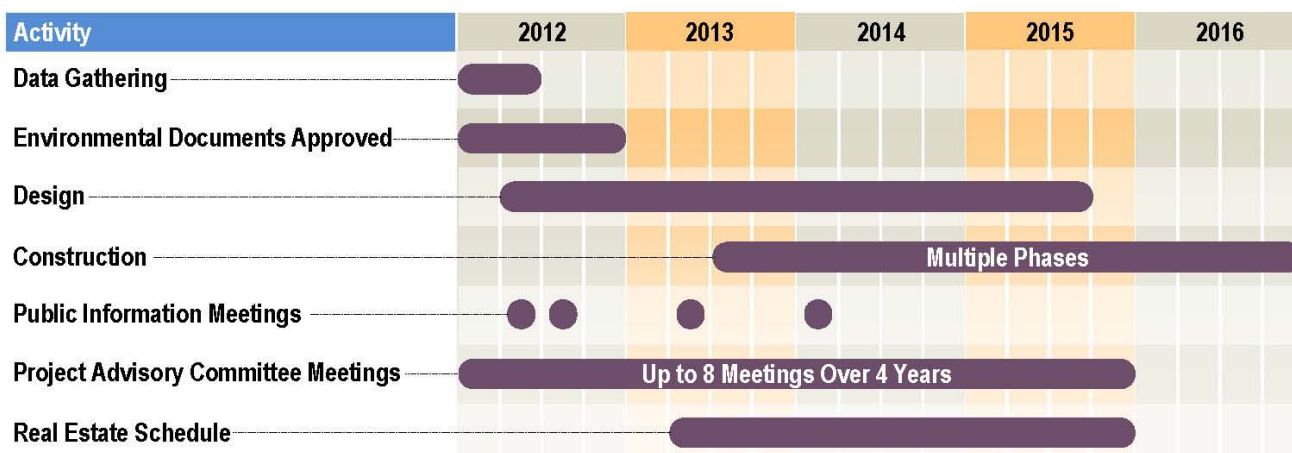
Tonight's Meeting

The purpose of tonight's meeting is to provide information about the I-90 reconstruction project. Several members of the I-90 reconstruction project team are on hand to provide information about the project and answer questions. Tonight's meeting is in an open house format; you are free to look at exhibits and talk to staff members. There will be a brief presentation at 6 p.m. to go over key aspects of the project.

How is This Project Related to the "Exit 3 Study"?

WisDOT is not involved in the La Crosse County and City of La Crosse study of whether to move Exit 3 east and realign Rose Street to the east, referred to as the Exit 3 Study. The Exit 3 Study was the subject of the March 14 public meeting at Logan High School. If the City and County decide the idea of moving the interchange east should be considered in more detail, WisDOT will consider that as one alternative it looks at as Exit 3 reconstruction plans are developed. WisDOT would prepare an Environmental Impact Statement (EIS) to document the benefits and impacts of moving the interchange.

Project Schedule



Project Contacts:

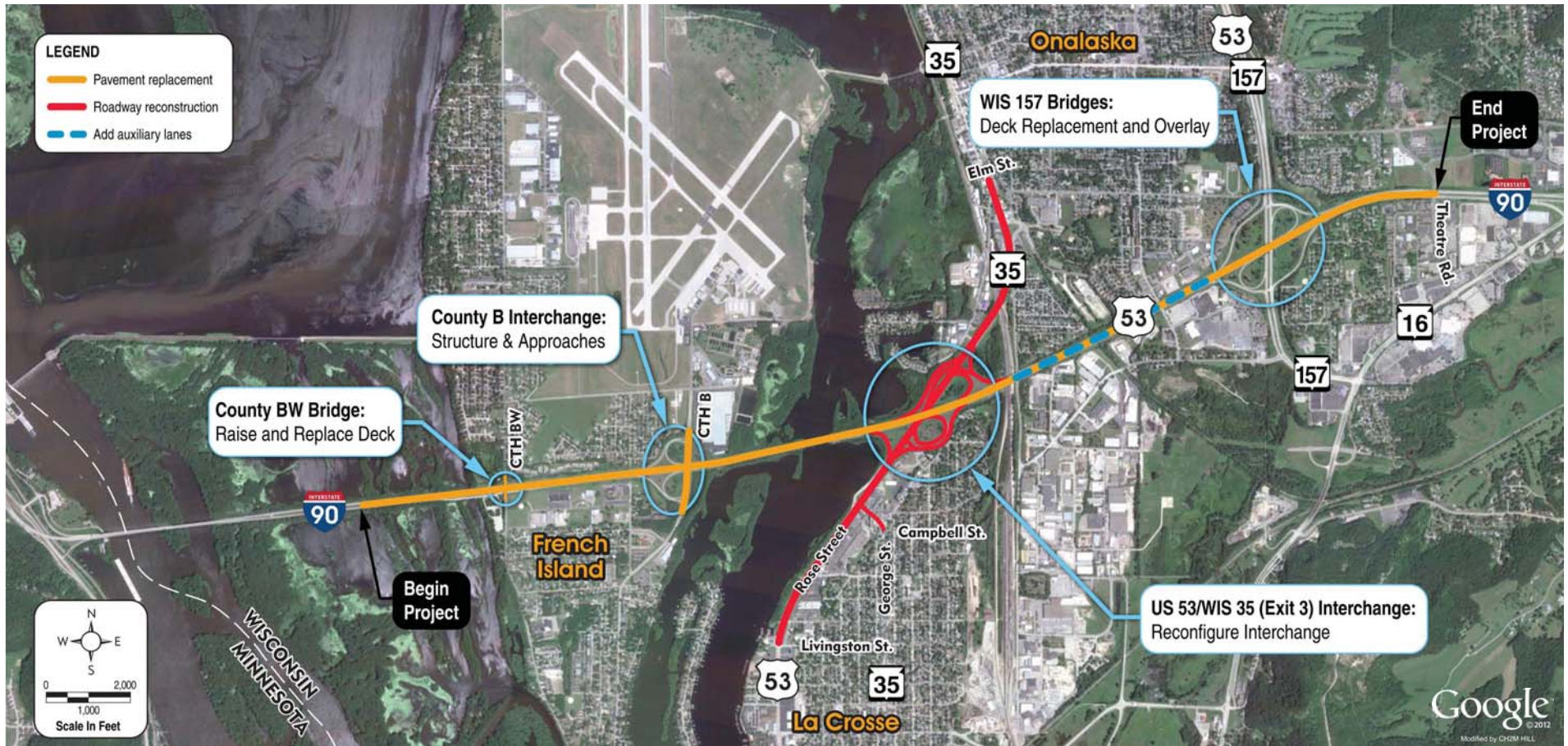
Anthony VanderWielen, PE
Project Manager
WisDOT - SW Region
La Crosse Office
3550 Mormon Coulee Rd.
La Crosse, WI 54601
(608)789-7878
Anthony.VanderWielen@dot.wi.gov

Bruce Ommen, PE
Ayres Associates
3433 Oakwood Hills Prky.
Eau Claire, WI 54701
(715)834-3161
OmmenB@AyresAssociates.com

Charlie Webb
CH2M HILL
135 South 84th St. Ste. 400
Milwaukee, WI 53214
(414)847-0248
Charlie.Webb@ch2m.com



Project Overview



La Crosse County, WI

I-90 Reconstruction Project