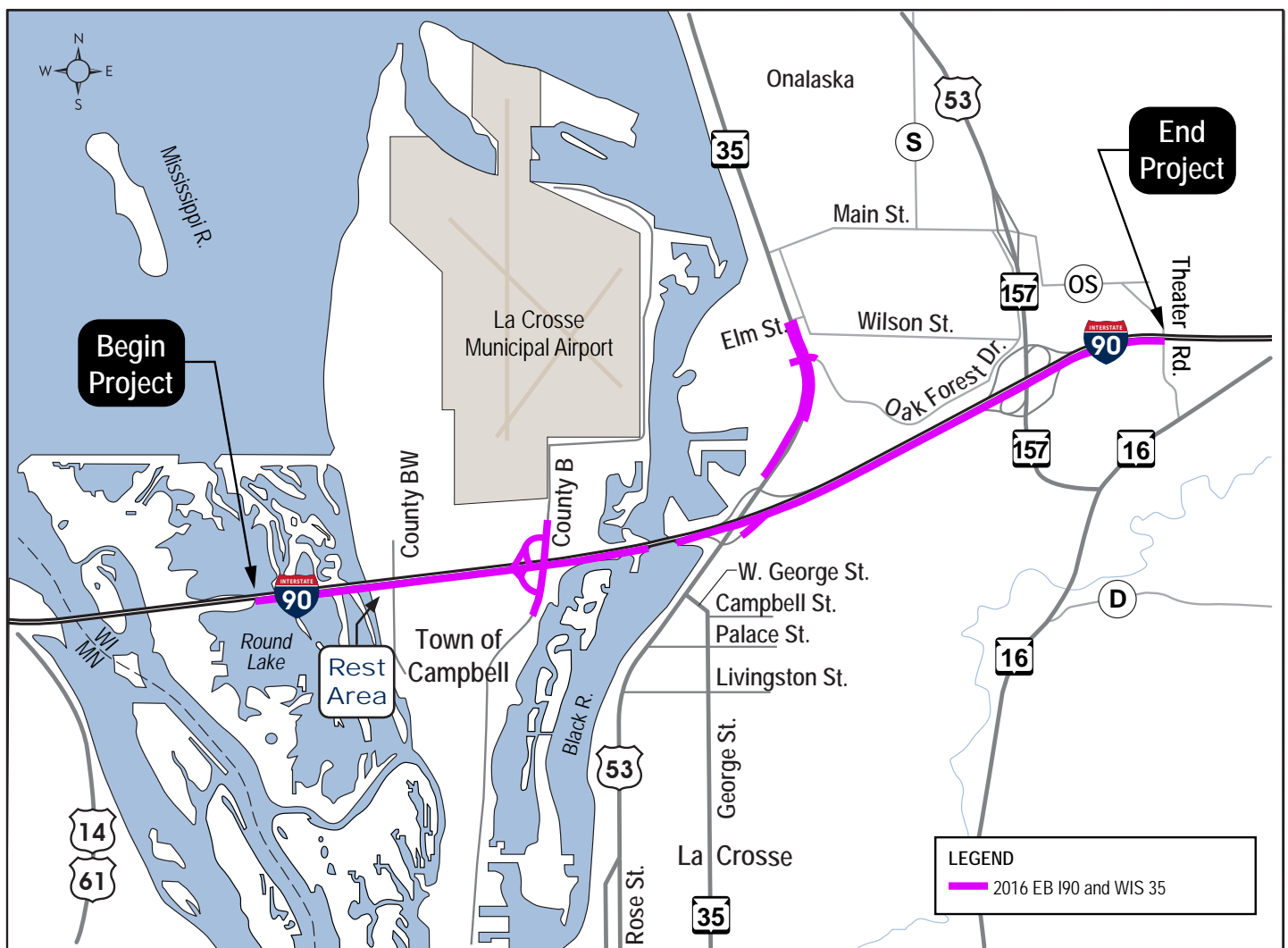


I-90 Reconstruction Project

2016 Construction and Traffic Impacts

2016 construction will include the eastbound lanes of I-90 from the State Line to Theater Road and WIS 35 from the railroad to Elm Street. Major structure work includes the eastbound I-90 bridges over US 53/Rose Street and the French Slough, the County B bridge over I-90, southbound WIS 35 bridge over the railroad, and overhead sign structures. The Rest Area will be closed and reconstructed under a separate project. See the below map and on the back for the location of construction operations and anticipated impacts on traffic.



I-90 Reconstruction Project

Anticipated impacts to traffic during 2016 construction include:

- All roadways remain open except as noted below
- I-90 reduced to one-lane in each direction from State Line to US 53/Rose Street and a portion of I-90 under WIS 157
- WIS 35 reduced to one-lane in each direction from the railroad to Elm Street
- Sidewalk and bike route from Oak Forest Drive to Elm Street closed and detoured
- WIS 157 northbound to I-90 westbound and WIS 157 southbound to I-90 eastbound loop ramps will be closed and detoured for the majority of the construction season (see *Figures A and B*)
- Potential ramp closures Monday through Friday 12:00 a.m.– 4:00 a.m.
- I-90 eastbound to WIS 35 northbound loop ramp will be closed and detoured most of the summer (see *Figure C*)
- County B reduced to one-lane in each direction
- Rest Area will be closed through Fall of 2016
- Potential lane closures on Rose Street during periods of low traffic volumes for work on the I-90 bridge
- Brief stops (up to 15 minutes) on I-90 and US 53/Rose Street for bridge and/or sign structure placement or removal to occur Monday through Friday 12:00 a.m.– 4:00 a.m.

Detour Plan



Figure A: Northbound WIS 157 to Westbound I-90



Figure B: Southbound WIS 157 to Eastbound I-90



Figure C: I-90 eastbound to WIS 35 northbound