

Project Overview



PRELIMINARY

September 2012



La Crosse County, WI

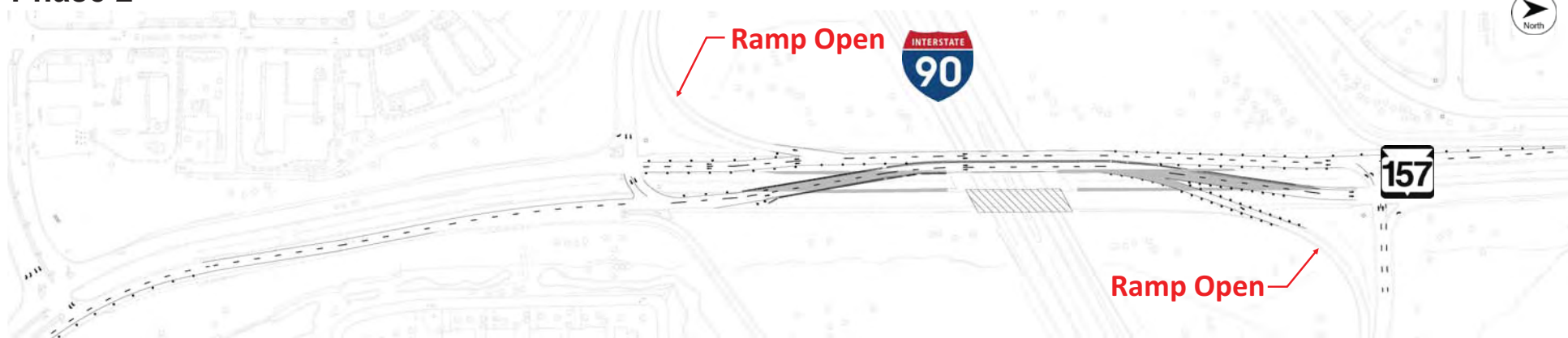
I-90 Reconstruction Project

WIS 157 Construction Staging - 2013

Phase 1



Phase 2



PRELIMINARY

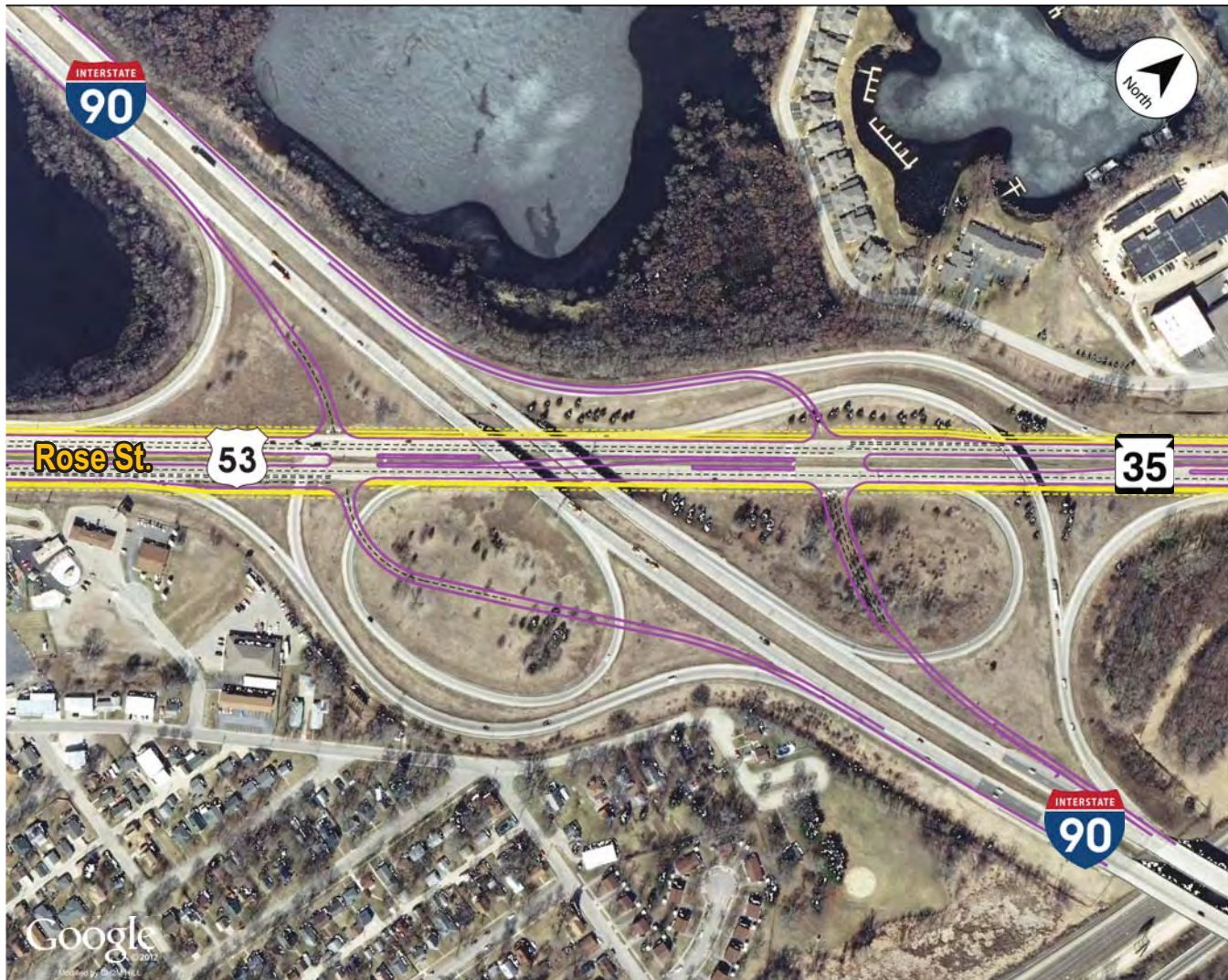
September 2012



La Crosse County, WI

I-90 Reconstruction Project

I-90/US 53/WIS 35 – Diamond Interchange Alternative



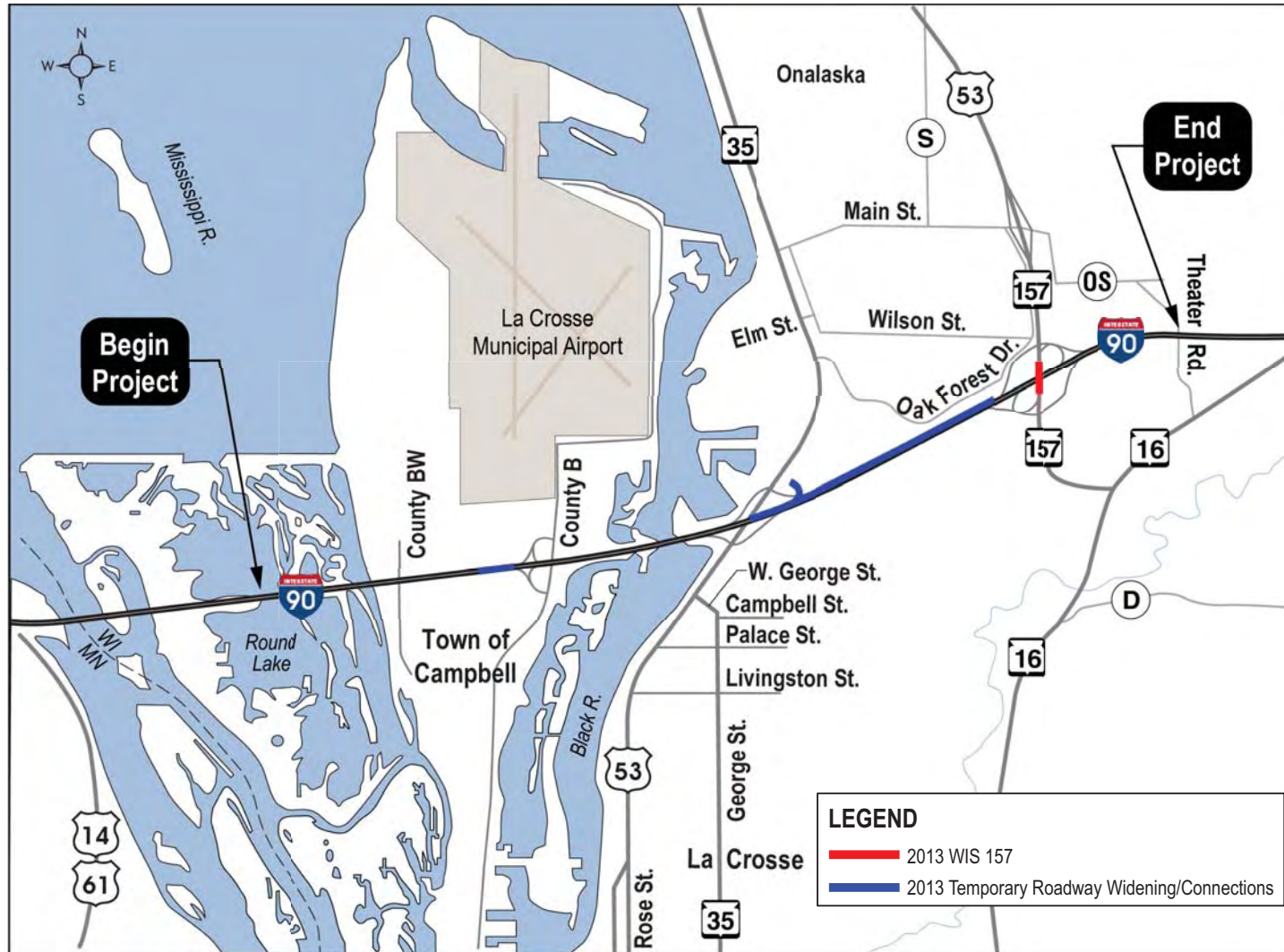
PRELIMINARY
September 2012

La Crosse County, WI

I-90 Reconstruction Project



Construction by Year - 2013



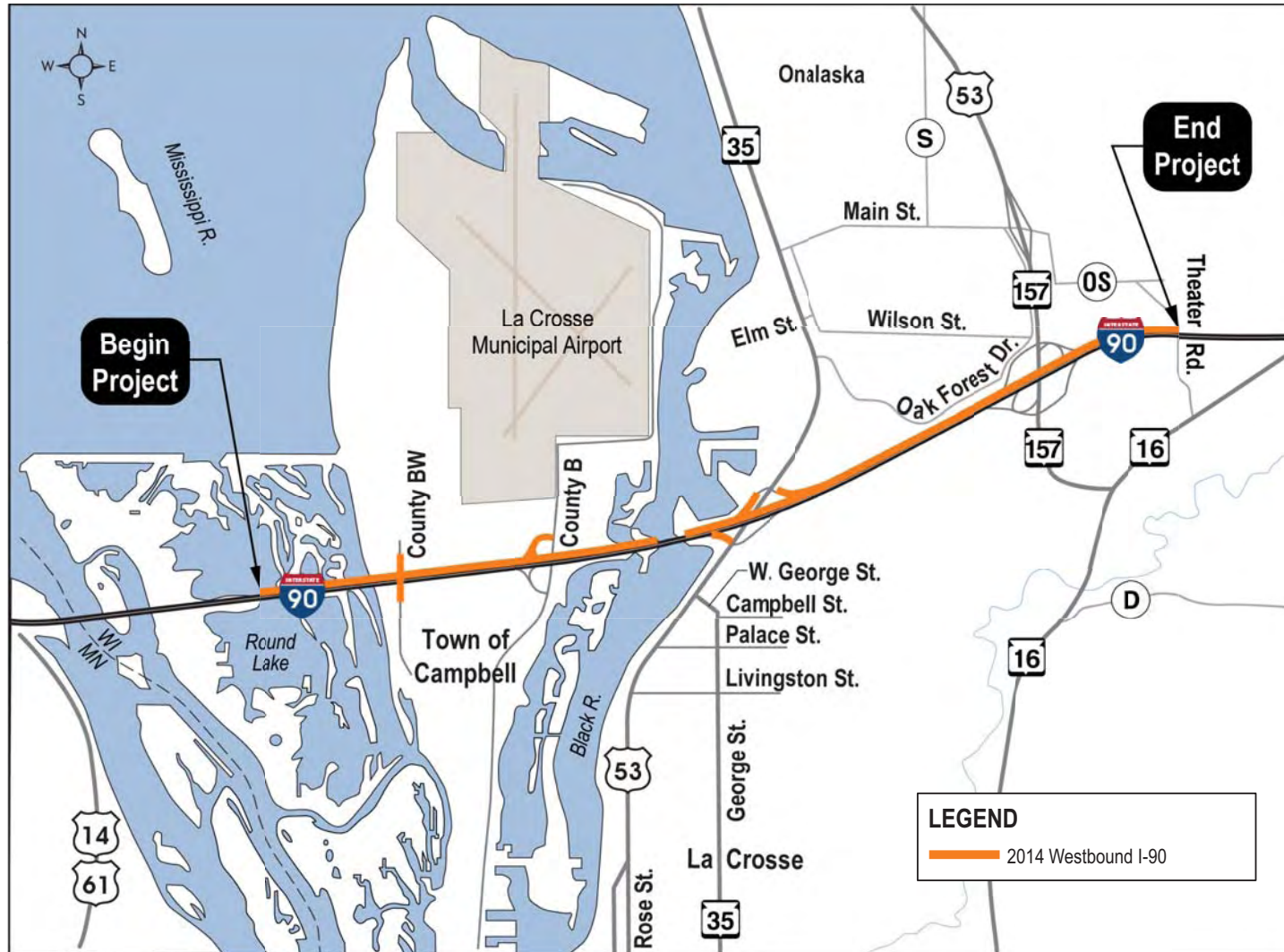
PRELIMINARY
September 2012

La Crosse County, WI

I-90 Reconstruction Project



Construction by Year - 2014



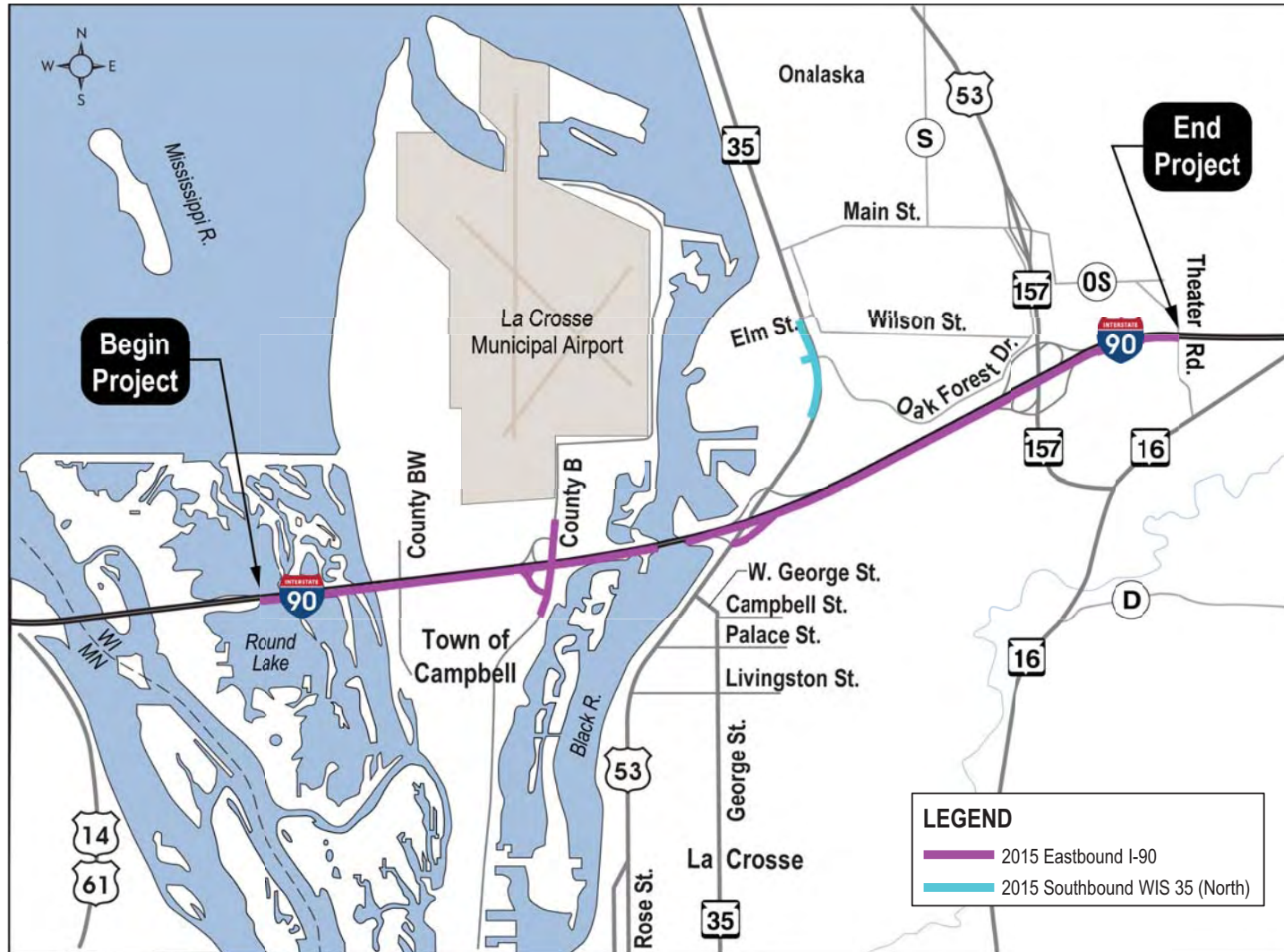
PRELIMINARY
September 2012

La Crosse County, WI

I-90 Reconstruction Project



Construction by Year - 2015



PRELIMINARY
September 2012

La Crosse County, WI

I-90 Reconstruction Project



Construction by Year - 2016



PRELIMINARY
September 2012

La Crosse County, WI

I-90 Reconstruction Project



Oak Forest Drive at Rose Street



Roundabout Alternative



PREFERRED: Traffic Signal Alternative

PRELIMINARY
September 2012



La Crosse County, WI

I-90 Reconstruction Project

Rose Street Bicycle/Pedestrian Connections



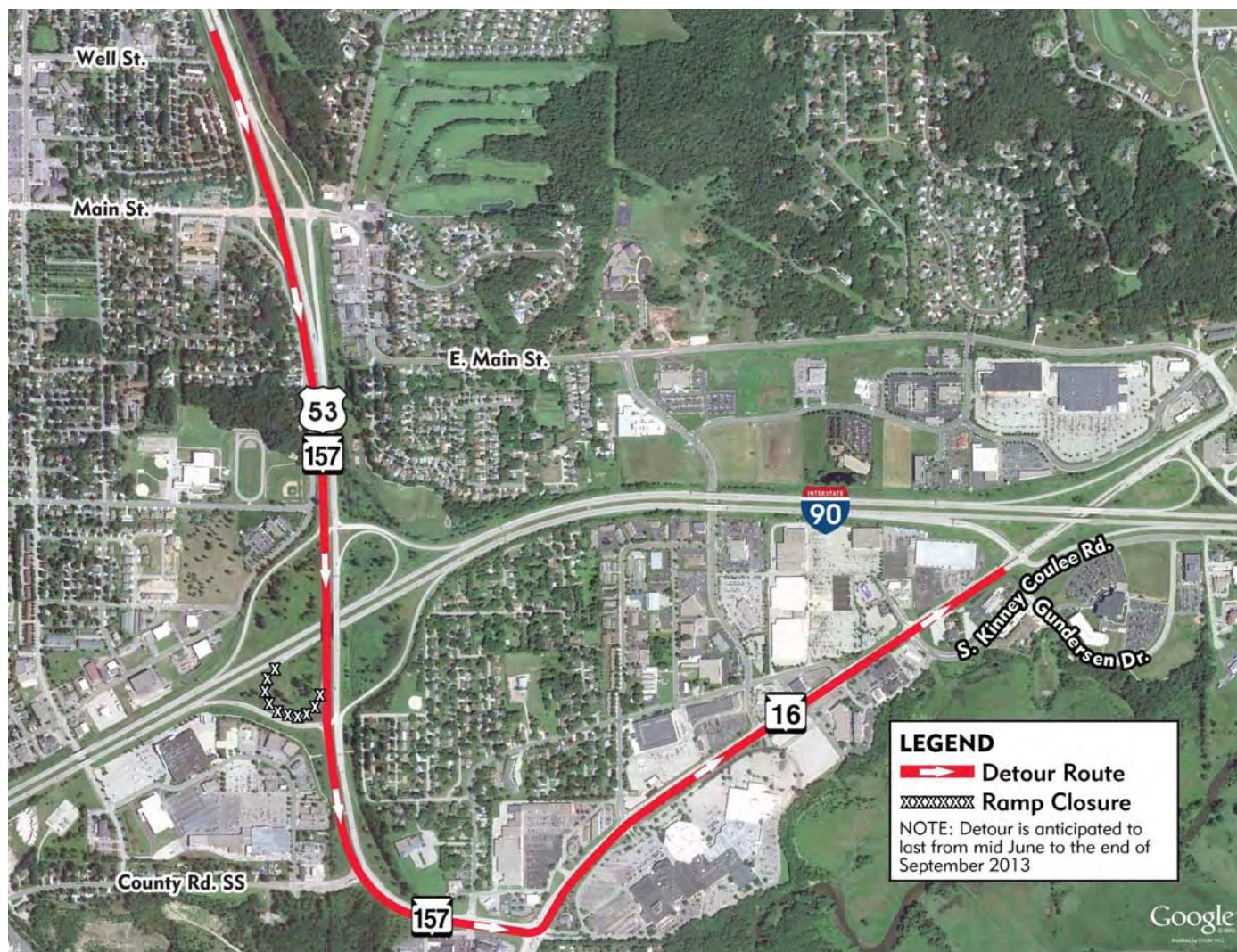
LEGEND

- Sidewalk
- Shared use path
- Great River State Bike Trail

Note: No grade separated crossings are proposed along Rose St. and on-street bike accommodations will be provided along Rose St. from Livingston St. to Elm St.

PRELIMINARY September 2012

Detour Plan – Southbound WIS 157 to Eastbound I-90



PRELIMINARY
September 2012



La Crosse County, WI

I-90 Reconstruction Project

Detour Plan – Northbound WIS 157 to Westbound I-90



PRELIMINARY
September 2012

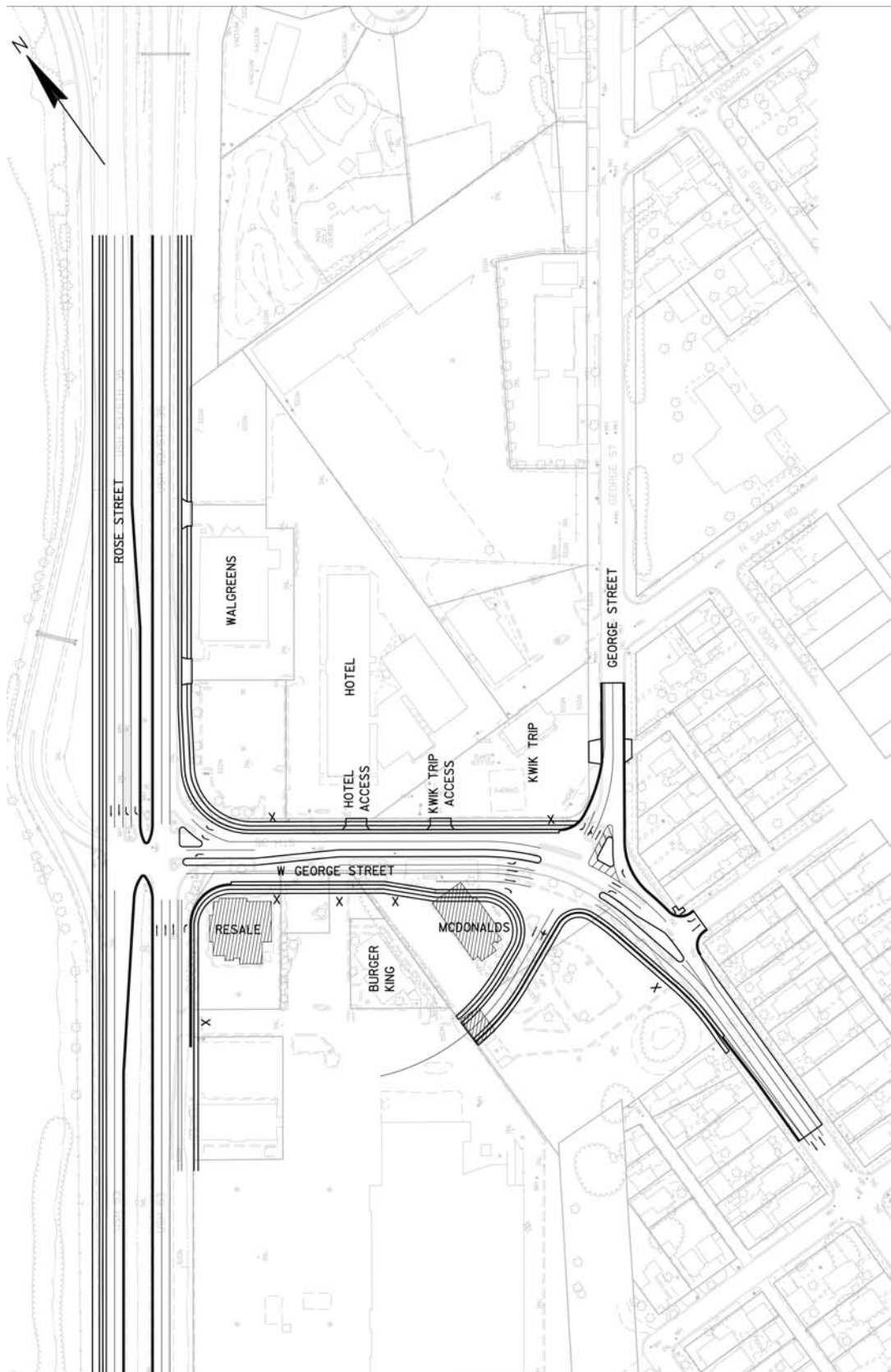
La Crosse County, WI

I-90 Reconstruction Project



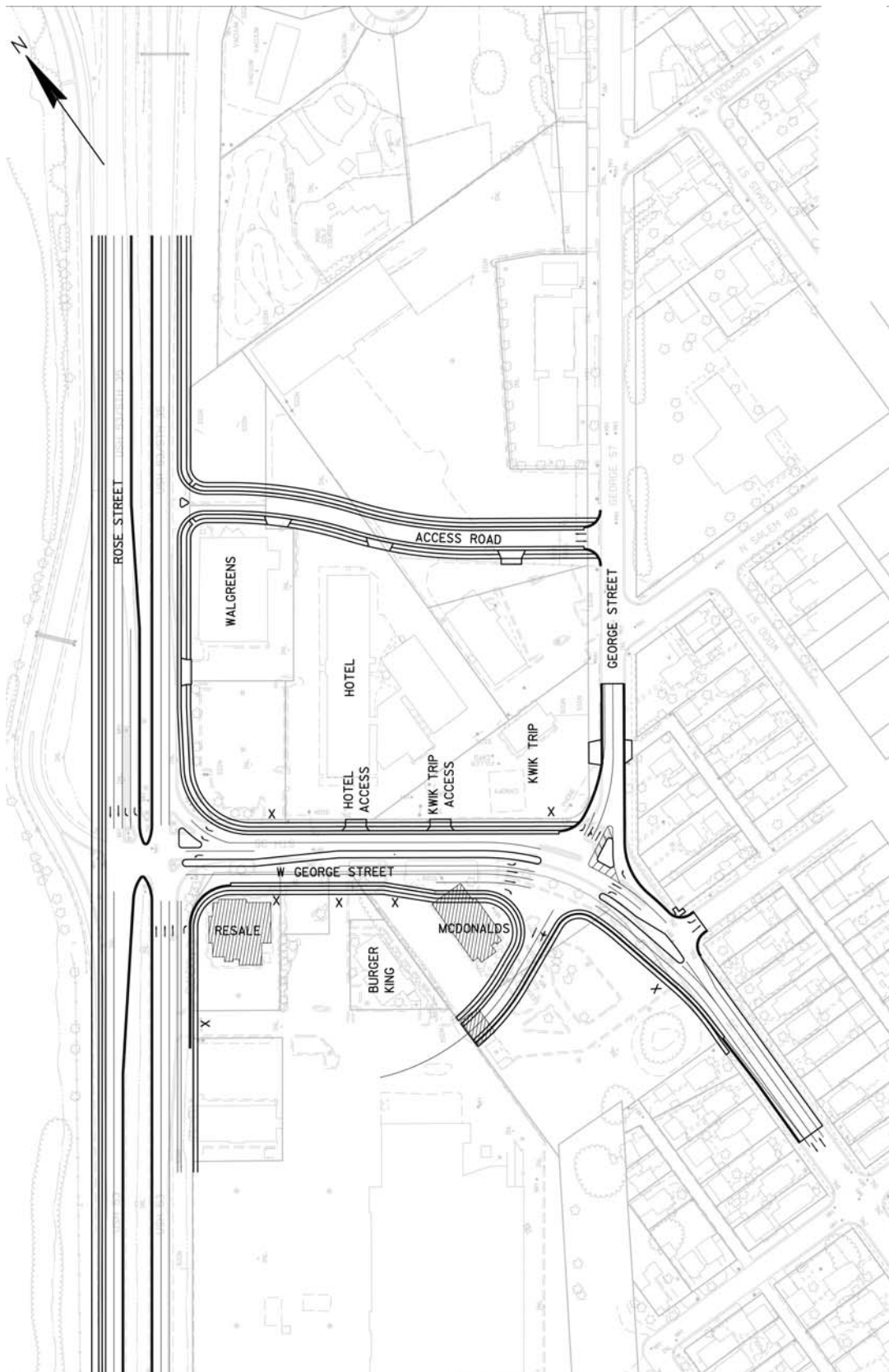
Preliminary West George Street Concepts

Alternative 1 – September 2012



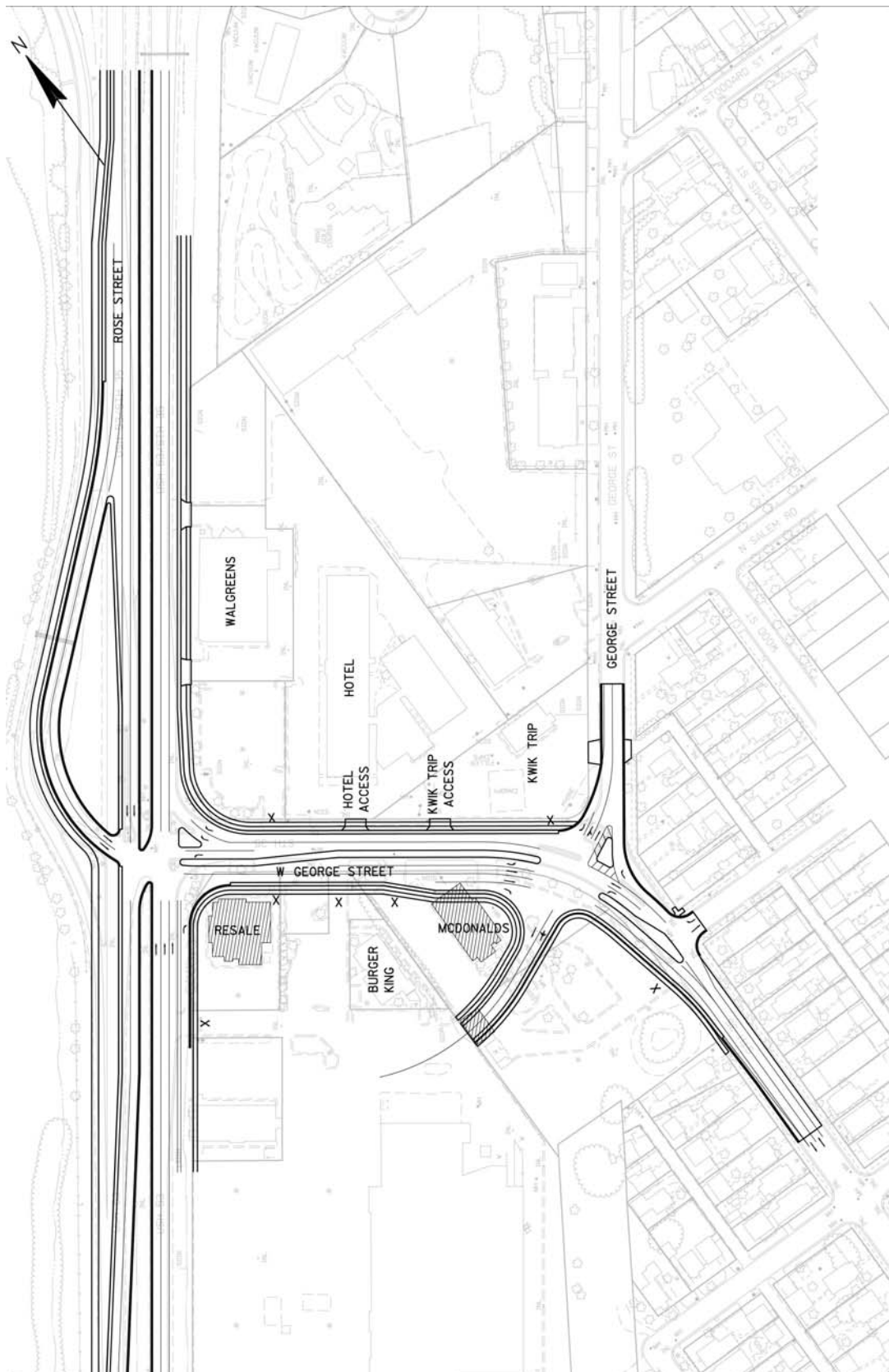
Preliminary West George Street Concepts

Alternative 2 – September 2012



Preliminary West George Street Concepts

Alternative 3 – September 2012



Preliminary West George Street Concepts

Alternative 4 – September 2012

