



I-90/US 53/WIS 35

Public Involvement Meeting Meeting #4

March 24, 2015

AYRES
ASSOCIATES

Welcome and Introductions

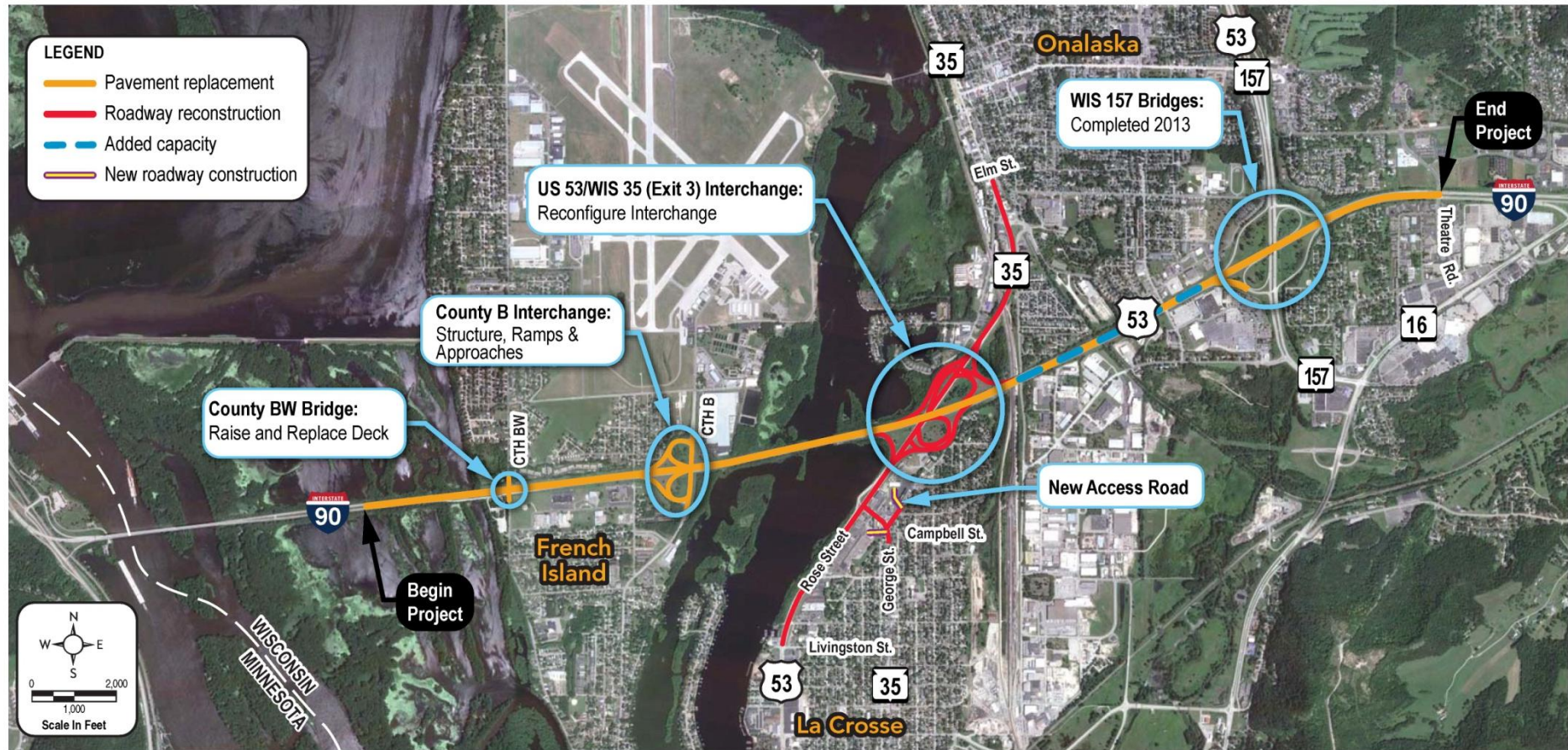
- ▶ Anthony VanderWielen, WisDOT Project Manager
- ▶ Bruce Ommen– Ayres Associates



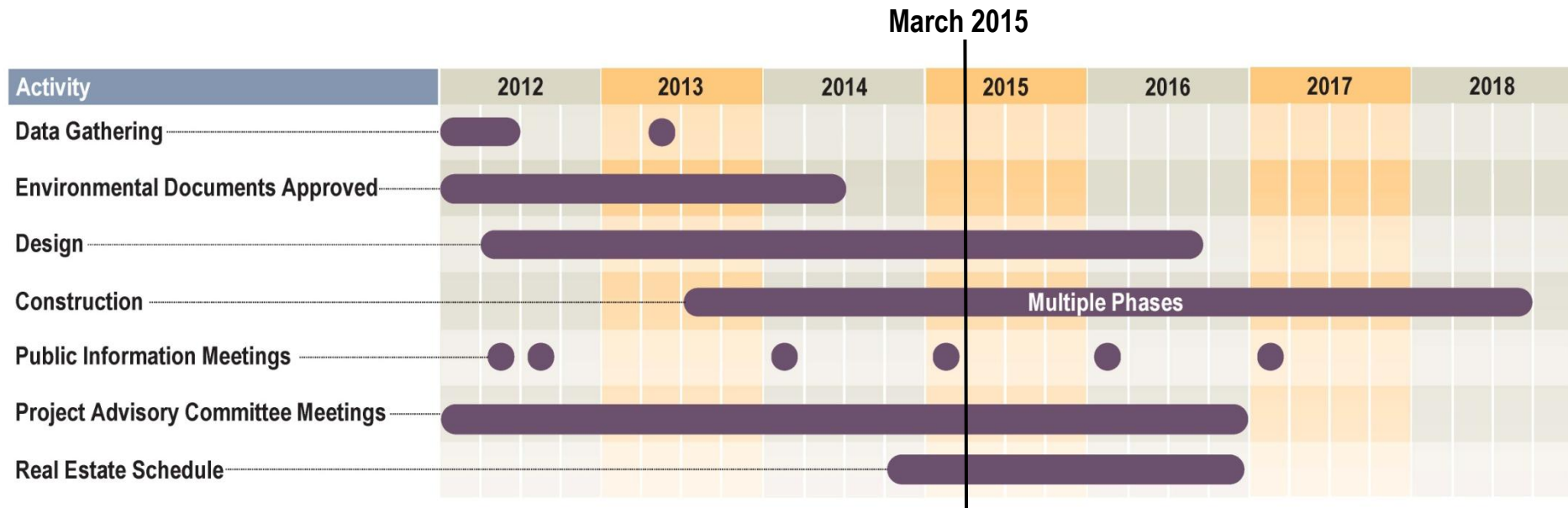
Agenda

- ▶ Project Update Presentation (30 minutes)
 - Project Overview
 - Design Schedule
 - Project Update
 - Construction Schedule
 - Aesthetics/Eagle Viewing Area
- ▶ Discussion (15 minutes)
- ▶ La Crosse Transportation Vision Charrette (10 minutes)
- ▶ Discussion

Project Overview



Project Schedule



Schedule Overview

- ▶ Environmental document – Completed
- ▶ WIS 157, 12th Street, State Bike Trail – Completed
- ▶ Westbound I-90 Segment – Construction April 2015
- ▶ Eastbound I-90 Segment Plans– August 2015
 - EB I-90 lanes
 - Rose St north of the railroad bridge
 - County B Interchange
 - Potential W. George St access road
- ▶ Rose/W. George St Segment Plans – August 2016
 - Rose Street – Livingston St to railroad bridge
 - W. George St/George St
 - Eagle Viewing Area
- ▶ Right-of-Way Plans – Completed Spring 2015
- ▶ Real Estate Acquisition – Currently underway
 - ▶ Anticipated Completion – August 2016



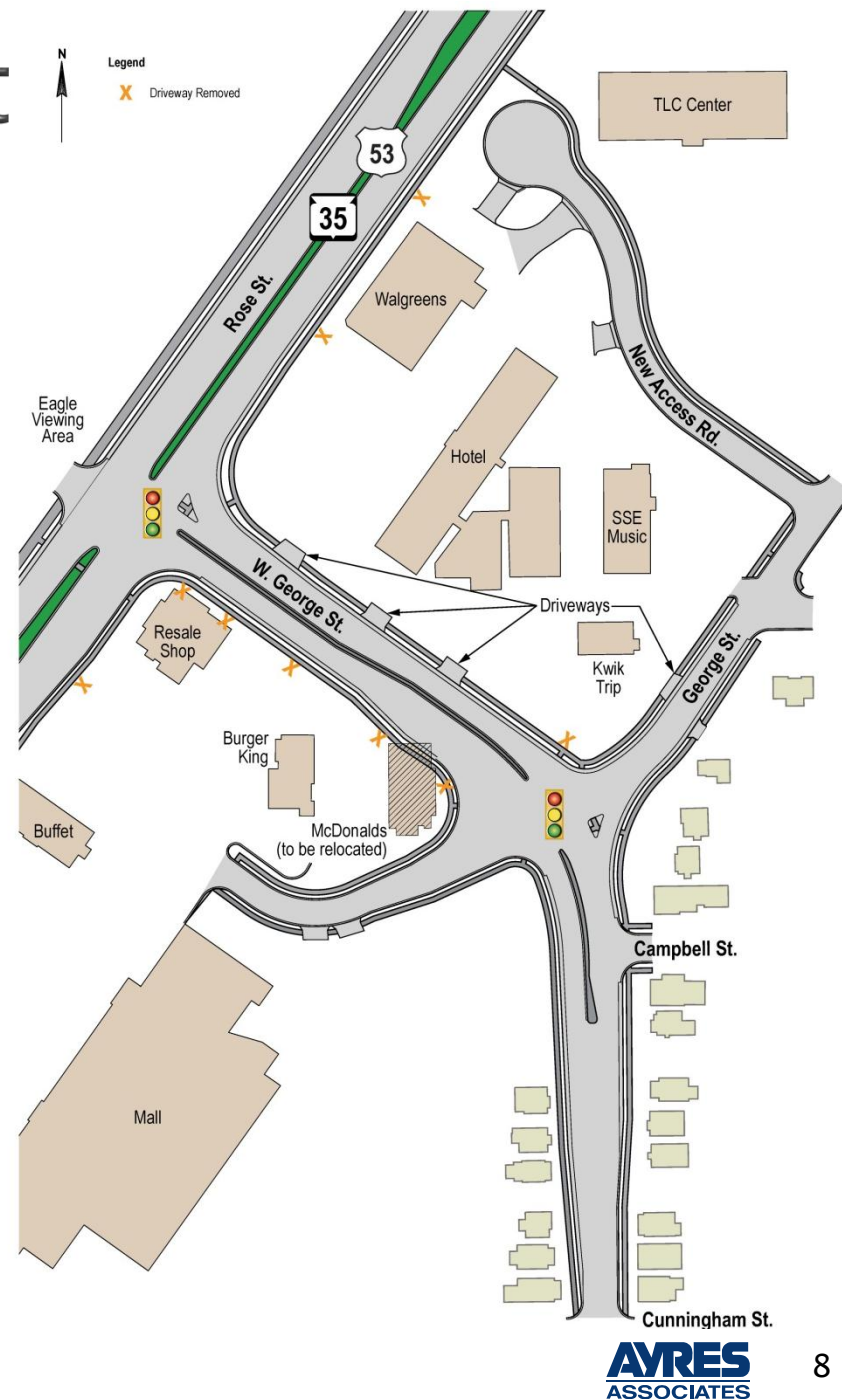
Project Update

I-90/US 53/WIS 35

AYRES
ASSOCIATES

West George Street

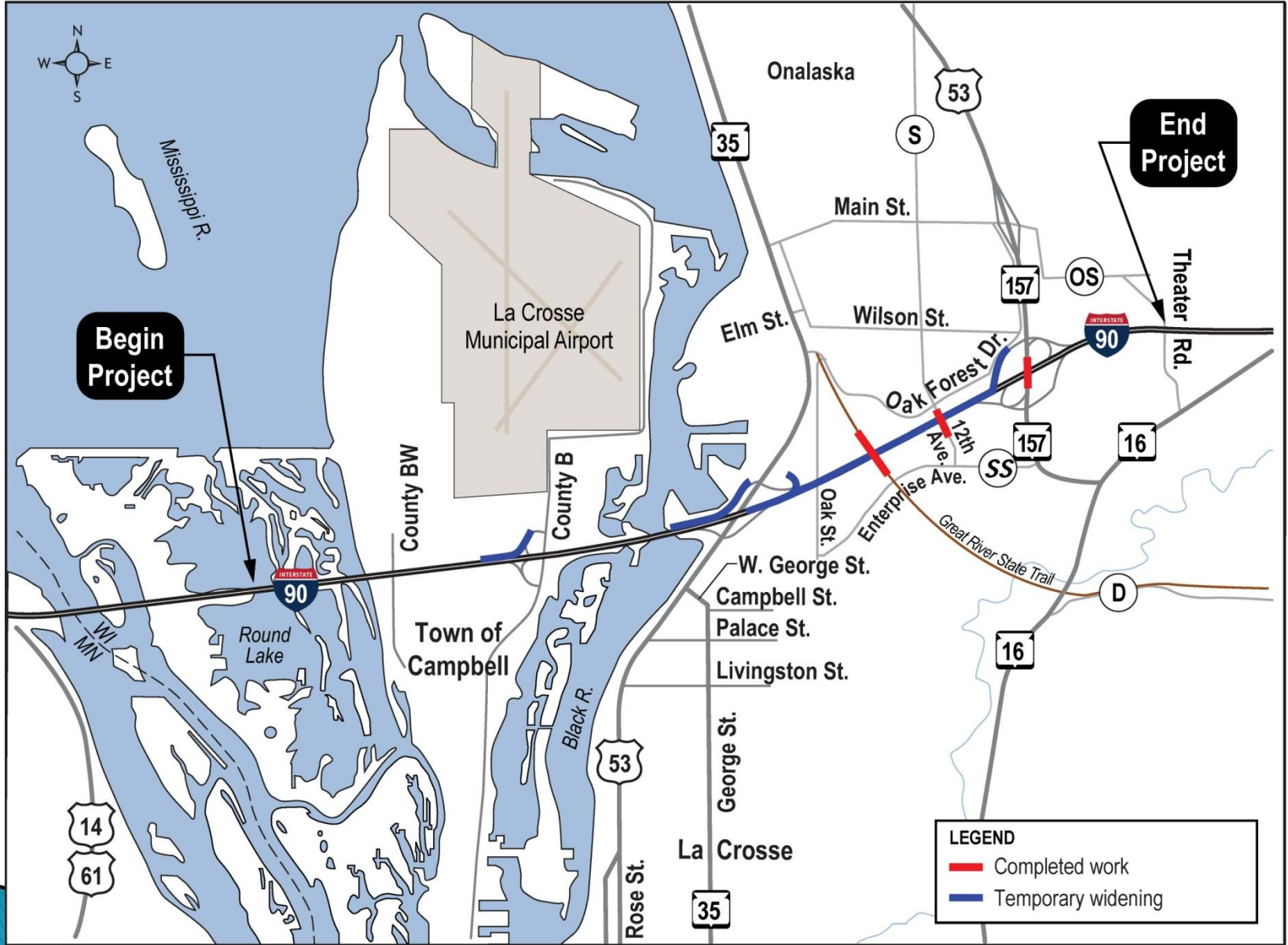
- ▶ Signalized George St intersection
- ▶ Turn Lanes at George St
- ▶ Mall access road extended
- ▶ Access concerns



Property Owner Discussions

- ▶ Walgreens, America's Best Value, Reinhart Co concerning access and access road
 - Reasonable Access Study ongoing
- ▶ KFC and marina to discuss access and impacts to properties
- ▶ McDonald's to discuss business relocation
- ▶ Burger King to discuss drive-thru layout
- ▶ Good Steward Resale Shop for access easement with the mall

Completed to Date



Great River State Trail Underpass





Construction Schedule

I-90/US 53/WIS 35

AYRES
ASSOCIATES

WB I-90 Segment- 2015 Construction



2015 Construction Work

► Westbound I-90

- Reconstruct pavement from State Line to Theatre Road
- Raise grade near Rose Street
- Add auxiliary lane between Rose Street and WIS 157
- Replace bridge over Rose Street
- Overlay bridges over French Slough, Oak St/railroad, 12th Ave, and Theater Rd
- Install overhead sign structures

► County BW

- Rehabilitate bridge over I-90 and approach roadway

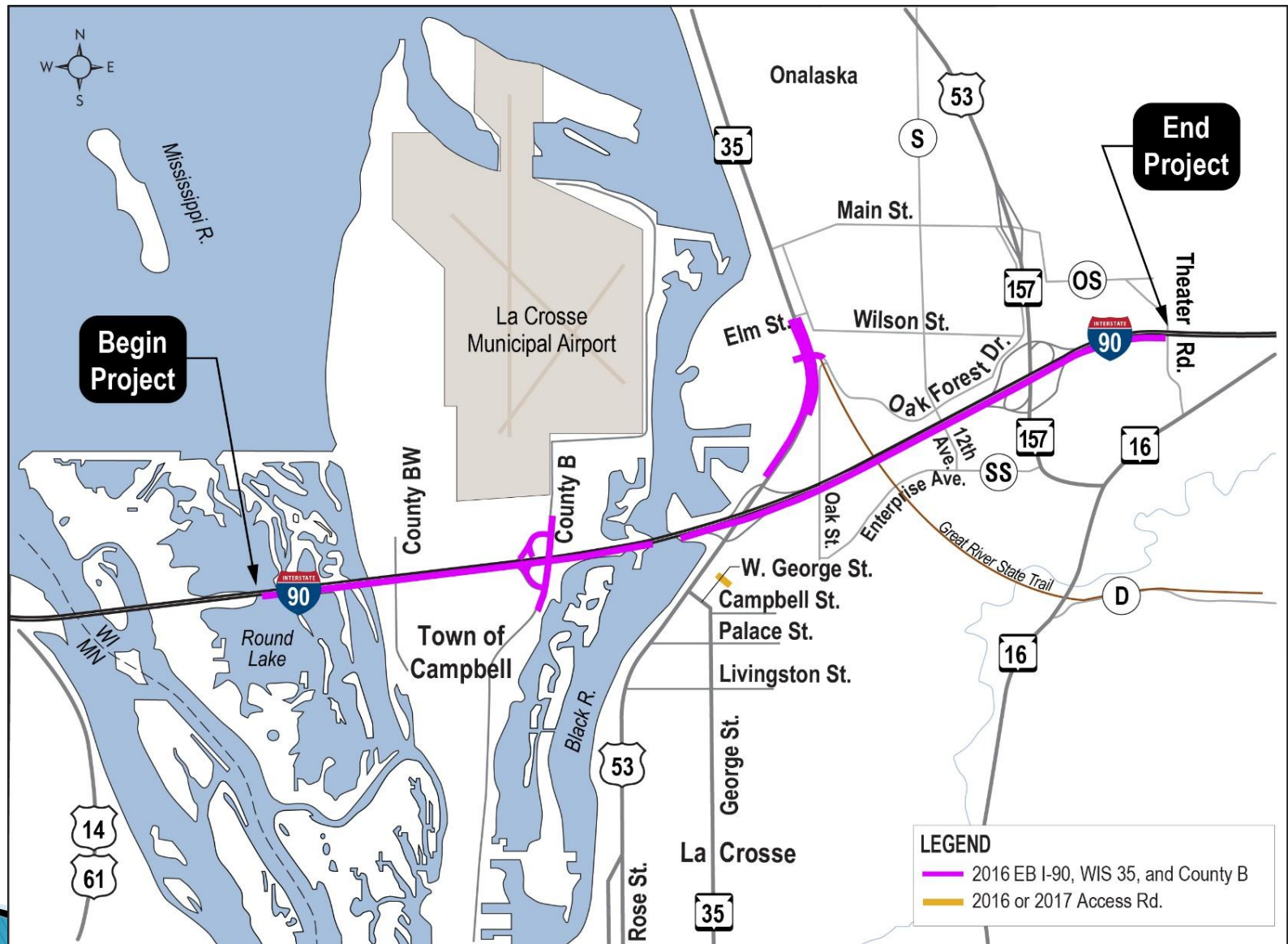
2015 Anticipated Traffic Impacts

- ▶ I-90 WB/EB reduced to one lane each direction from State Line to Rose St and under WIS 157 bridge throughout construction
- ▶ I-90 WB reduced to one lane from WIS 157 to WIS 16 for up to 21 Days
- ▶ Periodic 15 minute closures (rolling stops) on I-90 for constructing sign bridges
 - Monday through Thursday 12 AM to 4 AM
- ▶ County BW closed until October 1, 2015
 - Road Closed signs posted at Goddard St and Fanta Reed Rd

2015 Anticipated Traffic Impacts

- ▶ Potential off peak lane closures on Rose Street during I-90 bridge construction
- ▶ NB Rose St to WB I-90 ramp closed and detoured for up to 21 days
 - See detours on boards
- ▶ WIS157 NB to I-90 WB and WIS 157 SB to I-90 EB loop ramps closed and detoured for the majority of the construction season
 - See detours on boards
- ▶ Rest Area closed March 30, 2015 and does not re-open until fall 2016 when rest area remodeling is completed

EB I-90 Segment - 2016 Construction



2016 Construction Work

- ▶ Eastbound I-90
 - Reconstruct pavement from State Line to Theatre Road
 - Raise grade near Rose Street
 - Add auxiliary lane between Rose Street and WIS 157
 - Replace bridge over Rose Street
 - Overlay bridges over French Slough, 12th Ave, and Theater Road
 - Minor structure repair work to bridge over Oak St/railroad
- ▶ County B
 - Reconstruct ramps
 - Rehabilitate bridge over I-90 and approach roadway
- ▶ Rose Street
 - Reconstruct from railroad bridge to Elm Street
 - Replace SB bridge over railroad
- ▶ W. George Street access road
 - City including water main improvements



Rose/George Street Segment– 2017/18 Construction



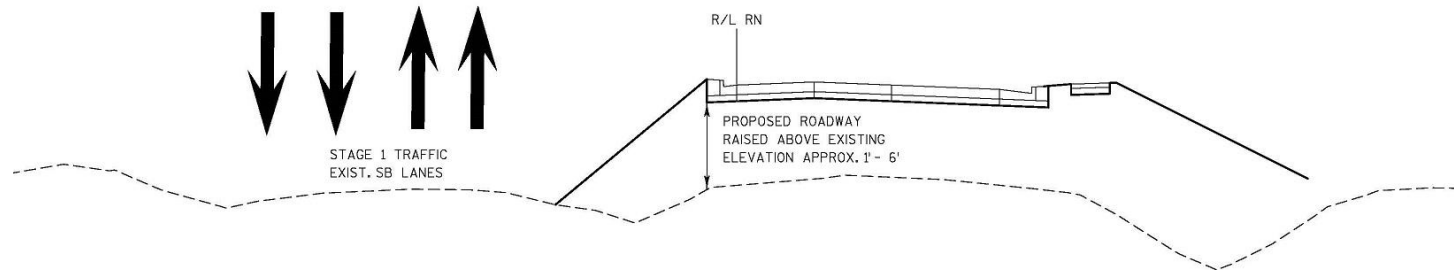
2017/18 Construction Work

► I-90

- Construct new ramps at Rose Street

► Rose St

- Reconstruct from Livingston St to railroad bridge
- Rehabilitate NB bridge over railroad
- Rose St raised above 100 year flood elevation
 - Typically 1' – 2' higher
 - Up to 6' higher near interchange



2017/18 Construction Work

► West George Street

- Reconstruct from Rose St to Cunningham St
- Reconstruct George St from West George St to new access road
- Construct new access to mall
- Install signal at George St/Mall Access intersection



Aesthetic Enhancements

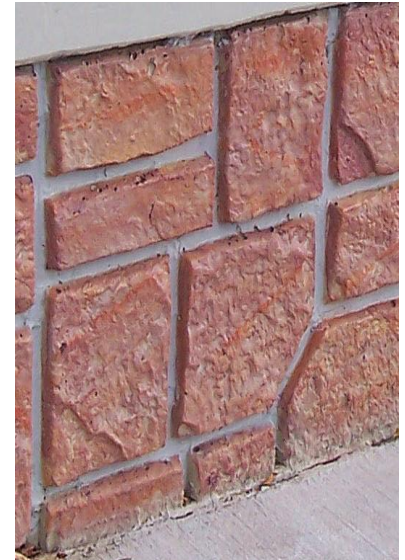


Aesthetic Enhancements – Bridges

- ▶ I-90 over Rose St and County B over I-90
 - formed and stained rock feature on parapets
- ▶ STH 35 Railroad bridges
 - formed and stained rock feature on areas viewed by trail users
 - ornamental screening
- ▶ County BW bridge
 - formed and stained rock feature on parapets
 - ornamental screening

Aesthetic Enhancements

Formed and
Stained Rock
Feature



Ornamental
Screening



Aesthetic Enhancements – Rose Street

- ▶ Decorative street lighting
 - Similar to existing decorative lighting to north and south except near interchange
 - Standard signal and light poles painted black near interchange
- ▶ Multi-use path along Rose Street
 - Decorative railing along path at marina
- ▶ Colored pavement at crosswalks
- ▶ Landscaping – amount and extent to be determined

Eagle Viewing Area

I-90/US 53/WIS 35

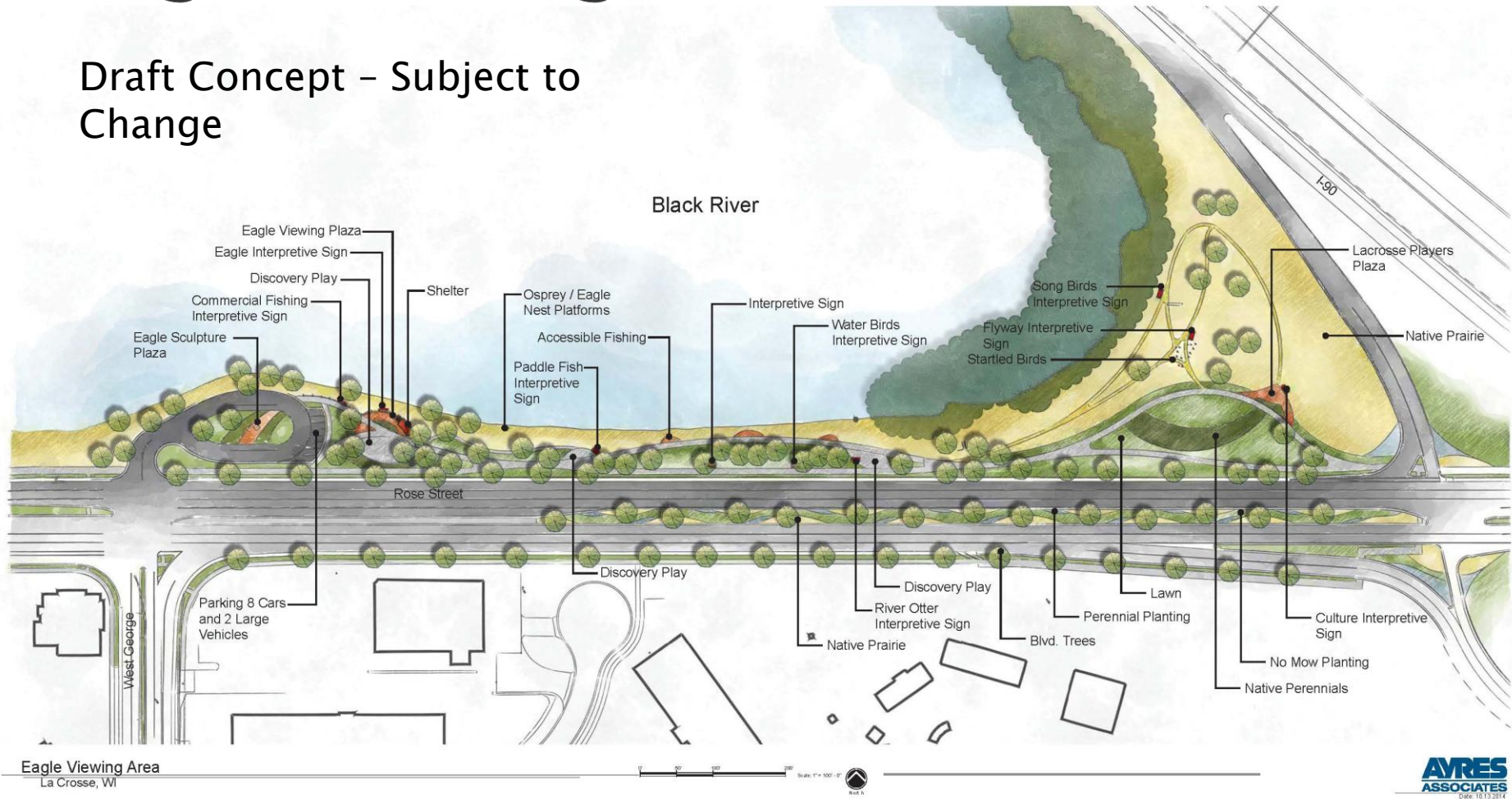
AYRES
ASSOCIATES

Eagle Viewing Area

- ▶ Proposed by the City of La Crosse
- ▶ Draft Concept – still under development
 - Potentially constructed in phases
 - Reduce trees to improve visibility
 - Modify parking layout
- ▶ Parking area and paved trail may be constructed with Rose Street in 2017/18

Eagle Viewing Area

Draft Concept – Subject to Change



AVRES
ASSOCIATES
Date: 10.13.2014



Discussion



La Crosse Transportation Vision Charrette

I-90/US 53/WIS 35



What is the Vision Charrette?



Vision Charrette

► Our Basic Understanding

- Reconnect to the river
- Restore street network
- Enhance downtown areas – north and south
- Reduce speeding
- Increase walkability
- Transform streets through marsh to be more park-like
- Reduce trip lengths and vehicle-miles traveled
- Make City arterial's complete and hospitable

Do we still have time to make changes to Exit 3/Rose St Design?

- ▶ Construction began last year on temporary widening
- ▶ Construction of I-90 WB lanes and the new bridge over Rose Street set to begin April 2015
- ▶ Real estate acquisition process has begun
- ▶ Delays are not practical at this time

Does project meet these ideas?

► Reconnect to the river

- Multi-use path along river where none existed
- Closes a gap in a riverfront path from La Crosse to Onalaska
- Excess right-of-way for Eagle Viewing area
- Crosswalks provided along corridor
- Accommodates multi-use path connection from north end George St to river
- Roadway shifted as far east as possible with no right-of-way impacts

► Restore street network

- Campbell Street reduced to right-in/right-out (adverse)
- Signals provide improved gaps for access at non-signalized locations

Does project meet these ideas?

- ▶ Enhance downtown areas – north and south
 - No change
- ▶ Reduce speeding
 - Reduced speed limit north of Rose Street to 40 mph
 - Eliminated free-flow interchange
 - Diamond interchange configuration used to provide transition between freeway and urban arterial
 - Signals at ramps provide traffic calming opportunities

Does project meet these ideas?

► Increase walkability

- Multi-use path along river
- Provides connection between La Crosse and Onalaska
- Sidewalk along east side of Rose St south of I-90
- Future sidewalk accommodated along east side of Rose St north of I-90
- Crosswalk locations on Rose St provided with median refuge
- Sidewalks provided along W. George St., George St. and Access Road
- Reduces number of commercial accesses crossing sidewalks
- Traffic signals at W. George/George provides safer crossing

Does project meet these ideas?

- ▶ Transform streets through marsh to be more park-like
 - Median, terraces and areas outside sidewalk provide opportunities for park-like setting along the river
 - Eliminated ditches to provide landscape opportunities
- ▶ Reduce trip lengths and vehicle-miles traveled (VMT)
 - Minimal reduction in VMT with modified interchange

Does project meet these ideas?

► Make City arterial's complete and hospitable

- Separated facility for bicyclists' and pedestrians' comfort – Charrette idea on other corridors
- On-street bicycle accommodations for commuter bicyclists – not a Charrette idea, but fits Complete Streets ideas
- Transit – Bus stop location provided along W. George
- Opportunity to provide a park-like setting along the river – Charrette idea on other corridors
 - Terrace width
 - Median width
 - Eagle viewing area
 - Additional green space in each quadrant of interchange
 - Eliminated ditches



Discussion

