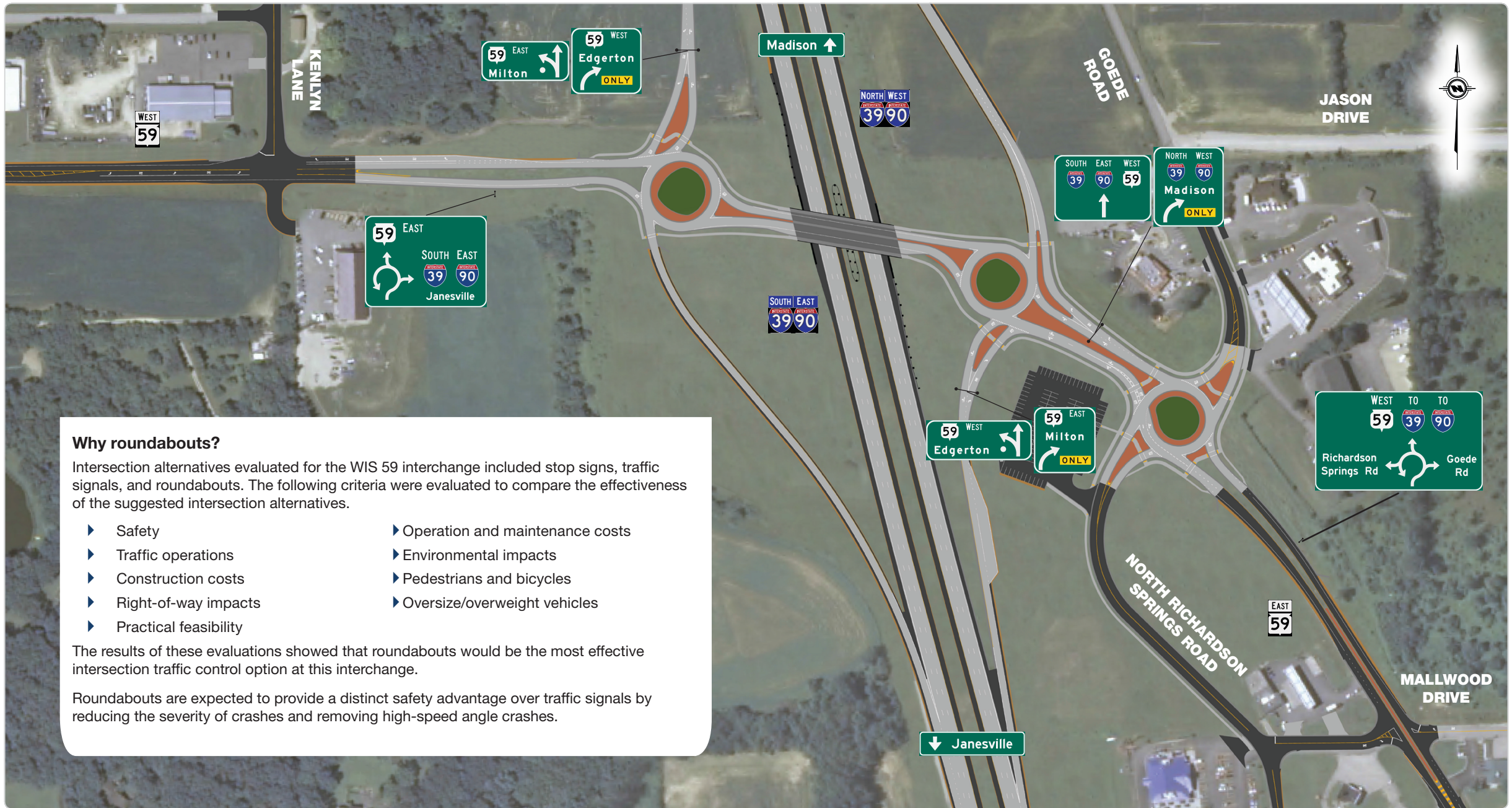


I-39/90 AND WIS 59 INTERCHANGE EDGERTON, WI

Always follow the **signs** and **pavement markings** to choose the appropriate lane.



Why roundabouts?

Intersection alternatives evaluated for the WIS 59 interchange included stop signs, traffic signals, and roundabouts. The following criteria were evaluated to compare the effectiveness of the suggested intersection alternatives.

- ▶ Safety
- ▶ Traffic operations
- ▶ Construction costs
- ▶ Right-of-way impacts
- ▶ Practical feasibility
- ▶ Operation and maintenance costs
- ▶ Environmental impacts
- ▶ Pedestrians and bicycles
- ▶ Oversize/overweight vehicles

The results of these evaluations showed that roundabouts would be the most effective intersection traffic control option at this interchange.

Roundabouts are expected to provide a distinct safety advantage over traffic signals by reducing the severity of crashes and removing high-speed angle crashes.

