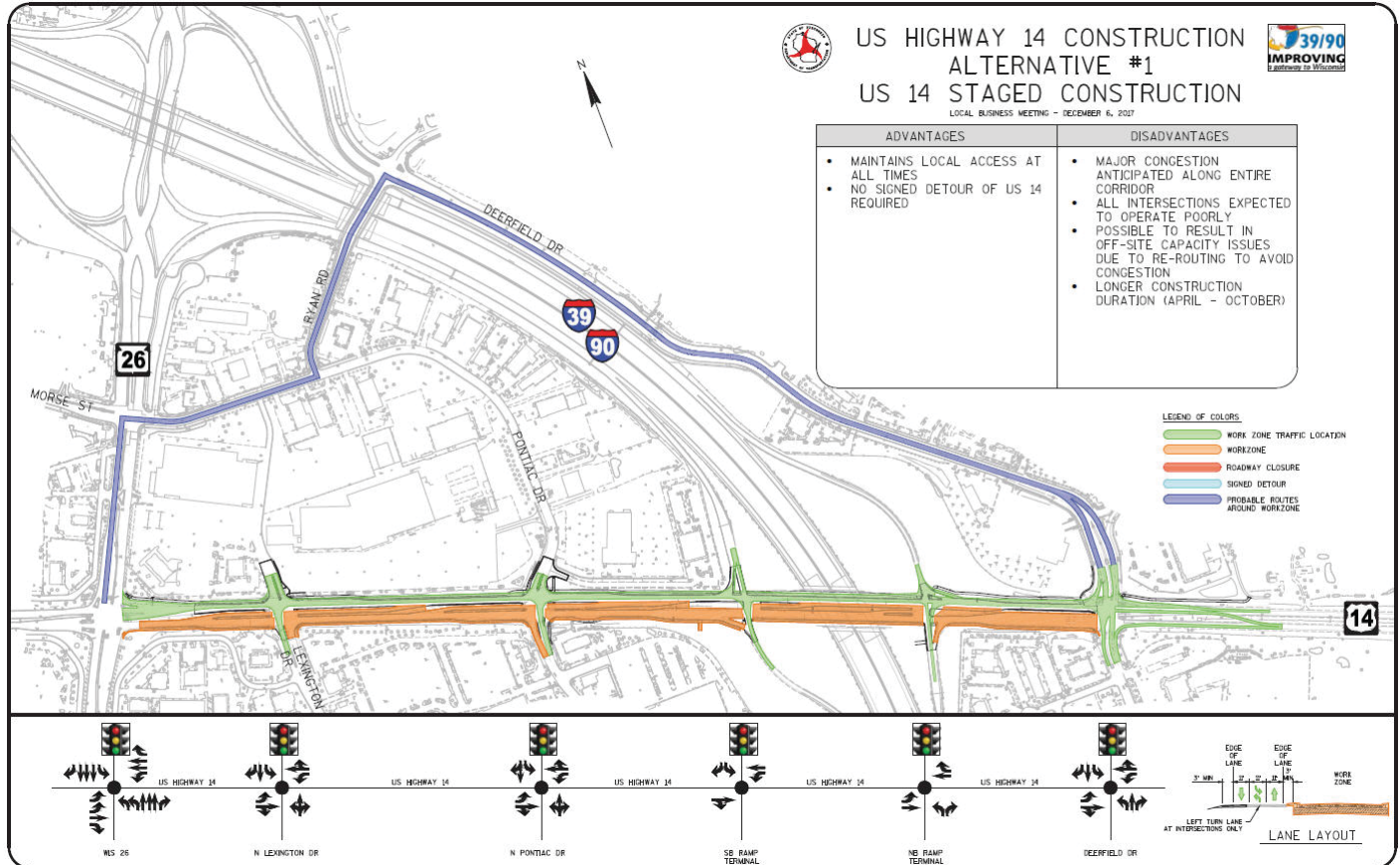


## US 14 Traffic Control Staging Alternatives

### Alternative #1 (US 14 Staging)



- One lane each direction on US 14
- Left turn lanes provided at intersections
- Signals operational at WIS 26, Lexington Drive, Pontiac Drive, I-39 NB & SB Ramps, Deerfield Drive
  - Lexington Drive and Pontiac Drive intersections each restricted to right-in/right-out without a traffic signal for portions of construction

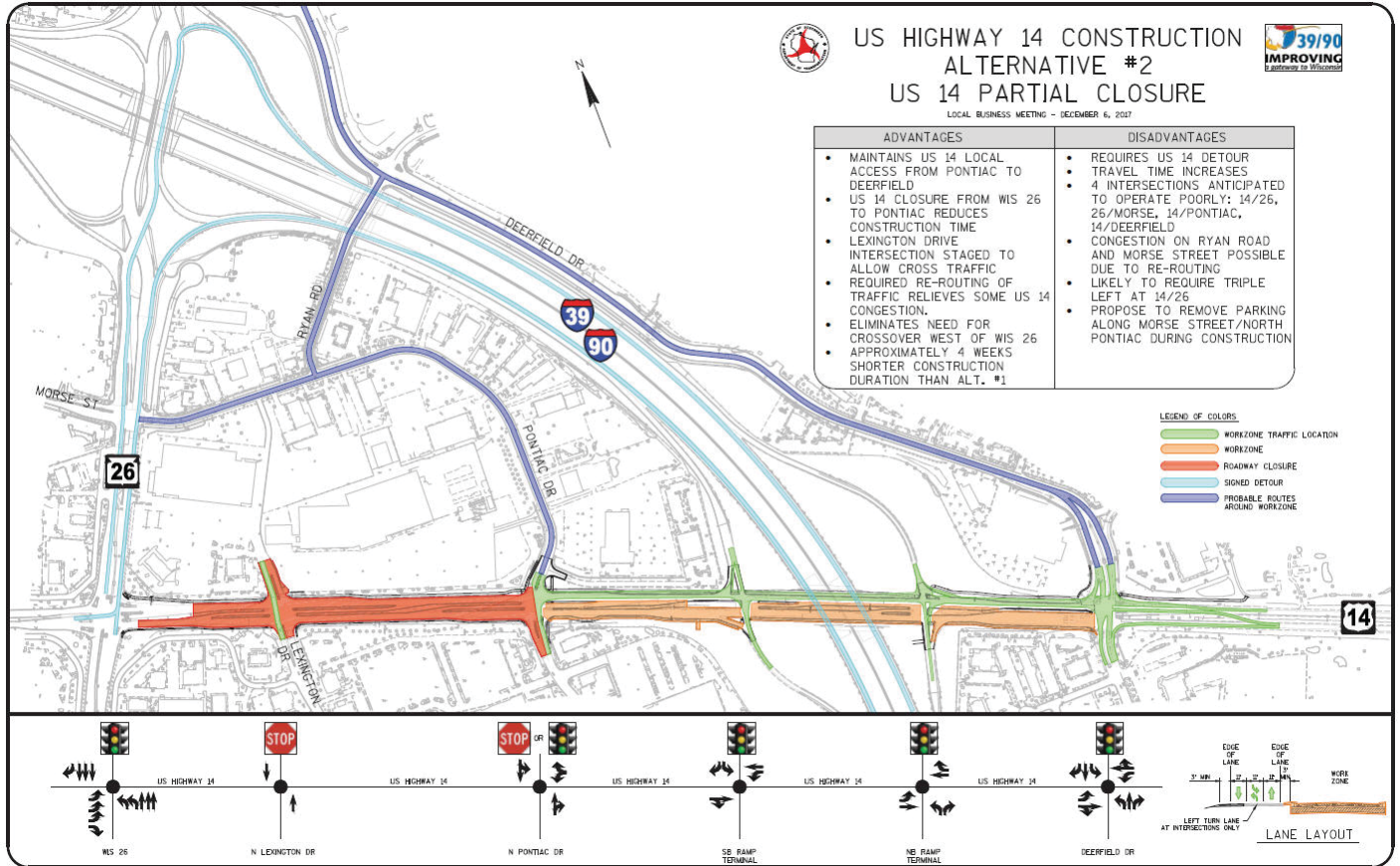
#### Advantages:

- Maintains local access at all times
- No signed detour of US 14 required

#### Disadvantages:

- Major congestion anticipated along entire corridor
- All intersections anticipated to operate poorly
- Possible to result in off-site capacity issues due to re-routing to avoid congestion
- Longer construction duration (April – October)

## Alternative #2 (US 14 Partial Closure)



- All US 14 lanes closed between WIS 26 and Pontiac Drive
  - US 14 intersections with WIS 26 and Pontiac Drive function as signalized T-intersections
- One lane each direction on US 14 between Pontiac Drive and Deerfield Drive
- Cross traffic allowed on Lexington Drive
- Signals operational at WIS 26, Pontiac Drive, I-39 NB & SB Ramps, Deerfield Drive
- Propose to remove parking along Morse Street/North Pontiac Drive
- Intersection control (stop or signals) may be required at the Morse Street/Ryan Road intersection

### Advantages:

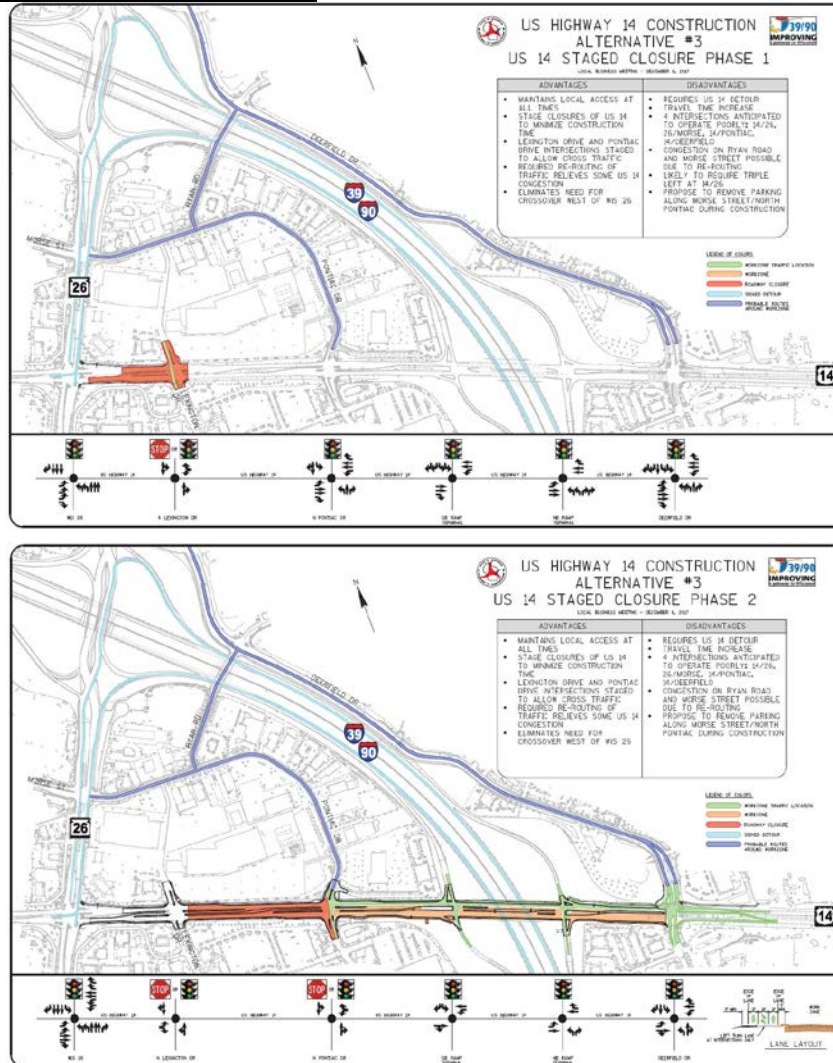
- Maintains US 14 local access from Pontiac to Deerfield
- US 14 closure from WIS 26 to Pontiac reduces construction time
- Lexington Drive intersection staged to allow cross traffic
- Required re-routing of traffic relieves some US 14 congestion
- Eliminates need for cross-over west of WIS 26
- Approximately 4 week shorter construction duration than Alt. 1

### Disadvantages:

- Requires US 14 detour
- Travel time increase
- 4 intersections anticipated to operate poorly: 14/26, 26/Morse, 14/Pontiac, 14/Deerfield
- Likely to require triple left at 14/26
- Congestion on Ryan Road and Morse Street possible due to re-routing



## Alternative #3 (US 14 Staged Closure)



- Closure and staged construction of US 14 completed in two separate phases:
  - Phase 1: All US 14 lanes closed between WIS 26 and Lexington Drive (approximately 4 week construction duration)
  - Phase 2: All US 14 lanes closed between Lexington Drive and Pontiac Drive
- Staged construction on US 14 between Pontiac Drive and Deerfield Drive
- Cross traffic allowed on Lexington Drive and Pontiac Drive
- Propose to remove parking along Morse Street/North Pontiac Drive
- Intersection control (stop or signals) may be required at the Morse Street and Ryan Road intersection

### Advantages:

- Maintains local access at all times
- Stage closures of US 14 to minimize construction time
- Lexington Drive and Pontiac Drive Intersections staged to allow cross traffic
- Required re-routing of traffic relieves some US 14 congestion
- Eliminates need for cross-over west of WIS 26

### Disadvantages:

- Requires US 14 detour
- Travel time increase
- 4 intersections anticipated to operate poorly: 14/26, 26/Morse, 14/Pontiac, 14/Deerfield
- Likely to require triple left at 14/26
- Congestion on Ryan Road and Morse Street possible due to re-routing
- Approximately same construction duration as Alt. 1





# Wisconsin Department of Transportation

111 Interstate Blvd., Edgerton WI 53534-9399 (608) 884-1234 FAX (608) 884-1220 [www.dot.wisconsin.gov](http://www.dot.wisconsin.gov)



## COMMENT SHEET

**Project I.D. 1005-10-01/5569-00-01**  
**I-39/90 Project Central Segment**  
**US 14 Business Involvement Meeting**  
**December 6, 2017**

From: (Please Print)

To:

Name: \_\_\_\_\_

Address: \_\_\_\_\_

\_\_\_\_\_ Zip: \_\_\_\_\_

Phone Number: \_\_\_\_\_

Email: \_\_\_\_\_

Derek Potter, P.E.  
WisDOT Project Manager  
Central Segment  
111 Interstate Blvd.  
Edgerton WI 53534-9399

### Please check your preferred staging alternative:

☐ Alternative #1 US 14 Staged Construction

☐ Alternative #2 US 14 Partial Closure

☐ Alternative #3 US 14 Staged Closure

### Please return this ballot with your vote using any of the following options:

1. Submit ballot at the public information meeting on December 6, 2017.
2. Submit ballot using this self-addressed postage paid form by December 20, 2017.

**The ballot is due to the Wisconsin Department of Transportation by December 20, 2017.**

Project Comments:

Fold down on this line first.



NO POSTAGE  
NECESSARY  
IF MAILED  
IN THE  
UNITED STATES

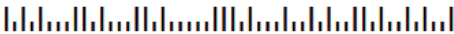
DOT1767 2005

**BUSINESS REPLY MAIL**

FIRST-CLASS MAIL PERMIT NO. 2226 MADISON, WI

POSTAGE WILL BE PAID BY ADDRESSEE

**ATTN: DEREK POTTER  
DTSD SOUTHWEST REGION  
WISCONSIN DEPARTMENT OF TRANSPORTATION  
111 INTERSTATE BLVD.  
EDGERTON WI 53534-9399**



Fold up on this line second.

Place a small piece of tape here to seal the letter.

