



SUMMER 2014

Contact the project team:

John Vesperman, P.E.
Project Chief
john.vesperman@dot.wi.gov

John Steiner, P.E.
Project Supervisor
john.steiner@dot.wi.gov

Wayne Chase, P.E.
Project Supervisor
wayne.chase@dot.wi.gov

Kim Schauder, P.E.
Project Supervisor
kimberly.schauder@dot.wi.gov

Jim Buschkopf, P.E.
Corridor Project Manager
james.buschkopf@dot.wi.gov

Emmanuel Yartey, P.E.
Construction Project Manager
emmanuel.yartey@dot.wi.gov


Craig Pringle, P.E.
North Segment Project Manager
craig.pringle@dot.wi.gov

Derek Potter, P.E.
Central Segment Project Manager
derek.potter@dot.wi.gov

Steve Marshall, P.E.
South Segment Project Manager
steve.marshall@dot.wi.gov

Connect with us!

 608.884.1234

 www.i39-90.wi.gov

 I39-90Project@dot.wi.gov

 [Facebook.com/WisconsinI3990Project](https://www.facebook.com/WisconsinI3990Project)



WIS 73 project to use recycled roof shingles

Starting in 2010, Wisconsin specifications have allowed the use of recycled roof shingles in Hot Mix Asphalt (HMA) mixes during full reconstruction projects. Since then, recycled shingles have been used in many projects around the state.

Previously, quantity amounts were limited due to processing techniques. New materials processing techniques have been developed, so this year, the Wisconsin Department of Transportation (WisDOT) and Wisconsin Asphalt Pavement Association (WAPA) began looking for potential pilot projects to use an even larger quantity of recycled materials in the pavement. The WIS 73 project qualified as one of the three HMA projects that will use more recycled materials.

Up to 25 percent of the binder (or asphalt cement) required by the mix design can be replaced by recycled roof shingle binder in these projects. Overall, up to 50 percent of the binder required by the mix design can be replaced by binder coming from recycled sources on approved projects.

In order to be used on the roadways, the roof shingles are ground to a fine consistency, and added to the mix at the end of the mixing process. The shingles have high quality roofing aggregates and fibers in them. The greatest benefit to using shingles



is it repurposes them, keeping the shingles out of landfills. Another benefit is a reduction in the use of virgin binder, which contains petroleum.

Asphalt binder costs anywhere from \$600 to \$800 per ton. Even though recycled roof shingles are only five percent by weight of each ton of mix, asphalt binder as a whole can be up to 50 percent of the cost per ton of mix. Using recycled binders from shingles can lead to significant cost savings.

In addition to this green effort, 5,000 tons of the existing WIS 73 roadway asphalt was removed and will be recycled to be used as a shoulder material on another Dane County project, providing additional savings.

WisDOT continues to research and use innovative tools and techniques to be Earth-friendly.

Orange barrels related to the Interstate expansion

Construction work continues on Wisconsin highways and areas related to the I-39/90 Expansion Project. Below is an update on the current projects.



WIS 73 reconstruction

WIS 73 reconstruction (I-39/90 north to US 12/18) in Dane County.

- WIS 73 is closed to through traffic until November 2014, but the highway remains open for local traffic and area businesses.
- Work is underway on WIS 73, from just north of County B to US 12/18 near Cambridge and Deerfield. The remainder of WIS 73 (County B south to I-39/90) will be under construction from August to November 2014.
- WIS 73 will be paved in fall 2014.
- Visit the WIS 73 project website, www.dot.wi.gov/projects/swregion/73, to learn more about the improvements.

Reconstruct the I-39/90 southbound bridge over Siggelkow Road, south of the US 12/18 interchange near Madison.

- Siggelkow Road is closed at I-39/90 until November 2014. Traffic on Siggelkow Road is not permitted to travel under I-39/90. Alternate routes are signed in the area.

- The median crossovers are complete with I-39/90 northbound traffic shifted toward the median.
- Interstate traffic heading southbound will remain in the current configuration until late August.
- Two lanes will remain open to traffic on I-39/90

(in each direction) during daytime hours.

Pavement repairs on I-39/90 from Milwaukee Street in Janesville to the WIS 73/US 51 interchange.

- Work includes pavement repairs, shoulder repairs and resurfacing sections of I-39/90.
- Nightly lane closures will occur on I-39/90 northbound and southbound.



Pavement repairs



Southbound bridge over Siggelkow Road

- Two lanes will remain open to traffic on I-39/90 (in each direction) during daytime hours.
- Short term ramp closures may occur. No consecutive ramps (i.e., US 14 and WIS 26 interchange) will be closed at the same time. Alternate routes will be marked during ramp closures.

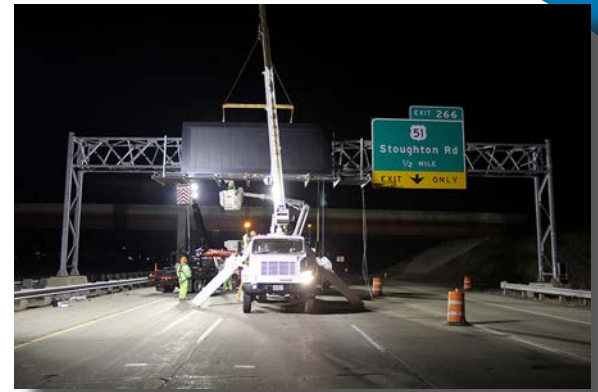
Stay up-to-date on activities by signing up for weekly construction updates on the project website under the "Sign Up for Updates" tab. You can also follow the project on Facebook, [Facebook.com/WisconsinI3990Project](https://www.facebook.com/WisconsinI3990Project).



Updates complete to provide real-time traveler information

WisDOT has completed the installation of additional traffic cameras and message boards along the 45-miles of I-39/90. These Intelligent Transportation System (ITS) features will alert motorists of potential traffic delays, and provide travel times and alternate routes on the message boards so motorists may reach their destination safely and efficiently.

In addition, before a planned trip, motorists can view the traffic cameras, message boards and travel times on Wisconsin's highways by visiting WisDOT's 511 website, www.511wi.gov. You can also view them on the project website, www.i39-90.wi.gov, under the Map tab or simply dial 511 for real-time travel information.



TrANS Program: WisDOT's affirmative investment in workforce development



service provider for the Southwest Region. The TrANS program is WisDOT's investment in promoting equity and access to the potential new workforce generated by our projects. WisDOT awarded the TrANS contract to Forward Service Corporation based on qualifications, compliance with proposal requirements and pricing.

As the TrANS provider for the I-39/90 Expansion Project, Forward Service Corporation has the responsibility of recruiting, training, placing and retaining community residents who've expressed an interest in highway construction careers located in the areas impacted by the project, primarily for those residing in Rock and Dane Counties. Forward Service Corporation is charged with sharing information about the road construction industry and the TrANS program with

WisDOT is happy to announce that Forward Service Corporation will be the Transportation Alliance for New Solutions (TrANS)

interested residents throughout WisDOT's Southwest Region.

This year, Forward Service Corporation will focus on interested candidates referred to them by WisDOT's stakeholder partners including Community Action of Beloit and Construction Workforce Diversity Alliance of Dane County. Together, they will identify and assess TrANS training recruits while referring ineligible candidates to appropriate community networks for support or assistance so they can become eligible. Next year, Forward Service Corporation will expand their outreach efforts.

During the next 12 months, Forward Service Corporation will conduct four TrANS classes held in Beloit and Madison. The minimum eligibility requirements include:

- Being 18 years of age and older;
- having a valid driver's license;
- being able to successfully pass a drug screening; and
- having math and reading competency levels above the 8th grade level.

The six-week, 160 hours of instruction includes traffic control and flagging procedures, 10 hours of OSHA Construction Safety training, CPR and First Aid, test preparation for a construction apprenticeship exam and the commercial driver's license (CDL) written exam.

The 2014 program goals are:

- Screening 150 candidates;
- training 100 candidates; and
- placing 65 candidates into road construction jobs and/or careers.

If you or someone you know has an interest in getting more information about WisDOT's Southwest Region TrANS Program, contact Brian Covey of Forward Service Corporation at (608) 268-2257.





Wisconsin Department
of Transportation
I-39/90 Project
111 Interstate Blvd.
Edgerton, WI 53534-9399



I-39/90 Expansion Project Newsletter

SUMMER 2014

Inside this issue:

Page 1:

- WIS 73 project to use recycled roof shingles

Page 2:


- Orange barrels related to the Interstate expansion

Page 3:

- Updates complete to provide real-time traveler information
- TrANS Program: WisDOT's affirmative investment in workforce development

Connect with us!

Stay up-to-date on the I-39/90 Expansion Project. From construction updates to meeting notices and handouts, you can connect with us to get information in whichever way is most convenient.

 608.884.1234

 www.i39-90.wi.gov

 I39-90Project@dot.wi.gov

 Facebook.com/WisconsinI3990Project

Sign up for email updates on the project website.

Get real-time travel conditions by calling 511 or visiting, www.511wi.gov.

