



Winter 2017



39/90

IMPROVING

a gateway to Wisconsin

Contact the project team:

John Vesperman, P.E.
Project Chief
john.vesperman@dot.wi.gov

Katrina Feltes, P.E.
Project Supervisor
katrina.feltes@dot.wi.gov

Kim Schauder, P.E.
Project Supervisor
kimberly.schauder@dot.wi.gov

Steven Theisen
Project Communications
Manager
steven.theisen@dot.wi.gov

Jim Buschkopf, P.E.
Corridor Project Manager
james.buschkopf@dot.wi.gov

Craig Pringle, P.E.
North Segment Project Manager
craig.pringle@dot.wi.gov

Derek Potter, P.E.
Central Segment Project
Manager
derek.potter@dot.wi.gov

Steve Marshall, P.E.
South Segment Project Manager
steve.marshall@dot.wi.gov

Emmanuel Yartey, P.E.
Construction Project Manager
emmanuel.yartey@dot.wi.gov

Jamie Grainger, P.E.
Construction Project Manager
jamie.grainger@dot.wi.gov

Bridge pier blasting makes way for next phase of project work

Replacement of the I-39/90 bridges crossing the Rock River is going well. Work began in spring 2016 and a portion of the bridge for the new northbound lanes is now being used.

The previous northbound bridge deck and piers were removed throughout fall and early winter and, on January 4, 2017, demolition experts used explosives to break up and remove the pier foundations under the water level.

Significant planning was completed prior to the blast to ensure motorists, work crews and the new bridge and existing I-39/90 southbound bridge were safe from the blast. Interstate traffic was slowed to 20 mph by State Patrol far in advance of the bridges near Edgerton and Newville.

Within six minutes of the blast being completed and the all clear was given, traffic resumed normal operations.

WisDOT Project Manager Emmanuel Yartey credited the success of the blast to the detailed planning and preparation of everyone involved.

For this year, crews will complete

the remaining section of the northbound bridge and portions of the Interstate on both sides of the river in preparation to shift southbound Interstate traffic over to the new bridge structure. Two lanes will remain open in each direction, besides periodic nighttime single lane closures between 8 p.m. and 5 a.m. Monday through Friday.

Once that shift is completed, crews will remove and replace the existing I-39/90 southbound bridge over the river later this fall and winter.

This project is expected to be completed in summer 2018. Stay informed on these construction activities and [register for project email updates](#).



Click the photo to watch the demolition video.

Connect with us!

Stay up-to-date on the I-39/90 Expansion Project. From construction updates to meeting notices and handouts, you can connect with us to get information in whichever way is most convenient.

☎ 608.884.1234

💻 www.i39-90.wi.gov



✉ I39-90Project@dot.wi.gov

📘 [Facebook.com/WisconsinI3990Project](https://www.facebook.com/WisconsinI3990Project)

Sign up for email updates on the project website.

Get real-time travel conditions by calling 511 or visiting, www.511wi.gov.

www.i39-90.wi.gov

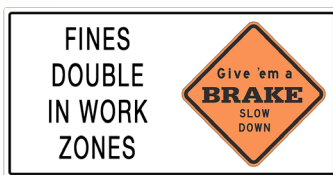
Know the signs: be safe in construction zones!

It's always important to pay attention to roadway signage, whether it's telling you where the next exit is or helping you find a hotel or restaurant in an unfamiliar area. It's especially critical that motorists watch for, and obey, signage alerting them to construction activities ahead. Your safety and the safety of others depend on it!

As we approach spring and the start of another construction season, you'll begin to see orange "road work ahead" and other construction signs on the Interstate and nearby highways. These signs provide important driver information to help you safely navigate through a work zone.

With construction planned on much of the 45 mile corridor of the I-39/90 Expansion Project this year, take time to review some of the more common work zone signs you will likely encounter:

- A "Road Work Ahead" sign means that drivers should pay extra attention as crews or construction vehicles and equipment may be working near the travel lanes.
- Failure to follow posted speed limits in construction zones could result in a speeding ticket with fines doubling in work zones.



- Lane shift ahead signs will become more prevalent along I-39/90 in 2017. When you see these signs, please slow down and stay in your lane.



- Advisory speed limit signs will be posted along this section of Interstate in advance of lane shifts. These signs alert motorists to upcoming roadway changes that recommend a safer, slower speed.



Crashes in construction zones happen far too frequently and can easily be avoided. Simply driving with caution and staying alert could save your life and the lives of others. When you notice these work zone signs, it's your responsibility to pay attention and avoid distractions while driving.

Whether it's for you, your passengers, or the workers along the highways, watch for work zone signs and obey the law. Let's work together to make 2017 a safe construction season!

**Stay alert,
stay safe!**

Safety plays an important role in the I-39/90 Expansion Project

Safety is always a priority for the Wisconsin Department of Transportation (WisDOT), whether it's for the motorists traveling our roadways or for the construction and maintenance crews working to improve the state's transportation system.

In 2016, the I-39/90 Expansion Project team implemented a Construction Safety Management System (CSMS) utilizing a core implementation team comprised of representatives from WisDOT, consultants, and construction contractors. The team worked to identify the top ten potential safety risks during the reconstruction and expansion of I-39/90, and created policies designed to specifically address each risk and then implemented safety training programs for everyone involved.

Some of the significant safety achievements for the I-39/90 project team in 2016 included:

- Creation of a two-hour construction safety awareness course for project leaders, project managers, inspectors

and contractor safety representatives who work on the I-39/90 Expansion Project.

- Design of a user-friendly, weather-resistant safety field guide distributed to project site workers and managers to serve as a handy, durable reference guide while working in the field.
- Development of new safety process guidelines providing additional detail and guidance for construction crews.
- Completion of 32 project safety site visits. These visits identified areas for safety improvements and recognized positive observations witnessed by safety inspection teams on the construction sites.

The motto for this effort is, "Safety is Everyone's Responsibility." It not only highlights the importance of safety for our team, but also for the motorists traveling near and through our work zones.

2017 construction activities are fast approaching

Last year was a busy year with 18 of 20 projects completed, the carryover work includes the replacement of the Interstate bridges over the Rock River and the Interstate expansion near Newville. These projects will continue throughout 2017 and are scheduled to be completed in summer 2018.

In addition to continued construction on the Rock River bridges and adjacent Interstate, nine other projects are planned for areas throughout the 45 miles of Interstate 39/90 from the Illinois state line to the US 12/18 interchange near Madison. Below is more information on the scope of projects planned for 2017:

- Bridges crossing over the Interstate at County AB (near Madison), Manogue Road (north of Janesville) and Stateline Road (south of Beloit) will be replaced and lengthened to accommodate the additional lanes on I-39/90.
- The County N interchange (Exit 147) will be reconfigured and, when completed, will feature three roundabouts to improve safety and traffic flow. Interstate expansion will also take place adjacent to the interchange. A public involvement meeting for this interchange is anticipated in April 2017. Meeting details will be shared on the [project website under the Schedule tab](#).
- The temporary widening projects include I-39/90 southbound between County AB and East Church Road, north of the US 51 interchange (Exit 156) in Dane County, and I-39/90 southbound from the County S (Shopiere Road) interchange (Exit 183) to the Illinois state line.

- Interstate reconstruction and expansion will occur on I-39/90 northbound from the Dane/Rock County line to East Church Road, and the northbound Interstate from Hart Road near Beloit to the I-39/90 and US 14 interchange (Exit 171B) in Janesville. This work will continue through fall 2019.

The annual segment open house meetings are being planned for March/April 2017. When the dates and locations are finalized, the information will be shared on the project website under the [Schedule](#) tab.

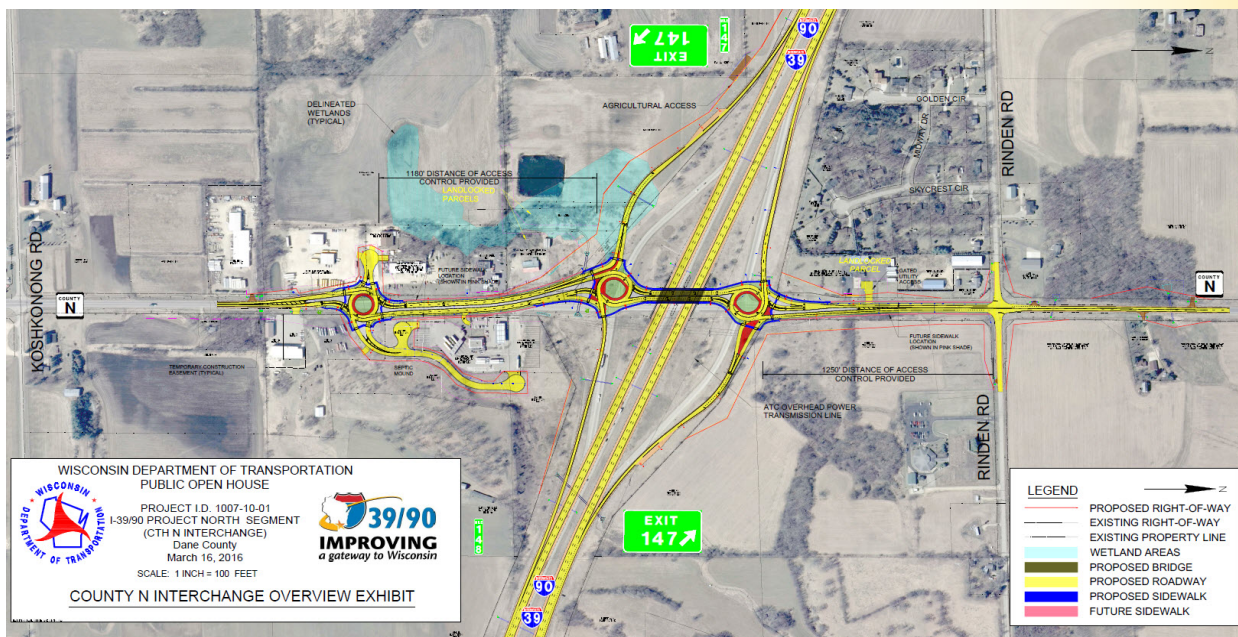
To help motorists navigate this corridor, the [2017 Construction Guide](#) is now complete and available on the project website. It will also be available in print this spring.

The Guide features maps highlighting this year's construction and identifies alternate routes used during and after the Interstate expansion for congestion and incident management. There are also useful tips for driving in work zones, as well as an overview of the entire project.

While reviewing the Guide on the project website, be sure and [register for I-39/90 project email updates](#). These email updates notify subscribers of work planned for the week ahead and, what if any, lanes of traffic or interchange ramps may be temporarily closed. You can also follow the project on [Facebook](#). It's a great way to stay informed!

For real-time travel conditions, call 511 or visit www.511wi.gov to see the latest travel times, traffic cameras and more on Wisconsin highways.

The graphic to the right shows the planned configuration of the I-39/90 and County N interchange. Watch the [animation video of the planned interchange](#).





U.S. Department
of Transportation
**Federal Highway
Administration**

**Wisconsin Department
of Transportation**

I-39/90 Project
111 Interstate Blvd.
Edgerton, WI 53534-9399



I-39/90 Expansion Project Newsletter

WINTER 2017

Jersild was strong advocate for I-39/90 DBE and TrANS Programs



Sue Jersild, of Rock Road Companies, Inc. and also a member of the Rock County Stakeholders Advisory Committee, passed away last year. She was a strong supporter of the Transportation Alliance for New Solutions (TrANS), apprenticeship and Disadvantage Business Enterprise (DBE) programs.

Known for commitment to excellence, she was a key member of the planning efforts for the WisDOT Trucking Payroll Training event held in 2014 and, along with her coworkers at Rock Road Companies, received the 2015 Secretary's Golden Shovel Award. She was posthumously honored as a Hall of Fame Inductee at the 2017 award event.

She was also an integral part of the Rock Road team and firmly believed in developing new talent for the construction industry. Jersild took great joy in seeing new employees graduate from the programs and move into a career in construction. She was also known for her selfless attitude and a strong work ethic and for celebrating the achievements of others.

Julie Harkinson, Labor Compliance Specialist for the WisDOT Southwest Mega Projects Team, highlighted Jersild's commitment to training and new employee development. "I believe the satisfaction on the faces of successful new employees and graduates of the programs motivated Sue to work even harder," Harkinson said. "She believed everyone could benefit from learning about the construction industry and how their talents and skill sets could translate into a long-term construction career."

Jersild is survived by her husband Jim and her children and grandchildren. In her free time, she was also a Master Gardener and loved to bake and decorate cakes.