

# I-39/90 Expansion Project



**Public meeting for I-39/90 expansion  
between Beloit and Janesville**

*August 22, 2017*

# Overview

- Interstate and segment overview
- I-39/90 expansion between Beloit and Janesville
  - Construction staging
  - Noise barriers: schedule/location
- US 14 and WIS 26 interchange overview
- How to stay informed and involved





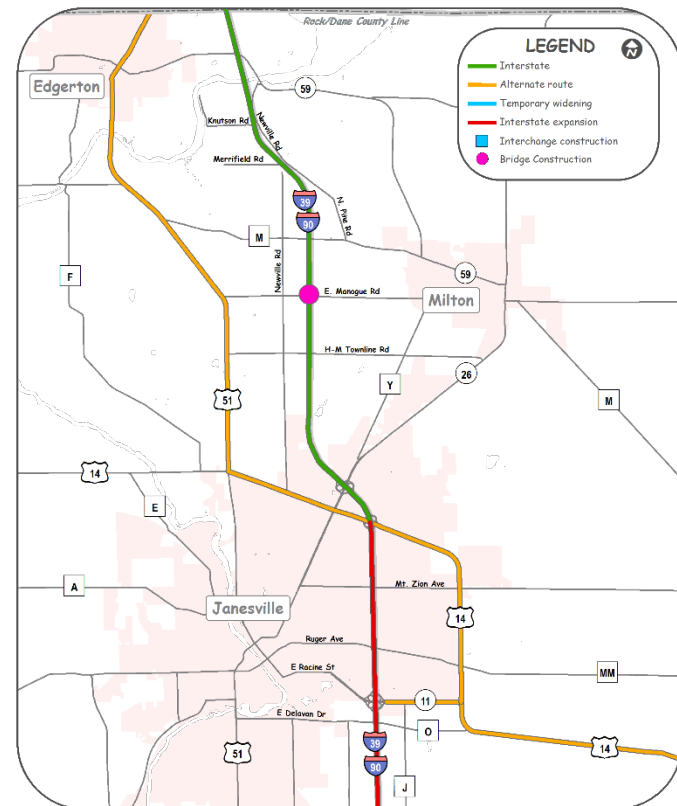
# Interstate improvements

- Reconstruct and expand 45 miles of I-39/90 from four to six lanes.
- Reconfigure 11 interchanges.
- Replace nearly 100 bridges.
- Expand from four to eight lanes from WIS 11 (Avalon Rd.) to the WIS 26 interchange in Janesville.



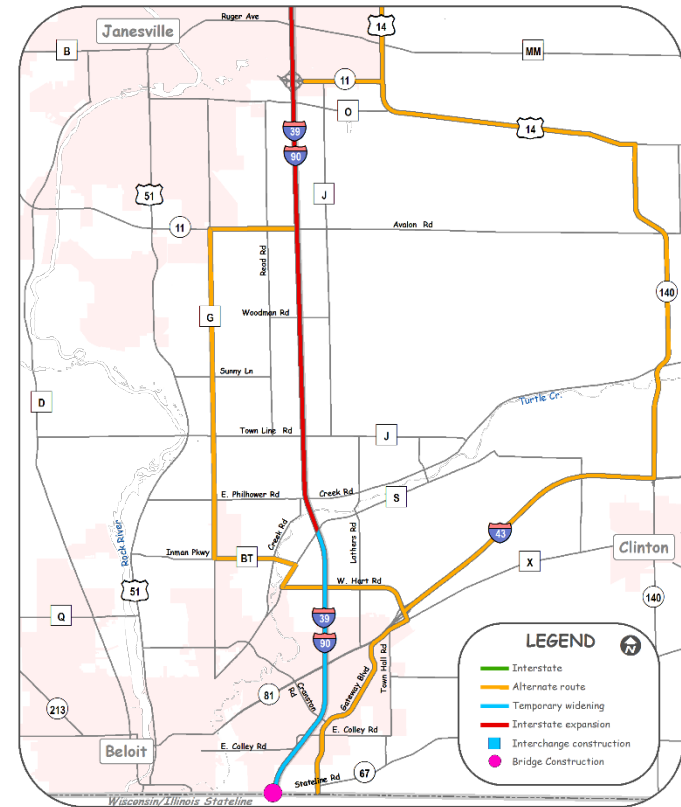
# Central Segment improvements

- Eight lanes County O to WIS 26
- Six lanes WIS 26 to Dane/Rock Co. Line
- Collector/Distributor lanes at US 14 and WIS 26 interchanges
- Bridges reconstructed
- Bicycle and pedestrian accommodations
- US 14/US 51 alternate route
- Noise barriers
- Construction 2015 through 2022

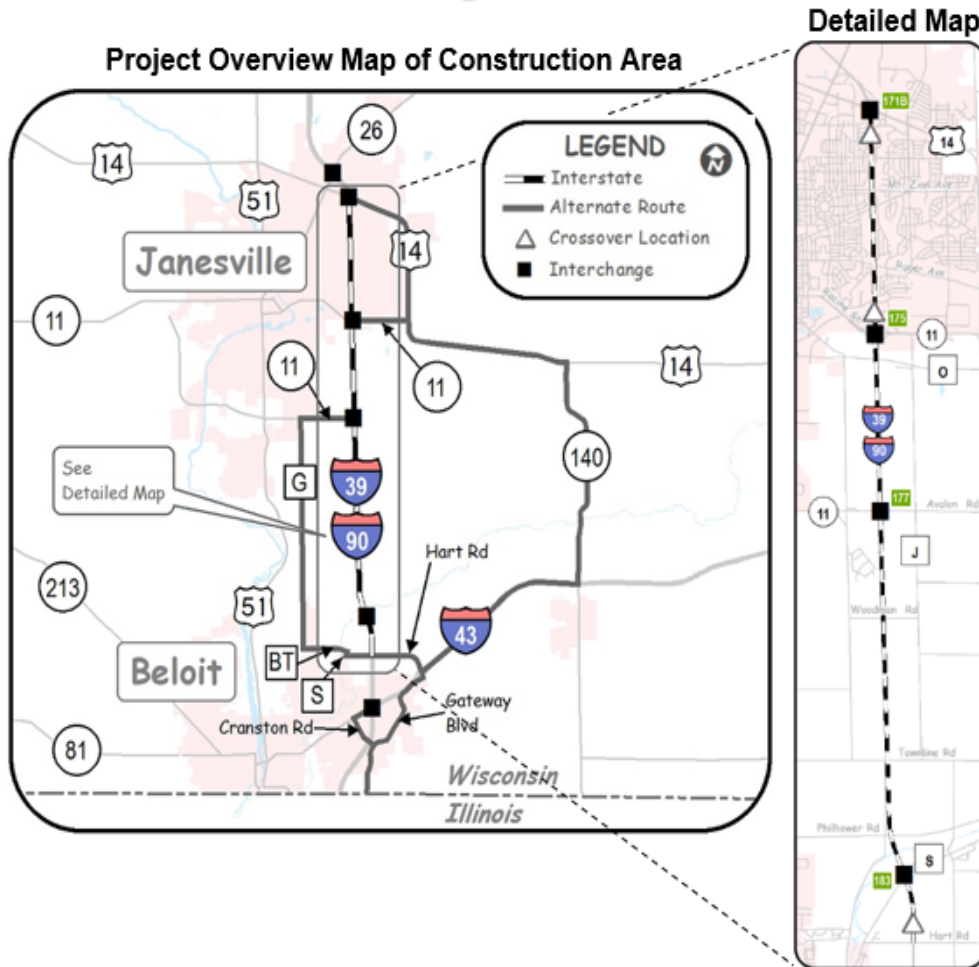


# South Segment improvements

- 12 miles from Illinois state line to County O
  - Six lanes from Illinois state line to WIS 11 (Avalon Road)
  - Eight lanes from WIS 11 to County O
- Interchanges reconstructed
- Roadway deficiencies addressed
- To be completed in 2022



# I-39/90 expansion – 2017-2020



- 12-mile stretch from Hart Road near Beloit to US 14 interchange
- Interstate to be reconstructed and expanded
- Alternate routes available
- This section of work to be completed by 2020



# I-39/90 traffic configuration during construction

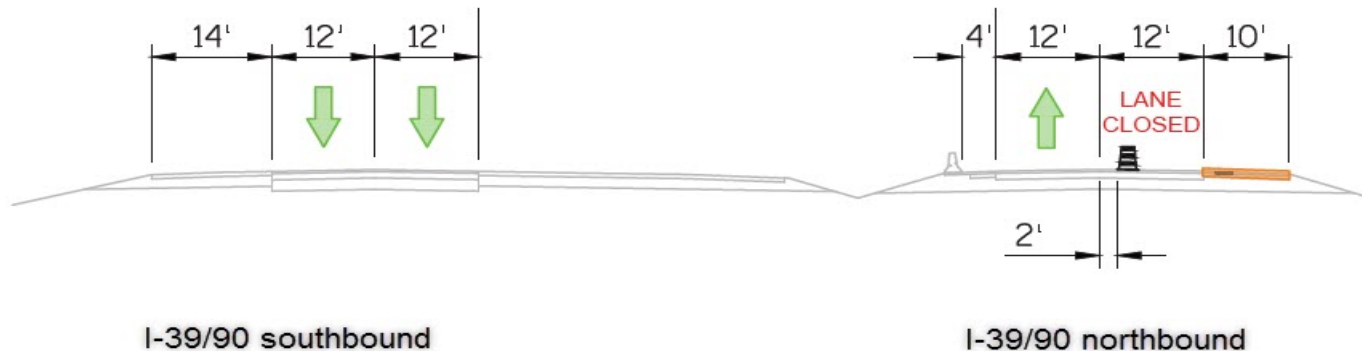
- Two lanes open in each direction on I-39/90, separated by a temporary median barrier wall.
- Periodic nighttime ramp closures at I-39/90 and WIS 11/Racine Street interchange.
- Crossovers for northbound traffic to occur near Racine Street in fall 2017, and move south to Hart Road in spring 2018.
- All I-39/90 northbound traffic to return to original lanes at US 14 interchange in Janesville.



# Construction Staging: September – mid-October 2017

**I-39/90 from WIS 11 (Racine St.) interchange  
to just south of US 14 (Humes Road) interchange**

**Nighttime only**

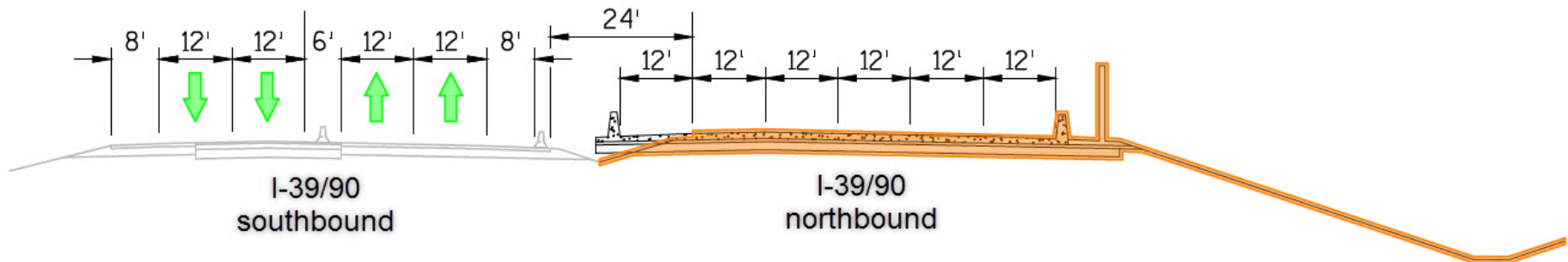


*Note: Dates are subject to change.*



# Construction Staging: Mid-October 2017 – Fall 2018

**I-39/90 from WIS 11 (Racine St.) interchange\*  
to just south of  
US 14 (Humes Road) interchange**



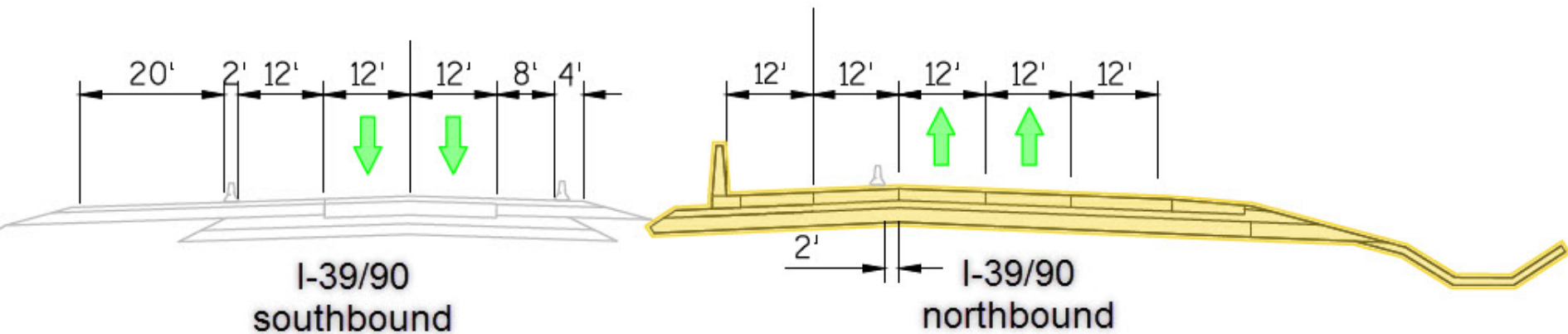
**\*In spring 2018, northbound crossover to occur  
at Hart Road near Beloit**

*Note: Dates are subject to change.*



# Construction Staging: Fall 2018 – Spring 2019

**I-39/90 from Hart Road near Beloit north  
to US 14 (Humes Road) interchange**

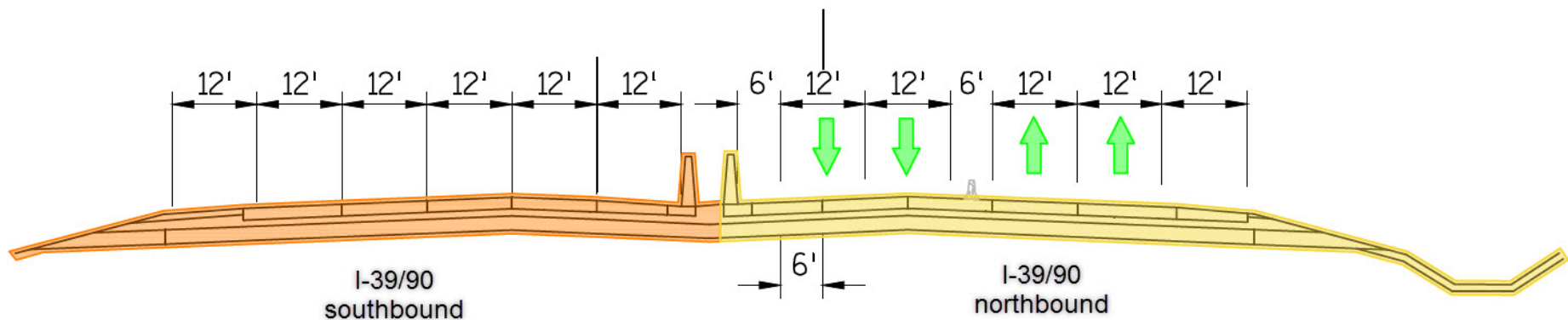


*Note: Dates are subject to change.*



# Construction Staging: Spring 2019 – Fall 2019

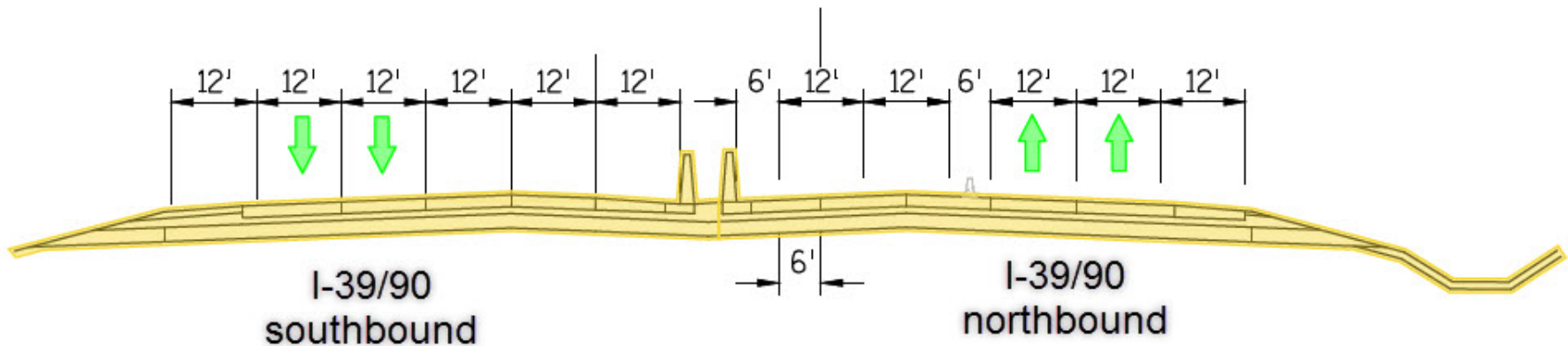
**I-39/90 from Hart Road near Beloit north  
to US 14 (Humes Road) interchange**



*Note: Dates are subject to change.*

# Construction Staging: Fall 2019 – Spring 2020

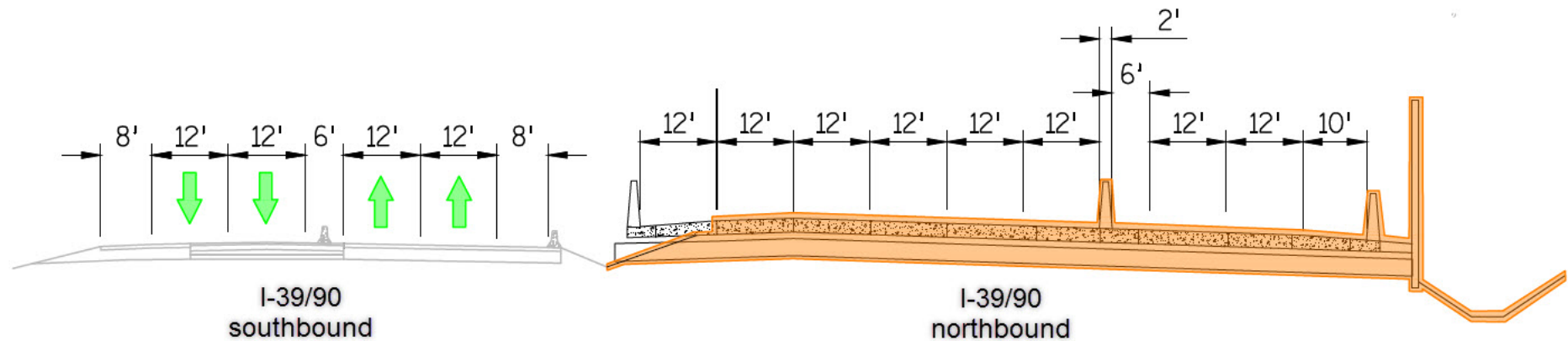
**I-39/90 from Hart Road near Beloit north  
to US 14 (Humes Road) interchange**



*Note: Dates are subject to change.*

# Construction Staging: Summer 2019 – Summer 2020

**I-39/90 just south of US 14 (Humes Rd.) interchange**



**Crossover for all I-39/90 traffic from northbound side to southbound side, just south of US 14 interchange.**

*Note: Dates are subject to change.*



# Noise barrier locations



## — Noise barrier locations

*Noise barriers will not be constructed on bridges*

## Anticipated schedule of noise barriers (subject to change)

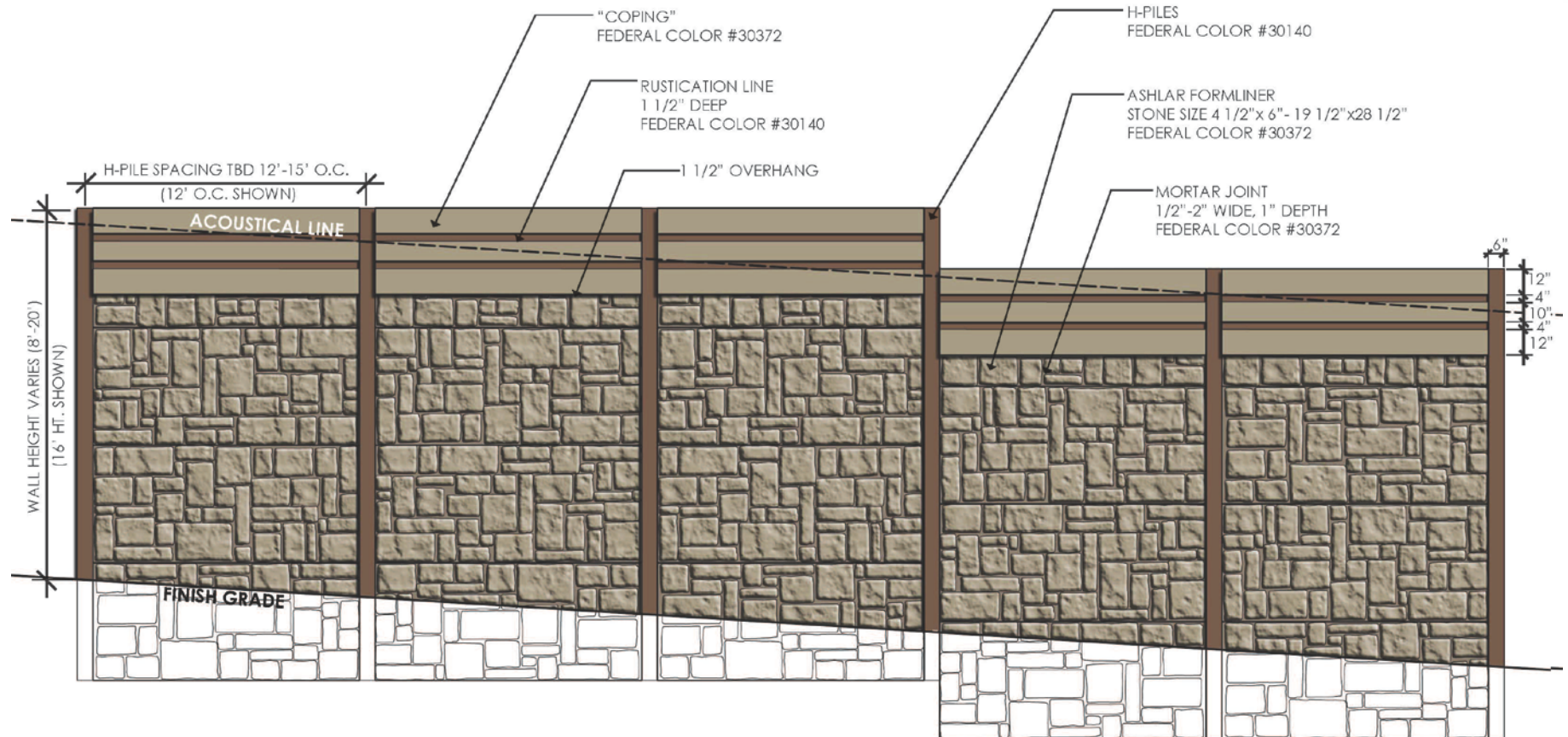
Newville:

- Spring 2018

Janesville:

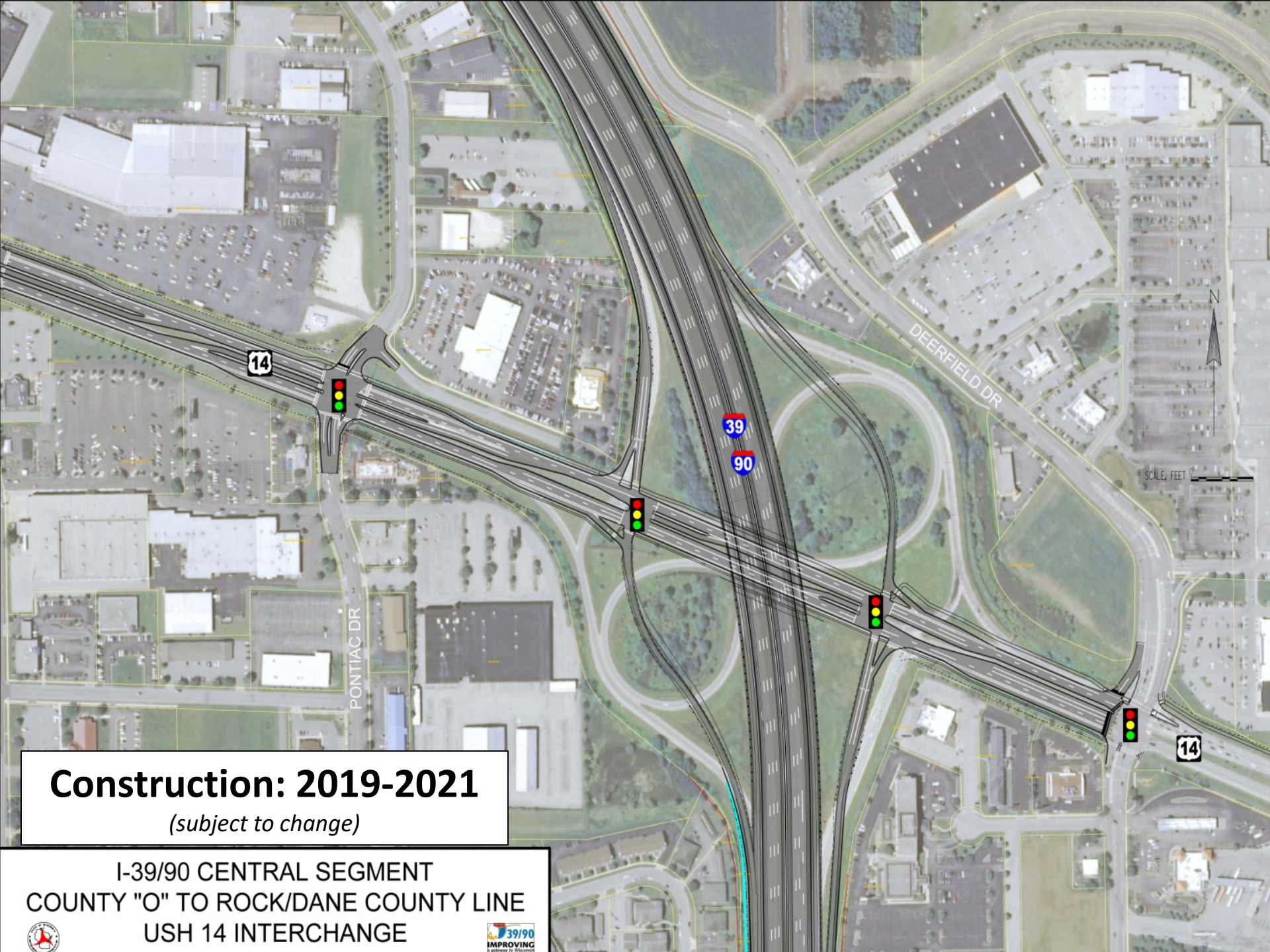
- I-39/90 northbound: spring/summer 2018
- I-39/90 southbound: summer 2019

# Noise Barrier – style and color



**NOISE WALL CONCEPT 2-1:  
BRICK**





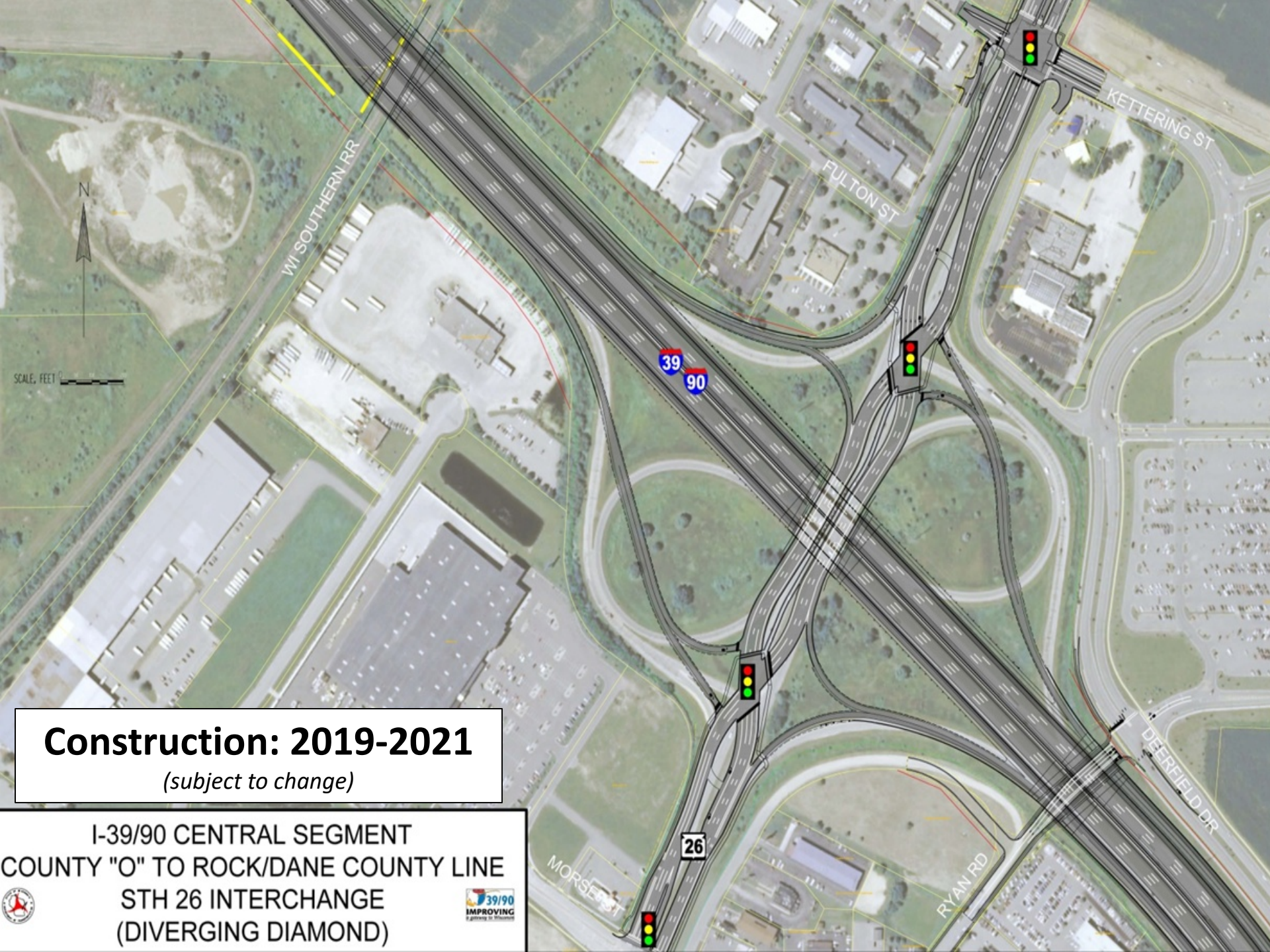
**Construction: 2019-2021**

*(subject to change)*

I-39/90 CENTRAL SEGMENT  
COUNTY "O" TO ROCK/DANE COUNTY LINE  
USH 14 INTERCHANGE







## Construction: 2019-2021

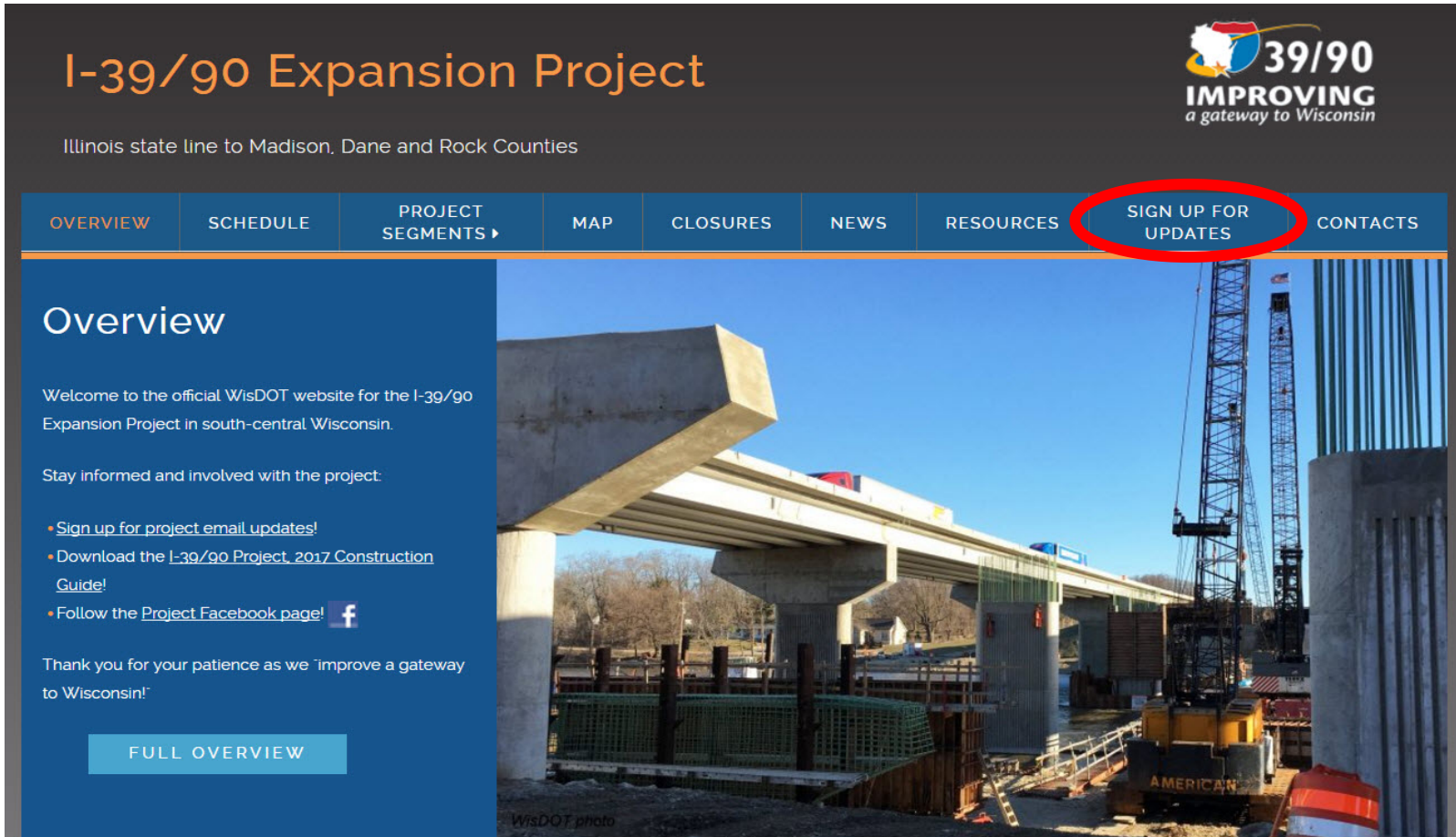
*(subject to change)*

I-39/90 CENTRAL SEGMENT  
COUNTY "O" TO ROCK/DANE COUNTY LINE  
STH 26 INTERCHANGE  
(DIVERGING DIAMOND)





# Stay informed and involved!



The screenshot shows the official WisDOT website for the I-39/90 Expansion Project. The header features the project title and the I-39/90 logo. A navigation bar includes links for Overview, Schedule, Project Segments, Map, Closures, News, Resources, Sign Up for Updates (highlighted with a red circle), and Contacts. The Overview section welcomes visitors and provides links to sign up for email updates, download a construction guide, and follow the project on Facebook. A large photograph of the bridge construction is on the right.

## I-39/90 Expansion Project

Illinois state line to Madison, Dane and Rock Counties


**39/90**  
**IMPROVING**  
*a gateway to Wisconsin*

OVERVIEW | SCHEDULE | PROJECT SEGMENTS ▶ | MAP | CLOSURES | NEWS | RESOURCES | **SIGN UP FOR UPDATES** | CONTACTS

### Overview

Welcome to the official WisDOT website for the I-39/90 Expansion Project in south-central Wisconsin.

Stay informed and involved with the project:

- Sign up for project email updates!
- Download the [I-39/90 Project, 2017 Construction Guide!](#)
- Follow the [Project Facebook page!](#) 

Thank you for your patience as we "improve a gateway to Wisconsin!"

[FULL OVERVIEW](#)

*WisDOT photo*

Register for project email updates at [www.i39-90.wi.gov](http://www.i39-90.wi.gov).

# Questions?

*[www.i39-90.wi.gov](http://www.i39-90.wi.gov)*

*[i39-90Project@dot.wi.gov](mailto:i39-90Project@dot.wi.gov)*

*[Facebook.com/WisconsinI3990Project](https://Facebook.com/WisconsinI3990Project)*

*(608) 884-1234*