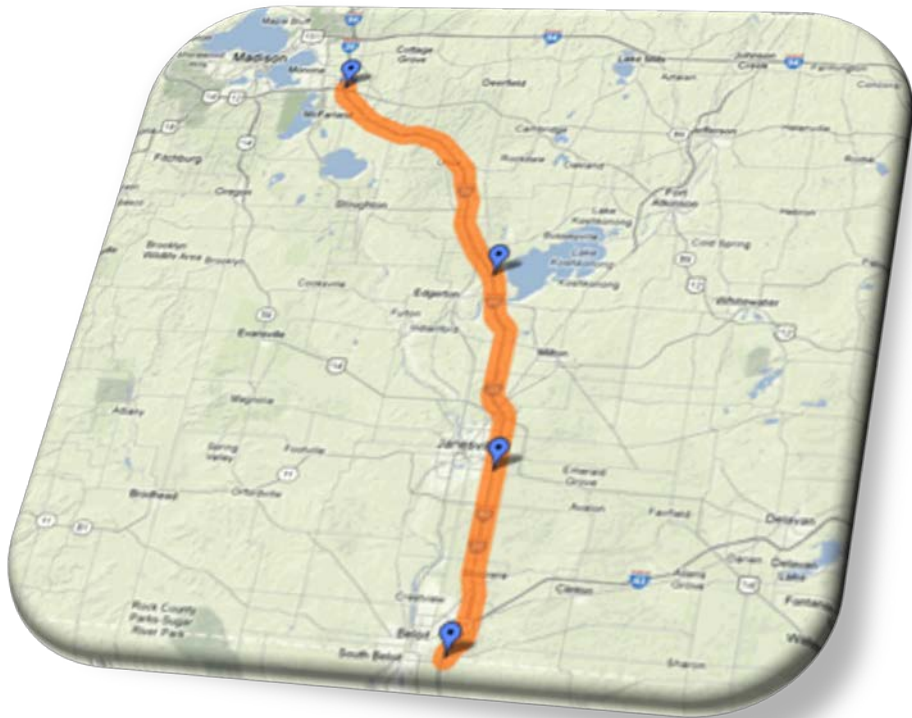


# I-39/90 Expansion Project



**Business Involvement Meeting**  
**December 7, 2016 4 p.m. to 6 p.m.**  
**Janesville, Wisconsin**

# I-39/90 Project Corridor



- Illinois State Line to US 12/18
- Approximately 45 Miles
- Major Transportation Corridor
  - People
  - Commerce
  - Tourism

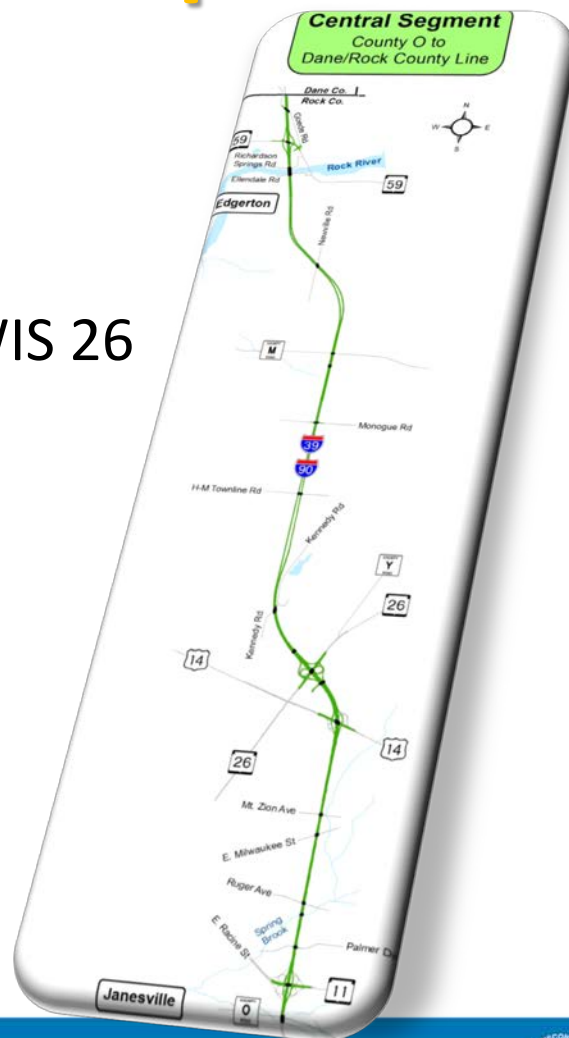
# I-39/90 Central Segment

- County O to Dane/Rock County Line



# I-39/90 Central Segment Improvements

- 8-lanes County O to WIS 26
- 6-lanes WIS 26 to Dane/Rock Co. Line
- Collector/Distributor Roads at US14/WIS 26
- Bridges Reconstructed
- Bike & Pedestrian Accommodations
- US 14/US 51 Alternate Route
- Noise Barriers
- Construction 2013 through 2023



# I-39/90 Central Segment Schedule

County O to US 14: July 2017 Letting

Fall 2017-Spring 2020 construction

US 14 to Kennedy Road: December 2018 Letting

Spring 2019-Fall 2021 construction

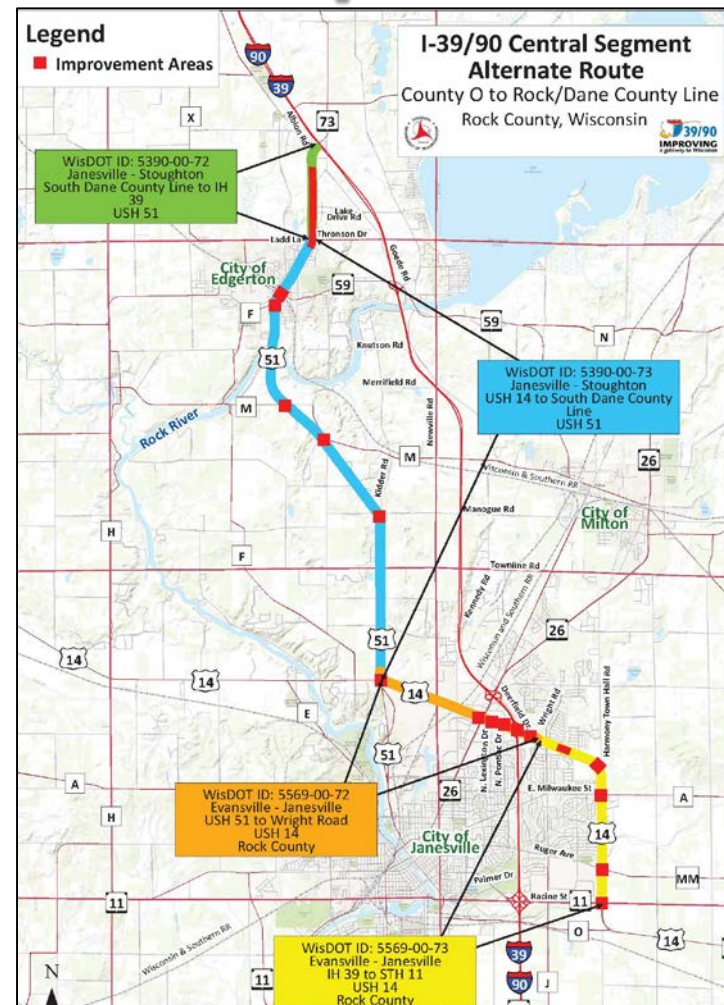
US 14 Reconstruction: June 2021 Letting

Spring 2022-Fall 2022 construction

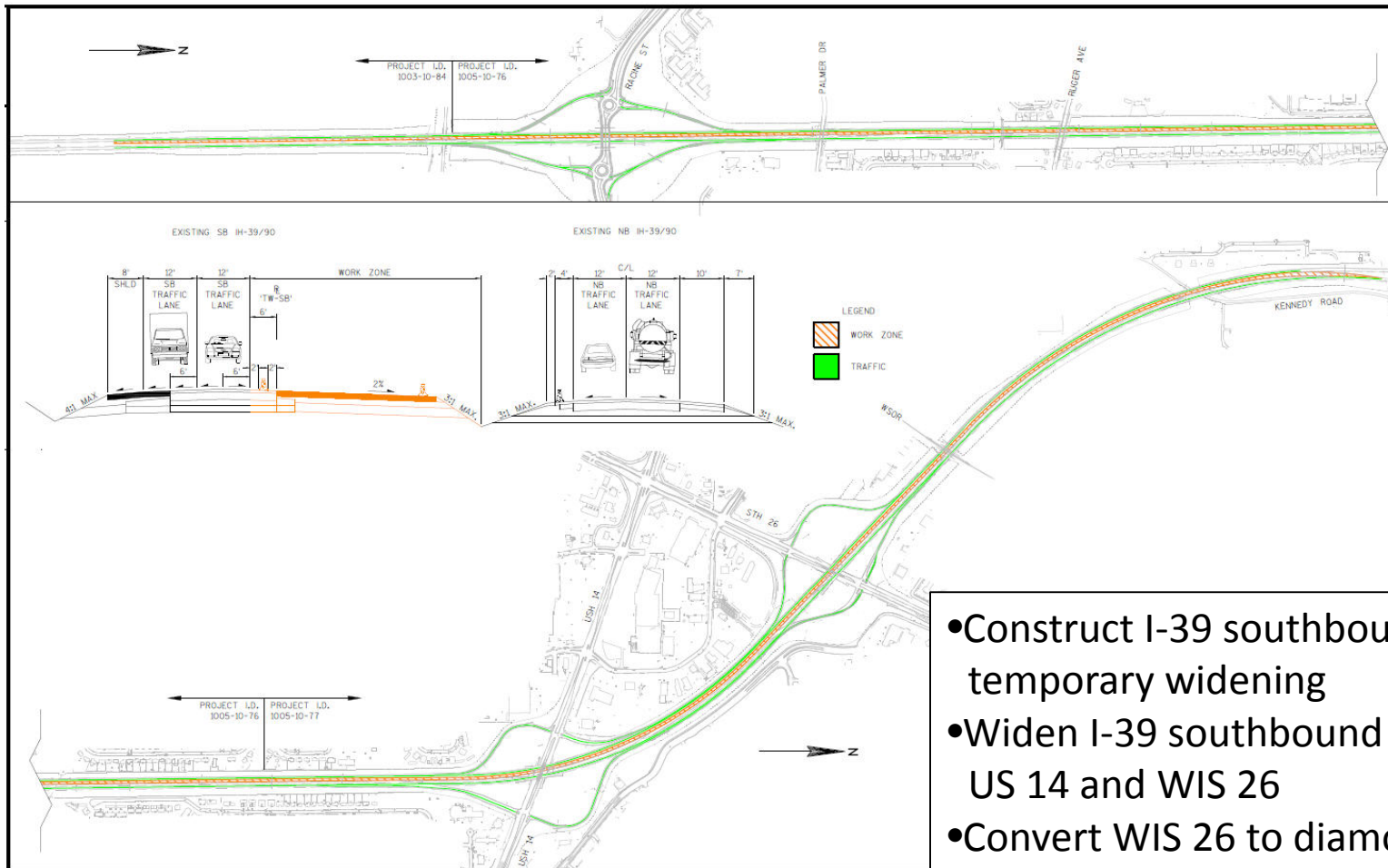


# I-39/90 Alternate Route Improvements

- US 14 to US 51 to WIS 73
- Completed 2015



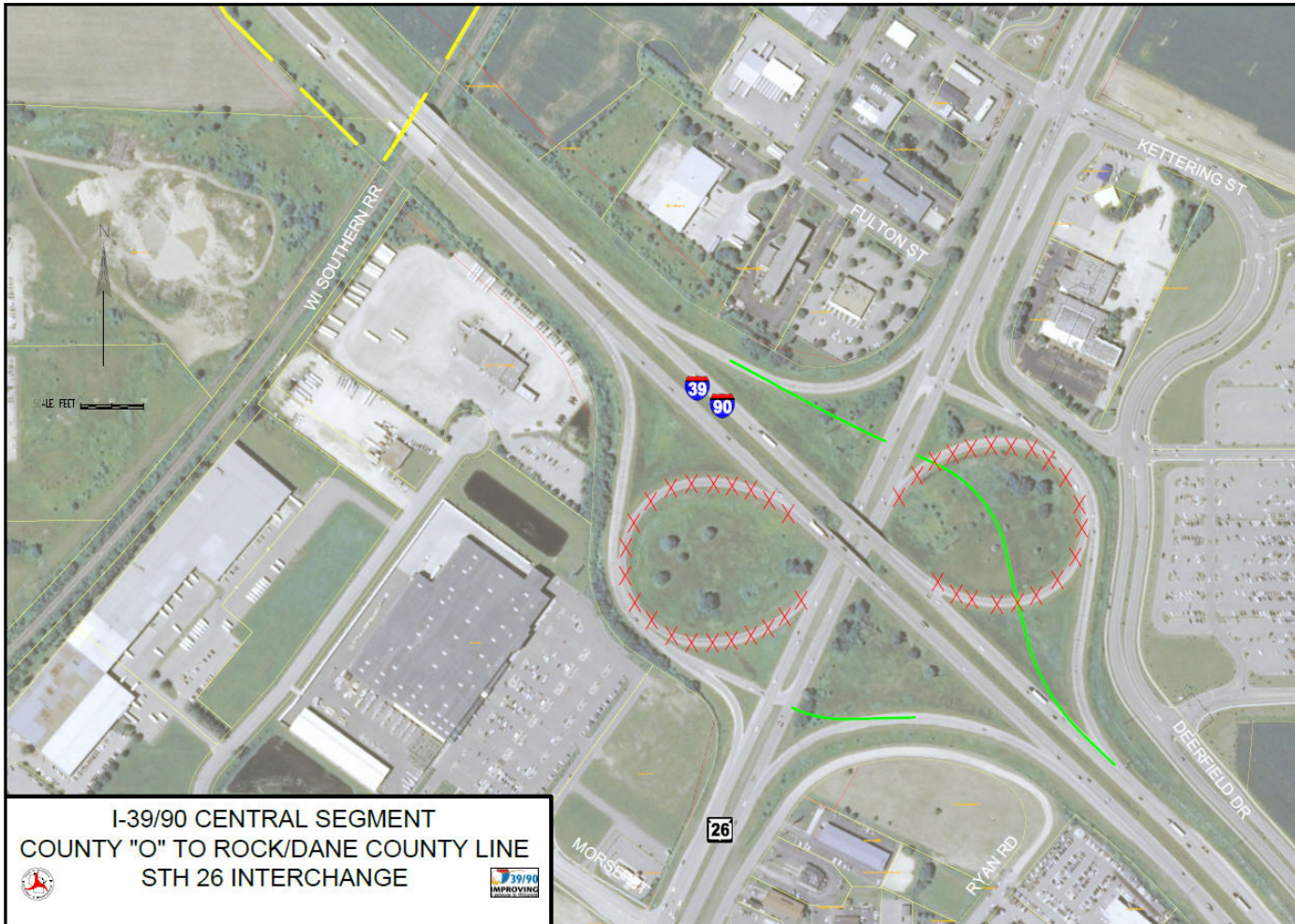
# I-39/90 Temporary Widening 2016



- Construct I-39 southbound temporary widening
- Widen I-39 southbound bridges over US 14 and WIS 26
- Convert WIS 26 to diamond interchange



# WIS 26 Temporary Interchange

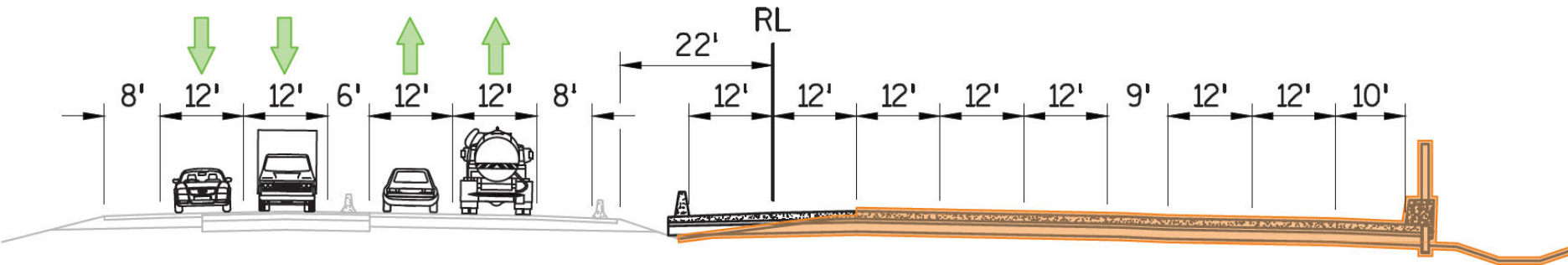




# I-39 Construction Staging

## Fall 2017-2021

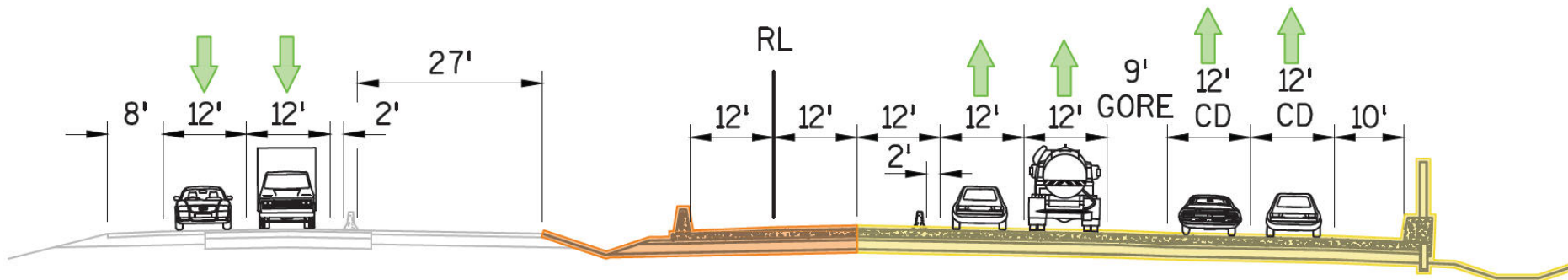
- I-39 traffic on southbound lanes
- Construct I-39 northbound roadway, bridges & walls



# I-39 Construction Staging

## Fall 2017-2021

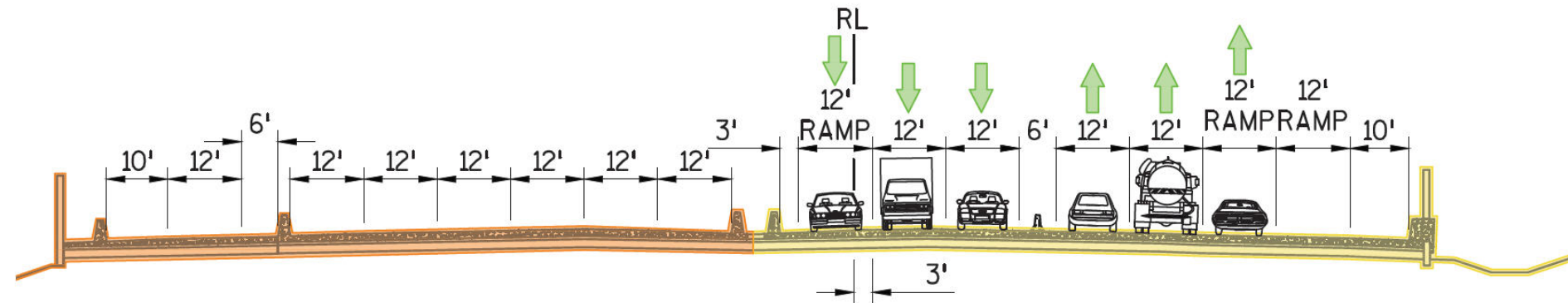
- I-39 southbound traffic on southbound lanes
- I-39 northbound traffic on new northbound lanes
- Construct I-39 northbound median and inside shoulder



# I-39 Construction Staging

## Fall 2017-2021

- I-39 traffic on new northbound lanes
- Construct I-39 southbound roadway, bridges & walls

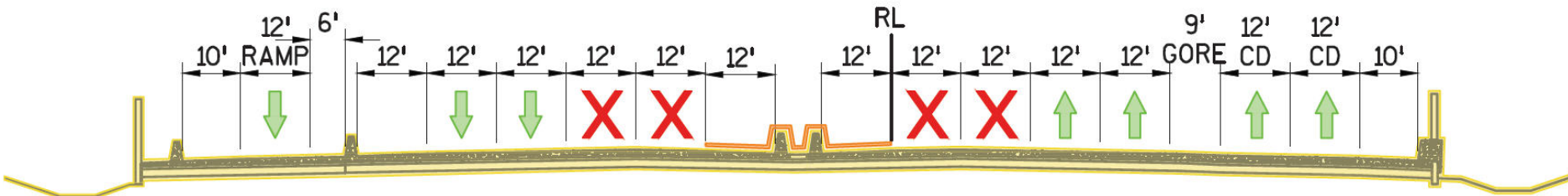




# I-39 Construction Staging

## Fall 2017-2021

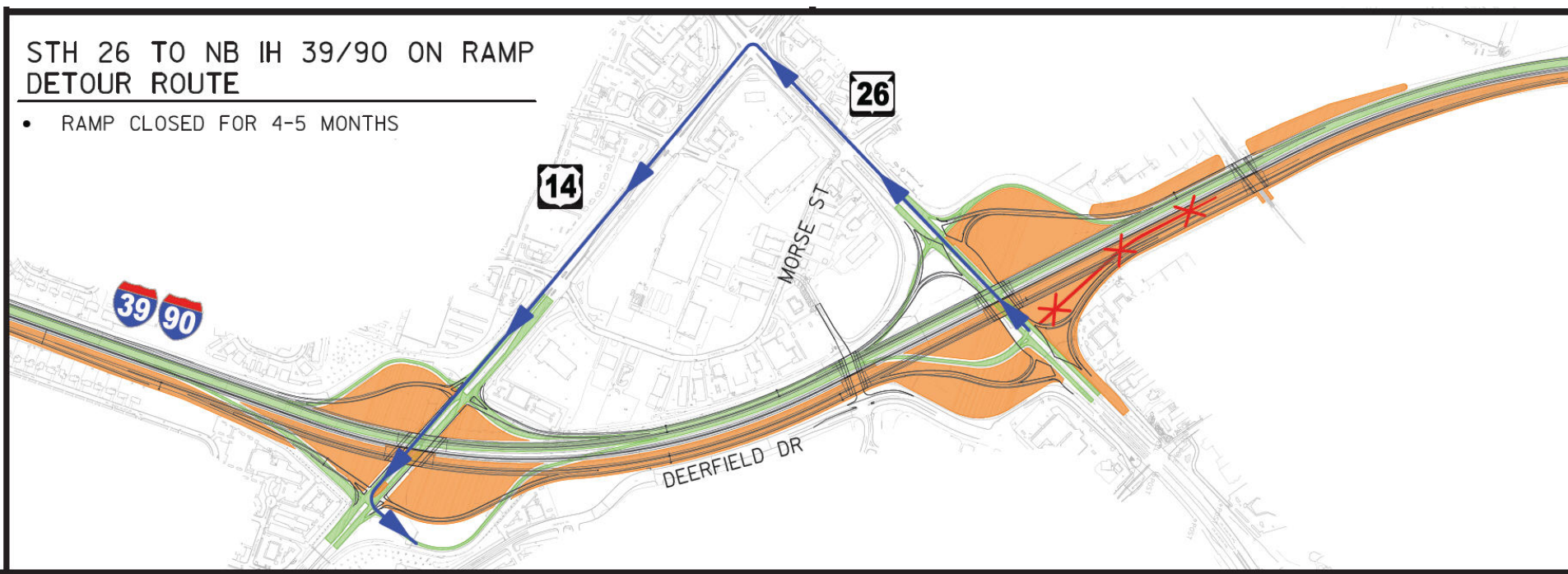
- I-39 southbound traffic on new southbound lanes
- I-39 northbound traffic on new northbound lanes
- Construct I-39 median and inside shoulder



# WIS 26 Ramp Closure Detour 2019

WIS 26 ramp closures:

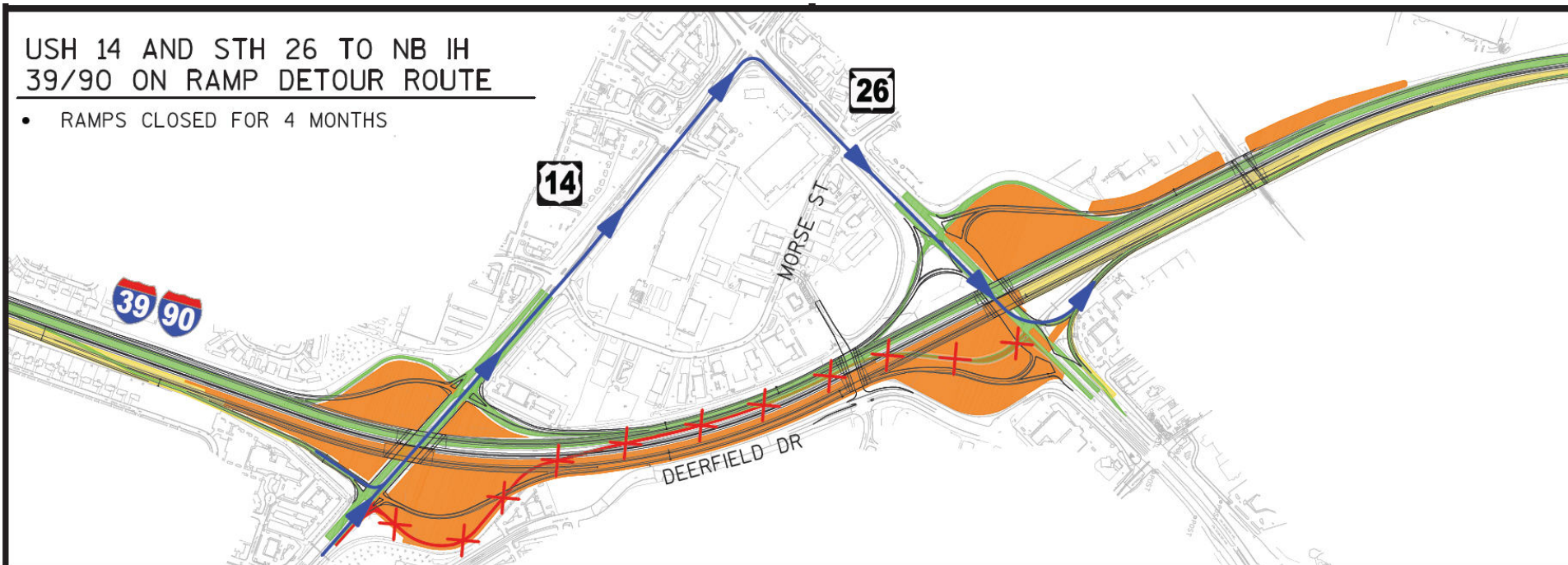
- WIS 26 northbound on-ramp closed (April 2019 through August 2019)  
detour via US 14 and WIS 26



# US 14/WIS 26 Ramp Closure Detour 2020

US 14/WIS 26 ramp closures:

- US 14 northbound on-ramp & WIS 26 northbound off-ramp closed (April through July): detour via US 14 and WIS 26

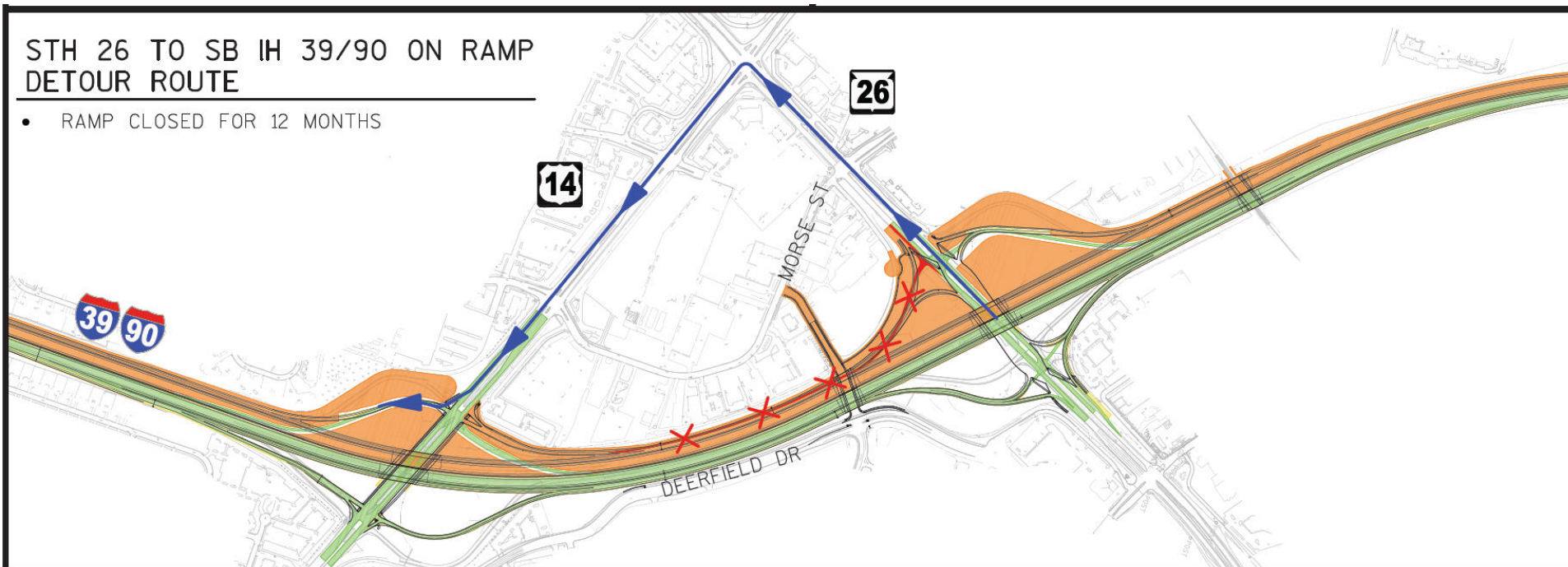




# WIS 26 Ramp Closure Detour 2020-21

WIS 26 ramp closures:

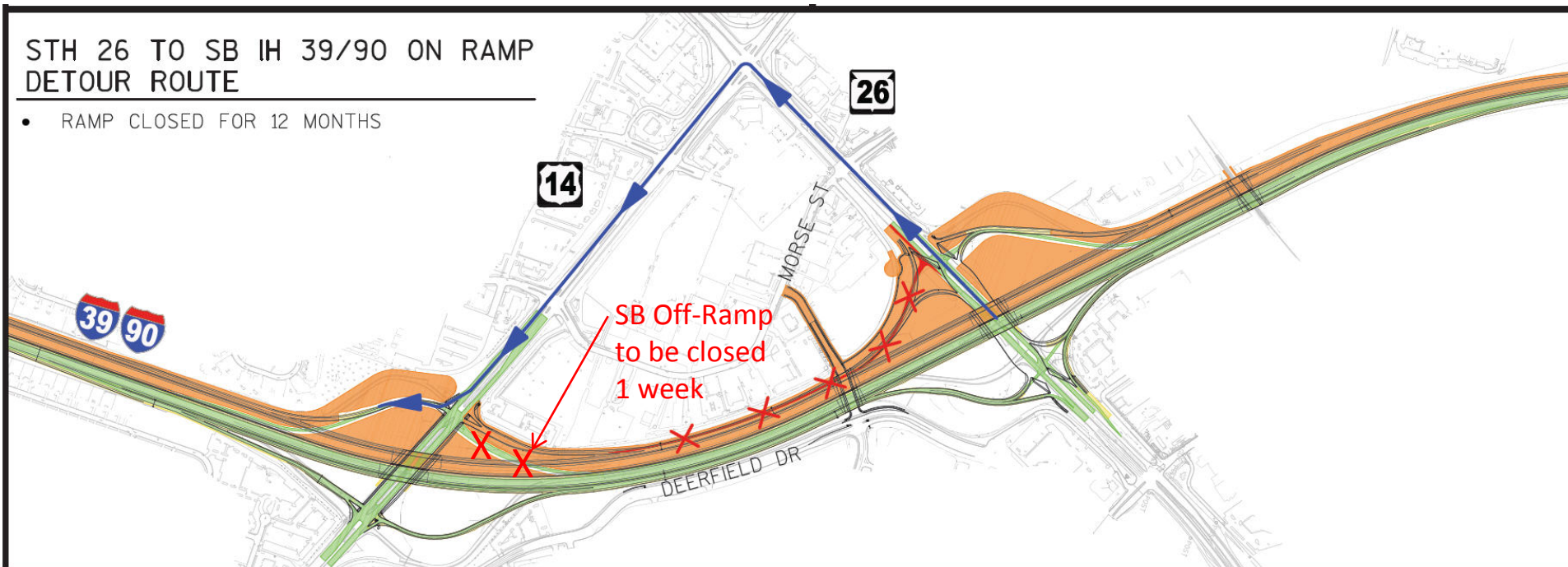
- WIS 26 southbound on-ramp closed (October 2020 through October 2021): detour via US 14 and WIS 26



# US 14 Ramp Closure Detour 2020

US 14 ramp closures:

- US 14 southbound off-ramp closed (1 week in October):  
detour via US 14 and WIS 26



# Side Road Closures

## US 14 & STH 26

- Night closures for bridge removal and girder placement (detour provided)

## Palmer Dr., Ruger Ave., Milwaukee St. & Mt. Zion Ave.

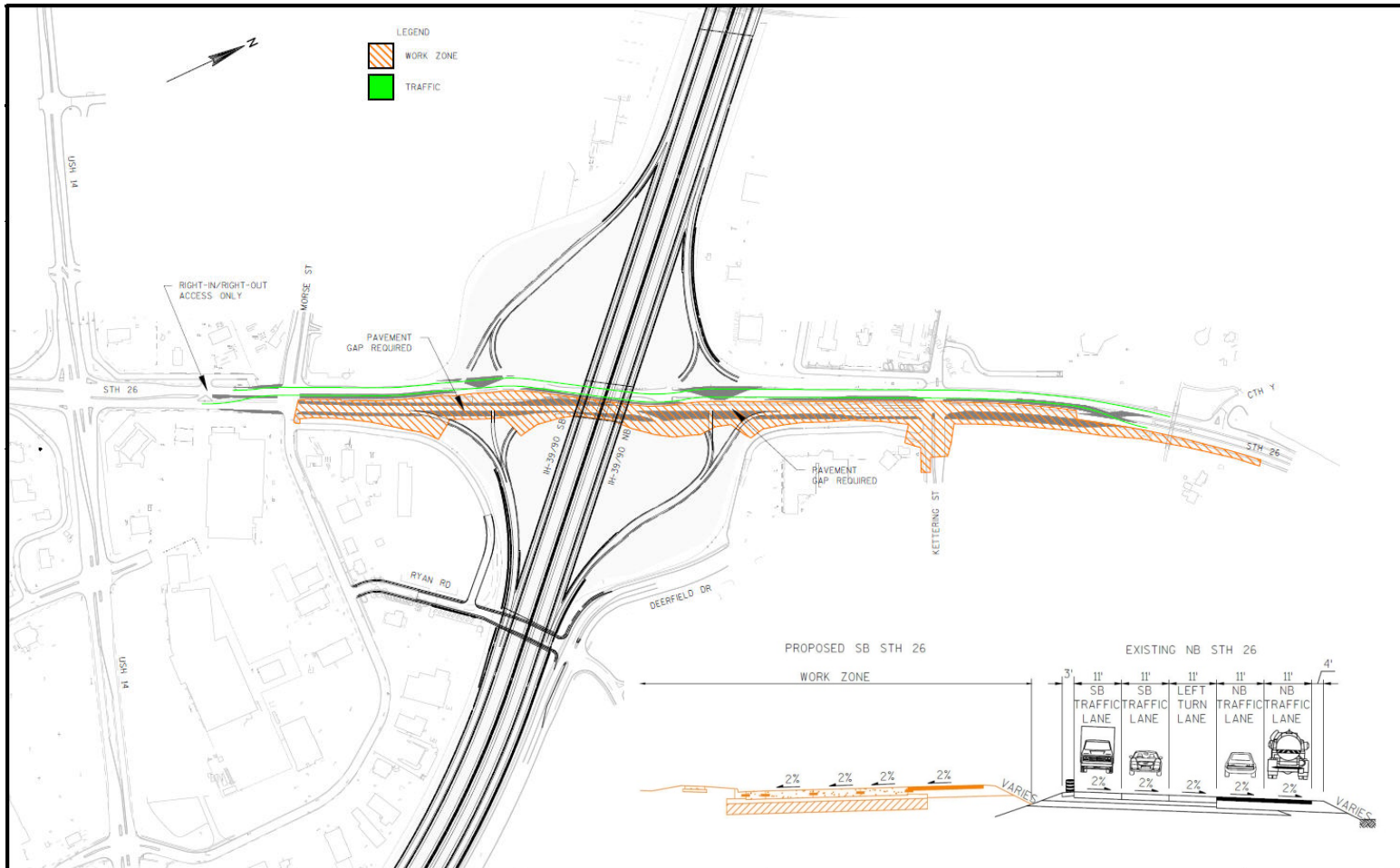
- Day closures for bridge removal and girder placement (no detour provided)

## Kennedy Road (April 2019-August 2019 & Spring 2021)

- Full closure for roadway and bridge construction (no detour provided)



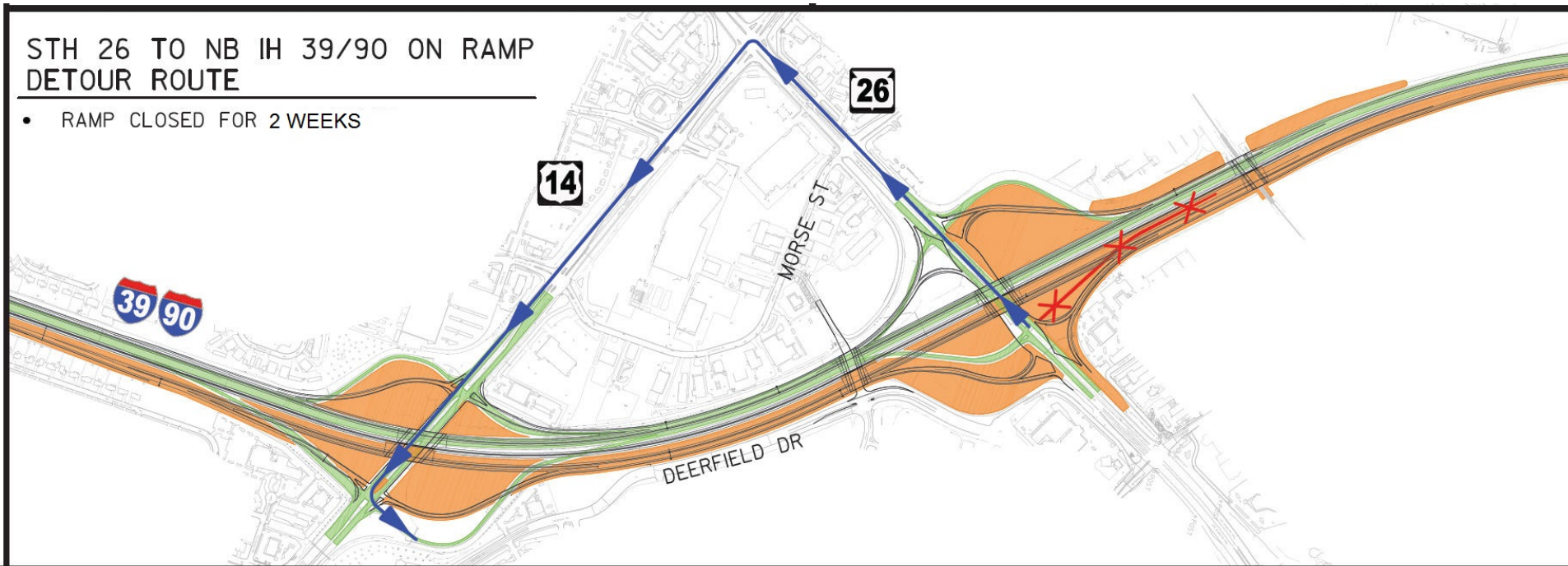
# Construction Staging 2021 (WIS 26)



# WIS 26 Ramp Closure Detour 2021

WIS 26 ramp closures:

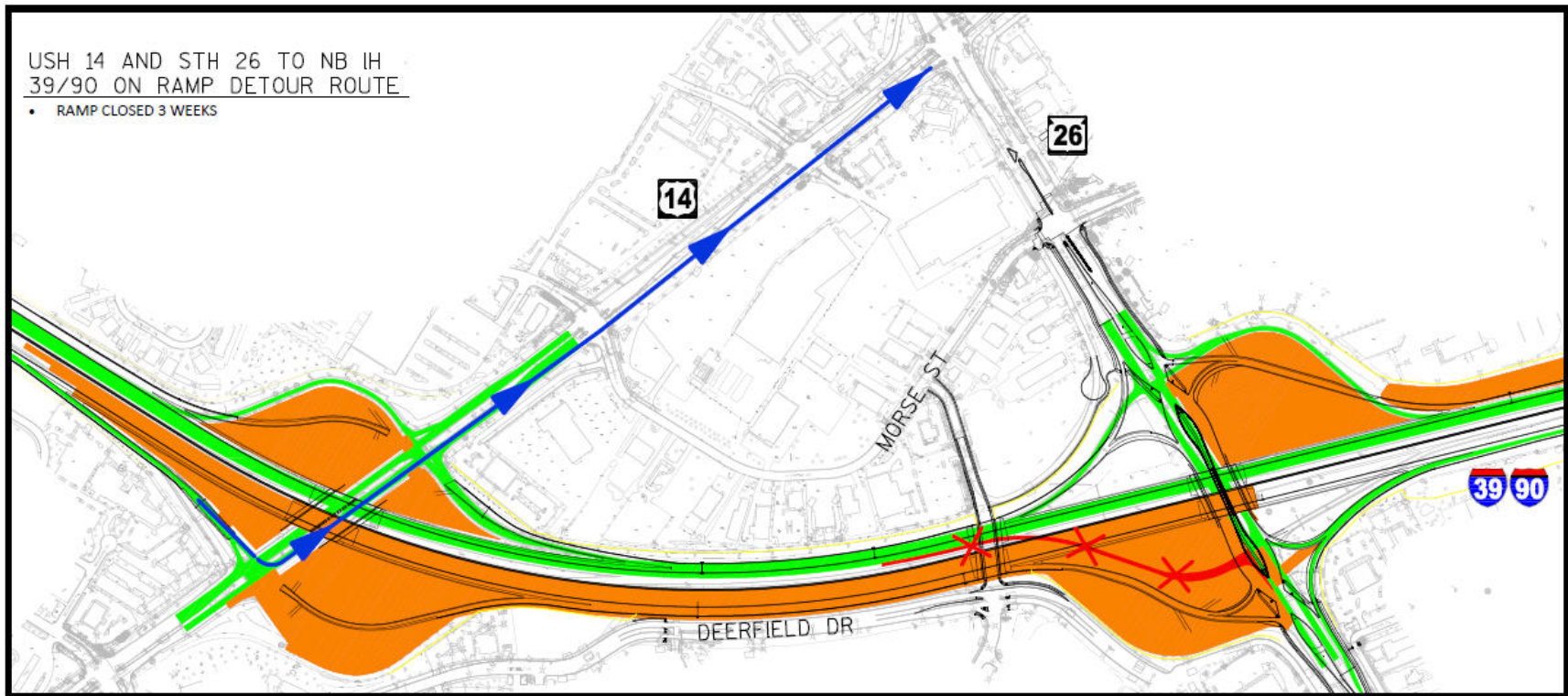
- WIS 26 northbound on-ramp closed (3 weeks in July)  
detour via US 14 and WIS 26



# WIS 26 Ramp Closure Detour 2021

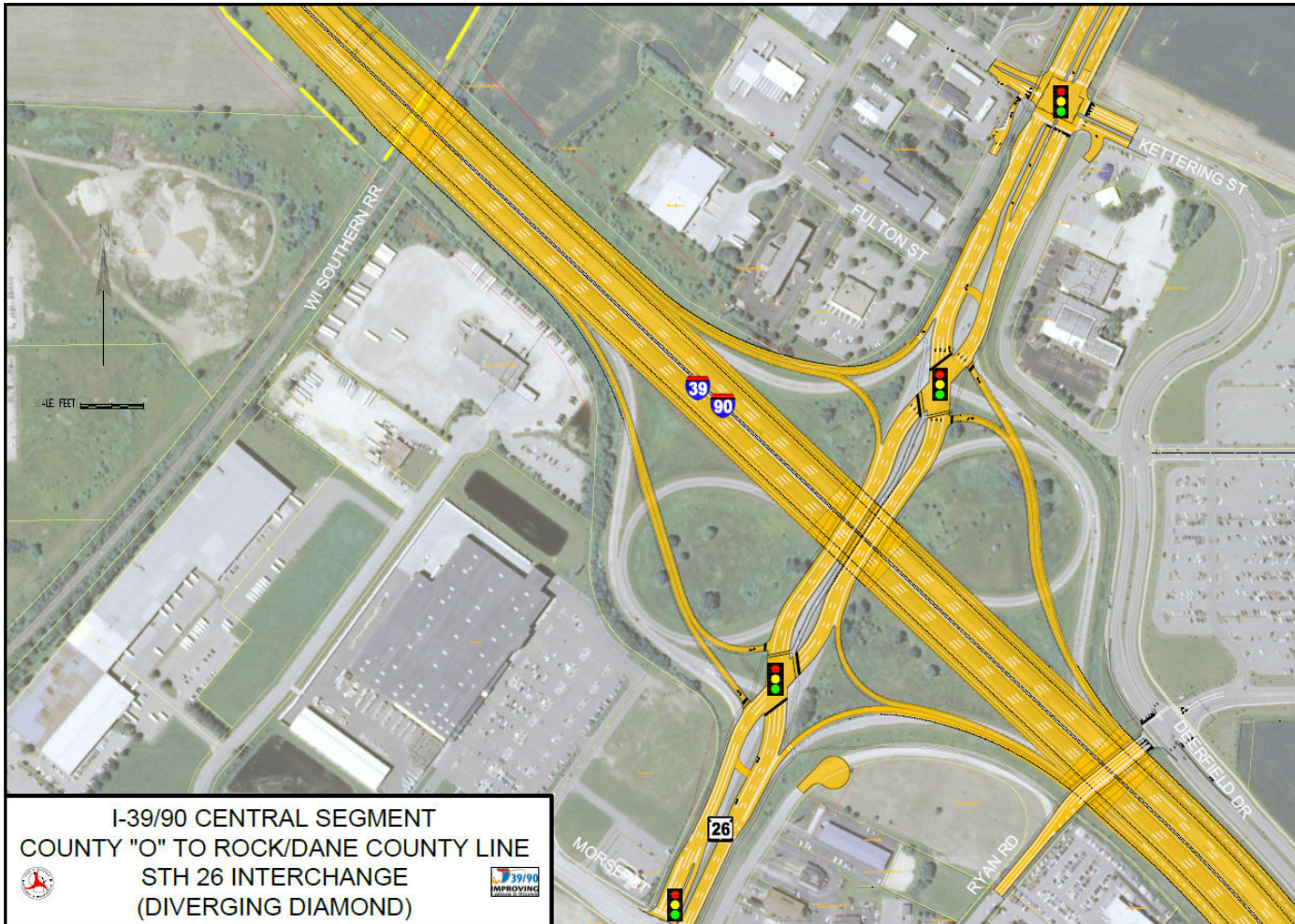
WIS 26 ramp closures:

- WIS 26 northbound off-ramp closed (3 weeks in July-Aug.):  
detour via US 14 and WIS 26





# WIS 26 Interchange



**WIS 26  
Diverging  
Diamond  
(DDI)  
with  
Traffic  
Signals**

- Single lane each direction
- Truck Access
- Ryan Road open





# Construction Staging 2022 (US 14)

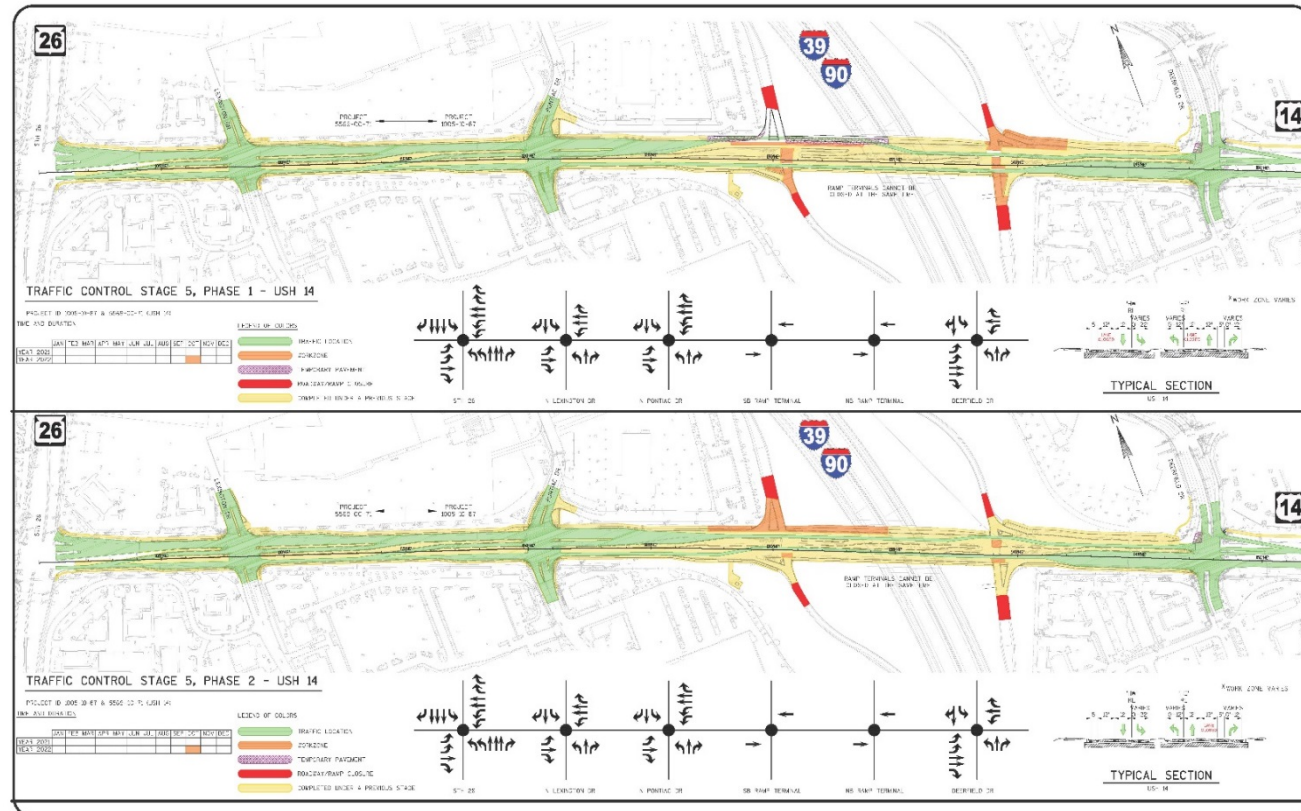
## Lexington/Pontiac

- Option #1  
No restrictions
- Option #2  
Right-in/right-out
- Option #3  
Close half intersection



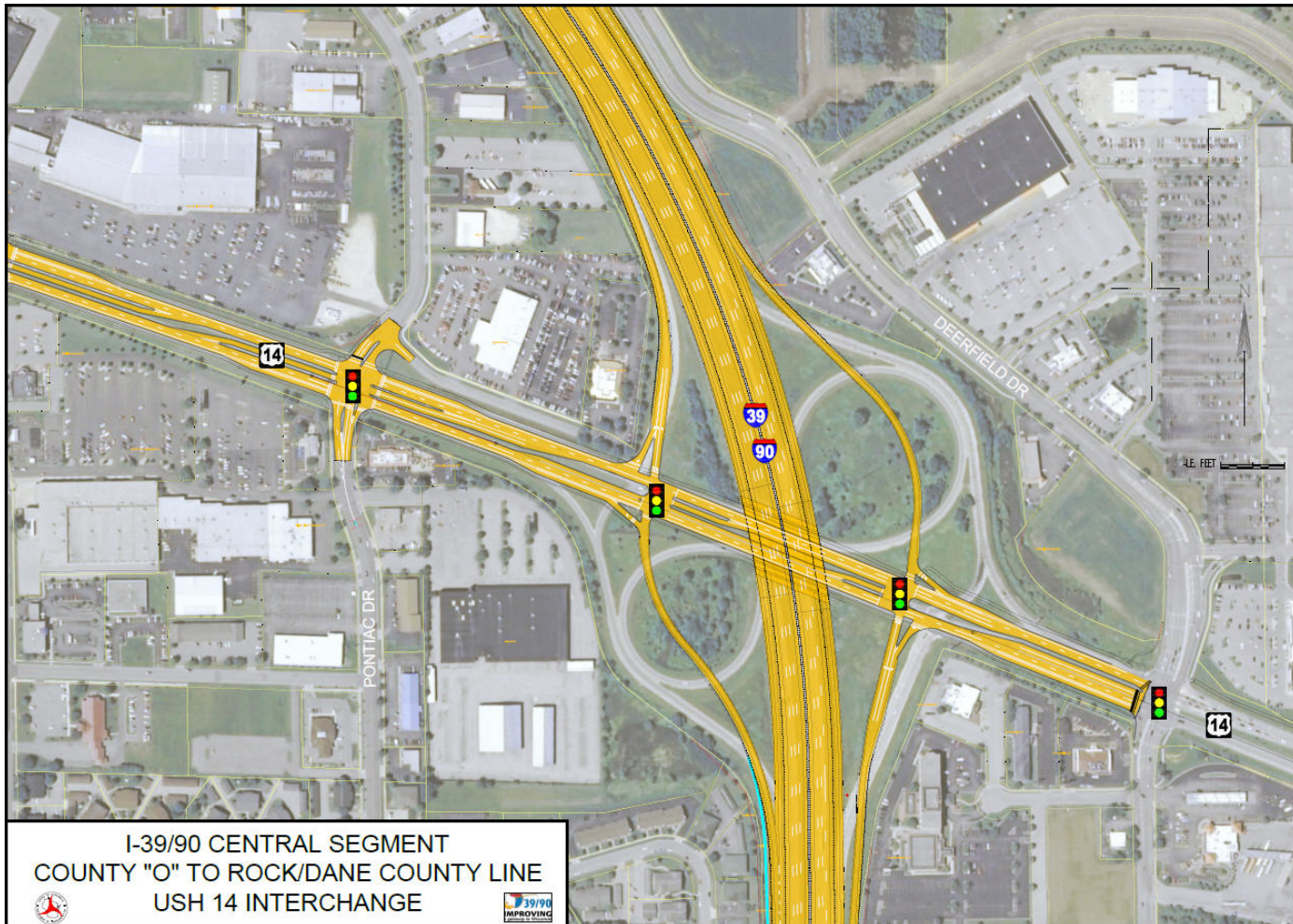
# Construction Staging 2022 (US 14)

- Ramp Closure
- 2 weeks each ramp
- Fall 2022





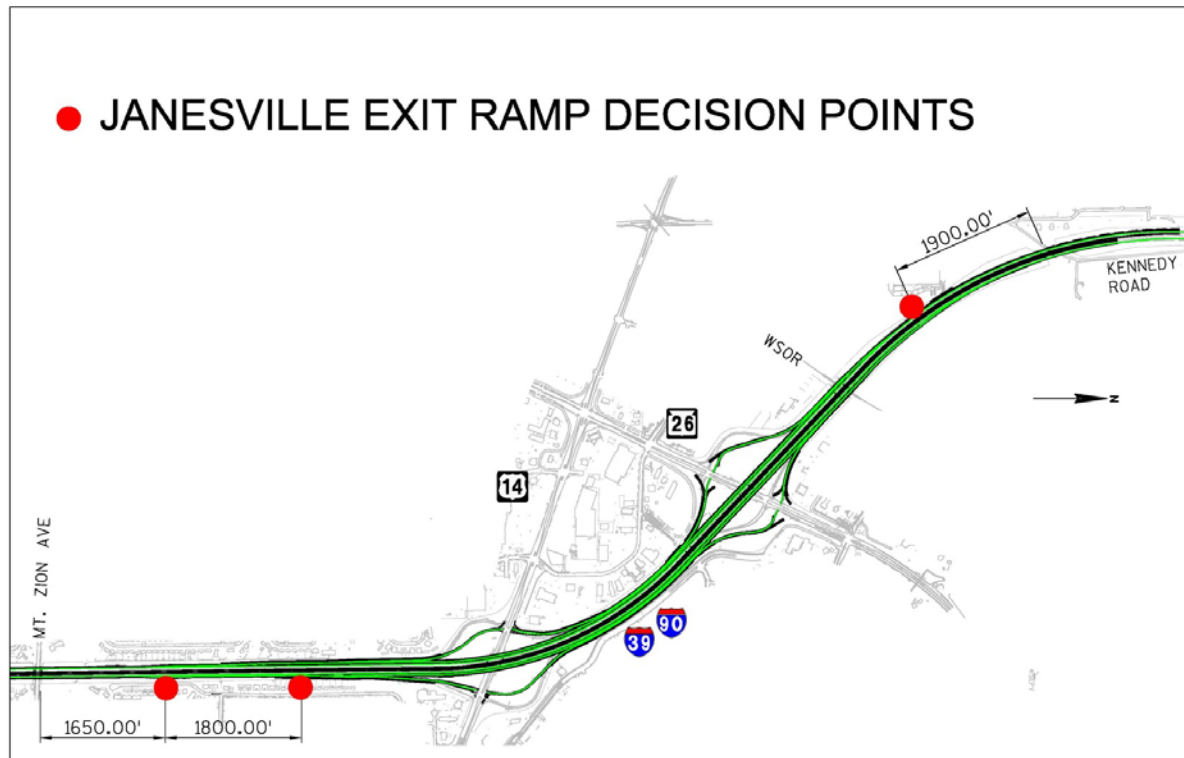
# US 14 Interchange



**US 14  
Diamond  
with  
Traffic  
Signals**

# Collector-Distributor System

- Northbound C/D System open Fall 2020
- Southbound C/D System open Fall 2021





**NORTHBOUND IH 39/90 COLLECTOR DISTRIBUTOR (CD) ROAD SIGNING**

This map illustrates the proposed road signing for northbound Interstate Highway 39/90 along its Collector-Distributor (CD) roads. The corridor runs horizontally across the middle of the page, starting from Stafford Rd on the left and extending eastward towards the intersection with Interstate 49 (I-49) on the right.

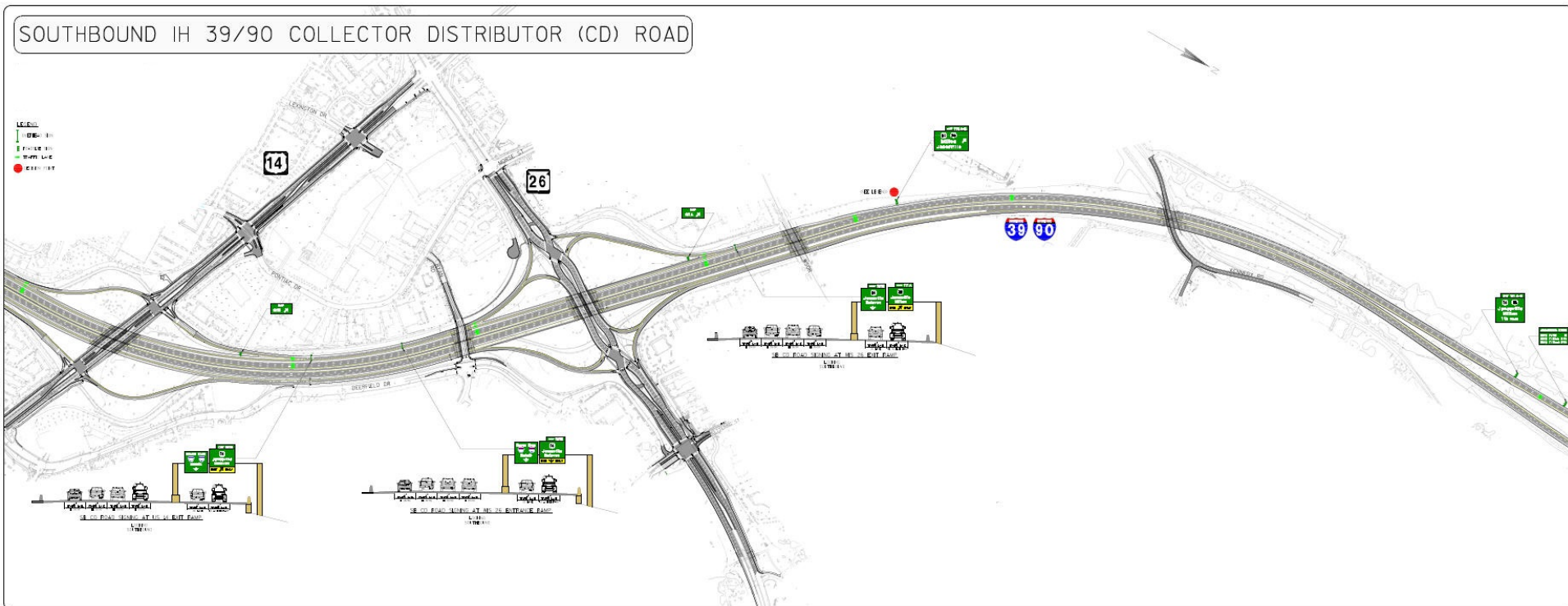
**Legend:**

- CD ROAD SIGNING
- INTERSECTION

**Key Features and Locations:**

- Stafford Rd:** Located at the far left, featuring a large overhead sign structure with multiple lanes.
- Somerset Dr:** An intersection further east, also marked with a red dot.
- Green Valley Dr:** Another intersection point marked with a red dot.
- I-39/I-90:** The main highway corridor running horizontally, with shields for both routes visible.
- I-49:** A major vertical interchange on the right side of the map, labeled with route shield 14.
- Other Roads:** Various local streets are shown, including Lexington Dr, Pontiac Dr, and others, some with their own signage structures.
- Signage Details:** Numerous overhead signs are depicted above the roadway, indicating lane directions, distances, and specific road names. Some signs include vehicle icons to represent traffic flow or lane types.

# Collector-Distributor System





# Navigation Company Outreach

Tom-Tom

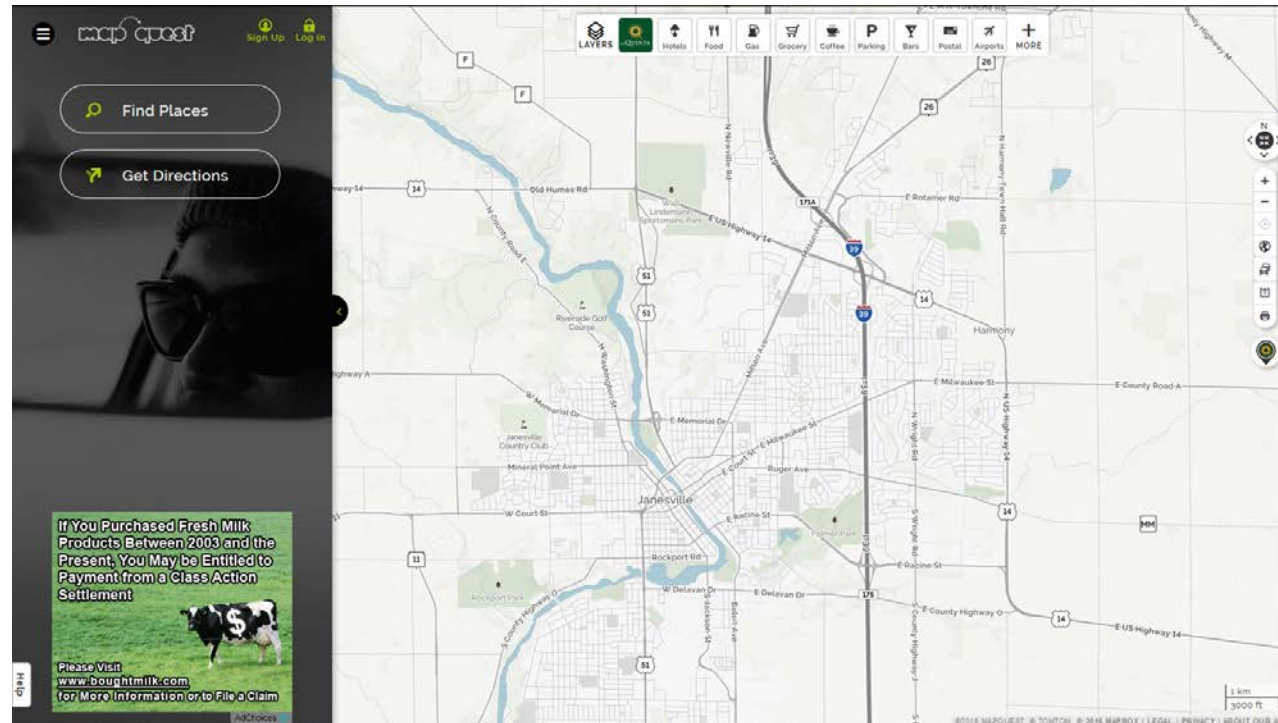
Garmin

Google Maps

Mapquest

Bing

Magellan





# Overview

- **Sign up for project email updates.** Also provide names and emails for others within your organization!
- Attend public meetings to increase your knowledge of the project and hold your own meetings with other businesses.
- Attend monthly business coordination meetings with the contractor and field engineers during the life of the construction projects.



# Overview

- Get involved early. Advanced planning and organization pays off.
- Keep your customers informed – update website and social media sites often.
- Partner with neighboring businesses, your local chamber and community leadership.
- Stay positive! Customers do notice.

# Verona Road Business Coalition

Home About ▾ Alternate Routes Special Offers Media Business Resources ▾ Contact Us

**BUILDING OUR FUTURE**  
**VERONA ROAD BUSINESS COALITION**

Receive exclusive offers  
 and coupons during  
 construction

Register for updates & offers

Our Proud Sponsors



## Welcome to the Verona Road Business Coalition

Current Special Offers

Businesses on Verona Road cherish your patronage. In

Alternative Routes

If you are using Verona Road regularly, you should stay

Business Toolkit

Concerned about the potential impac

In October 2014, a volunteer group of Verona Road (US 18/151) businesses and citizens developed the Verona Road Business Coalition.





# Questions?

*[www.i39-90.wi.gov](http://www.i39-90.wi.gov)*

*[i39-90Project@dot.wi.gov](mailto:i39-90Project@dot.wi.gov)*

*[Facebook.com/WisconsinI3990Project](https://Facebook.com/WisconsinI3990Project)*

*(608) 884-1234*