

# I-39/90 Expansion Project

*WIS 26 and US 14 interchanges*

March 19, 2019





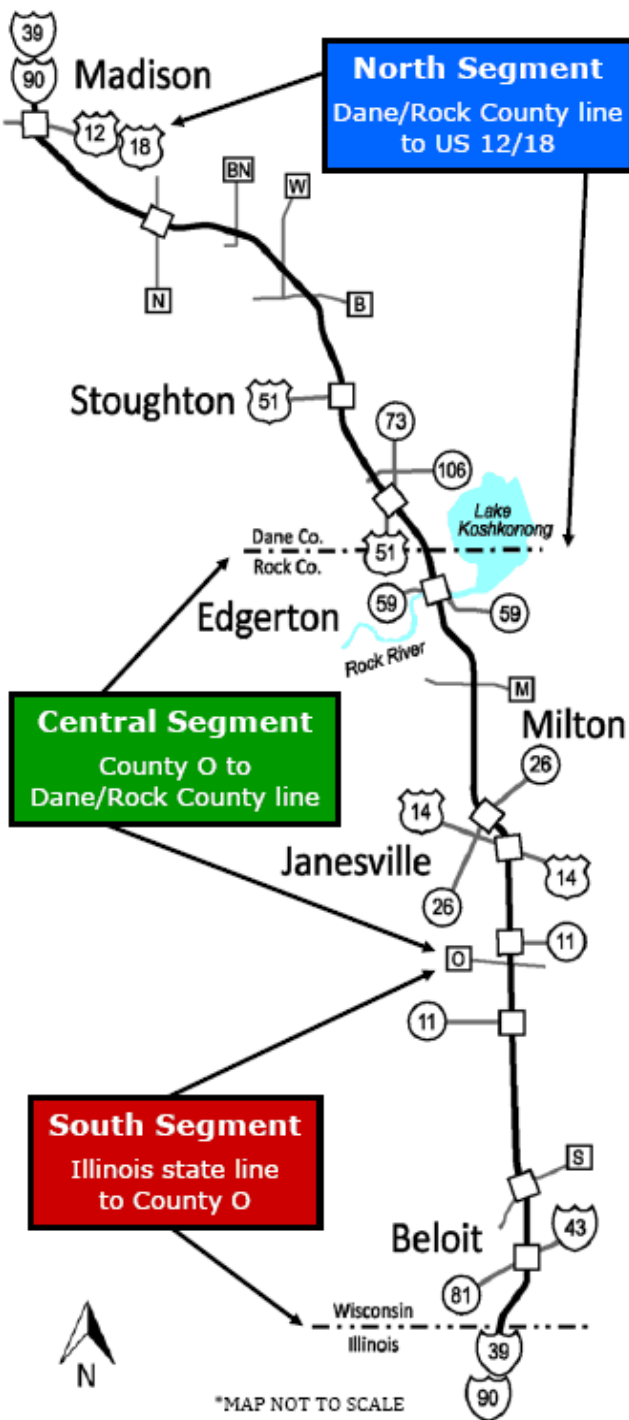
# Overview

- Interstate improvements
- 2019 construction highlights
- Janesville area construction
  - Southbound expansion in 2019
  - WIS 26/US 14 interchanges
    - DDI at I-39/90 and WIS 26 interchange
    - Anticipated 2019 – 2021 staging
    - Scheduled ramp and road closures
    - Collector-Distributor Lane System
  - US 14 reconstruction in 2022
- Business involvement
- How to stay connected on this project!



# Interstate improvements

- Reconstruct and expand 45 miles of I-39/90 from four to six lanes.
- Expand from four to eight lanes from WIS 11 (Avalon Road) to the WIS 26 interchange in Janesville.
- Reconfigure 11 interchanges.
- Replace more than 100 bridges.
- **Construction: 2013 – 2021**



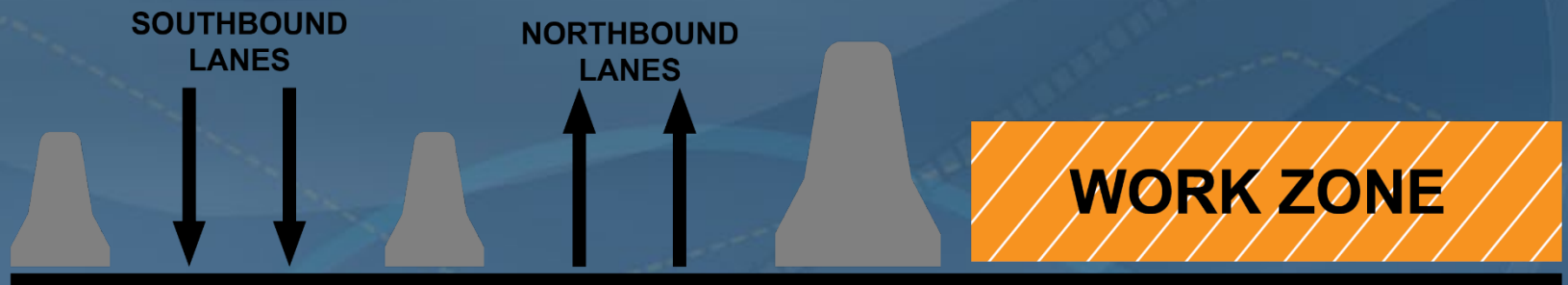
# MEGA construction in 2019



- Northbound Interstate expansion:
  - US 14 interchange to Kennedy Road, north of WIS 26 interchange
  - Illinois state line to Cranston Road in Beloit (spring/summer)
- Southbound Interstate expansion:
  - County AB near Madison to two miles north of US 51 interchange (Stoughton Exit 156)
  - South of Rock River bridges to Kennedy Road, north of Janesville
  - US 14 interchange to Hart Road, north of Beloit
  - Cranston Road to Illinois state line in Beloit (summer/fall)
- Temporary widening of I-39/90 northbound:
  - County AB to I-39/90 and US 12/18 (Beltline) interchange
- I-43 reconstruction between County X/Hart Road and I-39/90

# Interstate construction staging

- Two lanes open in each direction, separated by median barrier wall.
- All four lanes of I-39/90 traffic on existing and temporary pavement.
- Interstate construction/expansion on other side.





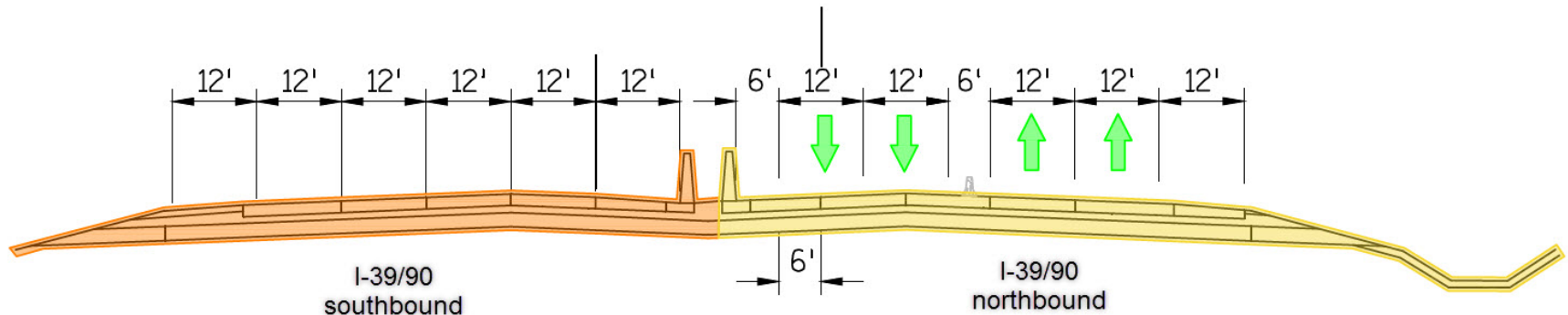
# I-39/90 northbound expansion, Janesville



# Interstate Construction Staging:

*Spring 2019 – Fall 2019*

**I-39/90 from Hart Road near Beloit north  
to US 14 (Humes Road) interchange**

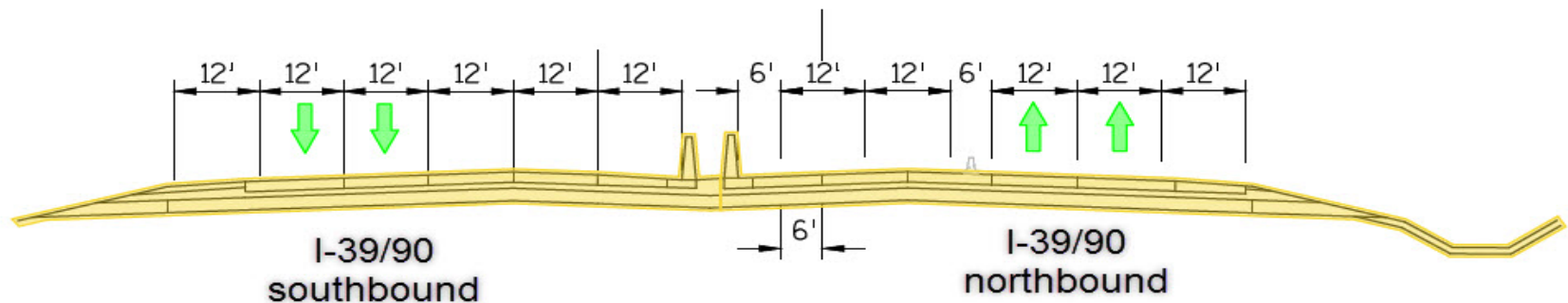


*Note: Dates are subject to change.*

# Interstate Construction Staging:

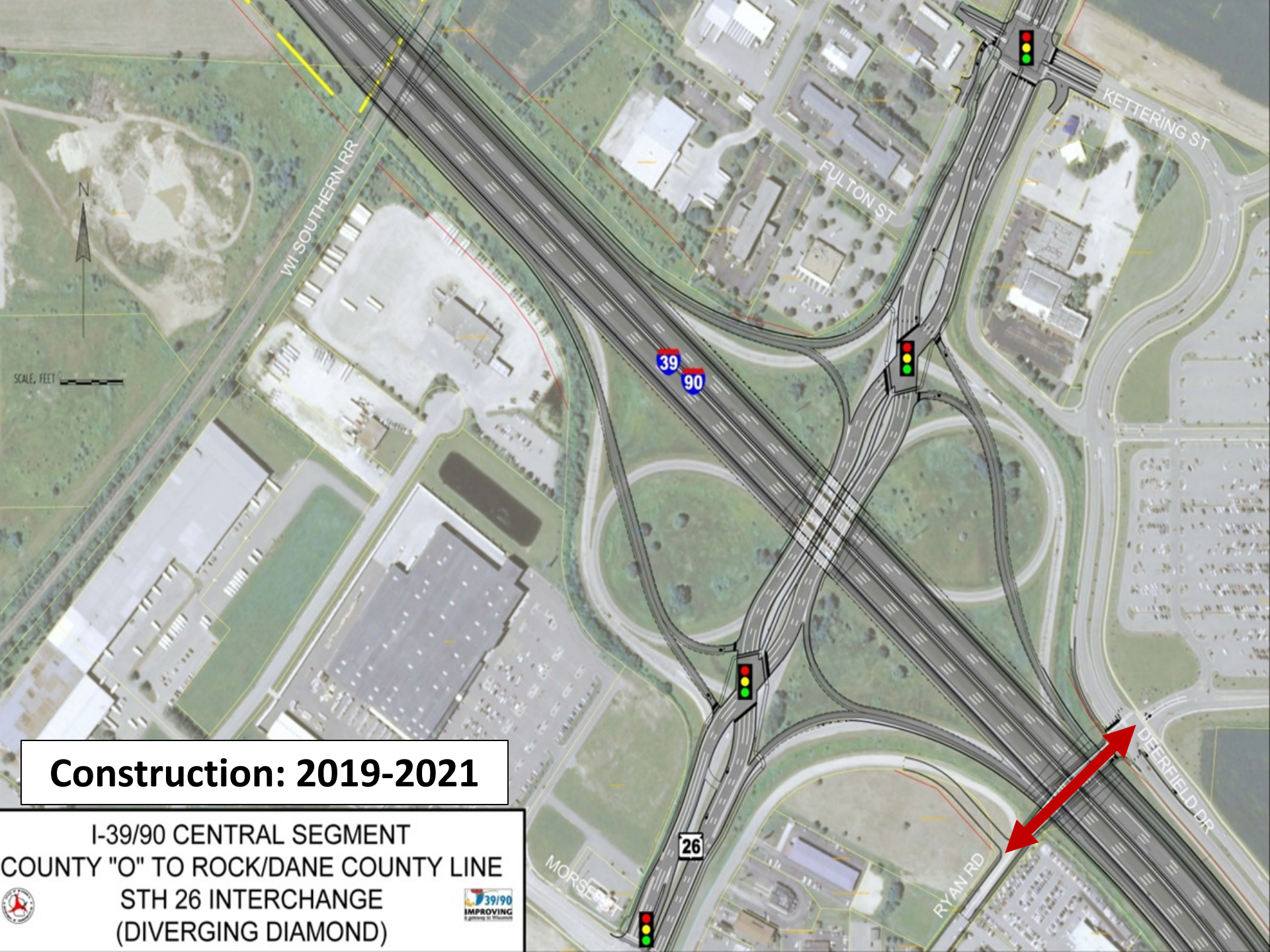
*Fall 2019 – Spring 2020*

**I-39/90 from Hart Road near Beloit north  
to US 14 (Humes Road) interchange**



*Note: Dates are subject to change.*





**Construction: 2019-2021**

I-39/90 CENTRAL SEGMENT  
COUNTY "O" TO ROCK/DANE COUNTY LINE  
STH 26 INTERCHANGE  
(DIVERGING DIAMOND)





# First DDI in Wisconsin

- Wisconsin's first Diverging Diamond Interchange (DDI) opened in November 2016.
  - Built to accommodate the high volume of left turn movements from WIS 11 eastbound to I-39/90 northbound.
- It's safe, efficient and user-friendly!



I-39/90 and WIS 11/Avalon Road interchange, south of Janesville

# Diverging Diamond Interchange

DDIs will be constructed at the following I-39/90 interchanges:

- WIS 11 (Avalon Road), south of Janesville  
*Completed in 2016*
- WIS 26 in Janesville  
*Scheduled to be open in 2021*
- WIS 81 in Beloit  
*Scheduled to be open in 2021*



## What is a DDI?

Interchange where traffic crosses over to the opposite side of the road, with traffic signals at the ramps, to create a free flow left turn movement onto the major highway.

DDI drive-through videos at [www.i39-90.wi.gov](http://www.i39-90.wi.gov) under the Resources tab.



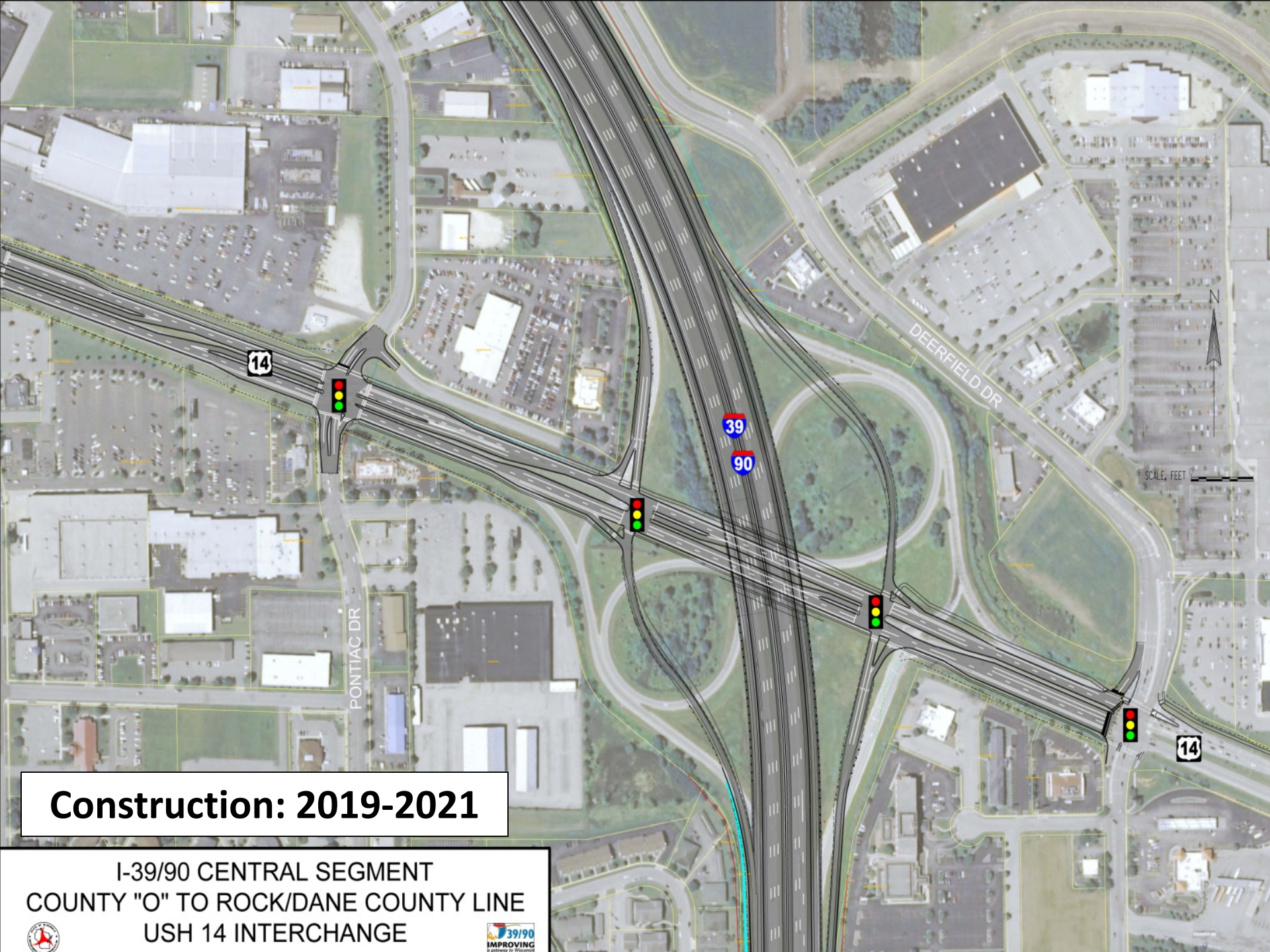
## I-39/90 with Wisconsin Highway 26 Diverging Diamond Interchange (DDI)



- Reconstructed as part of the I-39/90 improvements taking place between now and 2021
- Located in Janesville, the existing interchange has a partial cloverleaf configuration.







14

39

90

DEERFIELD DR

PONTIAC DR

SCALE: FEET

14

**Construction: 2019-2021**

I-39/90 CENTRAL SEGMENT  
COUNTY "O" TO ROCK/DANE COUNTY LINE  
USH 14 INTERCHANGE





# Noise barriers

- **I-39/90 northbound** between the US 14 and WIS 11/Racine Street interchanges is mostly complete.
  - The remaining sections of noise barrier from Randolph Road to US 14 will be extended this year or 2020.
- **I-39/90 southbound** from US 14 to the WIS 11/Racine Street interchange.
- **Southbound Interstate** near Kennedy Road in 2021.





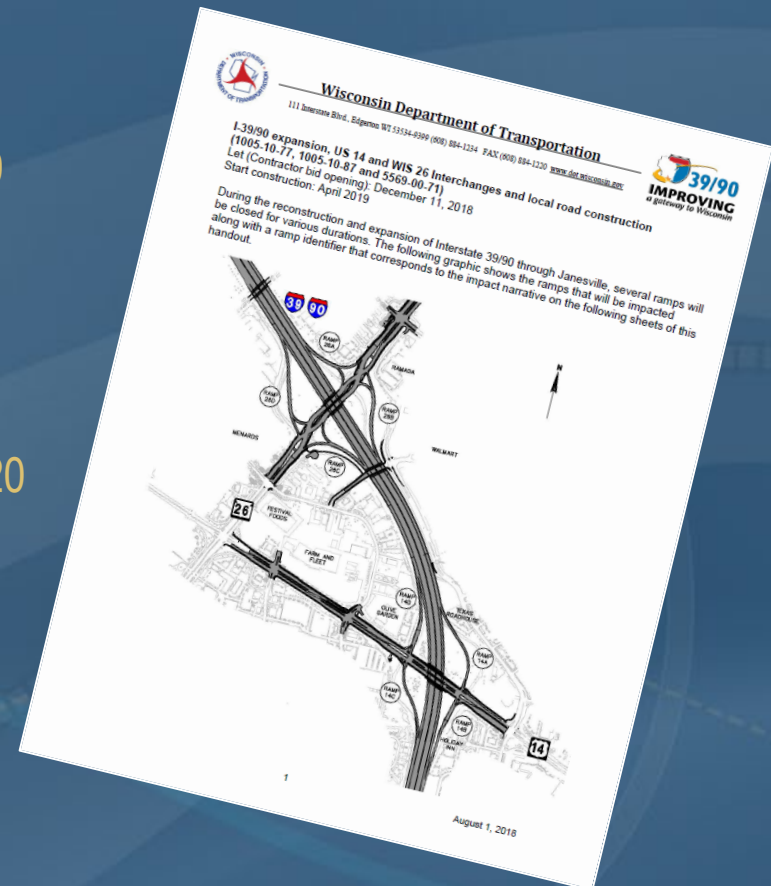
# Interstate Construction Staging:

## *Anticipated ramp closures*

### Major closures:

- WIS 26 to I-39/90 northbound
  - Four (4) month closure in spring/summer 2019
- I-39/90 northbound to WIS 26
  - Three (3) month closure in spring 2020
- US 14 to I-39/90 northbound
  - Three (3) month closure in spring/summer 2020
- WIS 26 ramp to I-39/90 southbound
  - 10 month closure from fall 2020 to fall 2021
- I-39/90 southbound to WIS 26
  - Six (6) weeks in summer 2021

*Note: This list does not include all ramp closures.*



# Interstate Construction Staging:

## *Anticipated road closures*

### Major closures in 2019:

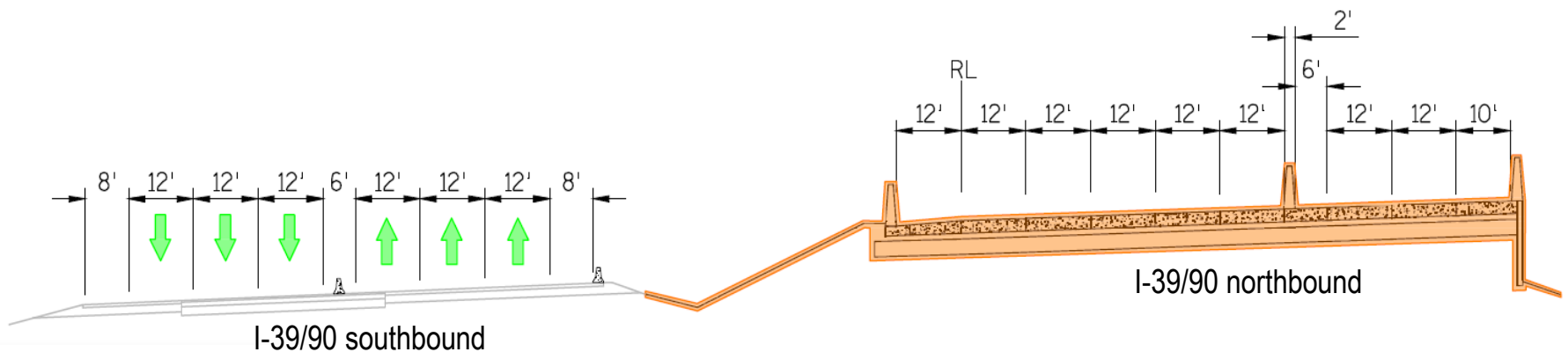
- **WIS 26** will be closed under the Interstate for three nights between mid-April and early May 2019.
- **US 14** under I-39/90 is anticipated to be closed for three nights in mid to late May 2019.
- **Kennedy Road** will be closed under the Interstate for three to four months starting in early April 2019.
  - The **Ice Age Trail** adjacent to Kennedy Road under I-39/90 will be closed from April 2019 to 2021 during the reconstruction work.
- Alternate local routes are required during these closures.



# Interstate Construction Staging:

*Spring 2019 – Summer 2020*

## I-39/90 between US 14 (Humes Rd.) and WIS 26 interchanges



**Crossover for all I-39/90 traffic onto southbound side located prior to WIS 26 and US 14 interchanges.**

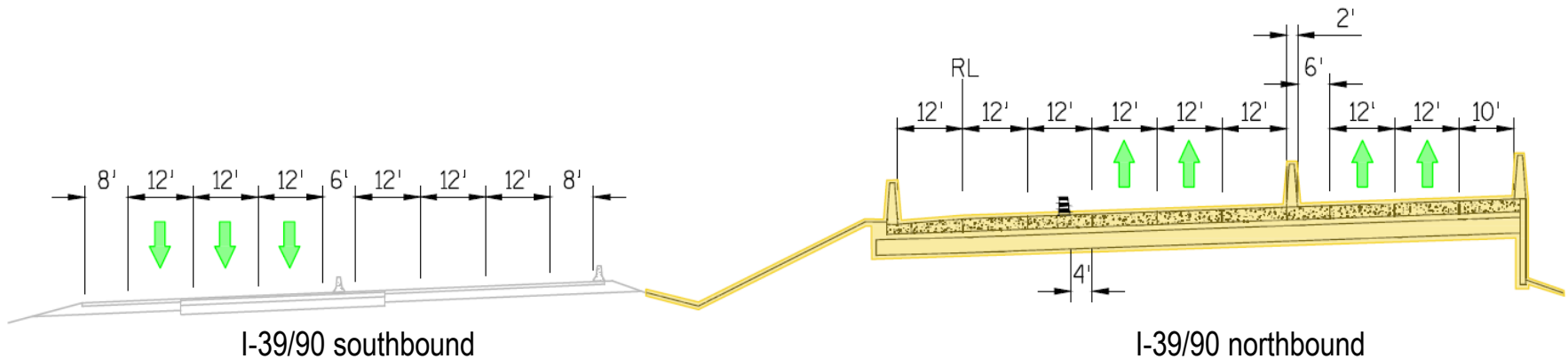
*Note: Dates are subject to change.*



# Interstate Construction Staging:

*Late summer/early fall 2020*

## I-39/90 between US 14 (Humes Rd.) and WIS 26 interchanges

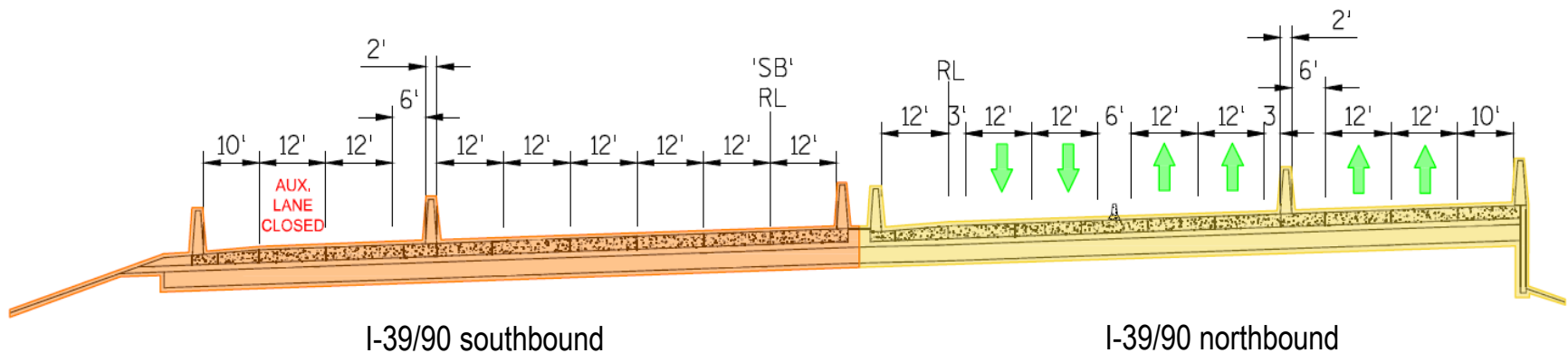


*Note: Dates are subject to change.*

# Interstate Construction Staging:

*Fall 2020 – Early Fall 2021*

## I-39/90 between US 14 (Humes Rd.) and WIS 26 interchanges

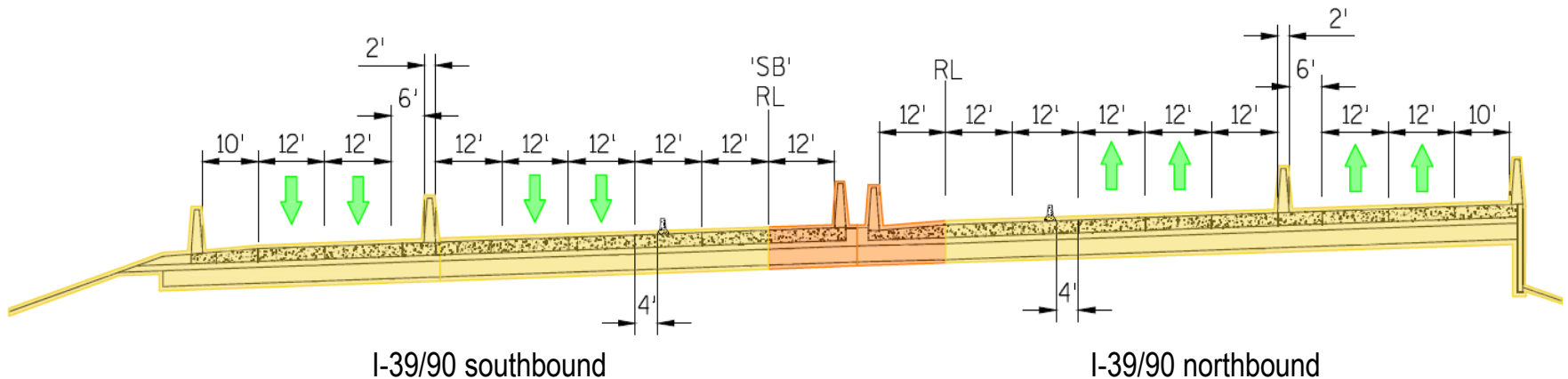


*Note: Dates are subject to change.*

# Interstate Construction Staging:

*Fall 2021*

## I-39/90 between US 14 (Humes Rd.) and WIS 26 interchanges



*Note: Dates are subject to change.*

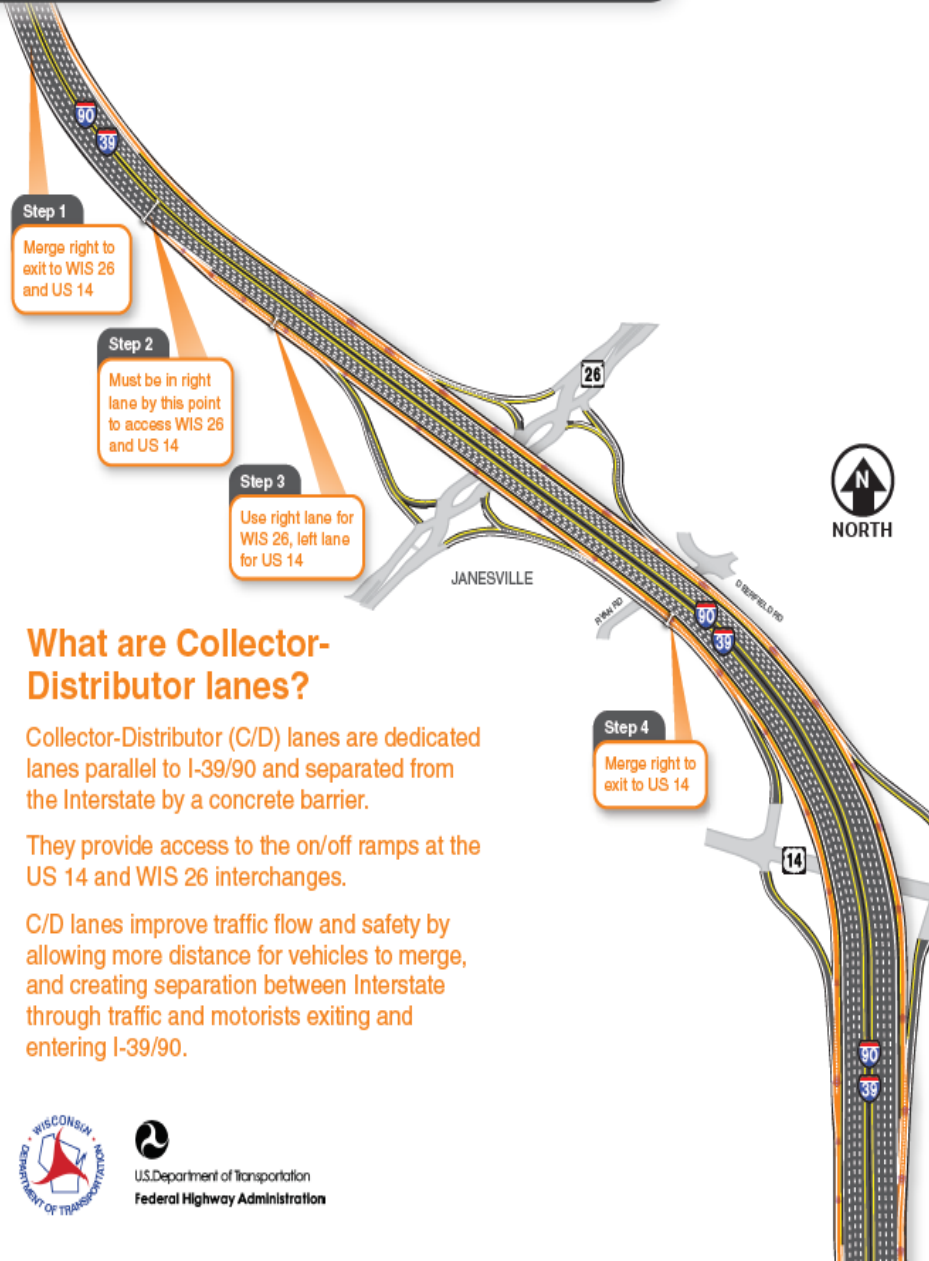


# Final configuration of I-39/90 at WIS 26 and US 14 interchanges

## ● JANESVILLE EXIT RAMP DECISION POINTS



## MADISON TO JANESVILLE: FUTURE ACCESS FROM I-39/90 TO WIS 26 AND US 14 JANESVILLE, WISCONSIN



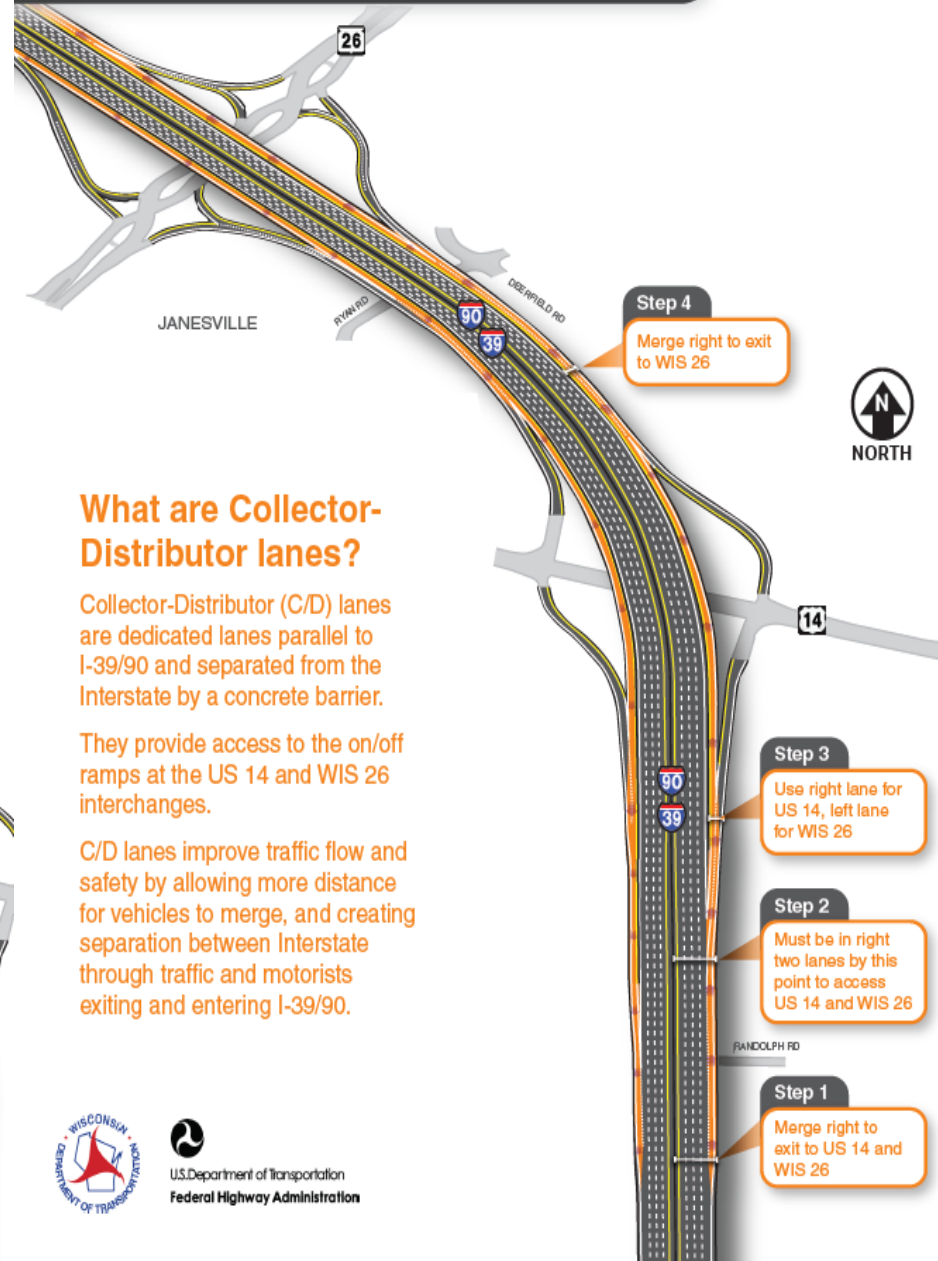
### What are Collector-Distributor lanes?

Collector-Distributor (C/D) lanes are dedicated lanes parallel to I-39/90 and separated from the Interstate by a concrete barrier.

They provide access to the on/off ramps at the US 14 and WIS 26 interchanges.

C/D lanes improve traffic flow and safety by allowing more distance for vehicles to merge, and creating separation between Interstate through traffic and motorists exiting and entering I-39/90.

## BELOIT TO JANESVILLE: FUTURE ACCESS FROM I-39/90 TO US 14 AND WIS 26 JANESVILLE, WISCONSIN



### What are Collector-Distributor lanes?

Collector-Distributor (C/D) lanes are dedicated lanes parallel to I-39/90 and separated from the Interstate by a concrete barrier.

They provide access to the on/off ramps at the US 14 and WIS 26 interchanges.

C/D lanes improve traffic flow and safety by allowing more distance for vehicles to merge, and creating separation between Interstate through traffic and motorists exiting and entering I-39/90.

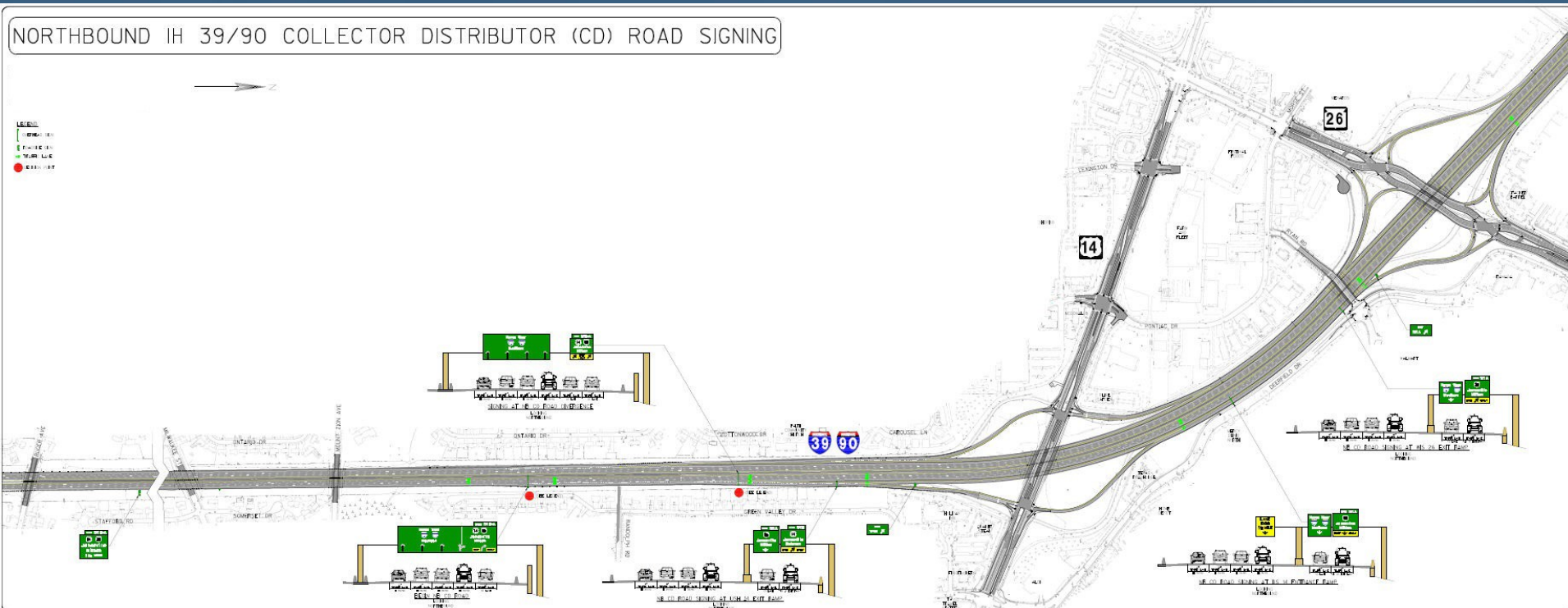


U.S. Department of Transportation  
Federal Highway Administration



U.S. Department of Transportation  
Federal Highway Administration

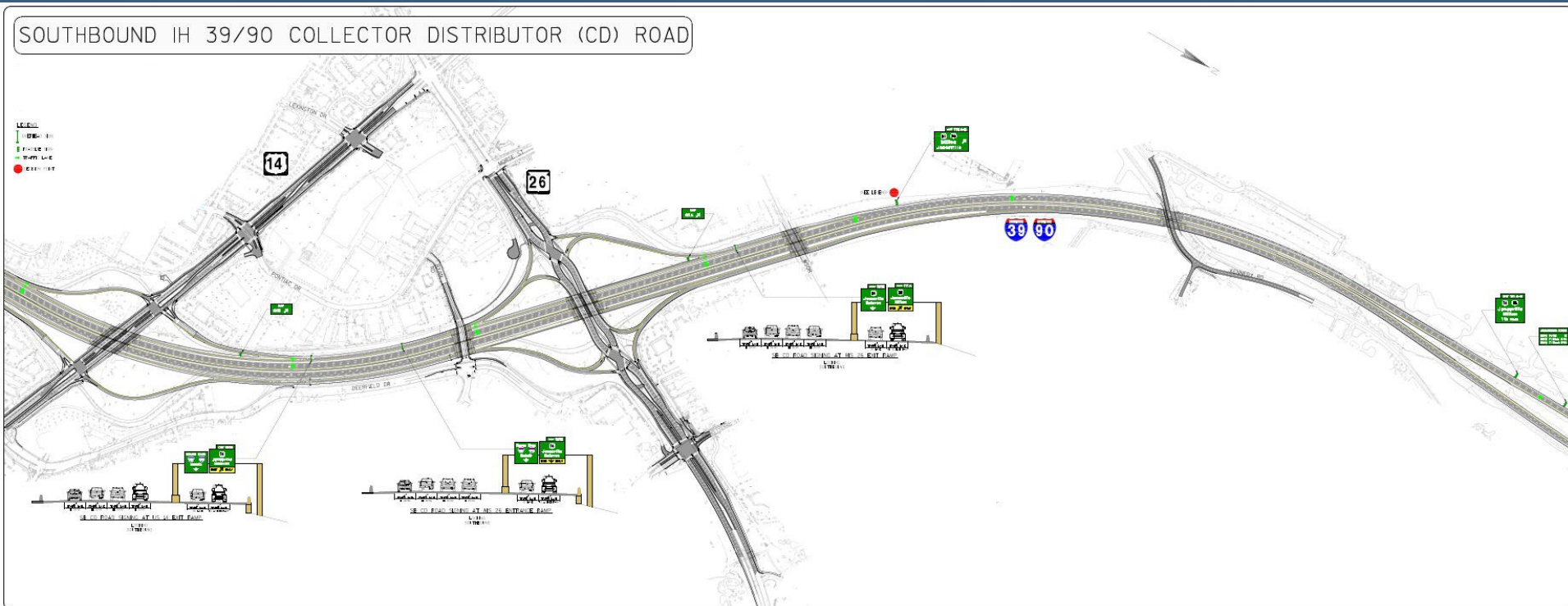
# I-39/90 northbound to WIS 26 and US 14 interchanges



Northbound ramp configuration anticipated to open fall 2020



# I-39/90 southbound to WIS 26 and US 14 interchanges



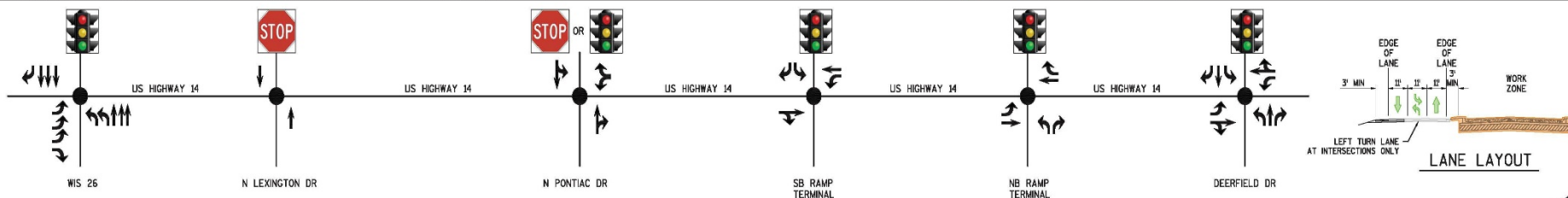
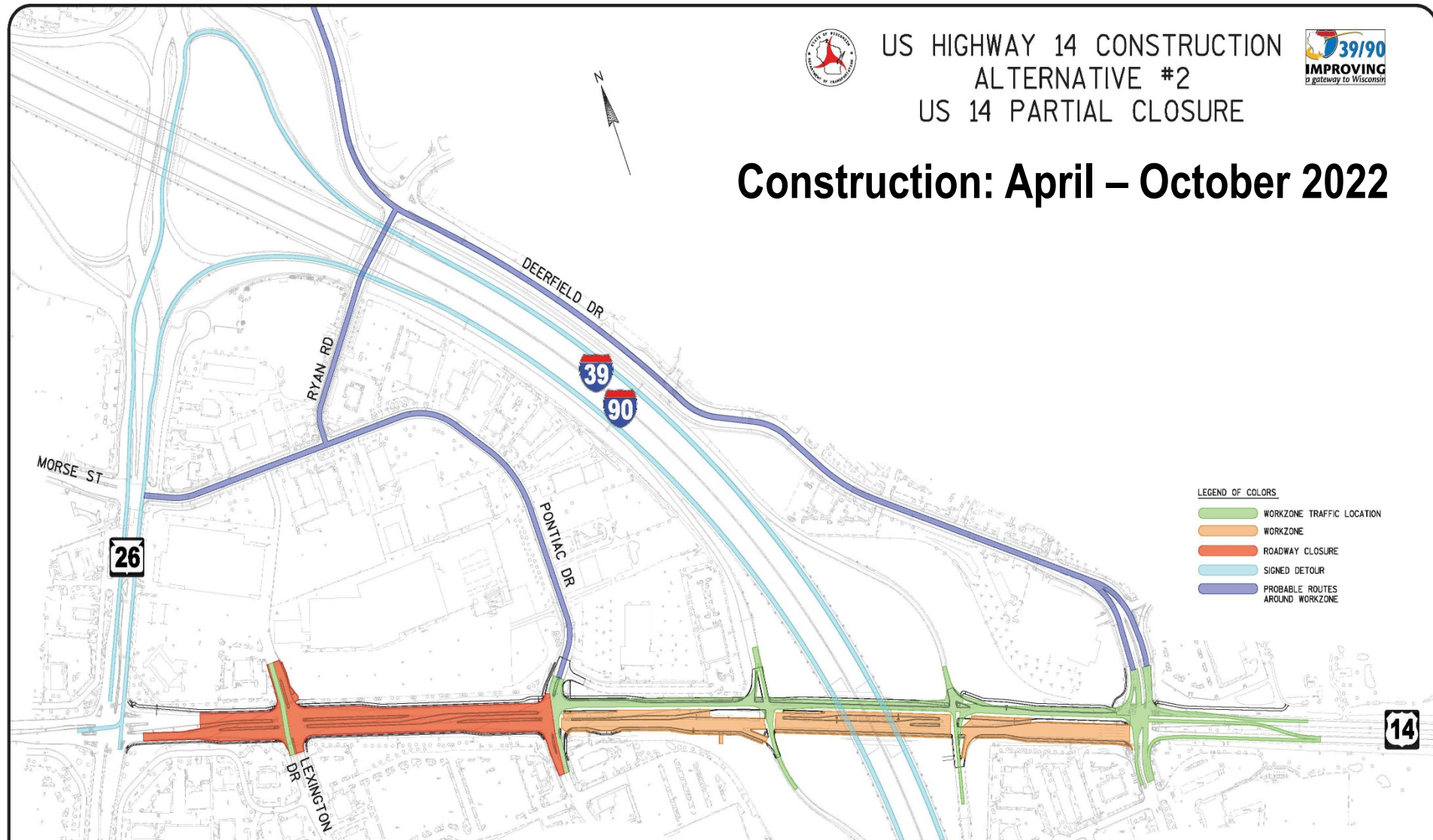
Southbound ramp configuration anticipated to open fall 2021



# US HIGHWAY 14 CONSTRUCTION ALTERNATIVE #2 US 14 PARTIAL CLOSURE



## Construction: April – October 2022



# Business promotion on I-39/90 website

## I-39/90 Expansion Project

Illinois state line to Madison, Dane and Rock counties

OVERVIEW

SCHEDULE

PROJECT SEGMENTS ▾

MAP

CLOSURES

NEWS

RESOURCES

SIGN UP FOR UPDATES

CONTACTS

### Businesses in the work zone

**PROMOTE YOUR BUSINESS DURING CONSTRUCTION**

Is your business located within a current project work zone related to the I-39/90 Expansion Project? If so, help your business not only survive, but thrive, during construction. Promote your business by uploading your business information to our website. (Please allow 1-3 business days for information to be added.)

Submit your business information.

Download the "In This Together" workbook for tips and tools to help your business during construction.

Step 3

**BUSINESSES LOCATED ALONG I-39/90 AND RELATED PROJECTS' WORK ZONES**

Regardless of any roadwork inconvenience, please continue to patronize area businesses in all work zones.

NOTE: All external hyperlinks are provided for your information and for the benefit of the general public. The Wisconsin Department of Transportation does not testify to, sponsor or endorse the accuracy of the information provided on externally linked pages.

RESOURCES

Step 2

- "In This Together" program
  - Businesses in the work zone
- Brochures and newsletters
- Rock County Stakeholder Advisory Committee
- I-39/90 Project construction videos
- Diverging Diamond Interchange
  - WIS 26 (Milton Avenue) Interchange
  - WIS 11 (Avalon Road) Interchange
  - WIS 81 Interchange
- Roundabouts
  - County N Interchange
  - WIS 59 Interchange
  - WIS 11 (Racine St.) Interchange
- Environmental
  - US 12/18 (Beltline) Interchange
  - I-43/WIS 81 Interchange
  - Noise barriers



# Business Coordination

**Gale Price** | [priceg@ci.janesville.wi.us](mailto:priceg@ci.janesville.wi.us)

City of Janesville economic development director

**Christine Rebout** | [director@janesvillecvb.com](mailto:director@janesvillecvb.com)

Executive Director, Janesville Area Convention and Visitors Bureau

**Dan Cunningham** | [DanC@forwardjanesville.com](mailto:DanC@forwardjanesville.com)

Vice President with Forward Janesville



Regardless of any roadwork inconvenience, please continue to patronize area businesses within the work zone.

# Stay connected!

## I-39/90 Expansion Project

Illinois state line to Madison, Dane and Rock counties



OVERVIEW

SCHEDULE

PROJECT SEGMENTS ▶

MAP

CLOSURES

NEWS

RESOURCES


SIGN UP FOR UPDATES

CONTACTS

### Overview

Welcome to the official WisDOT website for the I-39/90 Expansion Project in south-central Wisconsin.

Stay informed and involved with the project:

- Sign up for project email updates!
- Follow the Project Facebook page! 

Thank you for your patience as we "improve a gateway to Wisconsin!"

FULL OVERVIEW

facebook



Wisconsin I-39/90 Project  
@WisconsinI3990Project

Home

About

Sign Up for Updates

Photos

Videos

Posts

Events

Notes

Reviews

Community



Sign Up

Send Message

Photos



Search for posts on this Page

Government Organization in Edgerton, Wisconsin  
4.7 ★★★★★

Be patient.  
Don't tailgate.  
Pay attention.

WISCONSIN ROAD CONSTRUCTION SEASON  
ABOUT WISCONSIN I-39/90 PROJECT

I-39/90 Expansion Project

Learn about the I-39/90 Project in south-central Wisconsin. Simply visit [www.i39-90.wi.gov](http://www.i39-90.wi.gov)

I-39/90 Project website  
[www.i39-90.wi.gov](http://www.i39-90.wi.gov)

Project Facebook page  
[Facebook.com/WisconsinI3990Project](https://Facebook.com/WisconsinI3990Project)

# Project Contacts



**Emmanuel Yartey, P.E.**

Construction Project Manager  
(Janesville area)  
(608) 516-6541  
[emmanuel.yartey@dot.wi.gov](mailto:emmanuel.yartey@dot.wi.gov)

**Mark Sponem, P.E.**

Corridor Construction  
Project Manager  
(608) 884-1174  
[mark.sponem@dot.wi.gov](mailto:mark.sponem@dot.wi.gov)

**Rich Cannon, P.E.**

Project Supervisor  
(608) 884-1160  
[richard.cannon@dot.wi.gov](mailto:richard.cannon@dot.wi.gov)

**John Vesperman, P.E.**

Project Chief  
(608) 884-1221  
[john.vesperman@dot.wi.gov](mailto:john.vesperman@dot.wi.gov)

**Steven Theisen**

Project Communications Manager  
(608) 884-1230  
[steven.theisen@dot.wi.gov](mailto:steven.theisen@dot.wi.gov)



# Questions?