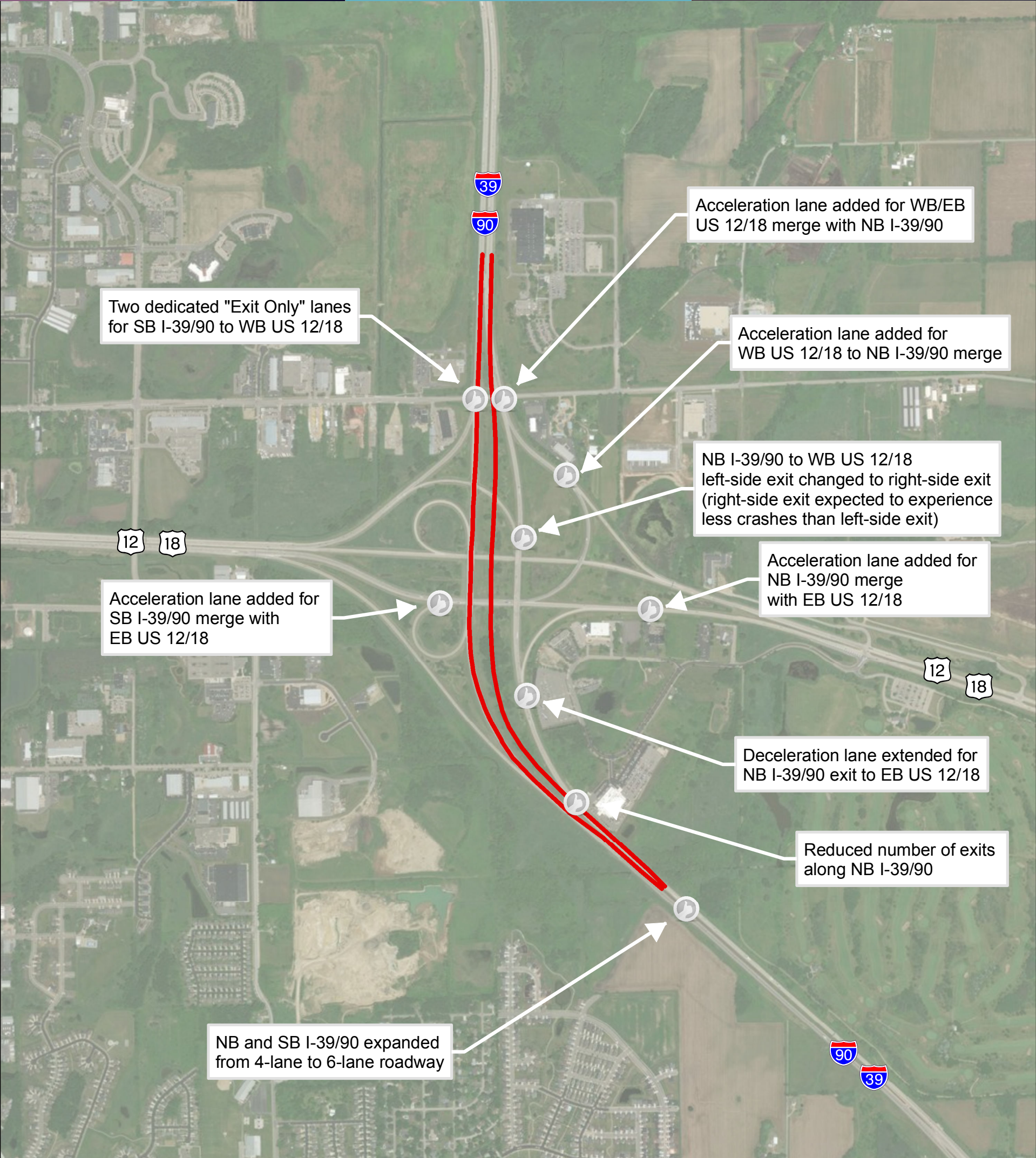


BELTLINE INTERCHANGE

BETWEEN 2011  
TO 2015....  
THERE WERE  
650 CRASHES  
INCLUDING 4 FATALITIES  
DURING THIS PERIOD

ONE CRASH  
EVERY 3  
DAYS  
(2.5 CRASHES EVERY WEEK)

EVERY 17 DAYS,  
SOMEONE IS  
INJURED IN A  
CRASH



Potential Alternative Improvement

- Potential Improvement
- Proposed I-39/90 Alignment
- NB = Northbound SB = Southbound
- EB = Eastbound WB = Westbound

Project Team is continuing to evaluate potential safety improvements of the 2-lane and 3-lane alternatives

High Crash Rate Areas with Potential Improvements

I-39/90 at US 12/18 (Beltline Interchange)

WisDOT ID: 1007-10-02

