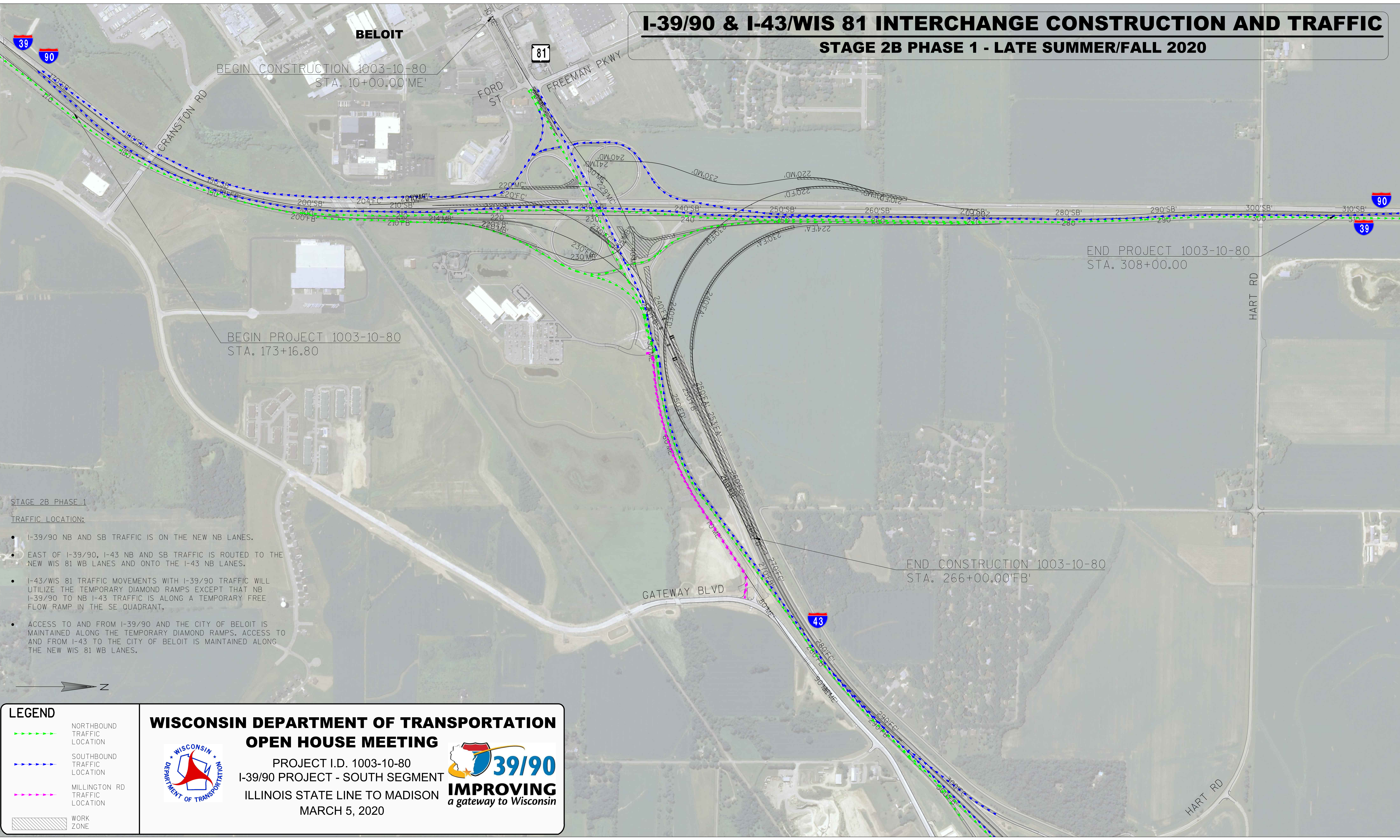


# I-39/90 & I-43/WIS 81 INTERCHANGE CONSTRUCTION AND TRAFFIC

## STAGE 2B PHASE 1 - LATE SUMMER/FALL 2020



- STAGE 2B PHASE 1  
TRAFFIC LOCATION:
- I-39/90 NB AND SB TRAFFIC IS ON THE NEW NB LANES.
  - EAST OF I-39/90, I-43 NB AND SB TRAFFIC IS ROUTED TO THE NEW WIS 81 WB LANES AND ONTO THE I-43 NB LANES.
  - I-43/WIS 81 TRAFFIC MOVEMENTS WITH I-39/90 TRAFFIC WILL UTILIZE THE TEMPORARY DIAMOND RAMPS EXCEPT THAT NB I-39/90 TO NB I-43 TRAFFIC IS ALONG A TEMPORARY FREE FLOW RAMP IN THE SE QUADRANT.
  - ACCESS TO AND FROM I-39/90 AND THE CITY OF BELOIT IS MAINTAINED ALONG THE TEMPORARY DIAMOND RAMPS. ACCESS TO AND FROM I-43 TO THE CITY OF BELOIT IS MAINTAINED ALONG THE NEW WIS 81 WB LANES.

### LEGEND

- NORTHBOUND TRAFFIC LOCATION
- SOUTHBOUND TRAFFIC LOCATION
- MILLINGTON RD TRAFFIC LOCATION
- WORK ZONE

### WISCONSIN DEPARTMENT OF TRANSPORTATION

#### OPEN HOUSE MEETING

PROJECT I.D. 1003-10-80  
I-39/90 PROJECT - SOUTH SEGMENT  
ILLINOIS STATE LINE TO MADISON  
MARCH 5, 2020

**IMPROVING**  
*a gateway to Wisconsin*