

# I-39/90 Project



North Segment  
September 24, 2012  
LOM: 4:00 – 5:00 p.m.  
PIM: 5:30 – 7:30 p.m.  
McFarland High School

# Introductions

- WisDOT Project Manager – Craig Pringle
- Consultant Project Manager – Jeff Hanson
- Deputy Project Manager – Mike McCarthy
- Deputy Project Manager – Lisa Dreifuerst
- Public Involvement Leader – Darren Fortney

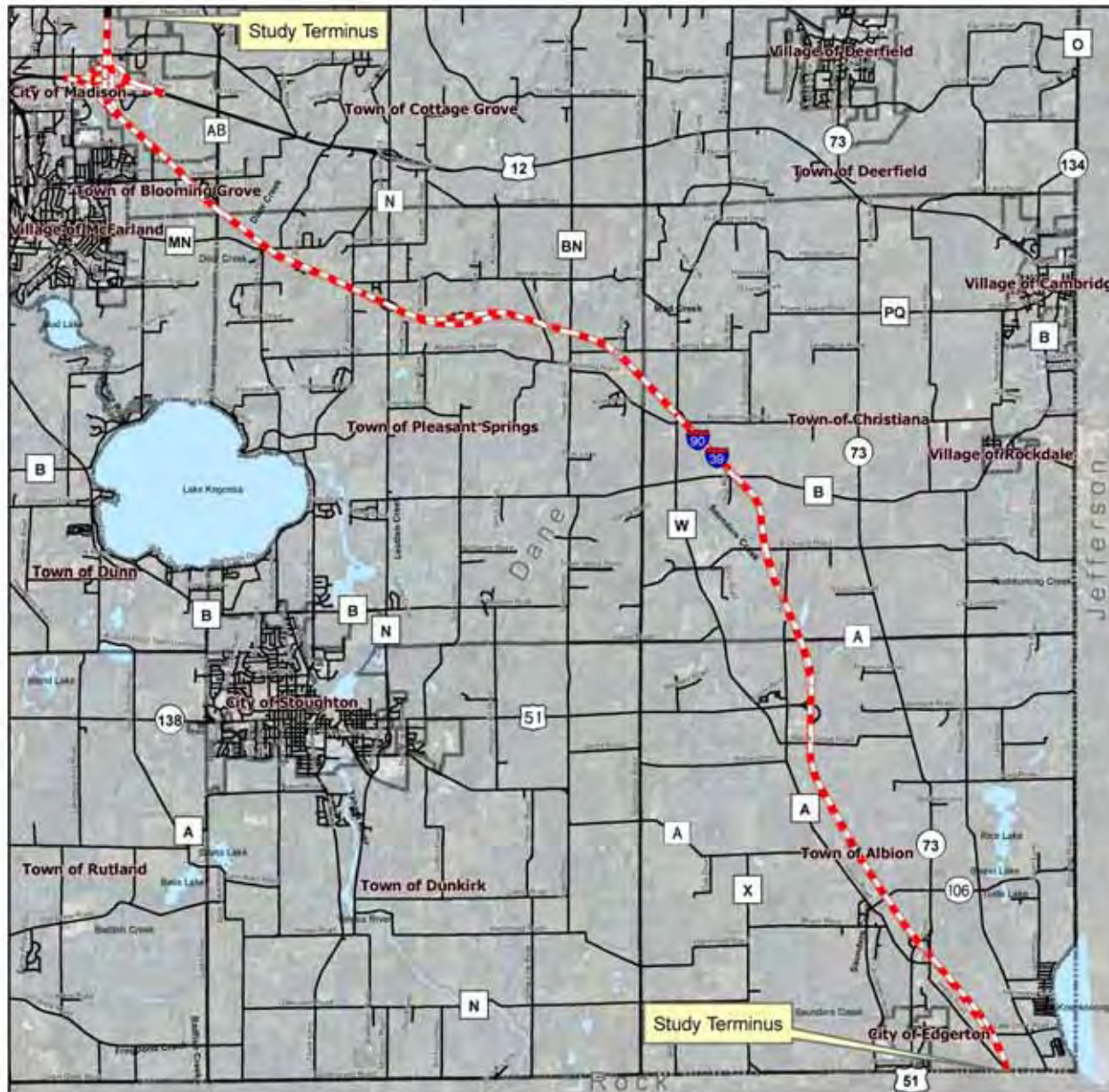
# I-39/90 Project Segments



- North Segment
  - Dane/Rock County Line to US 12/18
- Central Segment
  - County O to Dane/Rock County Line
- South Segment
  - WI/IL Stateline to County O



# North Segment



**39/90**  
IMPROVING  
a gateway to Wisconsin

I-39/90  
Illinois State Line - Madison  
Dane/Rock County Line - US 12/18  
Dane County North Segment

WisDOT ID:  
1007-10-01

**Legend**

- I-39/90
- Roads
- Municipal Boundary
- Water

0 0.5 1 2 Miles  
1 inch equals 1.80 miles



# I-39/90 Importance

- Major transportation corridor
- Gateway for tourism/recreational destinations
- Designated federal truck route, high number of heavy trucks
- I-39/90 provides links to other Interstates and major highways throughout WI and beyond

# Project Background

- Environmental Assessment (EA)
- EA identified and evaluated:
  - Purpose and need of overall project
  - Range of alternatives
  - Potential environmental impacts
- Finding of No Significant Impact (FONSI)  
signed on October 1, 2010





# Purpose and Need

- Meet current design standards
- Improve overall safety
- Accommodate future traffic with an acceptable level of service (LOS)



# Proposed Improvements

- Reconstruction of existing freeway lanes
- Addition of a third lane in each direction to create 6-lane facility
- Reconstruction of interchanges
- Reconstruction of over/underpasses





# Activities To Date

- Wetland delineation
- Soil borings
- Hazardous materials search
- Arch/historic investigations
- Detailed engineering
- Bike/pedestrian planning
- Real estate coordination
- Agency coordination
- Public outreach
- Detailed engineering



# Public Meetings 2012

- Beltline Interchange Stakeholders Meeting – February 7
- Ho-Chunk Nation – March 5 & April 16
- Local Officials & Public Information Meeting – April 24
- WIS 73 Interchange Stakeholders Meeting – August 28
- County N Interchange Stakeholders Meeting –

September 11



# Public Input

- Design team reviewed all public input:
  - Noise barriers
  - Drainage issues
  - Right-of-way acquisition
  - Median width





# Noise Barriers

- Noise analysis conducted during EA process
- Evaluated in accordance with Federal Highway standards and Wis. State Statutes
- Sensitive receptors identified (houses, schools, offices)
- Receptors included in traffic noise model used to predict future sound levels
- There have been some procedural changes to traffic noise model, but no changes to actual law
- Procedural changes reviewed and would not affect outcome of original noise analysis

# Noise Barriers

- Noise model indicated that a noise barrier is not warranted in Dane County
- Building/housing density not enough to justify a noise barrier
- Model indicated barriers may be warranted for portion of Janesville/Beloit area where population is more dense



# Drainage





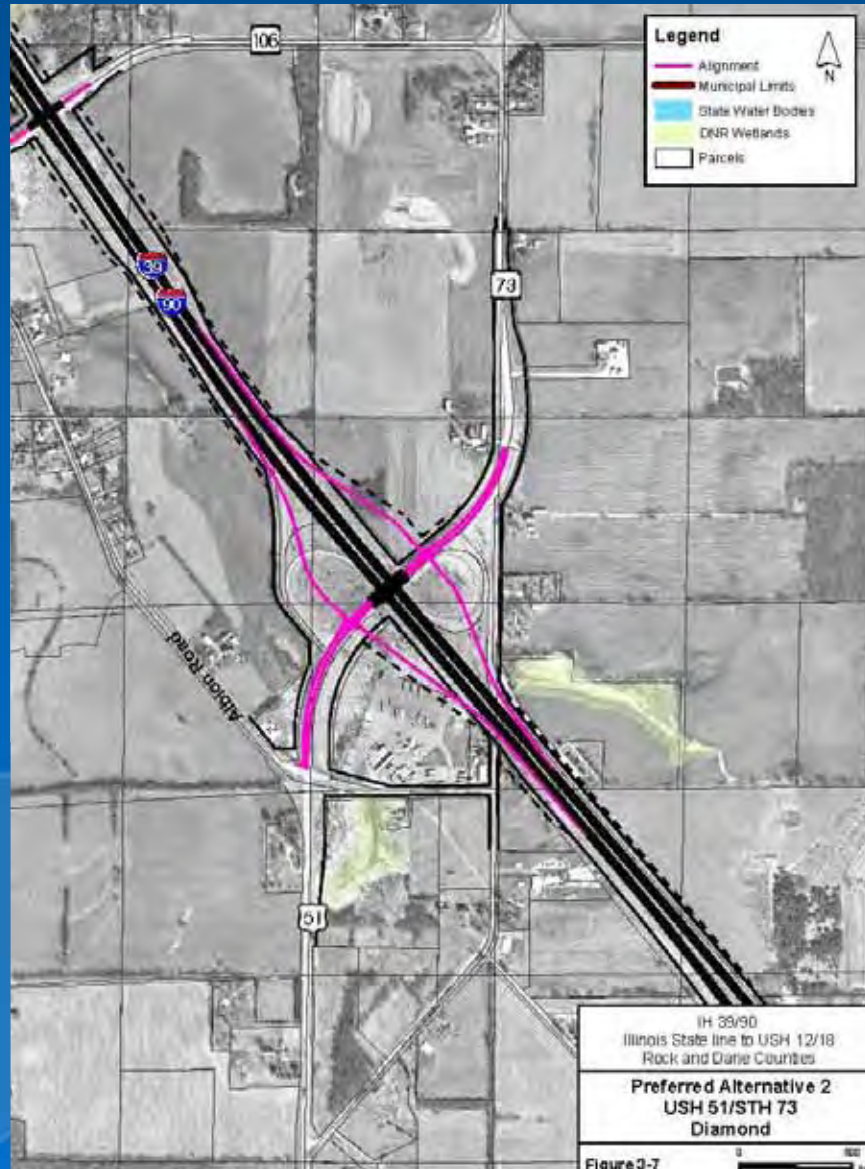
# Right-of-Way Acquisition

- Some right-of-way acquisition required to accommodate addition of a third lane in each direction
- Design teams have refined right-of-way needs
- Reflected on display maps



# Right-of-Way Acquisition

## Exhibit at PIM 1 (EA)

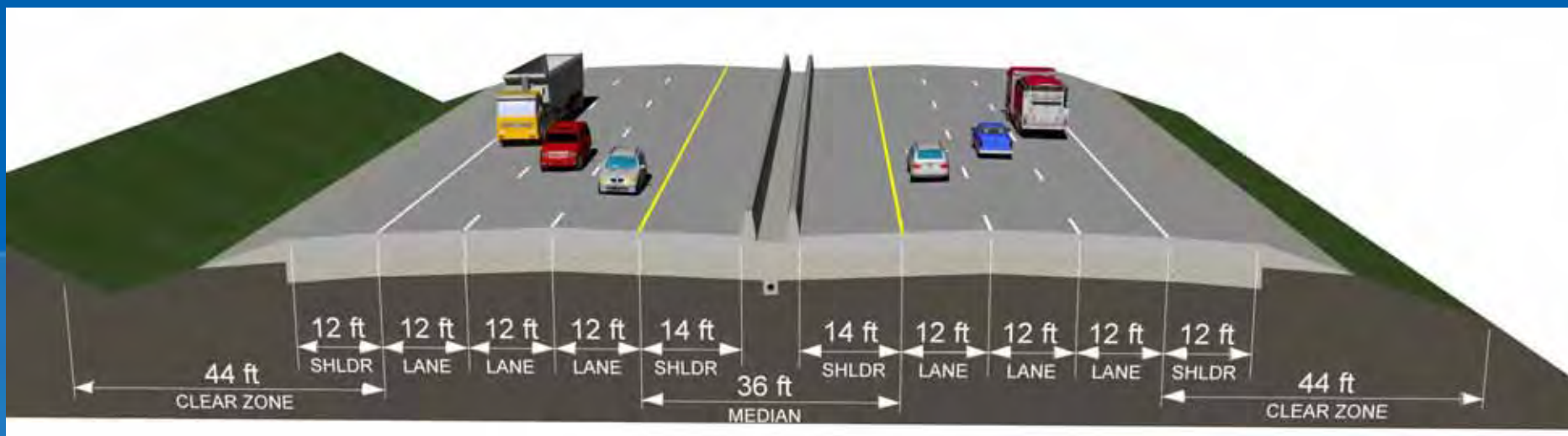
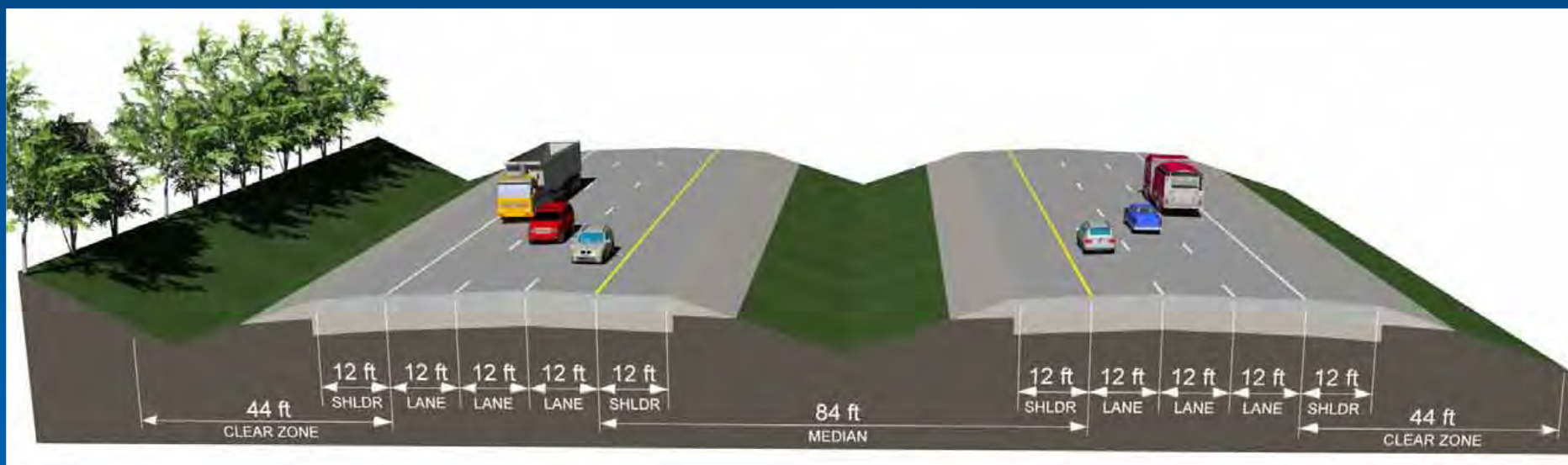


## Revised Exhibits





# Median Width





# Proposed Improvements

- Mainline
- Interchanges
  - US 51/WIS 73
  - US 51
  - County N
  - US 12/18 (Beltline)

# Mainline





# US 51/WIS 73 Interchange





# US 51 Interchange





# County N Interchange: Signal





# County N Interchange: Diverging Diamond





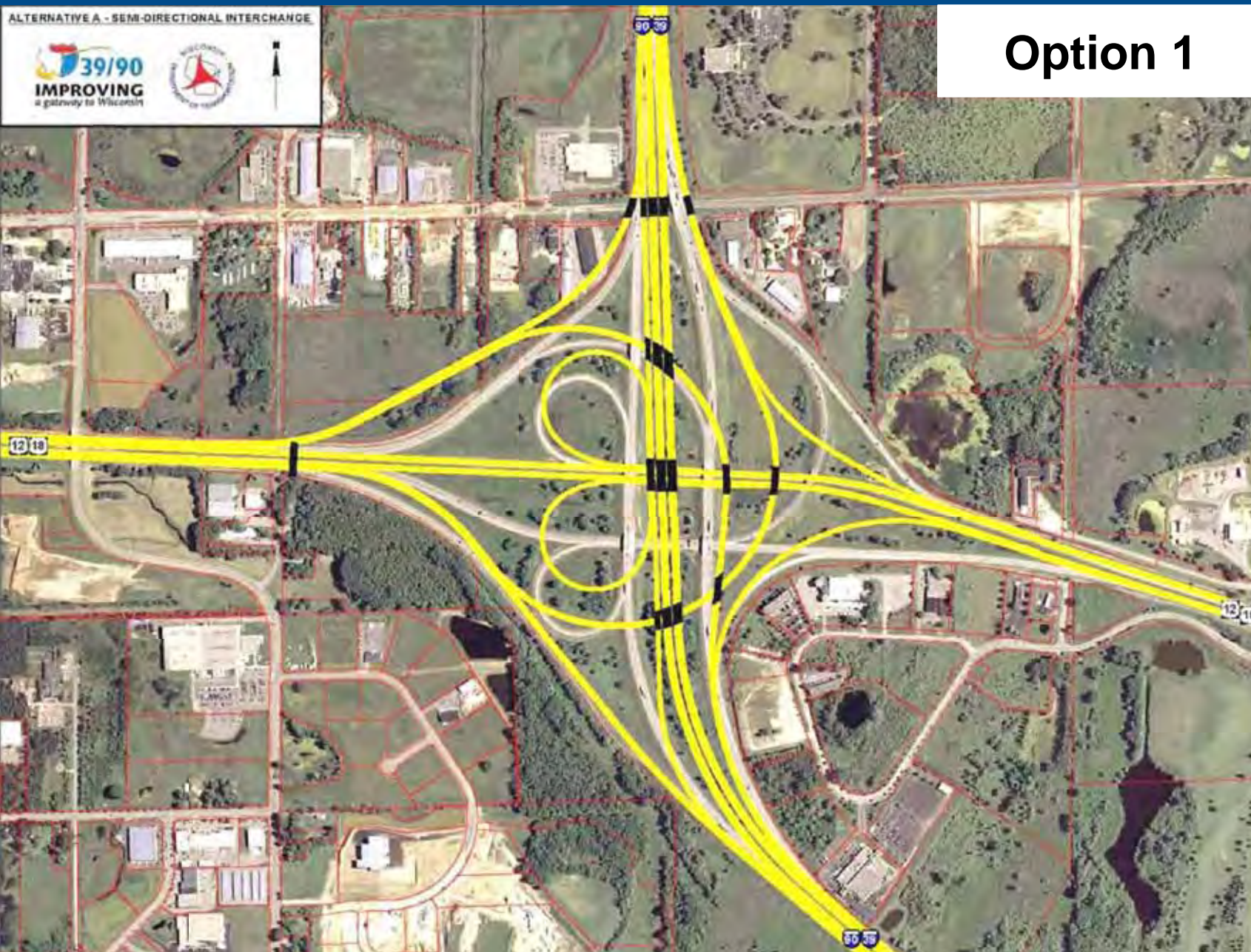
# County N Interchange: Roundabout





# Beltline Interchange

ALTERNATIVE A - SEMI-DIRECTIONAL INTERCHANGE



**Option 1**



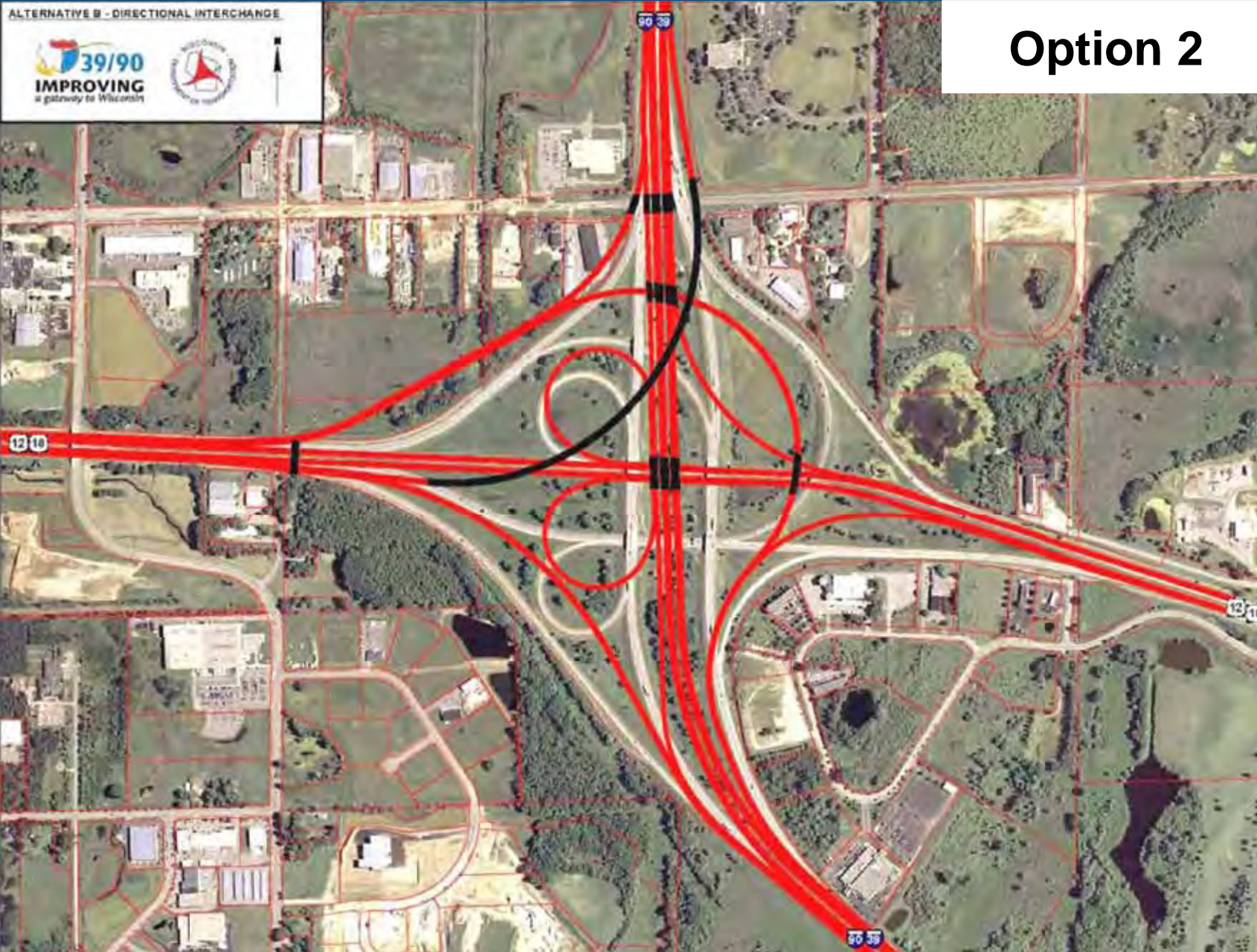


# Beltline Interchange

ALTERNATIVE B - DIRECTIONAL INTERCHANGE



**Option 2**



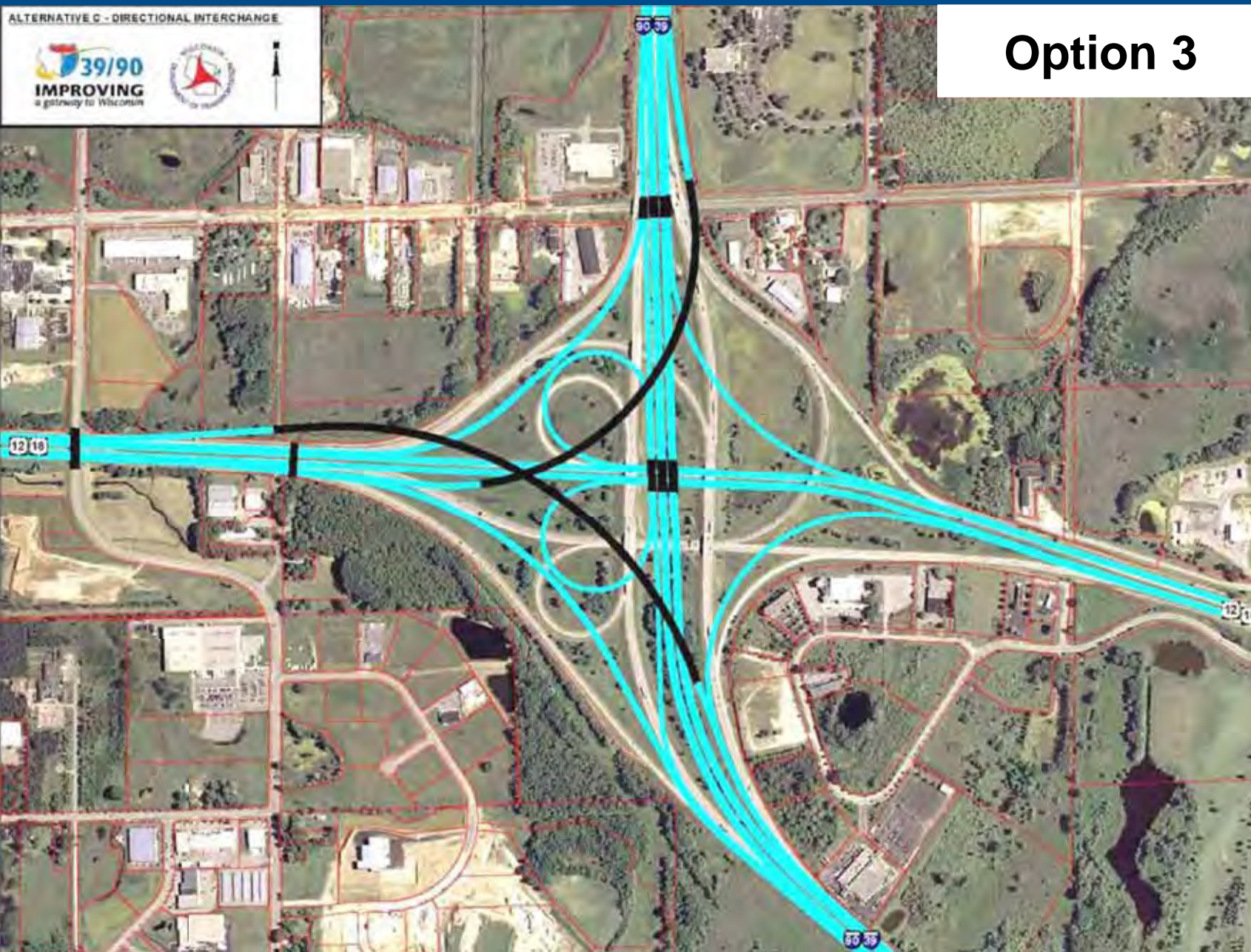


# Beltline Interchange

ALTERNATIVE C - DIRECTIONAL INTERCHANGE



**Option 3**



# Construction

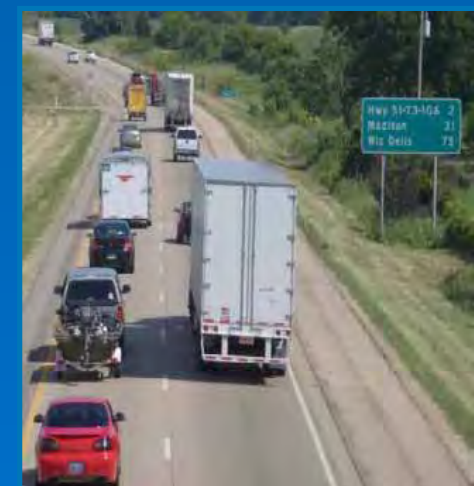
- Likely to occur in segments over several years
- Could begin as early as 2015; completed by 2021
- Dependent on funding and construction staging
- I-39/90 will remain open during construction
- Two lanes in each direction during construction
- Lane restrictions may be needed during off-peak travel hours





# Schedule

- 30% design plans – Summer/Fall 2012
- 60% design plans and Design Study Report (DSR) - Summer 2013
- Environmental Assessment update/Design Refinement Report – Spring/Summer 2013
- Local Official/Public Information Meetings – Spring/Summer 2013
- Additional stakeholder meetings as needed





# Input Exercise

**STEP 1 -** Place number on the map.

**STEP 2 -** Write number and comment on form.



13

14

Place a numbered sticker on the map near the location for which you would like to comment. Write the sticker number in the box below and comment in the adjacent spaces:

12

# Contacts

Craig Pringle

WisDOT Project Manager

608-242-8058

[craig.pringle@dot.wi.gov](mailto:craig.pringle@dot.wi.gov)

Jeff Hanson

Dane Partners Project Manager

608-827-8810

[jhanson@emcsinc.com](mailto:jhanson@emcsinc.com)

Darren Fortney

Public Involvement Leader

Dane Partners

608-620-6191

[dfortney@sehinc.com](mailto:dfortney@sehinc.com)

Mike McCarthy

Deputy Project Manager

Dane Partners

608-827-8810

[mmccarthy@emcsinc.com](mailto:mmccarthy@emcsinc.com)

Lisa Dreifuerst

Deputy Project Manager

Dane Partners

608-243-6478

[ldreifuerst@otie.com](mailto:ldreifuerst@otie.com)

Project website  
[www.i39-90.wi.gov](http://www.i39-90.wi.gov)

Project Facebook  
[www.facebook.com/WisconsinI3990Project](https://www.facebook.com/WisconsinI3990Project)



# Questions?

# I-39/90 Project



North Segment  
September 24, 2012,  
LOM: 4:00 – 5:00 p.m.  
PIM: 5:30 – 7:30 p.m.  
McFarland High School