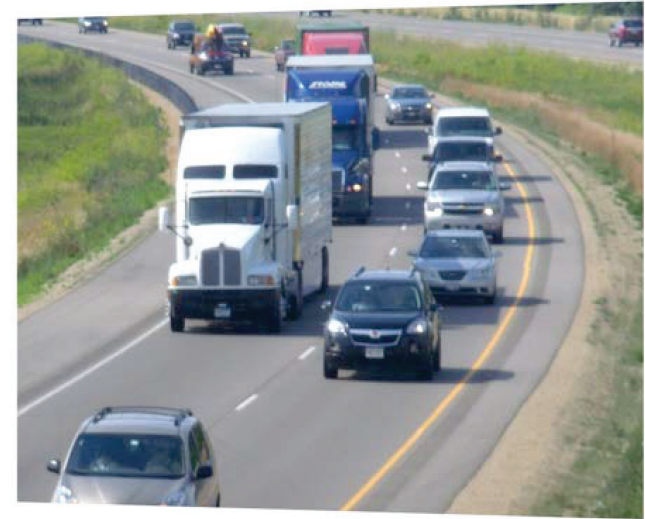
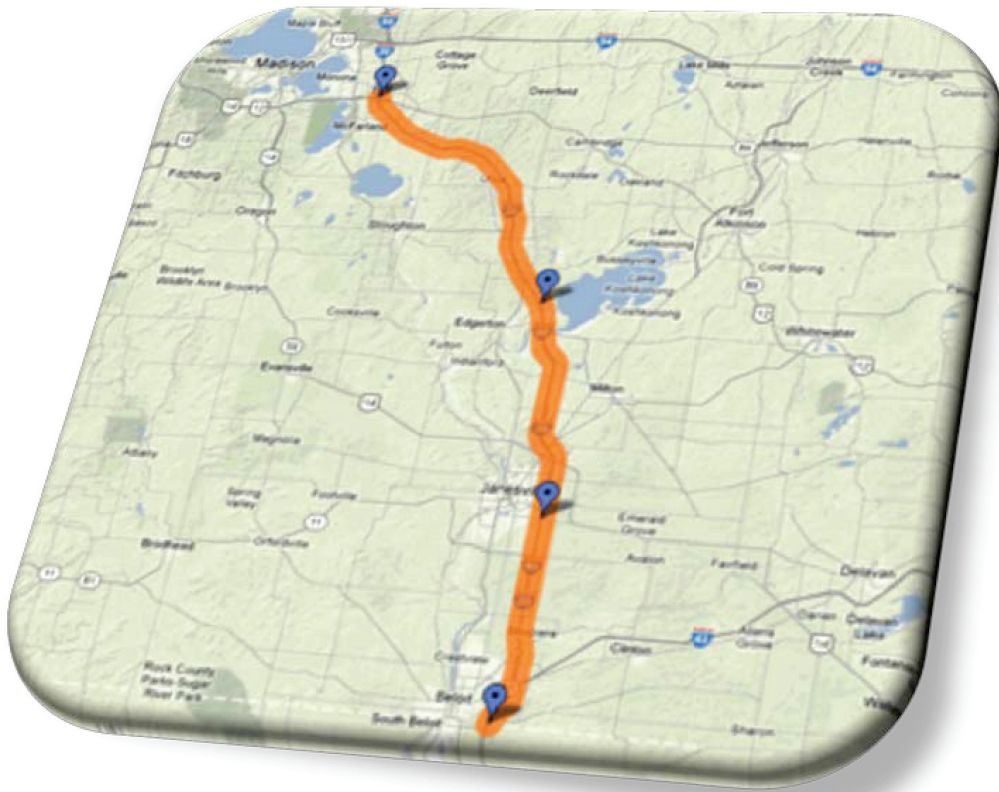


I-39/90 Expansion Project



Business Involvement Meeting
March 19, 2015 3 p.m. to 6 p.m.
Janesville, Wisconsin

I-39/90 Project Corridor



- Illinois State Line to US 12/18
- Approximately 45 Miles
- Major Transportation Corridor
 - People
 - Commerce
 - Tourism

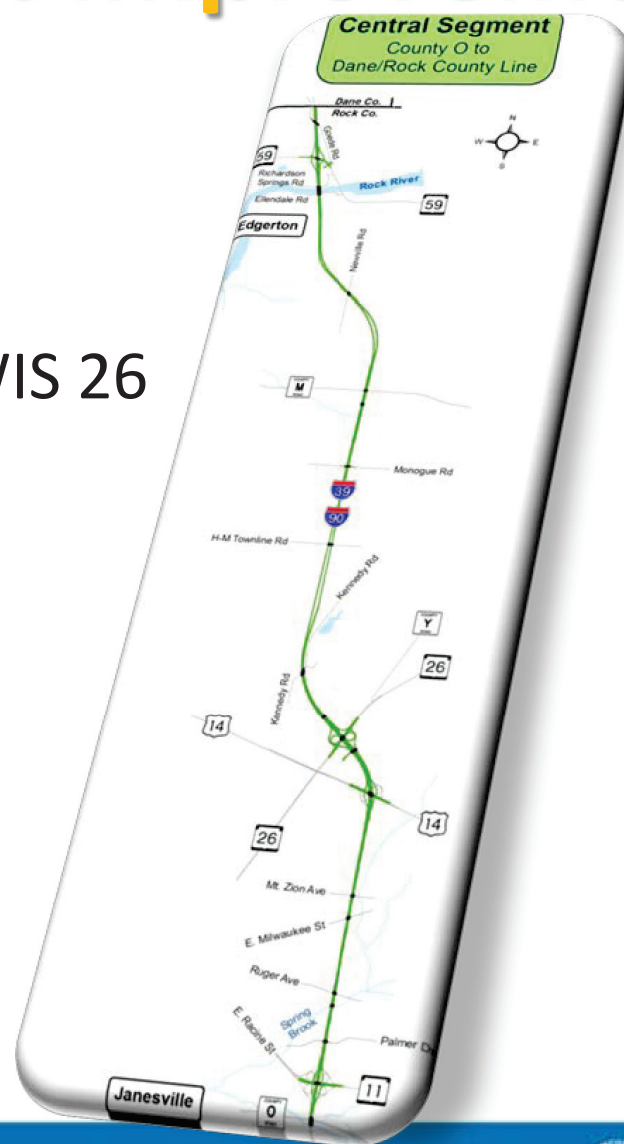
I-39/90 Central Segment

- County O to Dane/Rock County Line



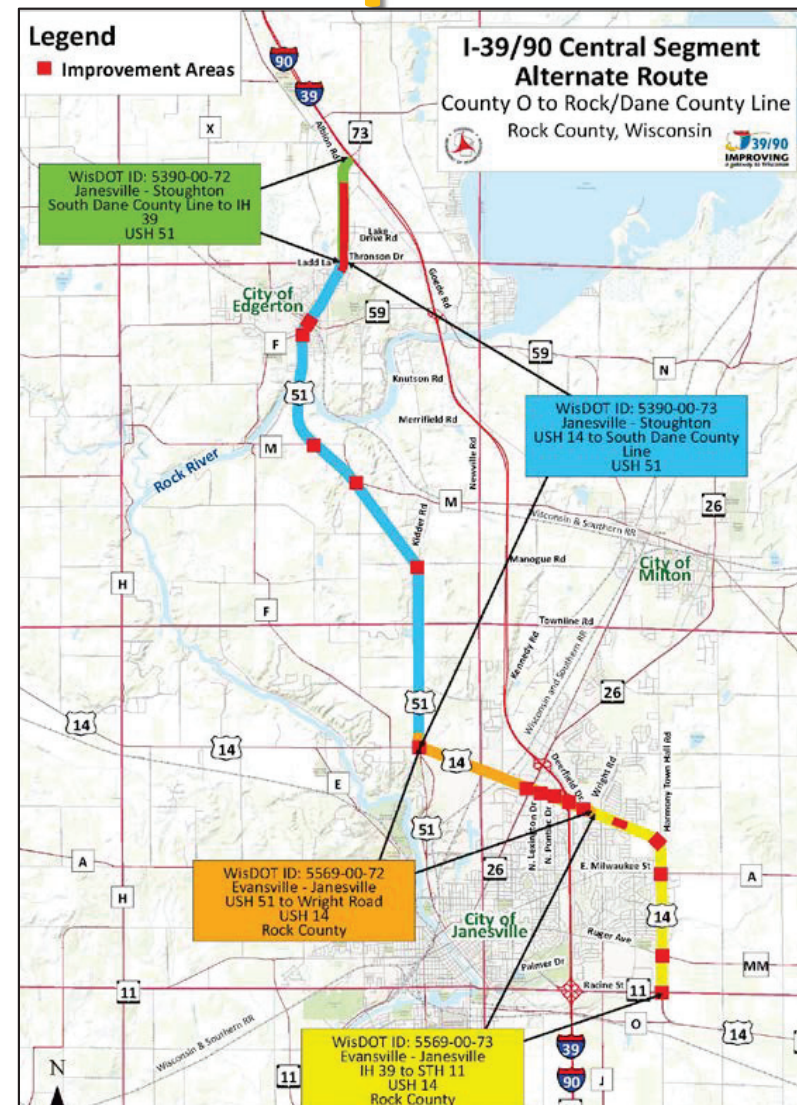
I-39/90 Central Segment Improvements

- 8-lanes County O to WIS 26
- 6-lanes WIS 26 to Dane/Rock Co. Line
- Collector/Distributor Roads at US14/WIS 26
- Bridges Reconstructed
- Bike & Pedestrian Accommodations
- US 14/US 51 Alternate Route
- Noise Barriers
- Construction 2013 through 2020



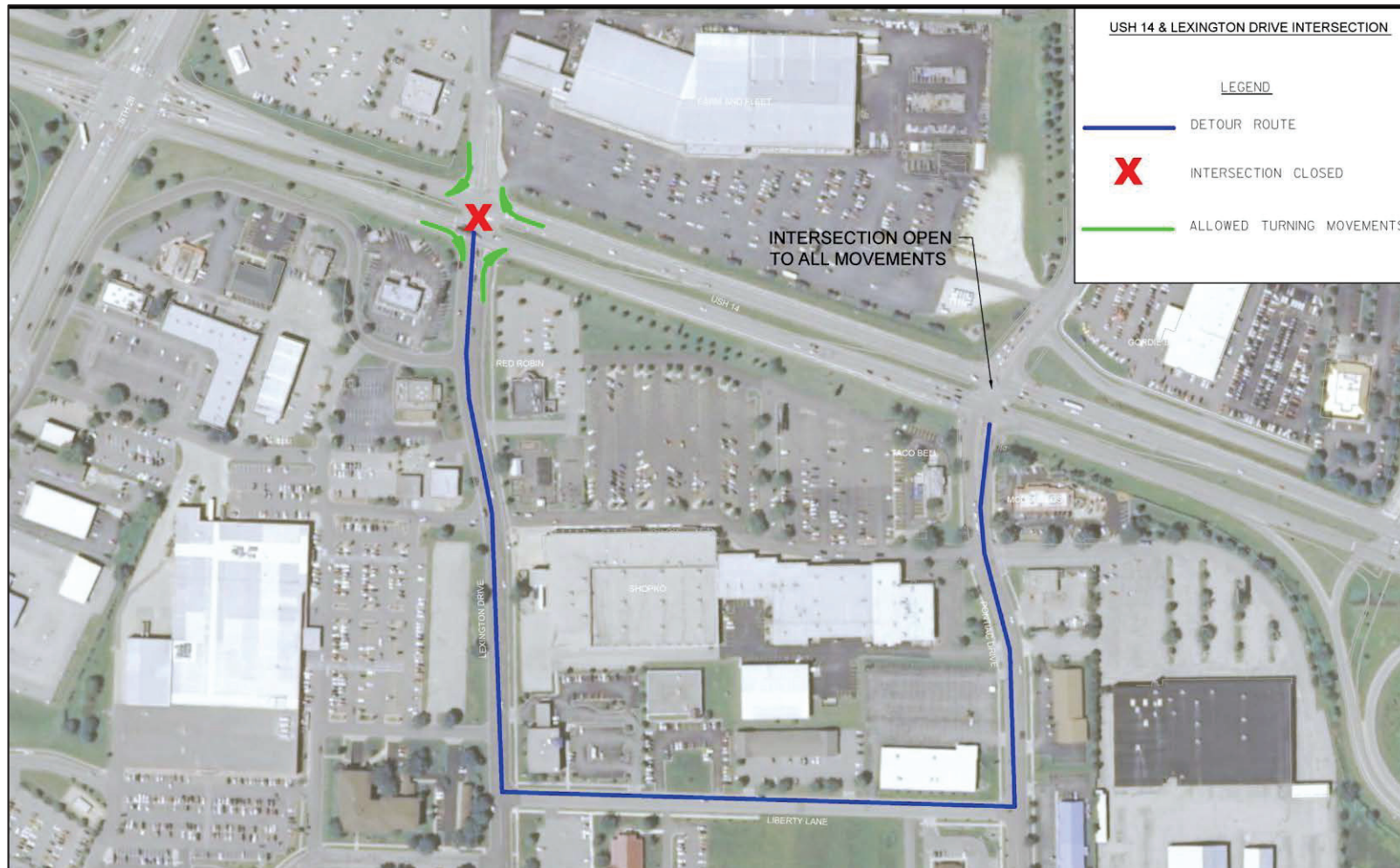
I-39/90 Alternate Route Improvements

- US 14 to US 51 to WIS 73
- Construction year 2015



I-39/90 Alternate Route Improvements

- US 14 - Lexington Drive Intersection Construction



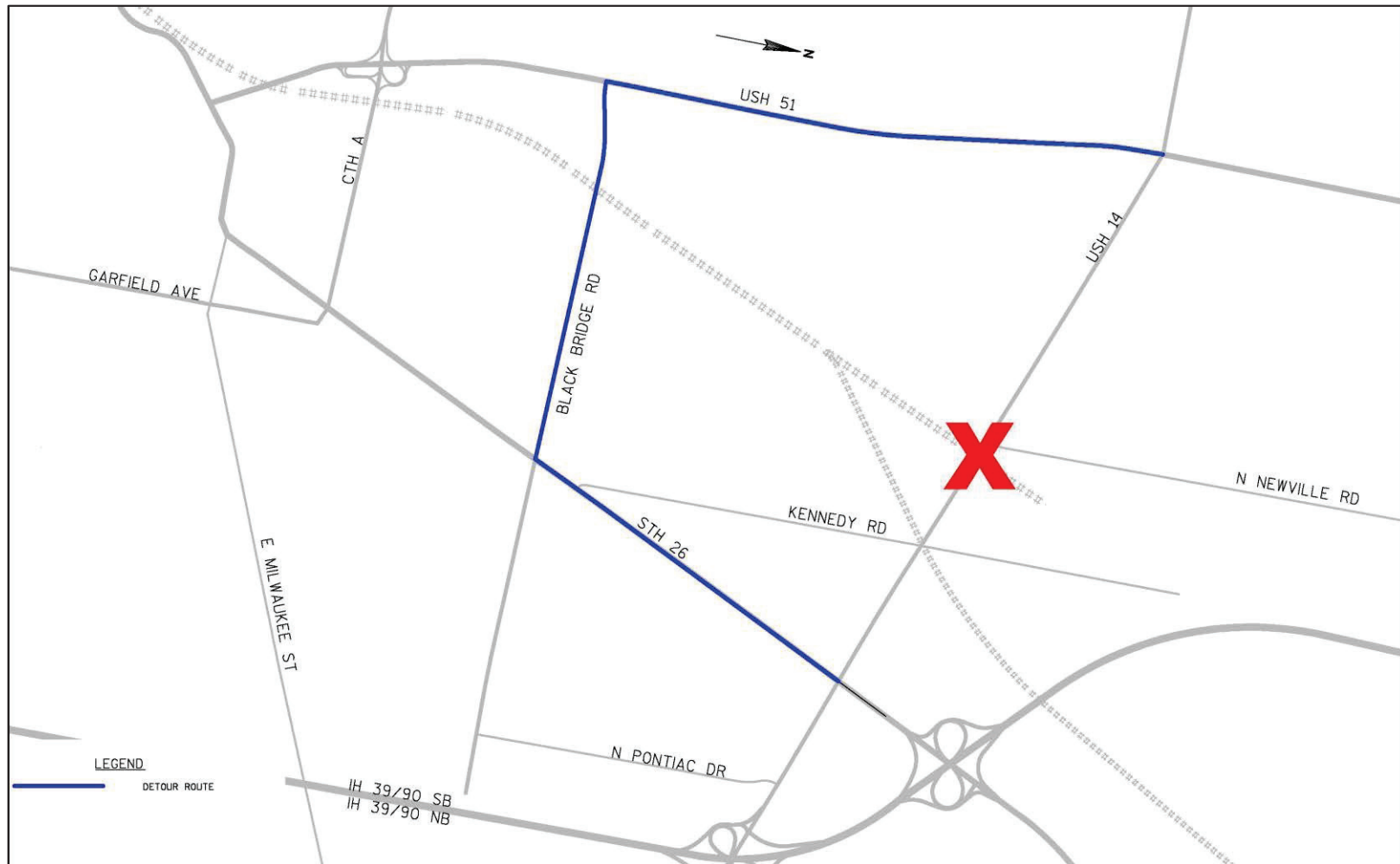
I-39/90 Alternate Route Improvements

- US 14 – Pontiac Drive Intersection Construction



I-39/90 Alternate Route Improvements

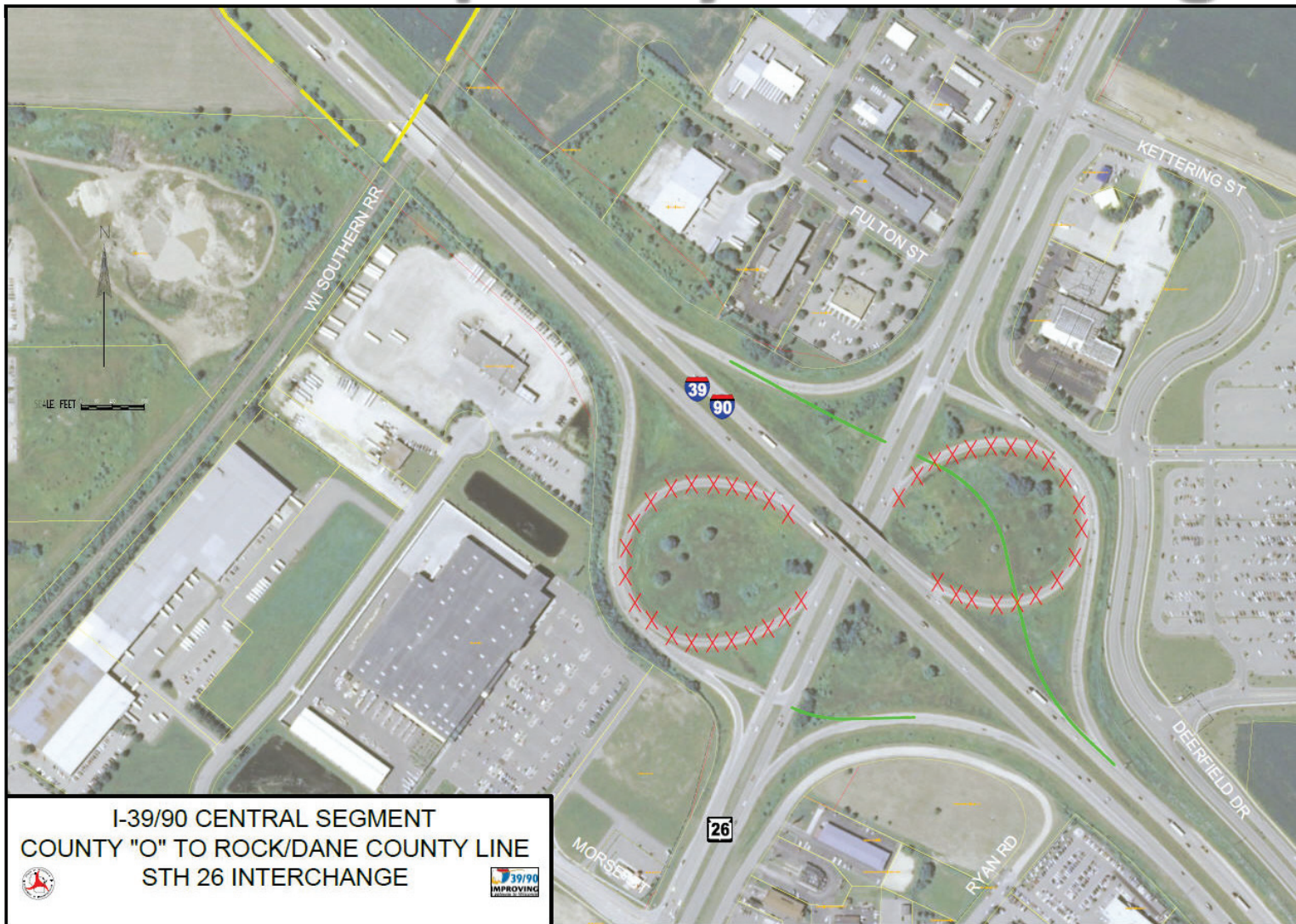
- US 14 – Newville Road Railroad Track Construction Detour



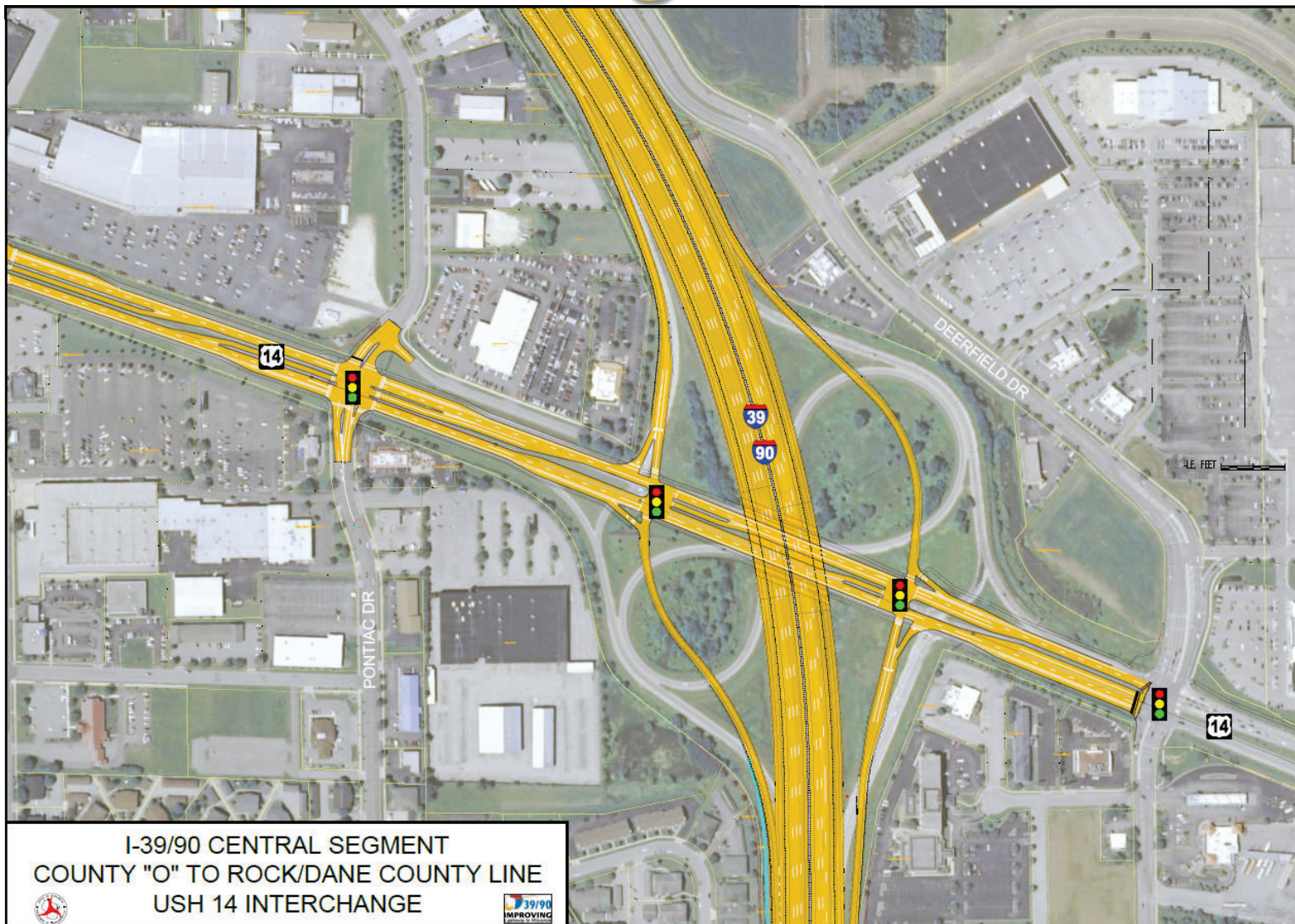
US 14 Temporary Interchange



WIS 26 Temporary Interchange

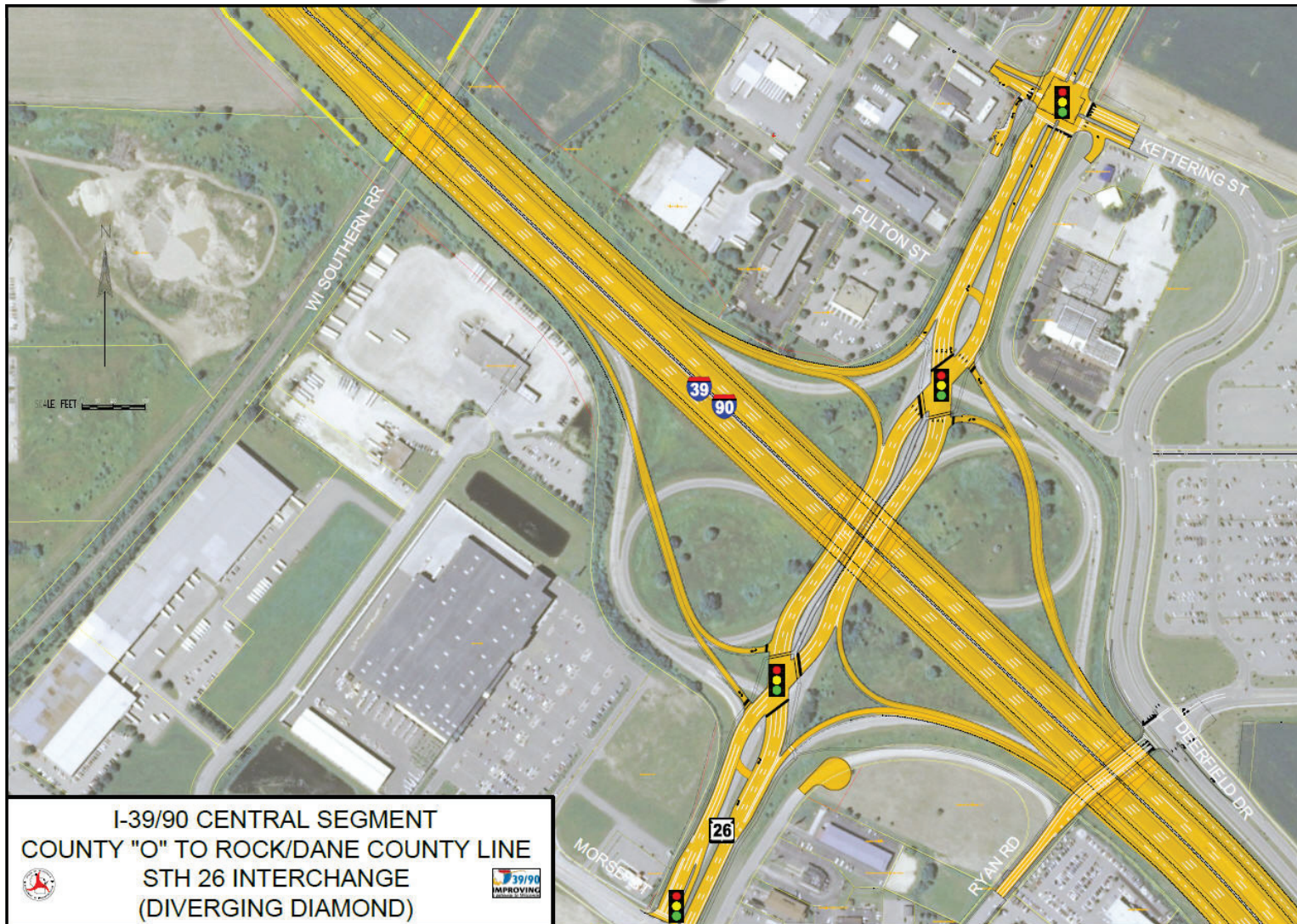


US 14 Interchange



**US 14
Diamond
with
Traffic
Signals**

WIS 26 Interchange



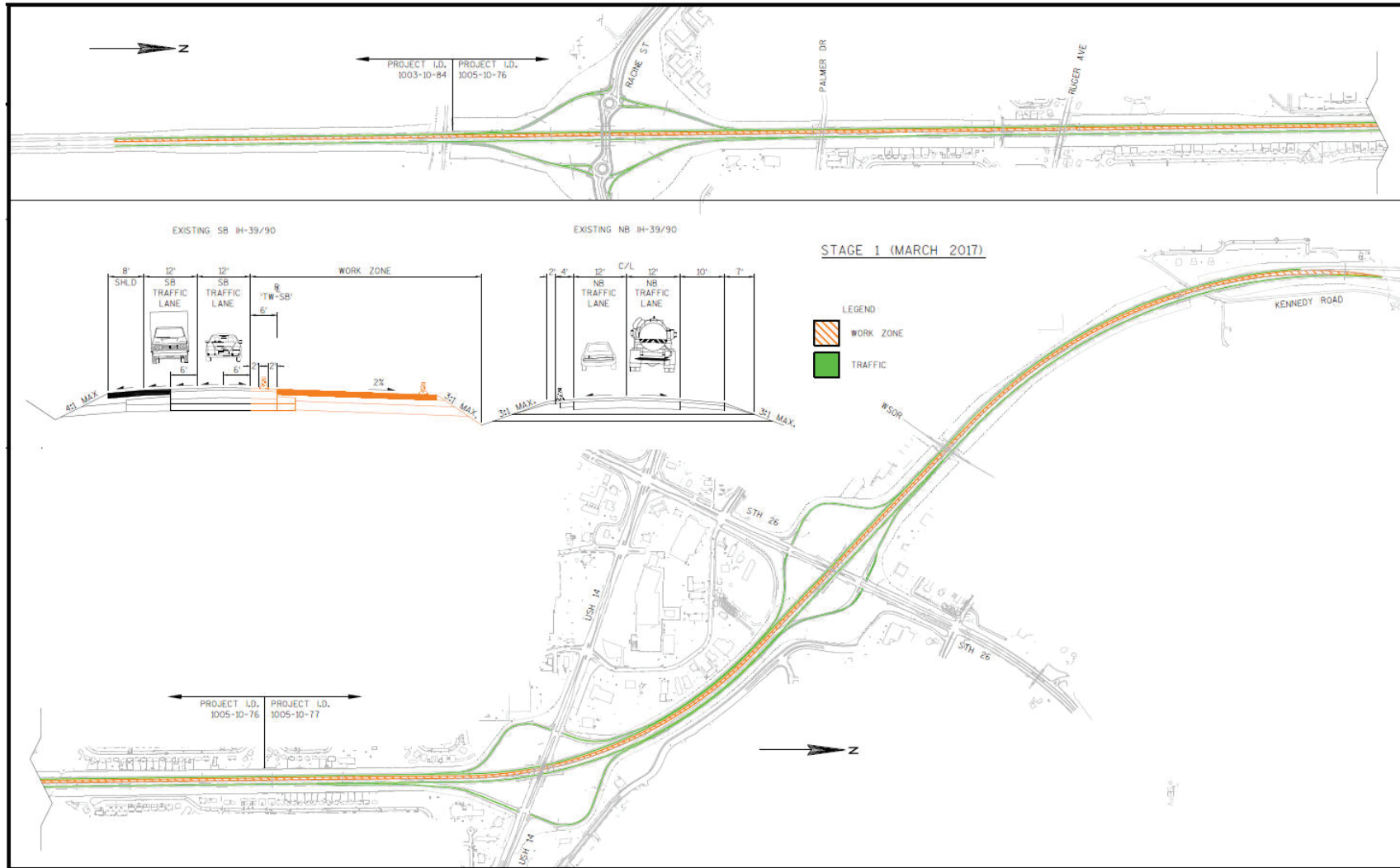
**WIS 26
Diverging
Diamond
(DDI)
with
Traffic
Signals**

Collector-Distributor System

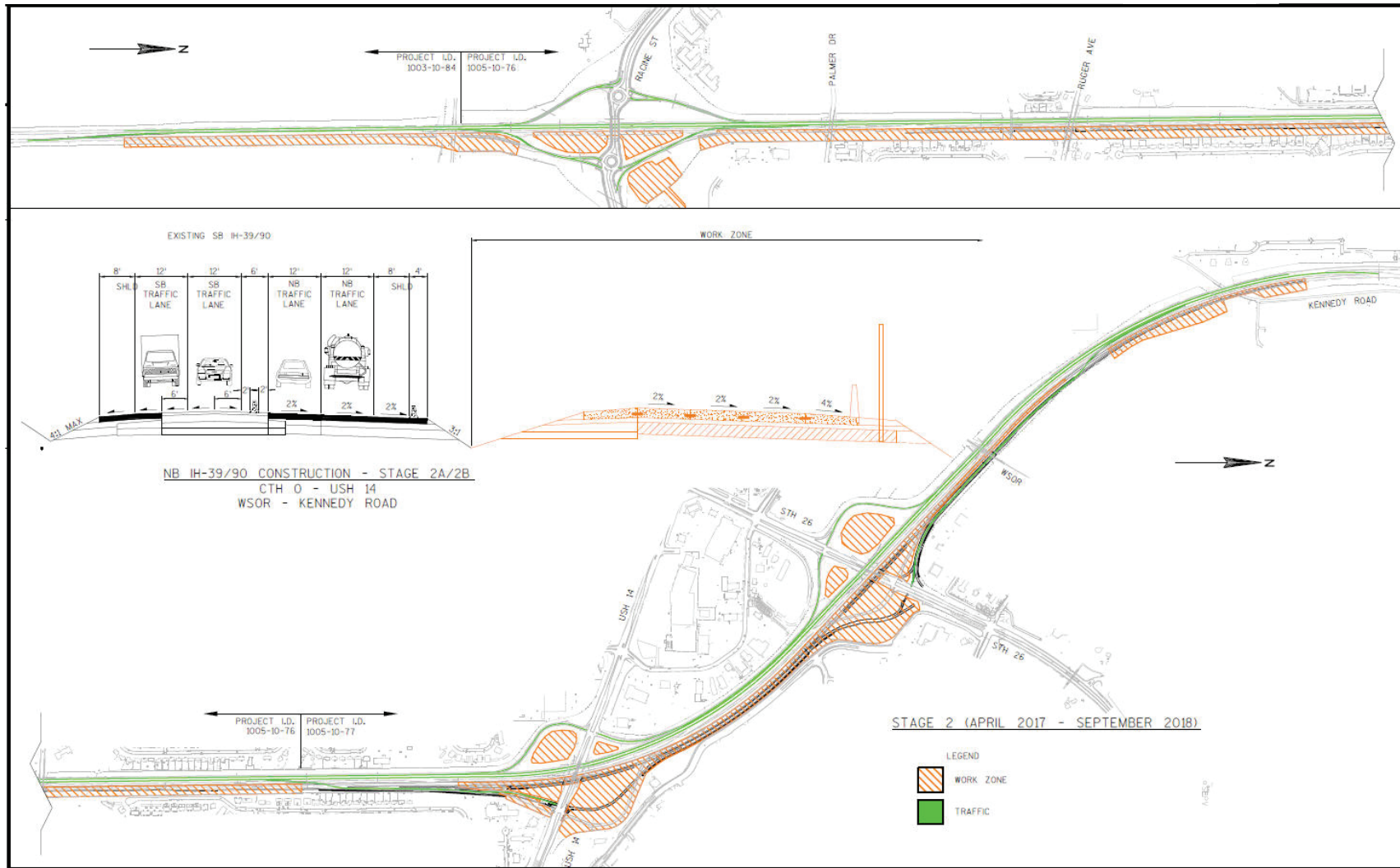
- JANESVILLE EXIT RAMP DECISION POINTS



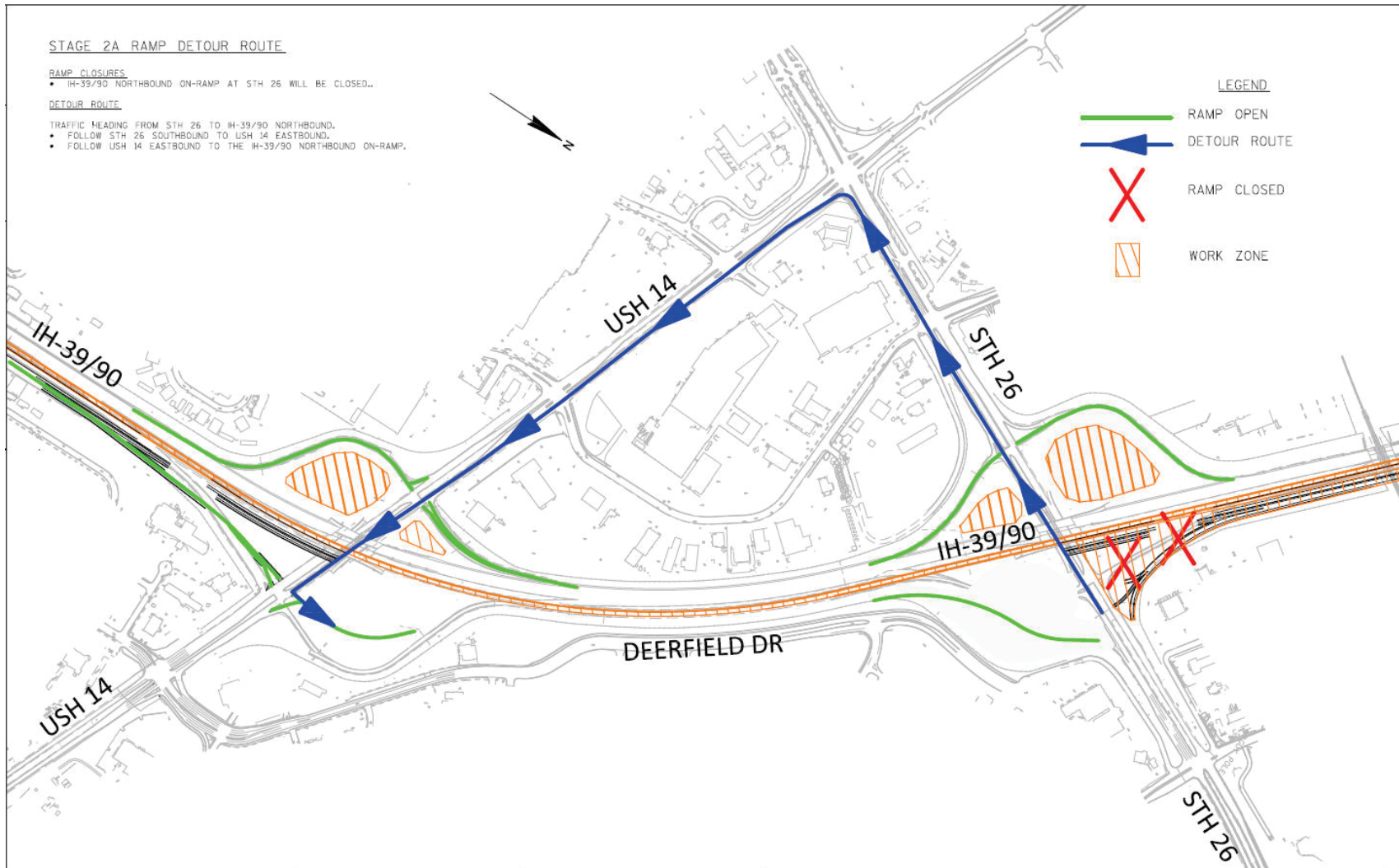
Construction Staging 2016 (Mar. – Aug.)



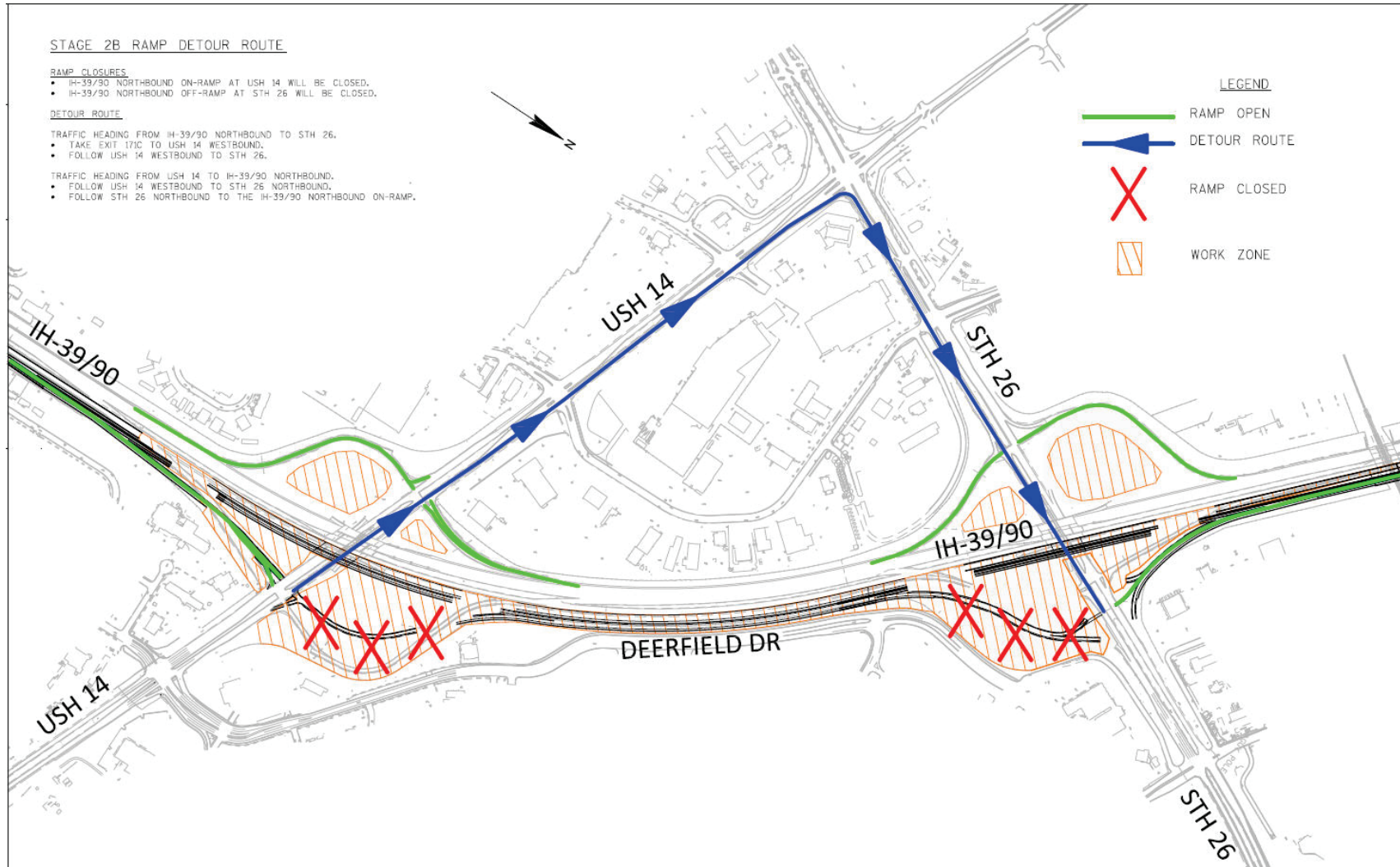
Construction Staging 2017-2018



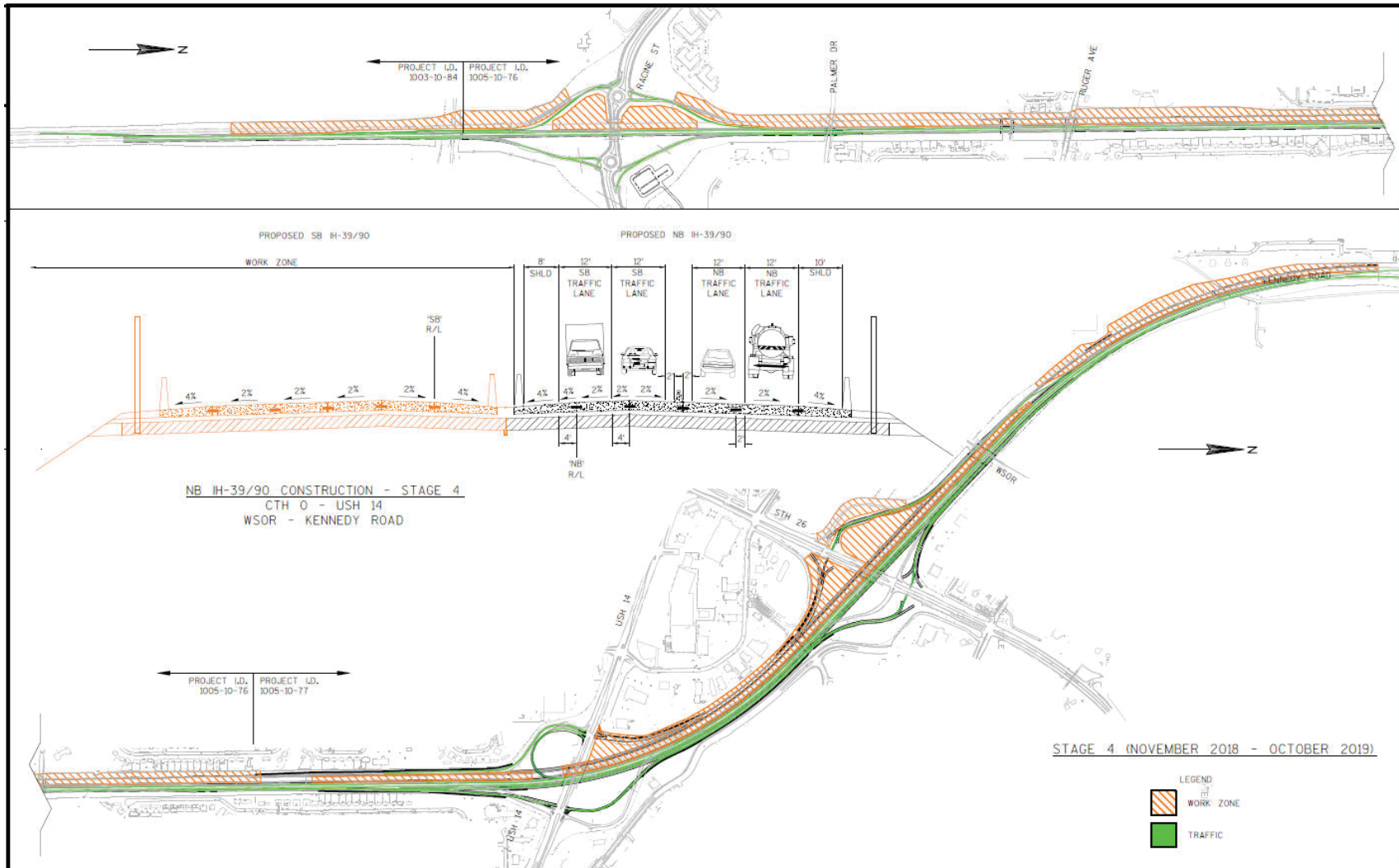
WIS 26 Ramp Closure Detour 2017



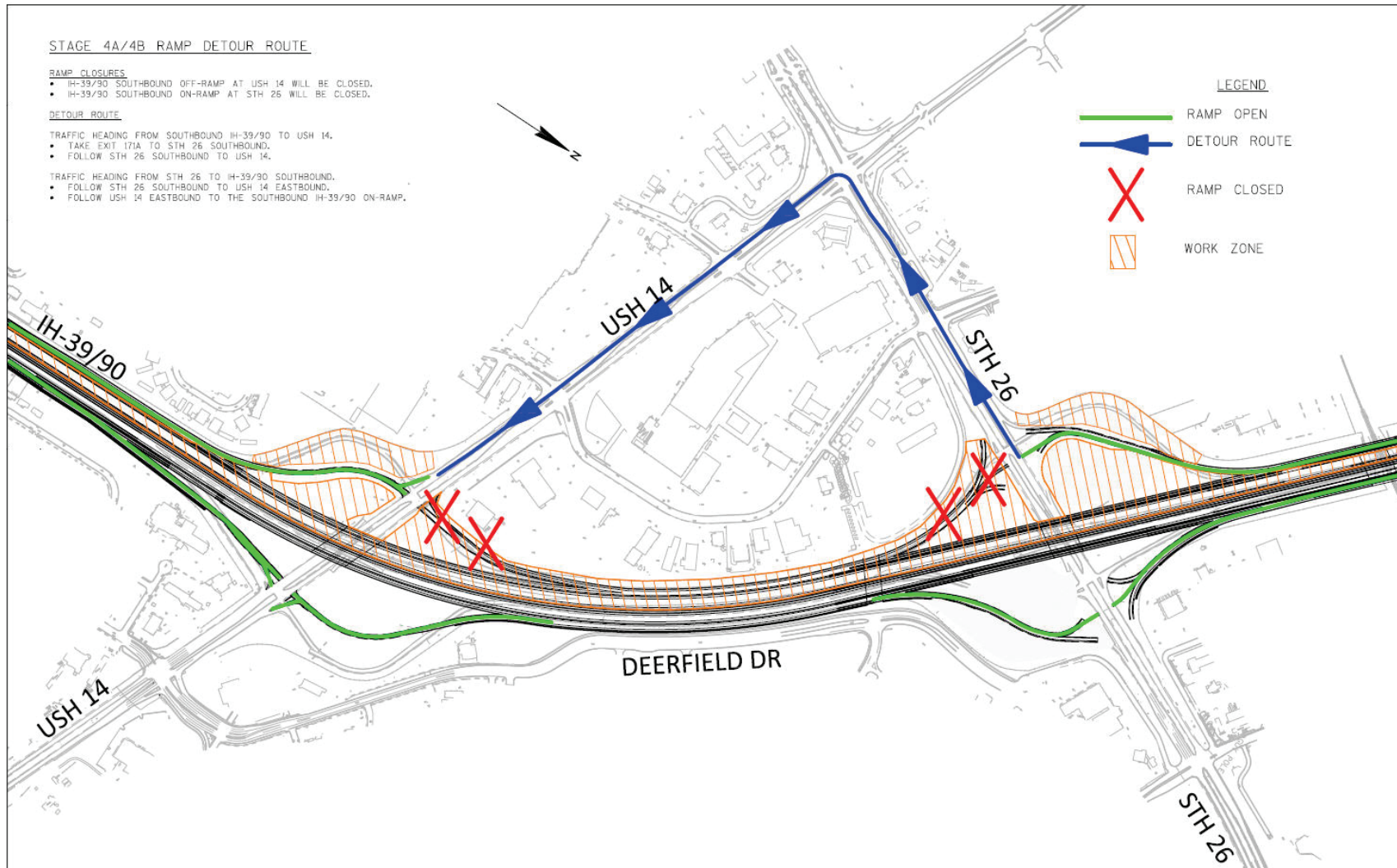
US 14 – WIS 26 Ramp Closure Detour 2018



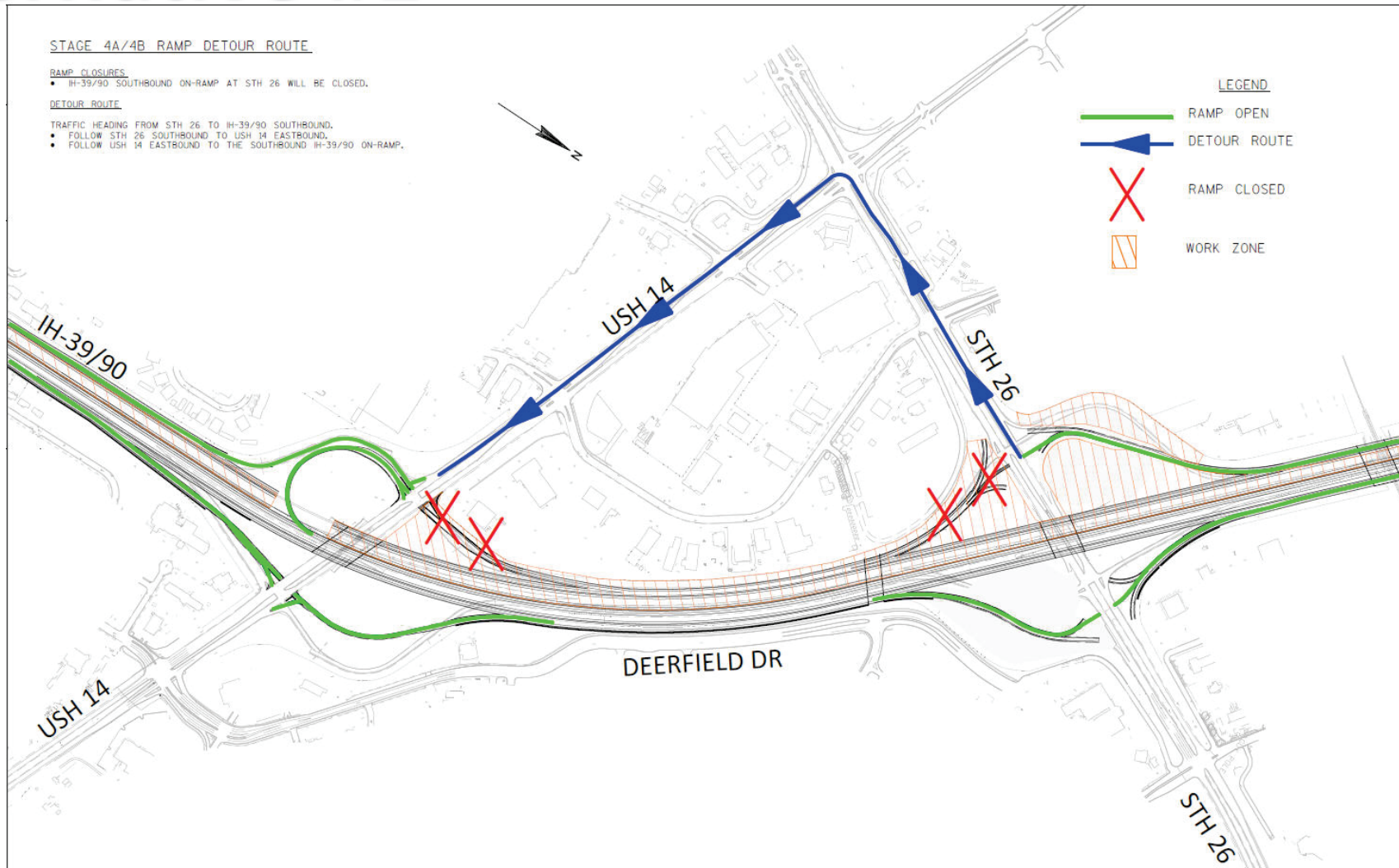
Construction Staging 2018-2019



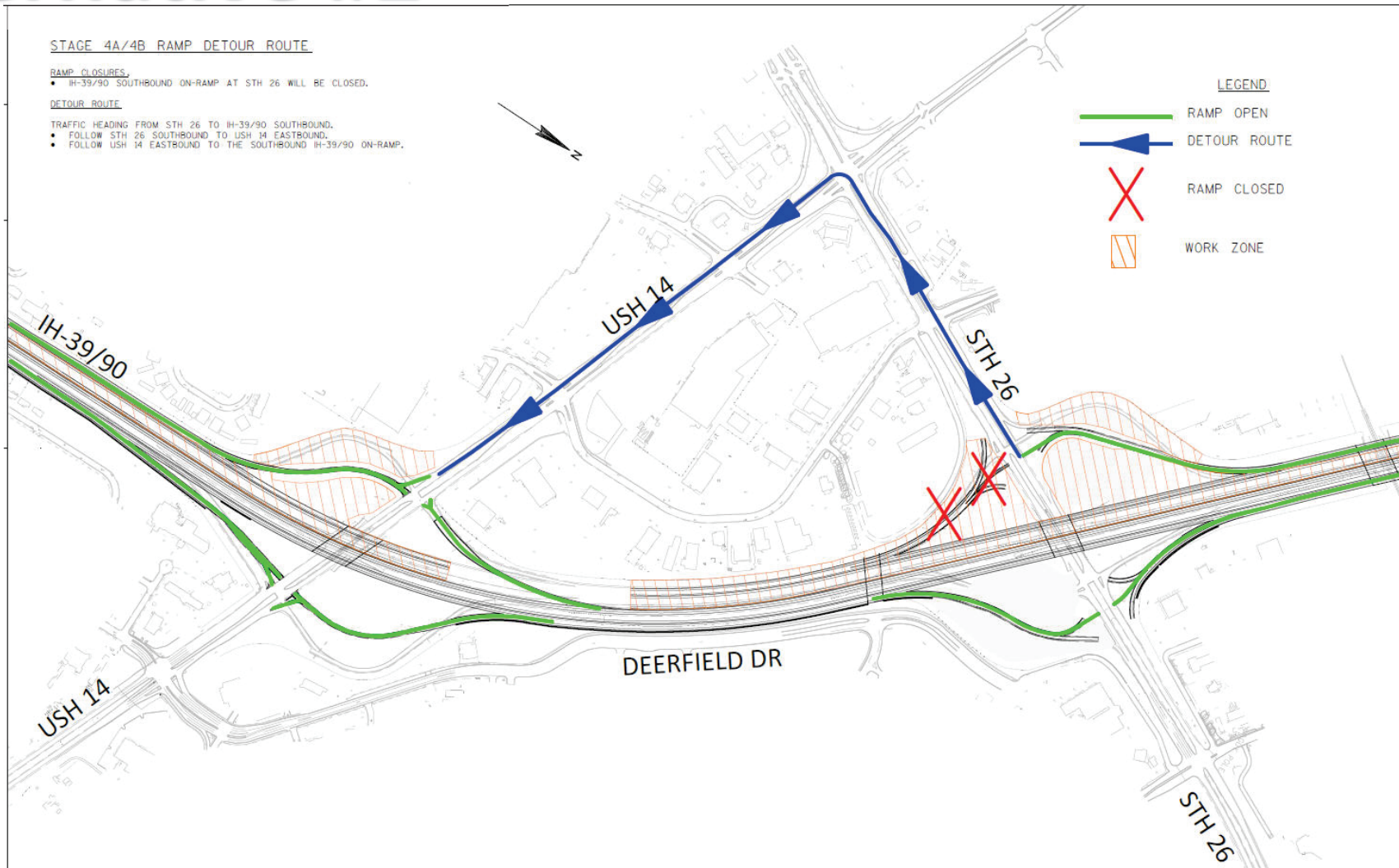
Ramp Closure Detour



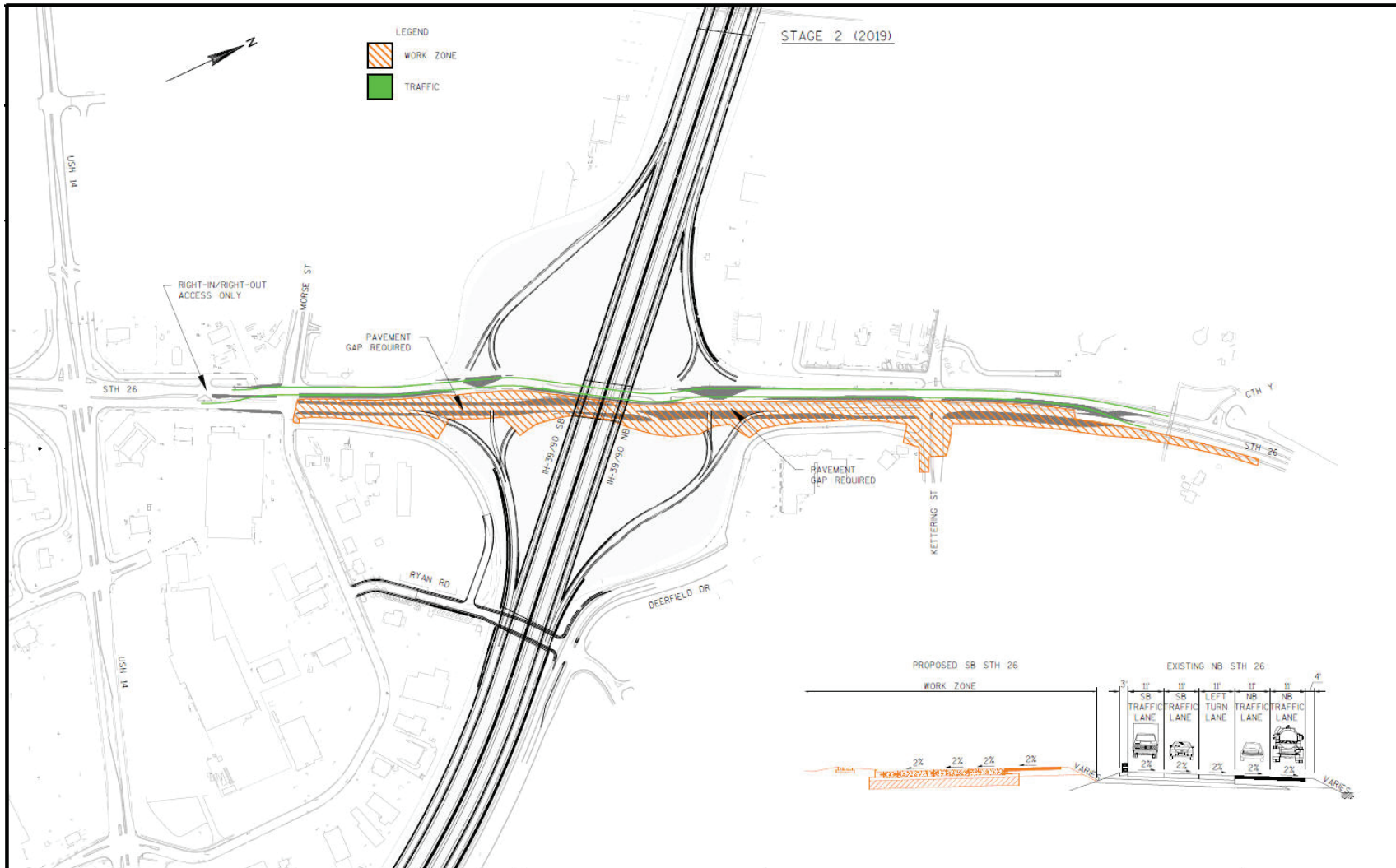
Ramp Closure Detour Alternative #1



Ramp Closure Detour Alternative #2



Construction Staging 2019 (WIS 26)



Construction Staging 2020 (US 14)






In This Together program

WisDOT recognizes businesses located in or near construction zones are faced with special challenges.

It's critical that customers, employees and delivery vehicles have access to businesses and places of work, regardless of any roadwork inconvenience.




I-39/90 Project website



WISCONSIN DEPARTMENT OF TRANSPORTATION

Travel Information

Home | Contact Us | Help | Site Index | Wisconsin 511 | My 511wi | Wisconsin DOT



I-39/90 Expansion Project Overview Schedule Map Travel Times Closures News Resources Sign Up for Updates

▼ General Info

- Project Team Contacts
- Project Comments
- Related Info
- Overview Video
- Frequently Asked Questions (FAQ)

▼ Public Involvement

- Rock County Stakeholder Advisory Committee
- Project Brochures
- Newsletters

▼ Business Info

In This Together Program

▼ Diverging Diamond Interchange (DDI)

- DDI Overview
- WIS 11 (Avalon Road) Interchange
- WIS 26 Interchange

▼ Roundabout Outreach

- Roundabout Overview
- WIS 11 (Racine St.) Interchange, Janesville

▼ Environmental

- Environmental Documents
- Noise Barriers

In This Together program

The "[In This Together](#)" program is sponsored by the Wisconsin Department of Transportation (WisDOT) and targets businesses facing road construction in their community. The program's goal is to help businesses maintain daily operations while construction is underway.


WisDOT recognizes that businesses located in or near construction zones have special needs. It is critical that customers, employees and delivery vehicles have access to businesses and places of work, regardless of any roadwork inconvenience.

This program supports economic development in a number of ways:

- Encourages businesses to become proactive in attracting business during construction and working together with WisDOT;
- Provides owners with positive strategies and successful techniques to draw in customers;
- Reduces the fears and frustrations of business owners associated with construction disruptions, delays and detours; and
- Demonstrates that WisDOT wants to help businesses succeed and promote economic development.

Download the [I-39/90 Project, "In This Together" workbook](#) for other tips and tools.

Contact the [I-39/90 Project Team](#) with any questions regarding your business.



Business info at www.i39-90.wi.gov
under the Resources tab



Business promotion on WisDOT website



▼ General Info

[Project Team Contacts](#)
[Project Comments](#)
[Related Info](#)
[Frequently Asked Questions \(FAQ\)](#)
[Purpose](#)

▼ Business Info

[In This Together Program](#)
[Businesses In The Work Zone](#)

▼ Public Involvement

[Dane County Stakeholders Advisory Committee](#)
[Brochures And Newsletters](#)
[Public Involvement Meeting \(PIM\)](#)
[Materials](#)

▼ Video

[Overview](#)
[Stage 1](#)
[Stage 1 Drive-Through Simulation](#)
[Time-Lapse Of Bridge Beam Delivery](#)
[Stage 2](#)
[Stage 2 Drive-Through Simulation](#)

▼ Environmental

[Project Documents](#)

Businesses in the work zone

Promote your business during construction

Is your business located within the current Verona Road work zone? If so, help your business not only survive, but thrive, during construction. Promote your business by uploading your business information to our website. (Please allow 1-3 business days for information to be added.)

- [Submit your business information.](#)
- Download the ["In This Together" workbook](#) for tips and tools to help your business during construction.

Businesses located in the Verona Road construction area

Regardless of any roadwork inconvenience, please continue to patronize area businesses in the Verona Road work zone.

NOTE: All external hyperlinks are provided for your information and for the benefit of the general public. The Wisconsin Department of Transportation does not testify to, sponsor or endorse the accuracy of the information provided on externally linked pages.

Arthur Murray Dance Studio



The World leader in Ballroom, Latin and Social Dance. Private and Group Classes.

5117 Verona Road
Fitchburg, WI 53711
(608) 278-1411
www.arthurmurraymadison.com

Chalet Ski and Patio

Specialty retailer offering porch, patio, upholstery and leather furniture in addition to our seasonal downhill, cross country and snowshoe equipment and clothing.

5252 Verona Road
Madison, WI 53711
(608) 273-8263
www.chaletski.com

Dorn True Value Hardware



Retail Hardware Store with Paint, Hardware, Plumbing, Tools and Sporting Goods as Signature departments. Great selections of Lawn and Garden, Electrical, and Housewares.

1348 S. Midvale Blvd.
Madison, WI 53711
(608) 274-2511
www.DornHardware.com





Be proactive

Businesses can take basic actions to not only survive, but thrive, during road construction.



Feiler's Restaurant in Madison, WI



Stay informed

- Meet the on-site project manager – keep his/her telephone number in a handy place.
- Attend public meetings to increase your knowledge of the project.
- **Sign up for project email updates.** Also provide names and emails for others within your organization!



Stay involved

- For any special concerns, coordinate and hold a pre-construction meeting with WisDOT and the contractor.
 - Find out the construction staging, etc.
 - Learn what to expect (i.e., dirt, mud, ground shaking, etc.)
- Participate in project update meetings.



Tips

- Get involved early. Advanced planning and organization pays off.
- Form an alliance with other businesses in your area.
 - Pool resources to purchase group advertising.
- Hold regular, frequent meetings with other businesses to share strategies and support.



Recipe for success

- Partner with neighboring businesses, your local chamber and community leadership.
- Keep your customers informed – update website and social media sites often.
- Provide superior service.
- Stay positive! Customers do notice.

Promotion examples: Partnering and Advertising





Promotion examples: Street Signage





Promotion examples: Handouts

PAVING OUR WAY... INTO THE FUTURE

ROAD WORK AHEAD

Project Details

The project contains three segments: a northern segment between WIS 64 and a northern segment between WIS 64 to just north of Ann's Way, a southern segment, which begins just north of County O segment, extending to Perkins St., and a middle segment between Perkins Street and WIS 64.

The northern and southern segments include new concrete curb and gutter, pavement replacement, new storm, sanitary sewer and water lines. The northern segment will be expanded to a five lane roadway with the middle lane roadway with the middle southern segment will remain a three lane roadway with the middle lane used for left turns. In the middle segment, city utilities will be installed and repaired. Roundabouts will replace traffic signals at Alhman Street and Ann's Way.

New sidewalks will be installed on both sides of WIS 15 from WIS 64 to Ann's Way and new street lighting will be located on both sides of WIS 13 throughout the northern segment.

The first segment detour will be Cty. O, Cty. Q and Hwy 64 with access to local businesses down Wholen Ave.
Target date to complete 1st segment is July 4th, 2011.

For tourism information:
1-888-682-9567 or www.medfordwis.com

PAVING OUR WAY... INTO THE FUTURE



North Tower Avenue remains OPEN for business!

The long-awaited reconstruction of North Tower Avenue is scheduled to take place from April through October 2013, requiring some temporary changes in traffic patterns. But, worry temporary. What won't change is the area of the business activity in North Tower Avenue in Downtown Superior.

To complete this major project as quickly as possible, construction will take place from 6 a.m. to 10 p.m., seven days a week.

To learn more, we invite you to head on. And visit the Superior Business Improvement District's website (www.superiorbid.com) for frequent updates.

Stay Informed With Construction Updates

The BID is working closely with several organizations to keep you well informed, including the Wisconsin Department of Transportation (www.dot.wisconsin.gov/projects/superiorrebuild), the Superior Chamber (www.superiorchamber.org), the City of Superior Association (www.superiorwi.org), the Development Association (www.developmentassociation.com) and others.

We will be posting information on our website and also sending updates to anyone wishing to receive them. Please email the BID (superiorbid@superiorbid.com) to request entry including in the media as desired.

Many businesses in the construction area will provide their own updates through Facebook, Twitter and other means.

We dig Downtown SUPERIOR

Details About the 2013 North Tower Avenue Reconstruction Project

Belknap Street to North Third Street
Plus, a detour and parking map!

SUPERIOR
City of Superior

THE CHAMBER
Downtown Superior

Development Association
The Superior Development Association

Superior Business Improvement District

1801 Tower Avenue • Suite 302 • Superior, WI 54880
Phone: 715-385-3637 • Fax: 715-385-6101
www.superiorbid.com

How to stay informed and involved!



WISCONSIN DEPARTMENT OF TRANSPORTATION
Travel Information 

[Home](#) | [Contact Us](#) | [Help](#) | [Site Index](#) | [Wisconsin 511](#) | [My 511wi](#) | [Wisconsin DOT](#)

I-39/90 Expansion Project

[Overview](#)
[Schedule](#)
[Map](#)
[Travel Times](#)
[Closures](#)
[News](#)
[Resources](#)
[Sign Up for Updates](#)

Overview

About

Purpose


Project segments

North segment

Central segment

South segment

County G and County BT project info

 **Weekly Construction Update** – sign up for [project email updates](#).

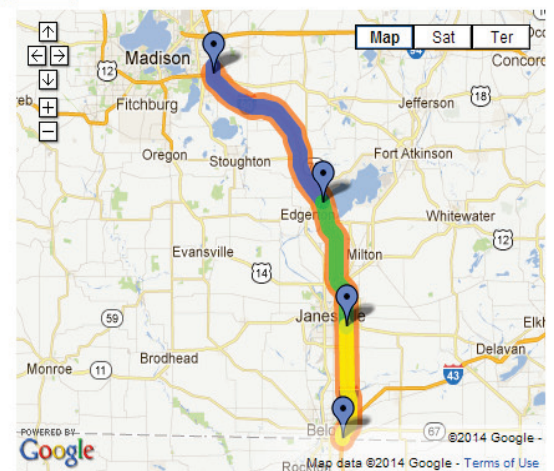
The Wisconsin Department of Transportation (WisDOT) is overseeing a major reconstruction and expansion project in south-central Wisconsin. The I-39/90 Expansion Project extends approximately 45 miles along Interstate 39/90 from the Illinois state line to the US 12/18 interchange near Madison.

- Built in the early 1960s, all of the 11 interchanges along the corridor have outdated design features that contribute to safety concerns.
- By the year 2030, with no corrective action, all sections of I-39/90 are expected to operate at unacceptable levels of service, meaning unstable traffic flow and stop-and-go conditions.
- In order to address those safety and congestion concerns, WisDOT will:
 - Reconstruct and expand I-39/90 from four to six lanes and reconfigure 11 interchanges.
 - Expand the Interstate to eight lanes (four lanes in each direction), from WIS 11 (Avalon Rd.) north to the WIS 26 interchange, to accommodate projected traffic increases.
- Construction on I-39/90 is scheduled to begin in 2015 and be completed in 2021.

Stay informed and involved using this site and visiting our [Facebook page](#). 

Thank you for your patience as we "improve a gateway to Wisconsin."

 628 people like this. Sign Up to see what your friends like.



Key

-  Project location
-  Project limit
-  North segment
-  Central segment
-  South segment

© Copyright 2008-2011 Wisconsin Department of Transportation. All Rights Reserved.

[Home](#) | [Contact Us](#) | [Feedback](#) | [Help](#) | [Site Index](#) | [Wisconsin 511](#) | [My 511wi](#) | [Wisconsin DOT](#) | [Disclaimer](#) | [Privacy Policy](#)

Sign up for project email updates: www.i39-90.wi.gov

Questions?

www.i39-90.wi.gov

i39-90Project@dot.wi.gov

Facebook.com/WisconsinI3990Project

(608) 884-1234