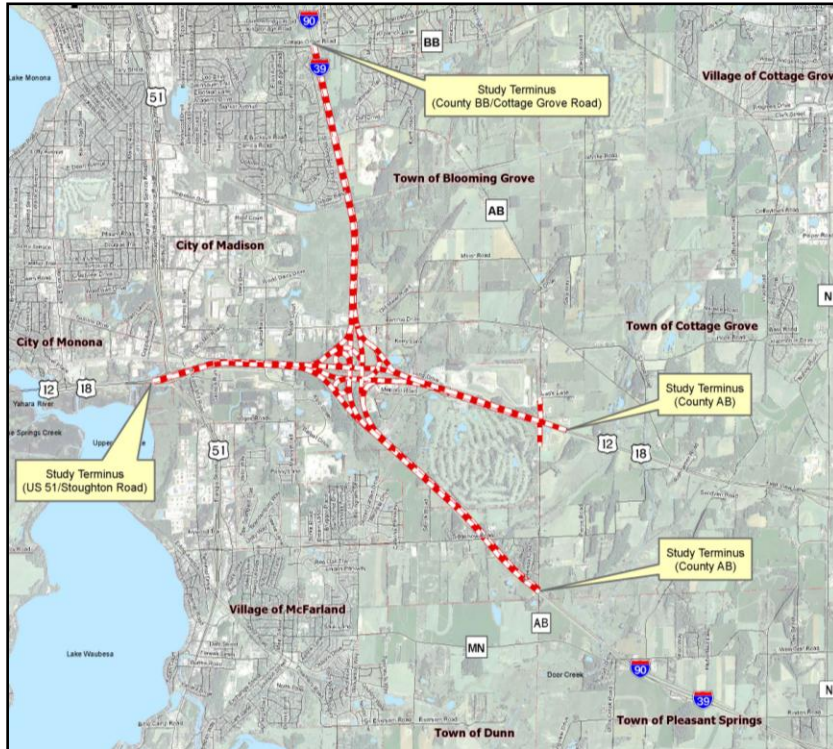


# I-39/90 & US 12/18 Interchange (Beltline Interchange) Fact Sheet



## Project limits and length

- 4.2 miles on I-39/90
- 4.1 miles on US 12/18
- North: County BB (Cottage Grove Road)
- South: County AB
- East: County AB (future interchange)
- West: US 51 (Stoughton Road)

## Project scope

- Existing interchange will be completely reconstructed and reconfigured
- Addition of a third lane in each direction on I-39/90 to create a 6-lane Interstate
- Construction of new interchange at US 12/18 & County AB
- Removal of direct access on US 12/18 west to new County AB and US 12/18 interchange

## Project background and environmental documentation

- Beltline Interchange is part of the I-39/90 expansion project from the Illinois state line to the Beltline Interchange in Madison.
- Beltline Interchange reconstruction was included in the 2010 Environmental Assessment (EA) for the I-39/90 project but, due to new design standards and design updates, a separate EA will now be completed for the interchange.
- New EA will discuss the recommended interchange design and document potential physical, social and environmental effects related to its reconstruction.

## Project purpose

- Improvements needed to address safety, congestion, and deteriorating and outdated infrastructure.
- Traffic volumes south of the interchange are projected to increase from 49,100 to 70,300 vehicles per day and north of the interchange from 76,000 to 122,600 vehicles per day by 2040.
- The left hand exit from I-39/90 northbound to US 12/18 westbound poses safety challenges since drivers are more familiar with exits from the right lane. This also requires drivers to slow down to exit while in the left lane, which generally has vehicles going at a faster speed than the right lane.
- The I-39/90 southbound exit to US 12/18 westbound poses safety challenges since the outermost travel lane becomes an exit only lane.
- The US 12/18 intersection with Millpond Road has a higher than average crash rate including two fatalities between 2007 and 2012. The section of US 12/18 between I-39/90 and County AB also has a



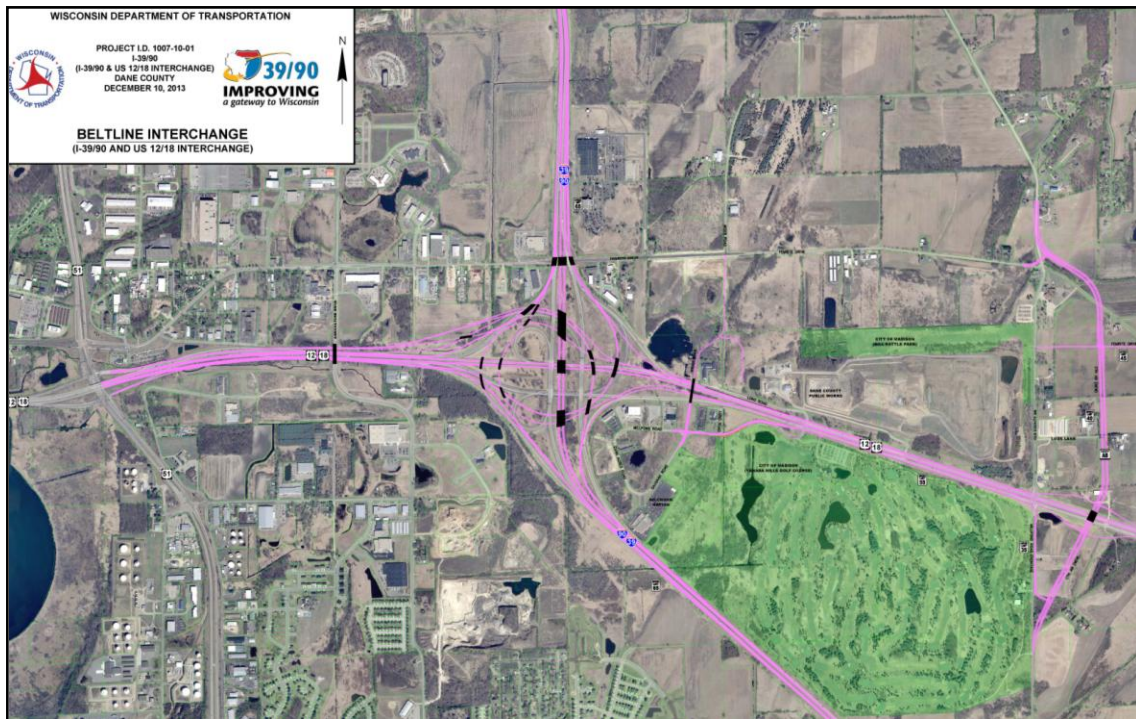
Email us at  
[I39-90Project@dot.wi.gov](mailto:I39-90Project@dot.wi.gov)



Visit us online at  
[www.i39-90.wi.gov](http://www.i39-90.wi.gov)



Find us on Facebook at  
[www.facebook.com/WisconsinI3990Project](http://www.facebook.com/WisconsinI3990Project)



### Recommended interchange design

- I-39/90 will be expanded from four lanes to six lanes through the interchange.
- A collector-distributor road (C-D road) will be constructed to US 51 (Stoughton Road). A C-D road is a one-way road next to a freeway that is used to collect and separate traffic with the same destination to eliminate weaving to/from the main lanes of the freeway.
- All Interstate exit ramps will be right hand exits.
- To the maximum extent possible, the reconstructed interchange will utilize the existing interchange footprint, reducing the amount of new right of way needed.

### US 12/18 & County AB improvements

- US 12/18 will be shifted to the north and all direct access will be removed between I-39/90 and County AB.
- A new frontage road will be constructed along the south side of US 12/18 to connect Millpond Road to County AB.
- County AB will become a full interchange with on/off ramps and will go over US 12/18.
- County AB will be re-aligned to the east to provide more distance from the Beltline Interchange.
- Additional right of way will be required for the new County AB & US 12/18 Interchange and County AB improvements.

### Tentative construction schedule

- 2015 - Construction on some segments of I-39/90 south of the Beltline Interchange begins and will occur over several years.
- 2018 - Potential Beltline Interchange interim improvements (the addition of third lane in each direction of I-39/90 through the Beltline Interchange) if funding for the full interchange reconstruction is delayed.
- 2020 or later – Full reconstruction of the Beltline Interchange (dependent on funding).

## Project Contacts

Craig Pringle  
I-39/90 North Project Manager  
(608) 884-7132  
[craig.pringle@dot.wi.gov](mailto:craig.pringle@dot.wi.gov)

Darren Fortney  
Public Involvement Representative  
(608) 620-6191  
[dfortney@sehinc.com](mailto:dfortney@sehinc.com)